

REVISIONS			
REV	DESCRIPTION	DATE	APPROVED

NOTES:

1. THE PRODUCT SHOWN HEREIN IS DESIGNED AND MANUFACTURED TO COMPLY WITH REQUIREMENTS OF THE 2018 IBC AND 2018 IRC.
2. WOOD FRAMING AND MASONRY OPENING TO BE DESIGNED AND ANCHORED TO PROPERLY TRANSFER ALL LOADS TO STRUCTURE. FRAMING AND MASONRY OPENING IS THE RESPONSIBILITY OF THE ARCHITECT OR ENGINEER OF RECORD.
3. 1X BUCK OVER MASONRY/CONCRETE IS OPTIONAL.
4. WHERE SHIM OR BUCK THICKNESS IS LESS THAN 1-1/2" UNITS MUST BE ANCHORED THROUGH THE FRAME IN ACCORDANCE WITH MANUFACTURER'S PUBLISHED INSTALLATION INSTRUCTIONS. ANCHORS SHALL BE SECURELY FASTENED DIRECTLY INTO MASONRY, CONCRETE OR OTHER STRUCTURAL SUBSTRATE MATERIAL.
5. WHERE WOOD BUCK THICKNESS IS 1-1/2" OR GREATER, BUCK SHALL BE SECURELY FASTENED TO MASONRY, CONCRETE OR OTHER STRUCTURAL SUBSTRATE. UNITS MAY BE ANCHORED THROUGH FRAME TO SECURED WOOD BUCK IN ACCORDANCE WITH MANUFACTURER'S PUBLISHED INSTALLATION INSTRUCTIONS.
6. WHERE 1X BUCK IS NOT USED DISSIMILAR MATERIALS MUST BE SEPARATED WITH APPROVED COATING OR MEMBRANE. SELECTION OF COATING OR MEMBRANE IS THE RESPONSIBILITY OF THE ARCHITECT OR ENGINEER OF RECORD.
7. BUCKS SHALL EXTEND BEYOND UNIT FRAME INTERIOR FACE SO THAT FULL FRAME SUPPORT IS PROVIDED.
8. FOR FIN INSTALLATION SHIM AS NEEDED. FOR FRAME INSTALLATION SHIM AS REQUIRED AT EACH ANCHOR LOCATION WITH LOAD BEARING SHIM. SHIM WHERE SPACE OF 1/16" OR GREATER OCCURS. MAXIMUM ALLOWABLE SHIM STACK TO BE 1/4".
9. SHIMS SHALL BE LOCATED, APPLIED AND MADE FROM MATERIALS AND THICKNESS CAPABLE OF SUSTAINING APPLICABLE LOADS.
10. WIND LOAD DURATION FACTOR Cd=1.6 WAS USED FOR WOOD ANCHOR CALCULATIONS.
11. FRAME MATERIAL: EXTRUDED RIGID PVC.
12. UNITS MUST BE GLAZED PER ASTM E1300
13. APPROVED IMPACT PROTECTIVE SYSTEM IS REQUIRED FOR THIS PRODUCT IN WIND BORNE DEBRIS REGIONS.
14. FOR ANCHORING THROUGH FIN INTO WOOD FRAMING OR 2X BUCK USE #8 WOOD SCREWS WITH SUFFICIENT LENGTH TO ACHIEVE A 1 1/4" MINIMUM EMBEDMENT INTO SUBSTRATE. LOCATE ANCHORS AS SHOWN IN ELEVATIONS AND INSTALLATION DETAILS.

15. FOR ANCHORING THROUGH FRAME INTO WOOD FRAMING OR 2X BUCK USE #8 WOOD SCREWS WITH SUFFICIENT LENGTH TO ACHIEVE A 1 1/4" MINIMUM EMBEDMENT INTO SUBSTRATE. LOCATE ANCHORS AS SHOWN IN ELEVATIONS AND INSTALLATION DETAILS.
16. FOR ANCHORING THROUGH FRAME INTO MASONRY/CONCRETE USE 3/16" TAPCONS WITH SUFFICIENT LENGTH TO ACHIEVE A 1 1/4" MINIMUM EMBEDMENT INTO SUBSTRATE WITH 2" MINIMUM EDGE DISTANCE. LOCATE ANCHORS AS SHOWN IN ELEVATIONS AND INSTALLATION DETAILS.
17. FOR ANCHORING THROUGH FRAME INTO METAL STRUCTURE USE #8 SMS OR SELF DRILLING SCREWS WITH SUFFICIENT LENGTH TO ACHIEVE 3 THREADS MINIMUM BEYOND STRUCTURE INTERIOR WALL. LOCATE ANCHORS AS SHOWN IN ELEVATIONS AND INSTALLATION DETAILS.
18. ALL FASTENERS TO BE CORROSION RESISTANT.
19. INSTALLATION ANCHORS SHALL BE INSTALLED IN ACCORDANCE WITH ANCHOR MANUFACTURER'S INSTALLATION INSTRUCTIONS AND ANCHORS SHALL NOT BE USED IN SUBSTRATES WITH STRENGTHS LESS THAN THE MINIMUM STRENGTH SPECIFIED BELOW:
 - A. WOOD: MINIMUM SPECIFIC GRAVITY OF G=0.42
 - B. CONCRETE: MINIMUM COMPRESSIVE STRENGTH OF 2,000 PSI.
 - C. MASONRY: HOLLOW/FILLED BLOCK PER ASTM C90 WITH Fm=2,000PSI MINIMUM.
 - D. METAL STRUCTURE: STEEL 18GA (.048") FY=33KSI/FU=52KSI OR ALUMINUM 6063-T5 FU=30KSI .125" THICK MINIMUM

SIGNED: 09/29/2020

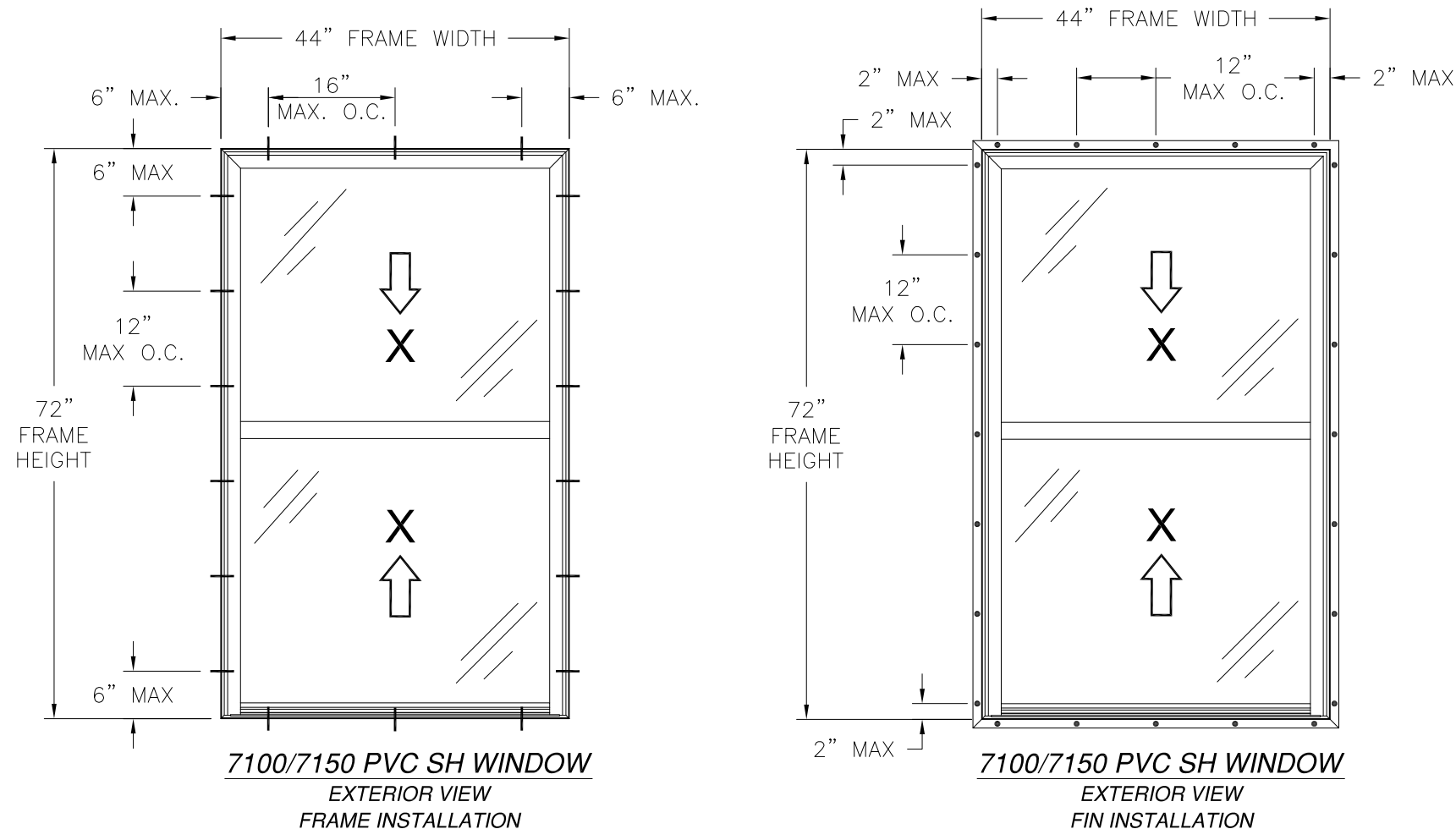
TABLE OF CONTENTS	
SHEET NO.	DESCRIPTION
1	NOTES
2	ELEVATIONS
3 - 5	INSTALLATION DETAILS
6	COMPONENTS

WINDOW MART, INC. 5760 ALBERT PIKE ROYAL, AR 71968		
7100/7150 PVC SINGLE HUNG WINDOW REINFORCED 44" X 72" NON-IMPACT NOTES		
DRAWN: A.R.	DWG NO. 08-03617	REV -
SCALE NTS	DATE 09/22/2020	SHEET 1 OF 6
L. ROBERTO LOMAS P.E. 1432 WOODFORD RD LEWISVILLE, NC 27023 434-688-0609 rllomas@lrlomaspe.com		



Luis R. Lomas P.E.
TX No: 101889

REVISIONS			
REV	DESCRIPTION	DATE	APPROVED



NOTES:
 1. SASH SIZE: 40 7/8" X 35 1/4"
 2. D.L.O. SIZE: 39 1/16" X 32 5/8"

DESIGN PRESSURE RATING	IMPACT RATING
±50PSF	NONE

44" X 72" UNIT SHOWN. OTHER SIZES APPROVED AS LONG AS FRAME AREA DOES NOT EXCEED 22.0 FT²

SIGNED: 09/29/2020

HARDWARE SCHEDULE	
A.	(2) BLOCK AND TACKLE BALANCE SYSTEM WITH LOCKING SHOE, AT EACH JAMB
B.	(2) METAL PIVOT BAR, AT EACH END OF BOTTOM RAIL
C.	(2) PLASTIC TILT LATCH, AT EACH END OF LOCK RAIL
D.	(2) METAL CAM LOCK WITH KEEPER, 10 1/2" IN FROM EACH END OF LOCK RAIL
E.	(2) COMPOSITE CAM LOCK WITH KEEPER, 10 1/2" IN FROM EACH END OF LOCK RAIL
F.	ALUMINUM REINFORCEMENT (A6189) AT FIXED MEETING RAIL
G.	ALUMINUM REINFORCEMENT (10300082) AT LOCK RAIL, BOTTOM RAIL AND SASH STILES

WINDOW MART, INC.
 5760 ALBERT PIKE
 ROYAL, AR 71968

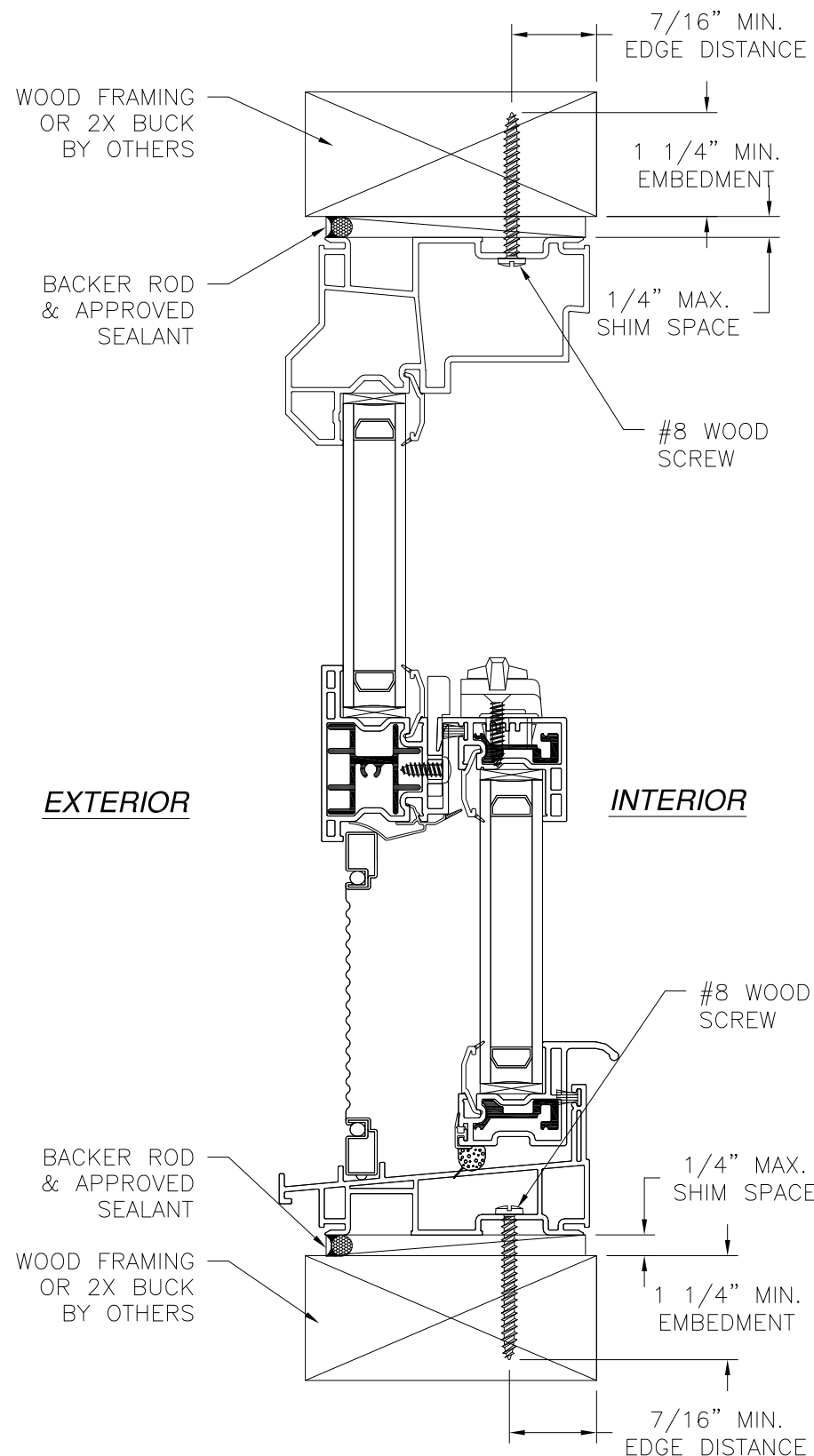
7100/7150 PVC SINGLE HUNG WINDOW REINFORCED
 44" X 72" NON-IMPACT
 ELEVATIONS

DRAWN: A.R.	DWG NO. 08-03617	REV -
SCALE NTS	DATE 09/22/2020	SHEET 2 OF 6

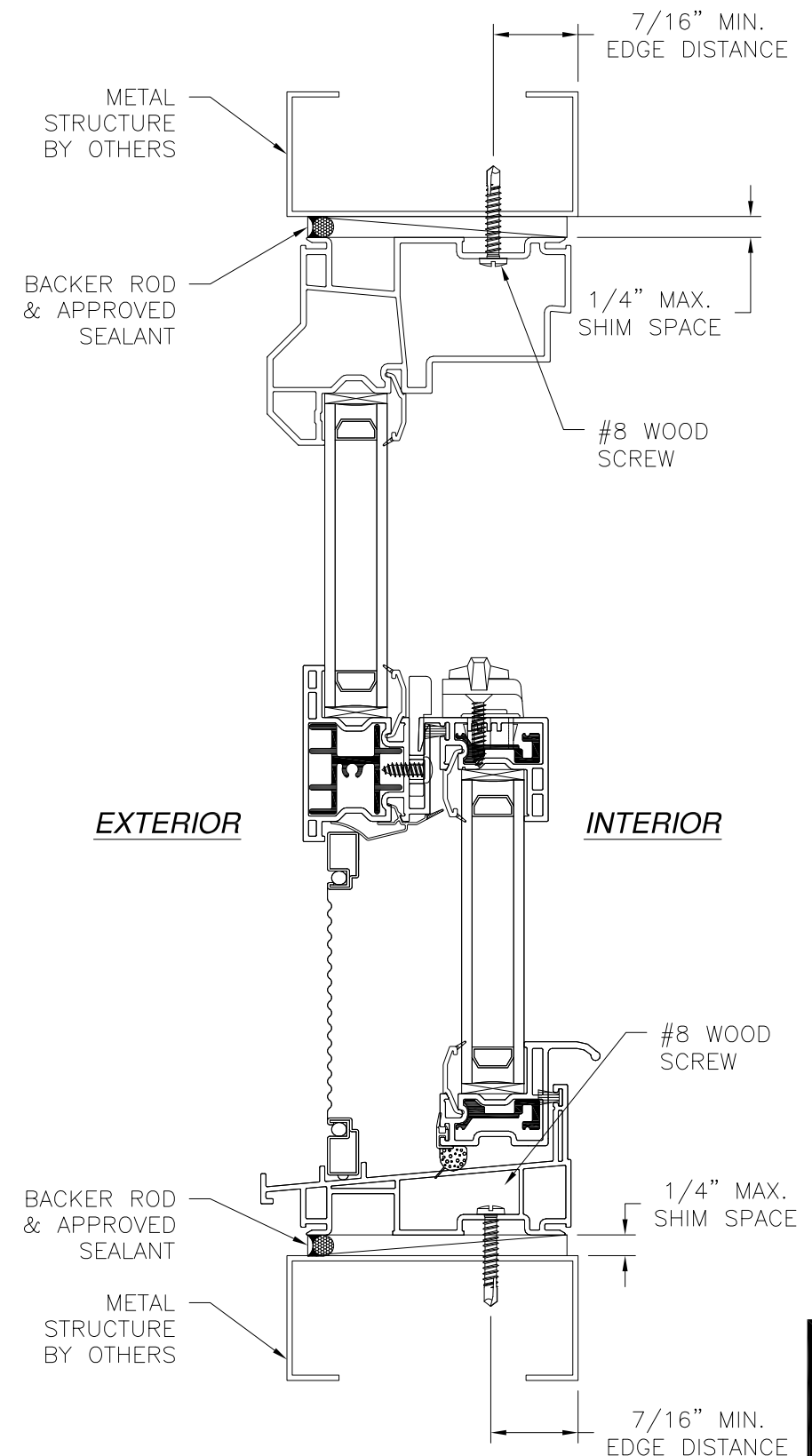
L. ROBERTO LOMAS P.E.
 1432 WOODFORD RD LEWISVILLE, NC 27023
 434-688-0609 rllomas@lrlomaspe.com



Luis R. Lomas P.E.
 TX No: 101889

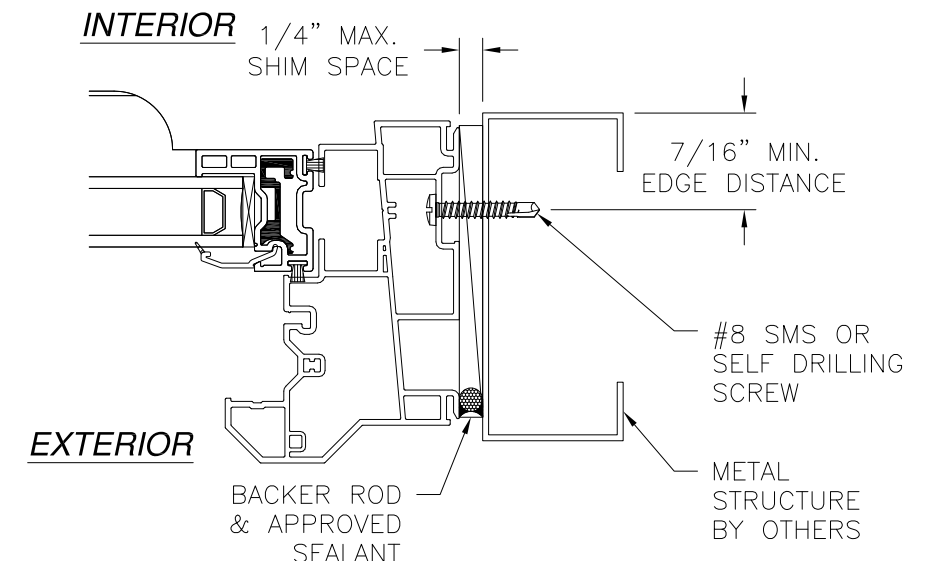


VERTICAL CROSS SECTION
WOOD FRAMING OR 2X BUCK INSTALLATION

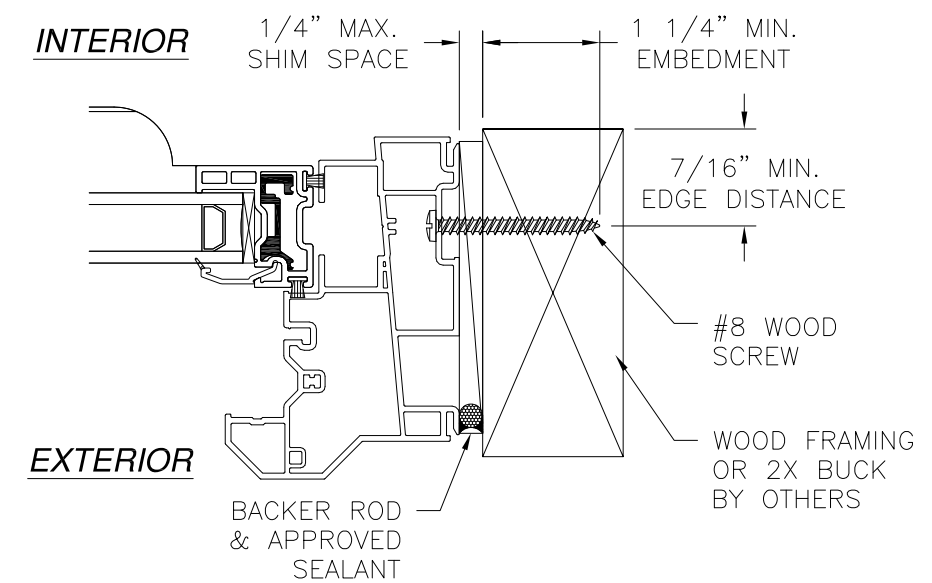


VERTICAL CROSS SECTION
METAL STRUCTURE INSTALLATION

REVISIONS			
REV	DESCRIPTION	DATE	APPROVED



JAMB INSTALLATION DETAIL
METAL STRUCTURE INSTALLATION



JAMB INSTALLATION DETAIL
WOOD FRAMING OR 2X BUCK INSTALLATION

SIGNED: 09/29/2020

- NOTES:**
1. INTERIOR AND EXTERIOR FINISHES, BY OTHERS, NOT SHOWN FOR CLARITY.
 2. PERIMETER AND JOINT SEALANT BY OTHERS TO BE DESIGNED IN ACCORDANCE WITH ASTM E2112

WINDOW MART, INC.
5760 ALBERT PIKE
ROYAL, AR 71968

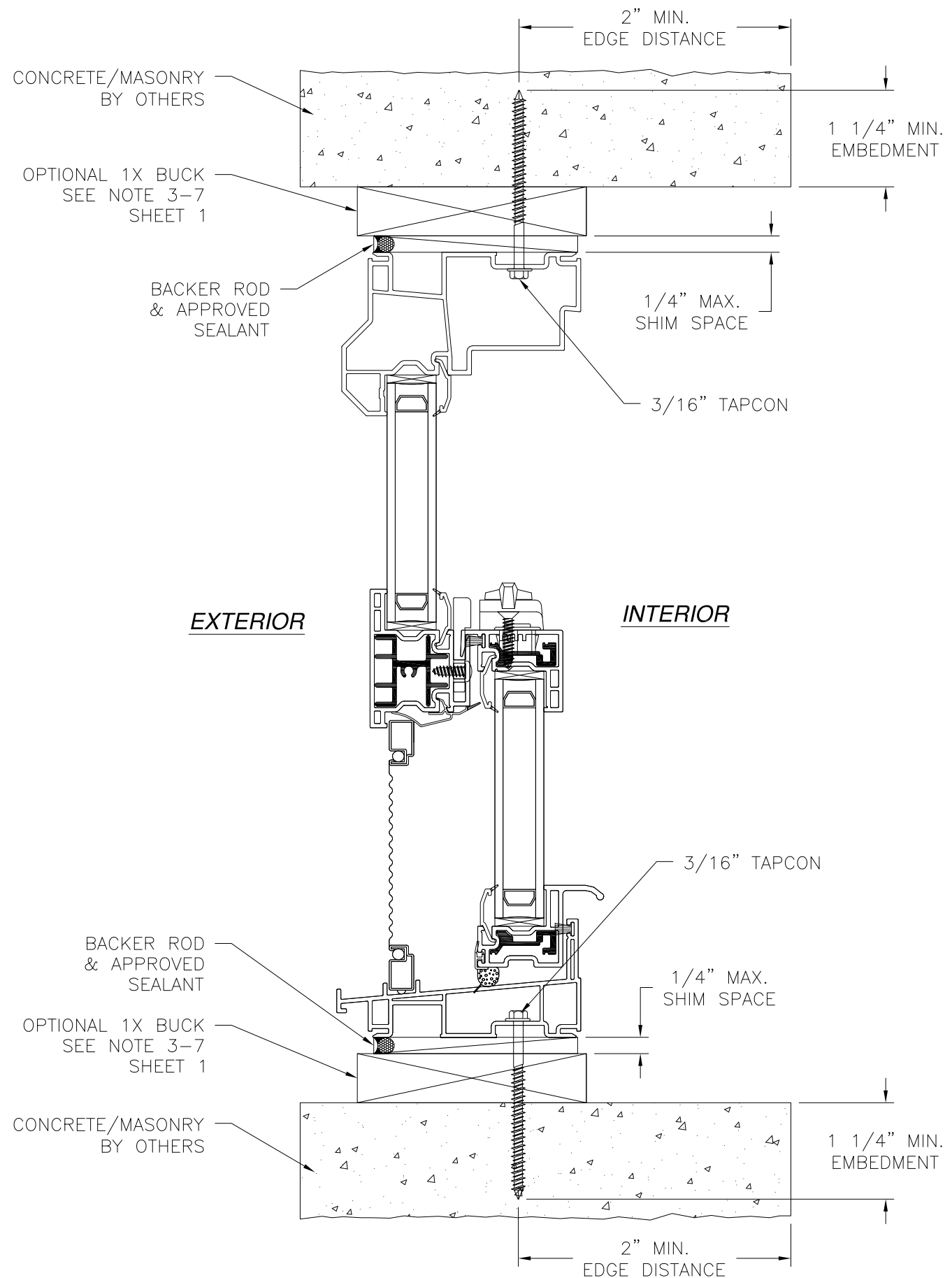
7100/7150 PVC SINGLE HUNG WINDOW REINFORCED
44" X 72" NON-IMPACT
INSTALLATION DETAILS

DRAWN: A.R.	DWG NO. 08-03617	REV -
SCALE NTS	DATE 09/22/2020	SHEET 3 OF 6

L. ROBERTO LOMAS P.E.
1432 WOODFORD RD LEWISVILLE, NC 27023
434-688-0609 rllomas@rlomaspe.com

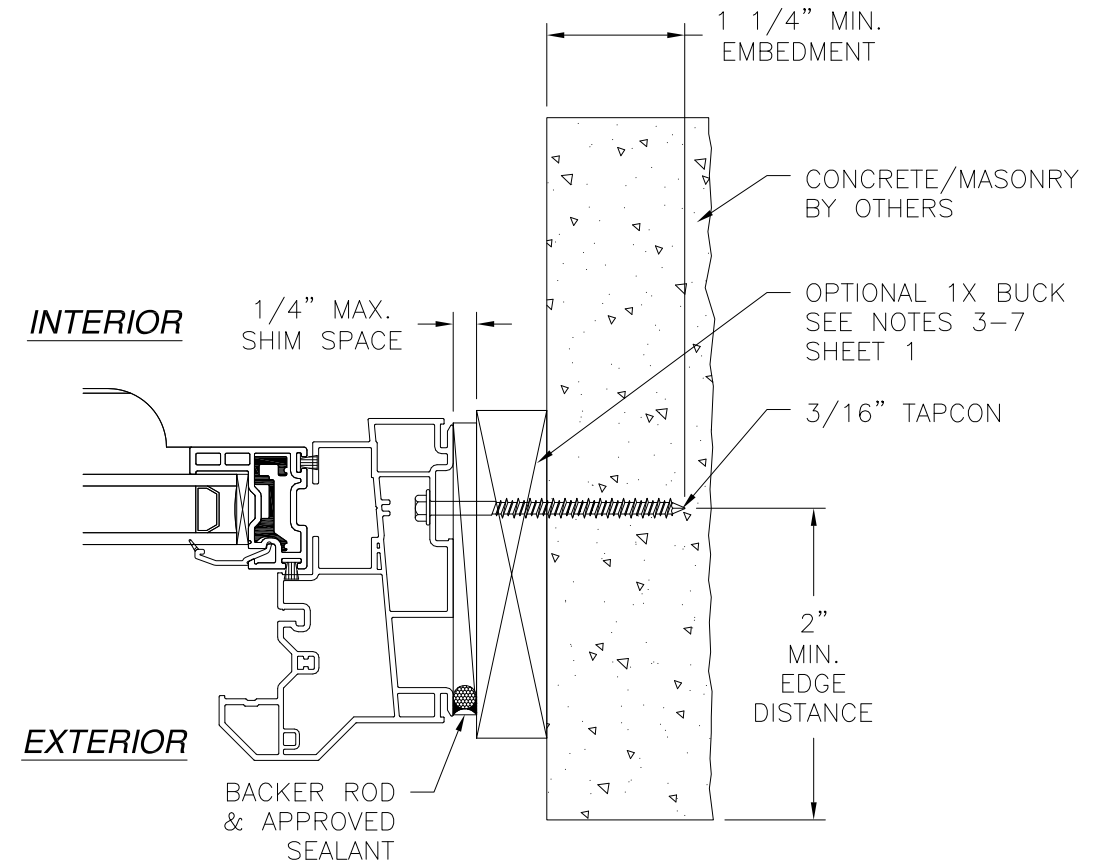


Luis R. Lomas P.E.
TX No: 101889



**VERTICAL CROSS SECTION
CONCRETE/MASONRY INSTALLATION**

REVISIONS			
REV	DESCRIPTION	DATE	APPROVED



**JAMB INSTALLATION DETAIL
CONCRETE/MASONRY INSTALLATION**

- NOTES:**
1. INTERIOR AND EXTERIOR FINISHES, BY OTHERS, NOT SHOWN FOR CLARITY.
 2. PERIMETER AND JOINT SEALANT BY OTHERS TO BE DESIGNED IN ACCORDANCE WITH ASTM E2112

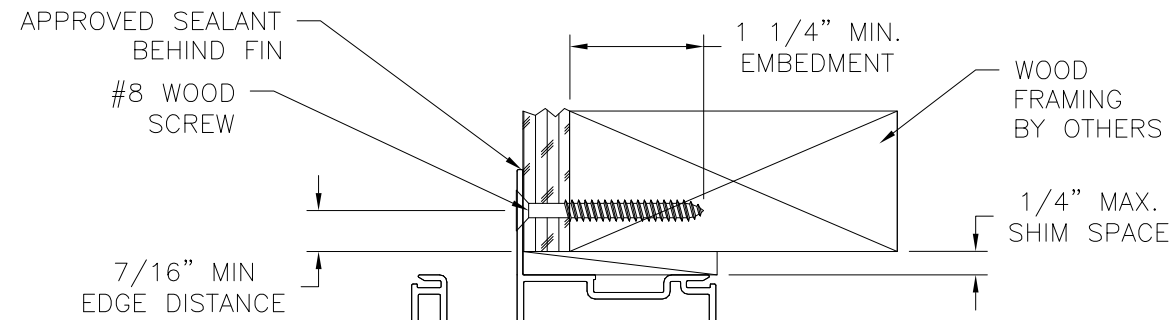
SIGNED: 09/29/2020

WINDOW MART, INC. 5760 ALBERT PIKE ROYAL, AR 71968		
7100/7150 PVC SINGLE HUNG WINDOW REINFORCED 44" X 72" NON-IMPACT INSTALLATION DETAILS		
DRAWN: A.R.	DWG NO. 08-03617	REV -
SCALE NTS	DATE 09/22/2020	SHEET 4 OF 6
L. ROBERTO LOMAS P.E. 1432 WOODFORD RD LEWISVILLE, NC 27023 434-688-0609 rllomas@lrlomaspe.com		



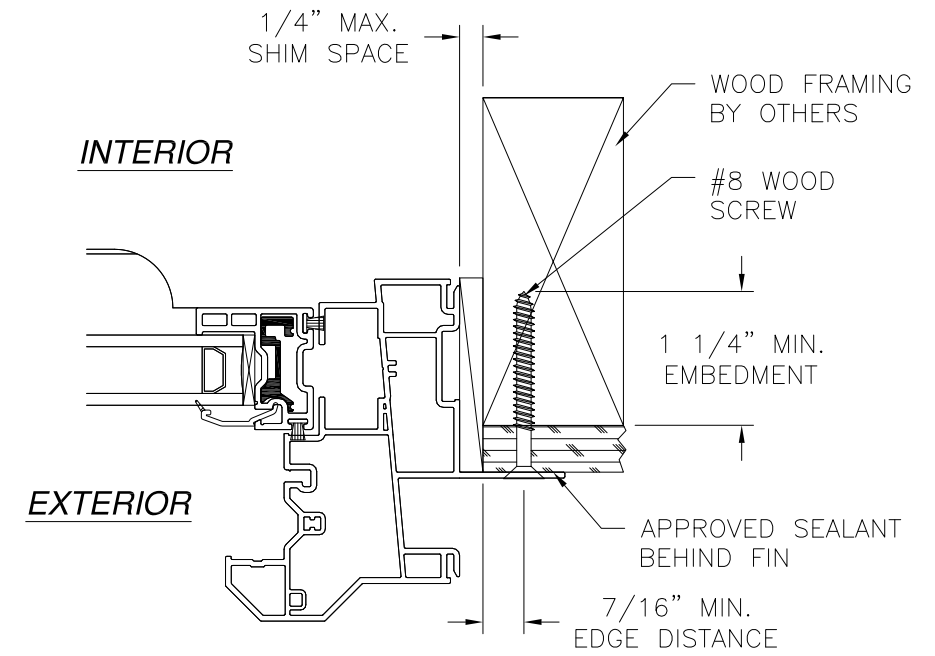
Luis R. Lomas P.E.
TX No: 101889

REVISIONS			
REV	DESCRIPTION	DATE	APPROVED



EXTERIOR

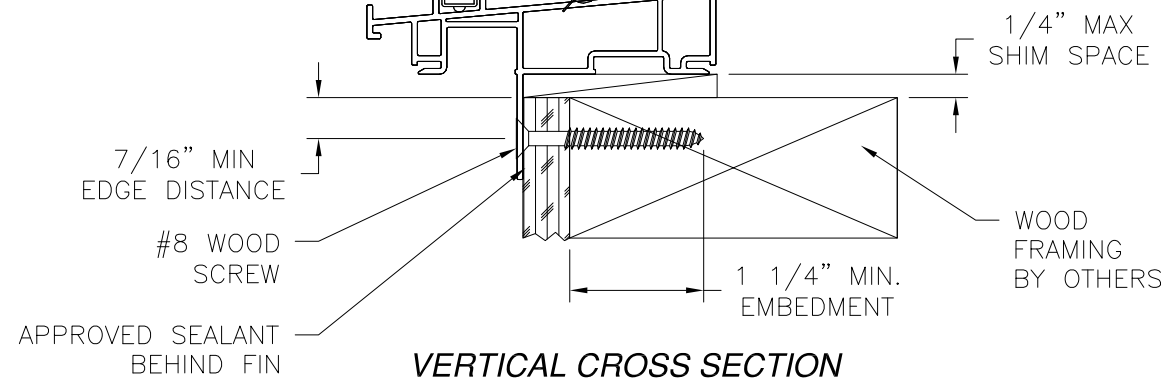
INTERIOR



INTERIOR

EXTERIOR

JAMB INSTALLATION DETAIL
WOOD FRAMING OR 2X BUCK INSTALLATION



VERTICAL CROSS SECTION
WOOD FRAMING OR 2X BUCK INSTALLATION

NOTES:

1. INTERIOR AND EXTERIOR FINISHES, BY OTHERS, NOT SHOWN FOR CLARITY.
2. PERIMETER AND JOINT SEALANT BY OTHERS TO BE DESIGNED IN ACCORDANCE WITH ASTM E2112

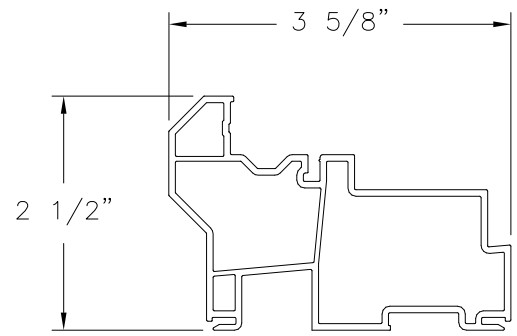
SIGNED: 09/29/2020

WINDOW MART, INC. 5760 ALBERT PIKE ROYAL, AR 71968		
7100/7150 PVC SINGLE HUNG WINDOW REINFORCED 44" X 72" NON-IMPACT FIN INSTALLATION DETAILS		
DRAWN: A.R.	DWG NO. 08-03617	REV -
SCALE NTS	DATE 09/22/2020	SHEET 5 OF 6
L. ROBERTO LOMAS P.E. 1432 WOODFORD RD LEWISVILLE, NC 27023 434-688-0609 rllomas@lrlomaspe.com		

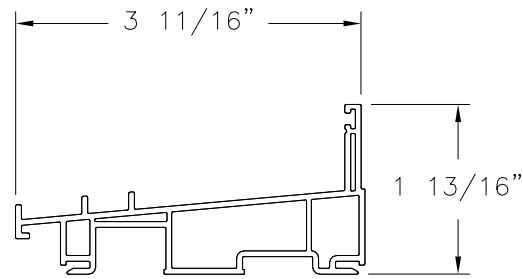


Luis R. Lomas P.E.
TX No: 101889

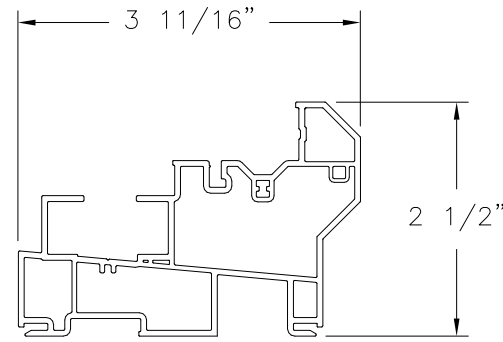
REVISIONS			
REV	DESCRIPTION	DATE	APPROVED



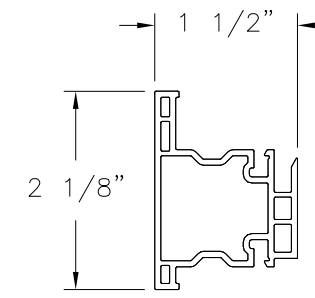
HEAD FRAME
VINYL PVC (10008676)



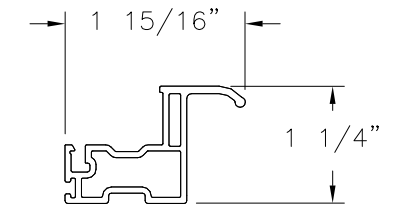
SILL FRAME
VINYL PVC (10008672)



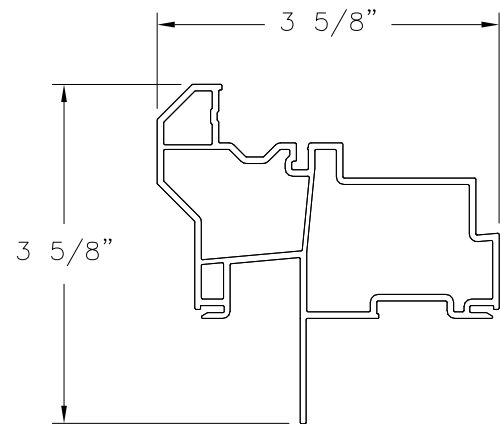
JAMB FRAME
VINYL PVC (10008675)



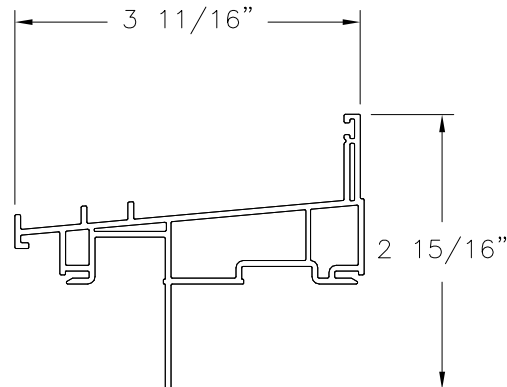
FIXED MEETING RAIL
VINYL PVC (10008511)



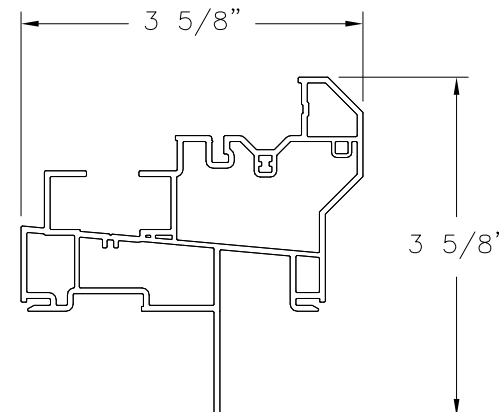
LIFT RAIL
VINYL PVC (10008882)



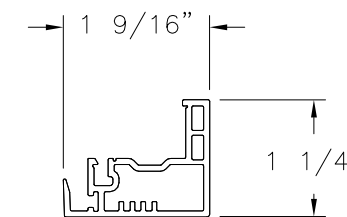
**HEAD FRAME
FIN INSTALLATION**
VINYL PVC (10008676)



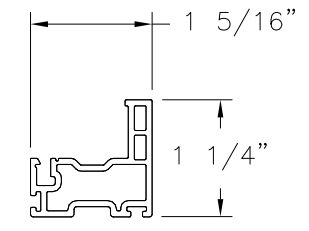
**SILL FRAME
FIN INSTALLATION**
VINYL PVC (10008672)



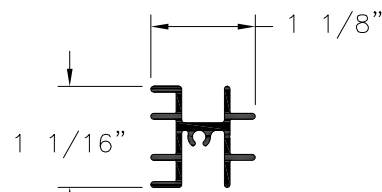
**JAMB FRAME
FIN INSTALLATION**
VINYL PVC (10008675)



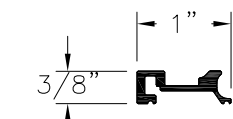
LOCK RAIL
VINYL PVC (10008895)



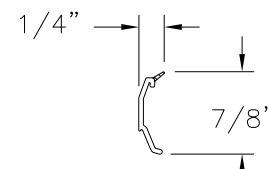
STILE
VINYL PVC (10008875)



REINFORCEMENT
ALUMINUM (A6189)



REINFORCEMENT
ALUMINUM 6005-T5 (10300082)



GLAZING BEAD
VINYL PVC (10005473)

SIGNED: 09/29/2020

WINDOW MART, INC.
5760 ALBERT PIKE
ROYAL, AR 71968

7100/7150 PVC SINGLE HUNG WINDOW REINFORCED
44" X 72" NON-IMPACT
COMPONENTS

DRAWN: A.R.	DWG NO. 08-03617	REV -
SCALE NTS	DATE 09/22/2020	SHEET 6 OF 6

L. ROBERTO LOMAS P.E.
1432 WOODFORD RD LEWISVILLE, NC 27023
434-688-0609 rllomas@lrlomaspe.com



Luis R. Lomas P.E.
TX No: 101889