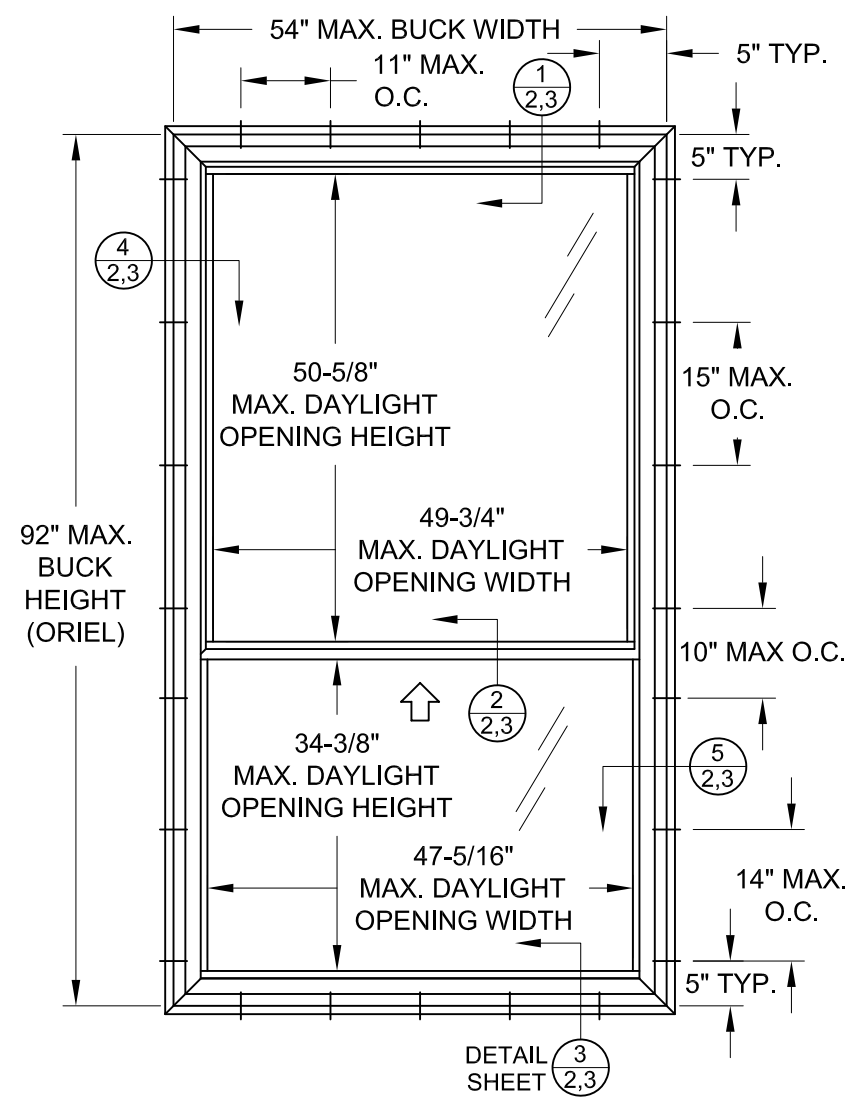
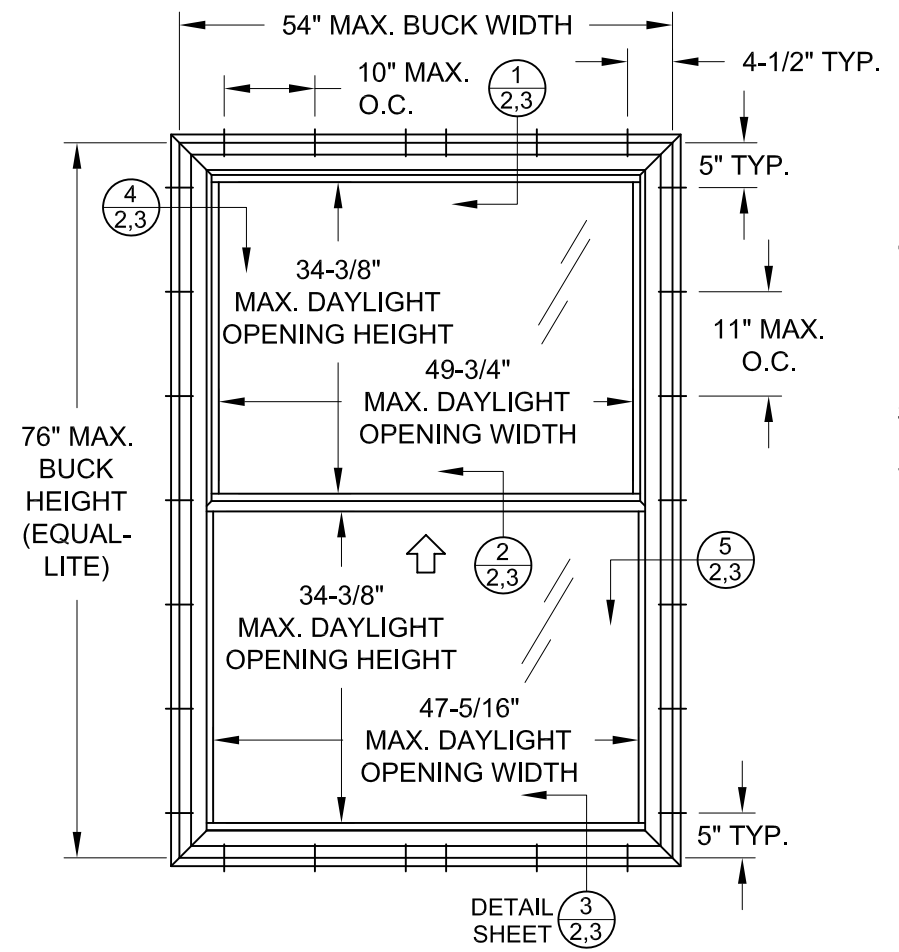


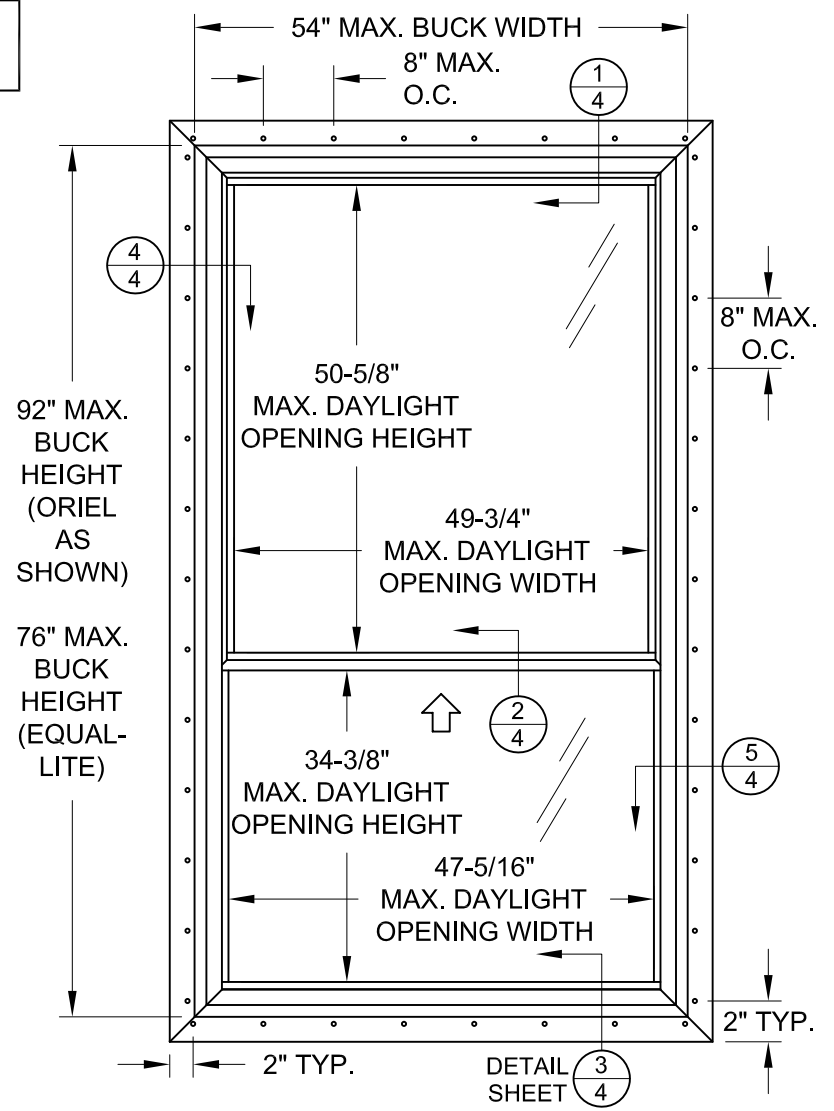
DP RATING	LARGE & SMALL MISSILE IMPACT RESISTANT
SEE TABLE 1	



TYP. ANCHOR LOCATIONS, TESTED SIZE (FLANGED FRAME, EQUAL-LEG SIM.)



TYP. ANCHOR LOCATIONS, TESTED SIZE (FLANGED FRAME, EQUAL-LEG SIM.)



TYP. ANCHOR LOCATIONS, TESTED SIZE (INTEGRAL FIN FRAME)

STATE OF TEXAS
ANTHONY LYNN MILLER
106954
LICENSED PROFESSIONAL ENGINEER
A. Lynn Miller 01/05/22
A. LYNN MILLER, P.E., P.E.# 106954

FIRM REG. NO.: F-23136
COPYRIGHT © 2022
NEWSOUTH WINDOW SOLUTIONS
LIMITED LICENSE TO MAKE COPIES FOR PERMITTING

PREPARED BY: A. LYNN MILLER, P.E.
1070 TECHNOLOGY DR
N. VENICE, FL 34275
(941)-480-1600

9450 SERIES SINGLE HUNG
GEN. NOTES, DESIGN PRESSURES AND ANCHOR ELEVATIONS
NEWSOUTH WINDOW SOLUTIONS
10741 CROSSROADS COMMERCE BLVD.
TAMPA, FL 33610



MODEL 9450
SINGLE HUNG, TILT WINDOW,
IMPACT RESISTANT, NON-HVHZ,
FLANGE, EQUAL-LEG & FIN FRAMES

- 1) THIS PRODUCT HAS BEEN DESIGNED & TESTED TO COMPLY WITH THE REQUIREMENTS OF THE 2018 INTERNATIONAL BUILDING CODE (IBC) AND THE 2018 INTERNATIONAL RESIDENTIAL CODE (IRC) FOR THE DESIGN PRESSURES LISTED.
- 2) SHUTTERS ARE NOT REQUIRED WHEN USED IN WIND-BORNE DEBRIS REGIONS.
- 3) MASONRY ANCHORS MAY BE USED INTO WOOD. ALL WOOD BUCKS LESS THAN 1-1/2" THICK ARE TO BE CONSIDERED 1X INSTALLATIONS. 1X WOOD BUCKS ARE OPTIONAL IF UNIT IS INSTALLED DIRECTLY TO SUBSTRATE. WOOD BUCKS DEPICTED AS 2X ARE 1-1/2" THICK OR GREATER.
- 4) ANCHOR EMBEDMENT TO BASE MATERIAL SHALL BE BEYOND WALL DRESSING OR STUCCO. USE ANCHORS OF SUFFICIENT LENGTH.

5) MAX. 1/4" SHIMS ARE REQUIRED AT EACH ANCHOR LOCATION WHERE THE PRODUCT IS NOT FLUSH TO THE SUBSTRATE. USE SHIMS CAPABLE OF TRANSFERRING APPLIED LOADS.

6) THE ANCHORAGE METHODS SHOWN HAVE BEEN DESIGNED TO RESIST THE WIND LOADS CORRESPONDING TO THE REQUIRED DESIGN PRESSURE. THE 33-1/3% STRESS INCREASE HAS NOT BEEN USED IN THE DESIGN OF THIS PRODUCT. THE 1.6 LOAD DURATION FACTOR WAS USED FOR THE EVALUATION OF ANCHORS INTO WOOD. ANCHORS THAT COME INTO CONTACT WITH OTHER DISSIMILAR MATERIALS SHALL MEET THE REQUIREMENTS OF THE BUILDING CODE FOR CORROSION RESISTANCE.

TABLE 1: DESIGN PRESSURES

Buck Width	Buck Height	Configuration	Frame Type	Glass Type (see sheet 6)	Certification	Design Pressure	
						(+) psf	(-) psf
54"	76"	Equal-lite	All	1	NI011866, NI011905	55.0	65.0
40"	48"	Equal-lite	Flange, Equal-Leg	2	NI014874	65.0	85.0
54"	92"	Oriel	All	1 or 3 @ sash 3 @ fixed lite	NI015466	55.0	55.0

FOR SIZES NOT SHOWN, ROUND UP TO THE NEXT AVAILABLE WIDTH OR HEIGHT DIMENSION.

REVISION:			
DATE:			
#:			
DATE:	12/12/21		
SCALE:	NTS		
BY:	JENS ROSOWSKI		
DRAWING #:	SH9450-TDI-01		
SHEET:	1 OF 6		

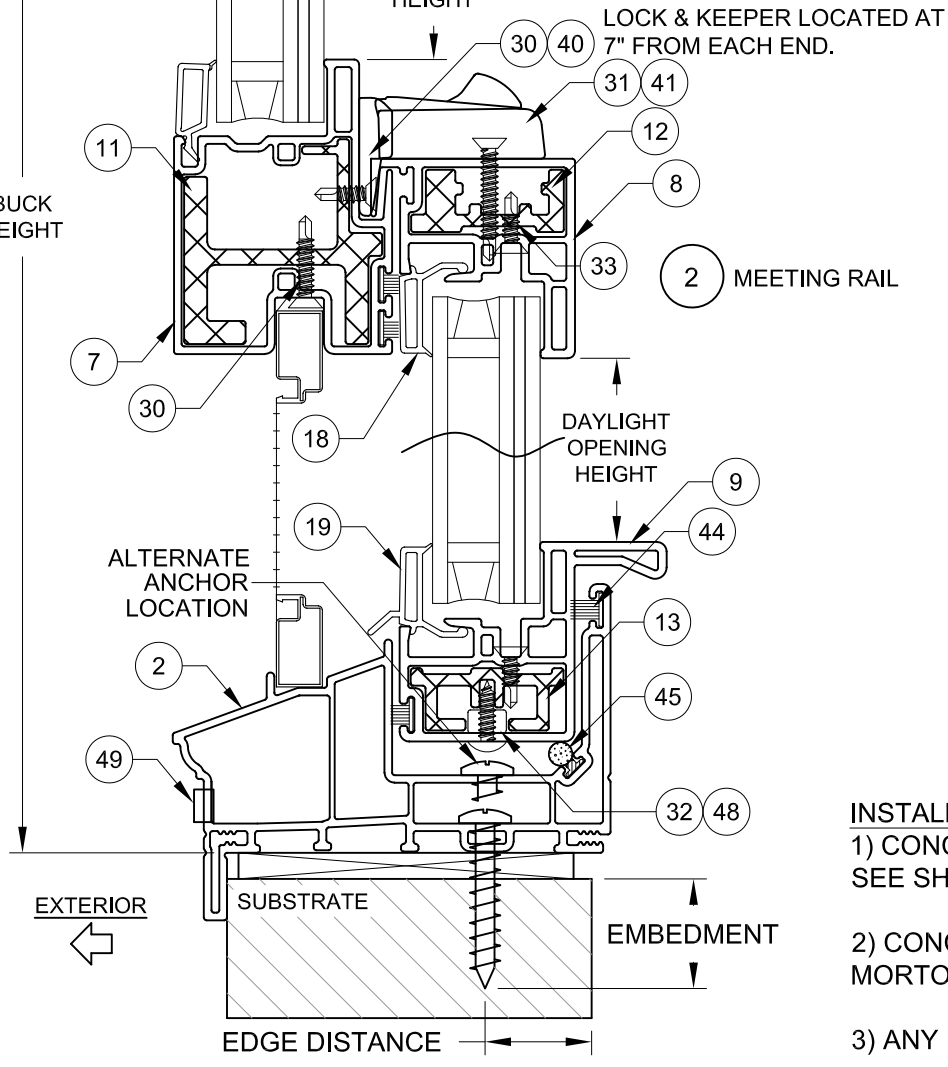
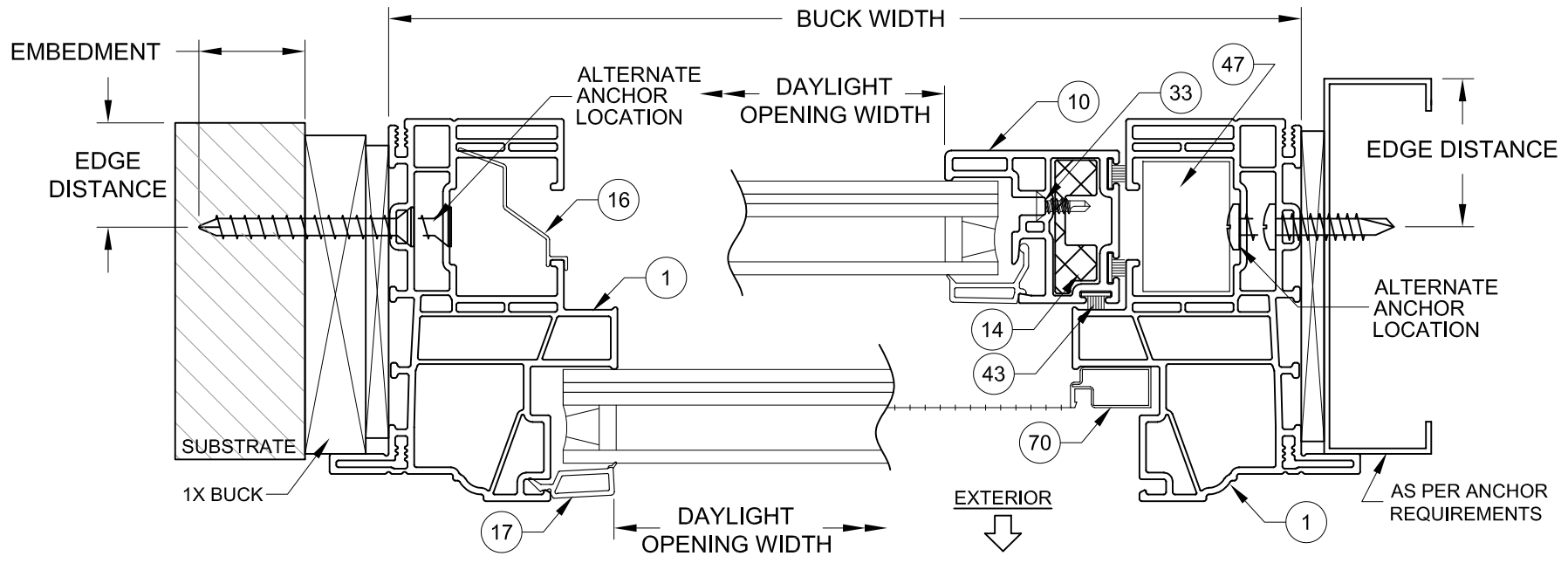
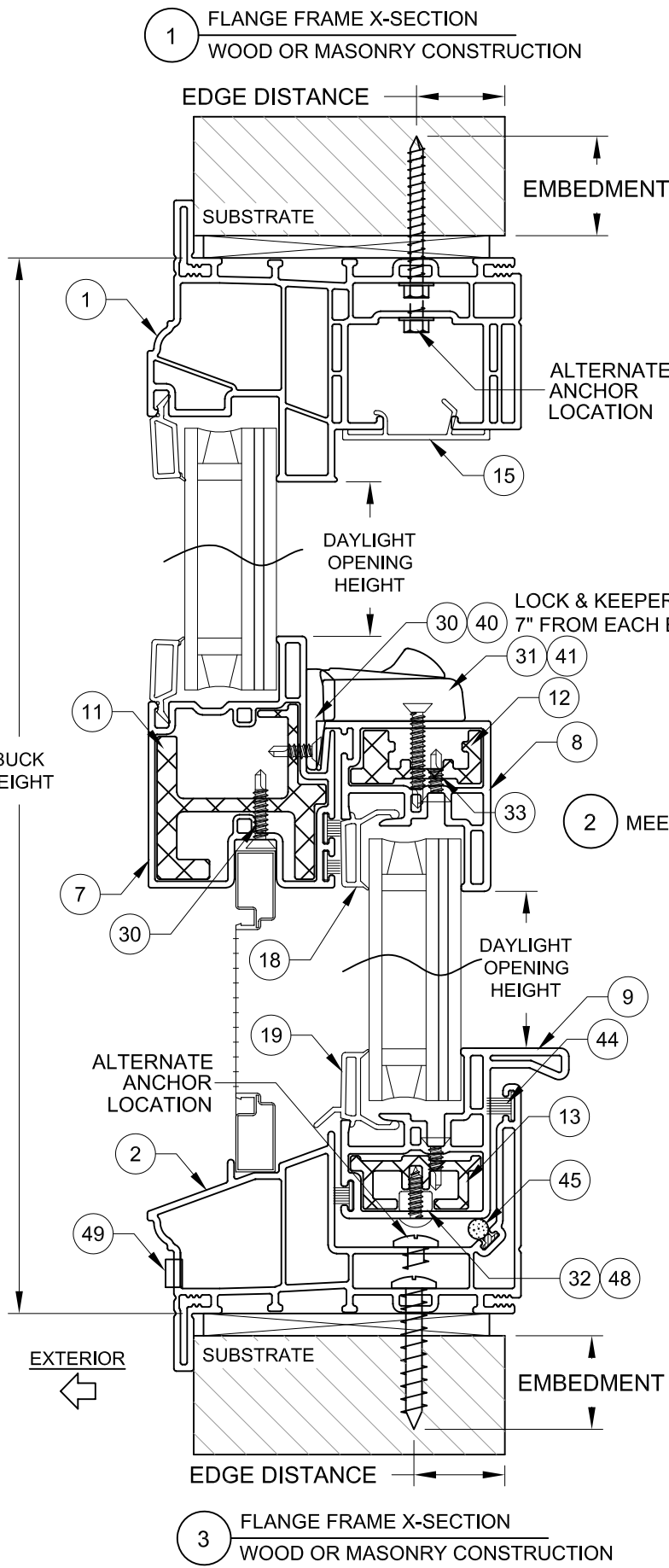
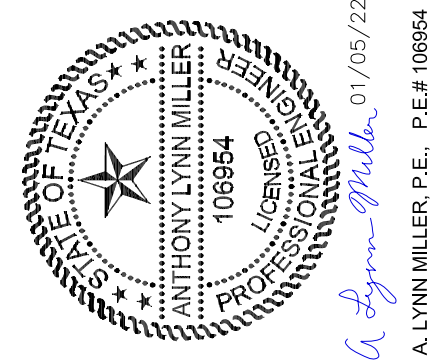


TABLE 2: INSTALLATION ANCHORS

Anchor	Substrate	Minimum Edge Distance	Minimum Embedment
#10 or #12 Steel or 410 SS Screw	Southern Pine (SG = .55)	9/16"	1-3/8"
	Aluminum, 6063-T5 min.	3/8"	0.050"
	Steel Stud, Gr. 33 min.	3/8"	0.045" (20 Ga)
	A36 Steel	3/8"	0.050"
3/16" Steel Ultracon	Concrete (min. 2.9 ksi)	1"	1-3/8"
	Grouted CMU, (ASTM C-90)	2-1/2"	2-1/4"
	Southern Pine (SG = .55)	1"	1-3/8"
3/16" Steel Ultracon+	Concrete (min. 2.9 ksi)	1"	1-3/4"
	UngROUTED CMU, (ASTM C-90)	1"	1-1/4"
	Southern Pine (SG = .55)	1"	1-3/8"
1/4" Steel Ultracon or Ultracon+	Concrete (min. 3.0 ksi)	1"	1-3/8"
	UngROUTED CMU, (ASTM C-90)	1"	1-1/4"
	Southern Pine (SG = .55)	1"	1-3/8"

- 1) ANCHOR MUST EXTEND A MINIMUM OF 3 THREADS BEYOND ANY METAL SUBSTRATE.
- 2) "UNGROUTED CMU" VALUES MAY BE USED FOR GROUDED CMU APPLICATIONS.
- 3) ALL ANCHOR HEAD TYPES ARE APPLICABLE.

INSTALLATION NOTES:

- 1) CONCRETE ANCHOR LOCATIONS AT THE CORNERS MAY BE LOWERED TO MAINTAIN THE MINIMUM EDGE DISTANCE TO MORTOR JOINTS. SEE SHEET 1 FOR ANCHOR SPACING REQUIREMENTS.
- 2) CONCRETE ANCHOR LOCATIONS NOTED AS "MAX. ON CENTER" MUST BE ADJUSTED TO MAINTAIN THE MINIMUM EDGE DISTANCE TO MORTOR JOINTS. ADDITIONAL CONCRETE ANCHORS MAY BE REQUIRED TO ENSURE THE "MAX. ON CENTER" DIMENSION IS NOT EXCEEDED.
- 3) ANY INSTALLATION OPTION SHOWN (2X BUCK, 1X BUCK, DIRECT TO MASONRY, STEEL STUD) MAY BE USED ON ANY SIDE OF THE WINDOW.
- 4) USE ONLY SUBSTRATE APPROPRIATE ANCHORS LISTED IN ANCHOR TABLE. FOLLOW EMBEDMENT AND EDGE DISTANCE LIMITS. MAX. SHIM THICKNESS TO BE 1/4". ANY INSTALLATION OPTION SHOWN MAY BE USED ON ANY OR ALL SIDES OF THE WINDOW.

FIRM REG. NO.: F-23136
 COPYRIGHT © 2022
 NEWSOUTH WINDOW SOLUTIONS
 LIMITED LICENSE TO MAKE
 COPIES FOR PERMITTING

PREPARED BY: A. LYNN MILLER, P.E.
 1070 TECHNOLOGY DR
 N. VENICE, FL 34275
 (941)-480-1600

9450 SERIES SINGLE HUNG
 FLANGE INSTALLATION SECTION VIEWS
 NEWSOUTH WINDOW SOLUTIONS
 10741 CROSSROADS COMMERCE BLVD.
 TAMPA, FL 33610

REVISION:			
DATE:			
#:			
DATE:	12/12/21		
SCALE:	NTS		
BY:	JENS ROSOWSKI		
DRAWING #:	SH9450-TDI-01		
SHEET:	2 OF 6		

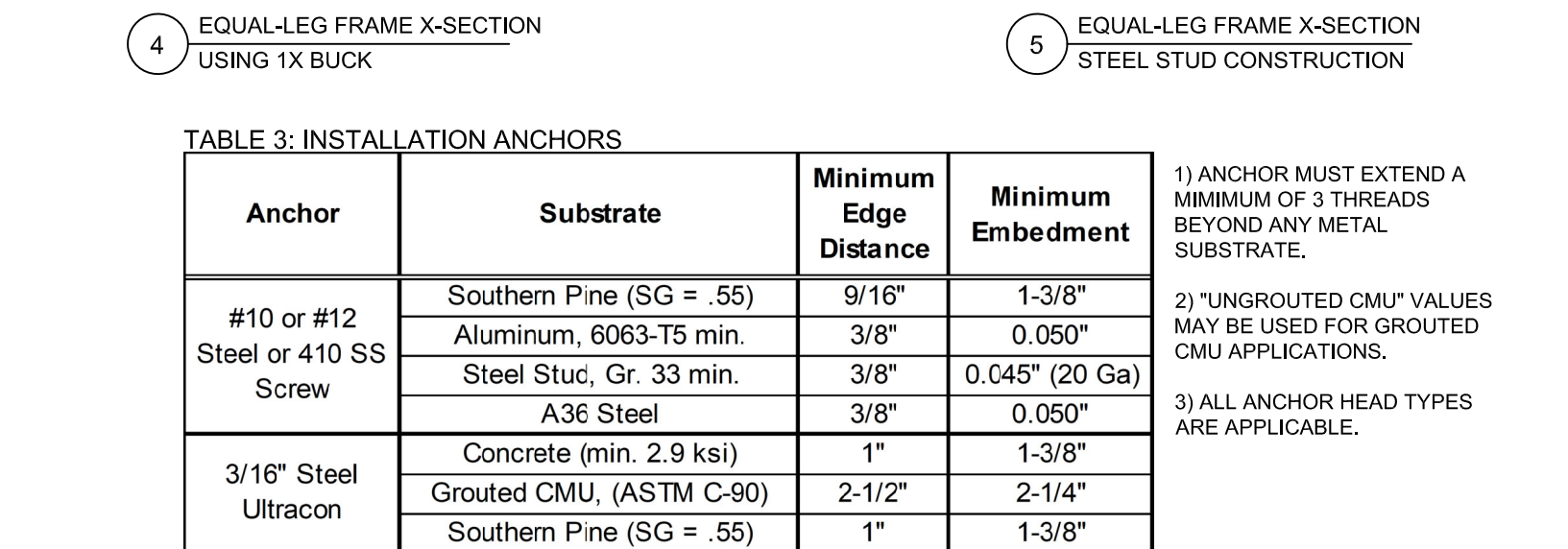
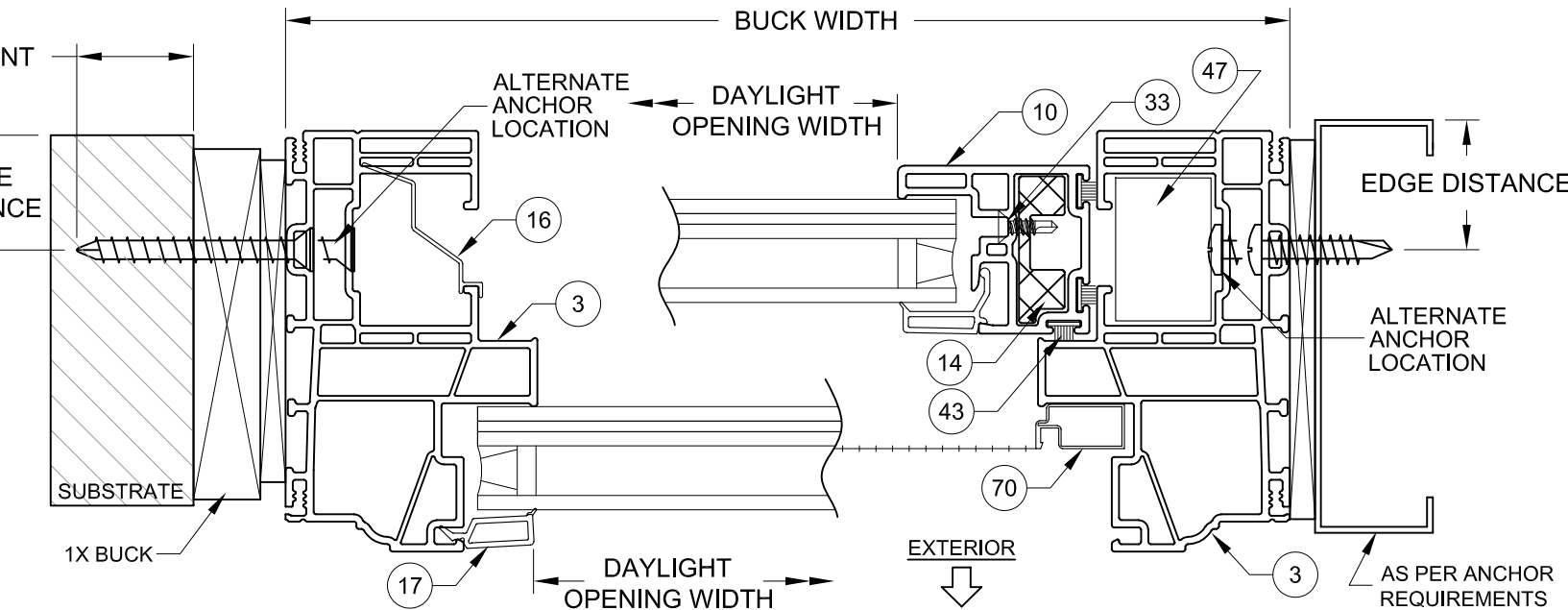
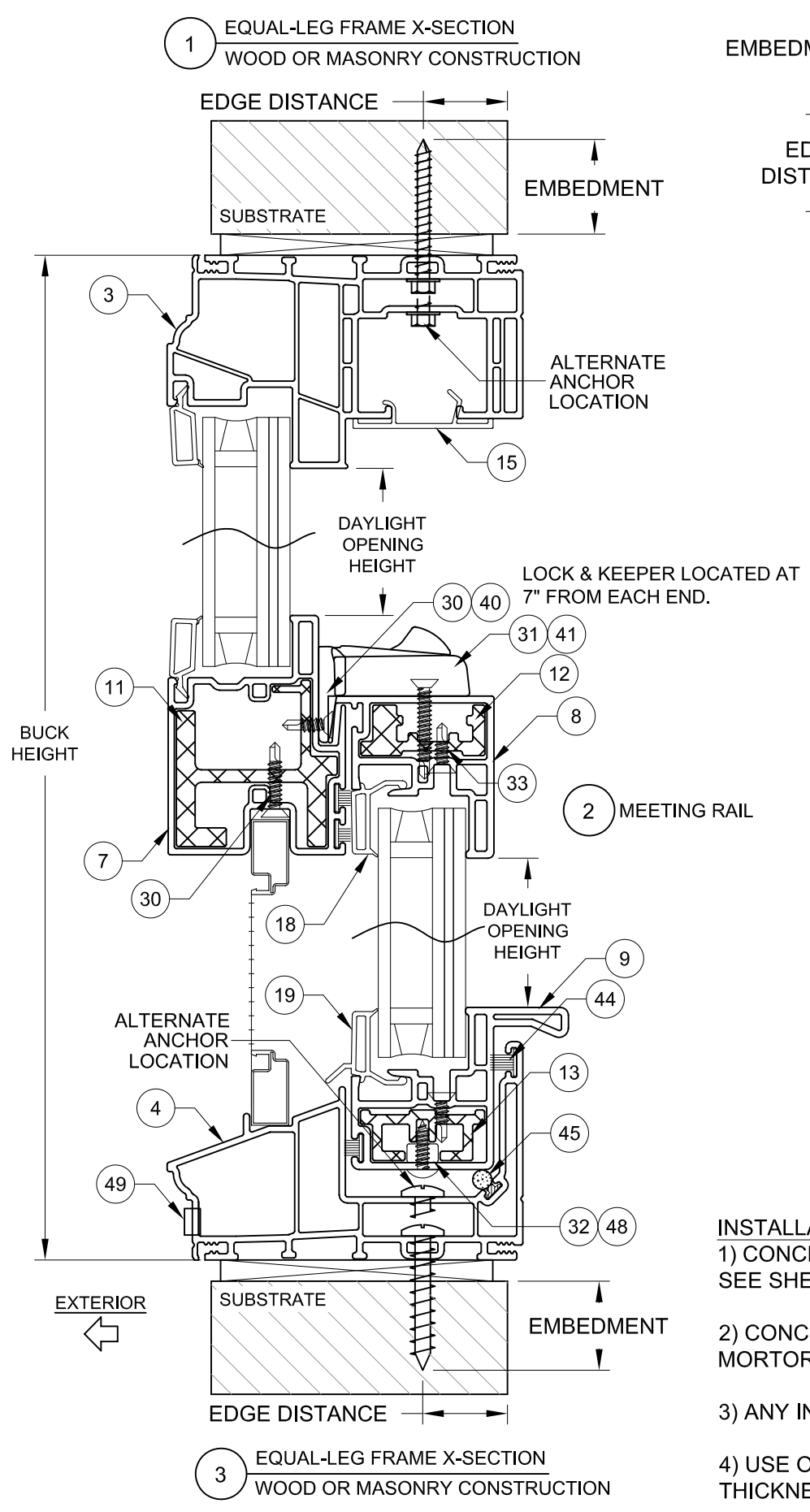
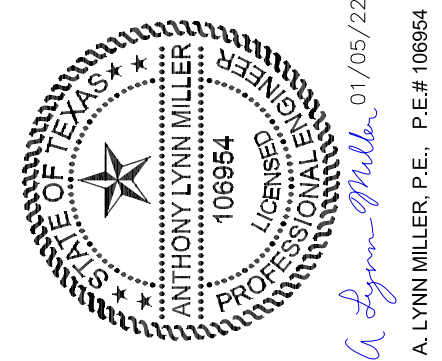


TABLE 3: INSTALLATION ANCHORS

Anchor	Substrate	Minimum Edge Distance	Minimum Embedment
#10 or #12 Steel or 410 SS Screw	Southern Pine (SG = .55)	9/16"	1-3/8"
	Aluminum, 6063-T5 min.	3/8"	0.050"
	Steel Stud, Gr. 33 min.	3/8"	0.045" (20 Ga)
	A36 Steel	3/8"	0.050"
3/16" Steel Ultracon	Concrete (min. 2.9 ksi)	1"	1-3/8"
	Grouted CMU, (ASTM C-90)	2-1/2"	2-1/4"
	Southern Pine (SG = .55)	1"	1-3/8"
3/16" Steel Ultracon+	Concrete (min. 2.9 ksi)	1"	1-3/4"
	UngROUTED CMU, (ASTM C-90)	1"	1-1/4"
	Southern Pine (SG = .55)	1"	1-3/8"
1/4" Steel Ultracon or Ultracon+	Concrete (min. 3.0 ksi)	1"	1-3/8"
	UngROUTED CMU, (ASTM C-90)	1"	1-1/4"
	Southern Pine (SG = .55)	1"	1-3/8"

- 1) ANCHOR MUST EXTEND A MINIMUM OF 3 THREADS BEYOND ANY METAL SUBSTRATE.
- 2) "UNGROUTED CMU" VALUES MAY BE USED FOR GROUDED CMU APPLICATIONS.
- 3) ALL ANCHOR HEAD TYPES ARE APPLICABLE.

INSTALLATION NOTES:

- 1) CONCRETE ANCHOR LOCATIONS AT THE CORNERS MAY BE LOWERED TO MAINTAIN THE MINIMUM EDGE DISTANCE TO MORTOR JOINTS. SEE SHEET 1 FOR ANCHOR SPACING REQUIREMENTS.
- 2) CONCRETE ANCHOR LOCATIONS NOTED AS "MAX. ON CENTER" MUST BE ADJUSTED TO MAINTAIN THE MINIMUM EDGE DISTANCE TO MORTOR JOINTS. ADDITIONAL CONCRETE ANCHORS MAY BE REQUIRED TO ENSURE THE "MAX. ON CENTER" DIMENSION IS NOT EXCEEDED.
- 3) ANY INSTALLATION OPTION SHOWN (2X BUCK, 1X BUCK, DIRECT TO MASONRY, STEEL STUD) MAY BE USED ON ANY SIDE OF THE WINDOW.
- 4) USE ONLY SUBSTRATE APPROPRIATE ANCHORS LISTED IN ANCHOR TABLE. FOLLOW EMBEDMENT AND EDGE DISTANCE LIMITS. MAX. SHIM THICKNESS TO BE 1/4". ANY INSTALLATION OPTION SHOWN MAY BE USED ON ANY OR ALL SIDES OF THE WINDOW.

FIRM REG. NO.: F-23136
 COPYRIGHT © 2022
 NEWSOUTH WINDOW SOLUTIONS
 LIMITED LICENSE TO MAKE
 COPIES FOR PERMITTING

PREPARED BY: A. LYNN MILLER, P.E.
 1070 TECHNOLOGY DR
 N. VENICE, FL 34275
 (941)-480-1600

9450 SERIES SINGLE HUNG	BY:			
EQUAL-LEG INSTALLATION SECTION VIEWS	REVISION:			
NEWSOUTH WINDOW SOLUTIONS 10741 CROSSROADS COMMERCE BLVD. TAMPA, FL 33610	DATE:			
	#:			
	DATE:	12/12/21		
	SCALE:	NTS		
	BY:	JENS ROSOWSKI		
	DRAWING #:	SH9450-TDI-01		
	SHEET:	3 OF 6		

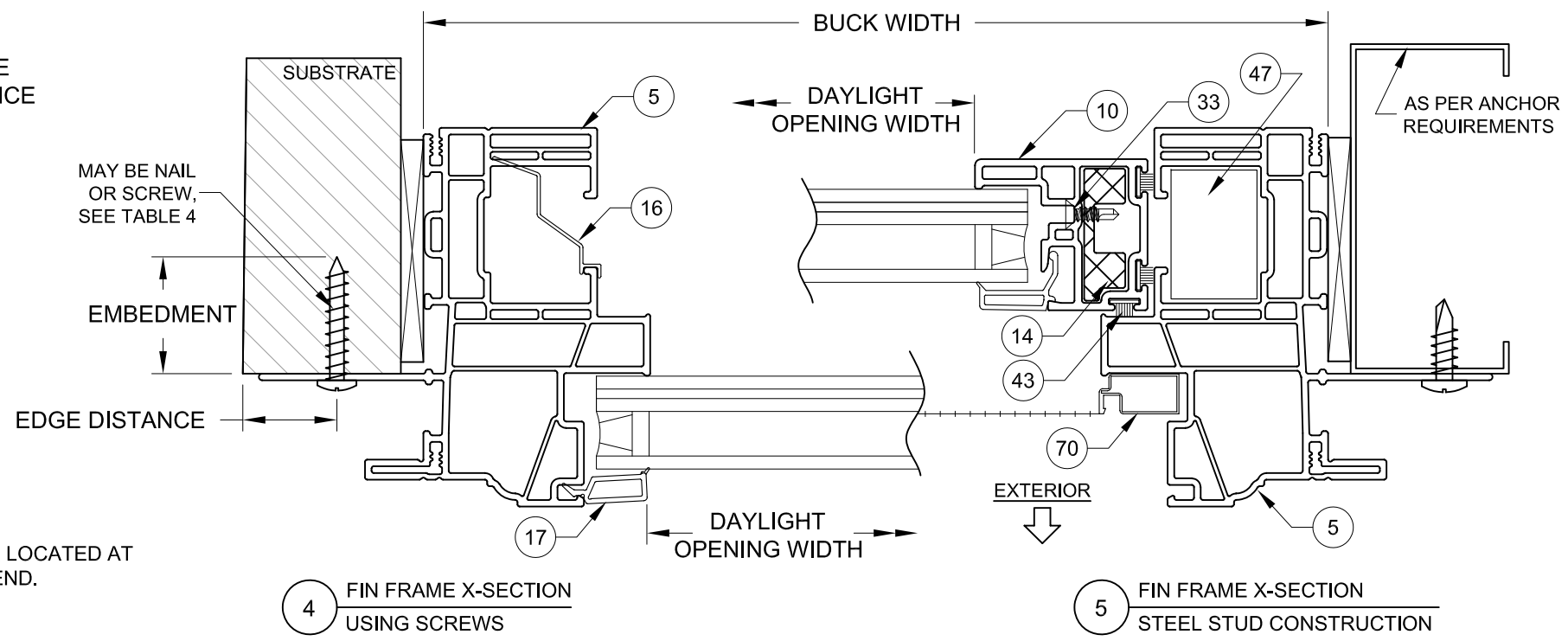
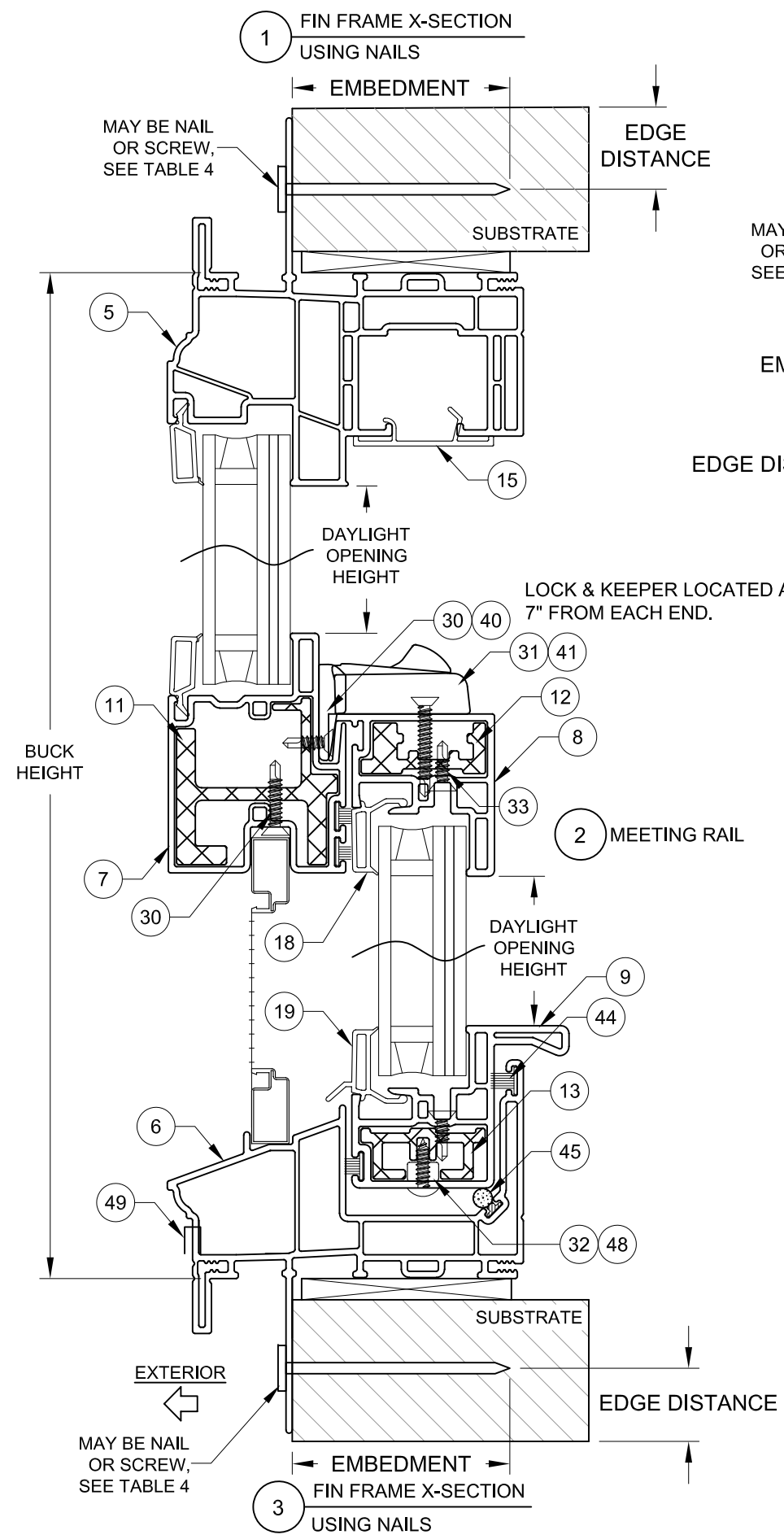


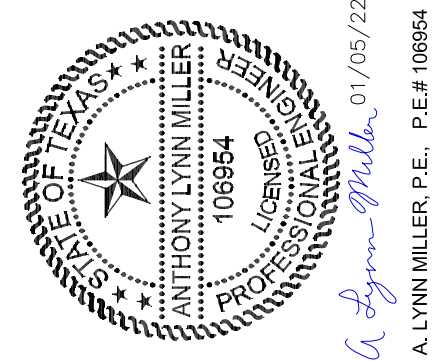
TABLE 4: INSTALLATION ANCHORS

Anchor	Substrate	Min. Edge Distance	Min. Embedment
2-1/2" x .113" Box Nail	P.T. Southern Pine (SG = .55)	5/16"	2-7/16"
2-1/2" x .131" Common Nail	P.T. Southern Pine (SG = .55)	3/8"	2-7/16"
2-1/2" x .145" Roofing Nail	P.T. Southern Pine (SG = .55)	3/8"	2-7/16"
#10 Steel SMS	P.T. Southern Pine (SG = .55)	1/2"	1-3/8"
	Aluminum, 6063-T5 min.	3/8"	1/8"
	Steel Stud, Gr. 33 min.	3/8"	0.036
	A36 Steel	3/8"	1/8"

1) ANCHOR MUST EXTEND A MINIMUM OF 3 THREADS BEYOND ANY METAL SUBSTRATE.
 2) ALL ANCHOR HEAD TYPES ARE APPLICABLE.

INSTALLATION NOTES:

- 1) SEE SHEET 1 FOR SPACING REQUIREMENTS.
- 2) GLASS SHOWN IS FOR ILLUSTRATIVE PURPOSES ONLY AND MAY DIFFER TO MEET DESIGN REQUIREMENTS.
- 3) FLANGE MAY BE REMOVED.
- 4) USE ONLY SUBSTRATE APPROPRIATE ANCHORS LISTED IN ANCHOR TABLE. FOLLOW EMBEDMENT AND EDGE DISTANCE LIMITS. ANY INSTALLATION OPTION SHOWN MAY BE USED ON ANY OR ALL SIDES OF THE WINDOW.
- 5) MAX. SHIM THICKNESS TO BE 1/4". MAX. SHIM SPACING TO BE 18".

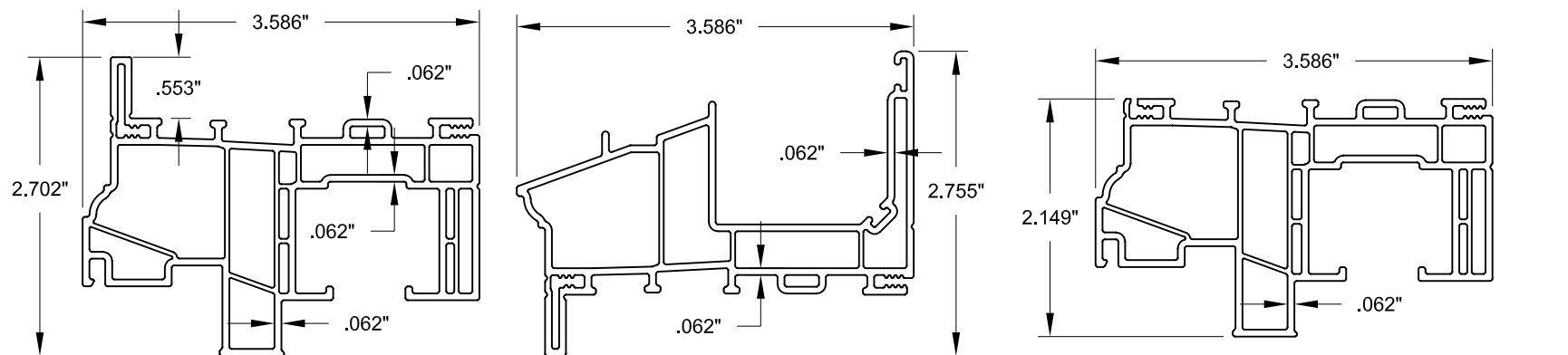


FIRM REG. NO.: F-23136
 COPYRIGHT © 2022
 NEWSOUTH WINDOW SOLUTIONS
 LIMITED LICENSE TO MAKE
 COPIES FOR PERMITTING

PREPARED BY: A. LYNN MILLER, P.E.
 1070 TECHNOLOGY DR
 N. VENICE, FL 34275
 (941)-480-1600

9450 SERIES SINGLE HUNG
 FIN INSTALLATION SECTION VIEWS
 NEWSOUTH WINDOW SOLUTIONS
 10741 CROSSROADS COMMERCE BLVD.
 TAMPA, FL 33610

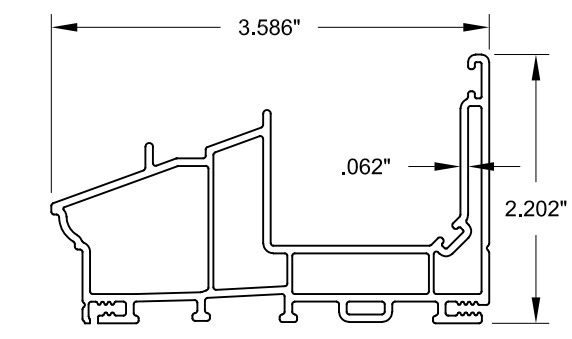
REVISION:	BY:			
DATE:				
#:				
DATE: 12/12/21				
SCALE: NTS				
BY: JENS ROSOWSKI				
DRAWING #: SH9450-TDI-01				
SHEET: 4 OF 6				



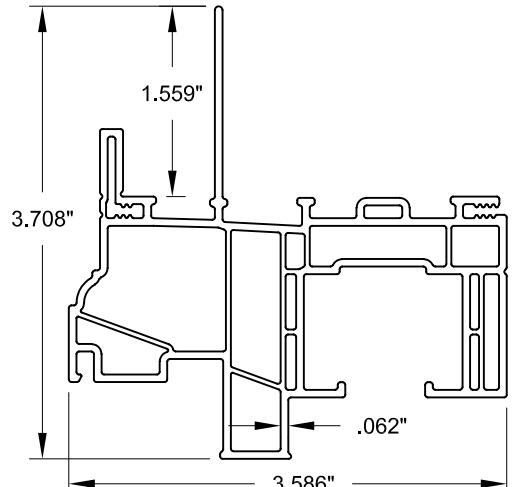
① HEAD & JAMB, W/FLANGE

② SILL, W/FLANGE

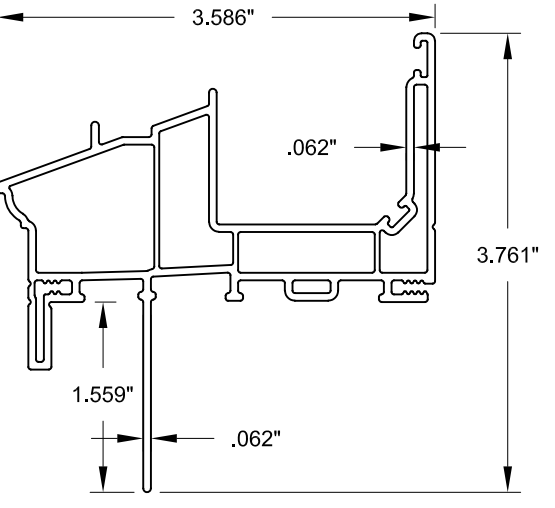
③ HEAD & JAMB, EQUAL LEG



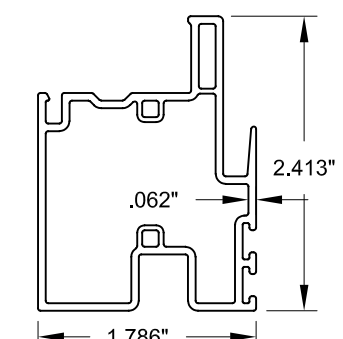
④ SILL, EQUAL LEG



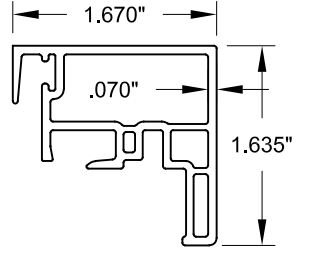
⑤ HEAD & JAMB, W/NAILING FIN



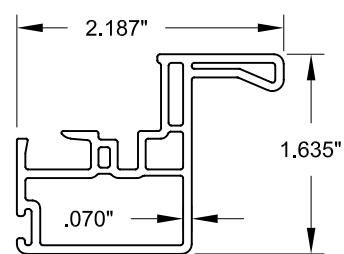
⑥ SILL, W/NAILING FIN



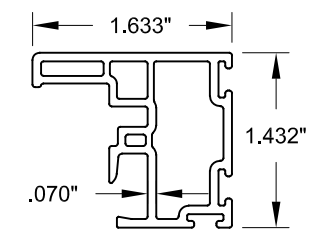
⑦ MEETING RAIL



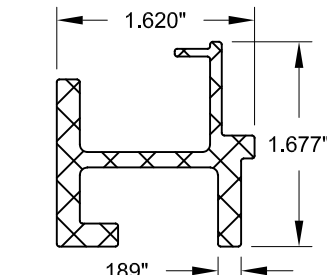
⑧ LOCK RAIL



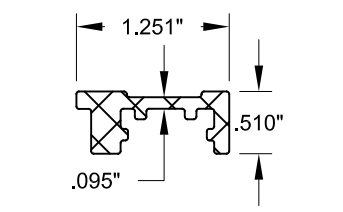
⑨ LIFT RAIL



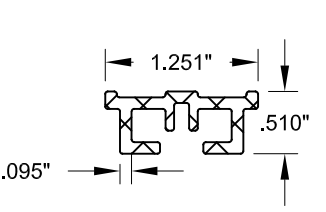
⑩ SASH STILE



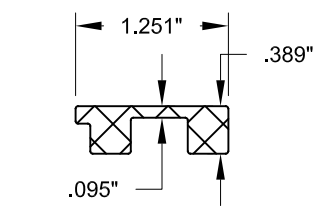
⑪ REINFORCEMENT (MEETING RAIL)



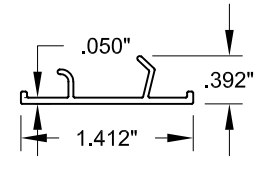
⑫ REINFORCEMENT (LOCK RAIL)



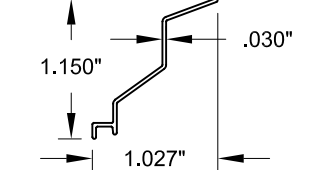
⑬ REINFORCEMENT (BOTTOM RAIL)



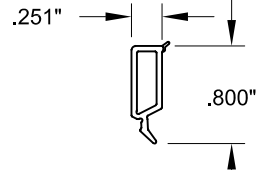
⑭ REINFORCEMENT (SASH STILE)



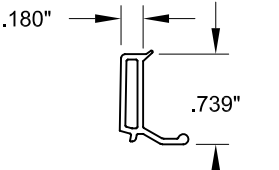
⑮ SASH STOP



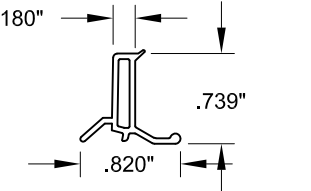
⑯ BALANCE COVER



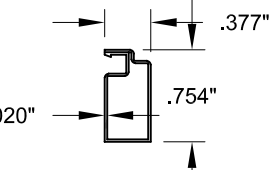
⑰ FIXED LITE GLAZING BEAD



⑱ SASH GLAZING BEAD



⑲ SASH GLAZING BEAD WITH DRIP EDGE (OPTIONAL)

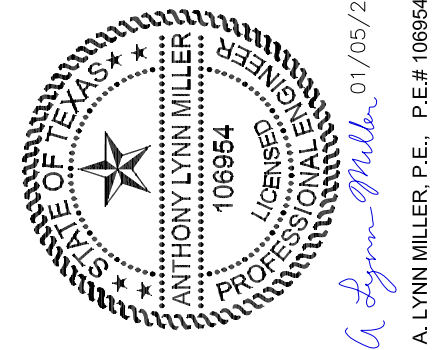


⑳ SCREEN FRAME

TABLE 5:

#	Part #	Description	Material
1	9465	Head & Jamb, w/Flange	PVC
2	9469	Sill, w/Flange	PVC
3	9465	Head & Jamb, Equal Leg	PVC
4	9469	Sill, Equal Leg	PVC
5	9455	Head & Jamb, w/Nailing Fin	PVC
6	9459	Sill, w/Nailing Fin	PVC
7	9477	Meeting Rail	PVC
8	9485	Lock Rail	PVC
9	9476	Sash Lift Rail	PVC
10	9438	Sash Stiles	PVC
11	6166	Reinf. - Meeting Rail	6063-T5
12	6165	Reinf. - Lock Rail	6063-T5
13	6163	Reinf. - Lift Rail	6063-T5
14	6164	Reinf. - Stiles	6063-T5
15	9473	Sash Stop	PVC
16	9468	Balancer Cover	PVC
17	9736	Fixed Lite Glazing Bead	PVC
18	9425	Sash Glazing Bead	PVC
19	9467	Sash Glazing Bead w/Drip Edge	PVC
30	1012	Screw, #6 x 3/4" PFH	Steel
31	1007	Screw, #6 x 1-1/8" PFH	Steel
32	1015	Screw, #8 x 1/2" PTRUSS	Steel
33	1003	Screw, #6 x 1/2" PFH	Steel
40	8096	Keeper	Zinc
41	8106	AutoLock	Zinc
42	8121	MR Backing Plate	SS
43	4006	WSTP, .270" x .220" Polyfin	
44	4008	WSTP, .270" x .320" Polyfin	
45	4012	WSTP, Bulb Vinyl, .187" x .300"	Steel
46	8205/8206	Tilt Latch, L&R	Zinc
47		Balance	
48	8148	Pivot Bar	SS
49	8223	Weep Cover	Nylon
60		RGS 7700, Pecora 895, SikaFlex 552, Dow 791, 983 or 995	
61		Metal-Reinforced Butyl Spacer	Composite
62	7061	Setting Block, 1/8" x 7/8" x 2"	EPDM
70	6244	Screen Frame	Aluminum

THE APPROVED WHITE, RIGID PVC EXTERIOR EXTRUSIONS FOR DOORS ARE TO BE PRODUCED BY EXTRUDERS' LICENSEES UNDER "AAMA CERTIFICATION PROGRAMS FOR RIGID PVC EXTRUSIONS".



FIRM REG. NO.: F-23136

COPYRIGHT © 2022
NEWSOUTH WINDOW SOLUTIONS
LIMITED LICENSE TO MAKE
COPIES FOR PERMITTING

PREPARED BY: A. LYNN MILLER, P.E.
1070 TECHNOLOGY DR
N. VENICE, FL 34275
(941)-480-1600

9450 SERIES SINGLE HUNG
EXTRUSIONS & BOM
NEWSOUTH WINDOW SOLUTIONS
10741 CROSSROADS COMMERCE BLVD.
TAMPA, FL 33610

REVISION:	DATE:	#:	BY:

DATE: 12/12/21
SCALE: NTS
BY: JENS ROSOWSKI
DRAWING #: SH9450-TDI-01
SHEET: 5 OF 6

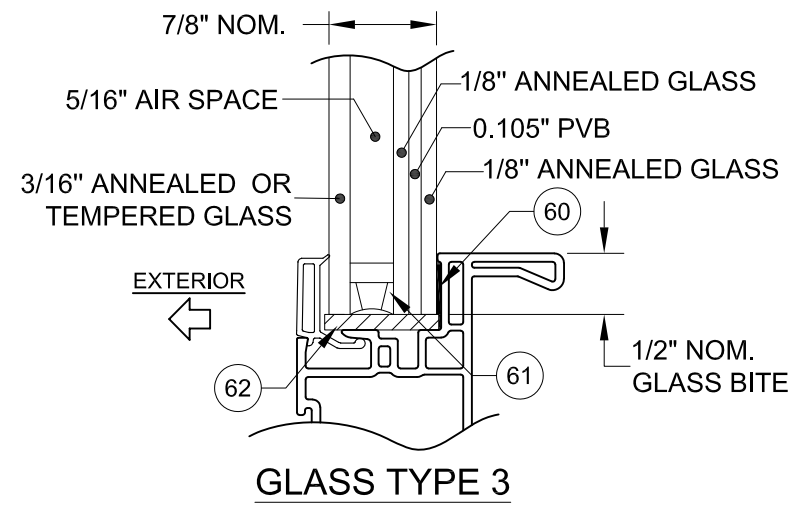
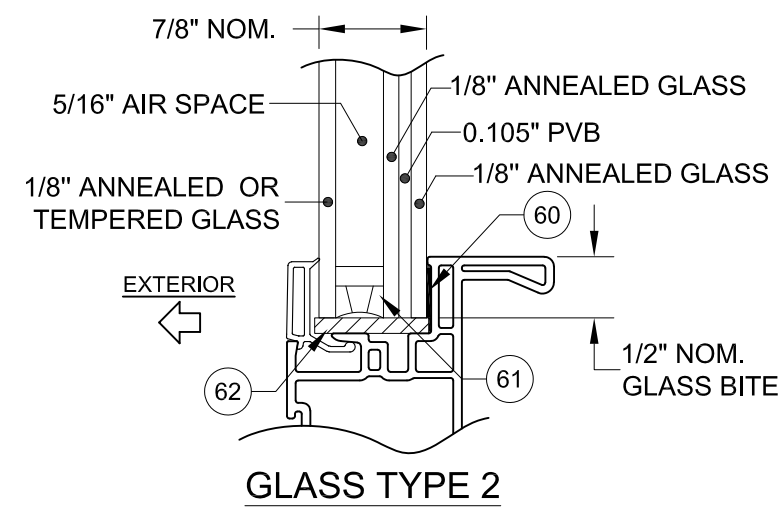
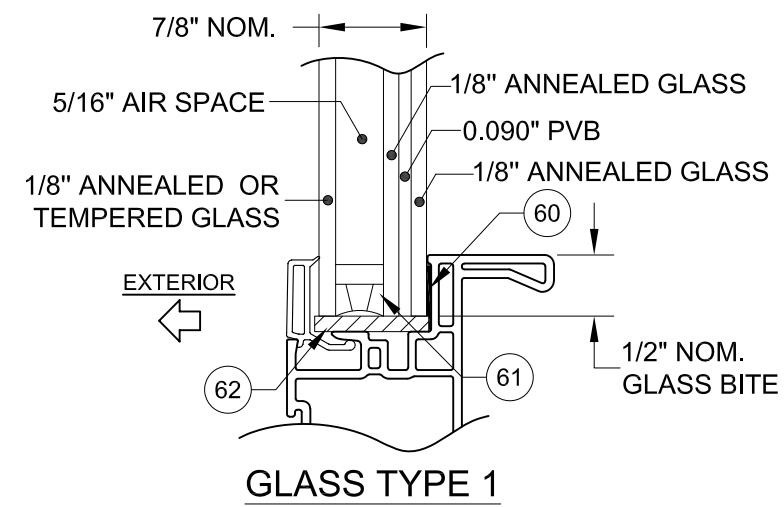
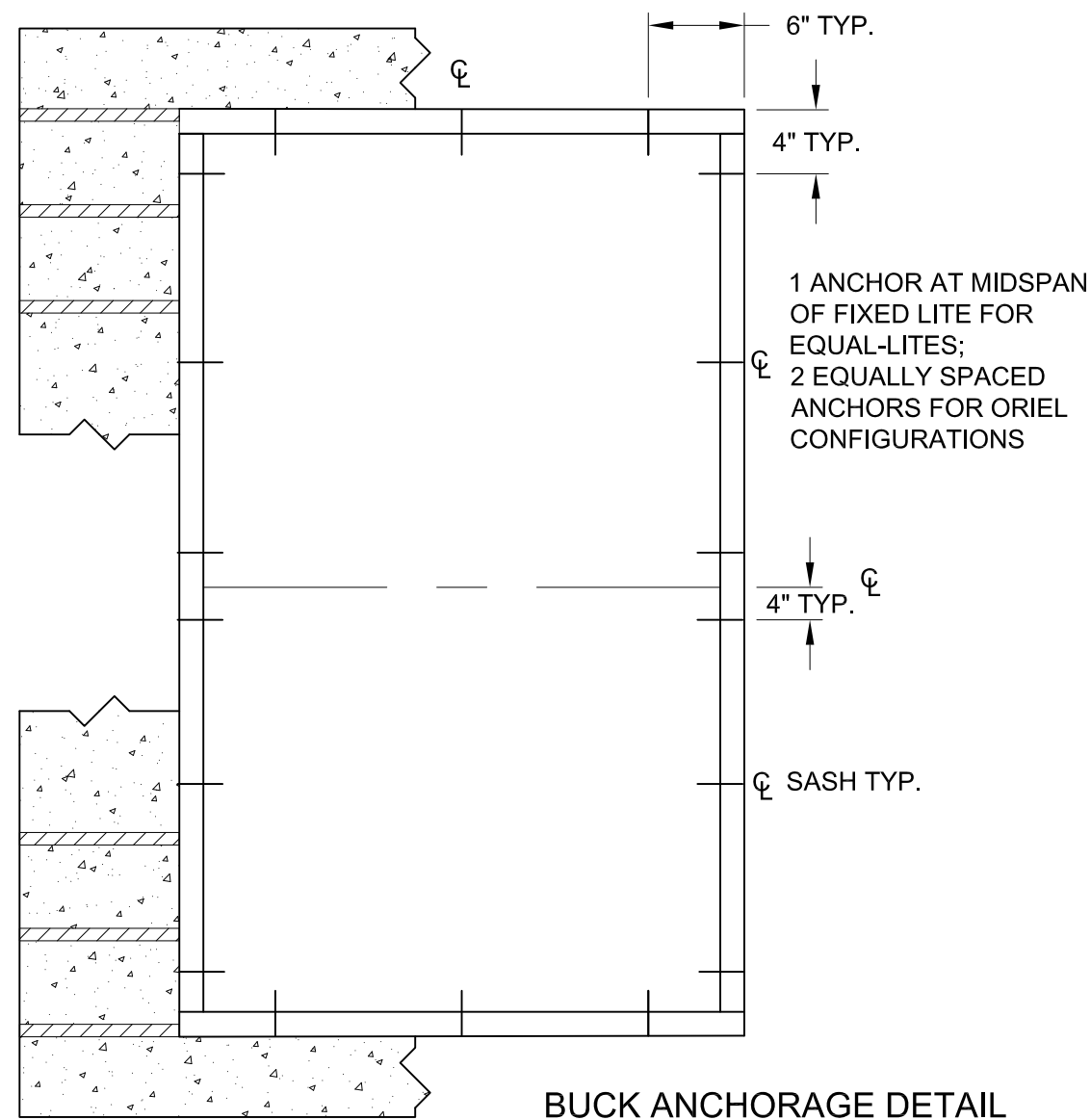
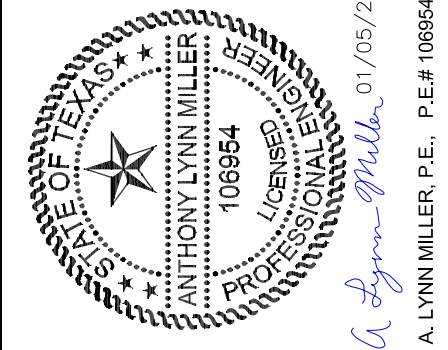


TABLE 6:

Anchor	Substrate	Minimum Edge Distance	Minimum Embedment
1/4" Steel Ultracon or Ultracon+	Concrete (min. 3.0 ksi)	1"	1-3/8"
	UngROUTED CMU, (ASTM C-90)	1"	1-1/4"

- 1) "UNGROUTED CMU" VALUES MAY BE USED FOR GROUDED CMU APPLICATIONS.
- 2) ALL ANCHOR HEAD TYPES ARE APPLICABLE.
- 3) MASONRY ANCHOR LOCATIONS AT THE CORNERS MAY BE ADJUSTED TO MAINTAIN THE MINIMUM EDGE DISTANCE TO MORTOR JOINTS.
- 4) MASONRY ANCHOR LOCATIONS NOTED AS "MAX. ON CENTER" MUST BE ADJUSTED TO MAINTAIN THE MINIMUM EDGE DISTANCE TO MORTOR JOINTS, ADDITIONAL MASONRY ANCHORS MAY BE REQUIRED TO ENSURE THE "MAX. ON CENTER" DIMENSION IS NOT EXCEEDED.



FIRM REG. NO.: F-23136
COPYRIGHT © 2022
NEWSOUTH WINDOW SOLUTIONS
LIMITED LICENSE TO MAKE
COPIES FOR PERMITTING

PREPARED BY: A. LYNN MILLER, P.E.
1070 TECHNOLOGY DR
N. VENICE, FL 34275
(941)-480-1600

9450 SERIES SINGLE HUNG
GLAZING DETAILS AND
BUCK INSTALLATION DETAILS
NEWSOUTH WINDOW SOLUTIONS
10741 CROSSROADS COMMERCE BLVD.
TAMPA, FL 33610

BY:	
REVISION:	
DATE:	
#:	
DATE:	12/12/21
SCALE:	NTS
BY:	JENS ROSOWSKI
DRAWING #:	SH9450-TDI-01
SHEET:	6 OF 6