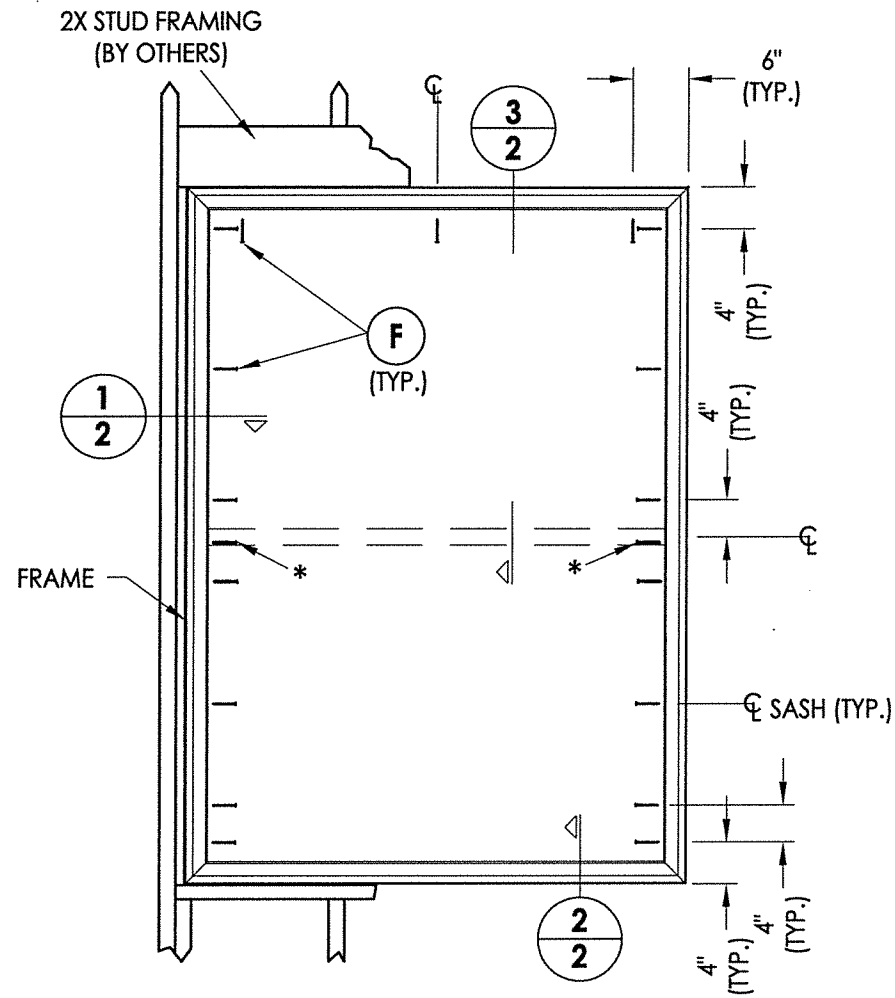


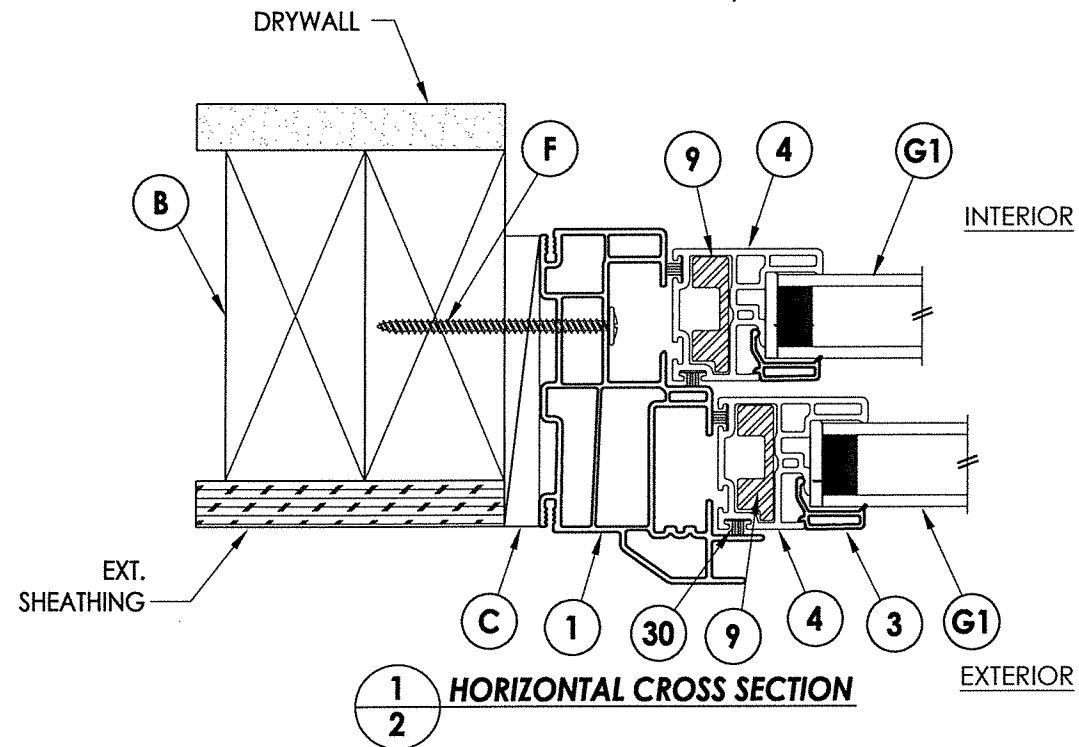
R:\Clients\New South Windows PERMANENT\B - Texas Dept of Ins\TDI - XXX 8400 DH\Drawings\TX-5034.dwg .2



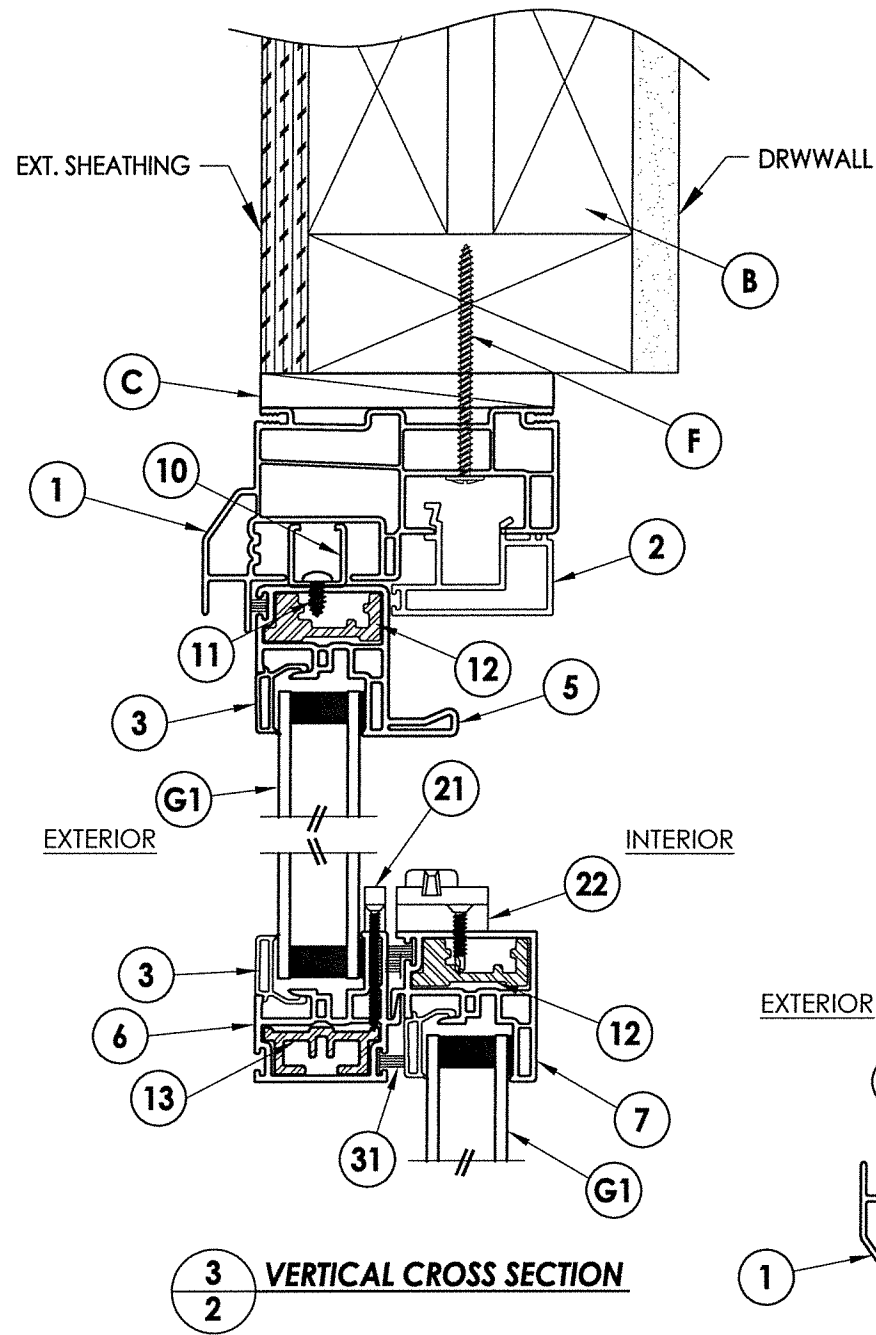
FRAME ANCHORING

NOTE:
1. LOCK AND KEEPER LOCATED 7" FROM EACH END OF LOCK/MEETING RAIL.

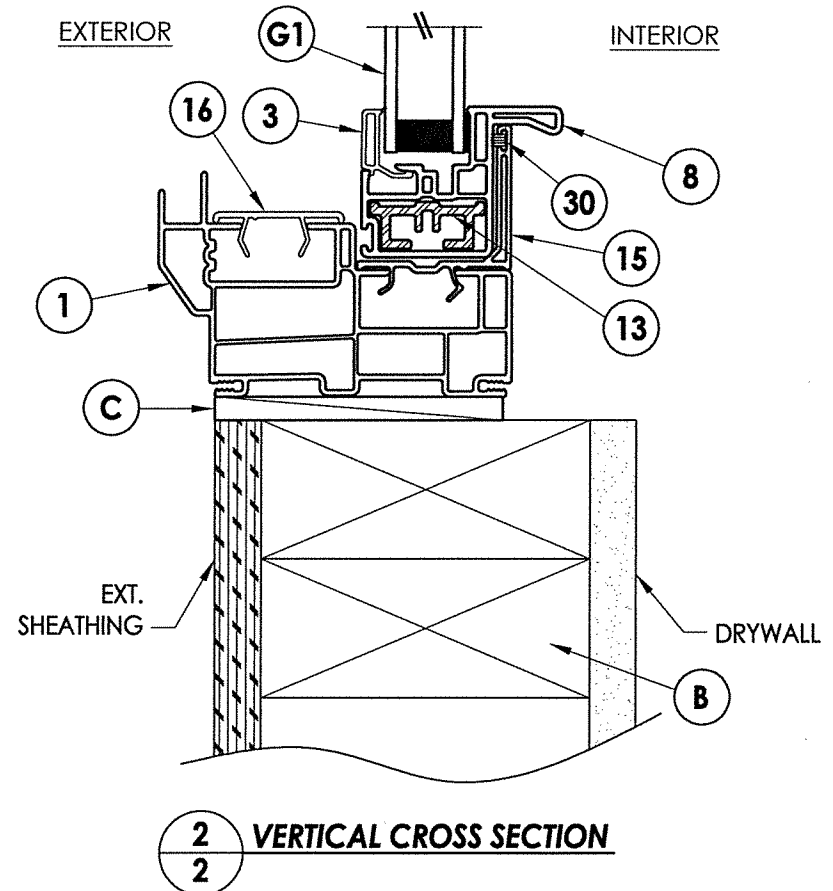
* ANCHOR THRU TILT LATCH INTO WOOD SUBSTRATE USING A SIMILAR FLAT HEAD ANCHOR (1-3/8" MIN. EMBEDMENT)



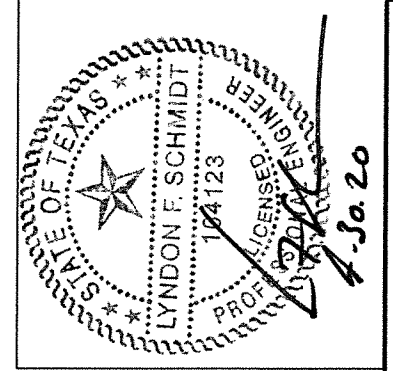
1 HORIZONTAL CROSS SECTION



3 VERTICAL CROSS SECTION



2 VERTICAL CROSS SECTION



Documents Prepared By: Lyndon F. Schmidt, P.E.
TEXAS P.E. #104123

RW BUILDING CONSULTANTS, INC.
P.O. Box 230 Valrico FL, 33595
Phone No.: 813.659.9197
TEXAS BOARD OF PROFESSIONAL ENGINEERS
CERTIFICATE OF REGISTRATION # F-11852

PRODUCT: DOUBLE HUNG WINDOW
PART OR ASSEMBLY: VERTICAL & HORIZONTAL CROSS SECTIONS & FRAME ANCHORING

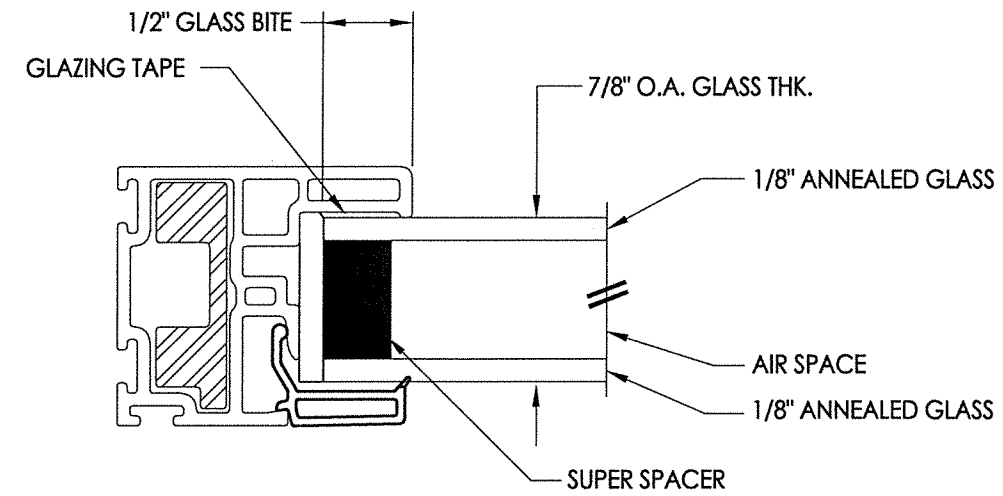
NO.	DATE	BY	REVISIONS

DATE: 4/30/20
SCALE: N.T.S.
DWG. BY: RW
CHK. BY: LFS
DRAWING NO.: TX-5034
SHEET 2 OF 4

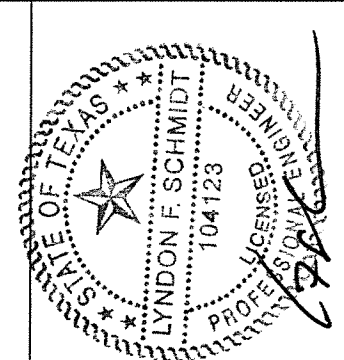
© 2020 R.W. BUILDING CONSULTANTS INC.

BILL OF MATERIALS		
ITEM #	DESCRIPTION	MATERIAL
B	2X FRAMING (SG >= 0.42)	WOOD
C	3/8 MAX. SHIM SPACE @ HEAD & JAMBS, 1/4" @ SILL	STEEL
F	#8 X 2-1/2" MODIFIED TRUSS HEAD SCREW (7/16" Ø HEAD) (1-3/8" MIN. EMBEDMENT)	STEEL
1	FRAME*	PVC
2	HEAD ADAPTER*	PVC
3	GLAZING BEAD*	PVC
4	STILE *	PVC
5	PULL RAIL (TOP SASH)*	PVC
6	KEEPER RAIL (TOP SASH)*	PVC
7	LOCK RAIL (BOTTOM SASH)*	PVC
8	LIFT RAIL (BOTTOM SASH)*	PVC
9	REINFORCEMENT (6065-T5 ALUM)	ALUM
10	INTERLOCK CLIP	STEEL
11	#6 X 1/2" PPH SMS	STEEL
12	REINFORCEMENT (6065-T5 ALUM)	ALUM
13	REINFORCEMENT (6065-T5 ALUM)	ALUM
15	SILL ADAPTER*	PVC
16	SILL CAP*	PVC
21	KEEPER - TRUTH #C41275	-
22	LOCK ASSEMBLY - TRUTH #A30700401	-
30	CENTER FIN PILE (0.187" X 0.190")	-
31	CENTER FIN PILE (0.270" X 0.220")	-

* THE APPROVED WHITE RIGID PVC EXTERIOR EXTRUSIONS FOR WINDOWS ARE TO BE PRODUCED BY EXTRUDERS LICENSEES IN "CERTIFICATION PROGRAMS FOR RIGID PVC EXTRUSIONS".



G1 GLAZING DETAIL



4.30.20

Documents Prepared By: Lyndon F. Schmidt, P.E. TEXAS P.E. #104123

RW BUILDING CONSULTANTS, INC.
P.O. Box 230 Valrico FL 33595
Phone No.: 813.659.9197

TEXAS BOARD OF PROFESSIONAL ENGINEERS
CERTIFICATE OF REGISTRATION # F-11852

PRODUCT:	DOUBLE HUNG WINDOW
PART OR ASSEMBLY:	BILL OF MATERIALS AND GLAZING DETAILS

NO.	DATE	BY	REVISIONS

DATE:	4/30/20
SCALE:	N.T.S.
DWG. BY:	RW
CHK. BY:	LFS
DRAWING NO.:	TX-5034
SHEET	4 OF 4