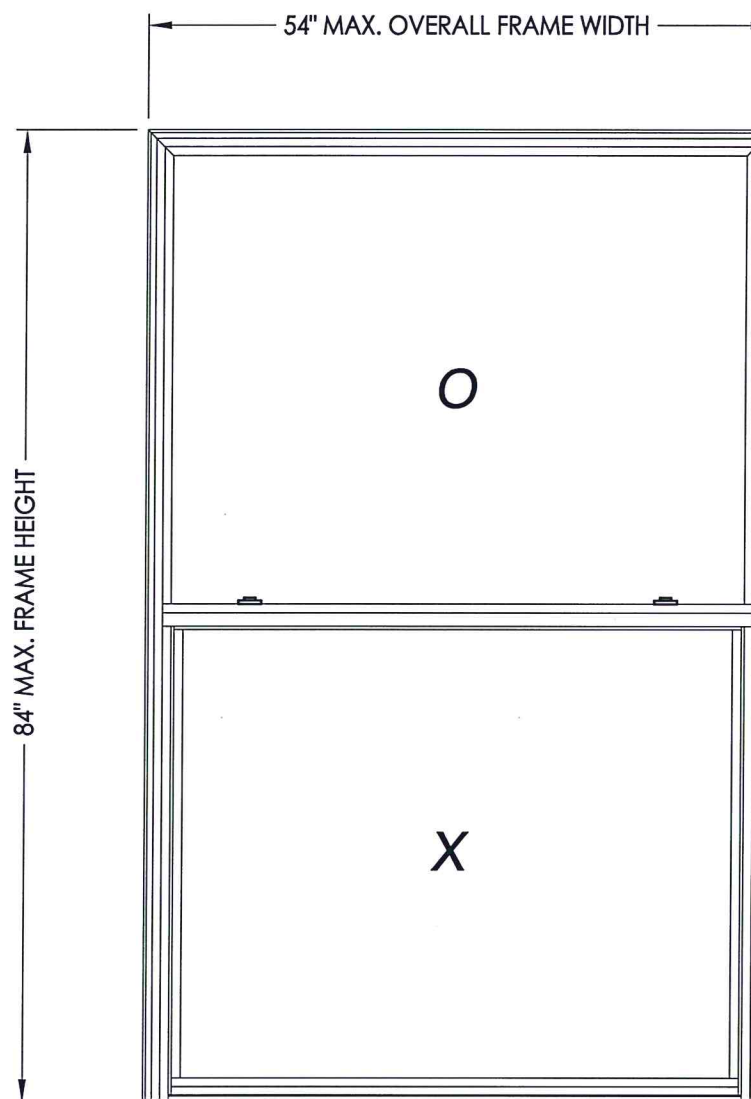


**COASTAL
PERFORMANCE™**
by Sunrise Windows, LTD.

Coastal Performance Single Hung Window "NON-IMPACT"



EVALUATED FOR USE IN THE STATE OF TEXAS

The Single Hung Window described herein complies with the 2018 International Residential Code (IRC), Sections R301 & R609 and the 2018 International Building Code (IBC), Sections 1404.13, 1609, 1709.5, 2403 and 2404 subject to the following conditions:

1. Anchors shall be as listed and spaced as shown in the details. Anchor embedment to base material shall be beyond roof covering.
2. When used in areas requiring wind-borne debris protection this product is required to be protected with an impact resistant covering that complies with Section R301.2.1.2 of the IRC and Section 1609.2 of the IBC.
3. Allowable design pressure requirements must be equal to or less than the design pressure rating shown in the design pressure chart, sheet 1 of this drawing.
4. Conditions not covered by this drawing are subject to further engineering analysis.

TABLE OF CONTENTS	
SHEET #	DESCRIPTION
1	Typical Elevations, Design Pressures & General Notes
2	Frame Anchoring & Cross Sections
3	Components
4	Bill of Materials & Glazing Details

MAX. OVERALL FRAME DIMENSION	MAX DAY LITE DIMENSION (OPERABLE)	MAX DAY LITE DIMENSION (FIXED)	GLASS TYPE	DESIGN PRESSURE (PSF)	
				POS.	NEG.
54.0" X 84.0"	47.5" X 38.75"	49.5" X 38.69"	G1	+50.0	-50.0



Documents Prepared By: Lyndon F. Schmidt, P.E.
TEXAS P.E. #104123

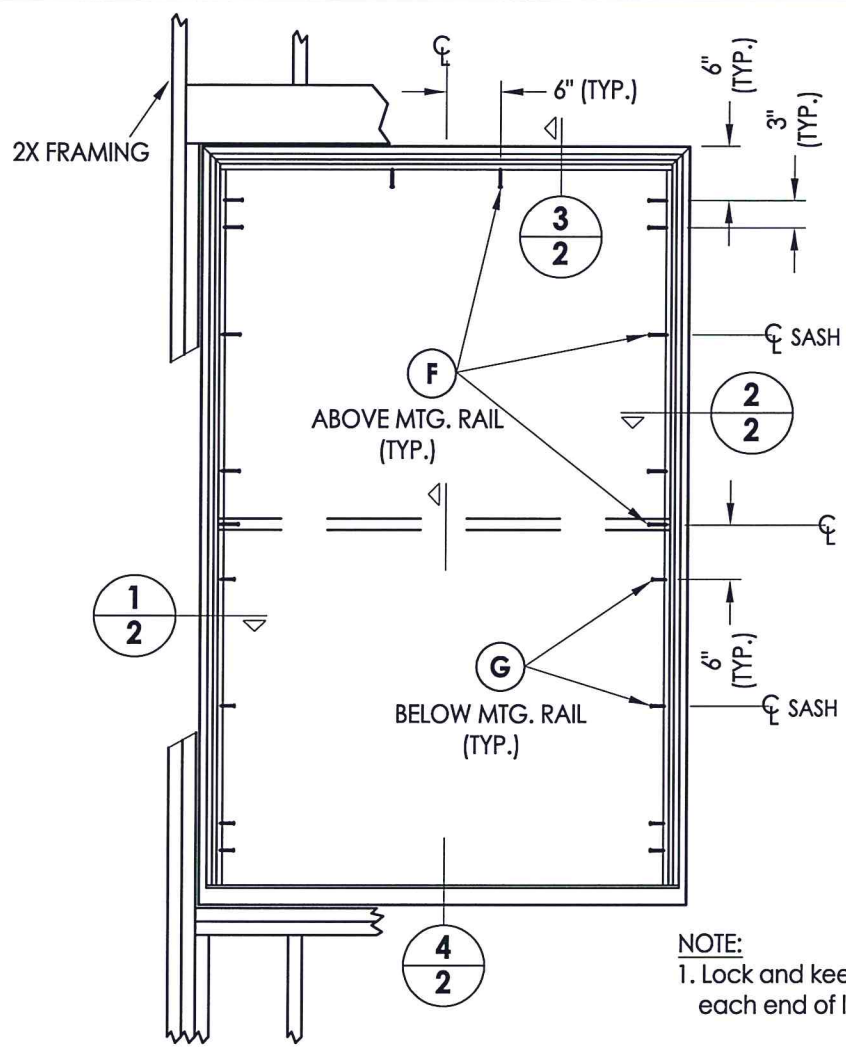
RW BUILDING CONSULTANTS, INC.
P.O. Box 230 Valrico FL 33595
Phone No.: 813.659.9197
TEXAS BOARD OF PROFESSIONAL ENGINEERS
CERTIFICATE OF REGISTRATION # F-11852

PRODUCT: SUNRISE WINDOWS
PART OR ASSEMBLY: TYPICAL ELEVATION, DESIGN PRESSURES & GENERAL NOTES

NO.	DATE	BY	REVISIONS

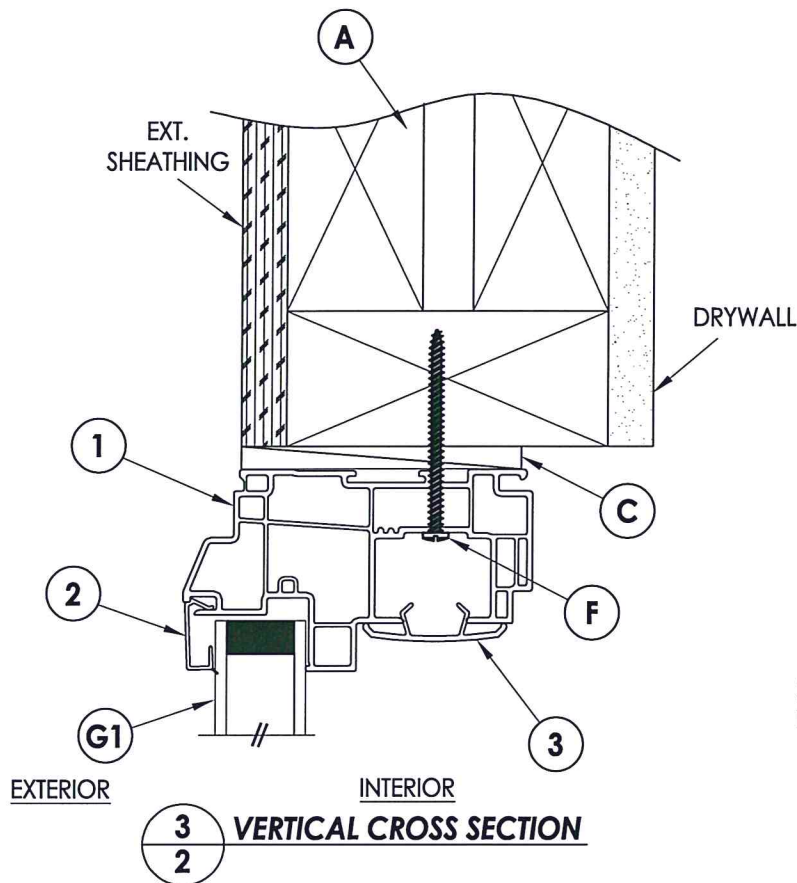
DATE: 11/27/19
SCALE: N.T.S.
DWG. BY: TRJ
CHK. BY: LFS
DRAWING NO.: TX-4956
SHEET 1 OF 4

R:\Clients\Sunrise Windows\B - Texas Dept of Ins\TDI - XXX CP Single Hung Window\C - Drawings\TX-4956.dwg, 2.2

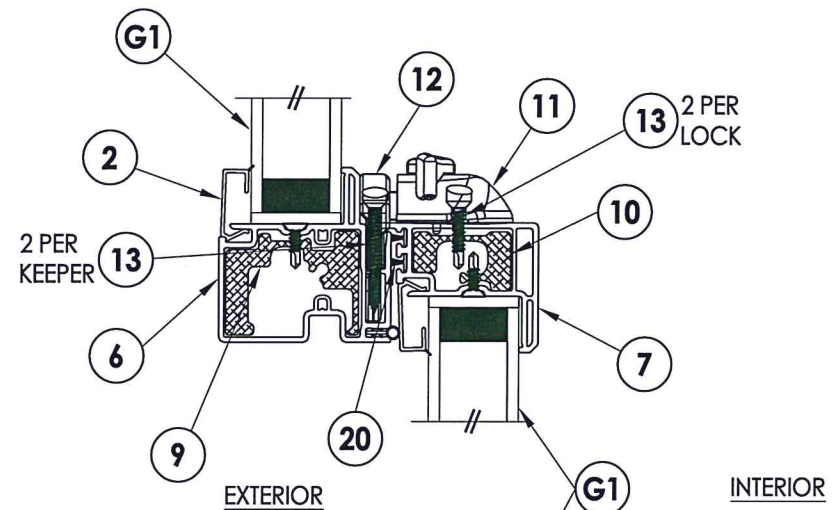


FRAME ANCHORING

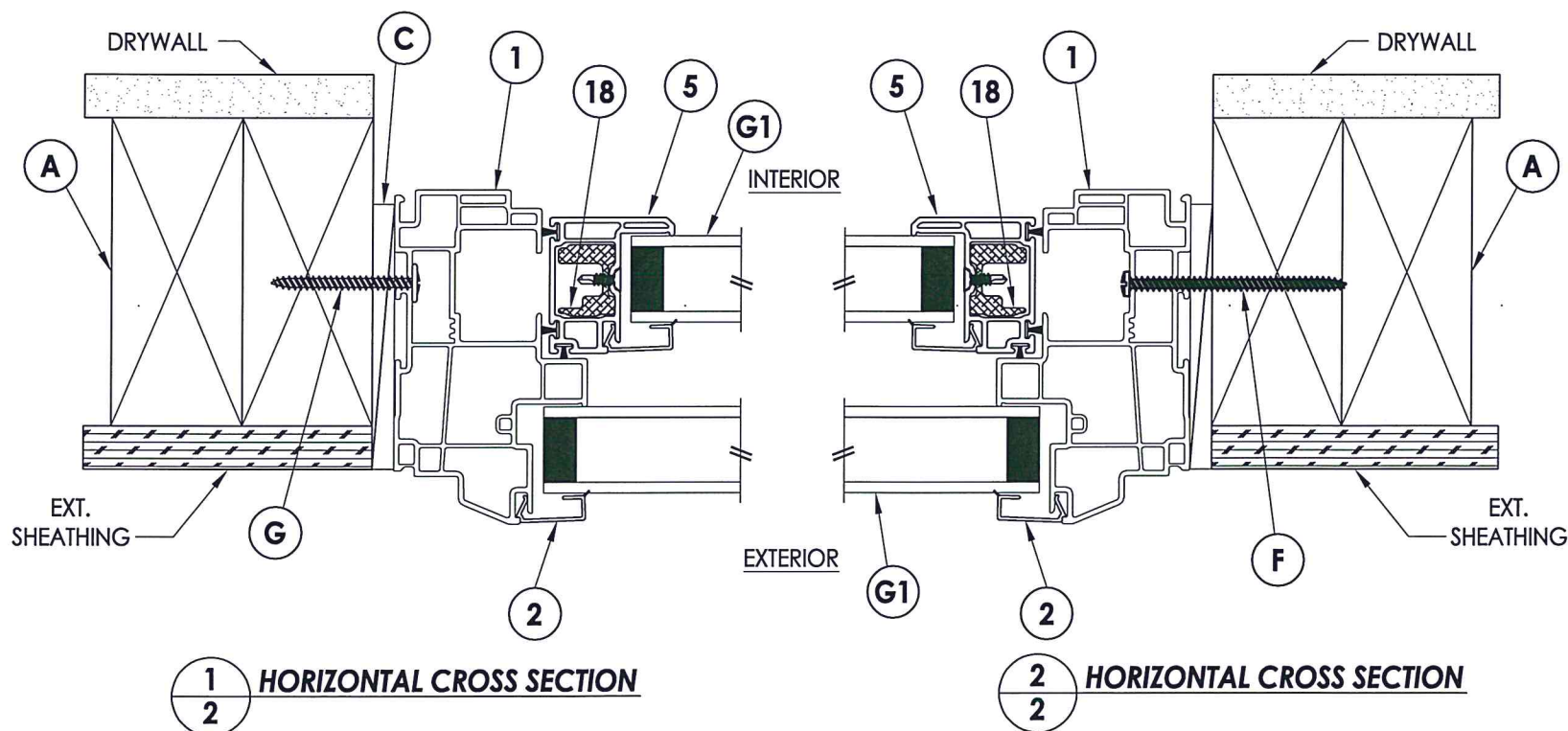
NOTE:
1. Lock and keeper located 7" from each end of lock/meeting stile.



3/2 VERTICAL CROSS SECTION

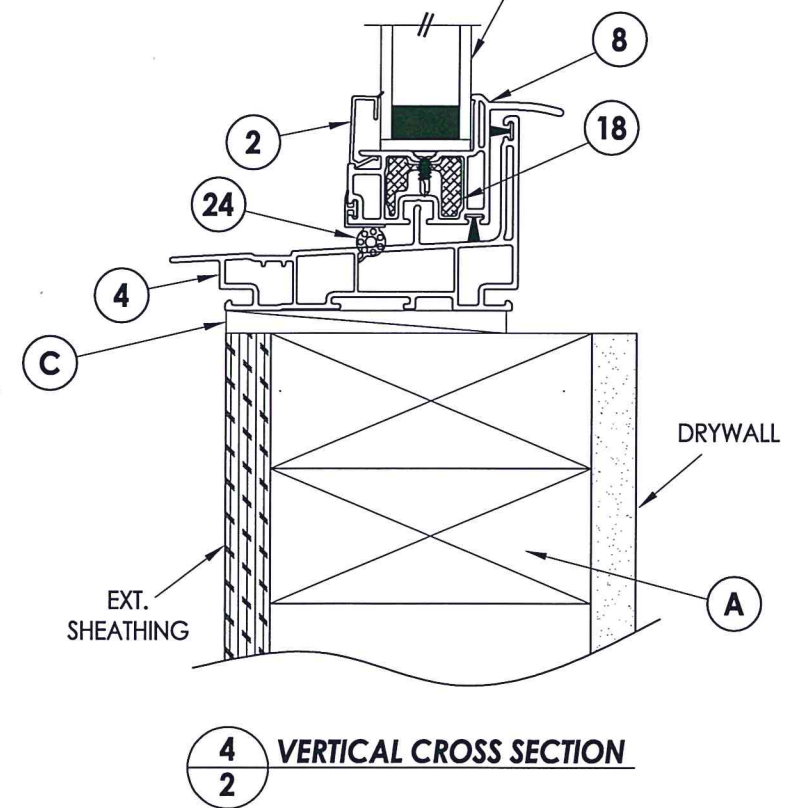


2 PER LOCKER VERTICAL CROSS SECTION

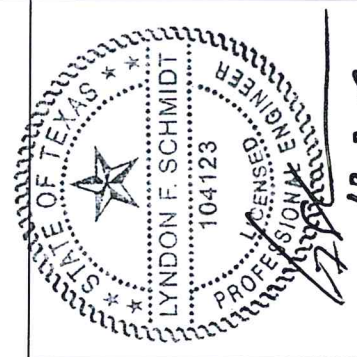


1/2 HORIZONTAL CROSS SECTION

2/2 HORIZONTAL CROSS SECTION



4/2 VERTICAL CROSS SECTION



Documents Prepared By: Lyndon F. Schmidt, P.E.
TEXAS P.E. #104123

RW
BUILDING CONSULTANTS, INC.
P.O. Box 230 Valrico FL, 33595
Phone No.: 813.659.9197
TEXAS BOARD OF PROFESSIONAL ENGINEERS
CERTIFICATE OF REGISTRATION # F-11852

PRODUCT: SUNRISE WINDOWS

PART OR ASSEMBLY: FRAME ANCHORING & CROSS SECTIONS

NO.	DATE	BY

DATE: 11/27/19

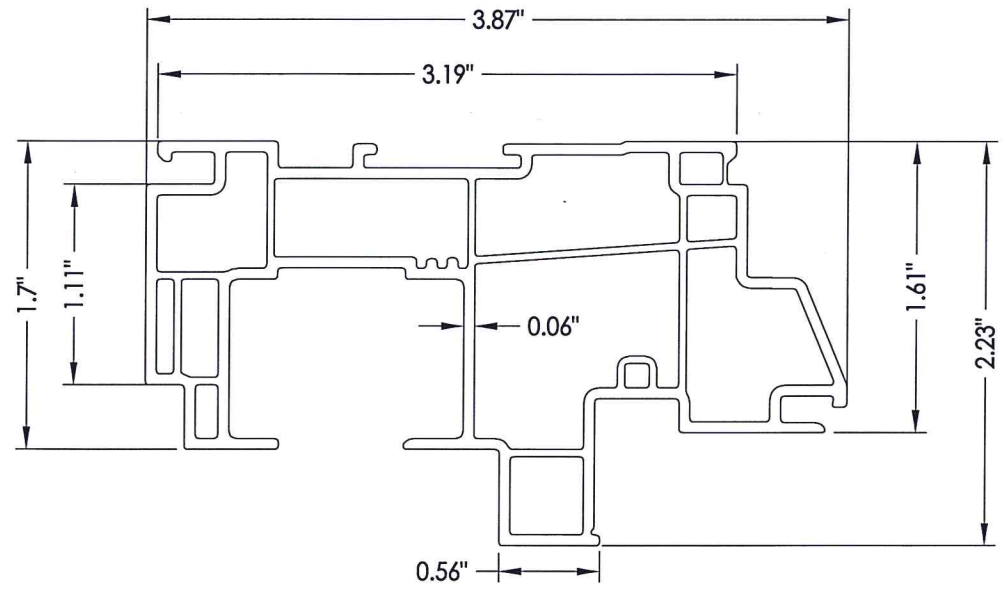
SCALE: N.T.S.

DWG. BY: TRJ

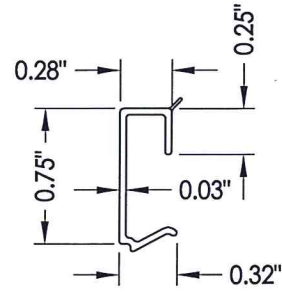
CHK. BY: LFS

DRAWING NO.: TX-4956

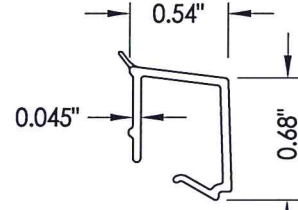
SHEET 2 OF 4



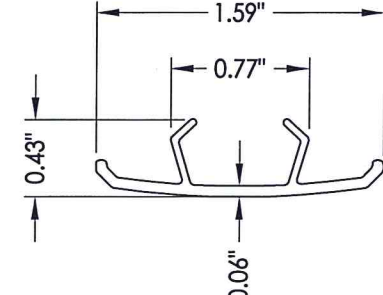
1 FRAME



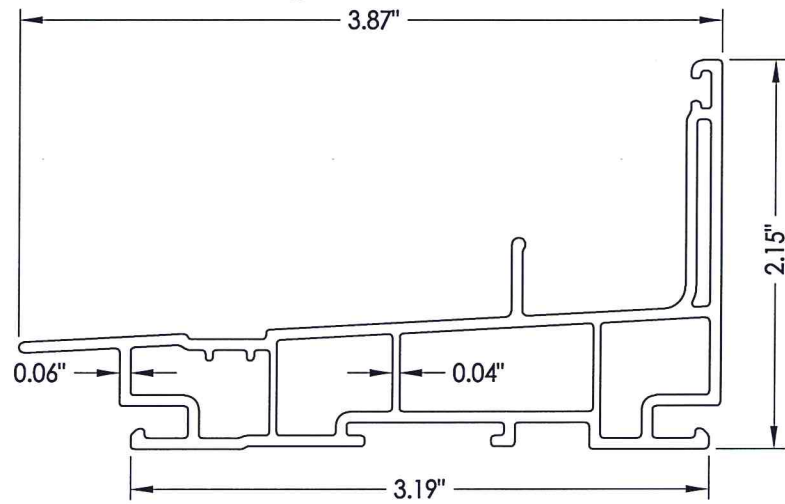
2 GLAZING BEAD



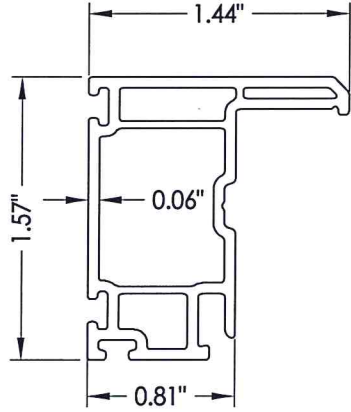
2A GLAZING BEAD



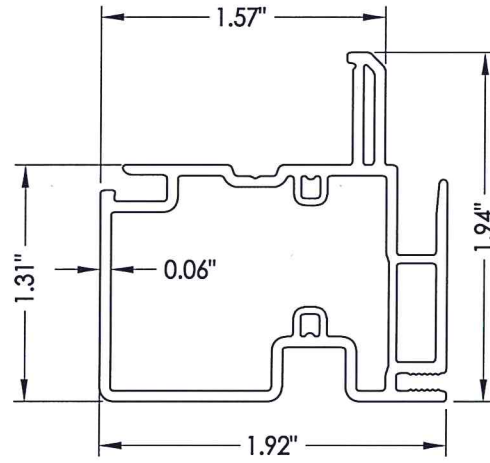
3 HEAD ADAPTER



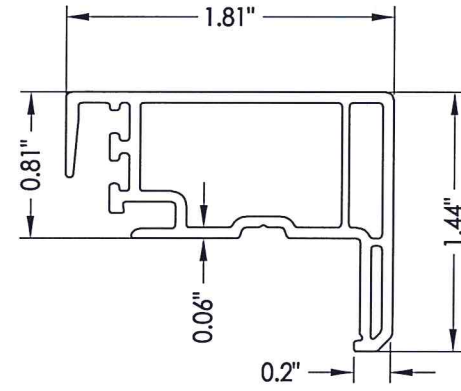
4 SILL



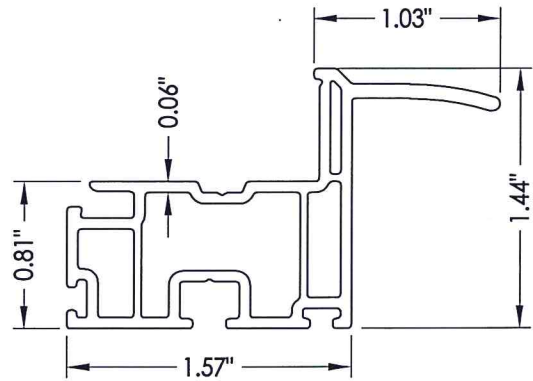
5 STILE



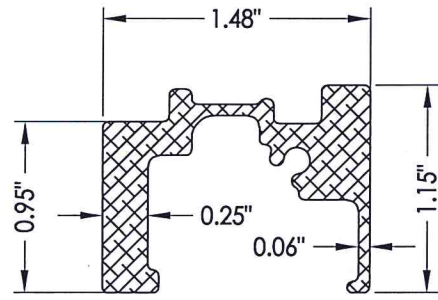
6 MEETING RAIL



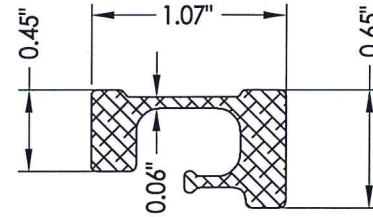
7 LOCK RAIL



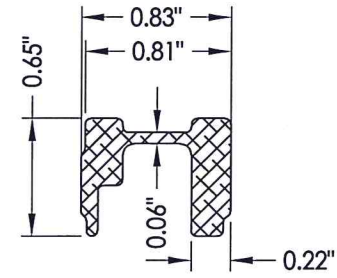
8 BOTTOM RAIL



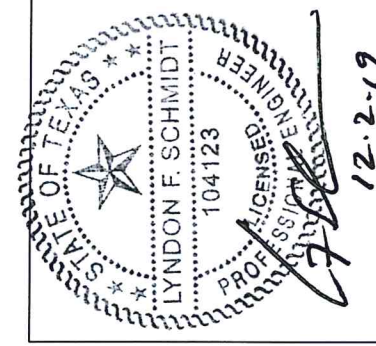
9 MEETING RAIL REINFORCEMENT



10 LOCK RAIL REINFORCEMENT



18 STILE/BOTTOM RAIL REINFORCEMENT



Documents Prepared By: Lyndon F. Schmidt, P.E.
TEXAS P.E. #104123

RW BUILDING CONSULTANTS, INC.
P.O. Box 230 Valrico FL 33595
Phone No.: 813.659.9197

TEXAS BOARD OF PROFESSIONAL ENGINEERS
CERTIFICATE OF REGISTRATION # F-11852

PRODUCT: SUNRISE WINDOWS

PART OR ASSEMBLY:

COMPONENTS

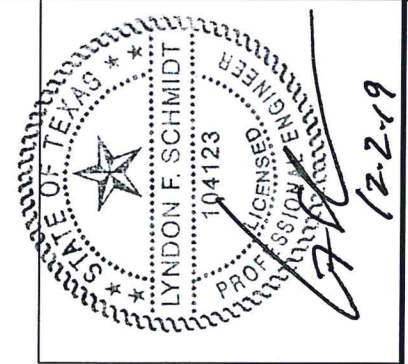
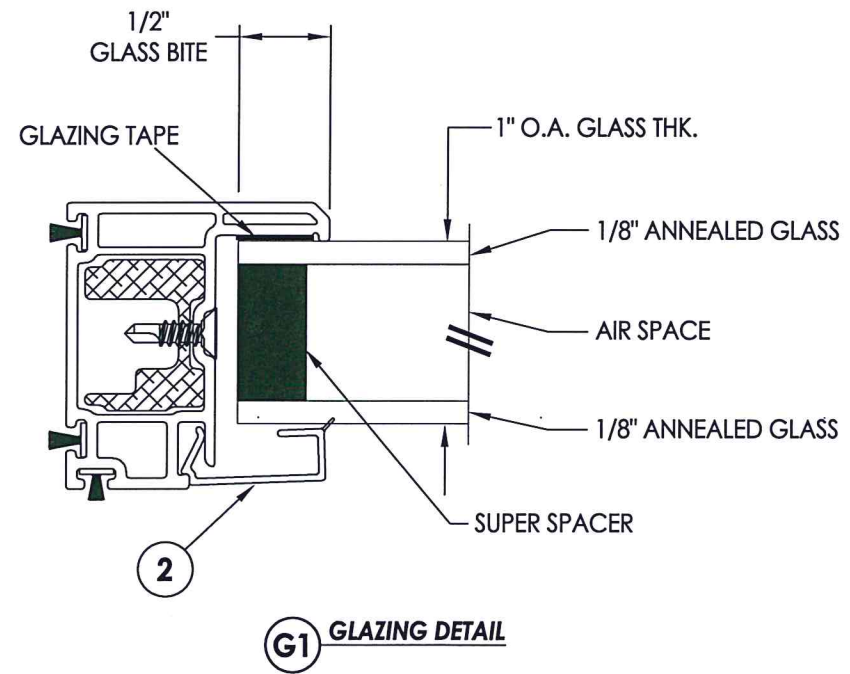
NO.	DATE	BY

DATE: 11/27/19
SCALE: N.T.S.
DWG. BY: TRJ
CHK. BY: LFS
DRAWING NO.: TX-4956
SHEET 3 OF 4

BILL OF MATERIALS

ITEM #	DESCRIPTION	MATERIAL
A	2X FRAMING (SG >= 0.42)	WOOD
C	1/4" MAX. SHIM SPACE	-
F	#8 X 2-1/2" PPH SMS (1-1/2" MIN. EMBEDMENT)	STEEL
G	#8 X 1-5/8" MODIFIED TRUSS HEAD (7/16" Ø) SMS (1-1/8" MIN. EMBEDMENT)	STEEL
1	FRAME (1833)*	RIGID PVC
2	GLAZING BEAD (836B)*	RIGID PVC
2A	GLAZING BEAD (1866A)*	RIGID PVC
3	HEAD ADAPTER (1863)*	RIGID PVC
4	SILL (1832)*	RIGID PVC
5	STILE (1808)*	RIGID PVC
6	MEETING RAIL (1837)*	RIGID PVC
7	LOCK RAIL (1806)*	RIGID PVC
8	BOTTOM RAIL (1805)*	RIGID PVC
9	MEETING RAIL REINFORCEMENT	6063 - T5 ALUM
10	LOCK RAIL REINFORCEMENT	6063 - T5 ALUM
11	SASH LOCK	-
12	KEEPER	-
13	#6 X 1" PFH	STEEL
18	STILE/BOTTOM RAIL REINFORCEMENT	6063 - T5 ALUM
20	WEATHERSTRIP	FOAM
24	BULB GASKET	FOAM
25	TILT LATCH	PVC
26	#8 X 7/8" PFH SMS	STEEL

* THE APPROVED WHITE RIGID PVC EXTERIOR EXTRUSIONS FOR WINDOWS ARE TO BE PRODUCED BY EXTRUDERS LICENSEES IN "AAMA CERTIFICATION PROGRAMS FOR RIGID PVC EXTRUSIONS".



Documents Prepared By: Lyndon F. Schmidt, P.E.
TEXAS P.E. #104123

RW BUILDING CONSULTANTS, INC.
P.O. Box 230 Vairico FL 33595
Phone No.: 813.659.9197
TEXAS BOARD OF PROFESSIONAL ENGINEERS
CERTIFICATE OF REGISTRATION # F-11852

PRODUCT: SUNRISE WINDOWS

PART OR ASSEMBLY:
BILL OF MATERIALS
& GLAZING DETAILS

NO.	DATE	BY	REVISIONS

DATE: 11/27/19

SCALE: N.T.S.

DWG. BY: TRJ

CHK. BY: LFS

DRAWING NO.:

TX-4956

SHEET 4 OF 4