

REVISIONS			
REV	DESCRIPTION	DATE	APPROVED
A	REVISED COMPLIANCE	02/18/16	R.L.
B	REVISED PER NEW REQUIREMENTS	06/04/19	R.L.

NOTES:

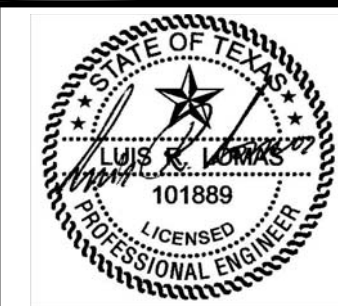
1. THE PRODUCT SHOWN HEREIN IS DESIGNED AND MANUFACTURED TO COMPLY WITH REQUIREMENTS OF THE 2006 IBC AND 2006 IRC WITH STATE OF TEXAS MODIFICATIONS AND THE 2009 IBC, 2009 IRC, 2012 IBC, 2012 IRC, 2015 IBC AND 2015 IRC.
2. WOOD FRAMING AND MASONRY OPENING TO BE DESIGNED AND ANCHORED TO PROPERLY TRANSFER ALL LOADS TO STRUCTURE. FRAMING AND MASONRY OPENING IS THE RESPONSIBILITY OF THE ARCHITECT OR ENGINEER OF RECORD.
3. 1X BUCK OVER MASONRY/CONCRETE IS OPTIONAL.
4. WHERE SHIM OR BUCK THICKNESS IS LESS THAN 1-1/2" WINDOW UNITS MUST BE ANCHORED THROUGH THE FRAME IN ACCORDANCE WITH MANUFACTURER'S PUBLISHED INSTALLATION INSTRUCTIONS. ANCHORS SHALL BE SECURELY FASTENED DIRECTLY INTO MASONRY, CONCRETE OR OTHER STRUCTURAL SUBSTRATE MATERIAL.
5. WHERE WOOD BUCK THICKNESS IS 1-1/2" OR GREATER, BUCK SHALL BE SECURELY FASTENED TO MASONRY, CONCRETE OR OTHER STRUCTURAL SUBSTRATE. WINDOW UNITS MAY BE ANCHORED THROUGH FRAME TO SECURED WOOD BUCK IN ACCORDANCE WITH MANUFACTURER'S PUBLISHED INSTALLATION INSTRUCTIONS.
6. WHERE 1X BUCK IS NOT USED DISSIMILAR MATERIALS MUST BE SEPARATED WITH APPROVED COATING OR MEMBRANE. SELECTION OF COATING OR MEMBRANE IS THE RESPONSIBILITY OF THE ARCHITECT OR ENGINEER OF RECORD.
7. BUCKS SHALL EXTEND BEYOND WINDOW INTERIOR FACE SO THAT FULL FRAME SUPPORT IS PROVIDED.
8. SHIM AS REQUIRED AT EACH ANCHOR LOCATION WITH LOAD BEARING SHIM. SHIM WHERE SPACE OF 1/16" OR GREATER OCCURS. MAXIMUM ALLOWABLE SHIM STACK TO BE 1/4".
9. SHIMS SHALL BE LOCATED, APPLIED AND MADE FROM MATERIALS AND THICKNESS CAPABLE OF SUSTAINING APPLICABLE LOADS.
10. WIND LOAD DURATION FACTOR Cd=1.6 WAS USED FOR WOOD ANCHOR CALCULATIONS.
11. FRAME MATERIAL: EXTRUDED RIGID PVC.
12. UNITS MUST BE GLAZED PER ASTM E1300-04/09, SEE SHEET 2 FOR GLASS DETAIL.
13. APPROVED IMPACT PROTECTIVE SYSTEM IS NOT REQUIRED FOR THIS PRODUCT IN WIND BORNE DEBRIS REGIONS.
14. FOR ANCHORING INTO WOOD FRAMING OR 2X BUCK USE #10 WOOD SCREWS WITH SUFFICIENT LENGTH TO ACHIEVE A 1 3/8" MINIMUM EMBEDMENT INTO SUBSTRATE. LOCATE ANCHORS AS SHOWN IN ELEVATIONS AND INSTALLATION DETAILS.

15. FOR ANCHORING INTO MASONRY/CONCRETE USE 3/16" TAPCONS WITH SUFFICIENT LENGTH TO ACHIEVE A 1 1/4" MINIMUM EMBEDMENT INTO SUBSTRATE WITH 2" MINIMUM EDGE DISTANCE. LOCATE ANCHORS AS SHOWN IN ELEVATIONS AND INSTALLATION DETAILS.
16. FOR ANCHORING INTO METAL STRUCTURE USE #10 SMS OR SELF DRILLING SCREWS WITH SUFFICIENT LENGTH TO ACHIEVE 3 THREADS MINIMUM BEYOND STRUCTURE INTERIOR WALL. LOCATE ANCHORS AS SHOWN IN ELEVATIONS AND INSTALLATION DETAILS.
17. ALL FASTENERS TO BE CORROSION RESISTANT.
18. INSTALLATION ANCHORS SHALL BE INSTALLED IN ACCORDANCE WITH ANCHOR MANUFACTURER'S INSTALLATION INSTRUCTIONS AND ANCHORS SHALL NOT BE USED IN SUBSTRATES WITH STRENGTHS LESS THAN THE MINIMUM STRENGTH SPECIFIED BELOW:
  - A. WOOD - MINIMUM SPECIFIC GRAVITY OF G=0.42
  - B. CONCRETE - MINIMUM COMPRESSIVE STRENGTH OF 3,192 PSI.
  - C. MASONRY - STRENGTH CONFORMANCE TO ASTM C-90, GRADE N, TYPE 1 (OR GREATER).
  - D. METAL STRUCTURE: STEEL 18GA, 33KSI OR ALUMINUM 6063-T5 .048" THICK MINIMUM

SIGNED: 06/04/2019

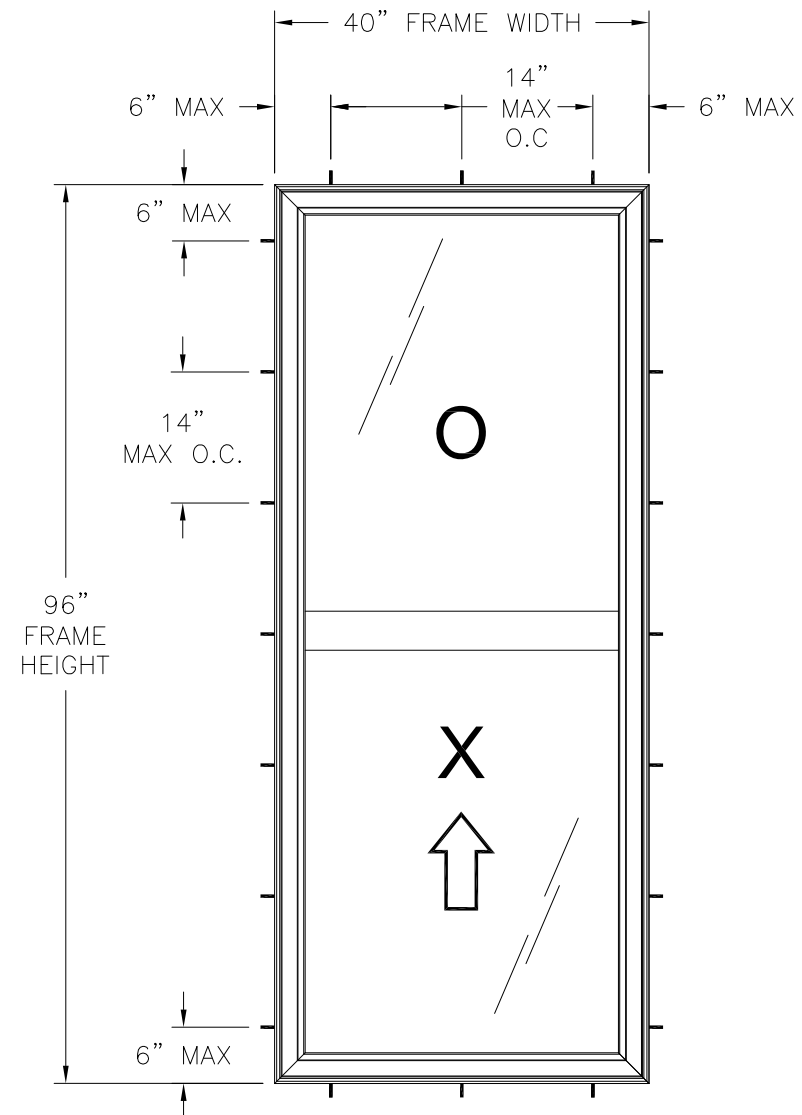
TABLE OF CONTENTS	
SHEET NO.	DESCRIPTION
1	NOTES
2	ELEVATION AND GLASS DETAIL.
3 - 4	INSTALLATION DETAILS
5	COMPONENTS

<b>REGENCY PLUS, INC.</b> 2000 LOCUST GAP HIGHWAY MT. CARMEL, PA 17851		
SERIES 6714 VINYL TILT SINGLE HUNG WINDOW IMPACT 40" X 96" NOTES		
DRAWN: N.G.	DWG NO. 08-02521	REV B
SCALE NTS	DATE 11/04/14	SHEET 1 OF 5
L. ROBERTO LOMAS P.E. 1432 WOODFORD RD LEWISVILLE, NC 27023 434-688-0609 rllomas@rlomaspe.com		



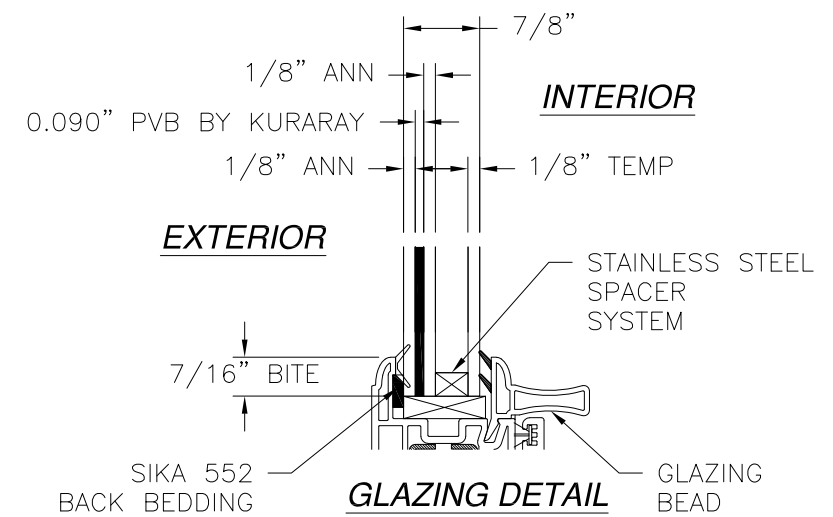
Luis R. Lomas P.E.  
TX No.: 101889

REVISIONS			
REV	DESCRIPTION	DATE	APPROVED
A	REVISED COMPLIANCE	02/18/16	R.L.
B	REVISED PER NEW REQUIREMENTS	06/04/19	R.L.



**NOTES:**

1. PANEL SIZE: 37 3/16" X 46 15/16"
2. D.L.O.: 34 5/8" X 43 3/4"
3. 1" X 1/4" WEEP HOLES LOCATED AT SILL FACE 1 1/2" FROM EACH END.
4. 1 1/4" X 5/16" WEEP HOLE WITH PLASTIC COVER LOCATED AT EXTERIOR SILL FACE 3 1/2" FROM EACH END.



**SERIES 6714 IMPACT RATED VINYL TILT SINGLE HUNG WINDOW**  
EXTERIOR VIEW

DESIGN PRESSURE RATING	IMPACT RATING
±50.0PSF	LARGE AND SMALL MISSILE IMPACT

MISSILE LEVEL D, WIND ZONE 4  
40" X 96" UNIT SHOWN. OTHER SIZES APPROVED AS LONG AS  
FRAME AREA DOES NOT EXCEED 26.66 FT<sup>2</sup>

**HARDWARE SCHEDULE**

A.	(2) METAL CAM-TYPE SWEEP LOCK 8 1/2" FROM EACH END ACTIVE MEETING RAIL
B.	(2) METAL KEEPER IN EXTERIOR MEETING RAIL AT LOCK POSITIONS
C.	(1) 4-COIL SPRING BALANCE SYSTEM AT EACH JAMB TRACK
D.	(1) DIE-CAST PIVOT BAR AT EACH END OF BOTTOM RAIL
E.	(1) STEEL BAR REINFORCEMENT AT STILES
F.	(1) GALVANIZED STEEL TUBE AT MEETING RAILS AND BOTTOM RAIL

SIGNED: 06/04/2019

**REGENCY PLUS, INC.**

2000 LOCUST GAP HIGHWAY  
MT. CARMEL, PA 17851

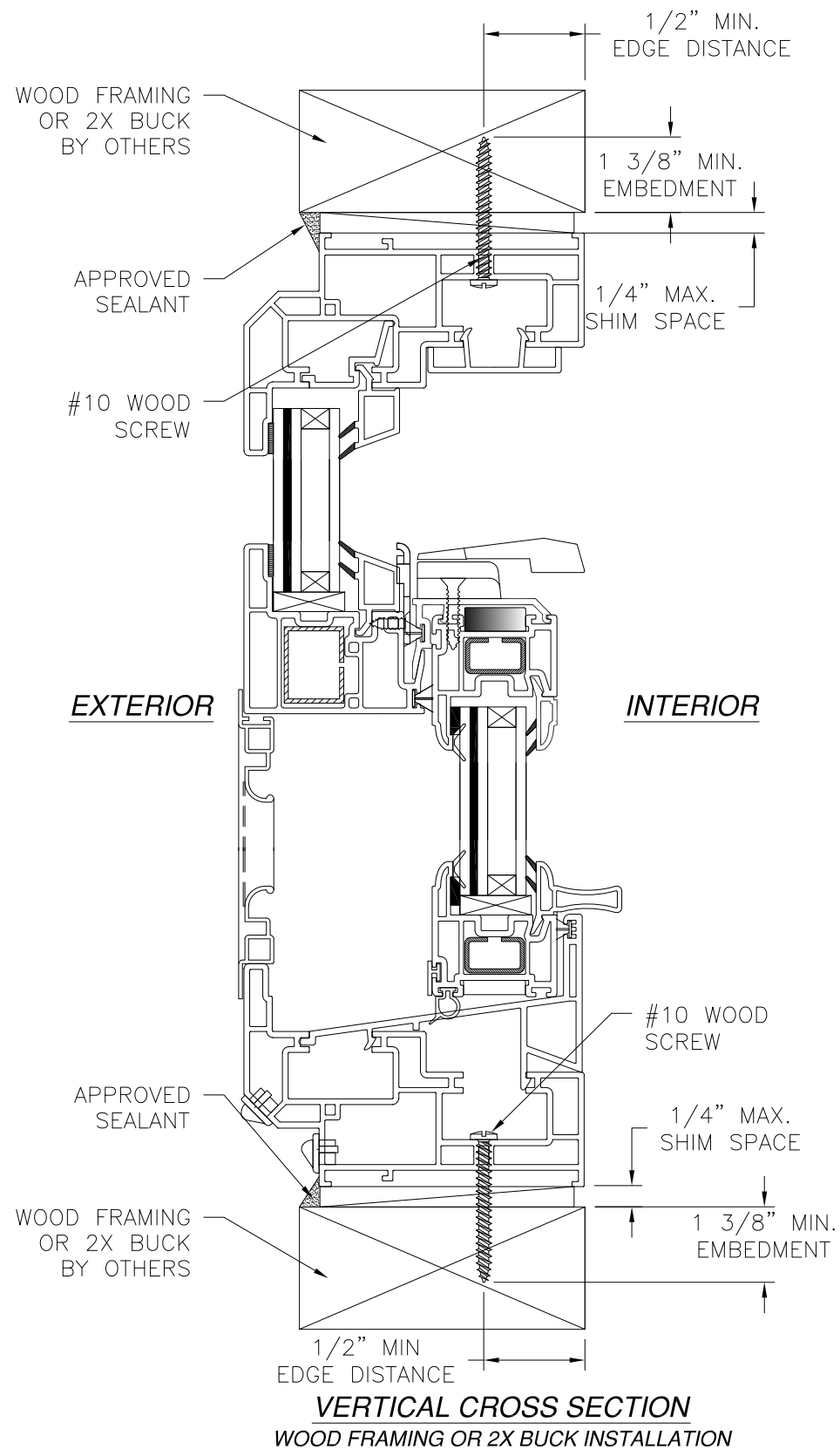
SERIES 6714 VINYL TILT SINGLE HUNG WINDOW  
IMPACT 40" X 96"  
ELEVATION AND GLAZING DETAIL

DRAWN: N.G.	DWG NO. 08-02521	REV B
SCALE NTS	DATE 11/04/14	SHEET 2 OF 5

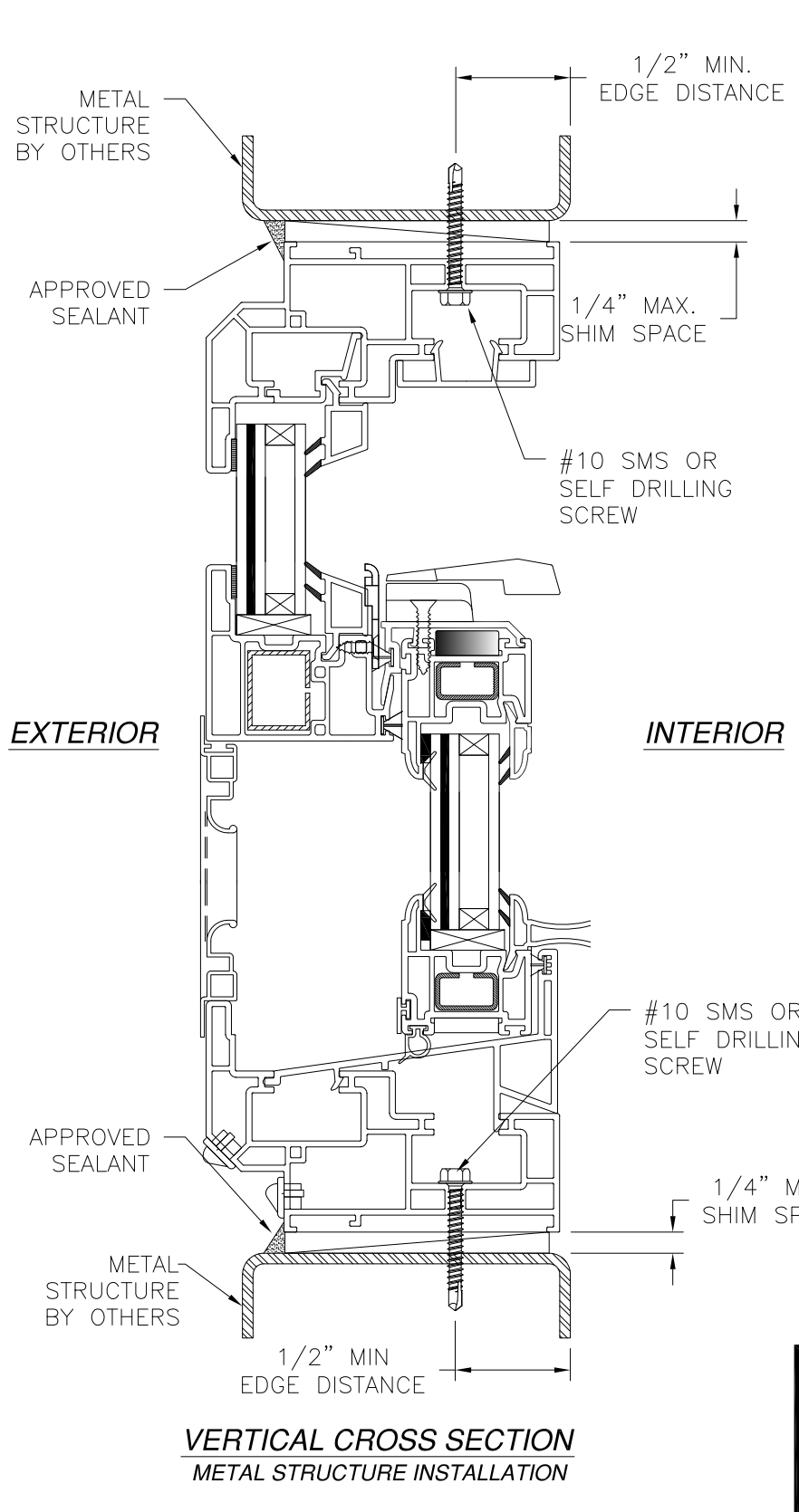
L. ROBERTO LOMAS P.E.  
1432 WOODFORD RD LEWISVILLE, NC 27023  
434-688-0609 rllomas@rlomaspe.com



Luis R. Lomas P.E.  
TX No.: 101889

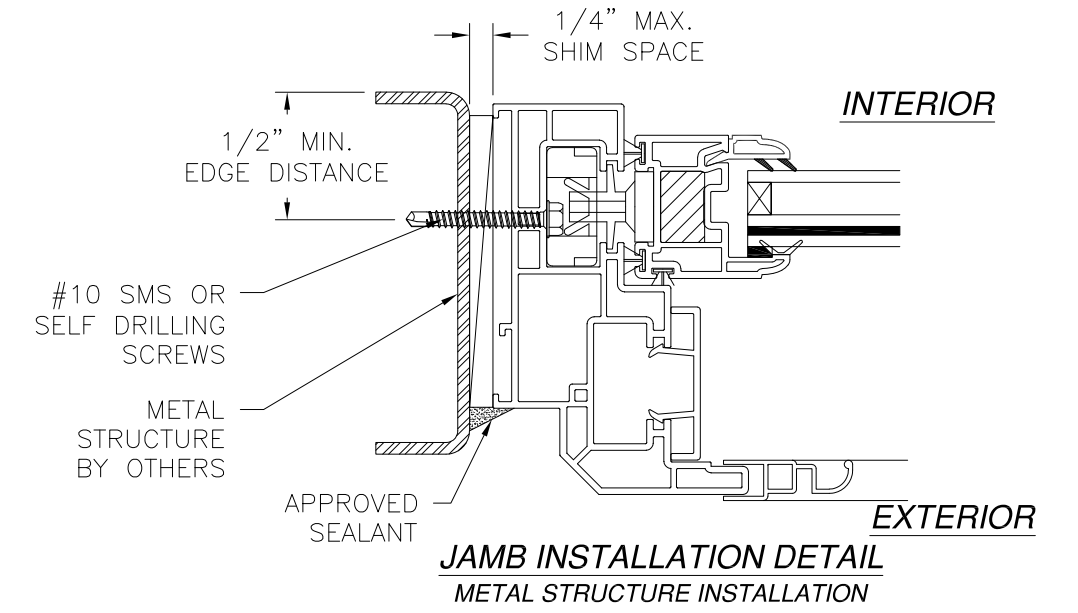


**VERTICAL CROSS SECTION**  
WOOD FRAMING OR 2X BUCK INSTALLATION

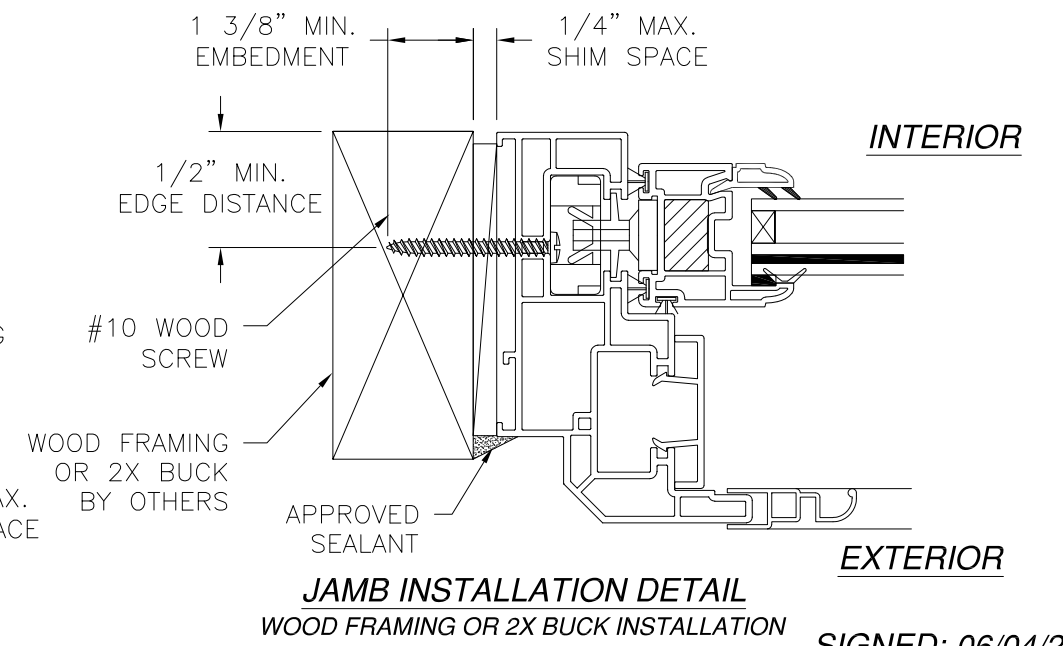


**VERTICAL CROSS SECTION**  
METAL STRUCTURE INSTALLATION

REVISIONS			
REV	DESCRIPTION	DATE	APPROVED
A	REVISED COMPLIANCE	02/18/16	R.L.
B	REVISED PER NEW REQUIREMENTS	06/04/19	R.L.



**JAMB INSTALLATION DETAIL**  
METAL STRUCTURE INSTALLATION



**JAMB INSTALLATION DETAIL**  
WOOD FRAMING OR 2X BUCK INSTALLATION

SIGNED: 06/04/2019

**NOTES:**  
1. INTERIOR AND EXTERIOR FINISHES, BY OTHERS, NOT SHOWN FOR CLARITY.  
2. PERIMETER AND JOINT SEALANT BY OTHERS TO BE DESIGNED IN ACCORDANCE WITH ASTM E2112

REGENCY PLUS, INC.  
2000 LOCUST GAP HIGHWAY  
MT. CARMEL, PA 17851

SERIES 6714 VINYL TILT SINGLE HUNG WINDOW  
IMPACT 40" X 96"  
INSTALLATION DETAILS

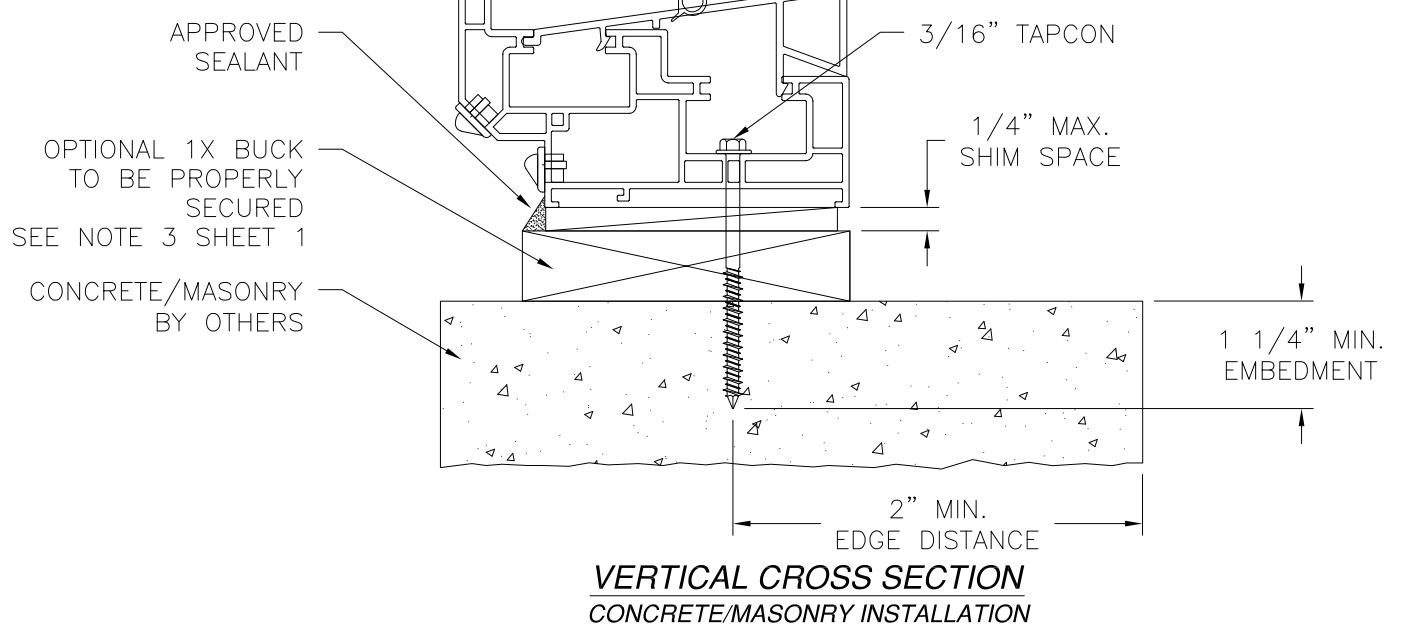
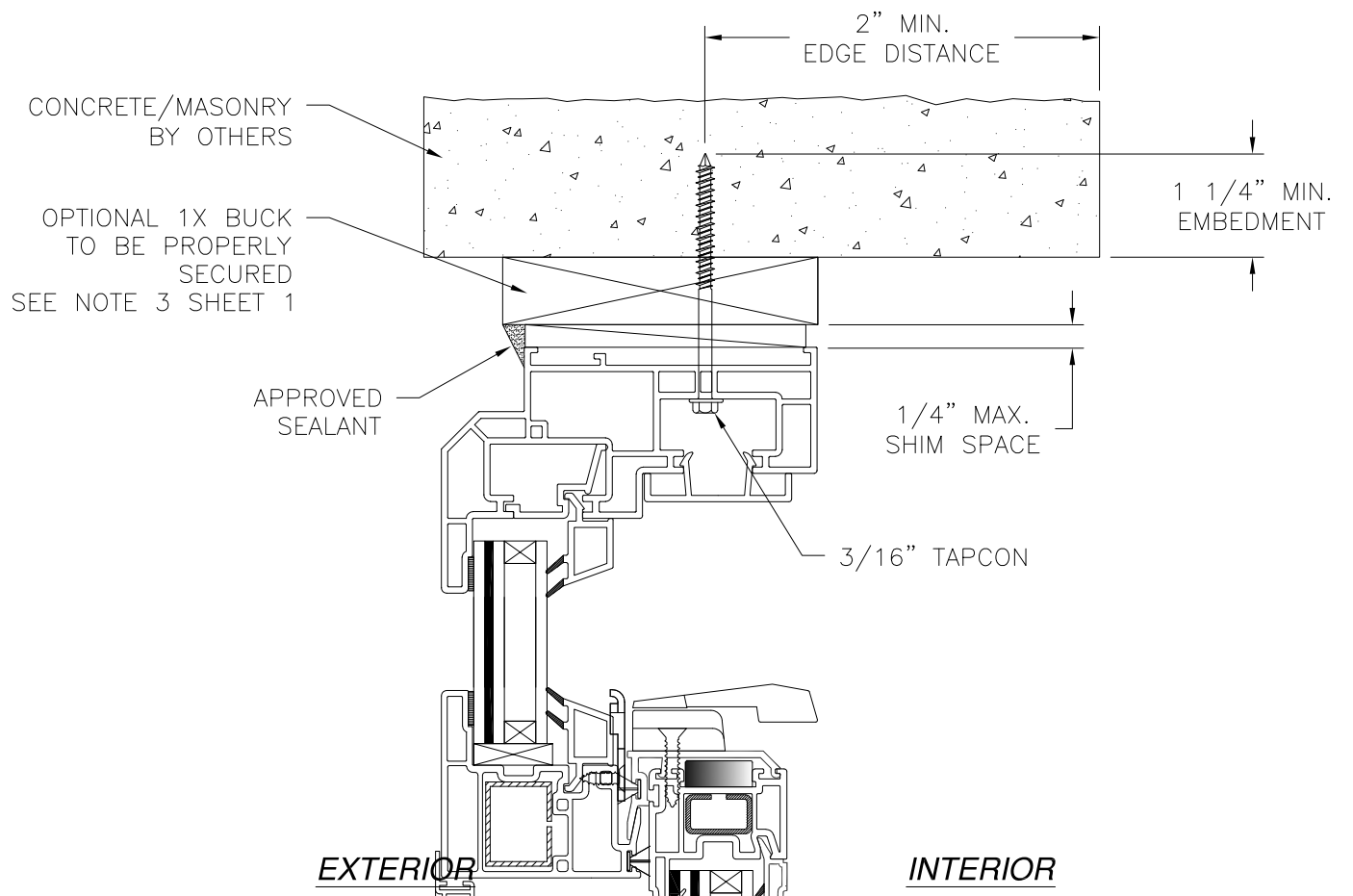
DRAWN: N.G.	DWG NO. 08-02521	REV B
SCALE NTS	DATE 11/04/14	SHEET 3 OF 5

L. ROBERTO LOMAS P.E.  
1432 WOODFORD RD LEWISVILLE, NC 27023  
434-688-0609 rllomas@rlomaspe.com

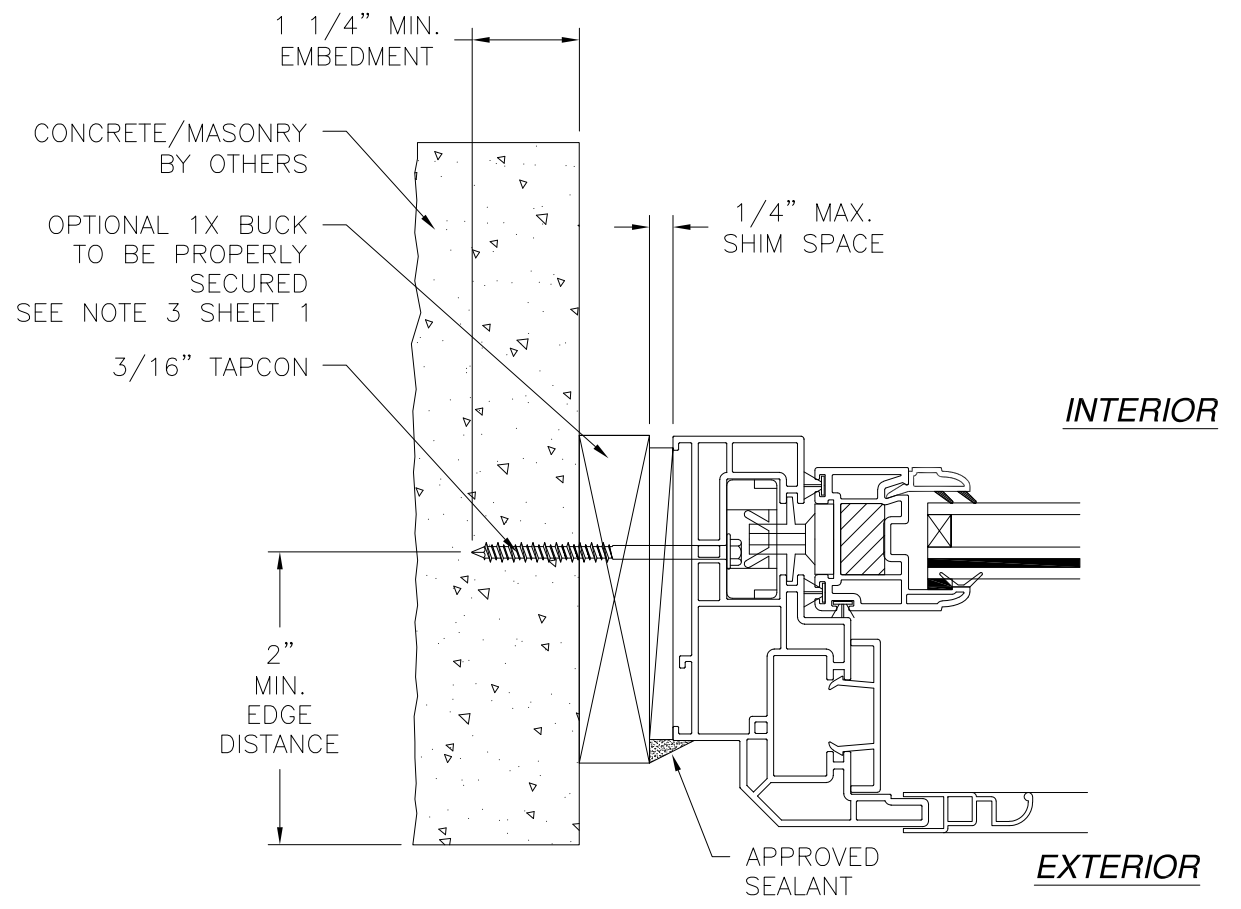


Luis R. Lomas P.E.  
TX No.: 101889

REVISIONS			
REV	DESCRIPTION	DATE	APPROVED
A	REVISED COMPLIANCE	02/18/16	R.L.
B	REVISED PER NEW REQUIREMENTS	06/04/19	R.L.



**VERTICAL CROSS SECTION**  
CONCRETE/MASONRY INSTALLATION



**JAMB INSTALLATION DETAIL**  
CONCRETE/MASONRY INSTALLATION

- NOTES:**
1. INTERIOR AND EXTERIOR FINISHES, BY OTHERS, NOT SHOWN FOR CLARITY.
  2. PERIMETER AND JOINT SEALANT BY OTHERS TO BE DESIGNED IN ACCORDANCE WITH ASTM E2112

SIGNED: 06/04/2019

REGENCY PLUS, INC.  
2000 LOCUST GAP HIGHWAY  
MT. CARMEL, PA 17851

SERIES 6714 VINYL TILT SINGLE HUNG WINDOW  
IMPACT 40" X 96"  
INSTALLATION DETAILS

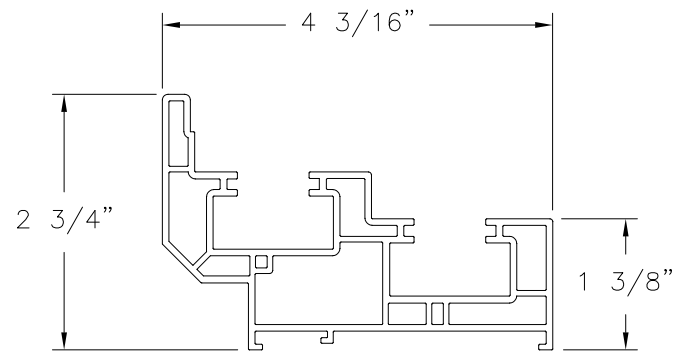
DRAWN: N.G.	DWG NO. 08-02521	REV B
SCALE NTS	DATE 11/04/14	SHEET 4 OF 5

L. ROBERTO LOMAS P.E.  
1432 WOODFORD RD LEWISVILLE, NC 27023  
434-688-0609 rllomas@rlomaspe.com

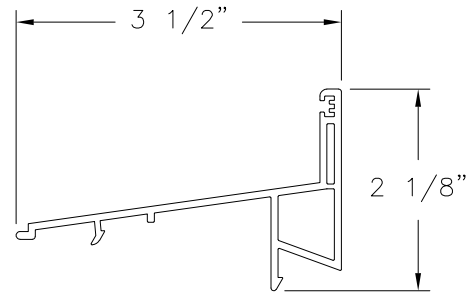


Luis R. Lomas P.E.  
TX No.: 101889

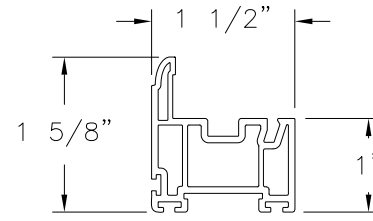
REVISIONS			
REV	DESCRIPTION	DATE	APPROVED
A	REVISED COMPLIANCE	02/18/16	R.L.
B	REVISED PER NEW REQUIREMENTS	06/04/19	R.L.



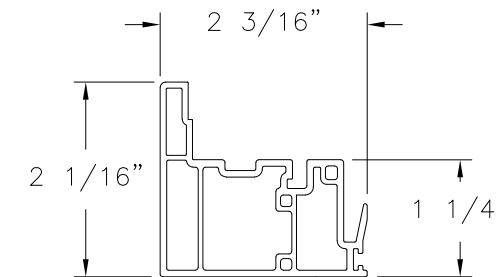
**MAIN FRAME**  
RIGID PVC (1060)



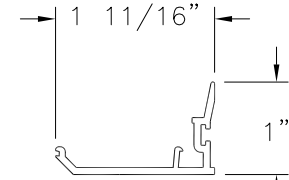
**SLOPED SILL COVER**  
RIGID PVC (1181)



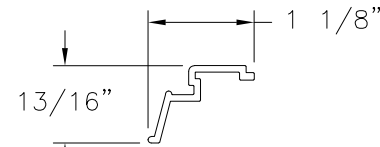
**SASH PROFILE**  
RIGID/FLEXIBLE PVC (1282)



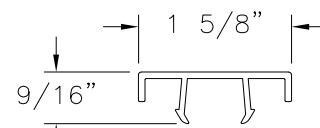
**MULLION**  
RIGID PVC (1063)



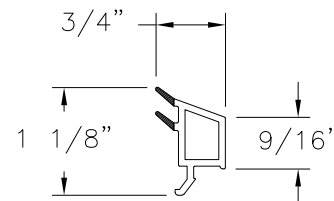
**INTERLOCK COVER**  
RIGID PVC (1180)



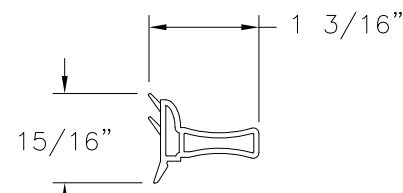
**POCKET INSERT**  
RIGID PVC (1079)



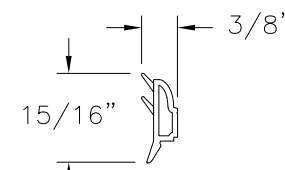
**PANEL STOP/  
FRAME COVER**  
RIGID PVC (1070)



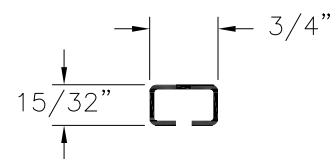
**FIXED FRAME/  
SINGLE HUNG GLASS STOP**  
RIGID/FLEXIBLE PVC (1103)



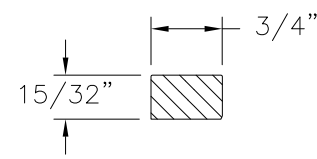
**GLAZING STOP**  
RIGID PVC (X0033)



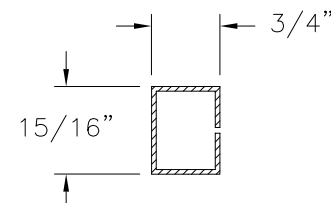
**GLAZING STOP**  
RIGID PVC (X0035)



**RAILS REINFORCEMENT**  
GALVANIZED STEEL, .060" THICKNESS (ST-226)



**STILE BAR REINFORCEMENT**  
STEEL (SFB01410)



**MIDDLE RAIL REINFORCEMENT**  
GALVANIZED STEEL, .050" THICKNESS (ST-888)

REGENCY PLUS, INC.

2000 LOCUST GAP HIGHWAY  
MT. CARMEL, PA 17851

SERIES 6714 VINYL TILT SINGLE HUNG WINDOW  
IMPACT 40" X 96"  
COMPONENTS

DRAWN: N.G.	DWG NO. 08-02521	REV B
SCALE NTS	DATE 11/04/14	SHEET 5 OF 5

L. ROBERTO LOMAS P.E.  
1432 WOODFORD RD LEWISVILLE, NC 27023  
434-688-0609 rllomas@rlomaspe.com

SIGNED: 06/04/2019



Luis R. Lomas P.E.  
TX No.: 101889