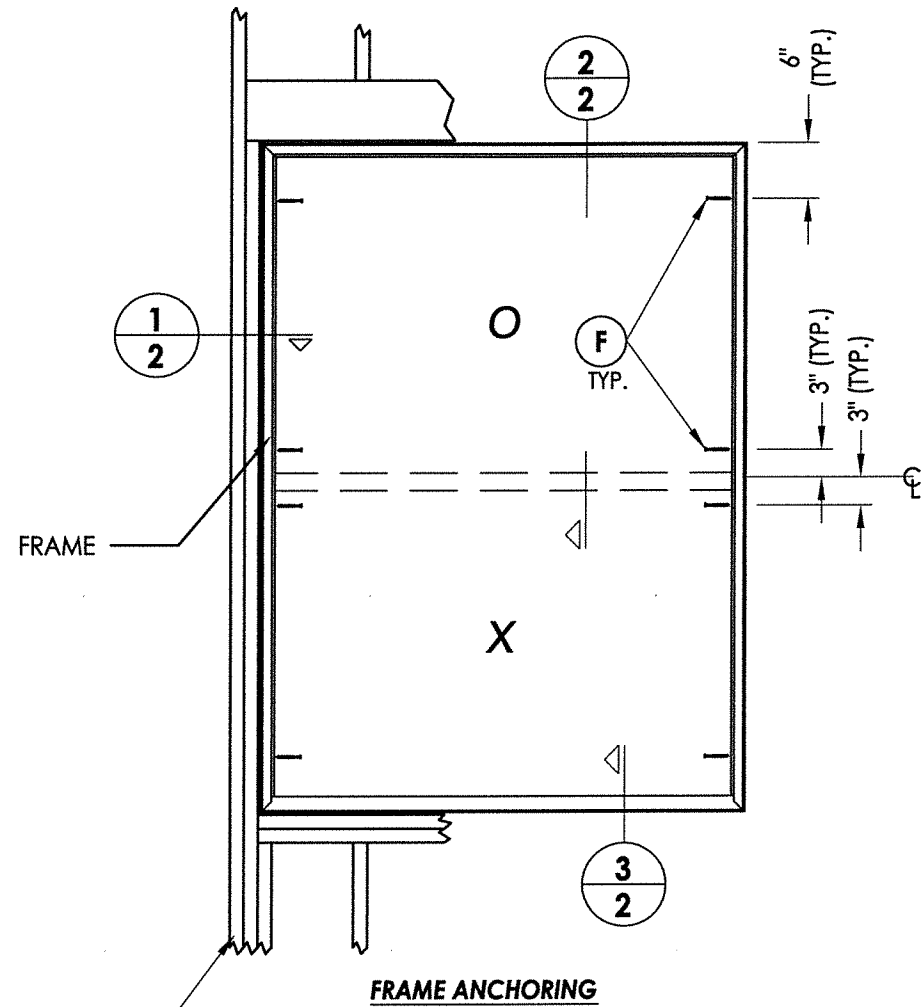
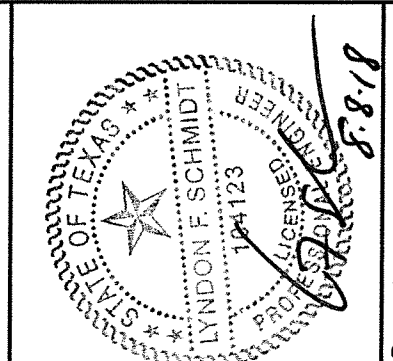
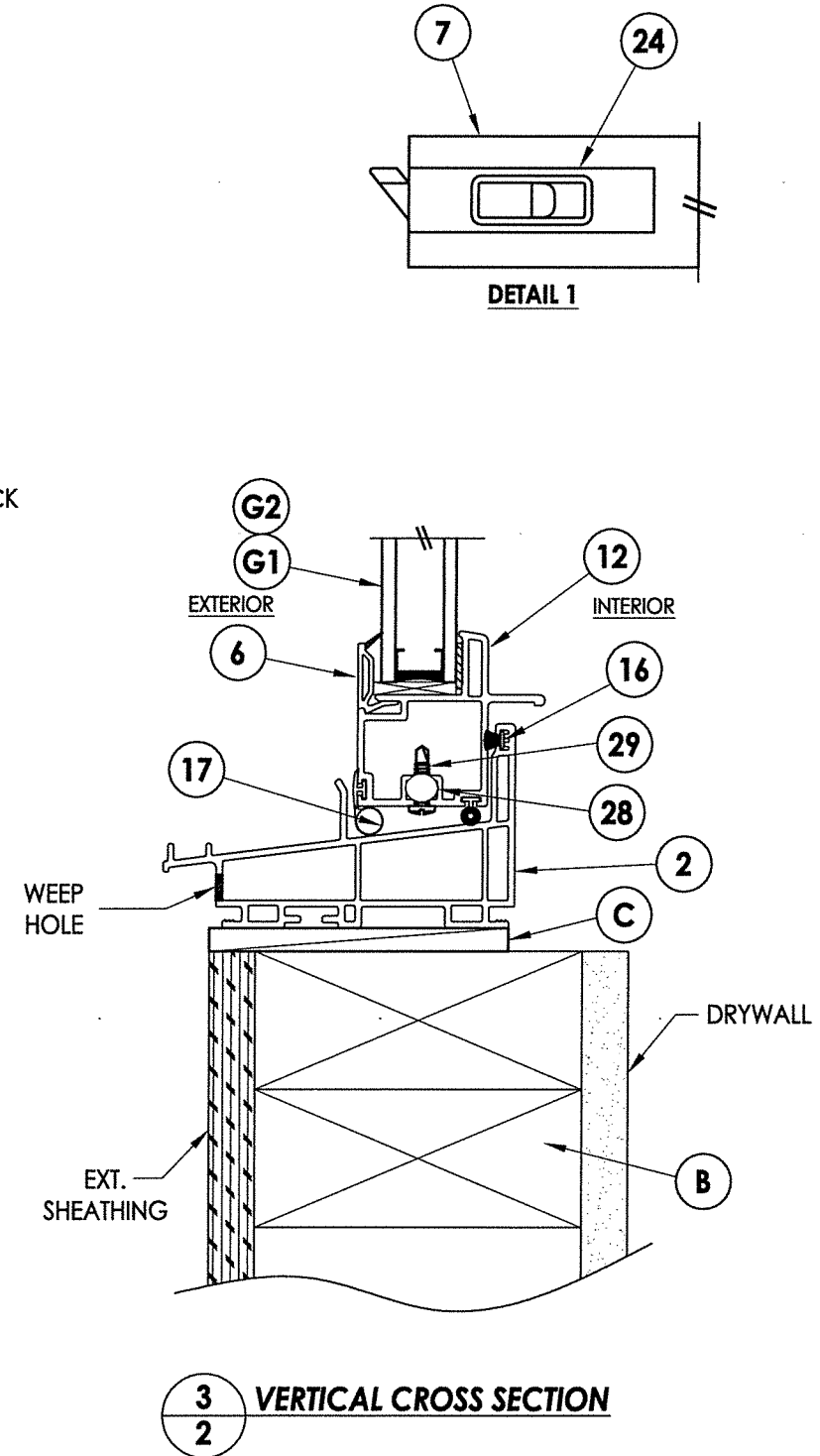
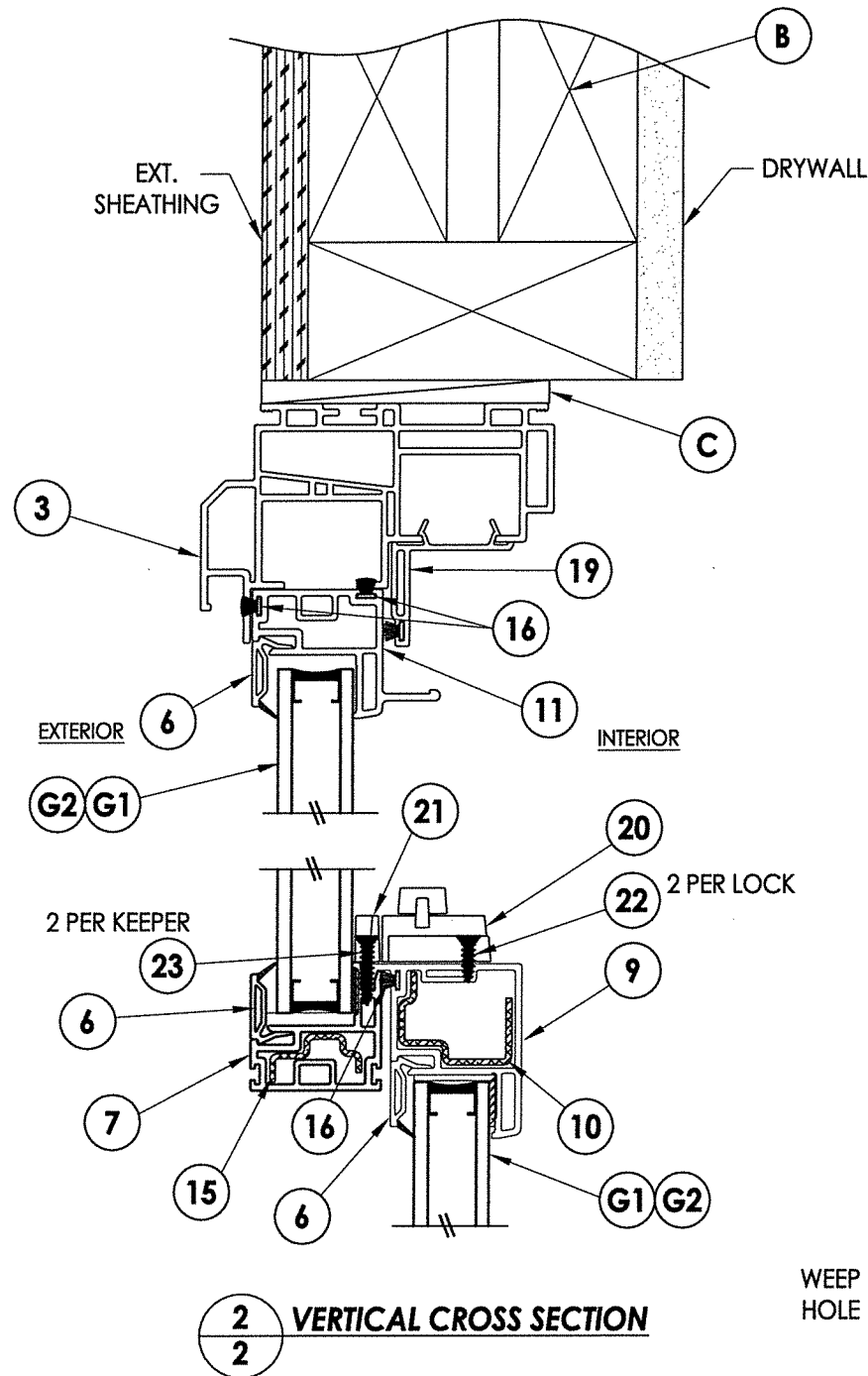
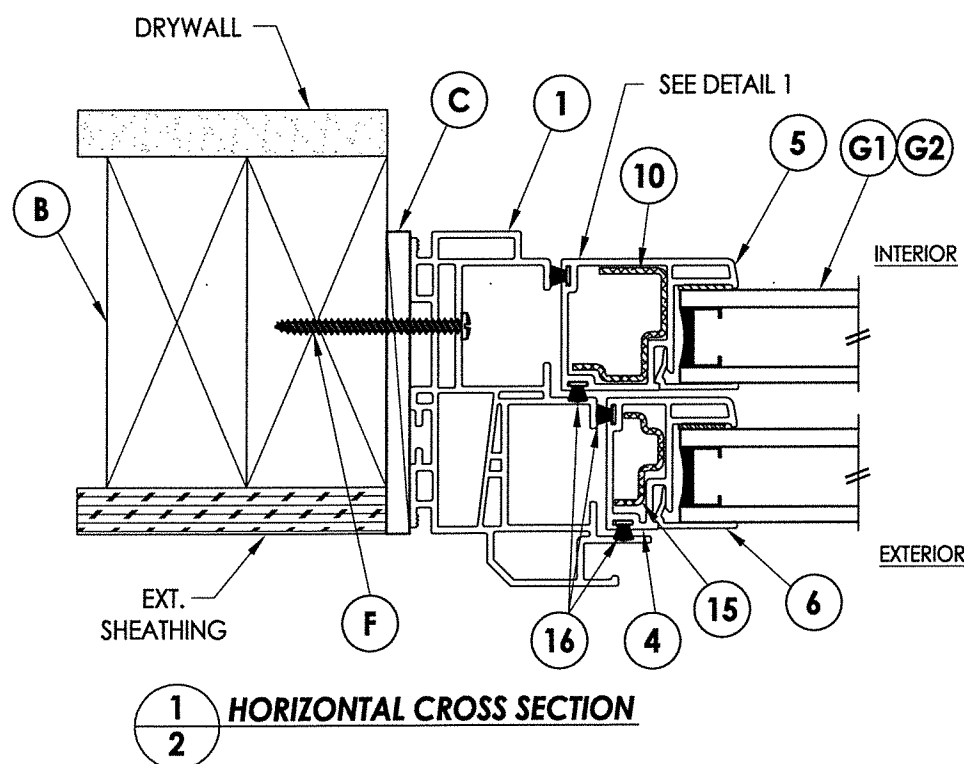


R:\Clients\Wincore PERMANENT.B - Texas Dept of Ins\Double Hung\WIN 1136 Double Hung\C - Drawings\TX-4474.4475.dwg, 2.1



2x framing to be designed by the engineer or architect of record based on wind loads and the cladding being used (typ.).



Documents Prepared By: Lyndon F. Schmidt, P.E.
TEXAS P.E. #104123

R.W. BUILDING CONSULTANTS, INC.
P.O. Box 230 Valrico FL 33595
Phone No.: 813.659.9197

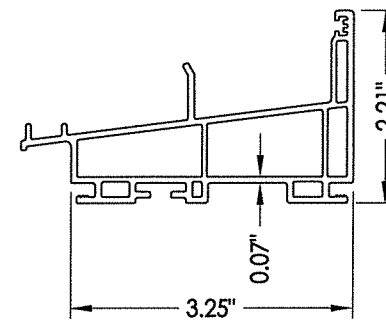
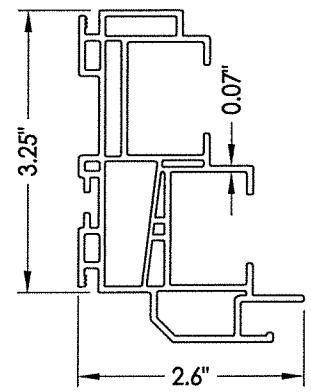
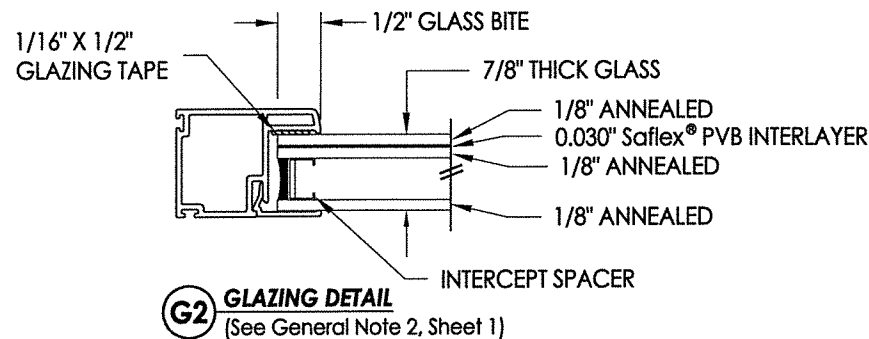
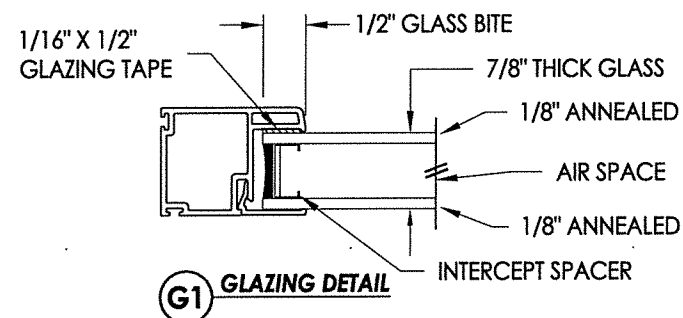
TEXAS BOARD OF PROFESSIONAL ENGINEERS
CERTIFICATE OF REGISTRATION # F-11852

PRODUCT:		7700/9900 SERIES	
		Vinyl Double Hung Window	
PART OR ASSEMBLY:		CROSS SECTIONS & FRAME ANCHORING	
NO.	DATE	LFS	BY
1	8/08/18	ADDED 48" X 90" FRAME SIZE	
REVISIONS			
DATE: 9/09/14			
SCALE: N.T.S.			
DWG. BY: JK			
CHK. BY: LFS			
DRAWING NO.: TX-4475			
SHEET 2 OF 3			

© 2014 R.W. BUILDING CONSULTANTS INC.

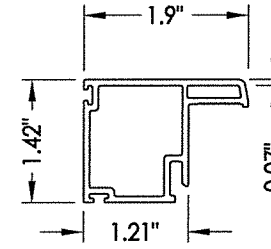
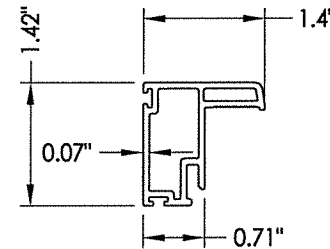
BILL OF MATERIALS		
ITEM #	DESCRIPTION	MATERIAL
B	2X FRAMING (SG >= 0.42)	WOOD
C	1/4" MAX. SHIM SPACE	-
F	#8 X 2" PH WOOD SCREW (1-3/8" MIN. EMBEDMENT)	STEEL
1	FRAME JAMB* (DH 7701)	PVC
2	SILL* (DH 7703)	PVC
3	FRAME HEAD* (DH 7701)	PVC
4	UPPER SASH STILE* (SE 3035)	PVC
5	LOWER SASH STILE* (SE 3045)	PVC
6	GLAZING BEAD*	PVC
7	KEEPER RAIL UPPER SASH* (SE 3034)	PVC
9	LOCK RAIL LOWER SASH* (SE 3046)	PVC
10	REINFORCEMENT (RF 3101)	STEEL
11	TOP RAIL UPPER SASH* (SE 3037)	PVC
12	BOTTOM RAIL LOWER SASH* (SE 3047)	PVC
15	REINFORCEMENT (RF 3001)	STEEL
16	WEATHERSTRIP ULTRA FAB .270 PILE - 270 -1875B	-
17	WEATHERSTRIP SILLBULB (AMESBURY 32690)	-
19	HEAD ADAPTER* (DH 3005)	PVC
20	LOCK 8513 / 8845 LAWRENCE	PVC
21	KEEPER 2700 - 214 LAWRENCE	PVC
22	#8 X 1" PFH (VINYL LOCK SCREWS)	STEEL
23	#6 X 1-1/2" PFH (VINYL LOCK SCREWS)	STEEL
24	TOP SASH TILT LATCH - ASHLAND	PVC
28	PIVOT BAR - CALDWELL	-
29	#8 X 1/2" SELF TAPPING PPH SMS	STEEL

* THE APPROVED WHITE RIGID PVC EXTERIOR EXTRUSIONS FOR WINDOWS ARE TO BE PRODUCED BY EXTRUDERS LICENSEES IN "AAMA CERTIFICATION PROGRAMS FOR RIGID PVC EXTRUSIONS".



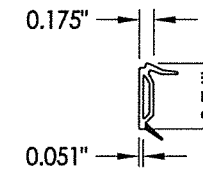
3 1 FRAME HEAD & JAMB

2 SILL

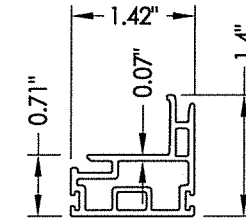


4 SASH STILE Top

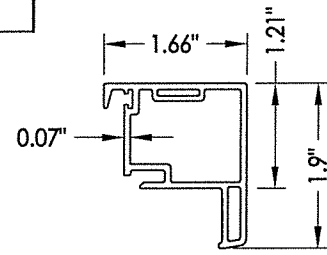
5 SASH STILE Bottom



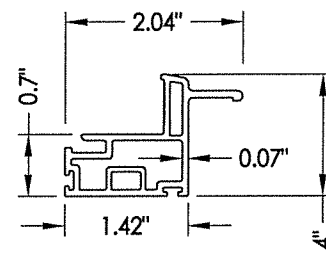
6 GLAZING BEAD



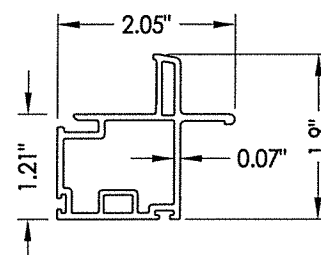
7 KEEPER RAIL Upper Sash



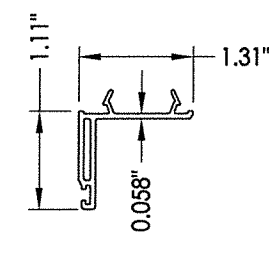
9 LOCK RAIL Lower Sash



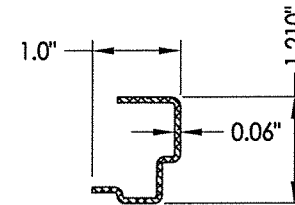
11 TOP RAIL Upper Sash



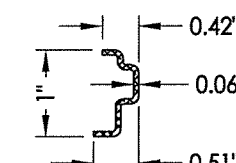
12 BOTTOM RAIL Lower Sash



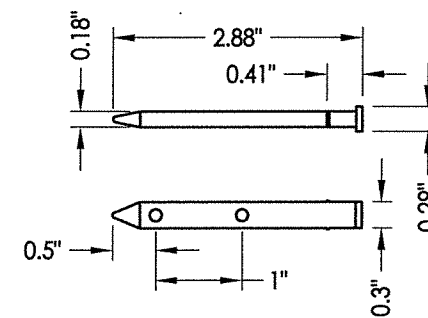
19 HEAD ADAPTER



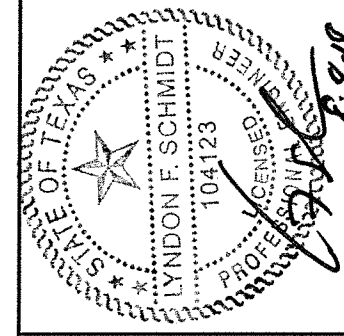
10 REINFORCEMENT Steel



15 REINFORCEMENT Steel



28 PIVOT BAR



Documents Prepared By: Lyndon F. Schmidt, P.E.
TEXAS P.E. #104123

RW BUILDING CONSULTANTS, INC.
P.O. Box 230 Valrico FL, 33595
Phone No.: 813.659.9197
TEXAS BOARD OF PROFESSIONAL ENGINEERS
CERTIFICATE OF REGISTRATION # F-11852

PRODUCT: 7700/9900 SERIES
Vinyl Double Hung Window

PART OR ASSEMBLY:
BILL OF MATERIALS
COMPONENTS & GLAZING DETAIL

NO.	DATE	BY	REVISIONS
1	8/08/18	LFS	ADDED 48" X 90" FRAME SIZE

DATE: 9/09/14
SCALE: N.T.S.
DWG. BY: JK
CHK. BY: LFS
DRAWING NO.: TX-4475
SHEET 3 OF 3