

REVISIONS			
REV	DESCRIPTION	DATE	APPROVED

NOTES:

1. THE PRODUCT SHOWN HEREIN IS DESIGNED AND MANUFACTURED TO COMPLY WITH REQUIREMENTS OF THE 2018 IBC AND 2018 IRC.

2. WOOD FRAMING, METAL STRUCTURE AND MASONRY OPENING TO BE DESIGNED AND ANCHORED TO PROPERLY TRANSFER ALL LOADS TO STRUCTURE. FRAMING AND MASONRY OPENING IS THE RESPONSIBILITY OF THE ARCHITECT OR ENGINEER OF RECORD.

3. WHERE SHIM OR BUCK THICKNESS IS LESS THAN 1–1/2” UNITS MUST BE ANCHORED THROUGH THE FRAME IN ACCORDANCE WITH MANUFACTURER’S PUBLISHED INSTALLATION INSTRUCTIONS. ANCHORS SHALL BE SECURELY FASTENED DIRECTLY INTO MASONRY, CONCRETE OR OTHER STRUCTURAL SUBSTRATE MATERIAL.

4. WHERE WOOD BUCK THICKNESS IS 1–1/2” OR GREATER, BUCK SHALL BE SECURELY FASTENED TO MASONRY, CONCRETE OR OTHER STRUCTURAL SUBSTRATE. UNITS MAY BE ANCHORED THROUGH FRAME TO SECURED WOOD BUCK IN ACCORDANCE WITH MANUFACTURER’S PUBLISHED INSTALLATION INSTRUCTIONS.

5. WHERE 1X BUCK IS NOT USED DISSIMILAR MATERIALS MUST BE SEPARATED WITH APPROVED COATING OR MEMBRANE. SELECTION OF COATING OR MEMBRANE IS THE RESPONSIBILITY OF THE ARCHITECT OR ENGINEER OF RECORD.

6. BUCKS SHALL EXTEND BEYOND UNIT FRAME INTERIOR FACE SO THAT FULL FRAME SUPPORT IS PROVIDED.

7. SHIM AS NEEDED AT EACH ANCHOR LOCATION WITH LOAD BEARING SHIM. SHIM WHERE SPACE OF 1/16” OR GREATER OCCURS. MAXIMUM ALLOWABLE SHIM STACK TO BE 1/4”.

8. SHIMS SHALL BE LOCATED, APPLIED AND MADE FROM MATERIALS AND THICKNESS CAPABLE OF SUSTAINING APPLICABLE LOADS.

9. WIND LOAD DURATION FACTOR Cd=1.6 WAS USED FOR WOOD ANCHOR CALCULATIONS.

10. FRAME MATERIAL: EXTRUDED RIGID PVC.

11. UNITS MUST BE GLAZED PER ASTM E1300.

12. APPROVED IMPACT PROTECTIVE SYSTEM IS REQUIRED FOR THIS PRODUCT IN WIND BORNE DEBRIS REGIONS.
13. FOR ANCHORING THROUGH FIN INTO WOOD FRAMING OR 2X BUCK USE #8 WOOD SCREWS WITH SUFFICIENT LENGTH TO ACHIEVE A 1” MINIMUM EMBEDMENT INTO SUBSTRATE. LOCATE ANCHORS AS SHOWN IN ELEVATIONS AND INSTALLATION DETAILS.

14. FOR ANCHORING THROUGH FIN INTO METAL STRUCTURE USE #8 SMS OR SELF DRILLING SCREWS WITH SUFFICIENT LENGTH TO ACHIEVE 3 THREADS MINIMUM BEYOND STRUCTURE INTERIOR WALL. LOCATE ANCHORS AS SHOWN IN ELEVATIONS AND INSTALLATION DETAILS.

15. FOR ANCHORING THROUGH FRAME INTO WOOD FRAMING OR 2X BUCK USE #10 WOOD SCREWS WITH SUFFICIENT LENGTH TO ACHIEVE A 1 1/4” MINIMUM EMBEDMENT INTO SUBSTRATE. LOCATE ANCHORS AS SHOWN IN ELEVATIONS AND INSTALLATION DETAILS.

16. FOR ANCHORING THROUGH FRAME INTO MASONRY/CONCRETE USE 3/16” TAPCONS WITH SUFFICIENT LENGTH TO ACHIEVE A 1 1/4” MINIMUM EMBEDMENT INTO SUBSTRATE WITH 2” MINIMUM EDGE DISTANCE. LOCATE ANCHORS AS SHOWN IN ELEVATIONS AND INSTALLATION DETAILS.

17. FOR ANCHORING THROUGH FRAME INTO METAL STRUCTURE USE #10 SMS OR SELF DRILLING SCREWS WITH SUFFICIENT LENGTH TO ACHIEVE 3 THREADS MINIMUM BEYOND STRUCTURE INTERIOR WALL. LOCATE ANCHORS AS SHOWN IN ELEVATIONS AND INSTALLATION DETAILS.

18. ALL FASTENERS TO BE CORROSION RESISTANT.

19. INSTALLATION ANCHORS SHALL BE INSTALLED IN ACCORDANCE WITH ANCHOR MANUFACTURER’S INSTALLATION INSTRUCTIONS AND ANCHORS SHALL NOT BE USED IN SUBSTRATES WITH STRENGTHS LESS THAN THE MINIMUM STRENGTH SPECIFIED BELOW:

19.1. WOOD: MINIMUM SPECIFIC GRAVITY OF G=0.42

19.2. CONCRETE: MINIMUM COMPRESSIVE STRENGTH OF 2,000 PSI.

19.3. MASONRY: HOLLOW/FILLED BLOCK PER ASTM C90 WITH Fm=2,000PSI MINIMUM.

19.4. METAL STRUCTURE: STEEL 18GA (.048”) FY=33KSI/FU=52KSI OR ALUMINUM 6063–T5 FU=30KSI .125” THICK MINIMUM

SIGNED: 07/30/2024

TABLE OF CONTENTS	
SHEET NO.	DESCRIPTION
1	NOTES
2	ELEVATIONS
3 – 7	INSTALLATION DETAILS
8	COMPONENTS

WINDOW MART

5760 ALBERT PIKE

ROYAL, AR 71968

8500 PICTURE WINDOW

NON-IMPACT

NOTES

DRAWN:

DWG NO.

REV

A.R.

08-04072

—

SCALE

DATE

SHEET

NTS

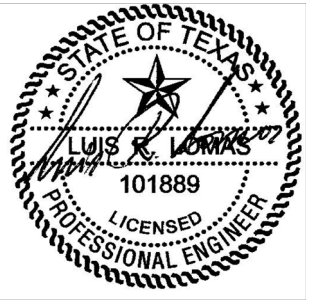
07/16/2024

1 OF 8

L. ROBERTO LOMAS P.E.

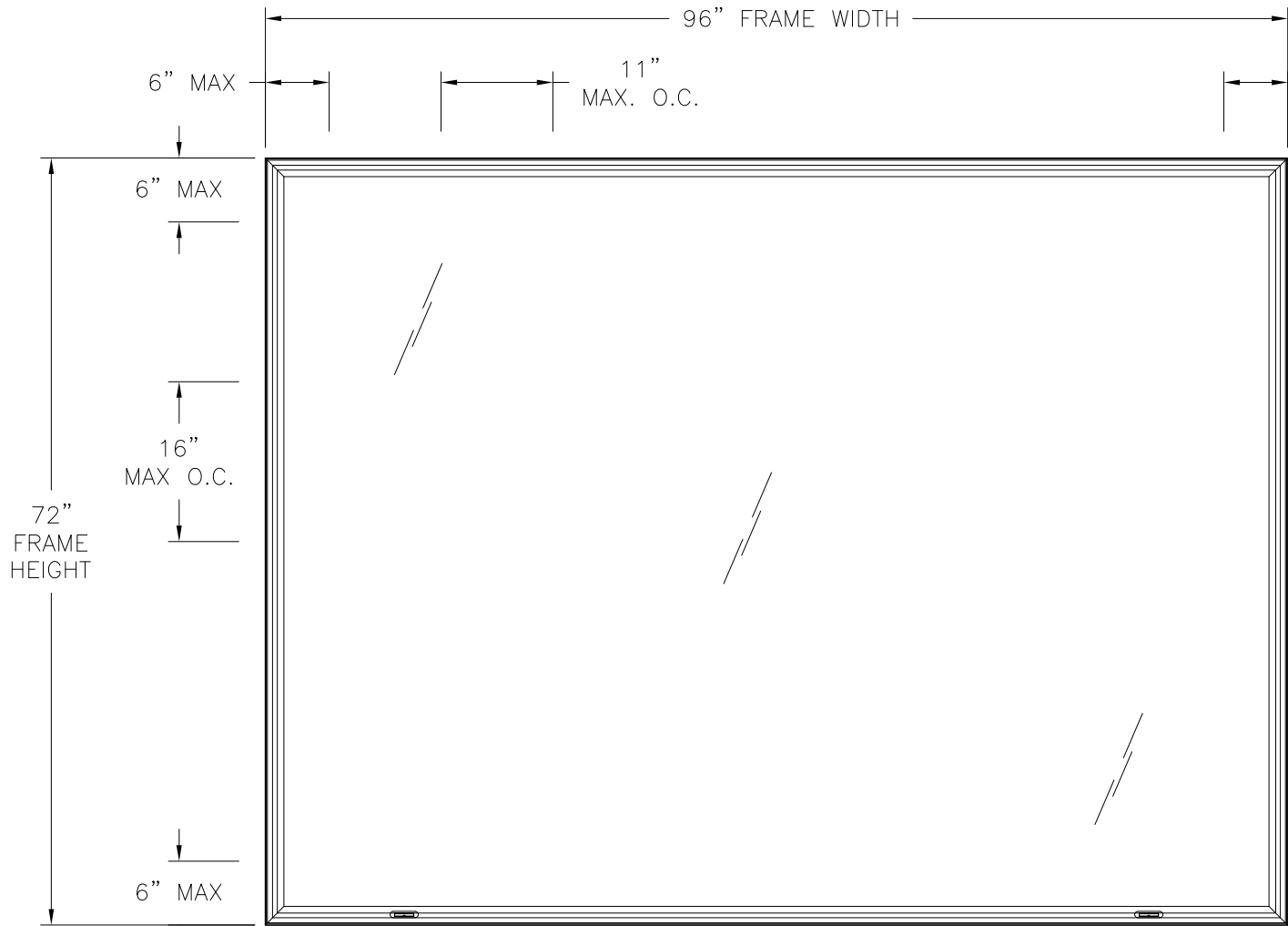
208 7th Ave, INDIALANTIC, FL 32903

434-688-0609 rllomas@lrlomaspe.com

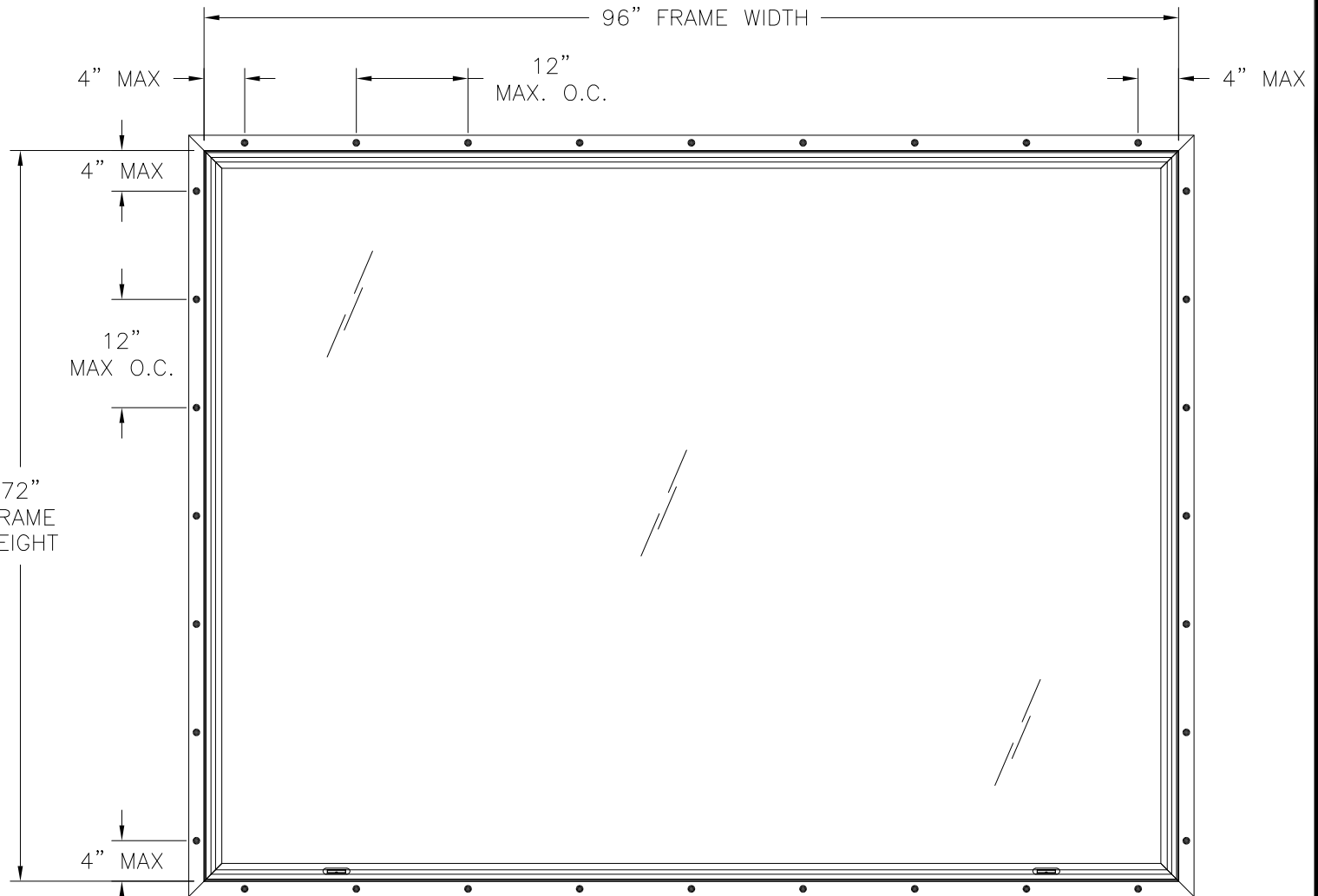


Luis R. Lomas P.E.  
TX No.: 101889

REVISIONS			
REV	DESCRIPTION	DATE	APPROVED



**8300 HORIZONTAL SLIDER WINDOW**  
EXTERIOR VIEW  
FINLESS INSTALLATION



**8300 HORIZONTAL SLIDER WINDOW**  
EXTERIOR VIEW  
FIN INSTALLATION

NOTES:  
1. D.L.O.: 92 1/2" X 68 1/2"

DESIGN PRESSURE RATING	IMPACT RATING
±45.0PSF	NONE

SIGNED: 07/30/2024

WINDOW MART  
5760 ALBERT PIKE  
ROYAL, AR 71968

8500 PICTURE WINDOW  
NON-IMPACT  
ELEVATIONS

DRAWN:  
A.R.

DWG NO.  
08-04072

REV  
-

SCALE NTS

DATE 07/16/2024

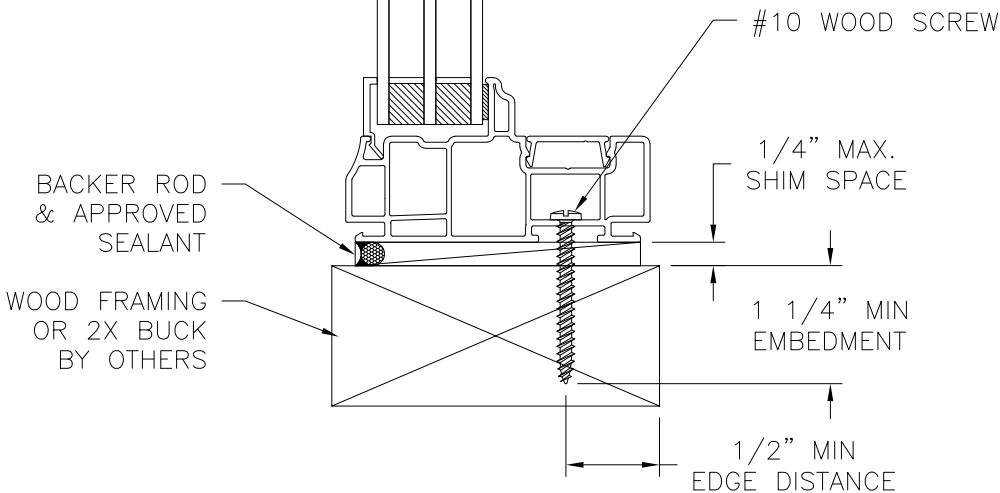
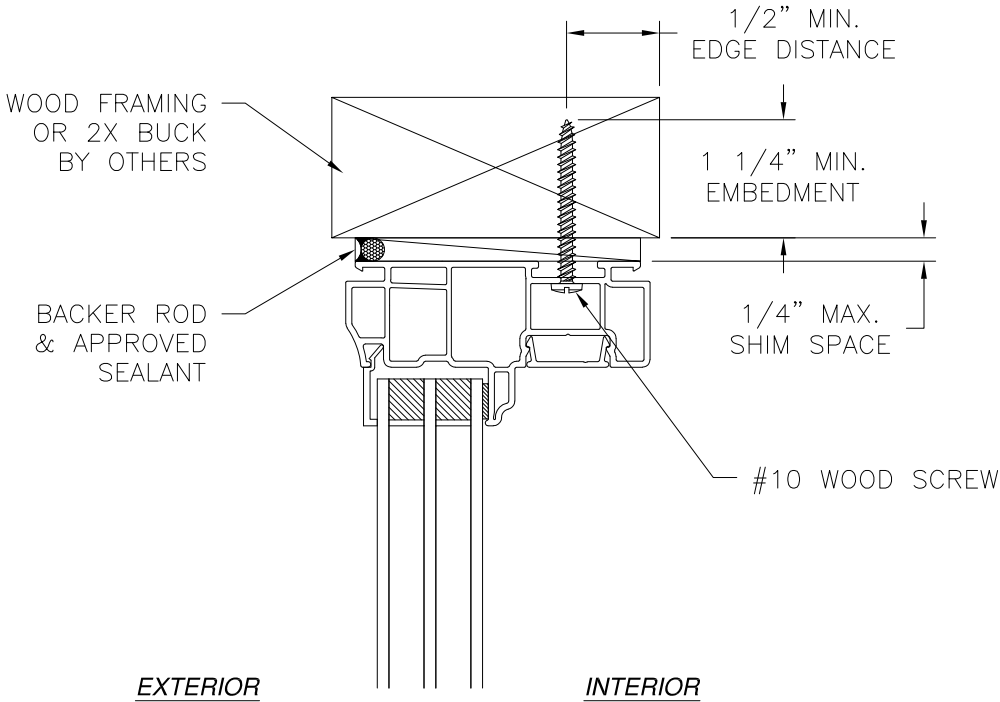
SHEET 2 OF 8

L. ROBERTO LOMAS P.E.  
208 7th Ave, INDIALANTIC, FL 32903  
434-688-0609 rllomas@lrlomaspe.com

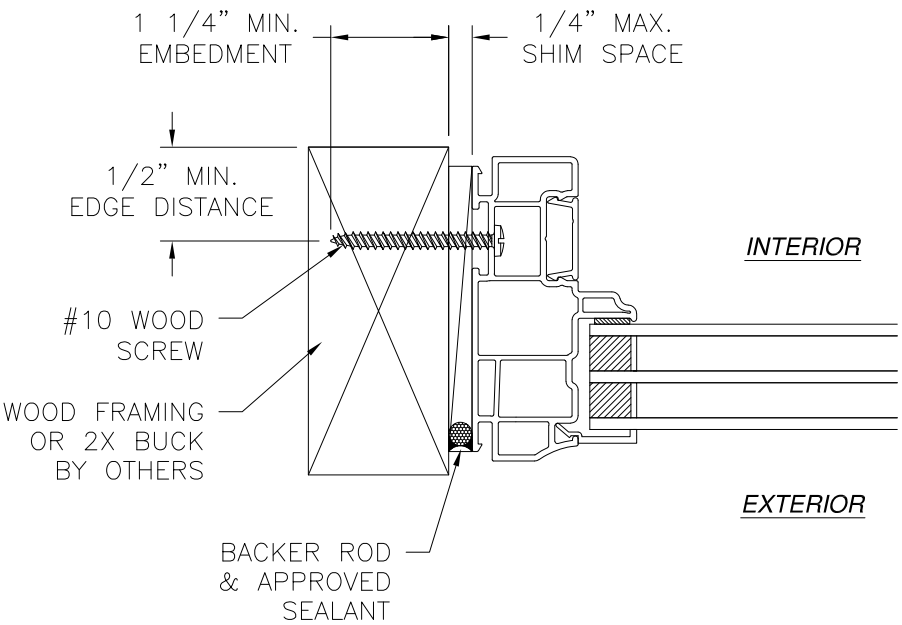


Luis R. Lomas P.E.  
TX No.: 101889

REVISIONS			
REV	DESCRIPTION	DATE	APPROVED



**VERTICAL CROSS SECTION**  
WOOD FRAMING OR 2X BUCK INSTALLATION

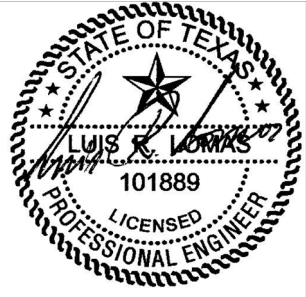


**JAMB INSTALLATION DETAIL**  
WOOD FRAMING OR 2X BUCK INSTALLATION

- NOTES:
- INTERIOR AND EXTERIOR FINISHES, BY OTHERS, NOT SHOWN FOR CLARITY.
  - PERIMETER AND JOINT SEALANT BY OTHERS TO BE DESIGNED IN ACCORDANCE WITH ASTM E2112

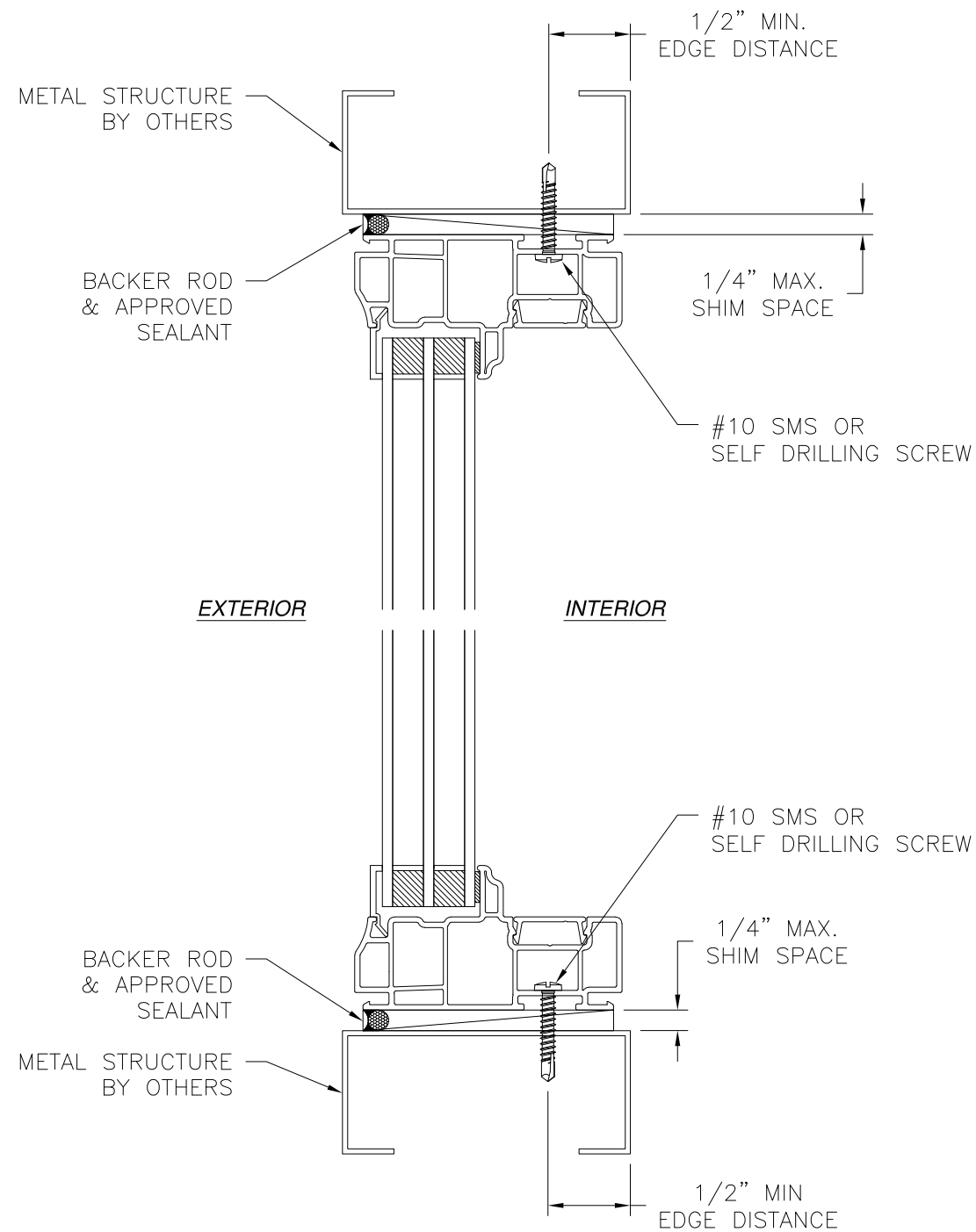
SIGNED: 07/30/2024

WINDOW MART 5760 ALBERT PIKE ROYAL, AR 71968		
8500 PICTURE WINDOW NON-IMPACT INSTALLATION DETAILS		
DRAWN: A.R.	DWG NO. 08-04072	REV -
SCALE NTS	DATE 07/16/2024	SHEET 3 OF 8
L. ROBERTO LOMAS P.E. 208 7th Ave, INDIALANTIC, FL 32903 434-688-0609 rllomas@lrlomaspe.com		

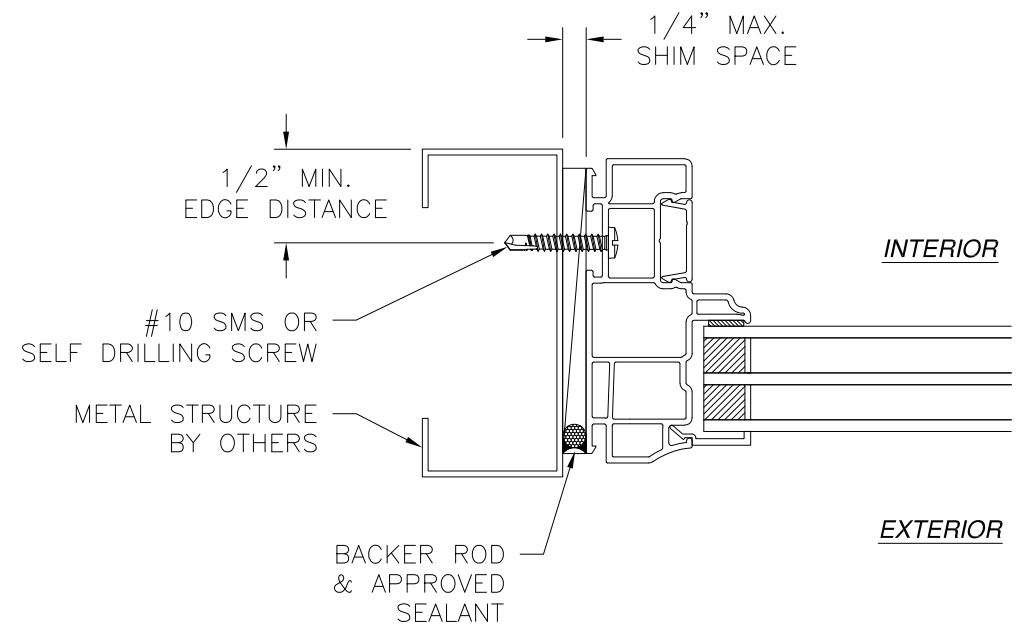


Luis R. Lomas P.E.  
TX No.: 101889

REVISIONS			
REV	DESCRIPTION	DATE	APPROVED



**VERTICAL CROSS SECTION**  
METAL STRUCTURE INSTALLATION



**JAMB INSTALLATION DETAIL**  
METAL STRUCTURE INSTALLATION

- NOTES:
- INTERIOR AND EXTERIOR FINISHES, BY OTHERS, NOT SHOWN FOR CLARITY.
  - PERIMETER AND JOINT SEALANT BY OTHERS TO BE DESIGNED IN ACCORDANCE WITH ASTM E2112

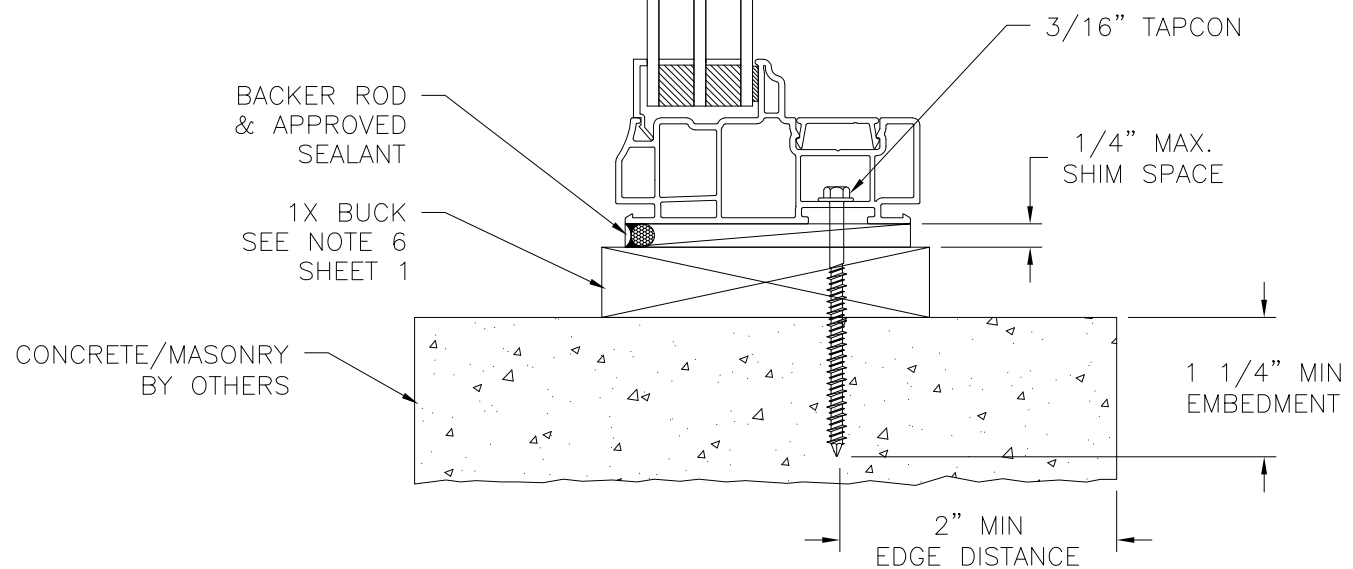
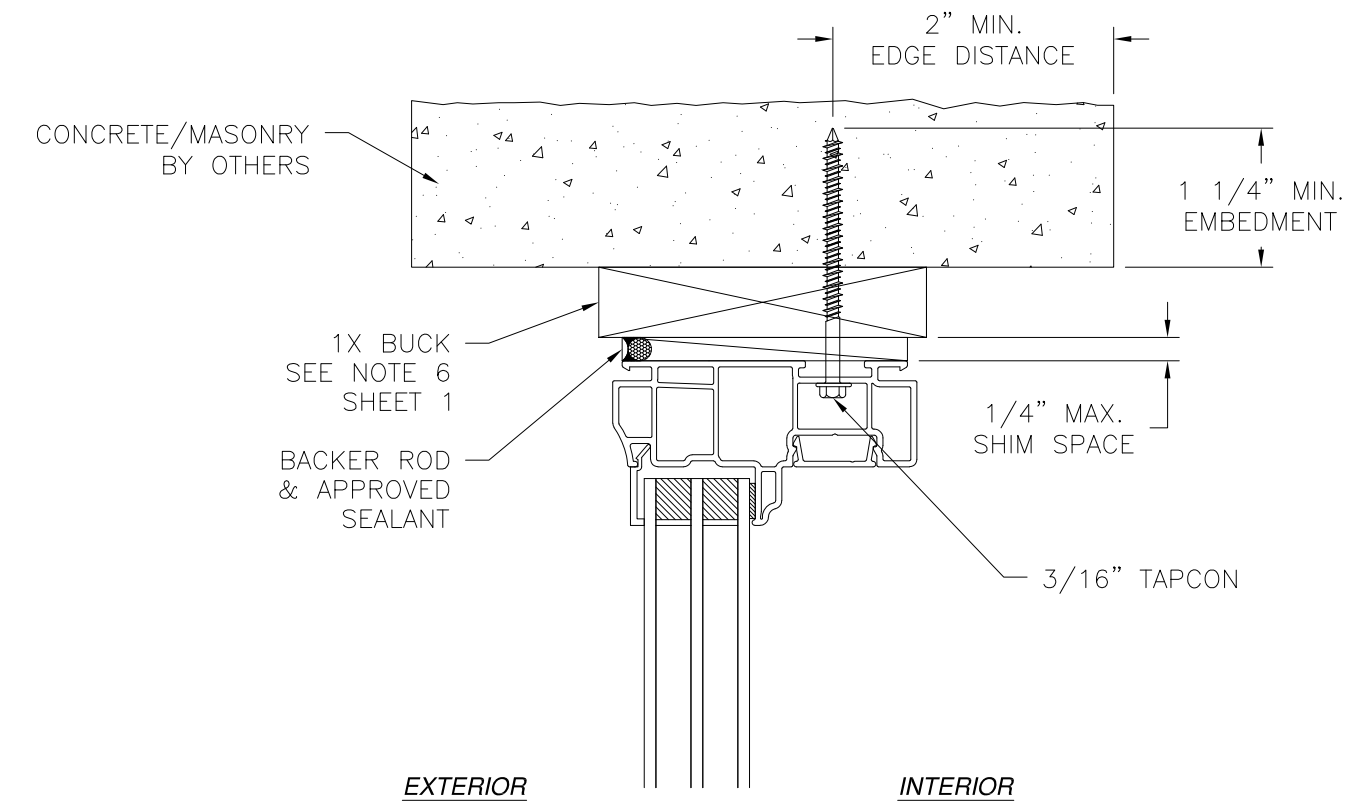
SIGNED: 07/30/2024

WINDOW MART 5760 ALBERT PIKE ROYAL, AR 71968		
8500 PICTURE WINDOW NON-IMPACT INSTALLATION DETAILS		
DRAWN: A.R.	DWG NO. 08-04072	REV -
SCALE NTS	DATE 07/16/2024	SHEET 4 OF 8
L. ROBERTO LOMAS P.E. 208 7th Ave, INDIALANTIC, FL 32903 434-688-0609 rllomas@lrlomaspe.com		

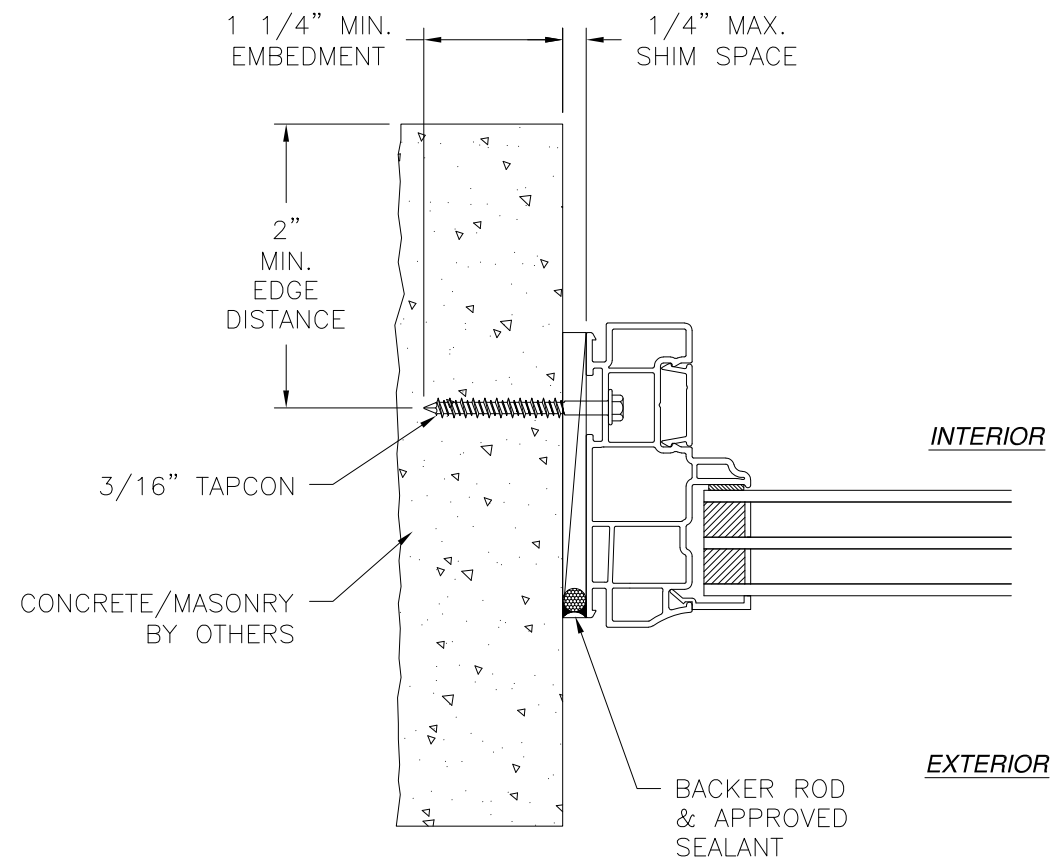


Luis R. Lomas P.E.  
TX No.: 101889

REVISIONS			
REV	DESCRIPTION	DATE	APPROVED



**VERTICAL CROSS SECTION**  
CONCRETE/MASONRY WITH 1X BUCK INSTALLATION  
FOR CONCRETE/MASONRY WITHOUT 1X BUCK REFER TO  
JAMB INSTALLATION DETAIL



**JAMB INSTALLATION DETAIL**  
CONCRETE/MASONRY WITHOUT 1X BUCK INSTALLATION  
FOR CONCRETE/MASONRY WITH 1X BUCK REFER TO  
HEAD AND SILL INSTALLATION DETAILS

**NOTES:**

- INTERIOR AND EXTERIOR FINISHES, BY OTHERS, NOT SHOWN FOR CLARITY.
- PERIMETER AND JOINT SEALANT BY OTHERS TO BE DESIGNED IN ACCORDANCE WITH ASTM E2112

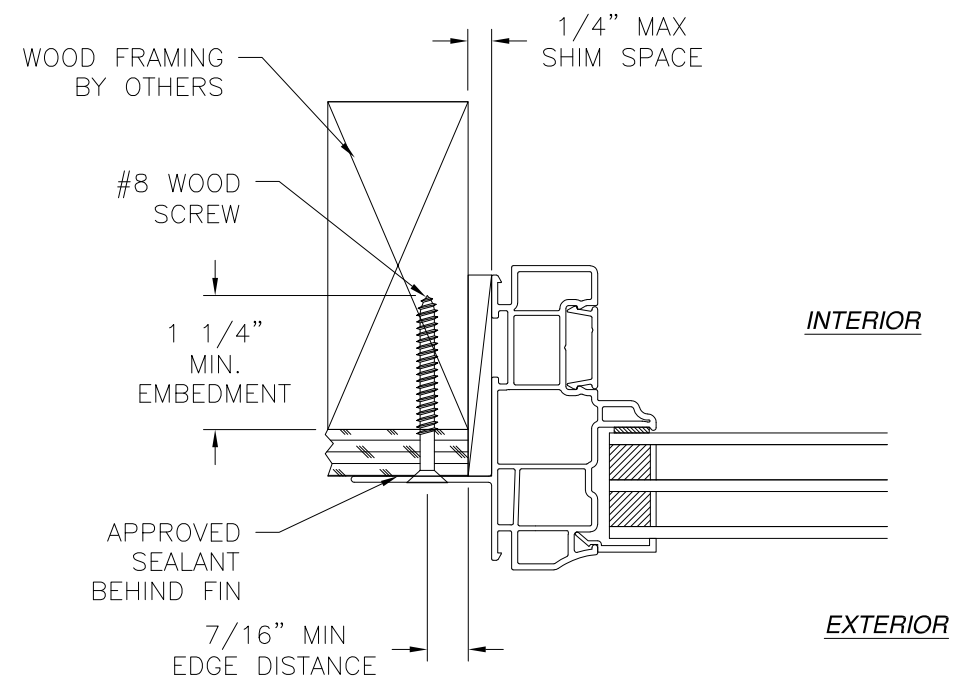
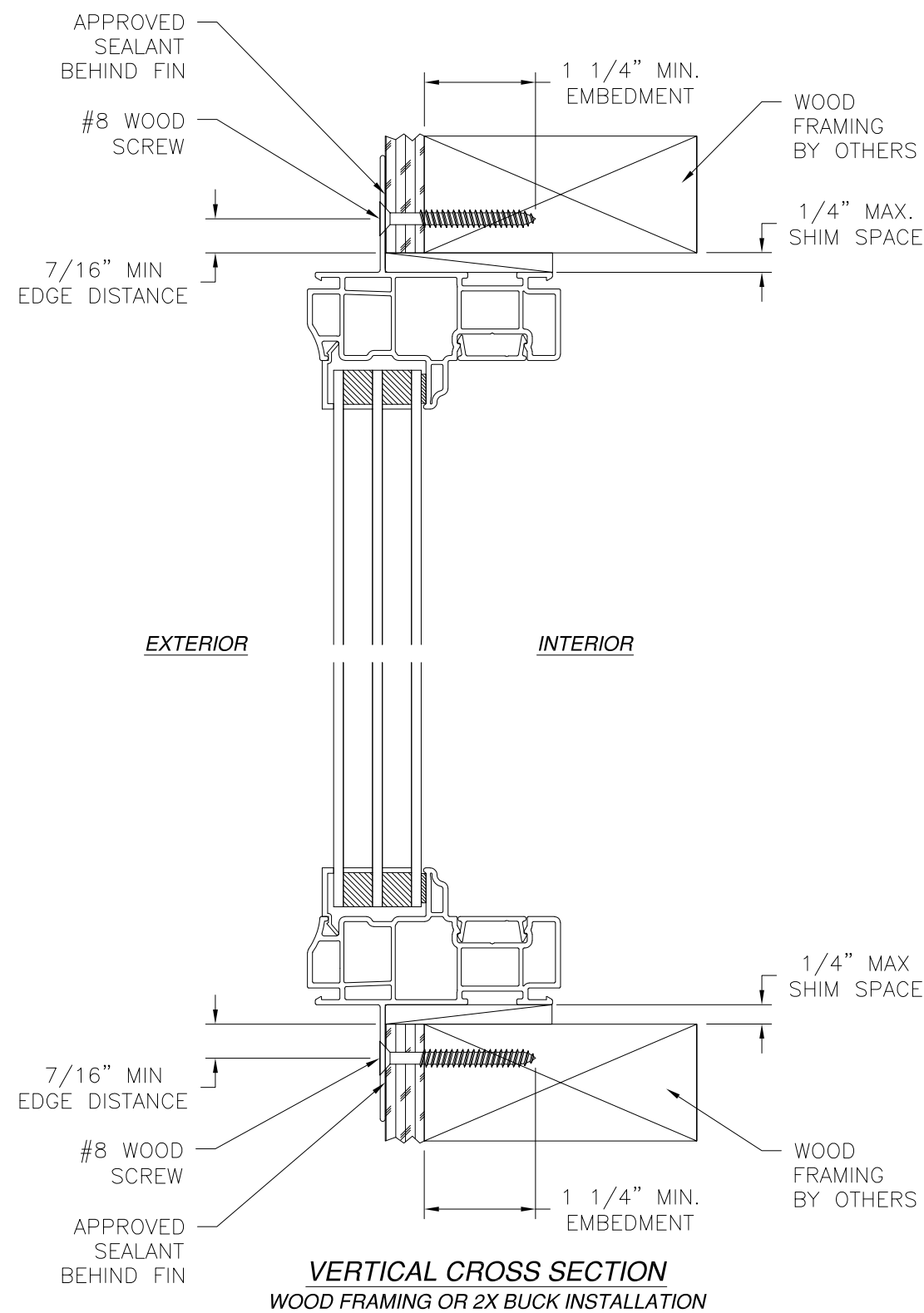
SIGNED: 07/30/2024

WINDOW MART 5760 ALBERT PIKE ROYAL, AR 71968		
8500 PICTURE WINDOW NON-IMPACT INSTALLATION DETAILS		
DRAWN: A.R.	DWG NO. 08-04072	REV -
SCALE NTS	DATE 07/16/2024	SHEET 5 OF 8
L. ROBERTO LOMAS P.E. 208 7th Ave, INDIALANTIC, FL 32903 434-688-0609 rllomas@lrlomaspe.com		



Luis R. Lomas P.E.  
TX No.: 101889

REVISIONS			
REV	DESCRIPTION	DATE	APPROVED

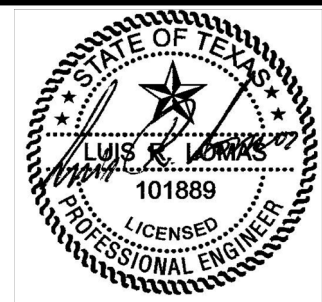


**JAMB INSTALLATION DETAIL**  
WOOD FRAMING OR 2X BUCK INSTALLATION

- NOTES:
1. INTERIOR AND EXTERIOR FINISHES, BY OTHERS, NOT SHOWN FOR CLARITY.
  2. PERIMETER AND JOINT SEALANT BY OTHERS TO BE DESIGNED IN ACCORDANCE WITH ASTM E2112

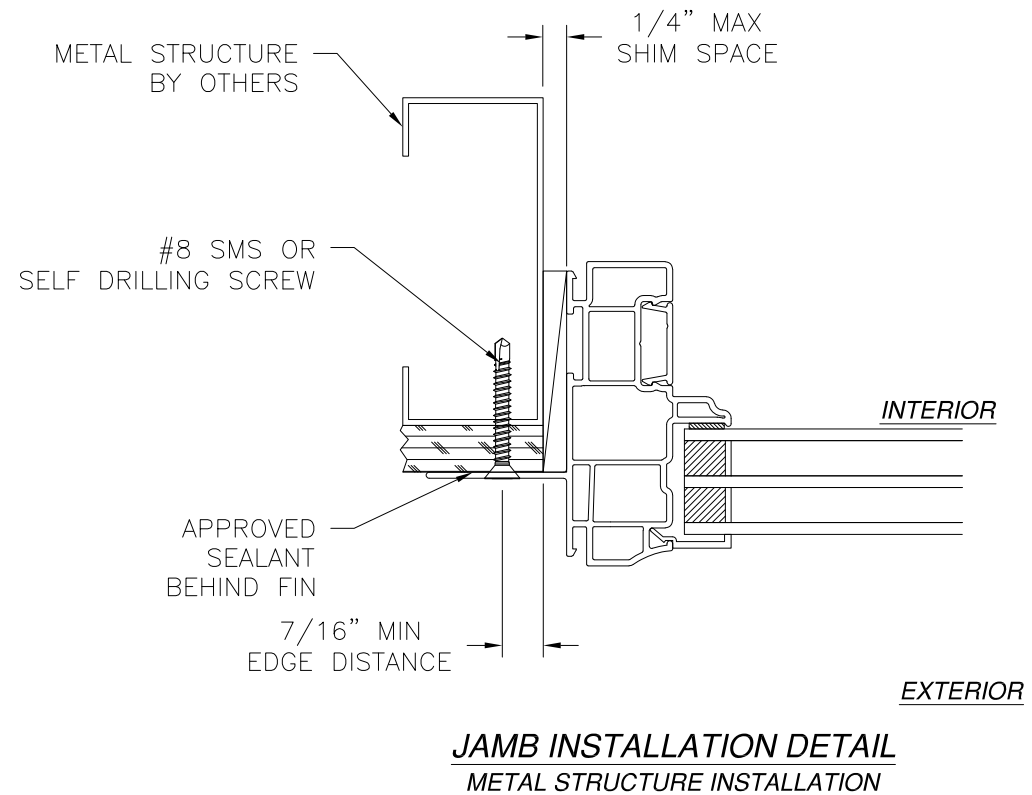
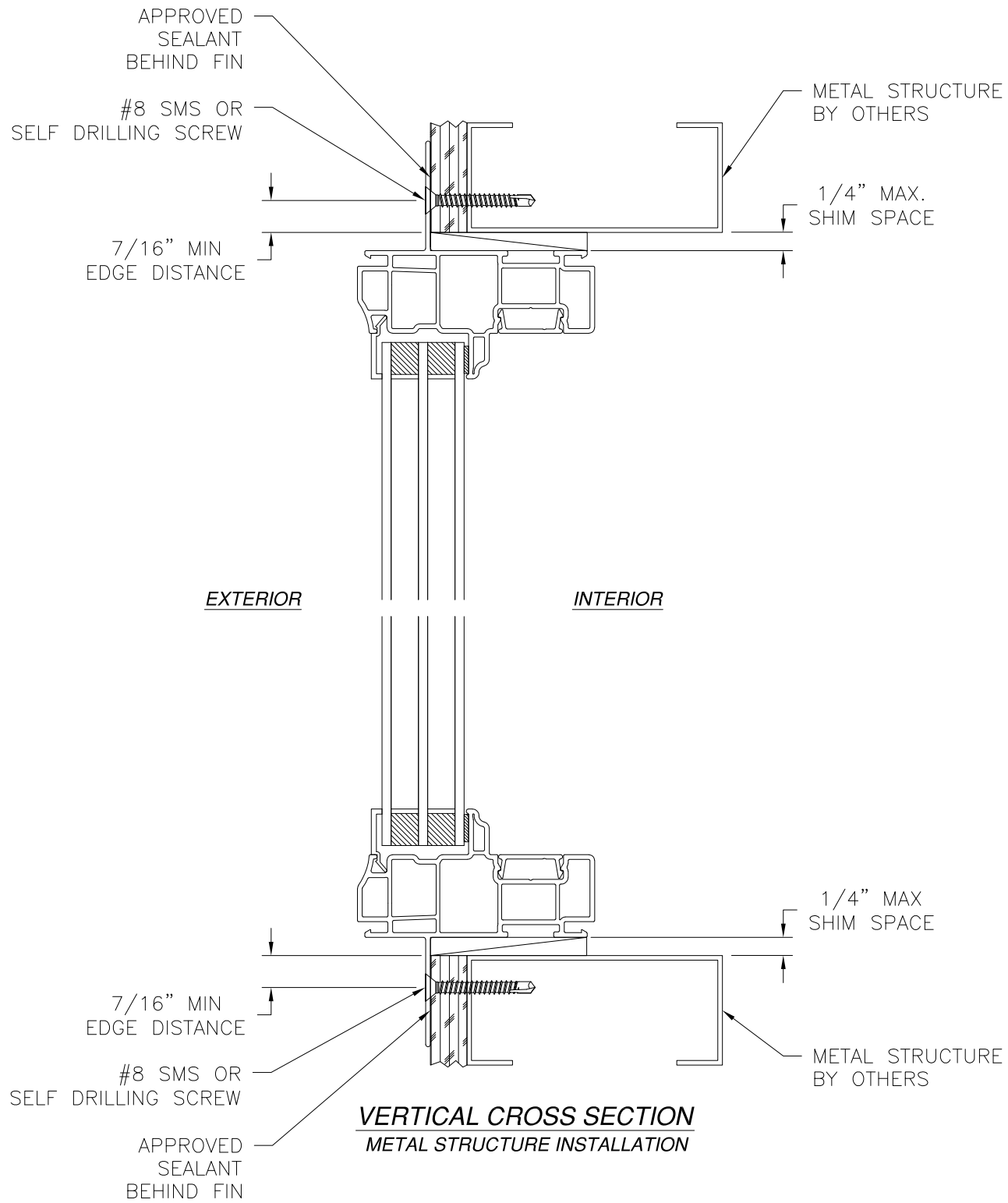
SIGNED: 07/30/2024

<b>WINDOW MART</b> 5760 ALBERT PIKE ROYAL, AR 71968		
8500 PICTURE WINDOW NON-IMPACT FIN INSTALLATION DETAILS		
DRAWN: A.R.	DWG NO. 08-04072	REV -
SCALE NTS	DATE 07/16/2024	SHEET 6 OF 8
L. ROBERTO LOMAS P.E. 208 7th Ave, INDIALANTIC, FL 32903 434-688-0609    rllomas@lrlomaspe.com		



Luis R. Lomas P.E.  
TX No.: 101889

REVISIONS			
REV	DESCRIPTION	DATE	APPROVED



- NOTES:
- INTERIOR AND EXTERIOR FINISHES, BY OTHERS, NOT SHOWN FOR CLARITY.
  - PERIMETER AND JOINT SEALANT BY OTHERS TO BE DESIGNED IN ACCORDANCE WITH ASTM E2112

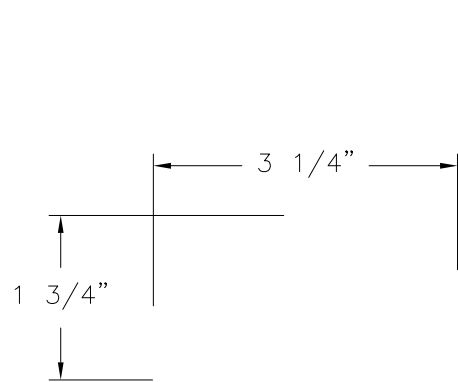
SIGNED: 07/30/2024

WINDOW MART 5760 ALBERT PIKE ROYAL, AR 71968		
8500 PICTURE WINDOW NON-IMPACT FIN INSTALLATION DETAILS		
DRAWN: A.R.	DWG NO. 08-04072	REV -
SCALE NTS	DATE 07/16/2024	SHEET 7 OF 8
L. ROBERTO LOMAS P.E. 208 7th Ave, INDIALANTIC, FL 32903 434-688-0609 rllomas@lrlomaspe.com		

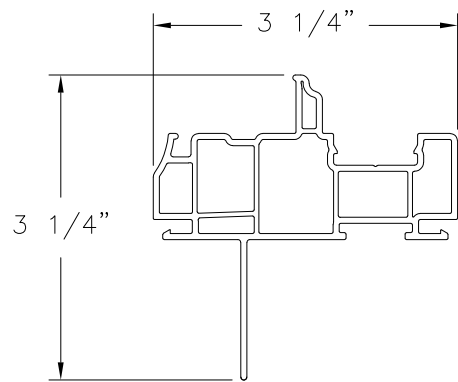


Luis R. Lomas P.E.  
TX No.: 101889

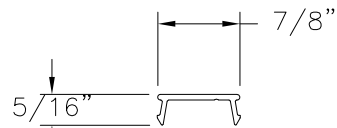
REVISIONS			
REV	DESCRIPTION	DATE	APPROVED



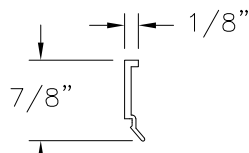
**MAIN FRAME (10401)**  
EXTRUDED VINYL



**MAIN FRAME  
FIN INTALLATION (5927)**  
EXTRUDED VINYL



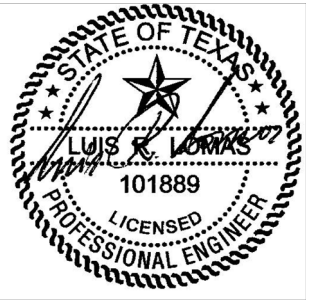
**MAIN FRAME INSERT (10174)**  
EXTRUDED VINYL



**GLAZING BED (5927)**  
EXTRUDED VINYL

SIGNED: 07/30/2024

WINDOW MART 5760 ALBERT PIKE ROYAL, AR 71968		
8500 PICTURE WINDOW NON-IMPACT COMPONENTS		
DRAWN: A.R.	DWG NO. 08-04072	REV -
SCALE NTS	DATE 07/16/2024	SHEET 8 OF 8
L. ROBERTO LOMAS P.E. 208 7th Ave, INDIALANTIC, FL 32903 434-688-0609 rllomas@lrlomaspe.com		



Luis R. Lomas P.E.  
TX No.: 101889