

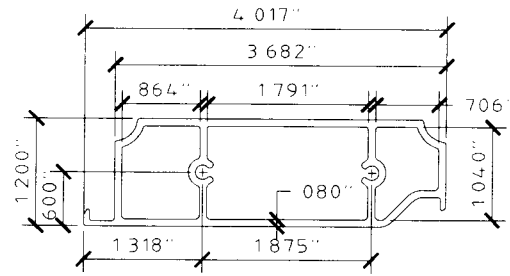
**GENERAL NOTES:**

- THESE INSTALLATION INSTRUCTIONS ARE PART OF A PRODUCT APPROVAL EVALUATION AND SHALL ONLY BE USED IN CONJUNCTION WITH THE EVALUATION REPORT SUBMITTED FOR THE SAME PRODUCT APPROVAL.
- THIS SYSTEM HAS BEEN TESTED AND EVALUATED IN ACCORDANCE WITH THE 2006 INTERNATIONAL BUILDING CODE AND INTERNATIONAL RESIDENTIAL CODE WITH TEXAS REVISIONS EFFECTIVE JANUARY 1, 2008.
- POSITIVE AND NEGATIVE DESIGN PRESSURES CALCULATED FOR USE WITH THIS SYSTEM SHALL BE DETERMINED PER SEPARATE ENGINEERING IN ACCORDANCE WITH THE GOVERNING CODE. PRESSURE REQUIREMENTS SHALL BE LESS THAN OR EQUAL TO THE POSITIVE OR NEGATIVE DESIGN PRESSURE CAPACITY VALUES LISTED HEREIN FOR ANY ASSEMBLY AS SHOWN.
- TESTING WAS CONDUCTED IN ACCORDANCE WITH ASTM E1886-02/E1996-09/E330-02.
- THIS SYSTEM HAS BEEN DESIGNED WITH NO SEPARATION FROM GLAZING REQUIRED FOR ALL WIND ZONES, IN ACCORDANCE WITH ASTM E1996-09. IT IS ACCEPTABLE BY CODE UNLESS OPTIONAL CRITERIA IS INDEPENDENTLY ADOPTED BY THE AUTHORITY HAVING JURISDICTION.
- DESIGN PRESSURES NOTED HEREIN ARE BASED ON MAXIMUM TESTED PRESSURES DIVIDED BY A 1.5 SAFETY FACTOR.
- NO INCREASE IN ALLOWABLE STRESS HAS BEEN USED IN THE DESIGN OF THESE PRODUCTS. WIND LOAD DURATION FACTOR  $C_d = 1.6$  WAS USED FOR WOOD ANCHOR DESIGN.
- DETERMINE THE POSITIVE AND NEGATIVE DESIGN LOADS TO USE WHEN REFERENCING THESE DOCUMENTS IN ACCORDANCE WITH THE GOVERNING CODE AND GOVERNING WIND VELOCITY. FOR WIND LOAD CALCULATIONS IN ACCORDANCE WITH ASCE 7, A DIRECTIONALITY FACTOR OF  $K_d = 0.85$  SHALL BE USED.
- THE SYSTEM DETAILED HEREIN IS GENERIC AND DOES NOT PROVIDE INFORMATION FOR A SPECIFIC SITE.
- PERMIT HOLDER SHALL VERIFY THE ADEQUACY OF THE EXISTING STRUCTURE TO WITHSTAND SUPERIMPOSED LOADS.
- ANCHORS SHALL BE INSTALLED PER MANUFACTURER RECOMMENDATIONS. MINIMUM EMBEDMENT AND EDGE DISTANCE EXCLUDES STUCCO, FOAM, BRICK, AND OTHER WALL FINISHES.
- THESE APPROVAL DOCUMENTS ARE SUITABLE TO BE APPLIED BY THE CONTRACTOR PROVIDED THE CONTRACTOR DOES NOT DEVIATE FROM THE CONDITIONS DETAILED HEREIN AND THE CONTRACTOR VERIFIES THAT THE EXISTING STRUCTURE DOES NOT DEVIATE IN EITHER FORM OR MATERIAL FROM THE STRUCTURAL SUBSTRATES DETAILED HEREIN.
- ANY MODIFICATIONS OR ADDITIONS TO THESE APPROVAL DOCUMENTS WILL VOID THE APPROVAL DOCUMENTS.
- EACH SHUTTER ASSEMBLY SHALL BE PERMANENTLY LABELED WITH THE FOLLOWING MINIMUM INFORMATION:  

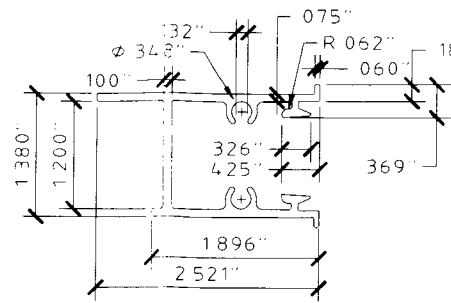
**TOWN & COUNTRY INDUSTRIES**  
**FORT LAUDERDALE, FL**  
**MISSILE LEVEL D - ASTM E1886, E1996 & E330**  
**TDI EVALUATED**
- ALL EXTRUSIONS SHOWN SHALL BE 6063-T6 ALUMINUM ALLOY, U.O.N., WITH A MINIMUM  $F_y$  OF 25 K.S.I.
- ALL BOLTS AND WASHERS (EXCLUDING INSTALLATION) SHALL BE STAINLESS STEEL WITH A MINIMUM TENSILE STRENGTH OF 60 K.S.I., U.O.N. POP RIVETS SHALL BE 1/4"Ø OR 3/16"Ø 5052 ALUM. ALLOY.
- MAXIMUM ALLOWABLE DESIGN PRESSURE IN CLOSED POSITION PROVIDING WIND LOAD & IMPACT RESISTANCE = **+57.2/-66.2** PSF FOR ALL SHUTTER SYSTEM CONFIGURATIONS SHOWN HEREIN.
- MAXIMUM ALLOWABLE DESIGN PRESSURE IN OPEN POSITION = **+/- 28** PSF.
- THIS SHUTTER SYSTEM SHALL NOT BE INSTALLED IN ESSENTIAL FACILITIES AS DEFINED IN ASTM E1996-09.
- SHUTTER ASSEMBLY MUST BE CLOSED AND SECURED AND SHALL NOT BE LEFT IN THE OPEN POSITION IN THE EVENT OF A WIND STORM EVENT.
- ALL STEEL IN CONTACT WITH ALUMINUM SHALL BE PAINTED OR PLATED.

**COLONIAL SHUTTER**

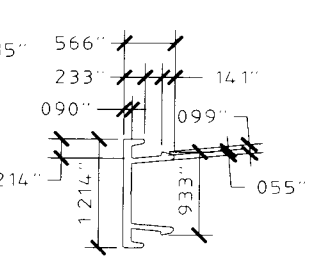
PATENT #8126298



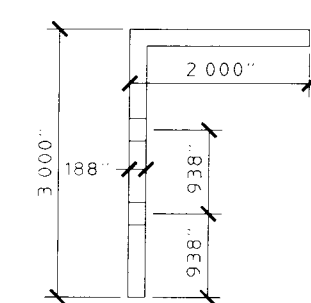
1 MUNTIN  
SCALE HALF SIZE



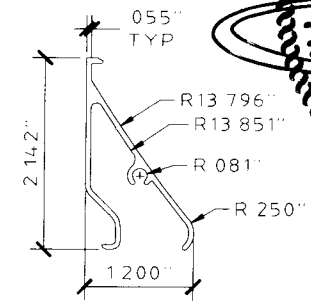
2 JAMB  
SCALE HALF SIZE



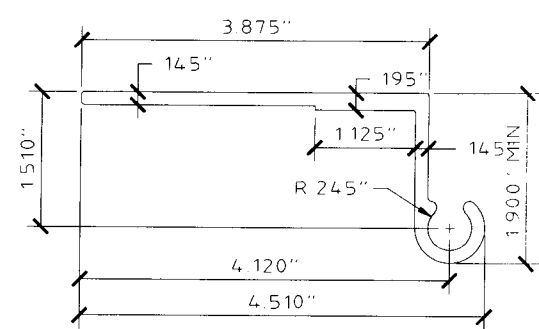
3 JAMB SNAP  
SCALE HALF SIZE



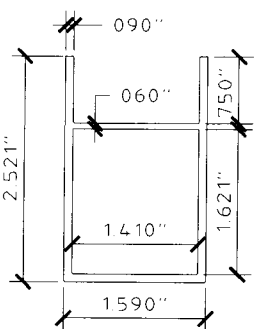
4 4\"/>SCALE HALF SIZE



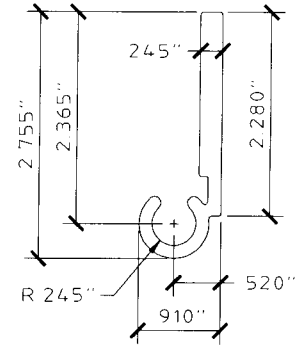
5 COLONIAL BLADE  
SCALE HALF SIZE



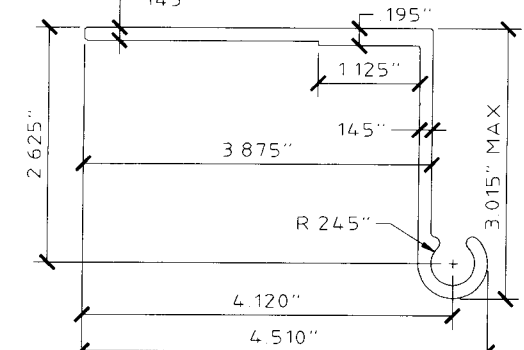
6 WALL HINGE  
SCALE HALF SIZE



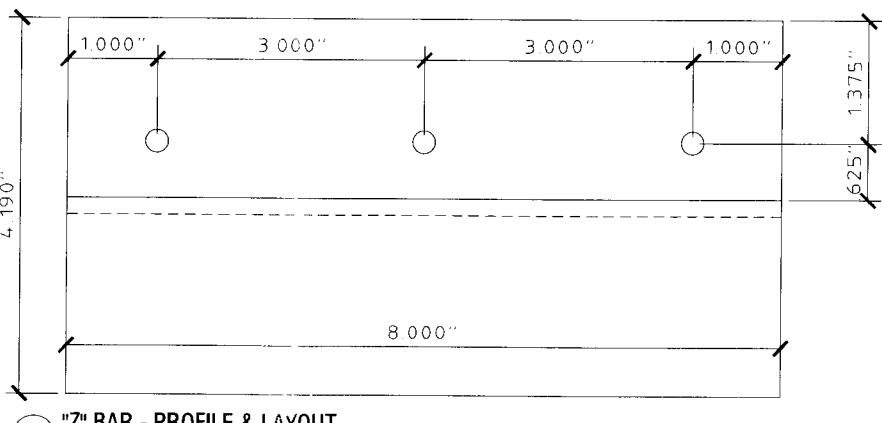
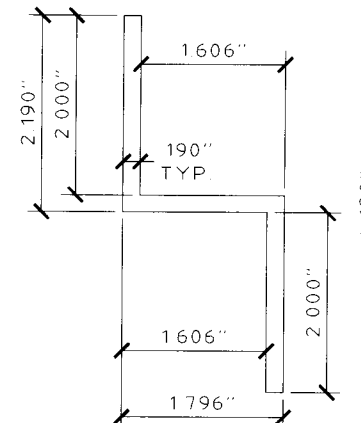
7 HEADER / SILL  
SCALE HALF SIZE



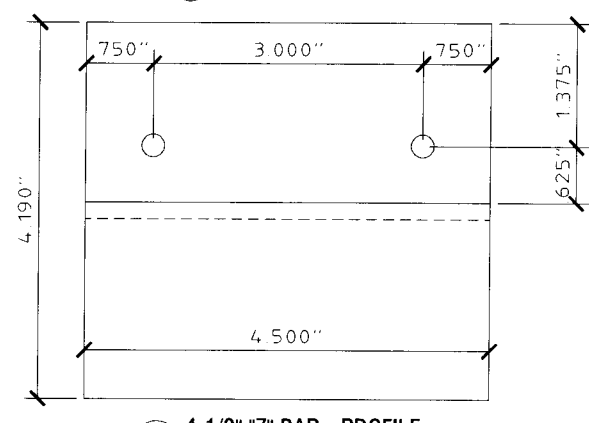
9 FLAT HINGE  
SCALE HALF SIZE



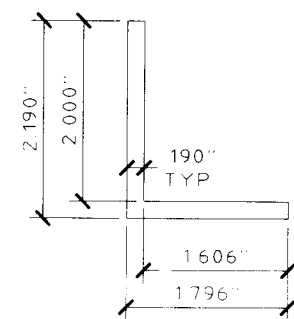
8 BUILD-OUT WALL HINGE  
SCALE HALF SIZE



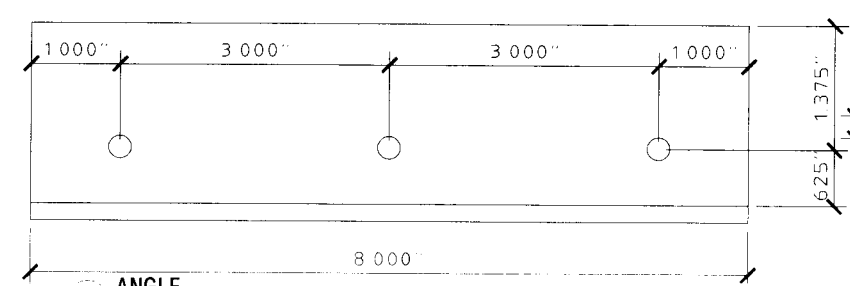
10 \"Z\" BAR - PROFILE & LAYOUT  
SCALE HALF SIZE



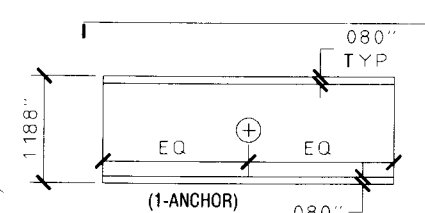
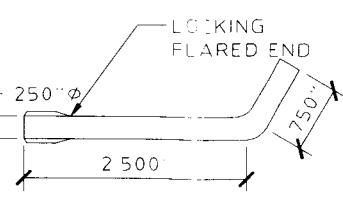
10A 4-1/2\"/>SCALE HALF SIZE



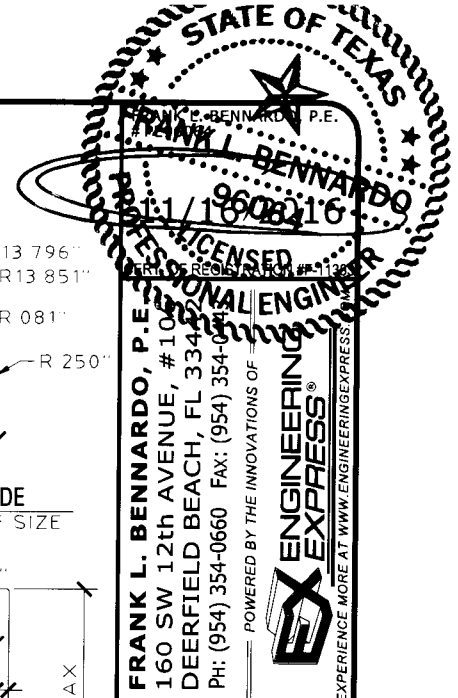
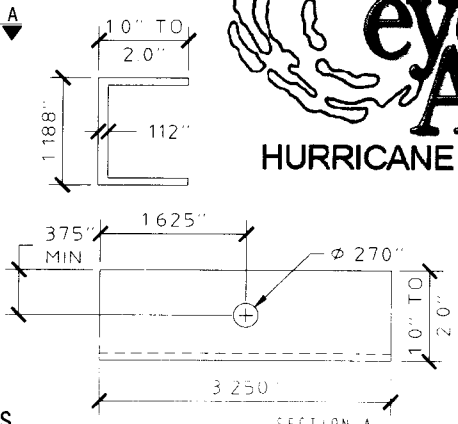
11 ANGLE  
SCALE HALF SIZE



12 L-PIN - 1/4\"/>SCALE HALF SIZE



13 \"C\" CLIPS  
SCALE HALF SIZE



**Town & Country INDUSTRIES**  
 Wholesale Aluminum and Building Products  
 400 WEST MCNAB ROAD  
 FT. LAUDERDALE, FL 33309

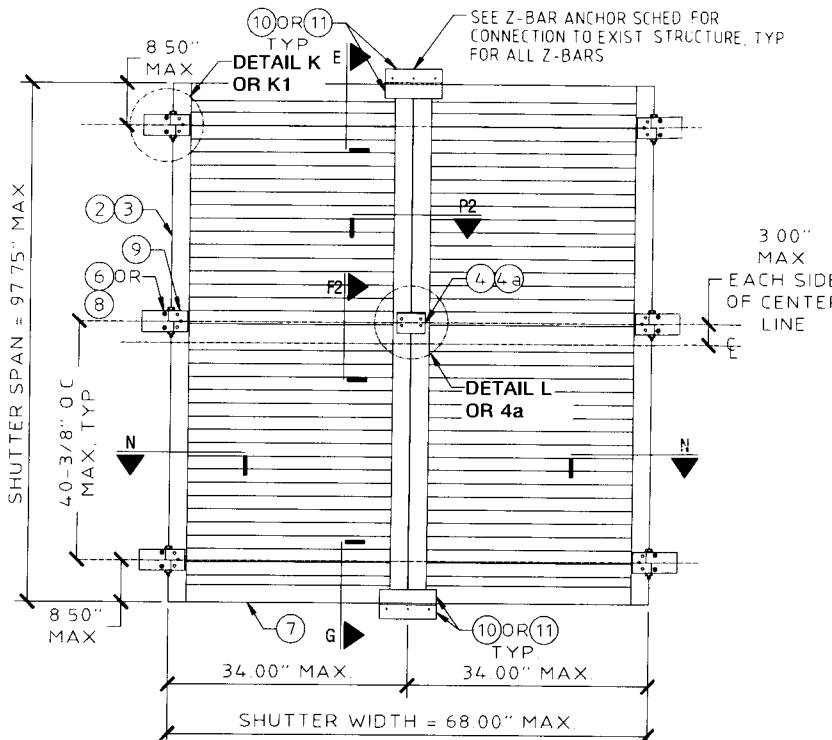
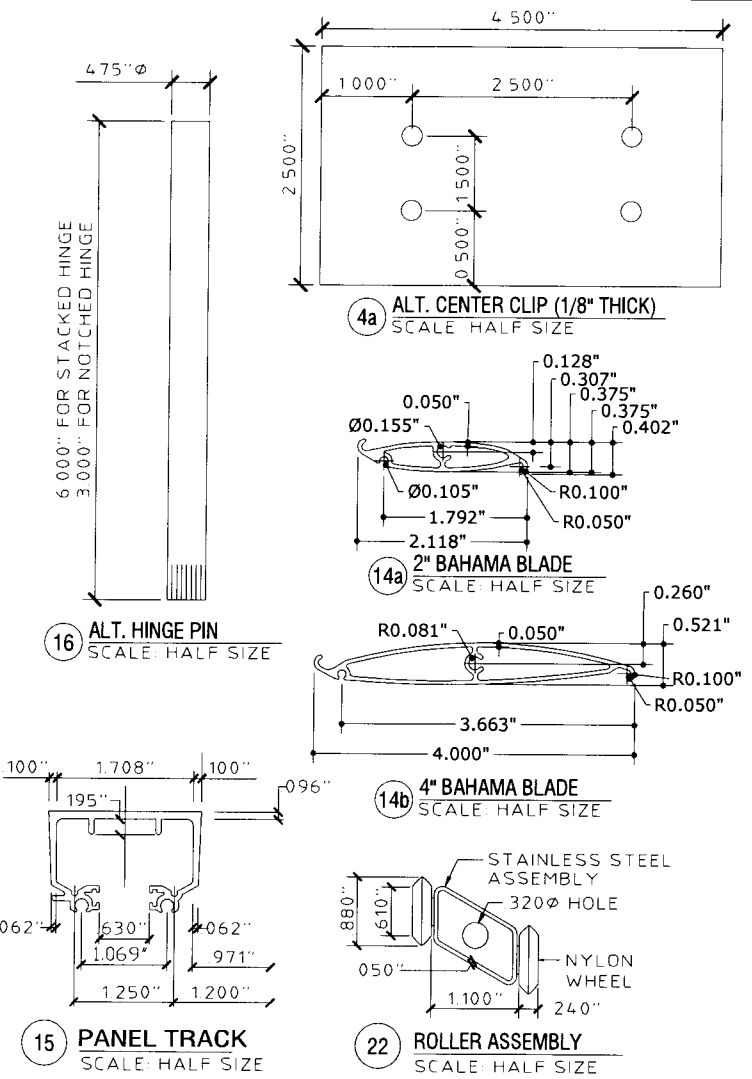
DRWN	CHKD	DATE
KL	FLB	06/08/10
RWN	FLB	10/27/16

COPYRIGHT ENGINEERING EXPRESS  
**15-2341**  
 SCALE: \_\_\_\_\_  
 PAGE DESCRIPTION:  
**1**

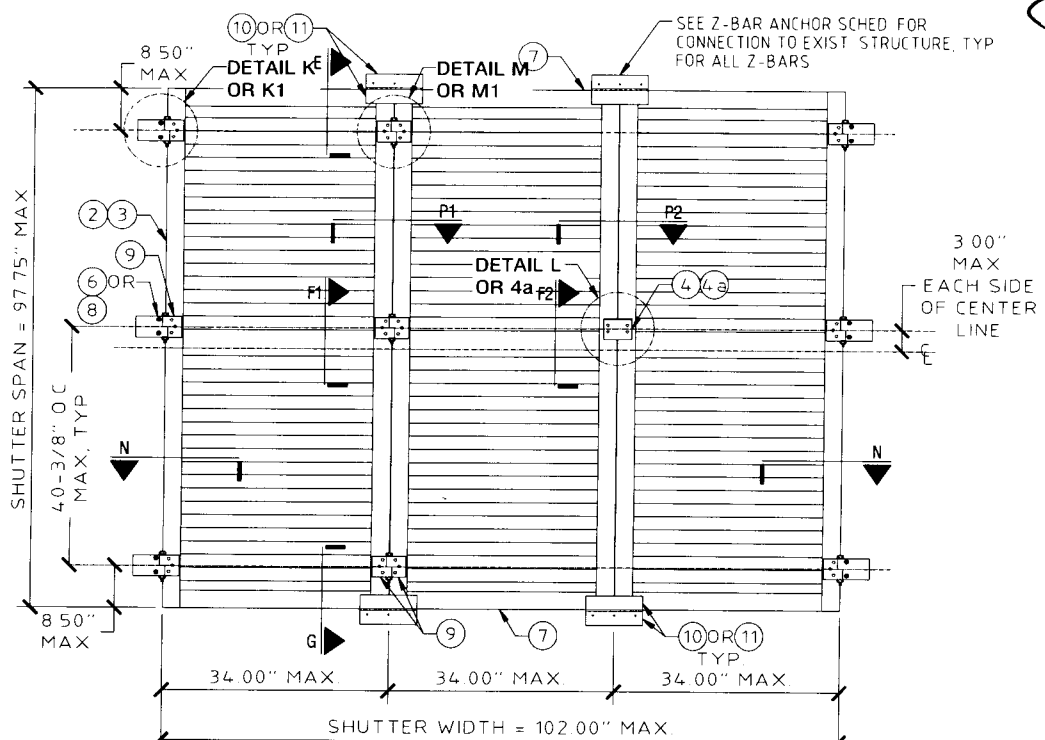
V:\Projects\15-2341 Fullview Colonial Shutter Hybrid Non-HVHZ - FSA - Update FL16219.1 for 2-Project\WP\Revision\_Add 4in Blade (9-215-2341) - Colonial Shutter Hybrid - (TDI).dwg 11/16/2016 - 1:37pm rckn

V:\Projects\15-2341 Fullview Colonial Shutter Hybrid Non-HVHZ - FSA - Update FL16219.1 for 2-Project\WP\Revision - Add 4in Blade (9-215-2341f - Colonial Shutter Hybrid - (TDI).dwg 11/16/2016 - 1:37pm rickn

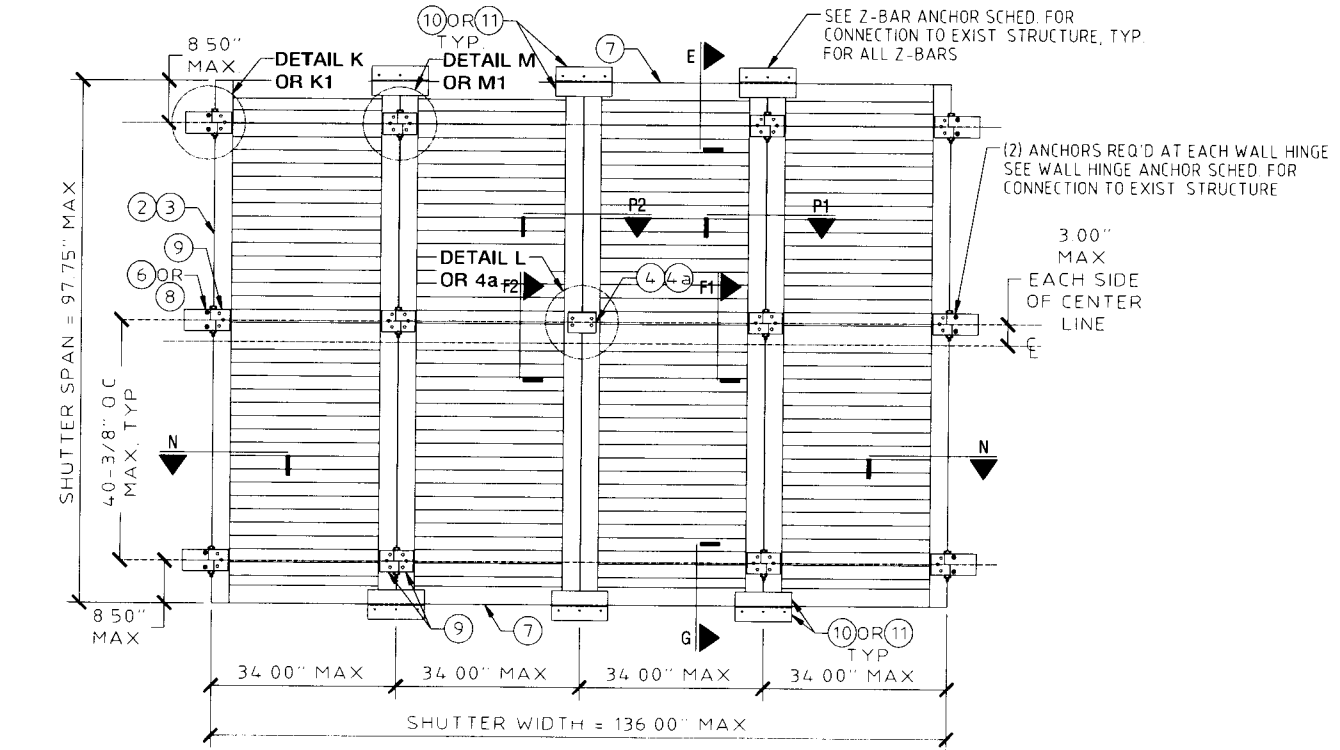
**COLONIAL SHUTTER**



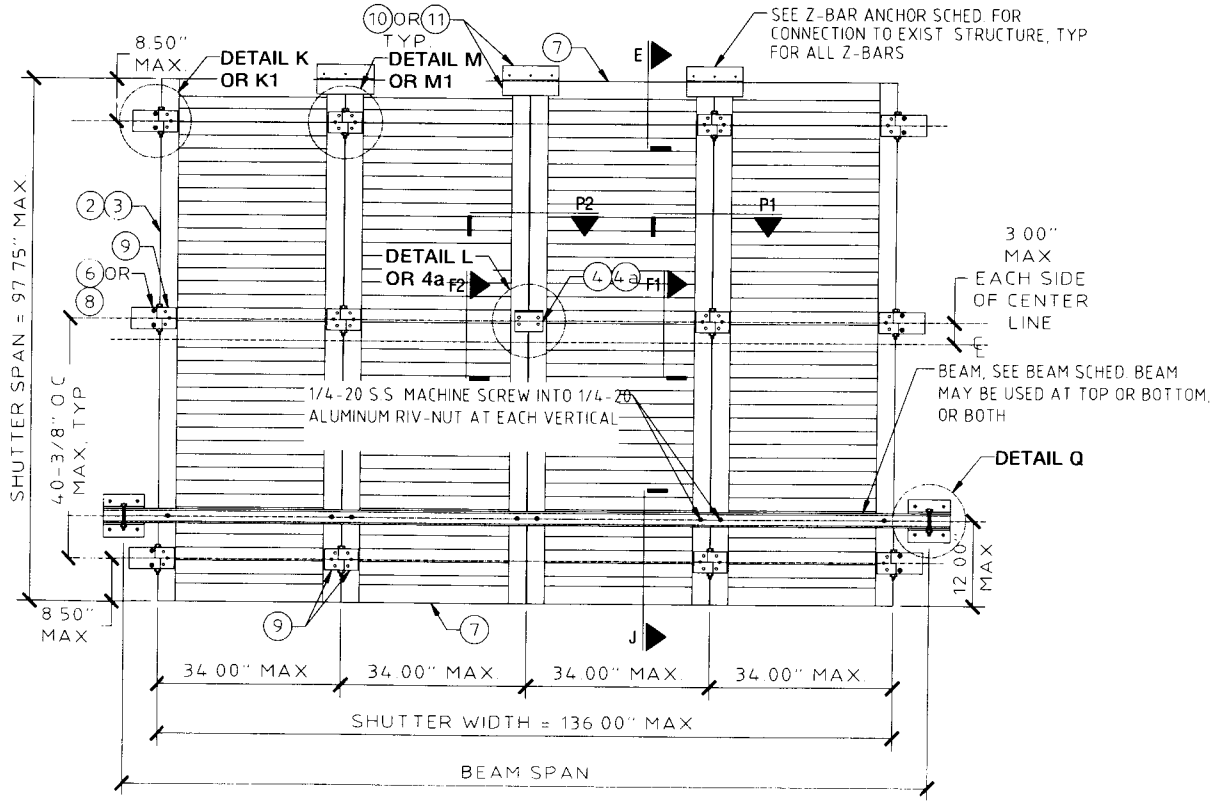
**(A) TYPICAL ELEVATION 2 PANELS**  
SCALE: 1/2" = 1'-0"



**(B) TYPICAL ELEVATION 3 PANELS**  
SCALE: 1/2" = 1'-0"



**(C) TYPICAL ELEVATION 4 PANELS**  
SCALE: 1/2" = 1'-0"



**(D) TYPICAL ELEVATION WITH BEAM (2, 3, OR 4 PANELS)**  
SCALE: 1/2" = 1'-0"

STATE OF TEXAS  
FRANK L. BENNARDO, P.E.  
#PE96064  
FRANK L. BENNARDO  
11717 67th Avenue  
96064  
REGISTERED PROFESSIONAL ENGINEER  
POWERED BY THE INNOVATIONS  
EXPERIENCE MORE AT WWW.ENGINEERINGEXPRESS.COM

**Town & Country**  
INDUSTRIES  
Wholesale Aluminum and Building Products  
A Division of H&C Supply Co., Inc.  
400 WEST MCNAB ROAD  
FT. LAUDERDALE, FL 33309

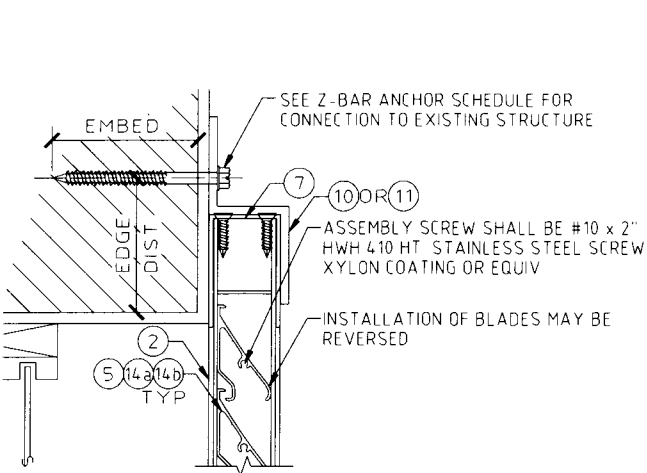
REMARKS	DRWN	CHKD	DATE
INIT ISSUE	KL	FLB	06/08/10
REV	RWN	FLB	10/27/16

THIS DOCUMENT IS THE PROPERTY OF ENGINEERING EXPRESS AND SHALL NOT BE REPRODUCED IN WHOLE OR PART WITHOUT WRITTEN CONSENT OF THE CERTIFYING ENGINEER. ANY REUSE OF THIS DOCUMENT ARE NOT PERMITTED AND INVALID OUR CERTIFICATION.

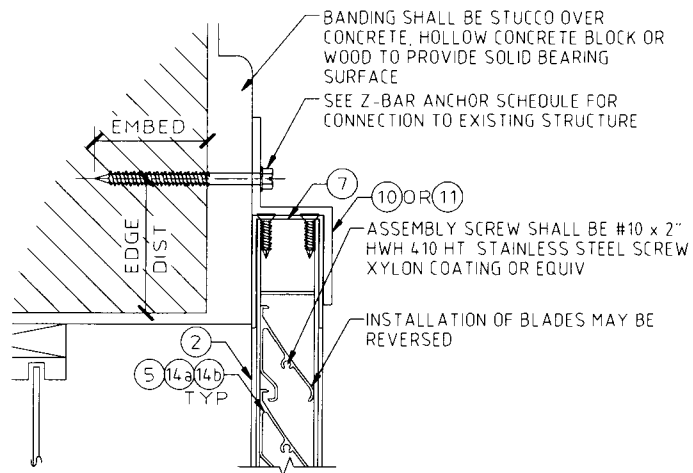
COPYRIGHT ENGINEERING EXPRESS

15-2341  
SCALE:  
PAGE DESCRIPTION:  
2

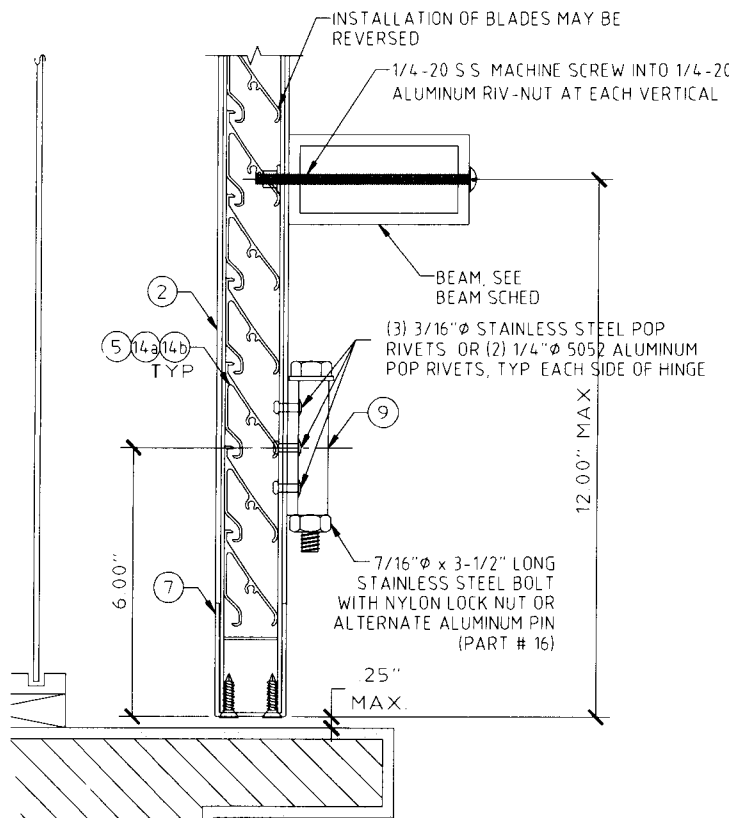
11/16/2016 - 1:37pm rickn V:\Projects\15-2341 Fullview Colonial Shutter Hybrid Non-HVHZ - FSA - Update FL16219.1 for 2-Project\WP1\Revision\_Add 4in Blade (9-215-2341 - Colonial Shutter Hybrid - (TD).dwg



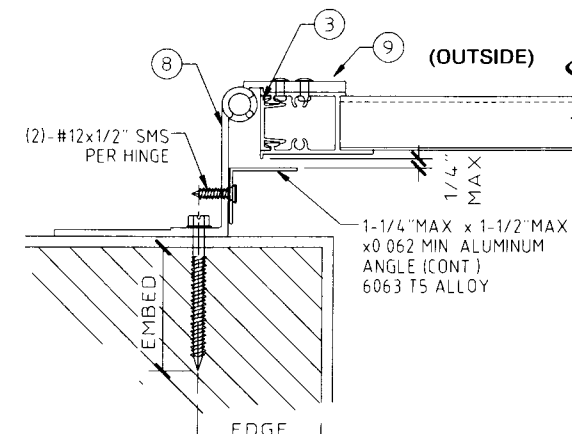
**E1 TYPICAL TOP WALL MOUNT**  
SCALE 3" = 1'-0"



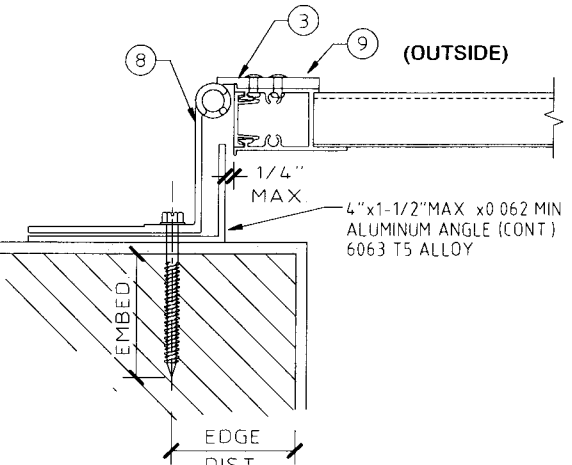
**E2 ALTERNATE TOP WALL MOUNT**  
SCALE 3" = 1'-0"



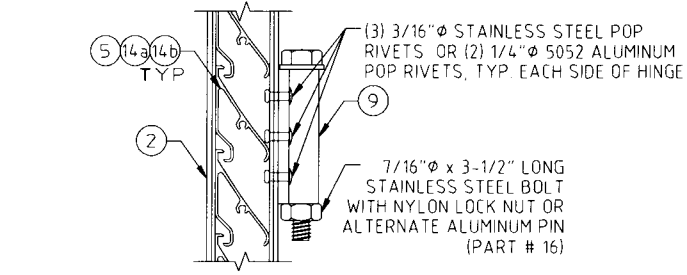
**J TYPICAL TRAP MOUNT**  
SCALE 3" = 1'-0"



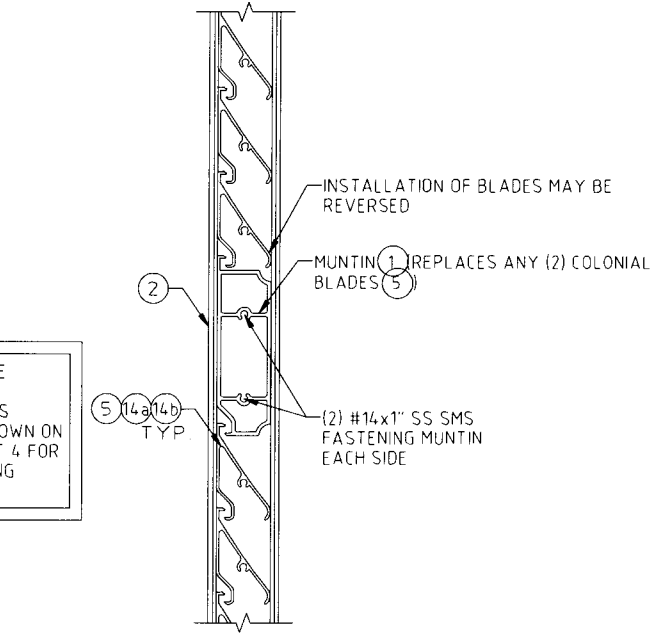
**K SIDE CLOSURE DETAIL**  
SCALE 3" = 1'-0"



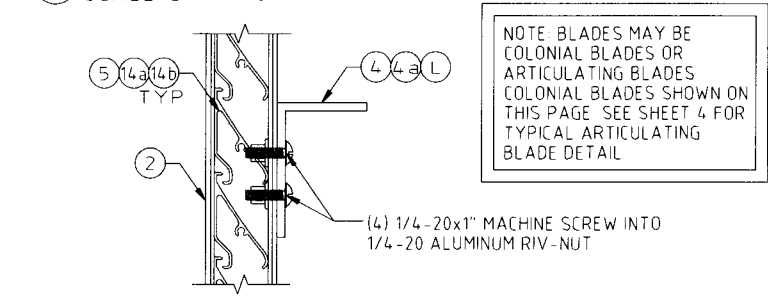
**Ka ALTERNATE SIDE CLOSURE DETAIL**  
SCALE 3" = 1'-0"



**F1 TYPICAL PANEL HINGE CONNECTION**  
SCALE 3" = 1'-0"

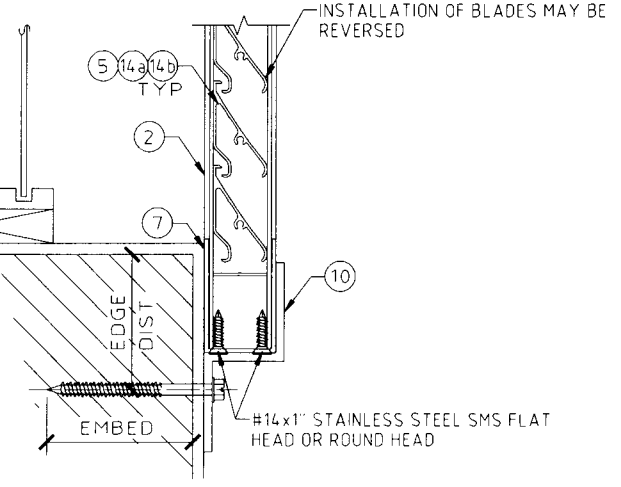


**H ALTERNATE BLADE**  
SCALE 3" = 1'-0"

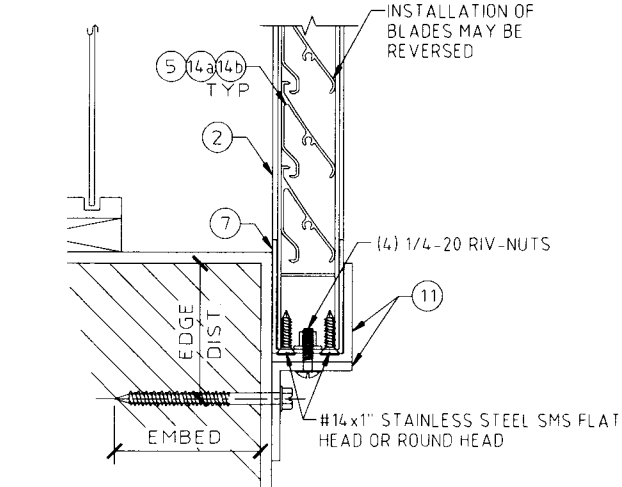


**F2 TYPICAL CENTER CLIP CONNECTION**  
SCALE 3" = 1'-0"

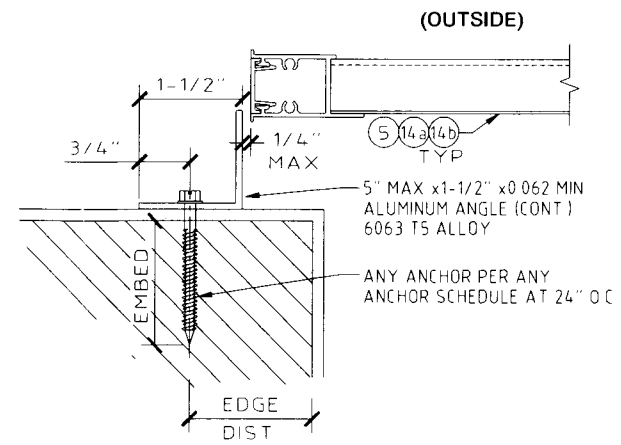
NOTE: BLADES MAY BE COLONIAL BLADES OR ARTICULATING BLADES. COLONIAL BLADES SHOWN ON THIS PAGE. SEE SHEET 4 FOR TYPICAL ARTICULATING BLADE DETAIL.



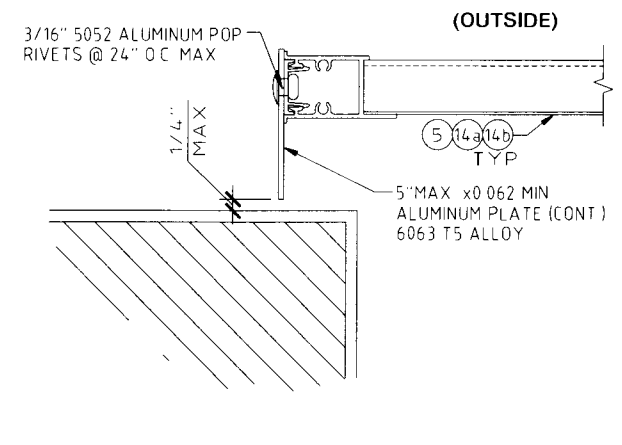
**G1 TYPICAL BOTTOM WALL MOUNT**  
SCALE 3" = 1'-0"



**G2 ALTERNATE WALL MOUNT**  
SCALE 3" = 1'-0"



**Kb SLIDING PANEL SIDE CLOSURE DETAIL**  
NTS



**Kc SLIDING PANEL SIDE ALTERNATE CLOSURE DETAIL**  
NTS

STATE OF TEXAS  
FRANK L. BENNARDO, P.E.  
#PE96064  
11/9/2016  
FRANK L. BENNARDO, P.E.  
160 SW 12th AVENUE, #100  
DEERFIELD BEACH, FL 33442  
Ph: (954) 354-0660 Fax: (954) 354-0661  
POWERED BY THE INNOVATIONS OF  
ENGINEERING EXPRESS  
EXPERIENCE MORE AT WWW.ENGINEERINGEXPRESS.COM

**Town & Country**  
INDUSTRIES  
Wholesale Aluminum and Building Products  
A Division of ABC Supply Co., Inc.  
400 WEST MCNAB ROAD  
FT. LAUDERDALE, FL 33309

DRWN	CHKD	DATE
KL	FLB	06/08/10
RWN	FLB	10/27/16

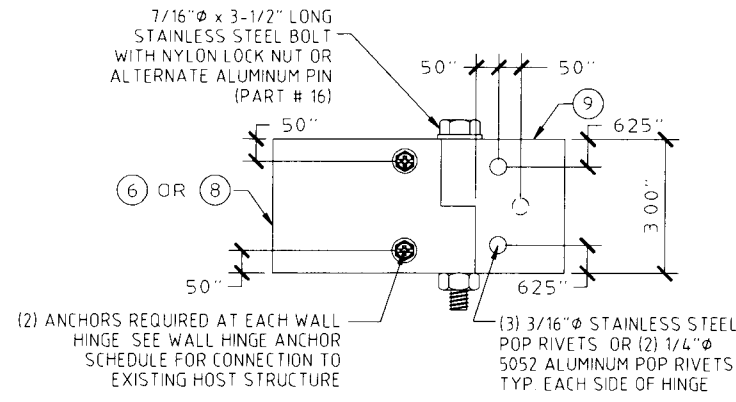
REMARKS  
INITIALS  
REV

THIS DOCUMENT IS THE PROPERTY OF ENGINEERING EXPRESS AND SHALL NOT BE REPRODUCED IN WHOLE OR PART WITHOUT WRITTEN CONSENT OF THE CERTIFYING ENGINEER. ANY REVISIONS OR OTHER MARKINGS TO THIS DOCUMENT ARE NOT PERMITTED AND INVALIDATE OUR CERTIFICATION.

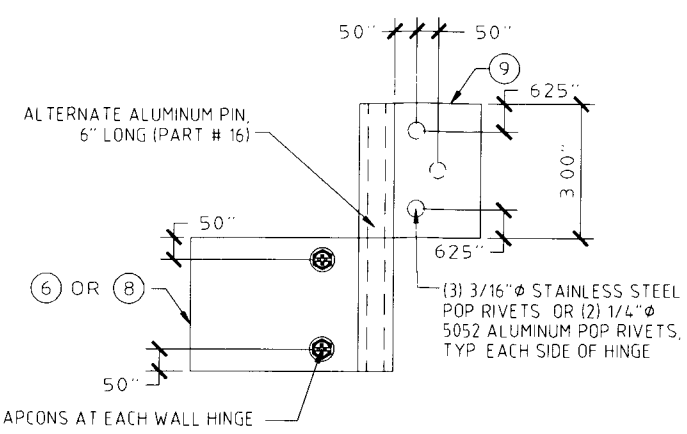
COPYRIGHT ENGINEERING EXPRESS

15-2341  
SCALE:  
PAGE DESCRIPTION:

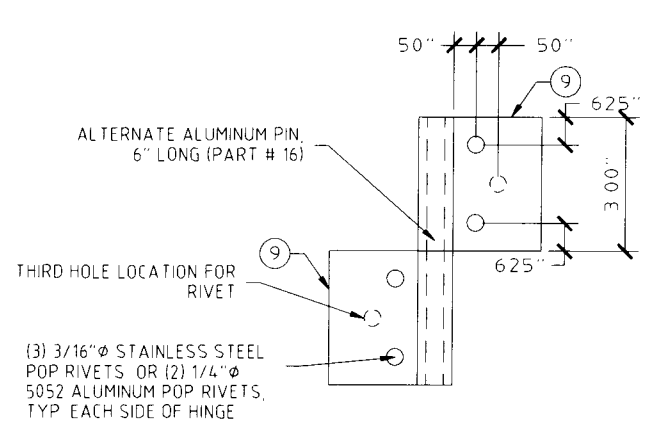
11/16/2016 - 1:37pm rickn V:\Projects\15-2341 Fullview Colonial Shutter Hybrid Non-HVHZ - FSA - Update FL16219.1 for 2-Project\WP\Revision - Add 4th Blade (9-215-2341f - Colonial Shutter Hybrid - (TD))\dwg



**(K) TYPICAL WALL HINGE**  
SCALE 3" = 1'-0"



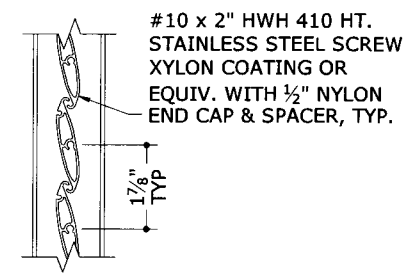
**(K1) ALTERNATE STACKED WALL HINGE**  
SCALE 3" = 1'-0"



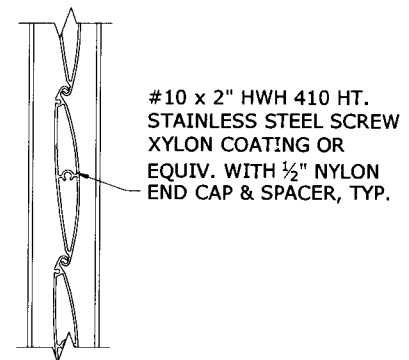
**(M1) ALTERNATE STACKED PANEL HINGE**  
SCALE 3" = 1'-0"

**WALL HINGE ANCHOR SCHEDULE:**

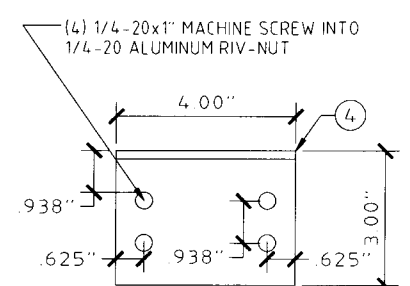
- TO 3192 PSI MIN. CONCRETE:**
- 1/4" ITW SS TAPCON W/ 1 3/4" MIN. EMBEDMENT AND 2-1/2" MIN. EDGE DISTANCE.
  - 5/16" ITW TAPCON XL W/ 1-3/4" MIN. EMBEDMENT AND 2-1/2" MIN. EDGE DISTANCE.
- TO GROUT-FILLED CONCRETE BLOCK:**
- 1/4" ELCO ULTRACON W/ 2-1/4" MIN. EMBEDMENT AND 2-1/2" MIN. EDGE DISTANCE.
  - 5/16" ITW TAPCON XL W/ 1-3/4" MIN. EMBEDMENT AND 4" MIN. EDGE DISTANCE.
- TO G=0.42 MIN. WOOD HOST STRUCTURE:**
- 1/4" LAG SCREWS WITH 1-1/2" MIN. THREAD PENETRATION AND 3/4" MIN. EDGE DISTANCE.
  - #14 WOOD SCREW OR SMS W/ 1-1/2" MIN. THREAD PENETRATION AND 3/4" MIN. EDGE DISTANCE.



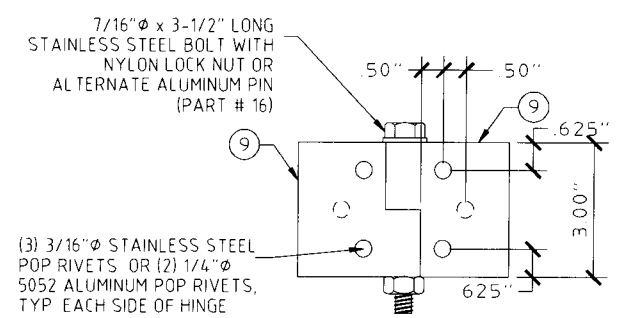
**(BH1) TYPICAL 2" ARTICULATING LOUVER ATTACHMENT**  
SCALE: N.T.S.



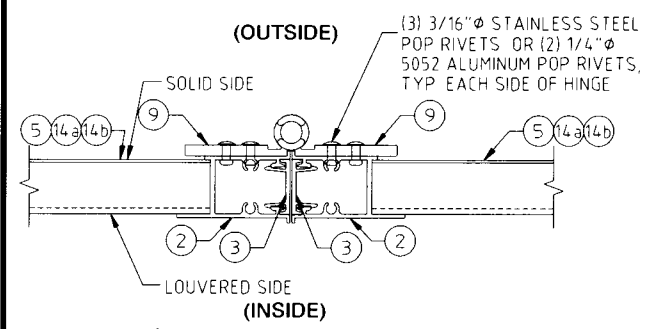
**(BH2) TYPICAL 4" ARTICULATING LOUVER ATTACHMENT**  
SCALE: N.T.S.



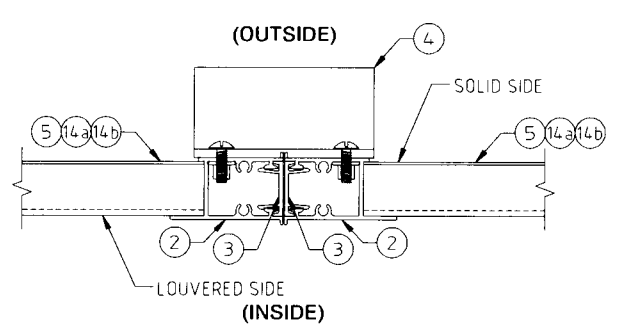
**(L) TYPICAL CENTER CLIP**  
SCALE 3" = 1'-0"



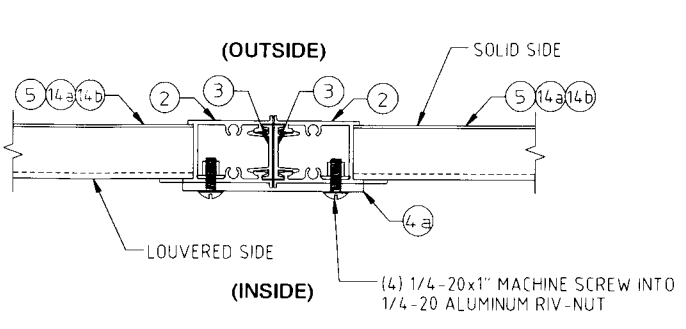
**(M) TYPICAL PANEL HINGE**  
SCALE 3" = 1'-0"



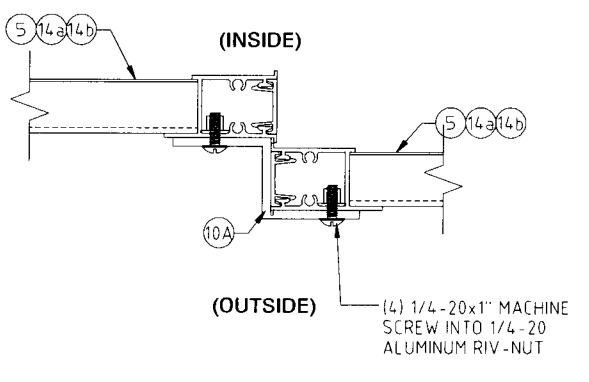
**(P1) TYPICAL PANEL HINGE CONNECTION**  
SCALE 3" = 1'-0"



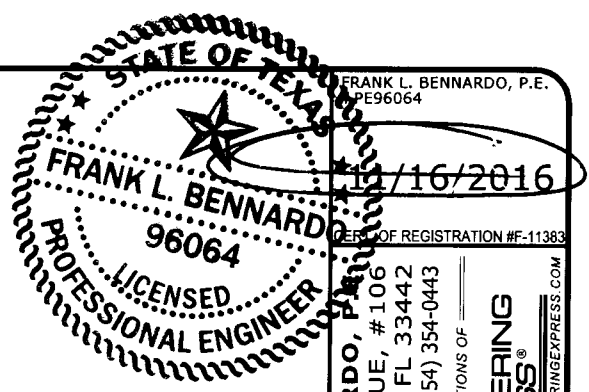
**(P2) TYPICAL CENTER CLIP CONNECTION**  
SCALE 3" = 1'-0"



**(P2) ALTERNATE CENTER CLIP CONNECTION**  
SCALE 3" = 1'-0"



**(L1) SLIDING PANEL OFFSET CLIP**  
N.T.S.



FRANK L. BENNARDO, P.E.  
 PE96064  
 11/16/2016  
 STATE OF TEXAS  
 FRANK L. BENNARDO  
 96064  
 LICENSED PROFESSIONAL ENGINEER  
 FRANK L. BENNARDO, P.E.  
 160 SW 12th AVENUE, #106  
 DEERFIELD BEACH, FL 33442  
 Ph: (954) 354-0660 FAX: (954) 354-0443  
 POWERED BY THE INNOVATIONS OF  
**ENGINEERING EXPRESS**  
 EXPERIENCE MORE AT WWW.ENGINEERINGEXPRESS.COM

**Town & Country INDUSTRIES**  
 Wholesale Aluminum and Building Products  
 A Division of ACO Supply Co., Inc.  
 400 WEST MCNAB ROAD  
 FT. LAUDERDALE, FL 33309

DRWN	CHKD	DATE
KL	FLB	06/08/10
RWN	FLB	10/27/16

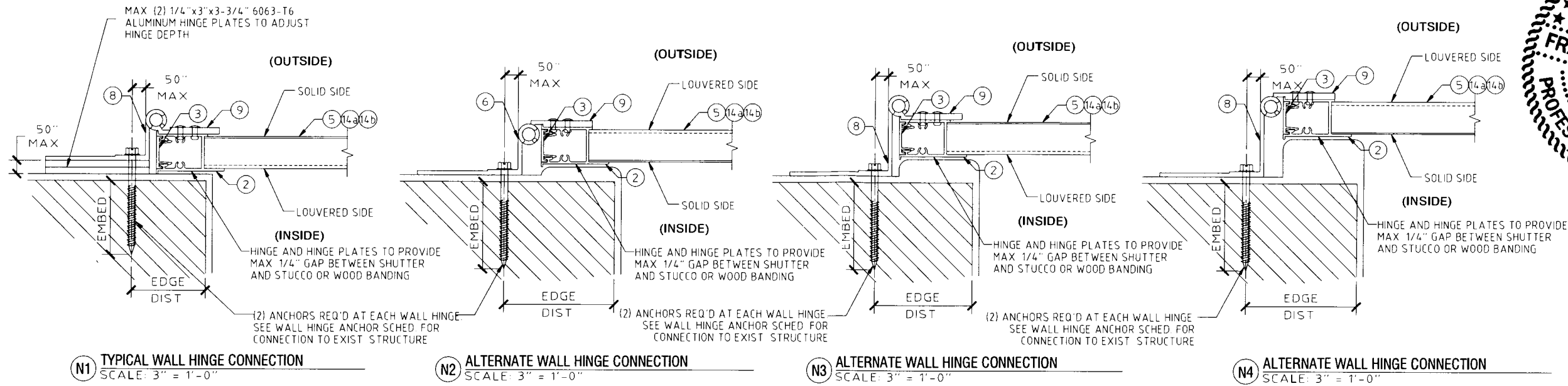
REMARKS: INIT ISSUE  
 REV:

THIS DOCUMENT IS THE PROPERTY OF ENGINEERING EXPRESS AND SHALL NOT BE REPRODUCED IN WHOLE OR PART WITHOUT WRITTEN CONSENT OF THE CERTIFYING ENGINEER. ANY REPRODUCTION OR TRANSMISSION OF THIS DOCUMENT ARE NOT PERMITTED AND INVALIDATE OUR CERTIFICATION.

COPYRIGHT ENGINEERING EXPRESS

15-2341  
 SCALE: -  
 PAGE DESCRIPTION:  
 4 OF 8

11/16/2016 - 1:37pm rickn V:\Projects\15-2341 Fullview Colonial Shutter Hybrid Non-HVHZ - FSA - Update FL16219.1 for 2-Project\WP\Revision\_Add 4in Blade (9-215-2341 - Colonial Shutter Hybrid - (TD).dwg



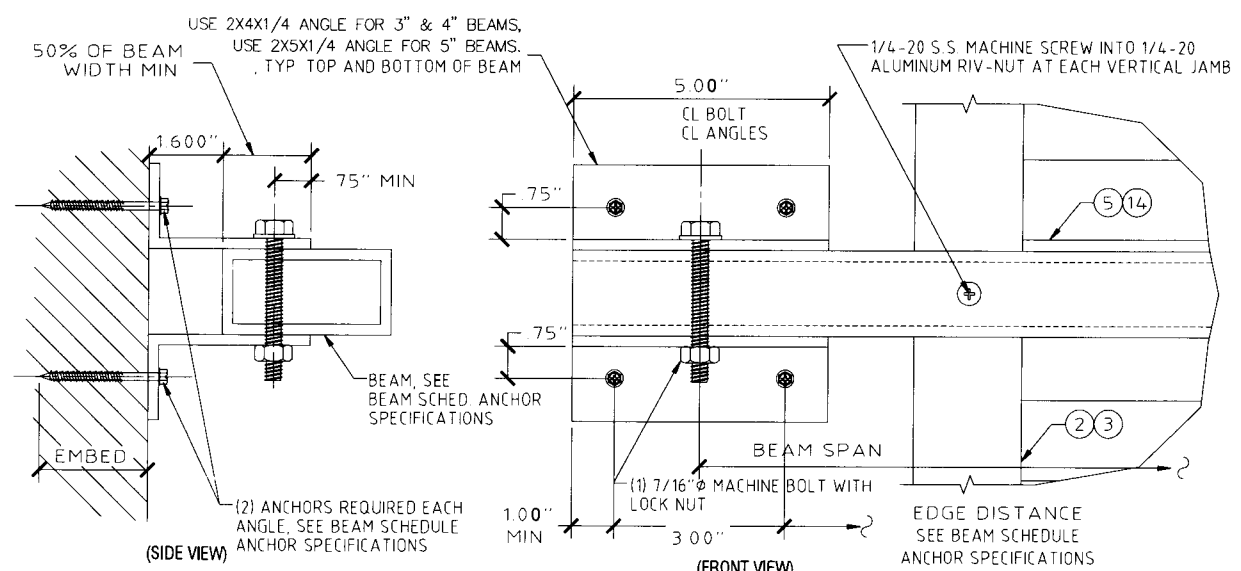
**N1** TYPICAL WALL HINGE CONNECTION SCALE: 3" = 1'-0"  
**N2** ALTERNATE WALL HINGE CONNECTION SCALE: 3" = 1'-0"  
**N3** ALTERNATE WALL HINGE CONNECTION SCALE: 3" = 1'-0"  
**N4** ALTERNATE WALL HINGE CONNECTION SCALE: 3" = 1'-0"

**BEAM SCHEDULE**

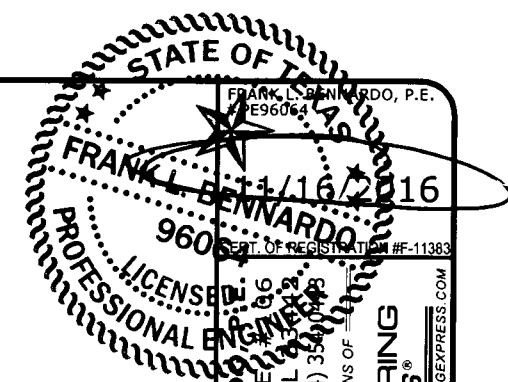
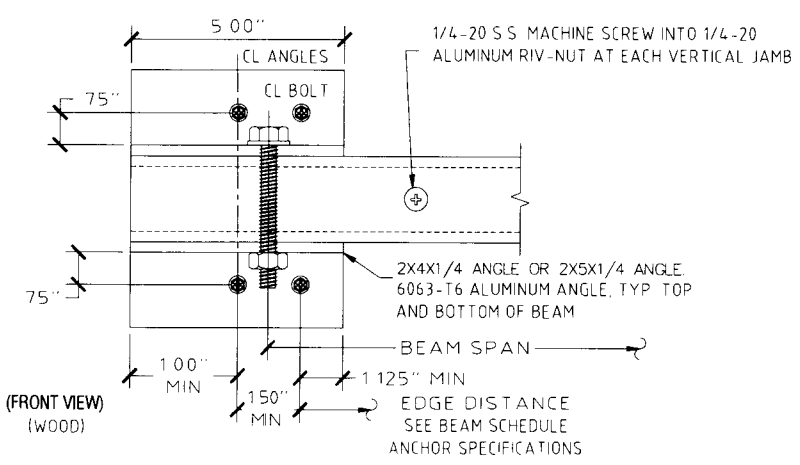
BEAM SIZE	SHUTTER SPAN	BEAM SPAN	WALL BRACKET ANCHOR TYPES		
			CONCRETE (3323 PSI MIN)	HOLLOW CONCRETE BLOCK	WOOD (G=0.42 MIN.)
2"x3"x1/8" (6063-T6)	8'-1.75"	6'-0"	A, B, C	A, B, C	B, C
	6'-8"	6'-8"	A, B, C	A, B, C	B, C
	5'-10"	7'-0"	A, B, C	A, B, C	B, C
2"x4"x1/8" (6063-T6)	8'-1.75"	7'-5"	A, B, C	A, C	B, C
	6'-8"	8'-1"	A, B, C	A, C	B, C
	5'-10"	8'-6"	A, B, C	A, B, C	B, C
2"x5"x1/8" (6063-T6)	8'-1.75"	8'-8"	A, B, C	A, C	B, C
	6'-8"	9'-5"	A, B, C	A, C	B, C
	5'-10"	9'-11"	A, B, C	A, C	B, C
2"x4"x1/4" (6061-T6)	8'-1.75"	11'-3"	A, B, C	C	B, C
	6'-8"	12'-2"	A, B, C	C	B, C
	5'-10"	12'-6"	A, B, C	A, C	B, C

**ANCHOR TYPES FOR USE WITH BEAM SCHEDULE, (4) ANCHORS PER BEAM END**

- A. 1/4" ALL POINTS SOLID-SET ANCHORS  
 FOR CONCRETE: 7/8" MIN. EMBEDMENT, 3" MIN. EDGE DISTANCE, AND 3" MIN. SPACING.  
 FOR HOLLOW CONCRETE BLOCK: 7/8" MIN. EMBEDMENT, 3" MIN. EDGE DISTANCE, AND 3" MIN. SPACING.
- B. 1/4" ELCO MALE/FEMALE PANELMATE  
 FOR CONCRETE: 2" MIN. EMBEDMENT, 3" MIN. EDGE DISTANCE, AND 3" MIN. SPACING.  
 FOR HOLLOW CONCRETE BLOCK: 1-1/4" MIN. EMBEDMENT, 3" MIN. EDGE DISTANCE, AND 3" MIN. SPACING.  
 FOR WOOD: 1-7/8" MIN. EMBEDMENT, 3/4" MIN. EDGE DISTANCE, 1.5" MIN. SPACING.
- C. 1/4" ITW TAPCON SG  
 FOR CONCRETE: 1-3/4" MIN. EMBEDMENT, 2-1/2" MIN. EDGE DISTANCE, 3" MIN. SPACING.  
 FOR HOLLOW CONCRETE BLOCK: 1-1/4" MIN. EMBEDMENT, 2-1/2" MIN. EDGE DISTANCE, 3" MIN. SPACING.  
 FOR WOOD: 1-1/2" MIN. EMBEDMENT, 3/4" MIN. EDGE DISTANCE, 1.5" MIN. SPACING.



**Q** TYPICAL WALL BRACKET CONNECTION DETAIL SCALE: 3" = 1'-0"



**FRANK L. BENNARDO, P.E.**  
 160 SW 12th AVENUE, SUITE 206  
 DEERFIELD BEACH, FL 33442  
 Ph: (954) 354-0660 FAX: (954) 354-0661  
 POWERED BY THE INNOVATIONS OF  
**ENGINEERING EXPRESS**  
 EXPERIENCE MORE AT WWW.ENGINEERINGEXPRESS.COM

**Town & Country INDUSTRIES**  
 Wholesale Aluminum and Building Products  
 A Division of ACC Supply Co., Inc.  
 400 WEST MCNAB ROAD  
 FT. LAUDERDALE, FL 33309

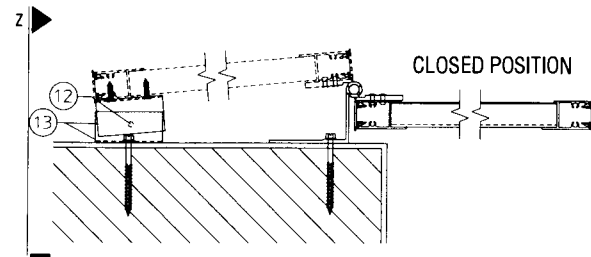
DRWN	CHKD	DATE	INIT	FLB	FLB	FLB	FLB
KL	KL	06/08/10					
REV	REV	10/27/16					

REMARKS: THIS DOCUMENT IS THE PROPERTY OF ENGINEERING EXPRESS AND SHALL NOT BE REPRODUCED IN WHOLE OR IN PART WITHOUT WRITTEN CONSENT OF THE CERTIFYING ENGINEER. ANY REUSE OF THIS DOCUMENT ARE NOT PERMITTED AND INVALIDATE OUR CERTIFICATION.

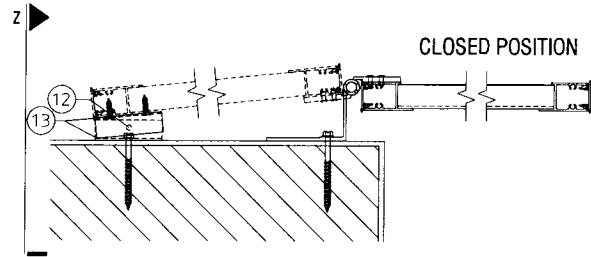
COPYRIGHT ENGINEERING EXPRESS

15-2341  
 SCALE: -  
 PAGE DESCRIPTION:  
 5

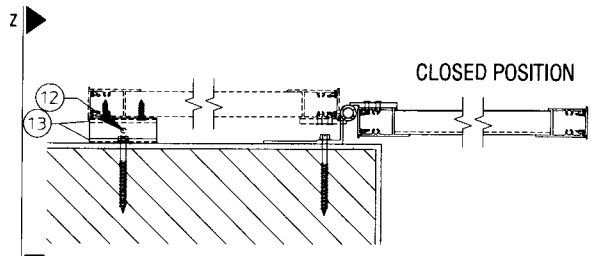
11/16/2016 - 1:37pm rickn V:\Projects\15-2341 Fullview Colonial Shutter Hybrid Non-HVHZ - FSA - Update FL16219.1 for 2-Project\WP\Revision\_Add 4in Blade (9-215-2341f - Colonial Shutter Hybrid - (TD))\dwg



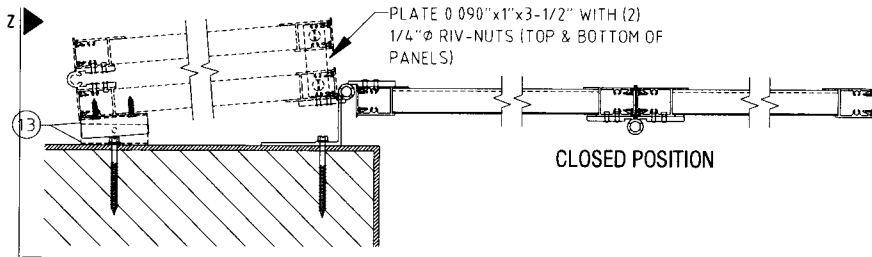
R PLAN VIEW 1  
SCALE 1-1/2" = 1'-0"



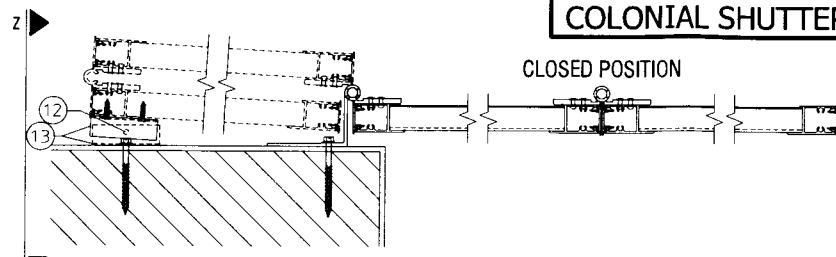
U PLAN VIEW 4  
SCALE 1-1/2" = 1'-0"



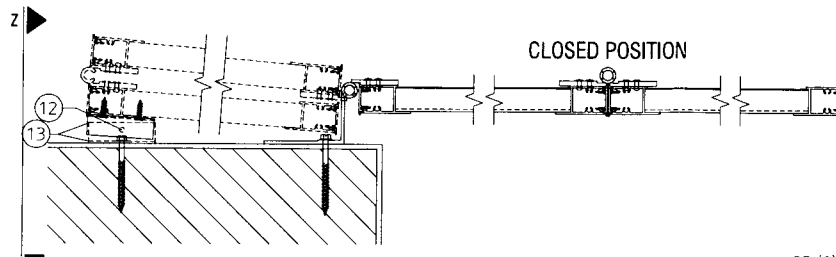
W PLAN VIEW 6  
SCALE 1-1/2" = 1'-0"



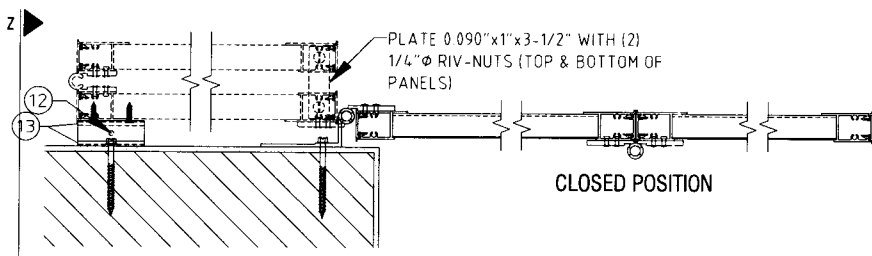
Y PLAN VIEW 8  
SCALE 1-1/2" = 1'-0"



S PLAN VIEW 2  
SCALE 1-1/2" = 1'-0"

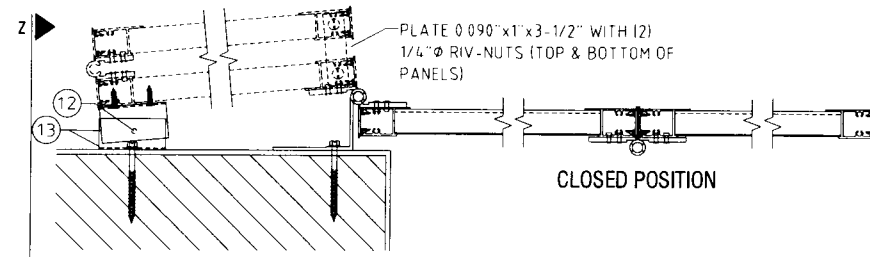


V PLAN VIEW 5  
SCALE 1-1/2" = 1'-0"

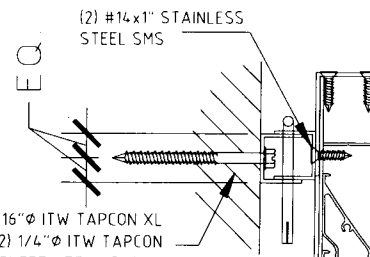


X PLAN VIEW 7  
SCALE 1-1/2" = 1'-0"

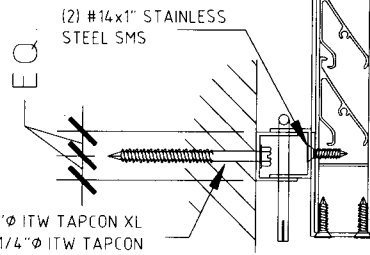
**COLONIAL SHUTTER**



T PLAN VIEW 3  
SCALE 1-1/2" = 1'-0"



(2) #14x1" STAINLESS STEEL SMS  
(1) 5/16" ITW TAPCON XL OR (2) 1/4" ITW TAPCON OR (2) 1/4" SHEET METAL SCREW OR (2) 1/4" LAG SCREW SEE ANCHOR SCHED. FOR MIN EMBED & EDGE DIST.



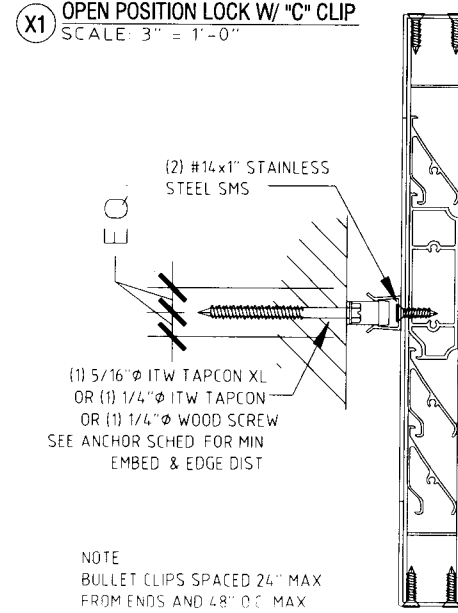
(2) #14x1" STAINLESS STEEL SMS  
(1) 5/16" ITW TAPCON XL OR (2) 1/4" ITW TAPCON OR (2) 1/4" SHEET METAL SCREW OR (2) 1/4" LAG SCREW SEE ANCHOR SCHED. FOR MIN EMBED & EDGE DIST.

(HINGES NOT SHOWN FOR CLARITY)

(DOUBLE "C" CLIP) (SINGLE "C" CLIP)

NOTE: CLIPS REQ'D TOP & BOTTOM FOR SPANS > 69" ONE CLIP REQ'D AT MID-SPAN (±3") FOR SPANS ≤ 69"

X1 OPEN POSITION LOCK W/ "C" CLIP  
SCALE 3" = 1'-0"



(2) #14x1" STAINLESS STEEL SMS  
(1) 5/16" ITW TAPCON XL OR (1) 1/4" ITW TAPCON OR (1) 1/4" WOOD SCREW SEE ANCHOR SCHED. FOR MIN EMBED & EDGE DIST.

NOTE: BULLET CLIPS SPACED 24" MAX FROM ENDS AND 48" O.C. MAX

X2 OPEN POSITION LOCK W/ BULLET CLIP  
SCALE 3" = 1'-0"

**Z-BAR ANCHOR SCHEDULE:**

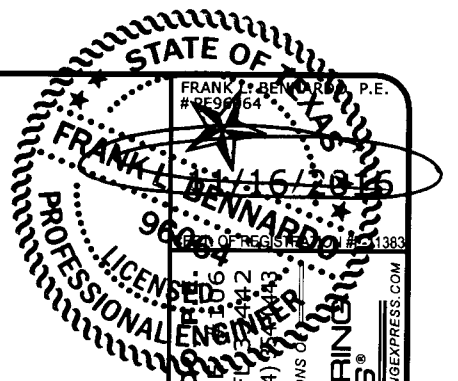
- TO 3350 PSI MIN. CONCRETE:**
  - 1/4" ELCO MALE/FEMALE PANELMATE W/ 2" MIN. EMBEDMENT AND 2-1/2" MIN. EDGE DISTANCE.
  - 1/4" ITW TAPCON SG W/ 1-3/4" MIN. EMBEDMENT AND 2-1/2" MIN. EDGE DISTANCE.
  - 1/4" ALL-POINTS SOLID SET W/ 7/8" MIN. EMBEDMENT AND 2" MIN. EDGE DISTANCE.
- TO HOLLOW CONCRETE BLOCK:**
  - 1/4" ELCO MALE/FEMALE PANELMATE W/ 1-1/4" MIN. EMBEDMENT AND 2" MIN. EDGE DISTANCE.\*\*
  - 1/4" ITW TAPCON SG W/ 1-1/4" MIN. EMBEDMENT AND 2-1/2" MIN. EDGE DISTANCE.\*
  - 1/4" ALL-POINTS SOLID SET W/ 7/8" MIN. EMBEDMENT AND 2" MIN. EDGE DISTANCE.\*
- TO G=0.42 MIN. WOOD HOST STRUCTURE:**
  - 1/4" HANGER BOLT WITH 1-1/2" MIN. THREAD PENETRATION AND 3/4" MIN. EDGE DISTANCE.\*
  - 1/4" ELCO MALE/FEMALE PANELMATE W/ 1-7/8" MIN. EMBEDMENT AND 3/4" MIN. EDGE DISTANCE.
  - 1/4" ITW TAPCON SG W/ 1-1/2" MIN. EMBEDMENT AND 3/4" MIN. EDGE DISTANCE.

NOTE: USE (3) ANCHORS PER 8" Z BAR AND (2) PER 4.5" Z BAR

\*: MUST UTILIZE (3) ANCHORS  
\*\*: MUST UTILIZE (3) ANCHORS AND LIMITED TO 80" MAX SHUTTER SPAN

**OPEN POSITION LOCK ANCHOR SCHEDULE:**

- WITH "C" CLIPS OR DOUBLE "C" CLIPS:**
  - TO 2899 PSI MIN. CONCRETE:**
    - (1) 5/16" ITW TAPCON XL W/ 1-3/4" MIN. EMBEDMENT AND 2" MIN. EDGE DISTANCE.
  - TO 3192 PSI MIN. CONCRETE:**
    - (2) 1/4" ITW SS TAPCON W/ 1-3/4" MIN. EMBEDMENT AND 1" MIN. EDGE DISTANCE.
  - TO HOLLOW CONCRETE BLOCK:**
    - (1) 5/16" ITW TAPCON XL W/ 1-3/4" MIN. EMBEDMENT AND 4" MIN. EDGE DISTANCE.
  - TO G=0.42 MIN. WOOD HOST STRUCTURE:**
    - (2) 1/4" WOOD SCREWS OR SHEET METAL SCREWS W/ 1-3/4" MIN. THREAD PENETRATION AND 3/4" MIN. EDGE DISTANCE.
    - (2) 1/4" LAG SCREWS W/ 1-1/2" MIN. THREAD PENETRATION AND 3/4" MIN. EDGE DISTANCE.
- WITH BULLET CLIPS:**
  - TO 3192 PSI MIN. CONCRETE:**
    - (1) 1/4" ITW SS TAPCON W/ 1-3/4" MIN. EMBEDMENT AND 2-1/2" MIN. EDGE DISTANCE.
  - TO HOLLOW CONCRETE BLOCK:**
    - (1) 5/16" ITW TAPCON XL W/ 1-3/4" MIN. EMBEDMENT AND 4" MIN. EDGE DISTANCE.
  - TO G=0.42 MIN. WOOD HOST STRUCTURE:**
    - (1) 1/4" WOOD SCREWS OR SHEET METAL SCREWS W/ 1-3/4" MIN. THREAD PENETRATION AND 3/4" MIN. EDGE DISTANCE.



FRANK L. BENNARD, P.E.  
#96684  
12/16/2016  
96684  
PROFESSIONAL ENGINEER  
LICENSED IN THE STATE OF TEXAS  
FRANK L. BENNARD, P.E.  
160 SW 12th AVENUE, SUITE 106  
DEERFIELD BEACH, FL 33442  
Ph: (954) 354-0660 FAX: (954) 354-4443  
POWERED BY THE INNOVATIONS OF  
ENGINEERING EXPRESS  
EXPERIENCE MORE AT WWW.ENGINEERINGEXPRESS.COM

**Town & Country INDUSTRIES**  
Wholesale Aluminum and Building Products  
A Division of a/c Supply Co., Inc.  
400 WEST MCNAB ROAD  
FT. LAUDERDALE, FL 33309

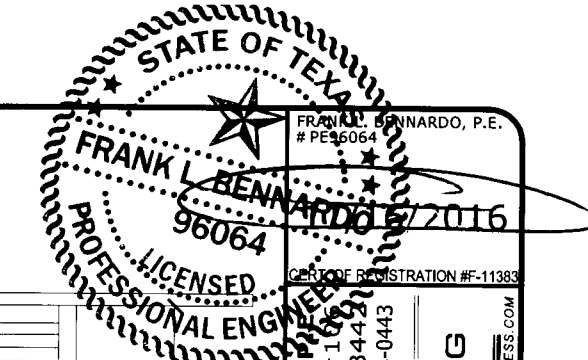
DRWN	CHKD	DATE
KL	FLB	06/08/10
RVN	FLB	10/27/16

REMARKS  
INIT ISSUE  
REV

COPYRIGHT ENGINEERING EXPRESS

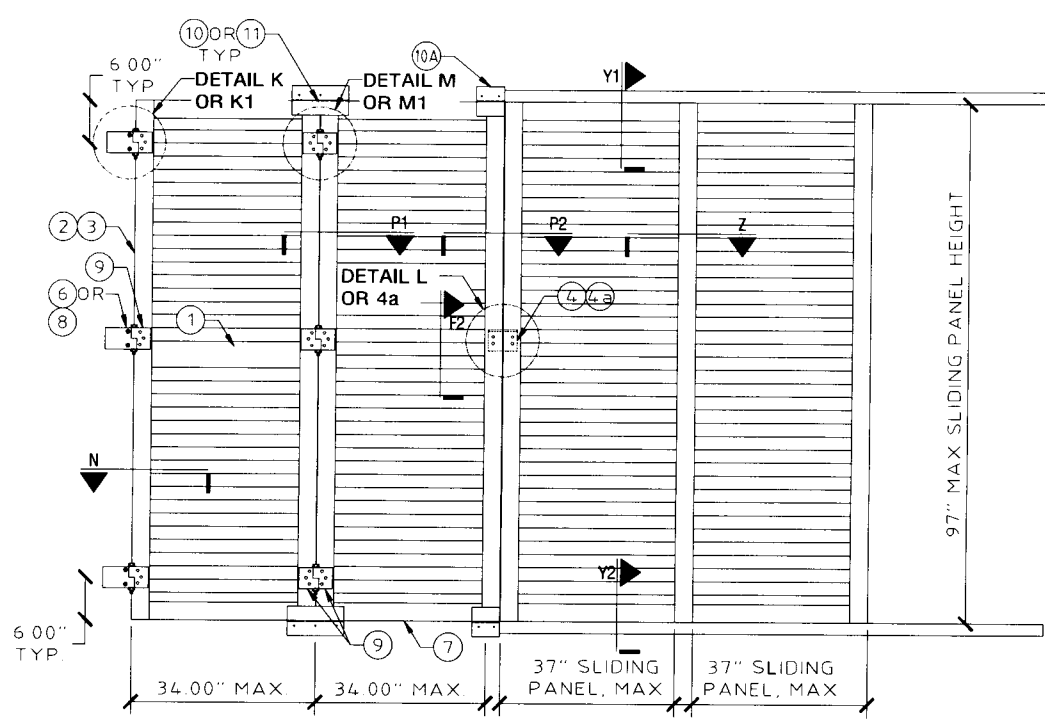
15-2341  
SCALE:  
PAGE DESCRIPTION:  
6

11/16/2016 - 1:37pm rckn V:\Projects\15-2341 Fullview Colonial Shutter Hybrid Non-HVHZ - FSA - Update FL16219.1 for 2-Project\WP\Revision\_Add 4in Blade (9-215-2341f - Colonial Shutter Hybrid - (TD))\dwg

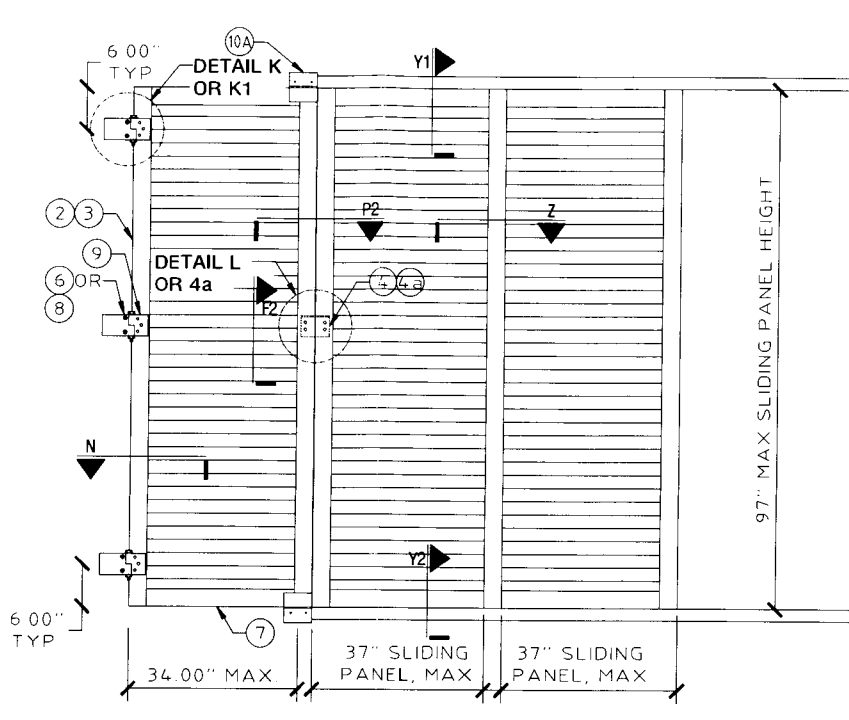


**FRANK L. BERNARDO, P.E.**  
 160 SW 12th AVENUE, #100  
 DEERFIELD BEACH, FL 33442  
 PH: (954) 354-0660 FAX: (954) 354-0443  
 LICENSED PROFESSIONAL ENGINEER  
 POWERED BY THE INNOVATIONS OF  
**ENGINEERING EXPRESS**  
 EXPERIENCE MORE AT WWW.ENGINEERINGEXPRESS.COM

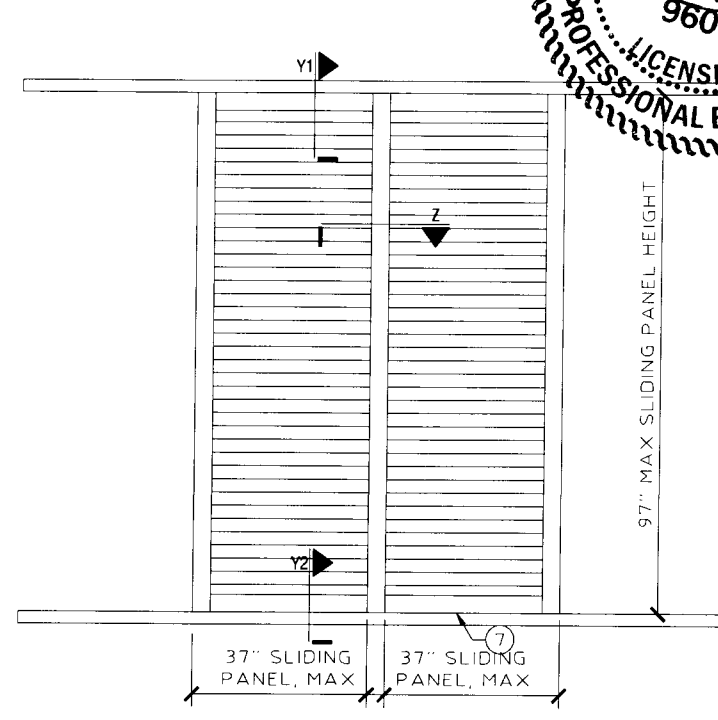
**Town & Country**  
 INDUSTRIES  
 Wholesale Aluminum and Building Products  
 A Division of AEC Supply Co. Inc.  
 400 WEST MCNAB ROAD  
 FT. LAUDERDALE, FL 33309



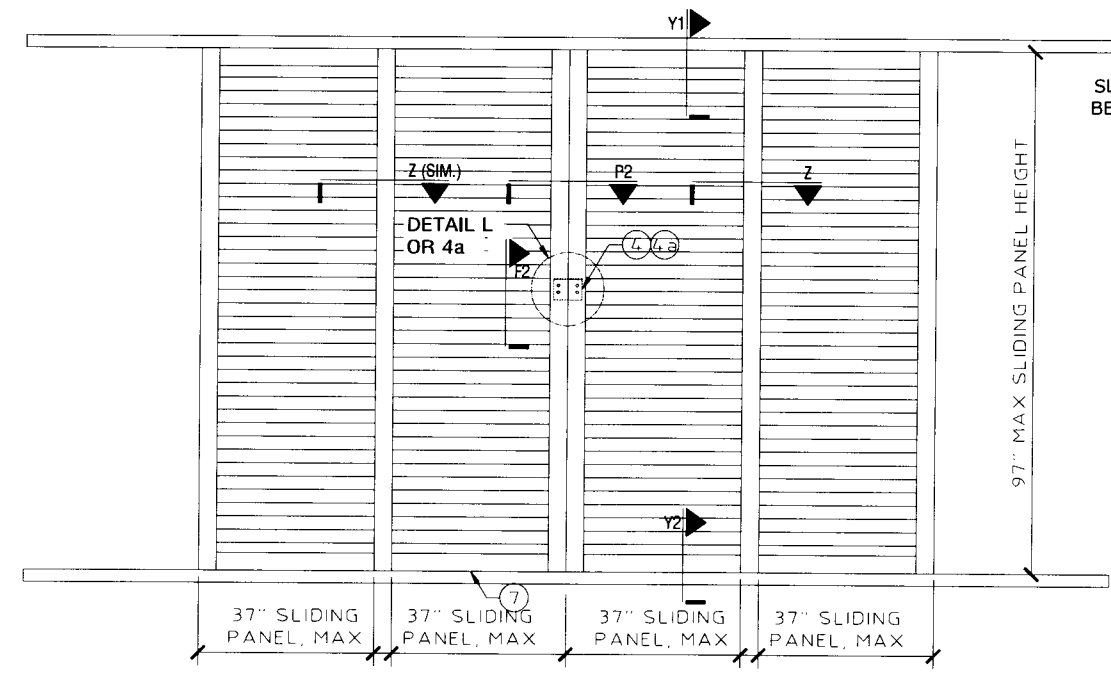
**X1** ELEVATION: 2 HINGED AND 2 SLIDING PANELS  
 SCALE: N T S



**X2** ELEVATION: 1 HINGED AND 2 SLIDING PANELS  
 SCALE: N T S

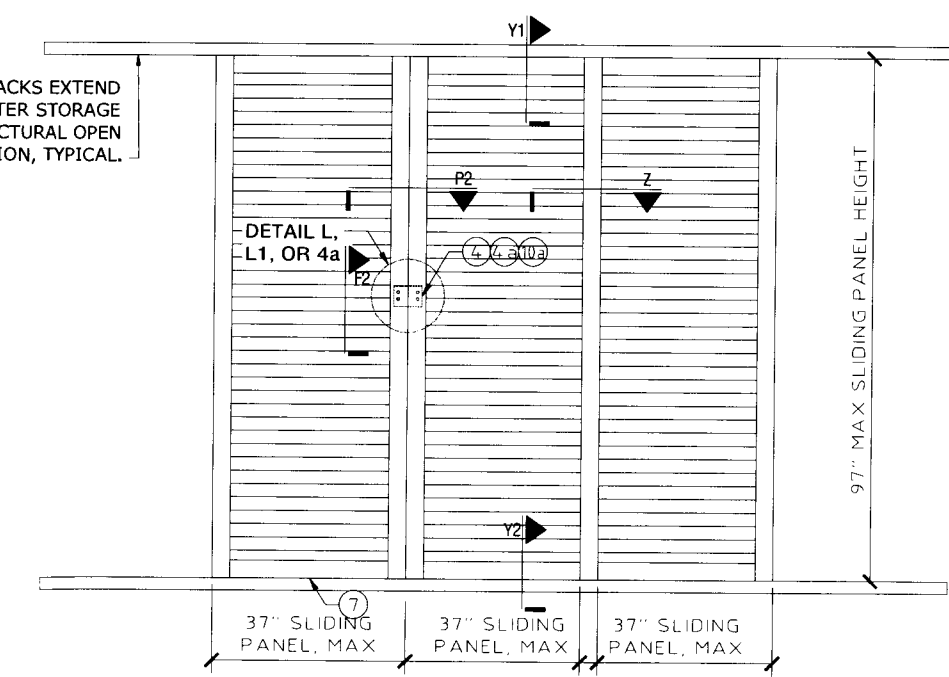


**X5** ELEVATION: 2 SLIDING PANELS  
 SCALE: N T S



**X3** ELEVATION: 4 SLIDING PANELS  
 SCALE: N T S

SLIDING PANEL TRACKS EXTEND BEYOND FOR SHUTTER STORAGE IN NON-STRUCTURAL OPEN POSITION, TYPICAL.



**X4** ELEVATION: 3 SLIDING PANELS  
 SCALE: N T S

NOTE SLIDING PANEL CONSTRUCTION SAME AS HINGED PANELS.

DRWN	CHKD	DATE
KL	FLB	06/08/10
RWN	FLB	10/27/16

REMARKS:  
 INIT ISSUE  
 REV

THIS DOCUMENT IS THE PROPERTY OF ENGINEERING EXPRESS AND SHALL NOT BE REPRODUCED IN WHOLE OR IN PART WITHOUT WRITTEN CONSENT OF THE CERTIFYING ENGINEER. ANY UNAUTHORIZED REPRODUCTION OR TRANSMISSION OF THIS DOCUMENT ARE NOT PERMITTED AND WILL BE IN VIOLATION OF OUR CERTIFICATION.

COPYRIGHT ENGINEERING EXPRESS

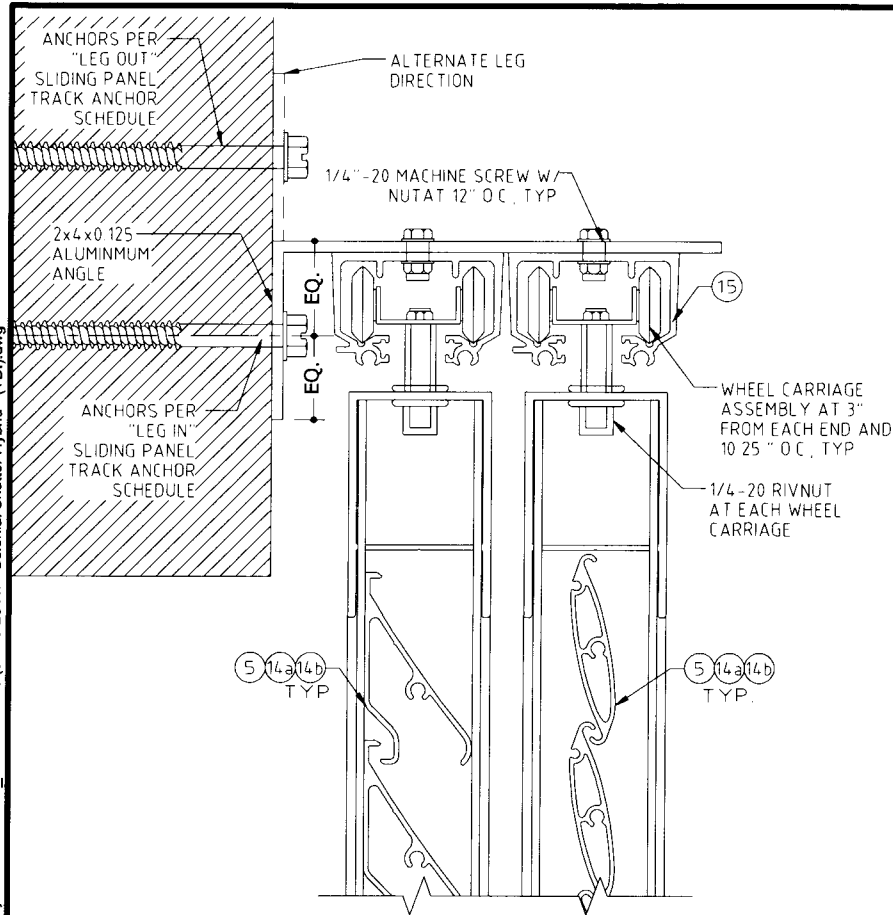
15-2341

SCALE:  
 PAGE DESCRIPTION:

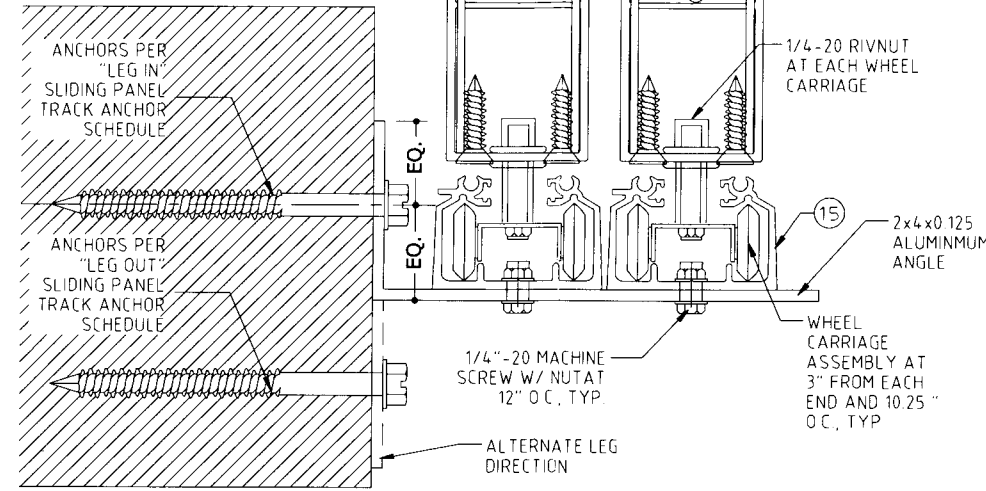


V:\Projects\15-2341 Fullview Colonial Shutter Hybrid Non-HVHZ - FSA - Update FL16219.1 for 2-Project\WPI\Revision\_Add 4in Blade (9-215-2341) - Colonial Shutter Hybrid - (TDD).dwg

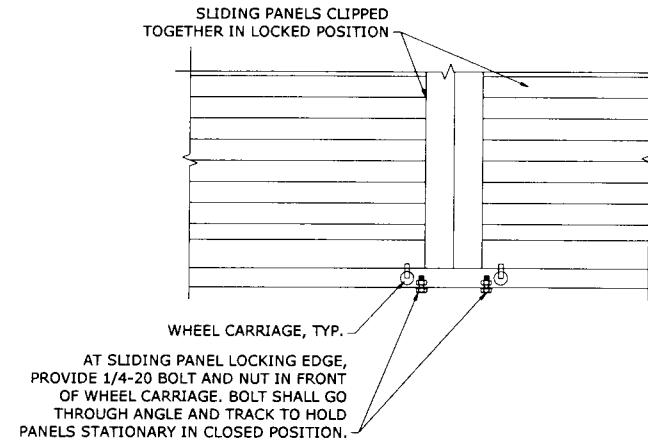
11/16/2016 - 1:37pm rickn



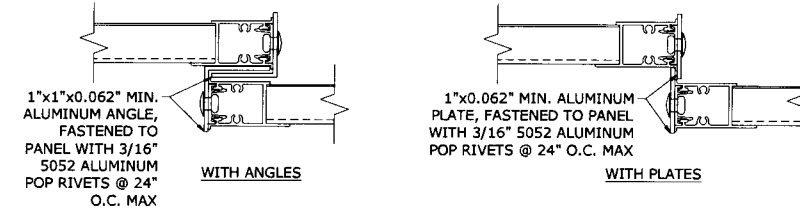
Y1 SLIDING PANEL TOP TRACK  
SCALE: N.T.S.



Y2 SLIDING PANEL BOTTOM TRACK  
SCALE: N.T.S.



ZZ WHEEL CARRIAGE STOPS FOR SLIDING PANELS  
SCALE: N.T.S.



Z SLIDING PANEL INTERLOCK  
SCALE: N.T.S.

"LEG IN" SLIDING PANEL TRACK ANCHOR SCHEDULE:

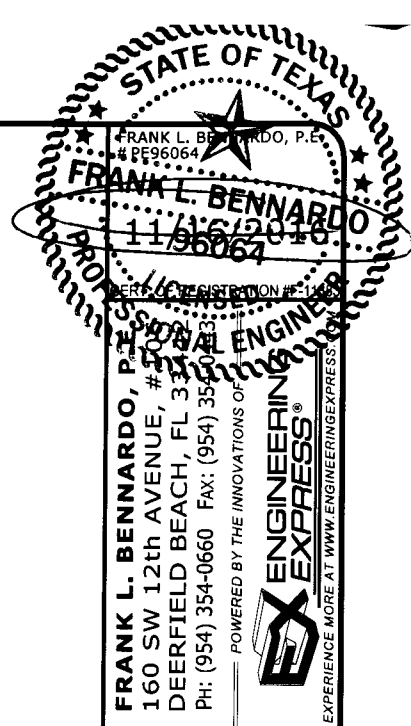
HOST STRUCTURE	ANCHOR	SLIDING PANEL VERTICAL SPAN					
		36"	48"	60"	72"	84"	97"
CONCRETE (3192 PSI MIN.)	1/4" ITW SS TAPCONS W/ 1-3/4" MIN. EMBEDMENT AND 2-1/2" MIN. EDGE DISTANCE	16" O.C.	16" O.C.	16" O.C.	16" O.C.	16" O.C.	16" O.C.
	1/4" ELCO ULTRACON W/ 1-3/4" MIN. EMBEDMENT AND 2-1/2" MIN. EDGE DISTANCE	16" O.C.	16" O.C.	16" O.C.	16" O.C.	16" O.C.	16" O.C.
CONCRETE (3500 PSI MIN.)	1/4" MILLENIUM MILLFAST W/ 1-3/4" MIN. EMBEDMENT AND 2-1/2" MIN. EDGE DISTANCE	16" O.C.	16" O.C.	16" O.C.	16" O.C.	16" O.C.	16" O.C.
HOLLOW CONCRETE BLOCK	1/4" MILLENIUM MILLFAST W/ 1-1/4" MIN. EMBEDMENT AND 2-1/2" MIN. EDGE DISTANCE	16" O.C.	13" O.C.	11" O.C.	9" O.C.	8" O.C.	7" O.C.
	1/4" ITW SS TAPCONS W/ 1-1/4" MIN. EMBEDMENT AND 2-1/2" MIN. EDGE DISTANCE	15" O.C.	12" O.C.	9" O.C.	8" O.C.	7" O.C.	6" O.C.
	1/4" ELCO ULTRACON W/ 1-1/4" MIN. EMBEDMENT AND 2-1/2" MIN. EDGE DISTANCE	16" O.C.	13" O.C.	10" O.C.	8" O.C.	7" O.C.	6" O.C.
	5/16" ITW TAPCON XL W/ 1-3/4" MIN. EMBEDMENT AND 4" MIN. EDGE DISTANCE	16" O.C.	16" O.C.	15" O.C.	13" O.C.	11" O.C.	9" O.C.
	5/16" ELCO ULTRACON W/ 1-1/4" MIN. EMBEDMENT AND 3-1/8" MIN. EDGE DISTANCE	16" O.C.	16" O.C.	16" O.C.	14" O.C.	12" O.C.	10" O.C.
WOOD (G=0.42 MIN.)	1/4" LAG SCREW W/ 1-1/2" MIN. EMBEDMENT AND 3/4" MIN. EDGE DISTANCE	16" O.C.	16" O.C.	16" O.C.	16" O.C.	16" O.C.	16" O.C.
	#14 SMS OR WOOD SCREW W/ 1-1/2" MIN. EMBEDMENT AND 3/4" MIN. EDGE DISTANCE	16" O.C.	16" O.C.	16" O.C.	16" O.C.	15" O.C.	13" O.C.

**NOTE:** TABLE PROVIDES MAXIMUM ANCHOR SPACING FOR INDICATED ANCHOR TYPES AND SLIDING PANEL VERTICAL SPANS FOR "LEG IN" CONDITION. ANCHORS SHALL BE LOCATED 2" MAX FROM TRACK ENDS.

"LEG OUT" SLIDING PANEL TRACK ANCHOR SCHEDULE:

HOST STRUCTURE	ANCHOR	SLIDING PANEL VERTICAL SPAN					
		36"	48"	60"	72"	84"	97"
CONCRETE (3192 PSI MIN.)	1/4" ITW SS TAPCONS W/ 1-3/4" MIN. EMBEDMENT AND 2-1/2" MIN. EDGE DISTANCE	16" O.C.	13" O.C.	10" O.C.	9" O.C.	7" O.C.	6" O.C.
	1/4" ELCO ULTRACON W/ 1-3/4" MIN. EMBEDMENT AND 2-1/2" MIN. EDGE DISTANCE	16" O.C.	16" O.C.	13" O.C.	11" O.C.	9" O.C.	8" O.C.
CONCRETE (3500 PSI MIN.)	1/4" MILLENIUM MILLFAST W/ 1-3/4" MIN. EMBEDMENT AND 2-1/2" MIN. EDGE DISTANCE	16" O.C.	13" O.C.	10" O.C.	9" O.C.	7" O.C.	6" O.C.
HOLLOW CONCRETE BLOCK	1/4" MILLENIUM MILLFAST W/ 1-1/4" MIN. EMBEDMENT AND 2-1/2" MIN. EDGE DISTANCE	7" O.C.	5" O.C.	4" O.C.			
	1/4" ITW SS TAPCONS W/ 1-1/4" MIN. EMBEDMENT AND 2-1/2" MIN. EDGE DISTANCE	6" O.C.	4" O.C.	4" O.C.	3" O.C.	3" O.C.	
	1/4" ELCO ULTRACON W/ 1-1/4" MIN. EMBEDMENT AND 2-1/2" MIN. EDGE DISTANCE	6" O.C.	5" O.C.	4" O.C.	3" O.C.	3" O.C.	
	5/16" ITW TAPCON XL W/ 1-3/4" MIN. EMBEDMENT AND 4" MIN. EDGE DISTANCE	10" O.C.	7" O.C.	6" O.C.	5" O.C.	4" O.C.	4" O.C.
	5/16" ELCO ULTRACON W/ 1-1/4" MIN. EMBEDMENT AND 3-1/8" MIN. EDGE DISTANCE	10" O.C.	8" O.C.	6" O.C.			
WOOD (G=0.42 MIN.)	1/4" LAG SCREW W/ 1-1/2" MIN. EMBEDMENT AND 3/4" MIN. EDGE DISTANCE	16" O.C.	14" O.C.	11" O.C.	10" O.C.	8" O.C.	7" O.C.
	#14 SMS OR WOOD SCREW W/ 1-1/2" MIN. EMBEDMENT AND 3/4" MIN. EDGE DISTANCE	13" O.C.	10" O.C.	8" O.C.	7" O.C.	6" O.C.	5" O.C.

**NOTE:** TABLE PROVIDES MAXIMUM ANCHOR SPACING FOR INDICATED ANCHOR TYPES AND SLIDING PANEL VERTICAL SPANS FOR ALTERNATE "LEG OUT" CONDITION. ANCHORS SHALL BE LOCATED 2" MAX FROM TRACK ENDS.



**Town & Country INDUSTRIES**  
Wholesale Aluminum and Building Products  
A Division of ALC Supply Co., Inc.  
400 WEST MCNAB ROAD  
FT. LAUDERDALE, FL 33309

DRWN	CHKD	DATE
KL	FLB	06/08/10
RWN	FLB	10/27/16

REMARKS: INIT ISSUE

THIS DOCUMENT IS THE PROPERTY OF ENGINEERING EXPRESS AND SHALL NOT BE REPRODUCED IN WHOLE OR PART WITHOUT WRITTEN CONSENT OF THE CERTIFYING PROFESSIONAL ENGINEER. ANY REVISIONS, HIGH LIGHTING OR OTHER MARKINGS TO THIS DOCUMENT ARE NOT PERMITTED AND INVALIDATE OUR CERTIFICATION.

COPYRIGHT ENGINEERING EXPRESS

15-2341  
SCALE:  
PAGE DESCRIPTION:

