

PARTS LIST FOR STANDARD CONSTRUCTION			
ITEM #	DESCRIPTION	MATERIAL	ALLOY
1	HEAD / SILL FRAME	0.080" THK. EXTRUDED ALUM.	6063-T6
2	JAMB FRAME	0.060" THK. EXTRUDED ALUM.	6063-T6
3	BLADE	0.063" THK. EXTRUDED ALUM.	6063-T6
4	BLADE BRACE	EXTRUDED ALUM.	6063-T6
5	H.V.B.S STRAP	0.125" THK. EXTRUDED ALUM.	6063-T6
6	SCR 8-18 X 3.00 HWH AB W/SEAL WASHER	410SS/ZINC COATED	-

MULTI SECTION CONNECTION PARTS			
ITEM #	DESCRIPTION	MATERIAL	ALLOY
7	MULLION SUPPORT ANGLE	0.125" THK EXTRUDED ALUM	6063-T6

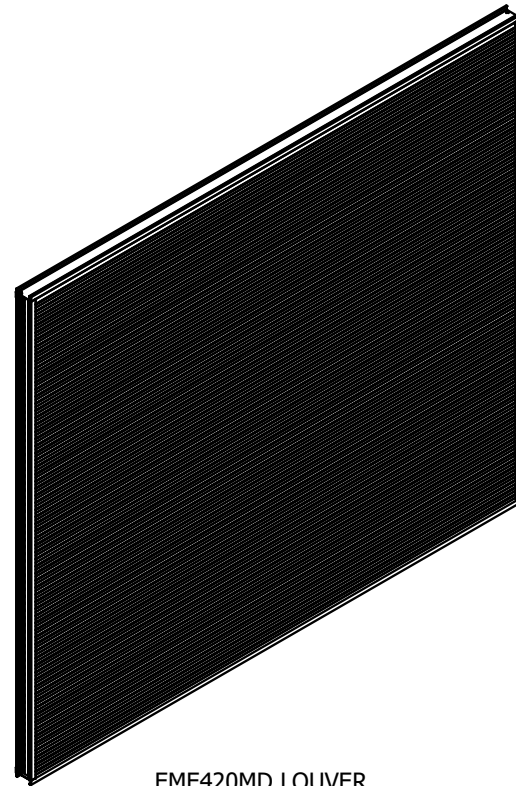
INSTALLATION PARTS			
ITEM #	DESCRIPTION	MATERIAL	ALLOY
8	ATTACHMENT CLIP ANGLE, 2" LG.	0.250" THK EXTRUDED ALUM.	6063-T6
9	CLIP ANGLE - FORMED, 2" LG.	0.250" THK FORMED ALUM.	3003-H14
10	CLIP ANGLE - FORMED, 4" LG.	0.250" THK FORMED ALUM.	3003-H14
11	ATTACHMENT CLIP ANGLE, CONT.	0.250" THK EXTRUDED ALUM.	6063-T6
12	CLIP ANGLE - FORMED, CONT.	0.250" THK EXTRUDED ALUM.	3003-H14
13	STRUCTURAL ATTACHMENT ANGLE, CONT.	0.500" THK A36 STL	-
14	STRUCTURAL ATTACHMENT ANGLE, 24" LG.	0.500" THK A36 STL	-
15	MULLION SUPPORT ATTACHMENT PLATE	0.250" THK A36 STL	-
16	SCREW # 10-16 X 1.500" LG. HWH SDS	ZINC PLATED	-
17	3/8-16 X 2.000" LG. A307 GRADE A HHB W/WASHER & LOCKNUT	ZINC PLATED	-
18	5/8-11 X 2.000" LG. A307 GRADE A HHB W/WASHER & LOCKNUT	ZINC PLATED	-
19	3/8-16 X 2.500" LG A307 GRADE A HHB W/ WASHER & LOCKNUT	ZINC PLATED	-
20	1/4-20 X 2.500" LG A307 GRADE A HHB W/ WASHER & LOCKNUT	ZINC PLATED	-
21	SUBSTRATE FASTENER (BY OTHERS)	VARIES (REF TABLE 1/08)	-

UNIVERSAL SLEEVE PARTS			
ITEM #	DESCRIPTION	MATERIAL	ALLOY
22	HEAD/SILL FRAME W/INTEGRAL FLANGE	0.080" THK. EXTRUDED ALUM.	6063-T6
23	JAMB FRAME W/INTEGRAL FLANGE	0.080" THK. EXTRUDED ALUM.	6063-T6
24	FRONT FLANGE UNIVERSAL SLEEVE	0.250" THK. FORMED ALUM.	3003-H14
25	CONT. RETAINING ANGLE	0.250" THK. EXTRUDED ALUM.	6063-T6
26	US MULLION ATTACHMENT ANGLE, 6" LG.	0.250" THK. EXTRUDED ALUM.	6063-T6
27	1/2 -13 X 2.500" LG A307 GRADE 5 HHB W/WASHER & LOCKNUT	ZINC PLATED	-
28	SCREW 1/4-20 X 1.000" LG. HWH SDS	410SS/ZINC COATED	-

MULLION SUPPORT OPTIONS BASED ON SECTION HEIGHT				
ITEM #	DESCRIPTION	LOUVER HEIGHT RANGE	MATERIAL	ALLOY
29	CHAN C3 X 4.1 X 20'	GREATER THAN 12" TO 93"	A36 CARBON STEEL	-
30	CHAN C4 X 5.4 X 20'	GREATER THAN 93" TO 109"	A36 CARBON STEEL	-
31	CHAN C5 X 6.7 X 20'	GREATER THAN 109" TO 127"	A36 CARBON STEEL	-
32	CHAN C6 X 8.2 X 20'	GREATER THAN 127" TO 144"	A36 CARBON STEEL	-

NOTES:

- THE EME420MD COMPLIES WITH THE REQUIREMENTS OF THE 2018 IBC. THE EME420MD HAS BEEN TESTED IN ACCORDANCE WITH FLORIDA PROTOCOLS TAS-201, 202 & 203 FOR LARGE MISSILE IMPACT, UNIFORM PRESSURE AND CYCLIC WIND PRESSURE.
- THIS LOUVER SYSTEM IS APPROVED FOR APPLICATIONS WITH DESIGN PRESSURES OF **120 PSF OR LESS.**
- THIS LOUVER SYSTEM IS TO BE INSTALLED IN LOCATIONS WHERE THE ROOM BEHIND THE LOUVER IS DESIGNED TO DRAIN WATER PENETRATING INTO THE ROOM AND THE ROOM WILL HOUSE WATER RESISTANT / WATER PROOF EQUIPMENT, COMPONENTS OR SUPPLIES.
- THIS LOUVER SYSTEM IS NON-BEARING AND IS NOT DESIGNED TO WITHSTAND BUILDING DEAD LOADS.
- IT SHALL BE THE RESPONSIBILITY OF PERMIT HOLDER/BUILDING DESIGN ENGINEER OF RECORD TO VERIFY THE STRUCTURAL INTEGRITY OF THE STRUCTURE TO SUPPORT THE LOADS IMPOSED BY THIS LOUVER SYSTEM.
- MAXIMUM SINGLE SECTION SIZE : **87 15/16" WIDE X 144" HIGH OR 130" WIDE X 112" HIGH.**
- MAXIMUM ASSEMBLED LOUVER SIZE : **UNLIMITED WIDE X 144" HIGH** W/SECTION MULLIONS AT **87 7/8"** (TRIANGLES ALLOWED)
- SECTIONS OR ASSEMBLIES MAY BE STACKED VERTICALLY PROVIDED SUITABLE STRUCTURAL SUPPORT IS DESIGNED AND INSTALLED BY OTHERS TO SUPPORT ALL LOADS TRANSFERRED FROM THE LOUVER.
- ALL CMU BLOCKS MUST BE GROUT FILLED. MIN. PRISM STRENGTH OF 1500 PSI AT TIME OF INSTALLATION. CMU BLOCKS MUST BE TYPE 1, GRADE N, LIGHT, MEDIUM OR NORMAL WEIGHT PER ASTM C90. GROUT AND MORTAR MUST COMPLY WITH FBC.
- PART NUMBERS WITH SQUARE BALLOONS ARE **"SHIPPED LOOSE PARTS"**.
- ALL FASTENERS SHALL BE CORROSION RESISTANT.



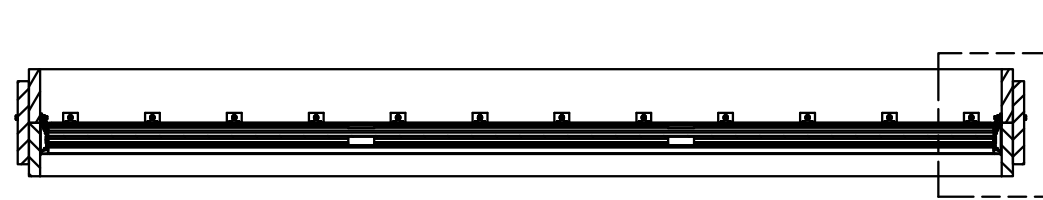
EME420MD LOUVER

ABBREVIATIONS:

- CONT. - CONTINUOUS
- C-C - CENTER TO CENTER
- D - SUBSTRATE DEPTH
- DIM. - DIMENSION
- FLG. - FLANGE
- HDG. - HOT DIPPED GALVANIZED
- H.V.B.S. - HIDDEN VERTICLE BLADE SUPPORT
- H.H.B.S. - HIDDEN HORIZONTAL BLADE SUPPORT
- HWH - HEX WASHER HEAD
- L.D. - LOUVER DIMENSION
- MAX. - MAXIMUM
- MIN. - MINIMUM
- NOM. - NOMINAL
- N.T.E. - NOT TO EXCEED
- N.T.S. - NOT TO SCALE
- O/C - ON CENTER
- OPP. - OPPOSITE
- R.O. - ROUGH OPENING
- REF. - REFERENCE
- S.S. - SHIP SECTION
- S.S.D. - SHIP SECTION DIMENSION
- S.D.S. - SELF DRILLING SCREW
- SIM. - SIMILAR
- STL - STEEL
- SUB. - SUBSTRATE
- TYP. - TYPICAL
- U.N.O. - UNLESS NOTED OTHERWISE

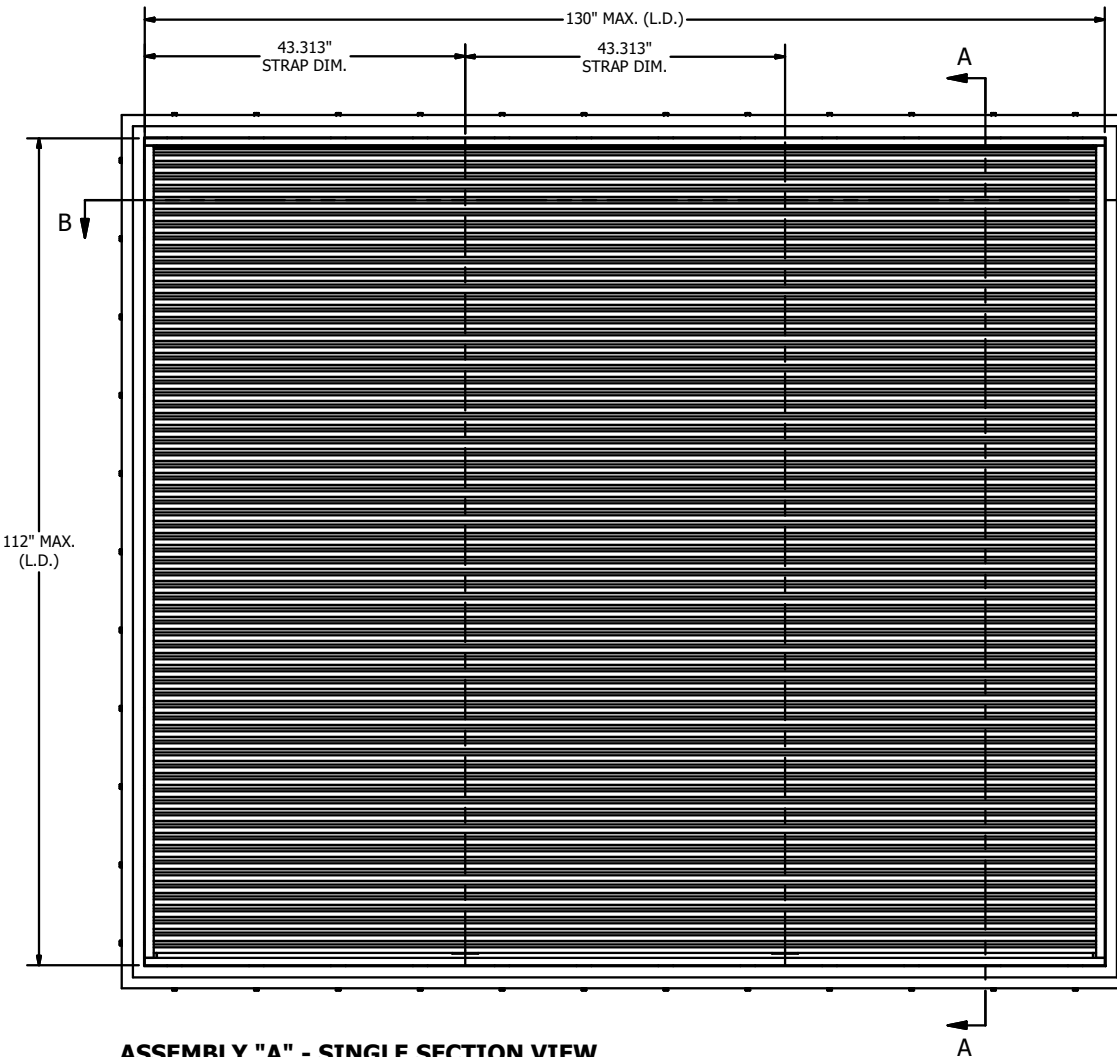
DRAWING SHEET INDEX:

- SHEET 01** - NOTES, PARTS LIST, DRAWING INDEX, ASSEMBLY "A"
- SHEET 02** - ASSEMBLY "A" - HEAD/SILL INSTALL (ALL SUBSTRATES)
- SHEET 03** - ASSEMBLY "A", "B" & "C" - JAMB INSTALL (ALL SUBSTRATES)
- SHEET 04** - ASSEMBLY "B" - BASIC ASSEMBLY
- SHEET 05** - ASSEMBLY "C" - BASIC ASSEMBLY
- SHEET 06** - ASSEMBLY "B" & "C" - MULLION SUPPORT CONNECTION @ HEAD/SILL
- SHEET 07** - ASSEMBLY "B" & "C" - VISIBLE MULLION CONNECTION (ALL SUBSTRATES)
- SHEET 08** - SUBSTRATE FASTENER TABLE, PARTS (ITEMS 01 THRU 04, 07 & 08)
- SHEET 09** - PARTS (ITEMS 09 THRU 14)
- SHEET 10** - PARTS (ITEMS 15, 22 THRU 26, 29 THRU 32)



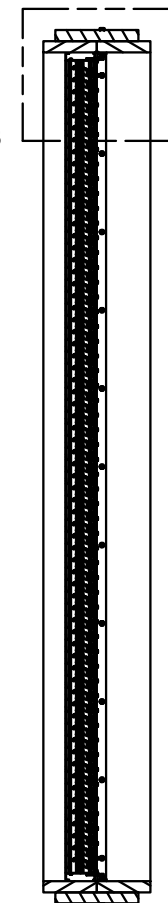
SECTION B-B

- REF DETAIL F/03 FOR JAMB CONNECTION DETAIL (WOOD)
- REF DETAIL G/03 FOR JAMB CONNECTION DETAIL (STEEL)
- REF DETAIL H/03 FOR JAMB CONNECTION DETAIL (CONCRETE)
- REF DETAIL J/03 FOR JAMB CONNECTION DETAIL (CMU)
- REF DETAIL K/03 FOR JAMB CONNECTION DETAIL (UNIVERSAL SLEEVE)



ASSEMBLY "A" - SINGLE SECTION VIEW
MAX. SHIP SECTION SIZE - 130" W X 112" H

- REF DETAIL A/02 FOR HEAD/SILL CONNECTION DETAIL (WOOD)
- REF DETAIL B/02 FOR HEAD/SILL CONNECTION DETAIL (STEEL)
- REF DETAIL C/02 FOR HEAD/SILL CONNECTION DETAIL (CONCRETE)
- REF DETAIL D/02 FOR HEAD/SILL CONNECTION DETAIL (CMU)
- REF DETAIL E/02 FOR HEAD/SILL CONNECTION DETAIL (UNIVERSAL SLEEVE)



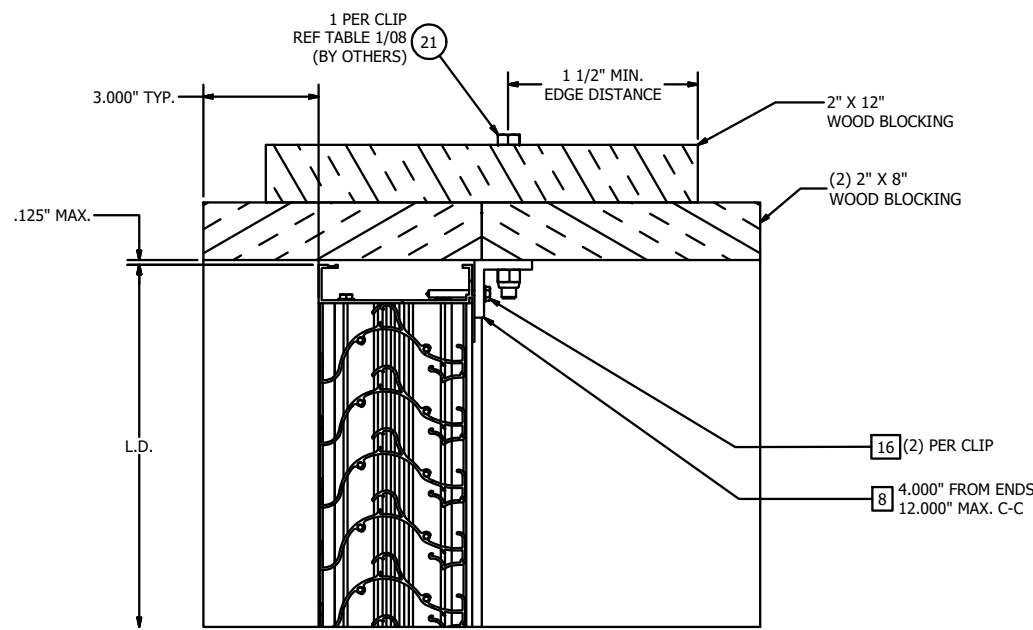
SECTION A-A



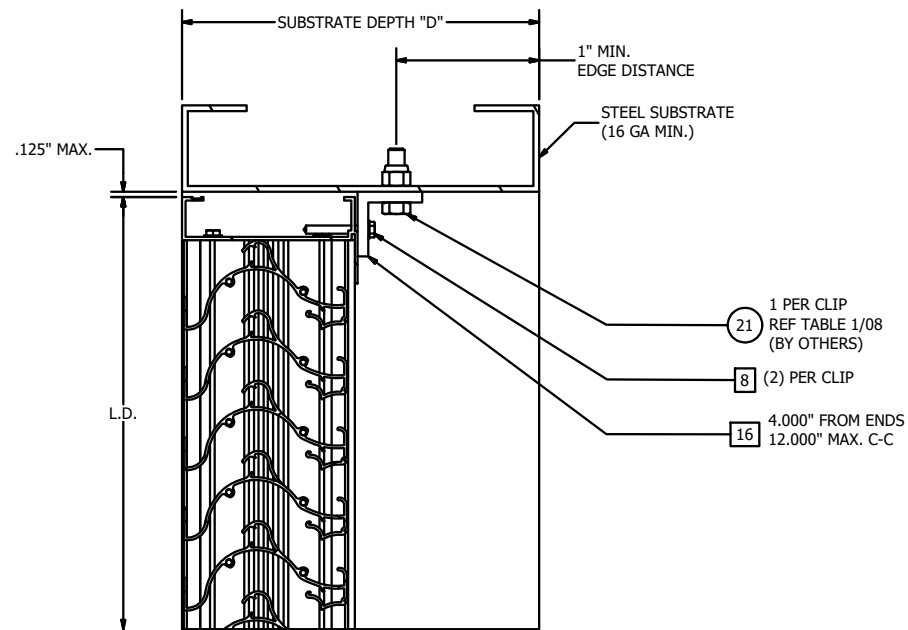
MELISSA M. MASSAR, P.E.
NO. 132158

Tolerances	Unless Stated Otherwise Use W/Q-007, W/Q-008
Fractions	±1/16
Two Decimals	±0.020
Three Decimals	±0.010
Angle Dimensions	±2

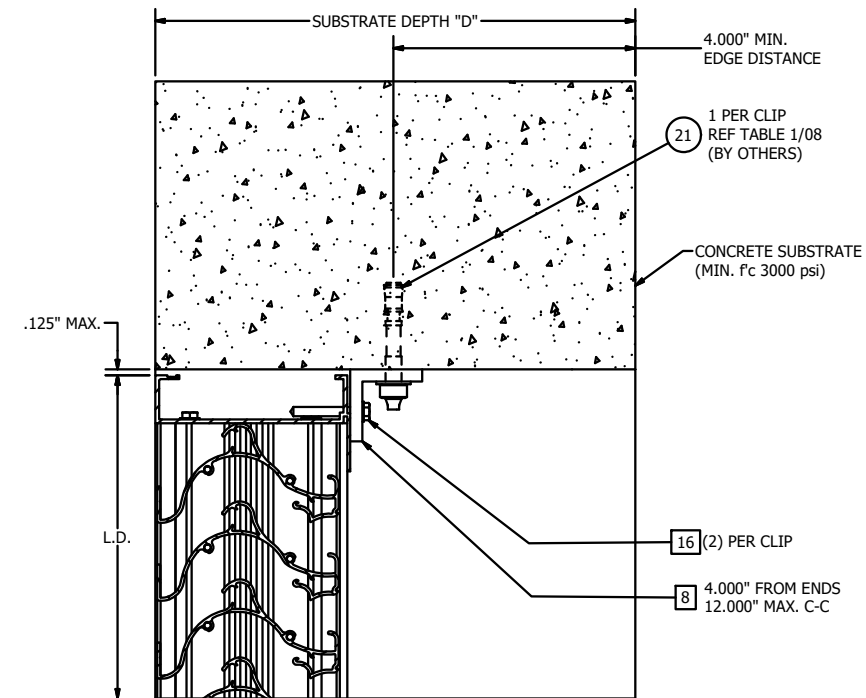
REV	A	REV'D ENGINEER OF RECORD, UPDATED INFO.	SSK	JDS	WRT	MMM	09/16/20
CHECKED	DRP	5/15/2012	BY	CHK	APVD	APVD	DATE
APPROVED							
MATERIAL	EXTRUDED ALUMINUM		PRODUCT	EME420MD - WIND DRIVEN RAIN RESISTANT LOUVER			
TITLE	NOTES, PARTS LIST, DRAWING INDEX, ASSEMBLY 'A'						
SIZE	D	DWG NO	60-022379-00B	REV	A		
SCALE	NTS		INVENTOR	SHEET 1 OF 10			



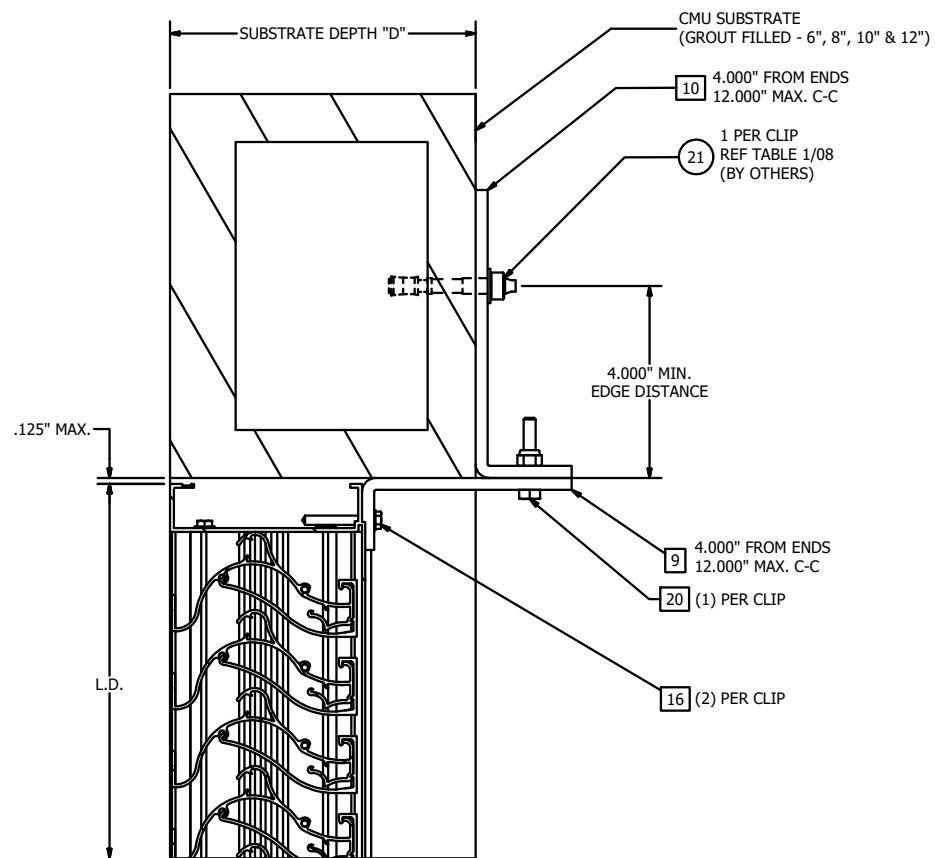
DETAIL A
ASSEMBLY 'A' - HEAD/SILL CONNECTION
(WOOD SUBSTRATE)



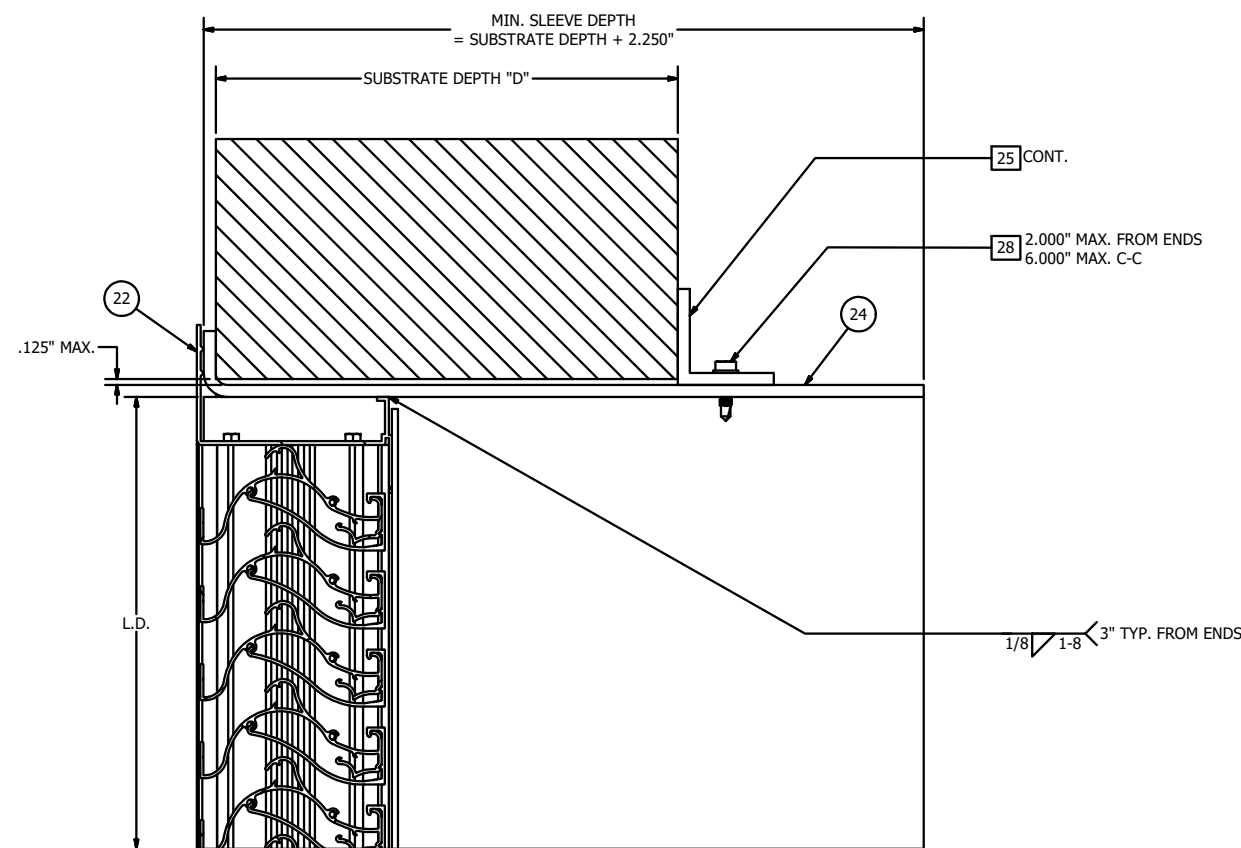
DETAIL B
ASSEMBLY 'A' - HEAD/SILL CONNECTION
(STEEL SUBSTRATE)



DETAIL C
ASSEMBLY 'A' - HEAD/SILL CONNECTION
(CONCRETE SUBSTRATE)



DETAIL D
ASSEMBLY 'A' - HEAD/SILL CONNECTION
(CMU SUBSTRATE ONLY)

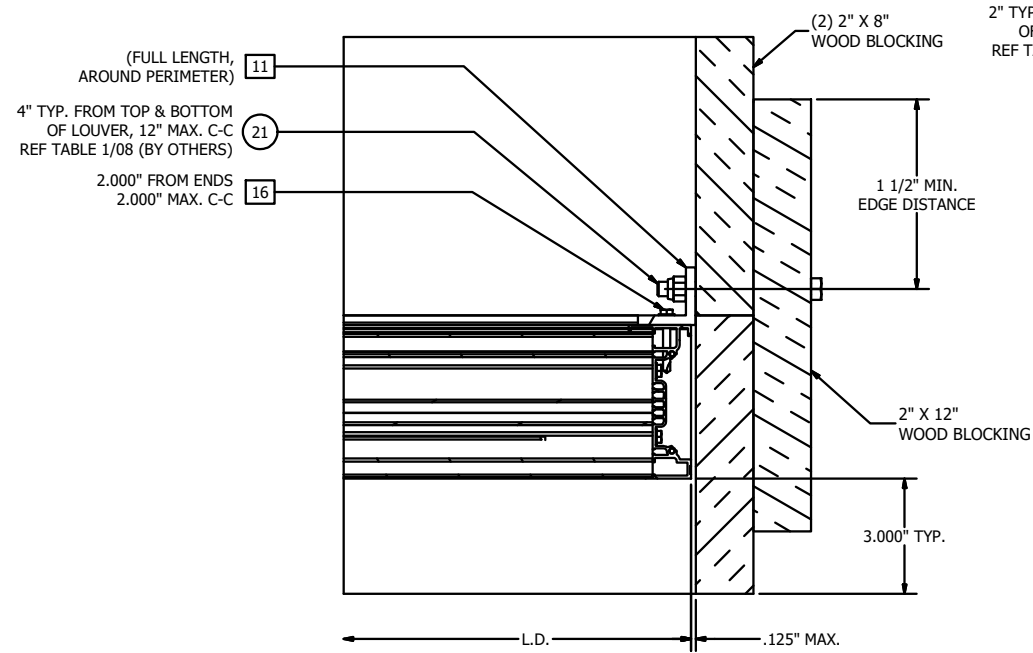


DETAIL E
ASSEMBLY 'A' - HEAD/SILL CONNECTION
(UNIVERSAL SLEEVE)

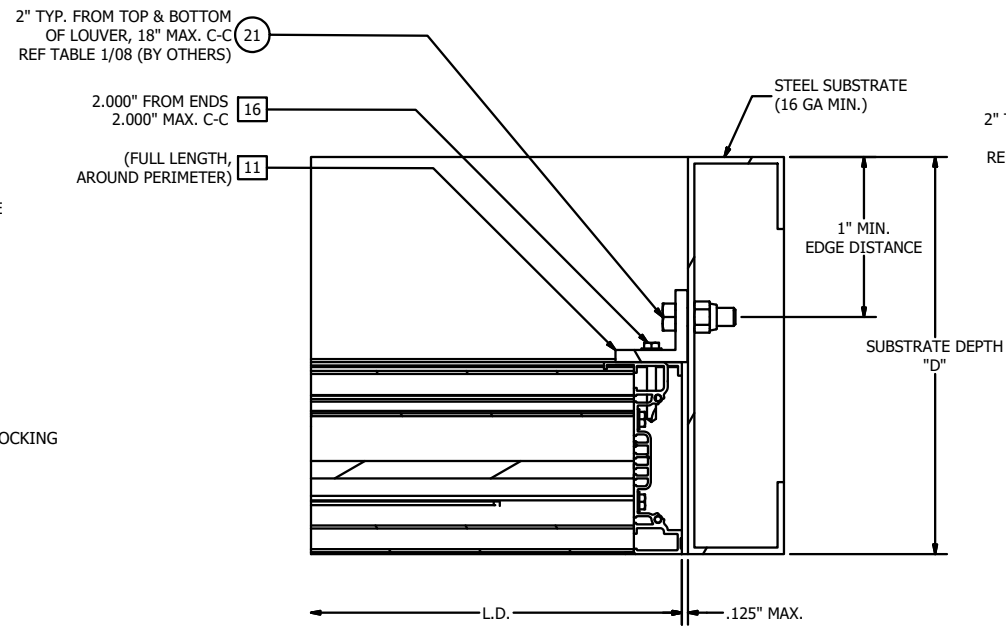
MELISSA M. MASSAR, P.E.
NO. 132158

A	REV'D ENGINEER OF RECORD, UPDATED INFO.	SSK	JDS	WRT	MMM	09/16/20
REV	DESCRIPTION	BY	CHK	APVD	APVD	DATE
AUTHOR	DRP	5/15/2012				
CHECKED						
APPROVED						
MATERIAL	EXTRUDED ALUMINUM	PRODUCT	EME420MD - WIND DRIVEN RAIN RESISTANT LOUVER	3900 Doctor Greaves Road, Grandview, MO 64030 PROPRIETARY AND CONFIDENTIAL		
TITLE	ASSEMBLY "A" - HEAD/SILL INSTALL DETAILS					
SIZE	D	DWG NO	60-022379-00B	REV	A	
SCALE	NTS	INVENTOR		SHEET 2 OF 10		

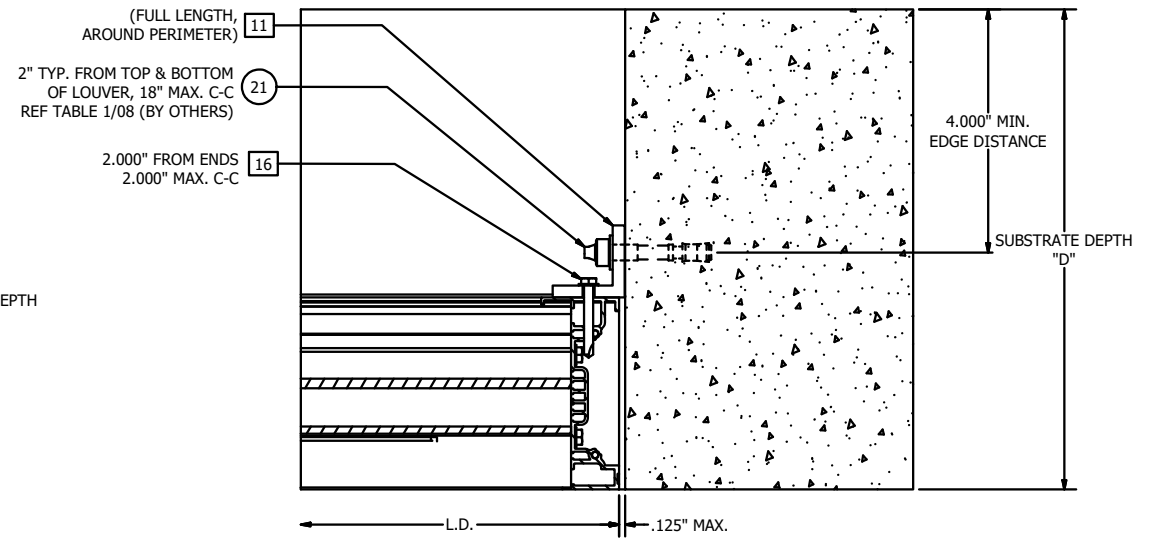
Tolerances
Unless Stated Otherwise Use WIQ-007, WIQ-008
Fractions ±1/16
Two Decimals ±0.020
Three Decimals ±0.010
Angle Dimensions ±z



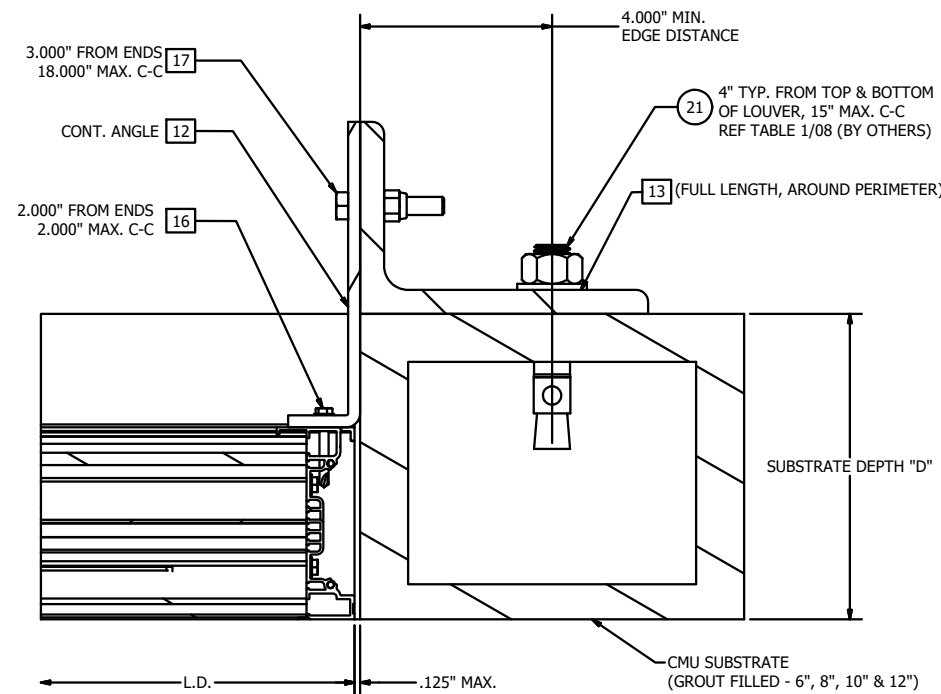
DETAIL F
ASSEMBLY 'A', 'B' & 'C' - JAMB CONNECTION
(WOOD SUBSTRATE)



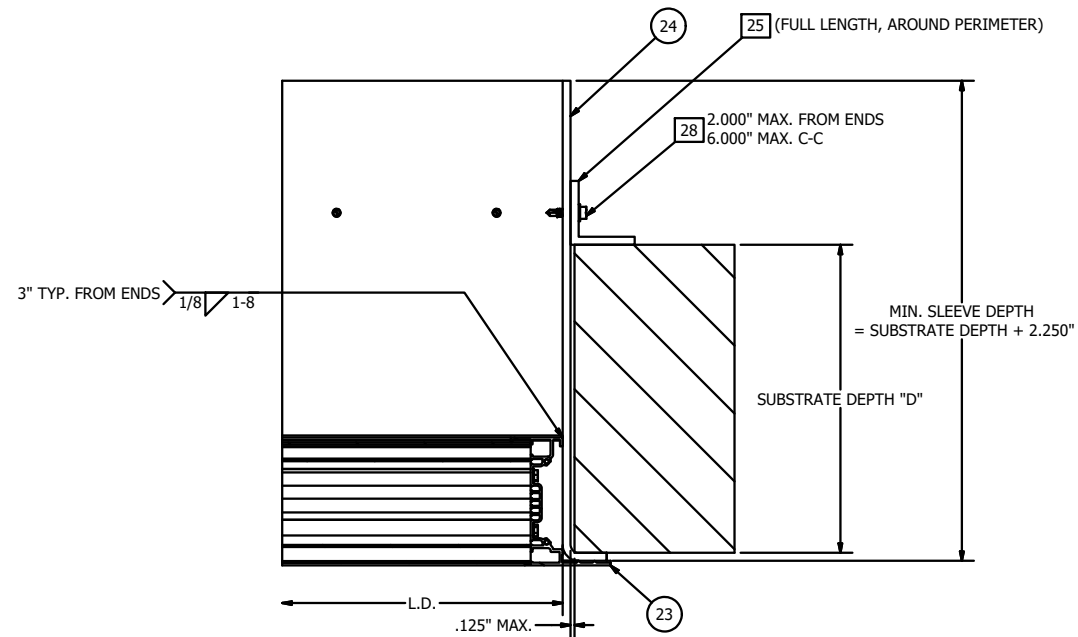
DETAIL G
ASSEMBLY 'A', 'B' & 'C' - JAMB CONNECTION
(STEEL SUBSTRATE)



DETAIL H
ASSEMBLY 'A', 'B' & 'C' - JAMB CONNECTION
(CONCRETE SUBSTRATE)



DETAIL J
ASSEMBLY 'A', 'B' & 'C' - JAMB CONNECTION
(CMU SUBSTRATE)

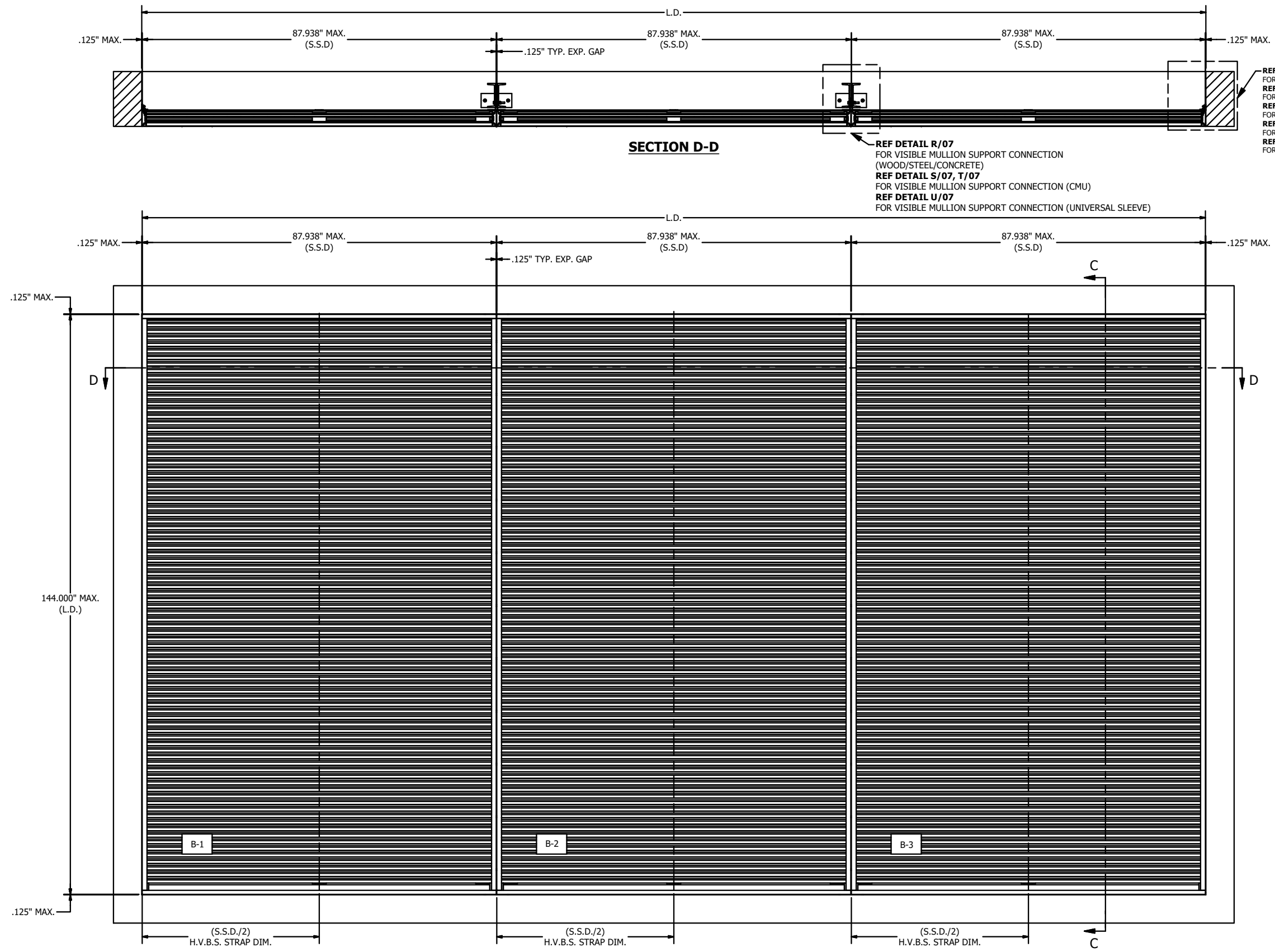


DETAIL K
ASSEMBLY 'A', 'B' & 'C' - JAMB CONNECTION
(UNIVERSAL SLEEVE)



MELISSA M. MASSAR, P.E.
NO. 132158

Tolerances		A		REV'D ENGINEER OF RECORD, UPDATED		SSK	JDS	WRT	MMM	09/16/20
Unless Stated Otherwise		REV		INFO.		BY	CHK	APVD	APVD	DATE
Use WJQ-007, WJQ-008		AUTHOR		DESCRIPTION						
Fractions ±1/16		CHECKED		DRP		5/15/2012				
Two Decimals ±0.020		APPROVED								
Three Decimals ±0.010		MATERIAL		EXTRUDED ALUMINUM		PRODUCT		EME420MD - WIND DRIVEN RAIN RESISTANT LOUVER		
Angle Dimensions ±2		SIZE		D		TITLE		ASSEMBLY "A", "B" & "C" - JAMB INSTALL DETAILS		REV
		SCALE		NTS		DWG NO		60-022379-00B		A
		INVENTOR		SHEET		NO.		3 OF 10		

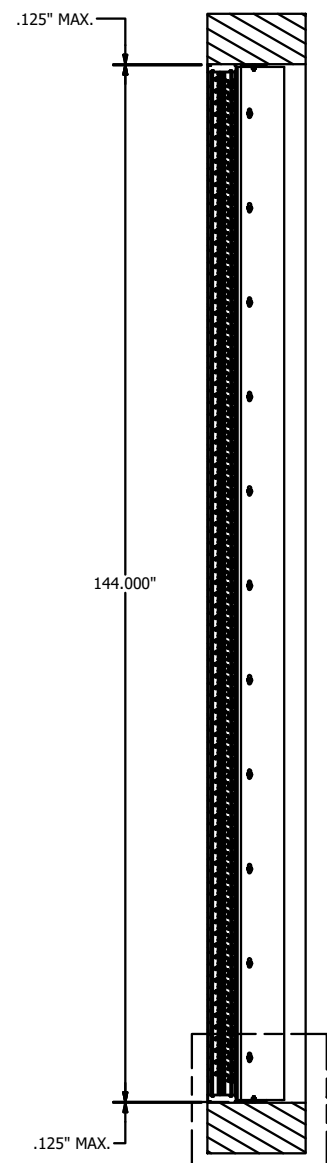


REF DETAIL F/03
FOR JAMB CONNECTION DETAIL (WOOD)
REF DETAIL G/03
FOR JAMB CONNECTION DETAIL (STEEL)
REF DETAIL H/03
FOR JAMB CONNECTION DETAIL (CONCRETE)
REF DETAIL J/03
FOR JAMB CONNECTION DETAIL (CMU)
REF DETAIL K/03
FOR JAMB CONNECTION DETAIL (UNIVERSAL SLEEVE)

REF DETAIL R/07
FOR VISIBLE MULLION SUPPORT CONNECTION
(WOOD/STEEL/CONCRETE)
REF DETAIL S/07, T/07
FOR VISIBLE MULLION SUPPORT CONNECTION (CMU)
REF DETAIL U/07
FOR VISIBLE MULLION SUPPORT CONNECTION (UNIVERSAL SLEEVE)



MELISSA M. MASSAR, P.E.
NO. 132158



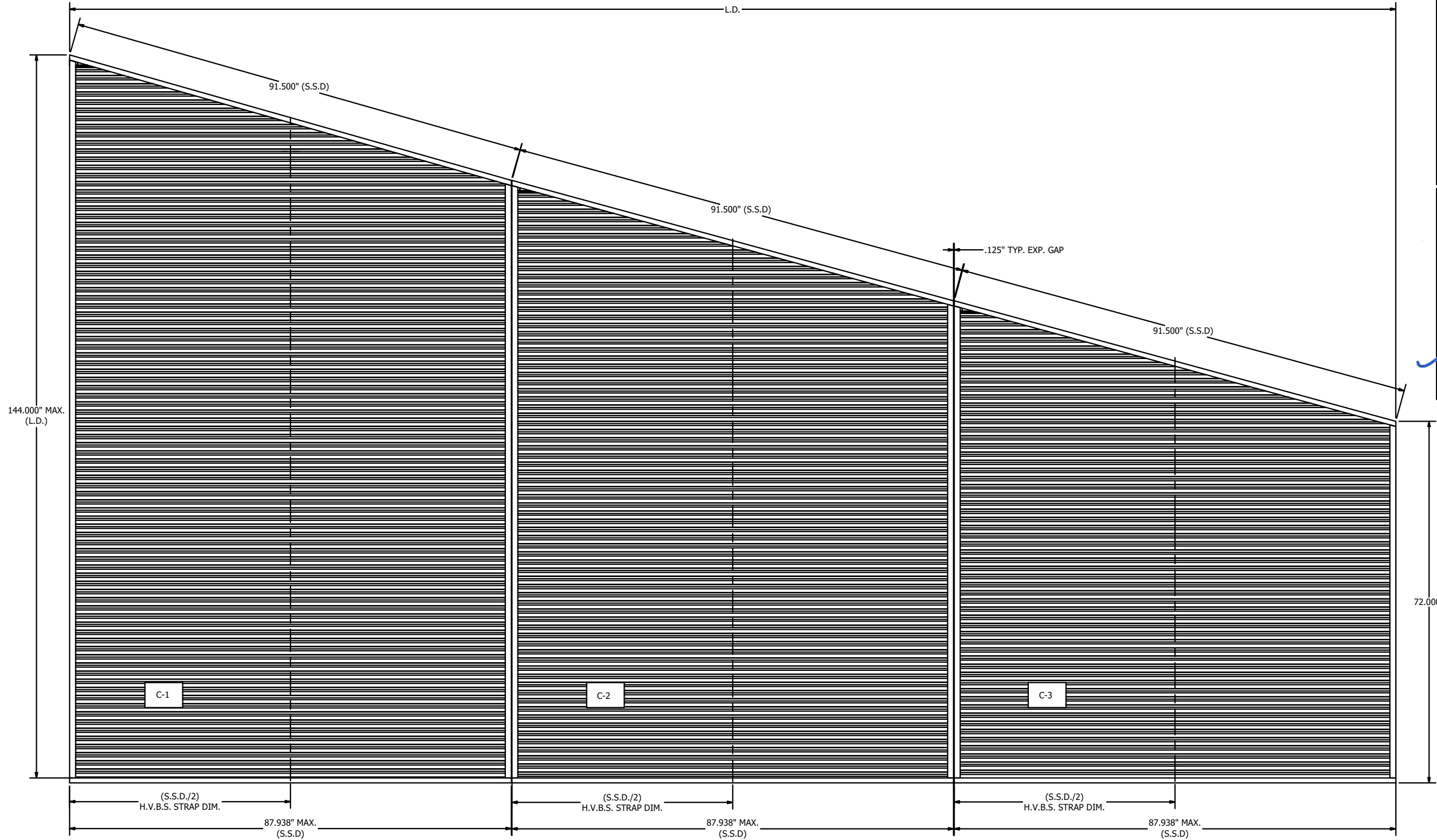
REF DETAIL L/06
FOR MULLION SUPPORT ATTACHMENT
PLATE INSTALLATION DETAIL @ SILL(WOOD)
REF DETAIL M/06
FOR MULLION SUPPORT ATTACHMENT
PLATE INSTALLATION DETAIL @ SILL (STEEL)
REF DETAIL N/06
FOR MULLION SUPPORT ATTACHMENT
PLATE INSTALLATION DETAIL @ SILL (CONCRETE)
REF DETAIL P/06
FOR MULLION SUPPORT ATTACHMENT
PLATE INSTALLATION DETAIL @ SILL (CMU)
REF DETAIL Q/06
FOR MULLION SUPPORT ATTACHMENT
(UNIVERSAL SLEEVE)

SECTION C-C

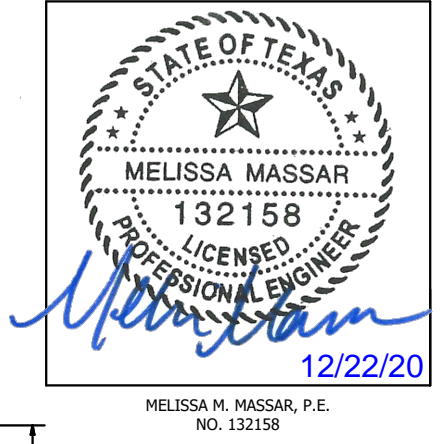
ASSEMBLY "B" - 3X1 MULTI SECTION VIEW
MAX. SHIP SECTION : 87.938" W X 144" H

Tolerances
Unless Stated Otherwise
Use WIQ-007, WIQ-008
Fractions ±1/16
Two Decimals ±0.020
Three Decimals ±0.010
Angle Dimensions ±2

A	REV'D ENGINEER OF RECORD, UPDATED INFO.	SSK	JDS	WRT	MMM	09/16/20
REV	DESCRIPTION	BY	CHK	APVD	APVD	DATE
AUTHOR	DRP	5/15/2012				
CHECKED						
APPROVED						
MATERIAL	EXTRUDED ALUMINUM	PRODUCT	EME420MD - WIND DRIVEN RAIN RESISTANT LOUVER	3900 Doctor Greaves Road, Grandview, MO 64030 PROPRIETARY AND CONFIDENTIAL		
TITLE	EME420MD - ASSEMBLY "B"					
SIZE	D	DWG NO	60-022379-00B	REV	A	
SCALE	NTS	INVENTOR		SHEET 4 OF 10		



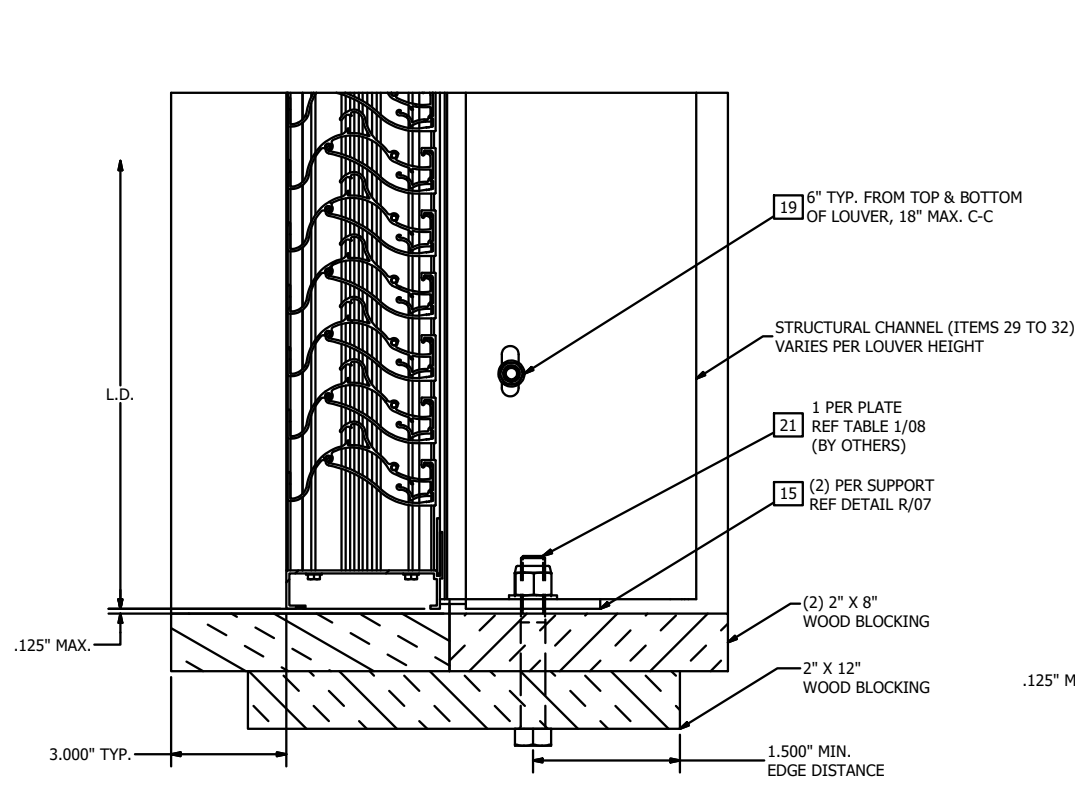
ASSEMBLY "C" - 3X1 MULTI SECTION VIEW
 MAX. SHIP SECTION : 87.938" W X 144" H



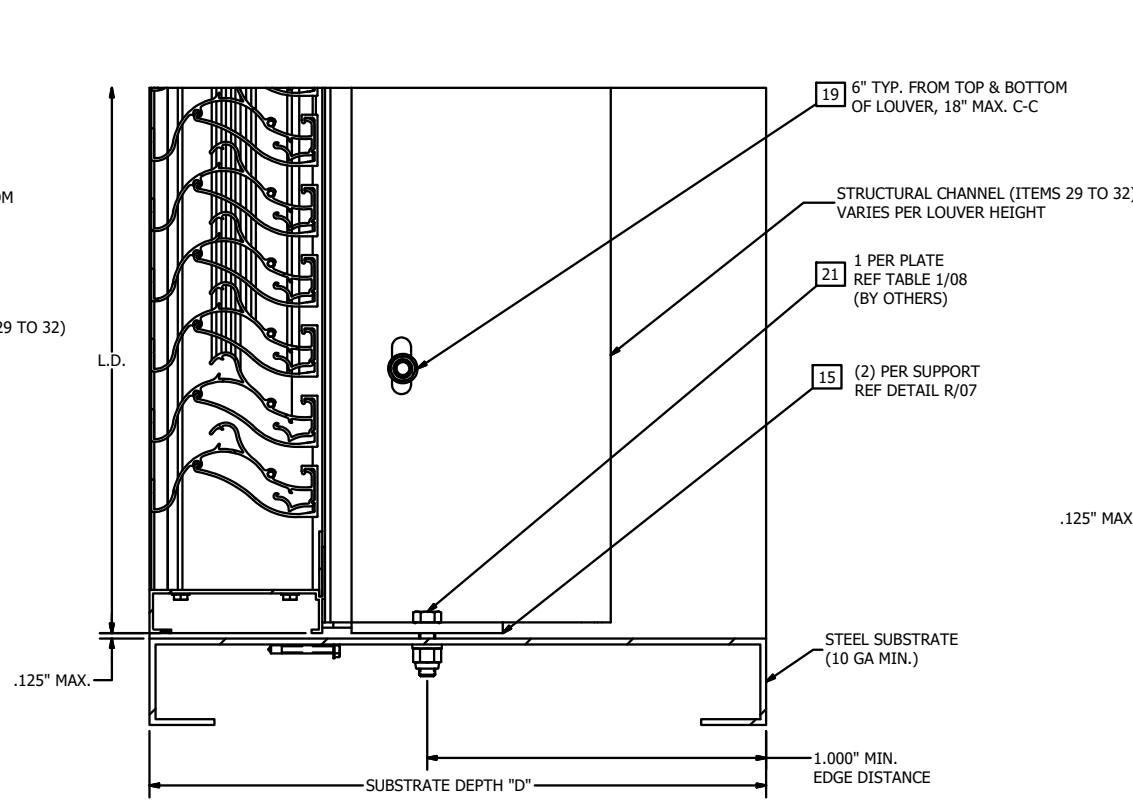
MELISSA M. MASSAR, P.E.
 NO. 132158

Tolerances
 Unless Stated Otherwise
 Use WIQ-007, WIQ-008
 Fractions ±1/16
 Two Decimals ±0.020
 Three Decimals ±0.010
 Angle Dimensions ±2'

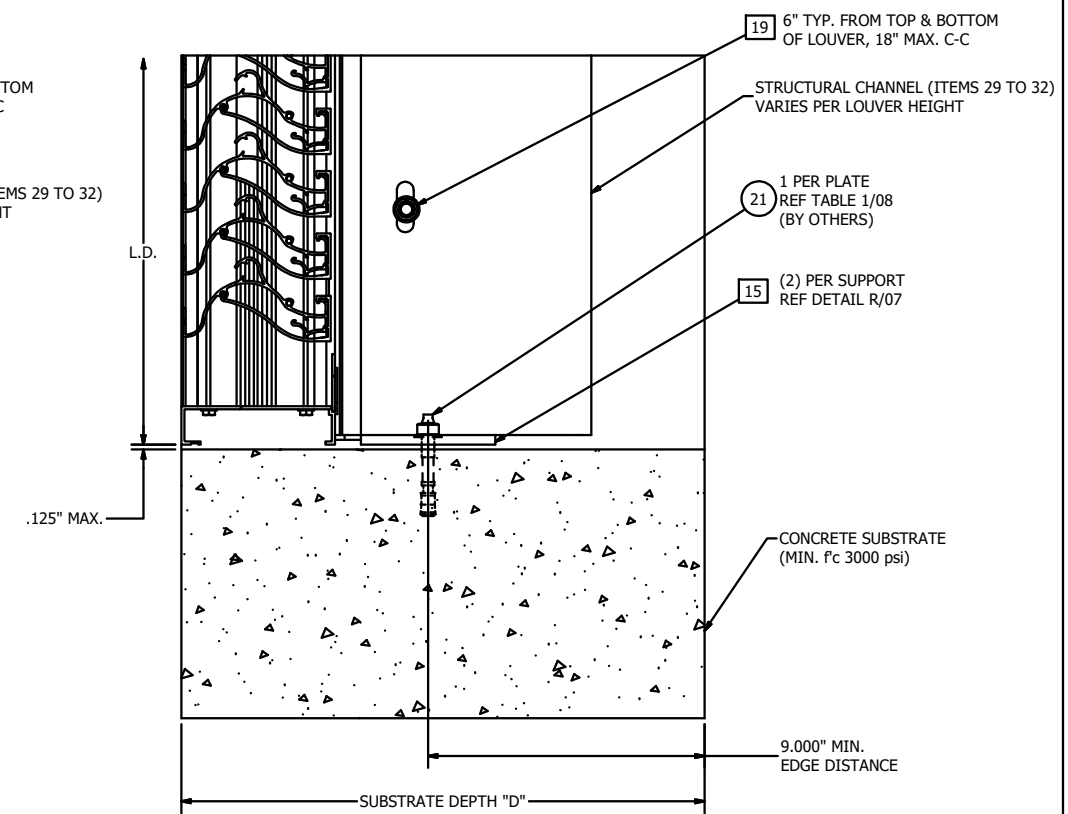
A	REV'D ENGINEER OF RECORD, UPDATED INFO.	SSK	JDS	WRT	MMM	09/16/20
REV	DESCRIPTION	BY	CHK	APVD	APVD	DATE
AUTHOR	DRP	5/15/2012				
CHECKED						
APPROVED						
MATERIAL	EXTRUDED ALUMINUM					
PRODUCT	EME420MD - WIND DRIVEN RAIN RESISTANT LOUVER	3900 Doctor Greaves Road, Grandview, MO 64030 PROPRIETARY AND CONFIDENTIAL				
TITLE	EME420MD - ASSEMBLY "C"					
SIZE	D	DWG NO	60-022379-00B	REV	A	
SCALE	NTS	INVENTOR		SHEET	5 OF 10	



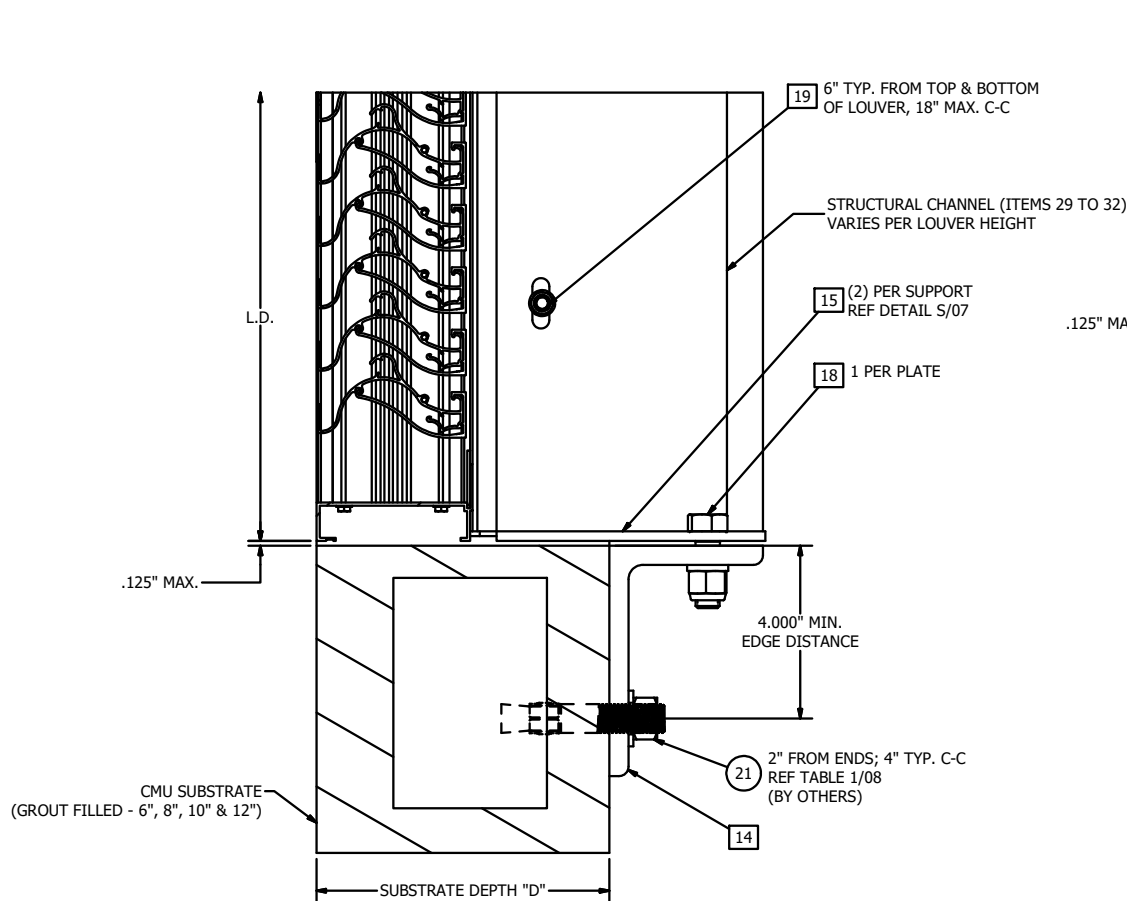
DETAIL L
ASSEMBLY 'B' & 'C' - MULLION SUPPORT ATTACHMENT PLATE INSTALLATION
@ HEAD/SILL (WOOD SUBSTRATE ONLY)



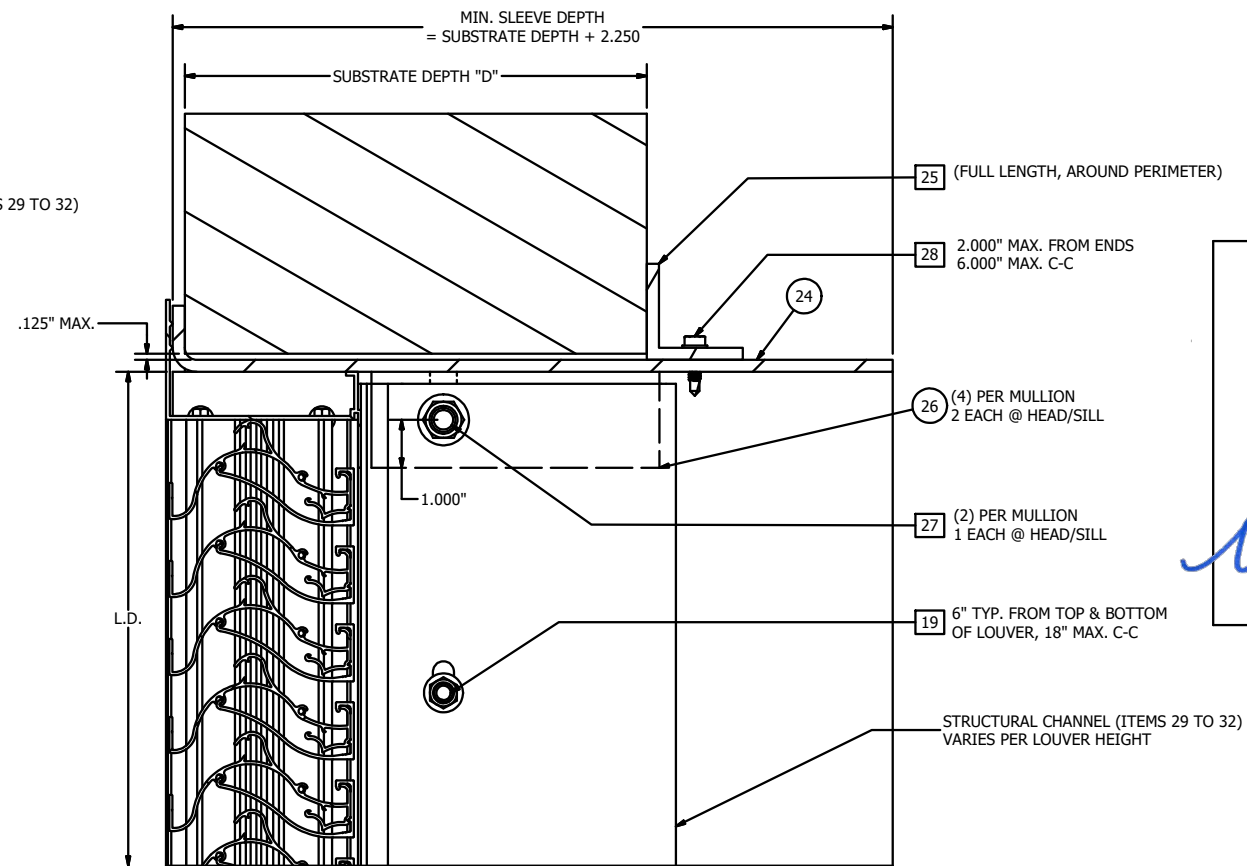
DETAIL M
ASSEMBLY 'B' & 'C' - MULLION SUPPORT ATTACHMENT PLATE INSTALLATION
@ HEAD/SILL (STEEL SUBSTRATE ONLY)



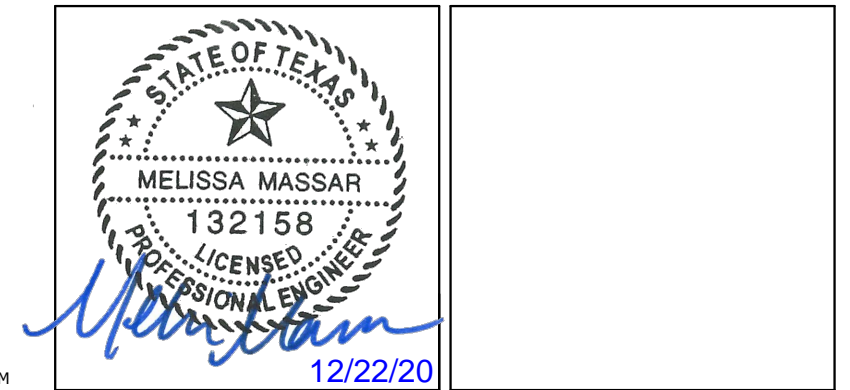
DETAIL N
ASSEMBLY 'B' & 'C' - MULLION SUPPORT ATTACHMENT PLATE INSTALLATION
@ HEAD/SILL (CONCRETE SUBSTRATE ONLY)



DETAIL P
ASSEMBLY 'B' & 'C' - MULLION SUPPORT ATTACHMENT PLATE INSTALLATION
@ HEAD/SILL (CMU SUBSTRATE ONLY)



DETAIL Q
ASSEMBLY 'B' & 'C' - MULLION SUPPORT ATTACHMENT PLATE INSTALLATION
@ HEAD/SILL (UNIVERSAL SLEEVE)

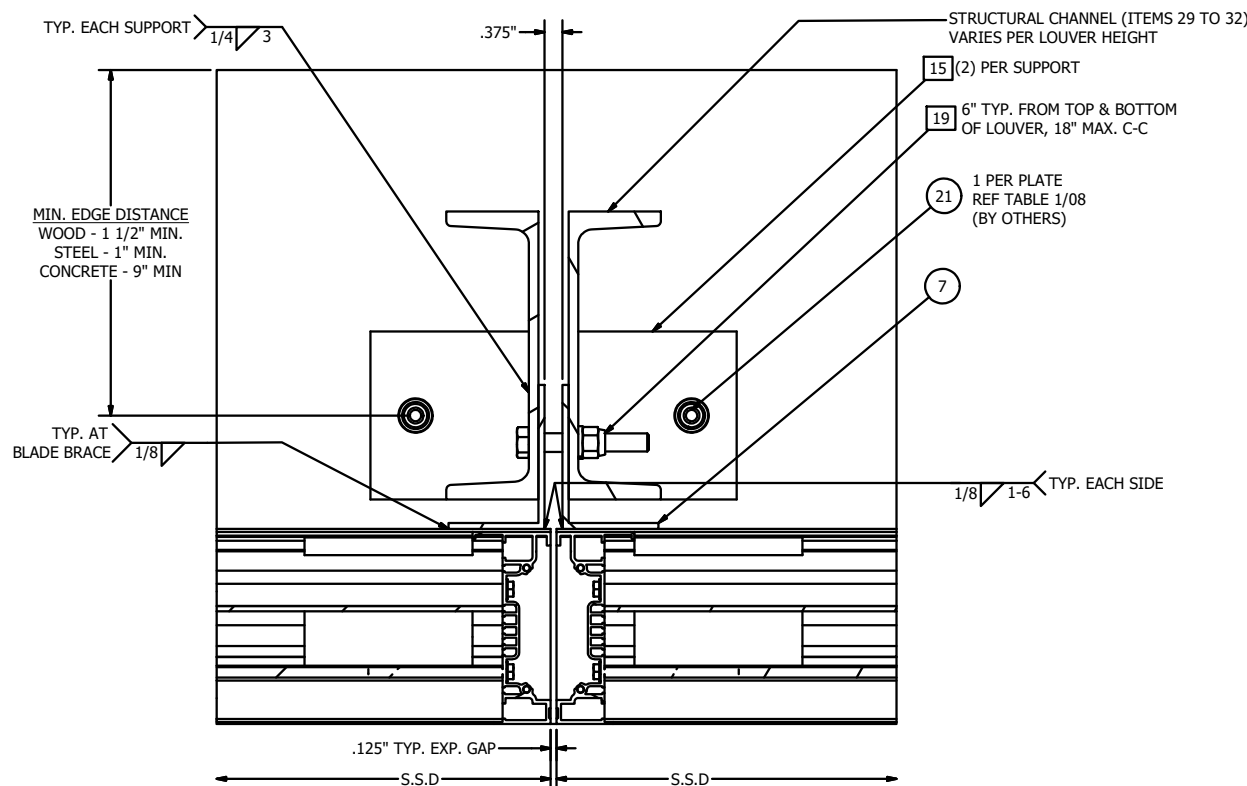


MELISSA M. MASSAR, P.E.
NO. 132158

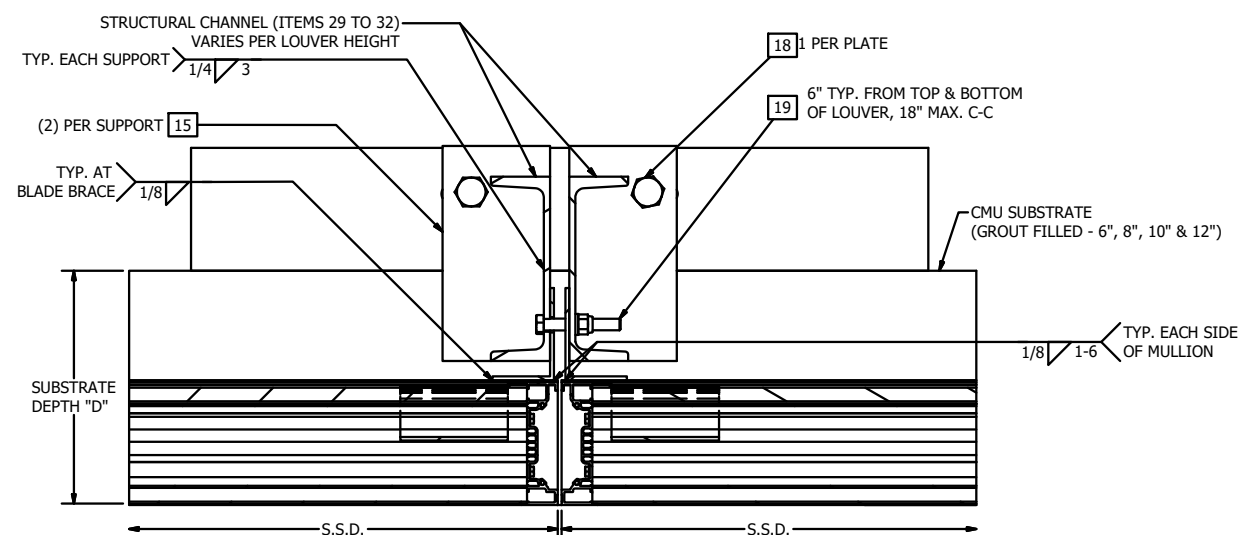
A	REV'D ENGINEER OF RECORD, UPDATED INFO.	SSK	JDS	WRT	MMM	09/16/20
REV	DESCRIPTION	BY	CHK	APVD	APVD	DATE
AUTHOR	DRP	5/15/2012				
CHECKED						
APPROVED						
MATERIAL	EXTRUDED ALUMINUM					
PRODUCT	EME420MD - WIND DRIVEN RAIN RESISTANT LOUVER					
TITLE	ASSEMBLY 'B' & 'C' - MULLION SUPPORT CONNECTION @ HEAD/SILL DETAILS					
SIZE	D	DWG NO	60-022379-00B	REV	A	
SCALE	NTS	INVENTOR		SHEET	6 OF 10	

Tolerances
Unless Stated Otherwise
Use W1Q-007, W1Q-008

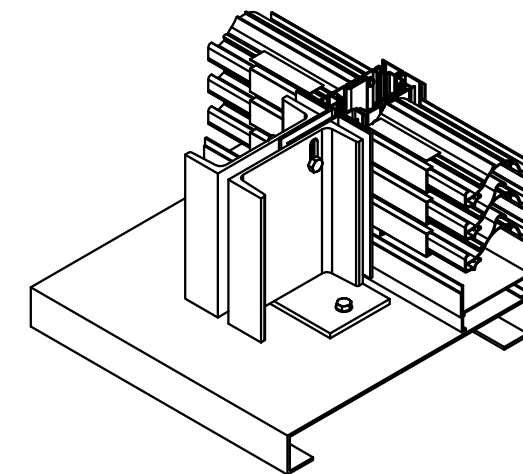
Fractions	±1/16
Two Decimals	±0.020
Three Decimals	±0.010
Angle Dimensions	±2



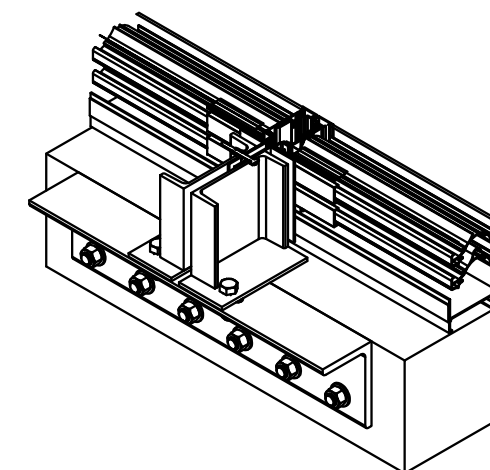
DETAIL R
ASSEMBLY 'B' & 'C' - VISIBLE MULLION SUPPORT CONNECTION DETAIL
(WOOD, METAL, CONCRETE SUBSTRATE ONLY)



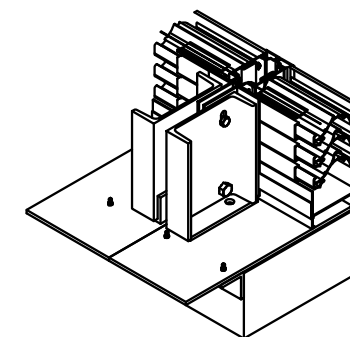
DETAIL S
ASSEMBLY 'B' & 'C' - VISIBLE MULLION SUPPORT CONNECTION DETAIL
(CMU SUBSTRATE ONLY)



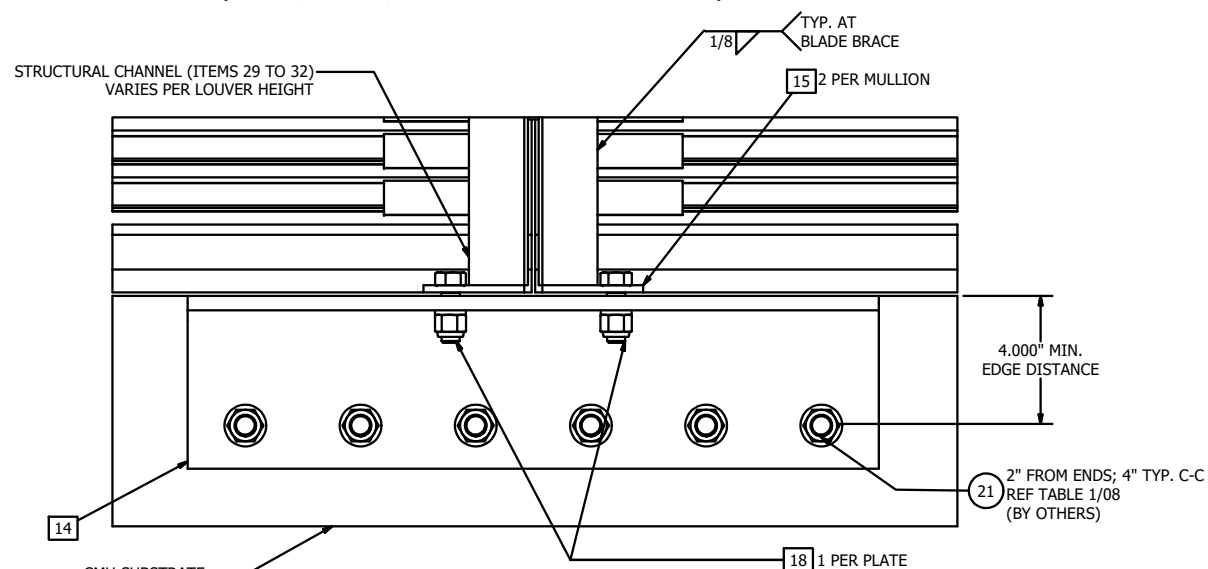
STEEL (SHOWN) ATTACHMENT
(WOOD, CONCRETE SIM.)
(REF DETAIL R/07)



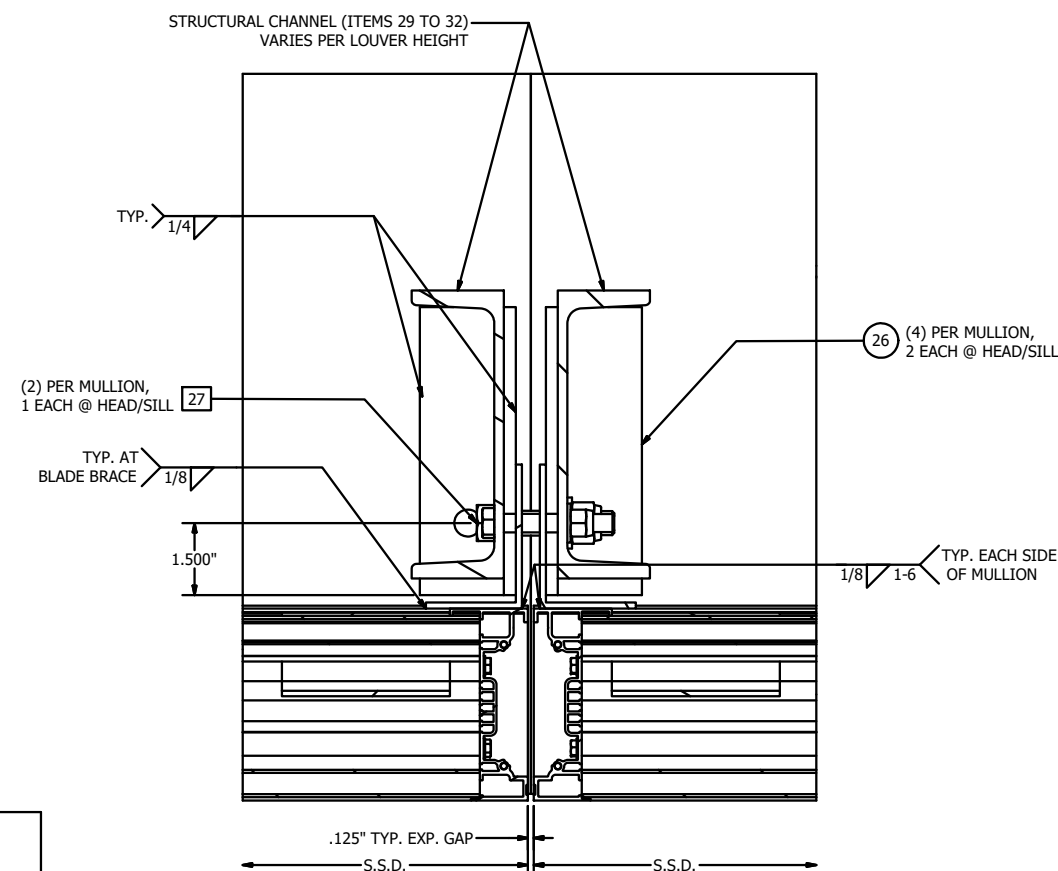
CMU (SHOWN) ATTACHMENT
(REF DETAIL S/07)



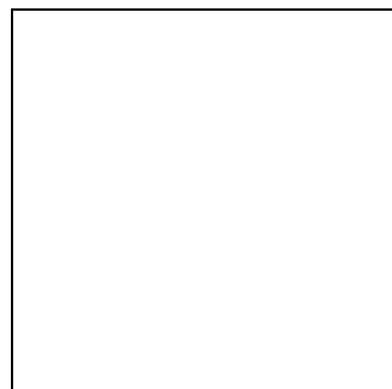
UNIVERSAL SLEEVE ATTACHMENT
(REF DETAIL U/07)



DETAIL T
ASSEMBLY 'B' & 'C' - VISIBLE MULLION SUPPORT CONNECTION DETAIL
(CMU SUBSTRATE ONLY)



DETAIL U
ASSEMBLY 'B' & 'C' - VISIBLE MULLION SUPPORT BRACKET
ATTACHMENT DETAIL (UNIVERSAL SLEEVE)



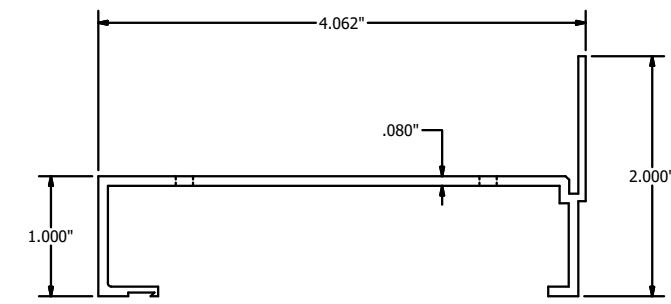
MELISSA M. MASSAR, P.E.
NO. 132158

Tolerances
Unless Stated Otherwise
Use WJQ-007, WJQ-008
Fractions ±1/16
Two Decimals ±0.020
Three Decimals ±0.010
Angle Dimensions ±2

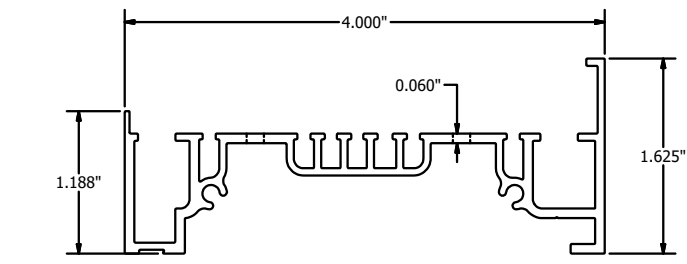
A	REV'D ENGINEER OF RECORD, UPDATED INFO.	SSK	JDS	WRT	MMM	09/16/20
REV	DESCRIPTION	BY	CHK	APVD	APVD	DATE
AUTHOR	DRP	5/15/2012				
CHECKED						
APPROVED						
MATERIAL	EXTRUDED ALUMINUM	PRODUCT	EME420MD - WIND DRIVEN RAIN RESISTANT LOUVER			
TITLE	ASSEMBLY "B" & "C" - VISIBLE MULLION SUPPORT CONNECTION DETAILS					
SIZE		DWG NO	60-022379-00B		REV	A
D		SCALE	NTS		INVENTOR	SHEET 7 OF 10
ECN						

TABLE 01 - EME420MD - WALL FASTENER TABLE (N.I.C.)

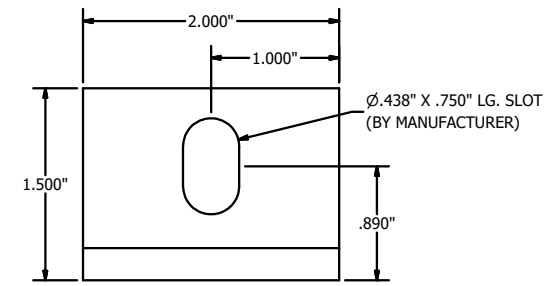
SUBSTRATE TYPE	MIN. SUBSTRATE REQUIREMENTS	LOCATION	FASTENER TYPE	MIN. EMBEDMENT	MIN. EDGE DISTANCE
WOOD	SPECIFIC GRAVITY = 0.4	MULLION SUPPORT (END PLATE)	5/8-11 A307 HEX HEAD BOLT W NUT AND WASHER	NA	1 1/2"
		HEAD/SILL/JAMBS	3/8-16 GRADE 2 HEX HEAD BOLT W LOCKNUT AND WASHER (UNDER BOLT HEAD & LOCKNUT)	NA	1 1/2"
STEEL	STEEL - MIN. 10 GA	HEAD/SILL	1/4" Ø A307 BOLT W LOCKNUT AND WASHER	NA	1"
		MULLION SUPPORT (END PLATE)	5/8-11 A307 HEX HEAD BOLT W NUT AND WASHER	NA	1"
		JAMBS	3/8-16 GRADE 2 HEX HEAD BOLT W LOCKNUT AND WASHER	NA	1"
CONCRETE	3000 PSI MIN. COMPRESSIVE STRENGTH	HEAD/SILL	1/4" Ø HILTI KWIK BOLT HUS-EZ WITH WASHERS	1 5/8"	4"
		MULLION SUPPORT (END PLATE)	5/8" Ø HILTI KWIK BOLT TZ EXPANSION ANCHORS	4"	4"
		JAMBS	3/8" Ø HILTI KWIK BOLT TZ EXPANSION ANCHORS	2"	9"
GROUT FILLED CMU (6", 8", 10" & 12")	ASTM C-90 BLOCK, 1500 PSI GROUT COMP. STRENGTH	HEAD/SILL	1/4" Ø HILTI KWIK BOLT III EXPANSION ANCHORS (1 PER CELL)	2"	4"
		MULLION SUPPORT (END PLATE)	3/4" Ø HILTI HIT-HY 270 ANCHOR (1 PER CELL, 1" MIN. FROM VERTICAL MORTAR JOINT)	4 1/4"	4"
		JAMBS	5/8" Ø HILTI KWIK BOLT III EXPANSION ANCHORS (1 PER CELL)	4"	4"



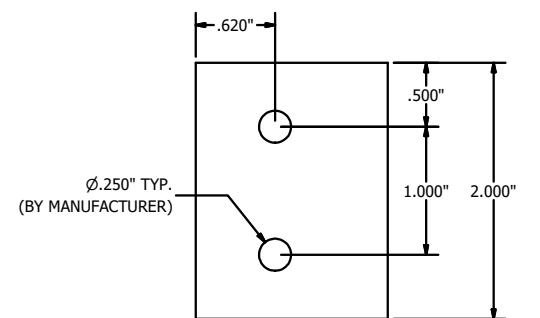
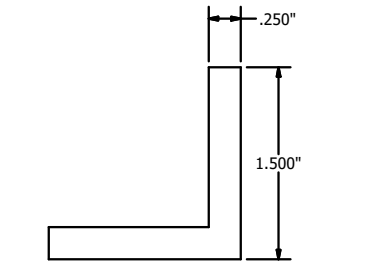
HEAD / SILL FRAME ITEM #01
RUSKIN #70-020025-00B



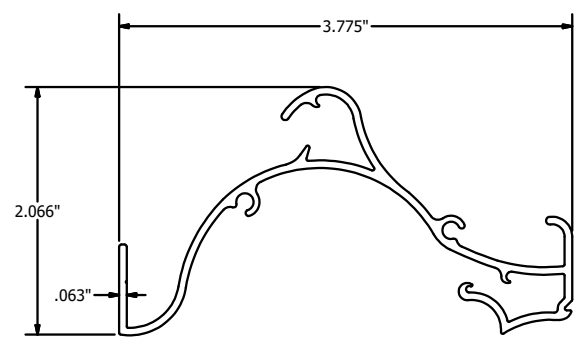
JAMB FRAME ITEM #02
RUSKIN #70-021959-00B



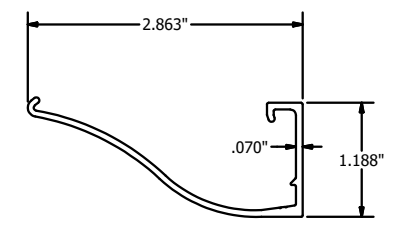
ATTACHMENT CLIP ANGLE, 2" LG. ITEM#08
RUSKIN #85-021637-00B



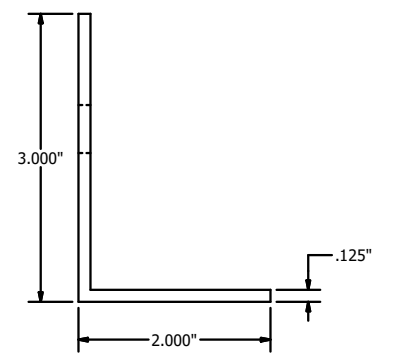
MELISSA M. MASSAR, P.E.
NO. 132158



BLADE ITEM #03
RUSKIN #70-022546-00B



BLADE BRACE ITEM #04
RUSKIN #70-023887-00B

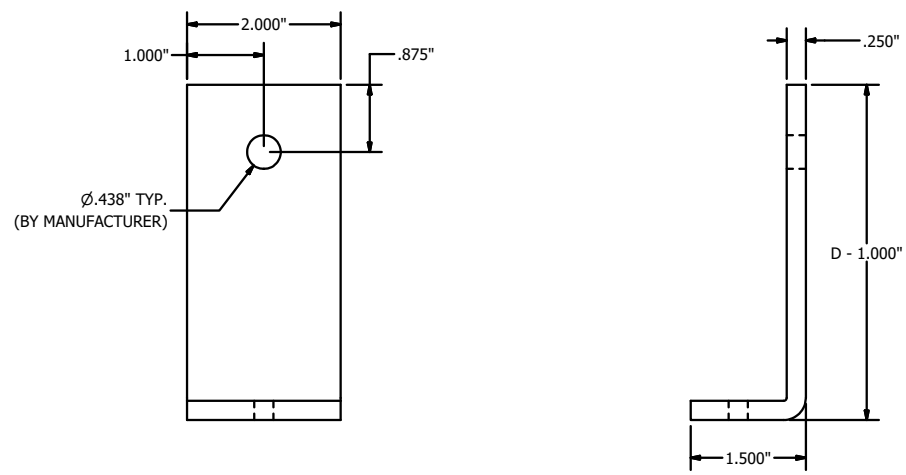


MULLION SUPPORT ANGLE ITEM#07
RUSKIN #A1139

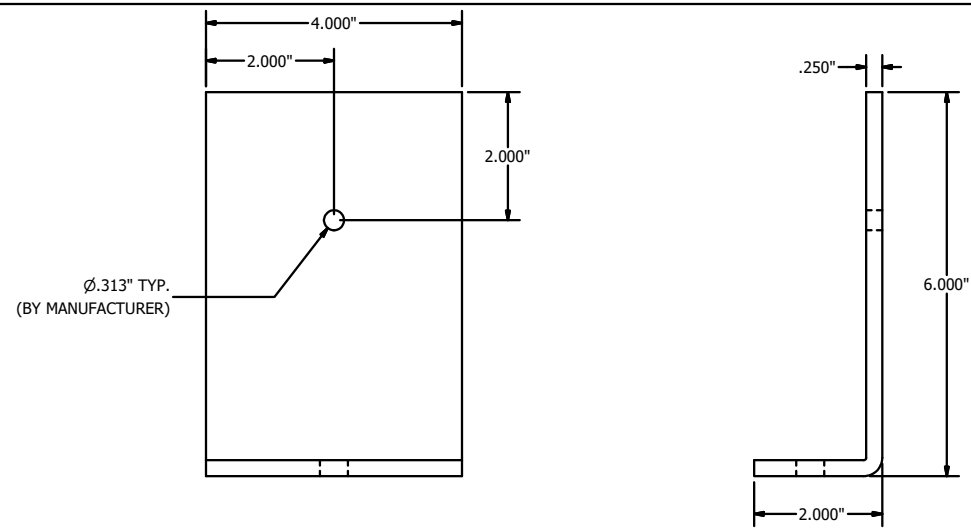
Tolerances
Unless Stated Otherwise
Use W/Q-007, W/Q-008

Fractions	±1/16
Two Decimals	±0.020
Three Decimals	±0.010
Angle Dimensions	±Z

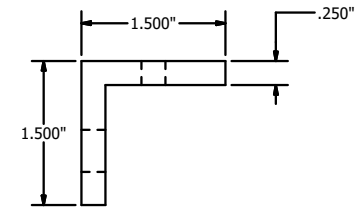
REV	DESCRIPTION	BY	CHK	APVD	APVD	DATE
A	REV'D ENGINEER OF RECORD, UPDATED INFO. REV'D BLADE BRACE INFO.	SSK	JDS	WRT	MMM	09/16/20
AUTHOR	DRP	5/15/2012				
CHECKED						
APPROVED						
MATERIAL	EXTRUDED ALUMINUM					
PRODUCT	EME420MD - WIND DRIVEN RAIN RESISTANT LOUVER					
TITLE	SUBSTRATE FASTENER TABLE, EME420MD PARTS					
SIZE	D	DWG NO	60-022379-00B	REV	A	
SCALE	NTS	INVENTOR	SHEET 8 OF 10			



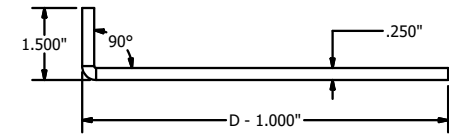
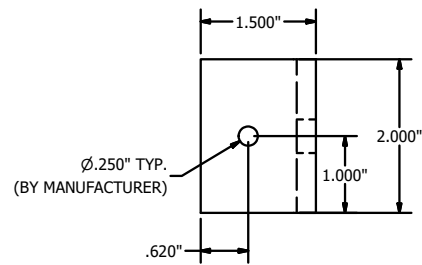
CLIP ANGLE - FORMED, 2" LG. ITEM#09
RUSKIN #N/A



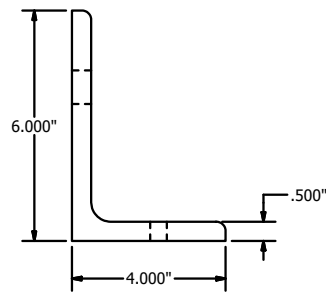
CLIP ANGLE - FORMED, 4" LG. ITEM#10
RUSKIN #N/A



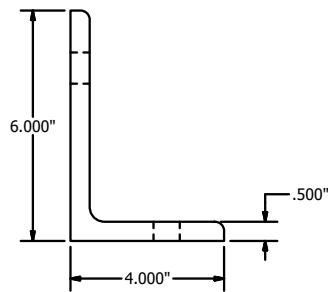
CONT. ATTACHMENT ANGLE ITEM #11
RUSKIN #85-022850-00B



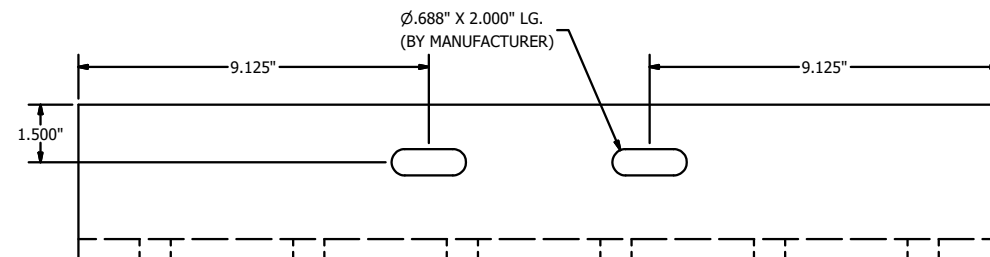
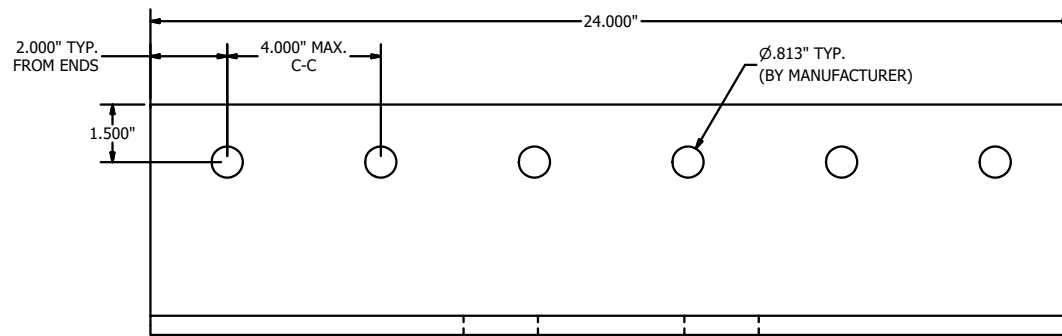
ALTERNATE CONT. ATTACHMENT ANGLE ITEM #12
RUSKIN #85-022849-00B



CONT. STRUCTURAL ATTACHMENT ANGLE ITEM #13
RUSKIN #85-022852-00B




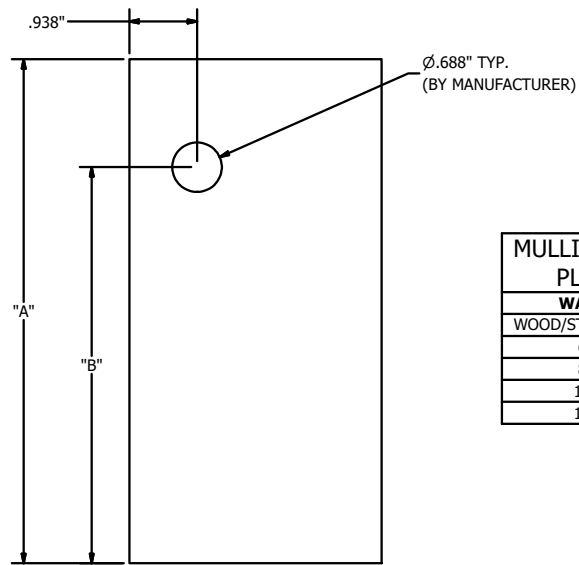
CONT. STRUCTURAL ATTACHMENT ANGLE ITEM #14
RUSKIN #85-022853-00B



MELISSA M. MASSAR, P.E.
NO. 132158

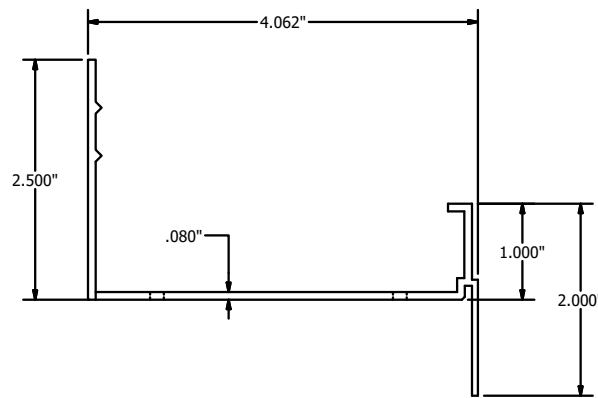
Tolerances	
Unless Stated Otherwise	Use WIQ-007, WIQ-008
Fractions	±1/16
Two Decimals	±0.020
Three Decimals	±0.010
Angle Dimensions	±Z

A	REV'D ENGINEER OF RECORD, UPDATED INFO.	SSK	JDS	WRT	MMM	09/16/20
REV	DESCRIPTION	BY	CHK	APVD	APVD	DATE
AUTHOR	DRP	5/15/2012				
CHECKED						
APPROVED						
MATERIAL	EXTRUDED ALUMINUM	 3900 Doctor Greaves Road, Grandview, MO 64030 PROPRIETARY AND CONFIDENTIAL				
PRODUCT	EME420MD - WIND DRIVEN RAIN RESISTANT LOUVER					
TITLE	EME420MD - PARTS					
SIZE	D	DWG NO	60-022379-00B		REV	A
SCALE	NTS	INVENTOR	SHEET 9 OF 10			

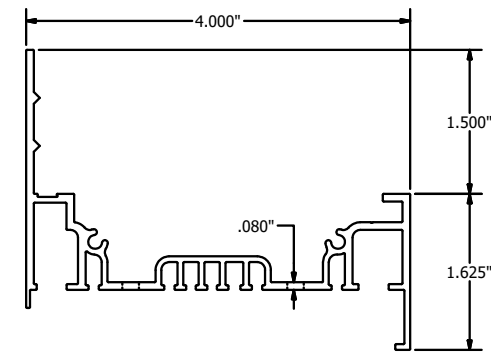


MULLION SUPPORT ATTACHMENT PLATE DIMENSION TABLE		
WALL TYPE	"A"	"B"
WOOD/STEEL/CONCRETE	3.500"	1.750"
6" CMU	5.000"	3.500"
8" CMU	7.000"	5.500"
10" CMU	9.000"	7.500"
12" CMU	11.000"	9.500"

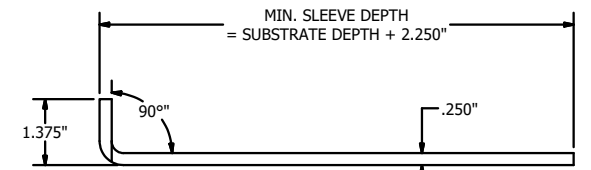
MULLION SUPPORT ATTACHMENT PLATE ITEM #15
RUSKIN #85-023137-00B



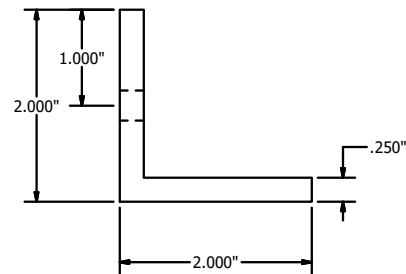
HEAD / SILL FRAME W/INTEGRAL FLANGE ITEM #22
RUSKIN #70-022725-00B



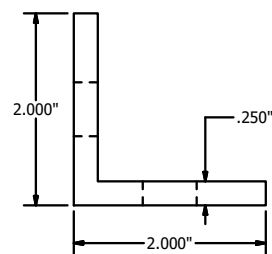
JAMB FRAME W/INTEGRAL FLANGE ITEM #23
RUSKIN #70-022726-00B



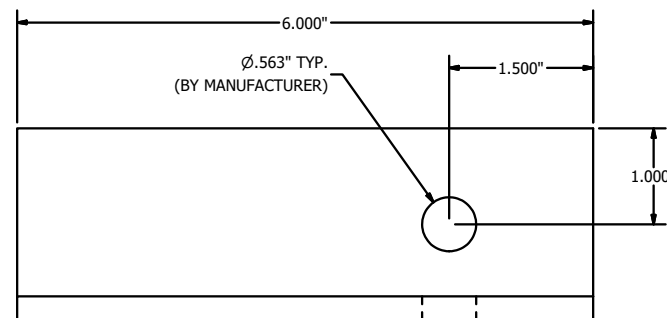
FRONT FLANGE UNIVERSAL SLEEVE ITEM #24



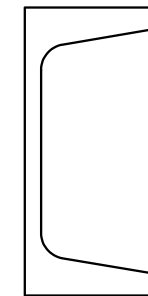
CONT. RETAINING ANGLE ITEM #25
RUSKIN #85-023107-00B



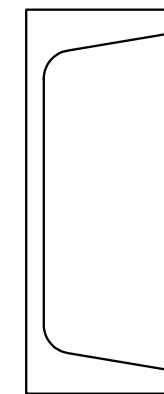
US - MULLION SUPPORT ATTACHMENT ANGLE ITEM #26
RUSKIN #85-023108-00B



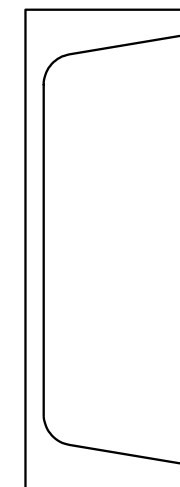
C3X4.1 ITEM #29



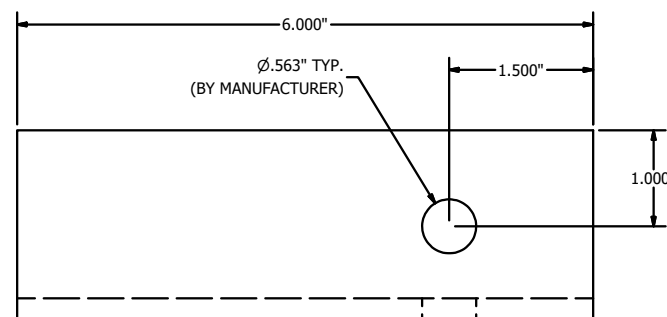
C4X5.4 ITEM #30



C5X6.7 ITEM #31



C6X8.7 ITEM #32



MELISSA M. MASSAR, P.E.
NO. 132158

Tolerances	
Unless Stated Otherwise	Use WIC-007, WIC-008
Fractions	±1/16
Two Decimals	±0.020
Three Decimals	±0.010
Angle Dimensions	±z

REV	DESCRIPTION	BY	CHK	APVD	APVD	DATE
A	REV'D ENGINEER OF RECORD, UPDATED INFO.	SSK	JDS	WRT	MMM	09/16/20
AUTHOR	DRP	5/15/2012				
CHECKED						
APPROVED						
MATERIAL	EXTRUDED ALUMINUM					
PRODUCT	EME420MD - WIND DRIVEN RAIN RESISTANT LOUVER					
TITLE	EME420MD - PARTS					
SIZE	DWG NO	60-022379-00B				REV
D						A
SCALE	NTS					SHEET 10 OF 10

RUSKIN
AUTHORITY IN AIR CONTROL
3900 Doctor Greaves Road,
Grandview, MO 64030
PROPRIETARY AND
CONFIDENTIAL