

Window Options:  
 1/8" DSB  
 1/4" Tempered Glass  
 7/16" Insulated Glass  
 7/16" Tempered Insulated Glass

Door Height	Section Quantity	Strut Quantity	Trk Brkt Per Side
6'-0" to 8'-0"	4	2	3
8'-3" to 10'-0"	5	3	4
10'-3" to 12'-0"	6	4	5
12'-3" to 14'-0"	7	5	6
14'-3" to 16'-0"	8	6	8
16'-3" to 18'-0"	9	7	9
18'-3" to 20'-0"	10	8	10
20'-3" to 22'-0"	11	9	12
22'-3" to 24'-0"	12	10	13

Track bracket quantities shown are for use with grade 2 or better southern pine jambs. When using softer wood species like spruce-pine-fir (SPF) use the quantity of track brackets specified in the chart plus one track bracket per side.

Supplemental Instructions contain details for doors up to 24'-0" high. These are required in addition to this drawing for installation. Always use supplemental instructions in addition to this drawing during door installation.

	SCALE	1/8" = 1'-0"
	DATE	2-18-2013
Models: 3212, 3216, 3285		
35.0 (psf) / - 39.2 (psf) at 09'-04" through 24.4 (psf) / - 27.3 (psf) at 11'-08"		
C.H.I. Drawing: TZ7-10-63313 page 1_of_2		

*John E. Scates*  
 2/22/13  
 John E. Scates, P.E.  
 3121 Fairgate Drive  
 Carrollton, Texas 75007  
 TXPE 56308, P-2203

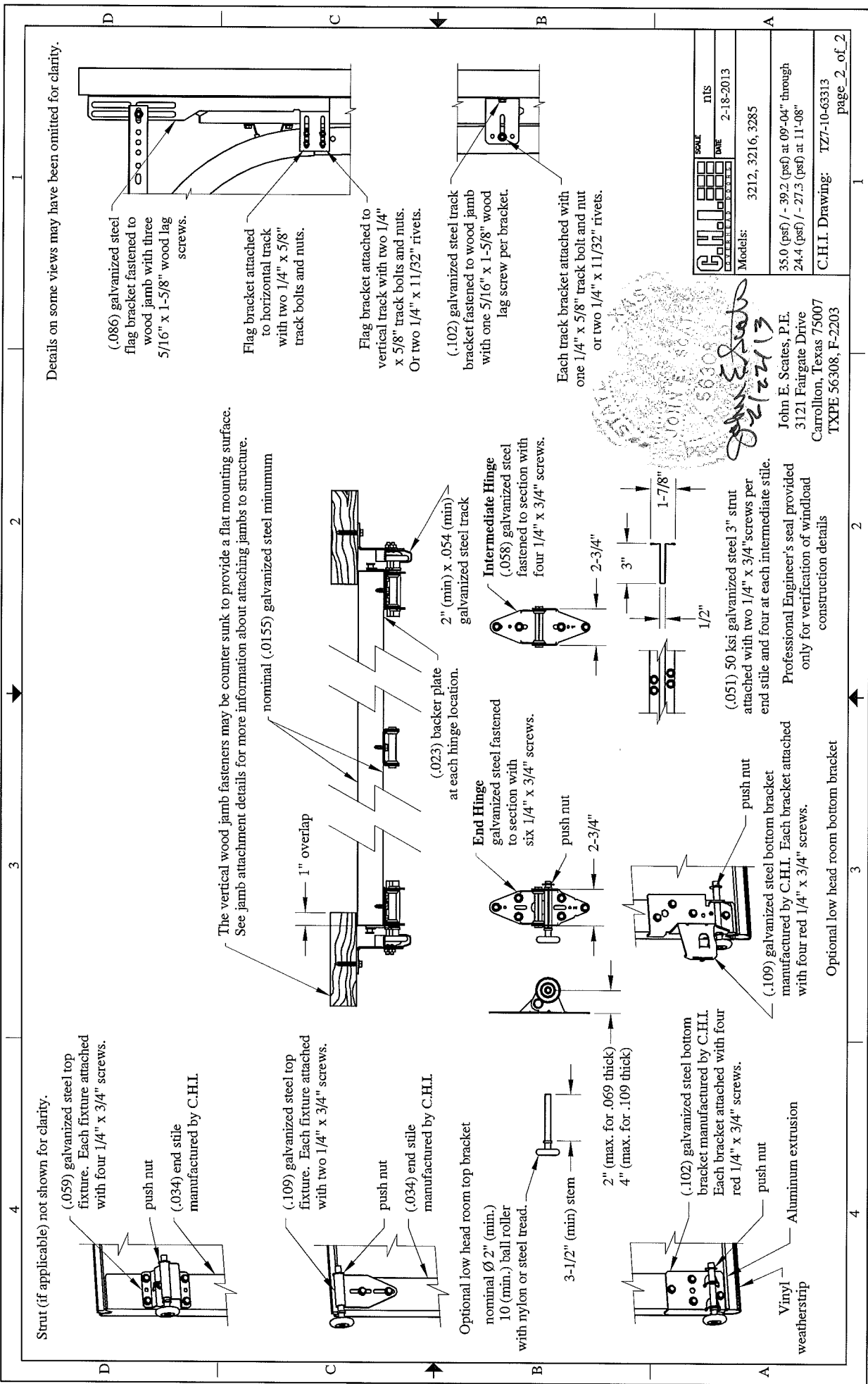


Supporting structural elements to be designed by registered professional engineer for specified wind loads. If door is not electrically operated, a lock must be installed.  
 Door height: 24'-0" max  
 Section height: 24" max  
 Professional Engineer's seal provided only for verification of windload construction details

This door has been evaluated per ASCE 7-02 & 7-05 as referenced by 2006 IBC 1609 & 2006 IRC 301, in accordance with ANSI/DASMA 108-02, 108-05, & ASTM E330-02. Design Pressures (DP) typically meet requirements for the following exposure B wind speeds. These wind speeds are for 8' high doors on buildings with a flat roof height less than 30 feet.

Door Width	With windows		No windows		Backer plates
	Design Pressure	Exp B	Design Pressure	Exp B	
11'-08"	24.4 / - 27.3 (psf)	131 (mph)	24.4 / - 27.3 (psf)	131 (mph)	2
11'-02"	26.6 / - 29.8 (psf)	137 (mph)	26.6 / - 29.8 (psf)	137 (mph)	2
10'-02"	32.1 / - 36.0 (psf)	150 (mph)	32.1 / - 36.0 (psf)	150 (mph)	2
09'-04"	32.1 / - 36.0 (psf)	149 (mph)	35.0 / - 39.2 (psf)	155 (mph)	1

Backer plate quantity is minimum per section.



Details on some views may have been omitted for clarity.

The vertical wood jamb fasteners may be counter sunk to provide a flat mounting surface. See jamb attachment details for more information about attaching jamb to structure.

C.H.I. DRAWING		DATE	2-18-2013
REVISED		BY	NTS
NO. 3212, 3216, 3285		Models:	
35.0 (psf) / -39.2 (psf) at 09'-04" through		24.4 (psf) / -27.3 (psf) at 11'-08"	
C.H.I. Drawing:		TZ7-10-63313	
		page 2 of 2	

John E. Scates, P.E.  
3121 Fairgate Drive  
Carrollton, Texas 75007  
TXPE 56308, F-2203

Professional Engineer's seal provided only for verification of windload construction details

Optional low head room bottom bracket

