

Door Height	Section	Quantity	Per Side
6'-0" to 8'-0"	4	6	4
8'-3" to 10'-0"	5	8	6
10'-3" to 12'-0"	6	10	7
12'-3" to 14'-0"	7	12	8
14'-3" to 16'-0"	8	14	10
16'-3" to 18'-0"	9	16	11
18'-3" to 20'-0"	10	18	13
20'-3" to 22'-0"	11	20	15
22'-3" to 24'-0"	12	22	17

Track bracket quantities shown are for use with grade 2 or better southern pine jamb. When using softer wood species like spruce-pine-fir (SPF) use the quantity of track brackets specified in the chart plus two track brackets per side.

Supplemental Instructions contain details for doors up to 24'-0" high. These are required in addition to this drawing for installation. Always use supplemental instructions in addition to this drawing during door installation.

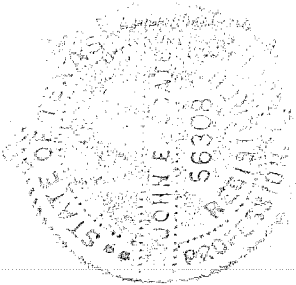
SCALE 1/8" = 1'-0"

DATE 2-12-2013

MODELS: 3220, 3221, 3222, 3240, 3241, 3242, 3250, 3251, 3252

40.6 (psf) / - 49.9 (psf) at 11'-00" through 29.1 (psf) / - 35.7 (psf) at 13'-08"

C.H.I.L. Drawing: TZ8-12-61313 page 1 of 2



John E. Scates
2/15/13

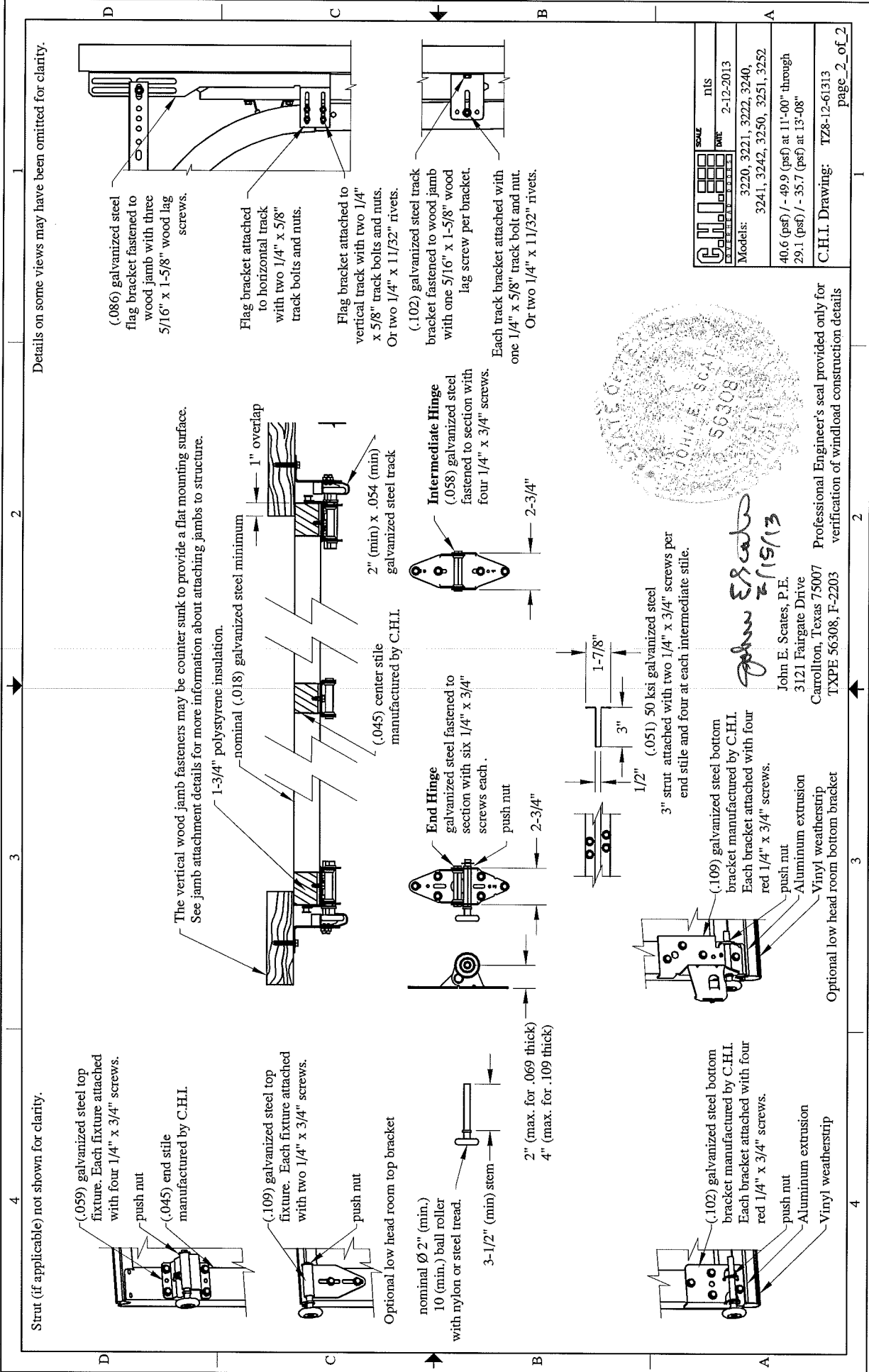
John E. Scates, P.E.
3121 Fairgate Drive
Carrollton, Texas 75007
TXPE 56308, F-2203

Supporting structural elements to be designed by registered professional engineer for specified wind loads. If door is not electrically operated, a lock must be installed.
Door height: 24'-0" max
Section height: 24" max

This door has been evaluated per ASCE 7-02 & 7-05 as referenced by 2006 IBC 1609 & 2006 IRC 301, in accordance with ANSI/DASMA 108-02, 108-05, & ASTM E330-02.
Design Pressures (DP) typically meet requirements for the following exposure B wind speeds. These wind speeds are for 8' high doors on buildings with a flat roof height less than 30 feet.

Door Width	With windows		No windows		Center Stiles
	Design Pressure	Exp B	Design Pressure	Exp B	
13'-08"	29.1 / - 35.7 (psf)	144 (mph)	29.1 / - 35.7 (psf)	144 (mph)	3
13'-02"	31.3 / - 38.5 (psf)	149 (mph)	31.3 / - 38.5 (psf)	149 (mph)	3
12'-02"	36.7 / - 45.1 (psf)	161 (mph)	36.7 / - 45.1 (psf)	161 (mph)	2
11'-00"	36.7 / - 45.1 (psf)	161 (mph)	40.6 / - 49.9 (psf)	169 (mph)	2

Center stile quantity is minimum per section.



Strut (if applicable) not shown for clarity.

(.059) galvanized steel top fixture. Each fixture attached with four 1/4" x 3/4" screws.

push nut
(.045) end stile manufactured by C.H.I.

(.109) galvanized steel top fixture. Each fixture attached with two 1/4" x 3/4" screws.

push nut
Optional low head room top bracket

nominal \varnothing 2" (min.)
10 (min.) ball roller with nylon or steel tread.

3-1/2" (min) stem
2" (max. for .069 thick)
4" (max. for .109 thick)

The vertical wood jamb fasteners may be counter sunk to provide a flat mounding surface. See jamb attachment details for more information about attaching jambs to structure.

1-3/4" polystyrene insulation.
nominal (.018) galvanized steel minimum
1" overlap
2" (min) x .054 (min) galvanized steel track
(.045) center stile manufactured by C.H.I.

End Hinge galvanized steel fastened to section with six 1/4" x 3/4" screws each.

push nut
2-3/4"

Intermediate Hinge (.058) galvanized steel fastened to section with four 1/4" x 3/4" screws.

2-3/4"

(.102) galvanized steel bottom bracket manufactured by C.H.I. Each bracket attached with four red 1/4" x 3/4" screws.

push nut
Aluminum extrusion
Vinyl weatherstrip

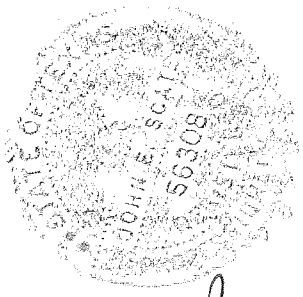
(.109) galvanized steel bottom bracket manufactured by C.H.I. Each bracket attached with four red 1/4" x 3/4" screws.

push nut
Aluminum extrusion
Vinyl weatherstrip

(.051) 50 ksi galvanized steel
3" strut attached with two 1/4" x 3/4" screws per end stile and four at each intermediate stile.

John E. Scates
2/15/13

John E. Scates, P.E.
3121 Fairgate Drive
Carrollton, Texas 75007
TXPE 56308, F-2203



(.086) galvanized steel flag bracket fastened to wood jamb with three 5/16" x 1-5/8" wood lag screws.

Flag bracket attached to horizontal track with two 1/4" x 5/8" track bolts and nuts.

Flag bracket attached to vertical track with two 1/4" x 5/8" track bolts and nuts.
Or two 1/4" x 11/32" rivets.

(.102) galvanized steel track bracket fastened to wood jamb with one 5/16" x 1-5/8" wood lag screw per bracket.

Each track bracket attached with one 1/4" x 5/8" track bolt and nut
Or two 1/4" x 11/32" rivets.

	SCALE	NIS
	DATE	2-12-2013
Models:	3220, 3221, 3222, 3240,	
	3241, 3242, 3250, 3251, 3252	
	40.6 (psf) / - 49.9 (psf) at 11'-00" through	
	29.1 (psf) / - 35.7 (psf) at 13'-08"	
C.H.I. Drawing:		TZ8-12-61313
		page 2 of 2

Professional Engineer's seal provided only for verification of windload construction details