

Window options (max 28.1 / - 34.0 psf)
 1/8" DSB
 1/4" Tempered Glass
 7/16" Insulated Glass
 7/16" Tempered Insulated Glass

Door Height	Section Quantity	Strut Quantity	Trk Brkt Per Side
6'-0" to 8'-0"	4	4	3
8'-3" to 10'-0"	5	5	4
10'-3" to 12'-0"	6	6	5
12'-3" to 14'-0"	7	7	6
14'-3" to 16'-0"	8	8	8
16'-3" to 18'-0"	9	9	9
18'-3" to 20'-0"	10	10	10
20'-3" to 22'-0"	11	11	12
22'-3" to 24'-0"	12	12	13

Track bracket quantities shown are for use with grade 2 or better southern pine jumbo. When using softer wood species like spruce-pine-fir (SPF) use the quantity of track brackets specified in the chart plus two track brackets per side.

This door has been evaluated per ASCE 7-02, & 7-05 as referenced by 2006 IBC 1609 & 2006 IRC 301, in accordance with ANSI/DASMA 108-02, 108-05, & ASTM E330-02. Design Pressures (DP) typically meet requirements for the following exposure B wind speeds. These wind speeds are for 8' high doors on buildings with a flat roof height less than 30 feet.

Door Width	With windows		No windows		Center Sills
	Design Pressure	Exp B	Design Pressure	Exp B	
15'-08"	16.9 / - 20.5 (psf)	110 (mph)	16.9 / - 20.5 (psf)	110 (mph)	3
15'-02"	18.1 / - 21.9 (psf)	114 (mph)	18.1 / - 21.9 (psf)	114 (mph)	3
14'-02"	20.7 / - 25.1 (psf)	122 (mph)	20.7 / - 25.1 (psf)	122 (mph)	3
13'-02"	24.0 / - 29.0 (psf)	131 (mph)	24.0 / - 29.0 (psf)	131 (mph)	3
12'-02"	28.1 / - 34.0 (psf)	141 (mph)	28.1 / - 34.0 (psf)	141 (mph)	2
11'-02"	28.1 / - 34.0 (psf)	141 (mph)	30.6 / - 37.0 (psf)	147 (mph)	2
10'-04"	28.1 / - 34.0 (psf)	140 (mph)	33.1 / - 40.0 (psf)	152 (mph)	2

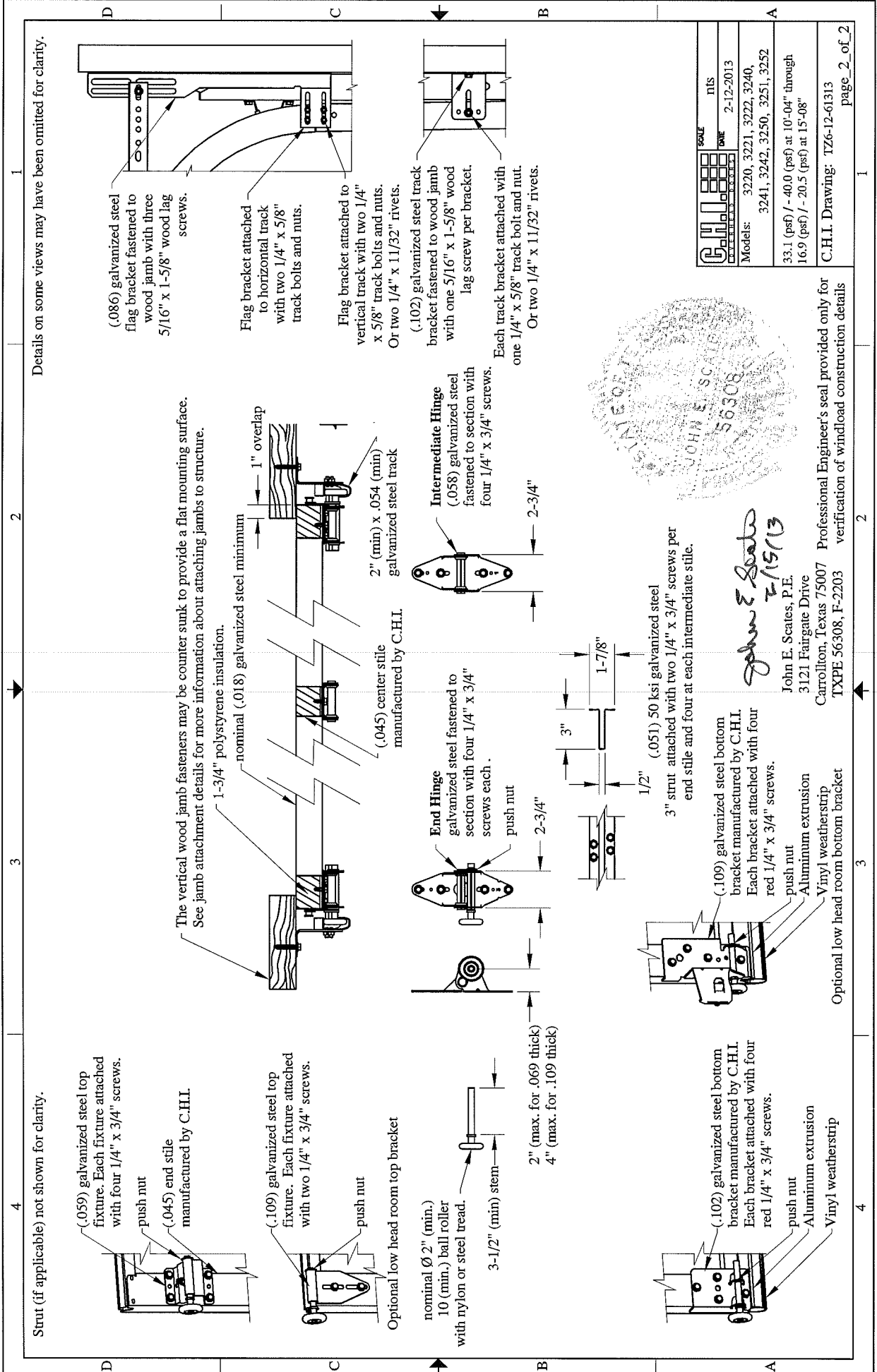
Supporting structural elements to be designed by registered professional engineer for specified wind loads. If door is not electrically operated, a lock must be installed.
 Door height: 24'-0" max
 Section height: 24" max



John E. Scates
 2/15/13
 John E. Scates, P.E.
 3121 Fairgate Drive
 Carrollton, Texas 75007
 TXPE 56308, F-2203

Professional Engineer's seal provided only for verification of windload construction details

SCALE NIS
DATE 2-12-2013
Models: 3220, 3221, 3222, 3240, 3241, 3242, 3250, 3251, 3252
 33.1 (psf) / - 40.0 (psf) at 10'-04" through
 16.9 (psf) / - 20.5 (psf) at 15'-08"
C.H.I. Drawing: TZ6-12-61313
 page 1 of 2



Details on some views may have been omitted for clarity.

The vertical wood jamb fasteners may be counter sunk to provide a flat mounting surface. See jamb attachment details for more information about attaching jambs to structure.

Strut (if applicable) not shown for clarity.

(.059) galvanized steel top fixture. Each fixture attached with four 1/4" x 3/4" screws.

(.045) end stile manufactured by C.H.I.

(.109) galvanized steel top fixture. Each fixture attached with two 1/4" x 3/4" screws.

Optional low head room top bracket

nominal Ø 2" (min.) 10 (min.) ball roller with nylon or steel tread.

3-1/2" (min) stem

2" (max. for .069 thick)
4" (max. for .109 thick)

End Hinge galvanized steel fastened to section with four 1/4" x 3/4" screws each.

push nut

2-3/4"

Intermediate Hinge (.058) galvanized steel fastened to section with four 1/4" x 3/4" screws.

2-3/4"

(.045) center stile manufactured by C.H.I.

2" (min) x .054 (min) galvanized steel track

nominal (.018) galvanized steel minimum

1-3/4" polystyrene insulation.

1" overlap

(.102) galvanized steel bottom bracket manufactured by C.H.I. Each bracket attached with four red 1/4" x 3/4" screws.

push nut
Aluminum extrusion
Vinyl weatherstrip

(.109) galvanized steel bottom bracket manufactured by C.H.I. Each bracket attached with four red 1/4" x 3/4" screws.

push nut
Aluminum extrusion
Vinyl weatherstrip

1/2" (.051) 50 ksi galvanized steel 3" strut attached with two 1/4" x 3/4" screws per end stile and four at each intermediate stile.

John E. Scates
2-15-13

John E. Scates, P.E.
3121 Fairgate Drive
Carrollton, Texas 75007
TXPE 56308, F-2203

Optional low head room bottom bracket
Professional Engineer's seal provided only for verification of windload construction details



	DATE	2-12-2013
	MODELS	3220, 3221, 3222, 3240, 3241, 3242, 3250, 3251, 3252
33.1 (psf) / - 40.0 (psf) at 10'-04" through 16.9 (psf) / - 20.5 (psf) at 15'-08"		ITIS Models: 3220, 3221, 3222, 3240, 3241, 3242, 3250, 3251, 3252
C.H.I. Drawing: TZ6-12-61313		page_2_of_2