

Window options:  
 1/8" DSB  
 1/4" Tempered Glass  
 7/16" Insulated Glass  
 7/16" Tempered Insulated Glass

Door Height	Section	Quantity	Trk Brkt Per Side
6'-0" to 8'-0"	4	6	5
8'-3" to 10'-0"	5	8	7
10'-3" to 12'-0"	6	10	9
12'-3" to 14'-0"	7	12	11
14'-3" to 16'-0"	8	14	13
16'-3" to 18'-0"	9	16	15
18'-3" to 20'-0"	10	18	17
20'-3" to 22'-0"	11	20	19
22'-3" to 24'-0"	12	22	21

Track bracket quantities shown are for use with grade 2 or better southern pine jambs. When using softer wood species like spruce-pine-fir (SPF) use the quantity of track brackets specified in the chart plus two track brackets per side.

Supplemental Instructions contain details for doors up to 24'-0" high. These are required in addition to this drawing for installation. Always use supplemental instructions in addition to this drawing during door installation.

Model:	3241, 3242, 3250, 3251, 3252
Models:	3241, 3242, 3250, 3251, 3252
57.5 (psf) / - 68.9 (psf) at 06'-00" through	
27.9 (psf) / - 33.4 (psf) at 13'-02"	
C.H.I. Drawing:	TZ12-09-66313
	page 1 of 2



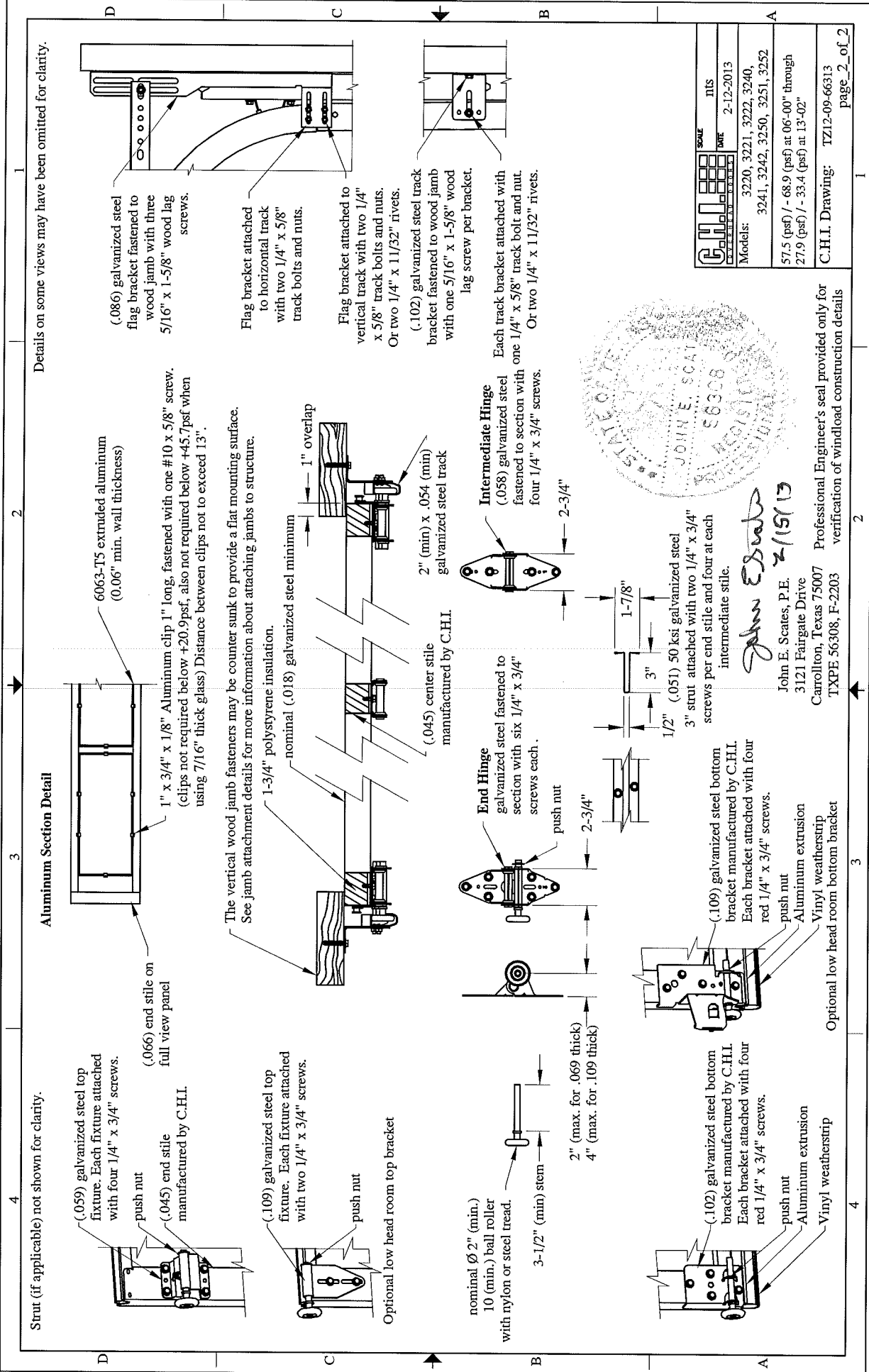
John E. Scates  
 2/15/13  
 John E. Scates, P.E.  
 3121 Fairgate Drive  
 Carrollton, Texas 75007  
 TXPE 56308, F-2203

This door has been evaluated per ASCE 7-02 & 7-05 as referenced by 2006 IBC 1609 & 2006 IRC 301, in accordance with ANS/DASMA 108-02, 108-05, & ASTM E330-02. Design Pressures (DP) typically meet requirements for the following exposure B wind speeds. These wind speeds are for 8' high doors on buildings with a flat roof height less than 30 feet.

Door Width	With and Without Windows	Design Pressure	Exp B	center stiles
13'-02"	27.9 / - 33.4 (psf)	141 (mph)	3	
12'-02"	32.6 / - 39.1 (psf)	152 (mph)	2	
11'-02"	38.7 / - 46.4 (psf)	165 (mph)	2	
10'-02"	46.7 / - 56.0 (psf)	181 (mph)	2	
09'-02"	57.5 / - 68.9 (psf)	200 (mph)	1	
08'-02"	57.5 / - 68.9 (psf)	200 (mph)	1	
07'-02"	57.5 / - 68.9 (psf)	200 (mph)	1	
06'-00"	57.5 / - 68.9 (psf)	200 (mph)	1	

Supporting structural elements to be designed by registered professional engineer for specified wind loads. If door is not electrically operated, a lock must be installed.  
 Door height: 24'-0" max  
 Section height: 24" max  
 Center stile quantity is minimum per section.

Professional Engineer's seal provided only for verification of windload construction details



Strut (if applicable) not shown for clarity.

Aluminum Section Detail

Details on some views may have been omitted for clarity.

(.059) galvanized steel top fixture. Each fixture attached with four 1/4" x 3/4" screws.

(.066) end stile on full view panel

(.045) end stile manufactured by C.H.I.

6063-T5 extruded aluminum (0.06" min. wall thickness)

1" x 3/4" x 1/8" Aluminum clip 1" long, fastened with one #10 x 5/8" screw. (clips not required below +20.9psf, also not required below +45.7psf when using 7/16" thick glass) Distance between clips not to exceed 13".

(.109) galvanized steel top fixture. Each fixture attached with two 1/4" x 3/4" screws.

Optional low head room top bracket

The vertical wood jamb fasteners may be counter sunk to provide a flat mounting surface. See jamb attachment details for more information about attaching jambs to structure.

1-3/4" polystyrene insulation.

nominal (.018) galvanized steel minimum

2" (min) x .054 (min) galvanized steel track

(.045) center stile manufactured by C.H.I.

nominal Ø 2" (min.) 10 (min.) ball roller with nylon or steel tread.

3-1/2" (min) stem  
2" (max. for .069 thick)  
4" (max. for .109 thick)

End Hinge galvanized steel fastened to section with six 1/4" x 3/4" screws each.

Intermediate Hinge (.058) galvanized steel fastened to section with four 1/4" x 3/4" screws.

push nut

2-3/4"

2-3/4"

(.102) galvanized steel bottom bracket manufactured by C.H.I. Each bracket attached with four red 1/4" x 3/4" screws.

(.109) galvanized steel bottom bracket manufactured by C.H.I. Each bracket attached with four red 1/4" x 3/4" screws.

3" strut attached with two 1/4" x 3/4" screws per end stile and four at each intermediate stile.

Each track bracket attached with one 1/4" x 5/8" track bolt and nut. Or two 1/4" x 11/32" rivets.

push nut  
Aluminum extrusion  
Vinyl weatherstrip

push nut  
Aluminum extrusion  
Vinyl weatherstrip

John E. Scates, P.E.  
3121 Fairgate Drive  
Carrollton, Texas 75007  
TXPE 56308, F-2203

Professional Engineer's seal provided only for verification of windload construction details

	SCALE	INS
	DATE	2-12-2013
Models:	3220, 3221, 3222, 3240, 3241, 3242, 3250, 3251, 3252	
	57.5 (psf) / - 68.9 (psf) at 06'-00" through 27.9 (psf) / - 33.4 (psf) at 13'-02"	
C.H.I. Drawing:		TZ12-09-66313
		page 2 of 2