

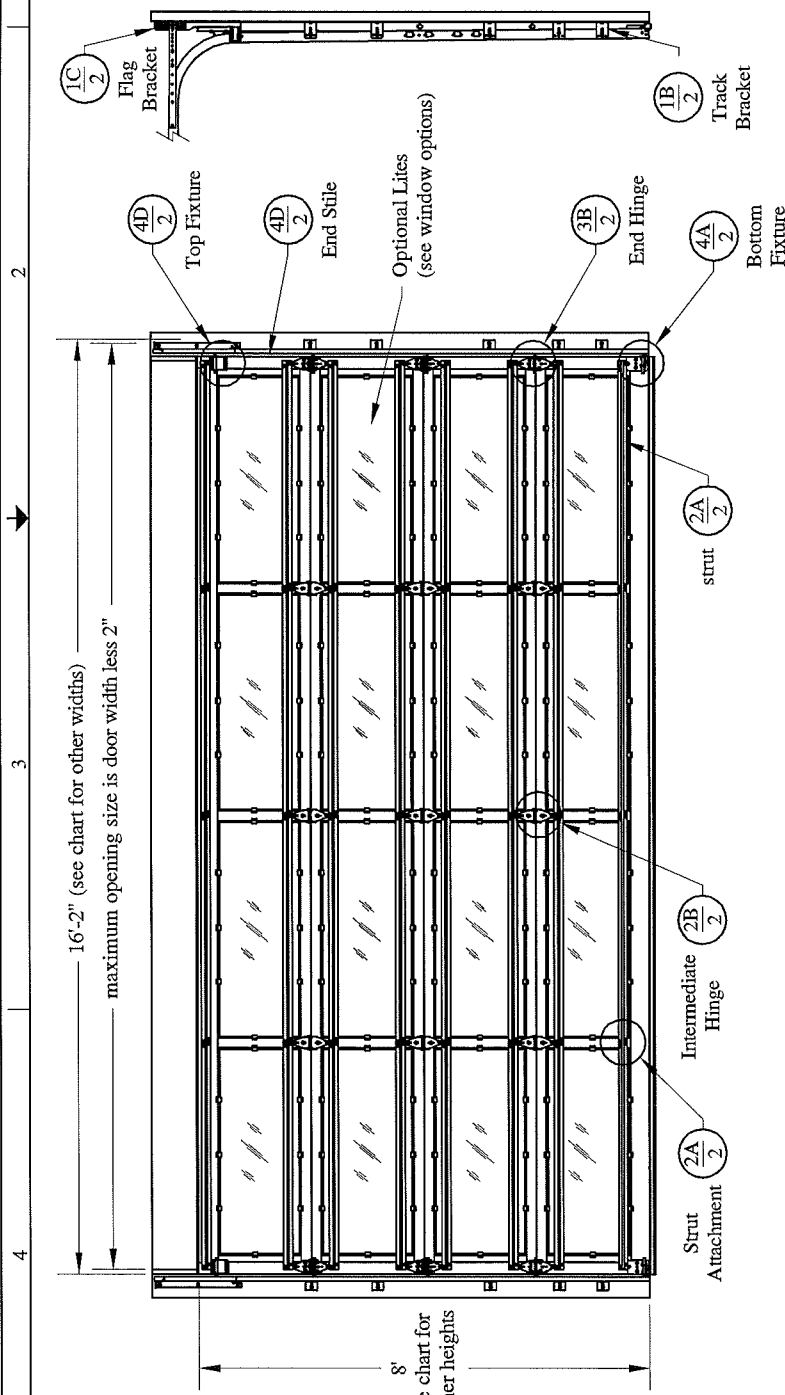
Window Options:
 max daylight opening 45-1/4" x 19"
 1/8" DSB
 1/4" Tempered Glass
 7/16" Insulated Glass
 7/16" Tempered Insulated Glass
 049" Aluminum Panel
 7/16" Insulated Aluminum Panel

Door Height	section quantity	strut quantity	per side
6'-0" to 8'-0"	4	8	5
8'-3" to 10'-0"	5	10	7
10'-3" to 12'-0"	6	12	9
12'-3" to 14'-0"	7	14	11
14'-3" to 16'-0"	8	16	13
16'-3" to 18'-0"	9	18	15
18'-3" to 20'-0"	10	20	17
20'-3" to 22'-0"	11	22	19
22'-3" to 24'-0"	12	24	21

Track bracket quantities shown are for use with grade 2 or better southern pine jambs. When using softer wood species like spruce-pine-fir (SPF) use the quantity of track brackets specified in the chart plus three track brackets per side.

Supplemental Instructions contain details for doors up to 24'-0" high. These are required in addition to this drawing for installation. Always use supplemental instructions in addition to this drawing during door installation.

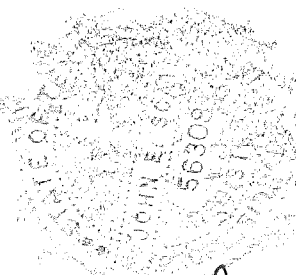
	DATE	3-1-2013
Model	3290, 3295, 329X	
38.2 (psf) / -42.8 (psf) at 14'-04" through		
24.5 (psf) / -27.5 (psf) at 20'-02"		
C.H.I. Drawing: TZ9-16-64313		
page 1 of 2		



This door has been evaluated per ASCE 7-02 & 7-05 as referenced by 2006 IBC 1609 & 2006 IRC 301, in accordance with ANSI/DASMA 108-02, 108-05, & ASTM E330-02. Design Pressures (DP) typically meet requirements for the following exposure B wind speeds. These wind speeds are for 8' high doors on buildings with a flat roof height less than 30 feet.

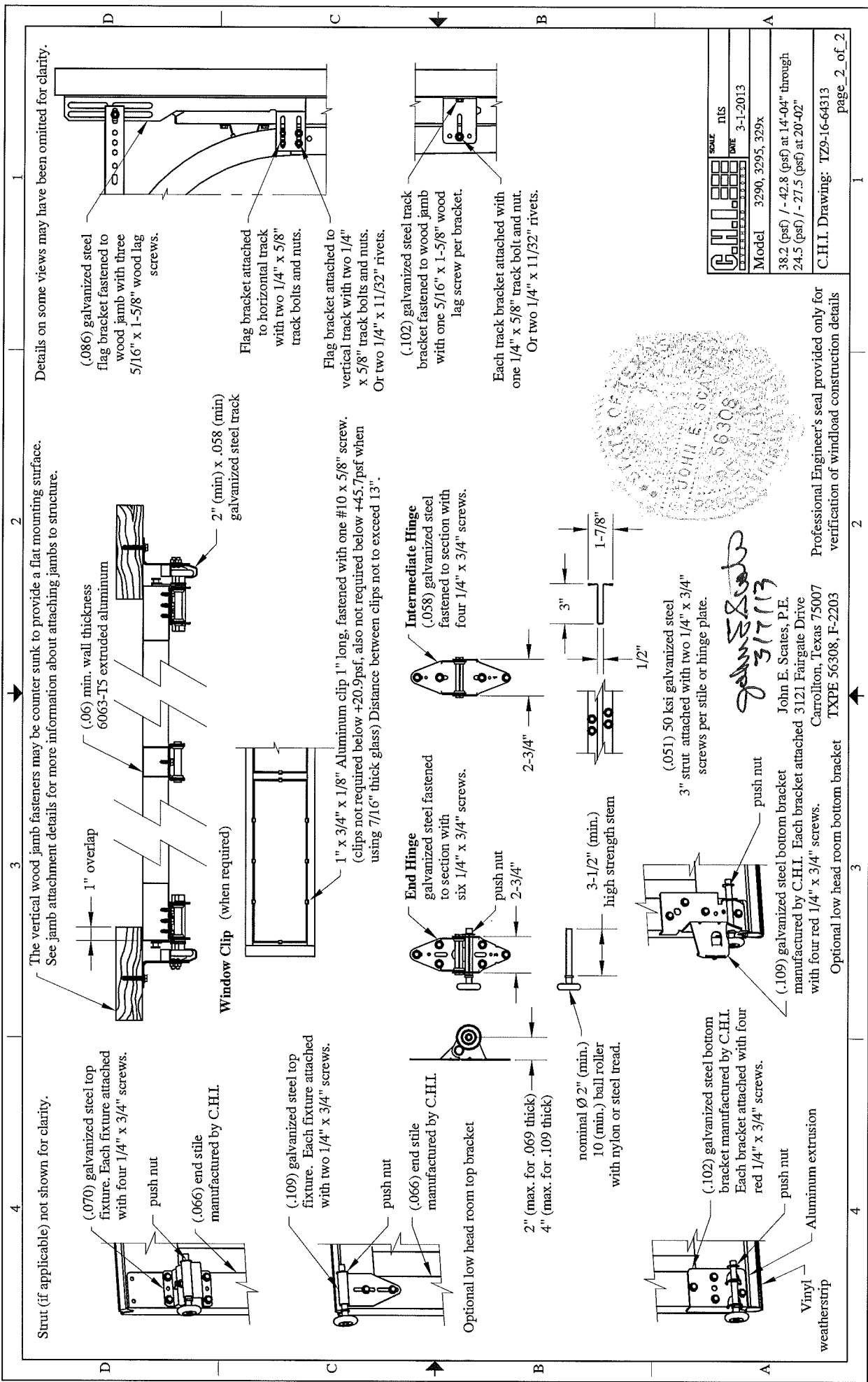
Door Width	Design Pressure	Exp B	Stiles
20'-02"	24.5 / -27.5 (psf)	134 (mph)	4
19'-02"	27.2 / -30.5 (psf)	141 (mph)	4
18'-02"	30.3 / -33.9 (psf)	149 (mph)	4
17'-02"	33.9 / -38.0 (psf)	157 (mph)	4
16'-06"	36.7 / -41.1 (psf)	163 (mph)	3
16'-02"	38.2 / -42.8 (psf)	166 (mph)	3
15'-02"	38.2 / -42.8 (psf)	165 (mph)	3
14'-04"	38.2 / -42.8 (psf)	165 (mph)	3

Supporting structural elements to be designed by registered professional engineer for specified wind loads. If door is not electrically operated, a lock must be installed.
 Door height: 24'-0" max
 Section height: 24" max
 Center stile quantity is minimum per section.



John E. Scates
 5/7/13
 John E. Scates, P.E.
 3121 Fairgate Drive
 Carrollton, Texas 75007
 TXPE 56308, F-2203

Professional Engineer's seal provided only for verification of windload construction details

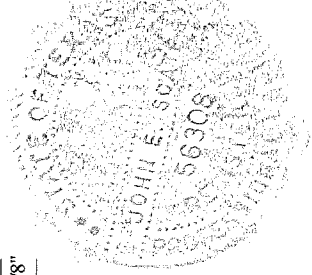


Strut (if applicable) not shown for clarity.

The vertical wood jamb fasteners may be counter sunk to provide a flat mounting surface. See jamb attachment details for more information about attaching jambs to structure.

Details on some views may have been omitted for clarity.

		SCALE NIS DATE 3-1-2013
Model 3290, 3295, 329x		38.2 (psf) / - 42.8 (psf) at 14'-04" through 24.5 (psf) / - 27.5 (psf) at 20'-02"
C.H.I. Drawing: T79-16-64313 page 2 of 2		



John E. Scates
 3/17/13
 John E. Scates, P.E.
 3121 Fairgate Drive
 Carrollton, Texas 75007
 TXPE 56308, F-2203

Professional Engineer's seal provided only for verification of windload construction details

Optional low head room bottom bracket manufactured by C.H.I. Each bracket attached with four red 1/4" x 3/4" screws.

Optional low head room top bracket manufactured by C.H.I. Each fixture attached with four 1/4" x 3/4" screws.