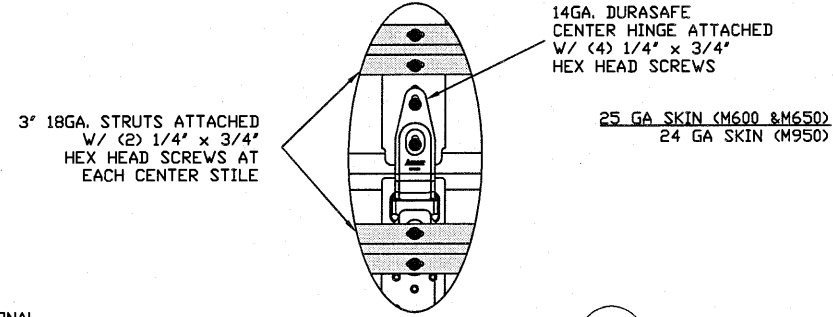
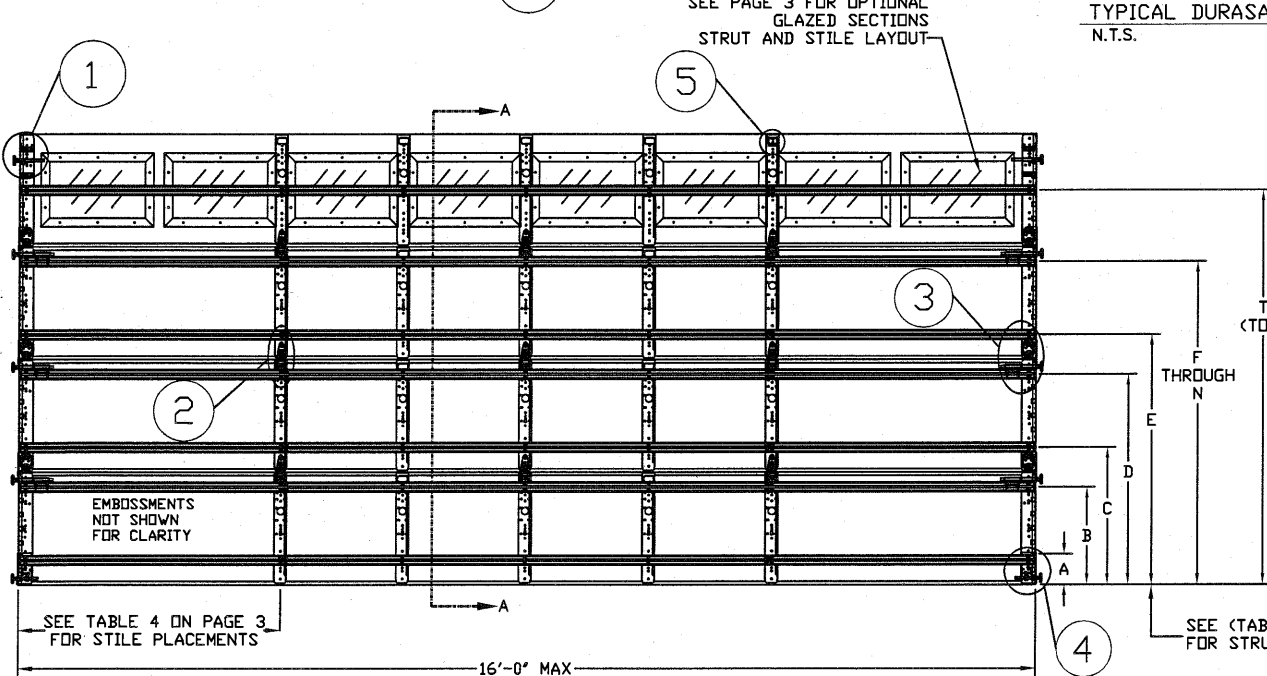


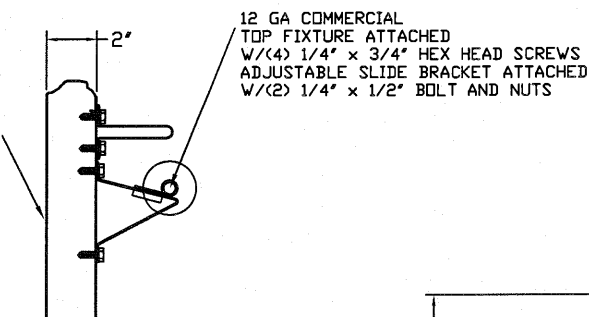
TYPICAL TOP FIXTURES  
N.T.S.



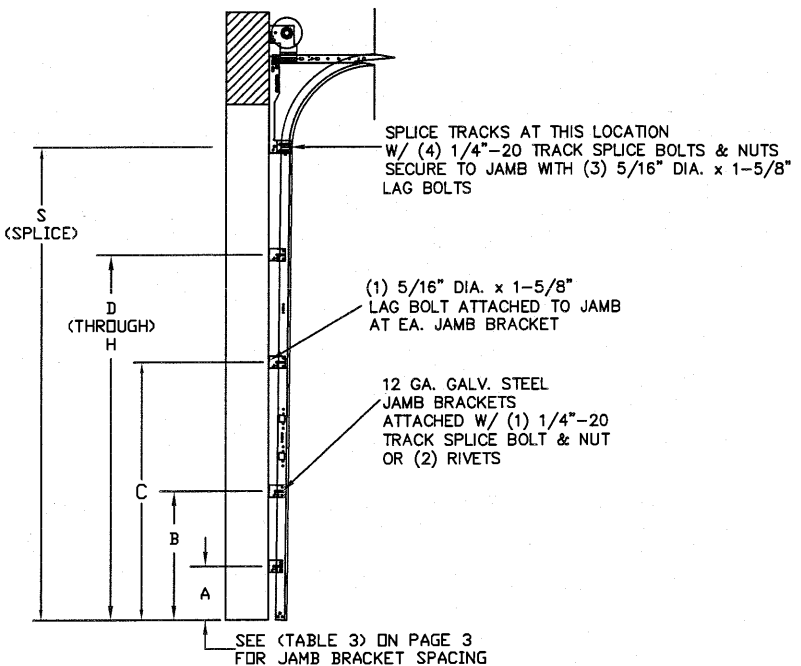
TYPICAL DURASAFE CENTER HINGE  
N.T.S.



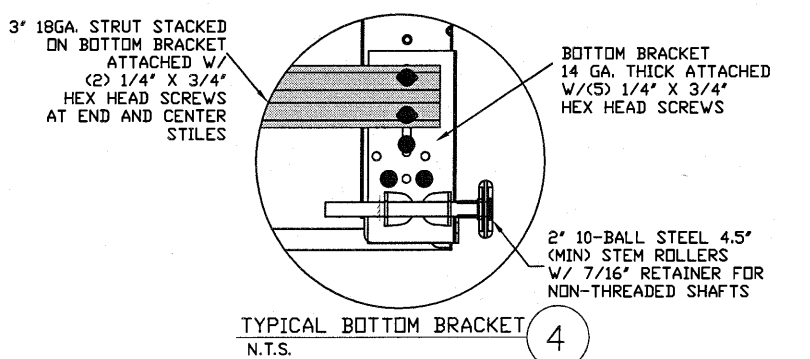
INSIDE ELEVATION  
N.T.S.



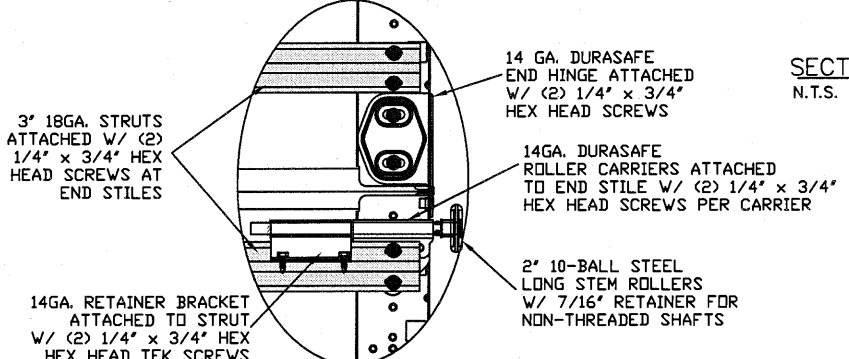
SECTION A-A (SIDE VIEW)  
N.T.S.



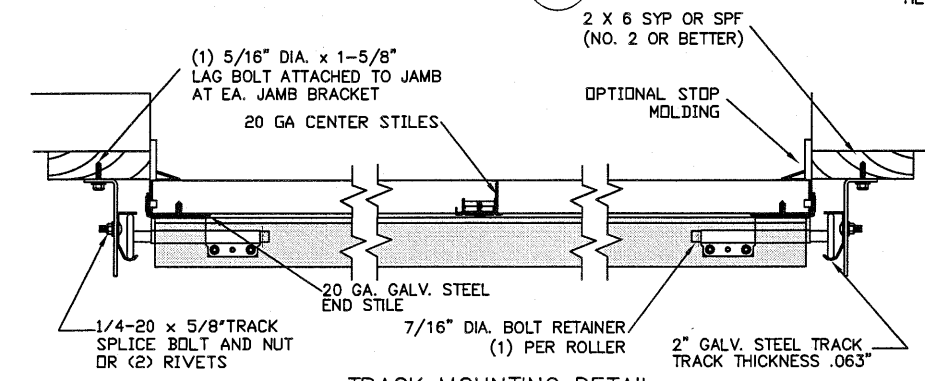
TRACK CONFIGURATION FOR 6'6" UP TO 14' TALL DOORS  
N.T.S.



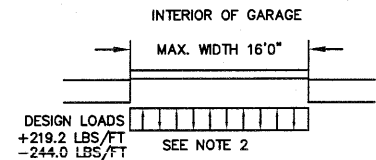
TYPICAL BOTTOM BRACKET  
N.T.S.



TYPICAL DURASAFE END HINGE  
N.T.S.



TRACK MOUNTING DETAIL  
N.T.S.



DESIGN LOADS  
+219.2 LBS/FT  
-244.0 LBS/FT  
SEE NOTE 2

THE METHOD OF TESTING WAS IN SUBSTANTIAL CONFORMANCE WITH THE PROCEDURE DESCRIBED IN ASTM E330 AND DASMA 108. THE PRESSURES SHOWN ON THE DRAWINGS WERE CALCULATED USING ASCE 7-98/02/05 WITH THE FOLLOWING PARAMETERS (5 FEET OF DOOR WIDTH IN THE END ZONE, ROOF AT ANY SLOPE, AND I=1.0):

WIND SPEED (MPH)	133	121	115	110	105
EXPOSURE LEVEL	B	C	C	D	D
MEAN ROOF HEIGHT	30'	15'	25'	15'	25'

- SPECIFICATIONS AND NOTES
- ALL THE LOAD FROM THE DOOR IS TRANSFERRED TO THE VERTICAL TRACK. FROM THE TRACK THE LOAD IS TRANSFERRED TO THE VERTICAL JAMBS. THE HORIZONTAL JAMB OR HEADER RECEIVES NO PORTION OF THE LOAD TRANSFERRED FROM THE DOOR.
  - EACH VERTICAL JAMB RECEIVES MAXIMUM DESIGN LOADS OF: +219.2 LBS/FT & -244.0 LBS/FT
  - DOORS AND HARDWARE WILL BE DESIGNED, MANUFACTURED AND INSTALLED WITH STANDARDS AS SET FORTH BY DASMA.
  - DOOR SECTIONS SHALL BE 25 GA. MIN. (.019") ROLLED FORMED LIGHT COMMERCIAL QUALITY
  - SUPPORTING STRUCTURAL ELEMENTS SHALL BE DESIGNED BY A REGISTERED PROFESSIONAL ENGINEER FOR WIND LOADS INDICATED ON THIS DRAWING IN ADDITION TO OTHER LOADINGS.
  - REFER TO TABLES ON THE PAGE 3 FOR ADDITIONAL DOOR WIDTHS AND THEIR DESIGN PRESSURES

REV	DESCRIPTION OF REVISIONS	DATE	BY

MAX SIZE  
16' WIDTH  
14' HEIGHT  
(DOOR HEIGHT SUBJECT TO WEIGHT LIMITATIONS)

DESIGN LOADS  
+27.4 PSF  
-30.5 PSF

TEST LOADS  
+41.1 PSF  
-45.8 PSF

STATE OF TEXAS  
THOMAS L. SHELMERDINE  
85829  
LICENSED PROFESSIONAL ENGINEER  
TX

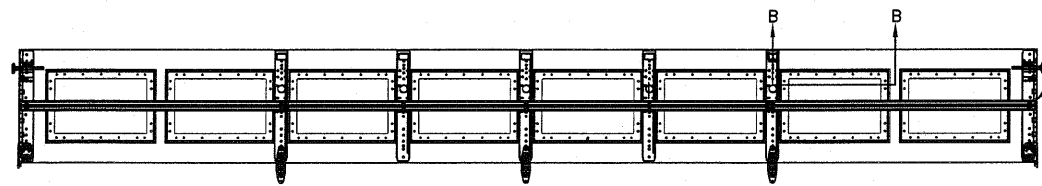
Amarr  
ENTRE/MATIC  
165 CARRIAGE COURT WINSTON-SALEM, N.C. 27105

MODEL #650 OAK SUMMIT w/DuraSafe  
MODEL #600 STRATFORD w/DuraSafe  
MODEL #950 HERITAGE w/DuraSafe  
Short, Long, Flush & Oak Summit Panel's

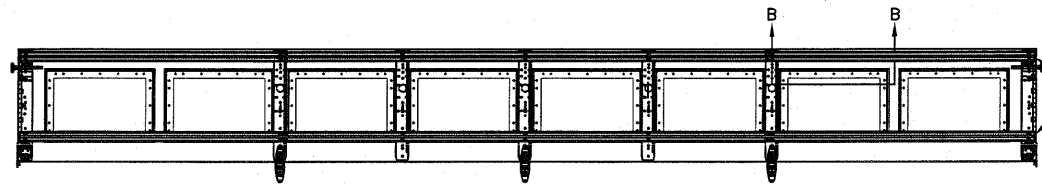
SIZE	DRAWN BY	RLR	DATE	03/3/14	DRAWING NUMBER
B	CHECKED BY		DATE		IRC-6016-133-17-1

SHEET 1 OF 3

5921-G W. Friendly Ave., Greensboro, NC 27410



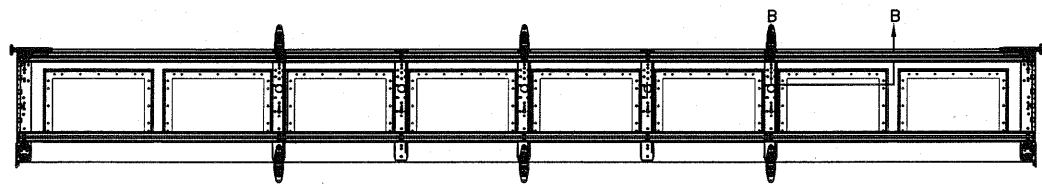
3" 18GA. STRUT LOCATED IN THE MIDDLE OF GLAZED SECTION ATTACHED W/ (2) 1/4" X 3/4" HEX HEAD SCREWS AT END AND CENTER STILES



3" 18GA. STRUT LOCATED ON THE TOP AND BOTTOM OF GLAZED SECTION ATTACHED W/ (2) 1/4" X 3/4" HEX HEAD SCREWS AT END AND CENTER STILES

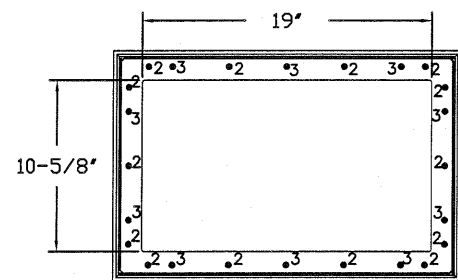
OPTIONAL SHORT PANEL TOP GLAZED SECTION (STRUT AND STILE LAYOUTS)

\* ADDITIONAL STRUTS MAY BE ADDED TO DOOR WHEN GLAZED FOR COUNTERBALANCE PURPOSES

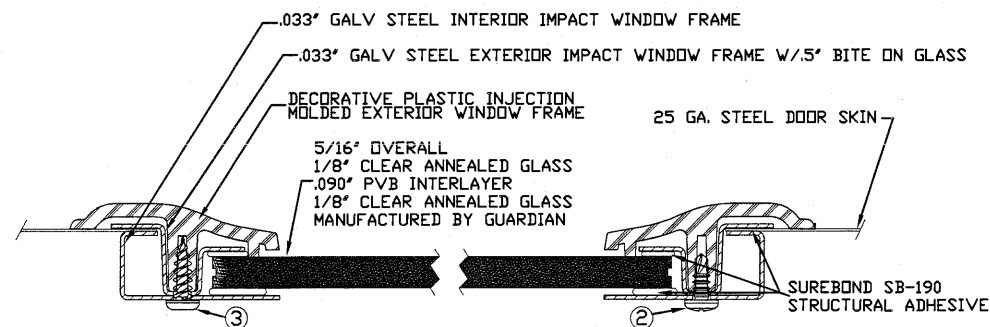


OPTIONAL SHORT PANEL INTERMEDIATE GLAZED SECTION (STRUT AND STILE LAYOUT)

\* ADDITIONAL STRUTS MAY BE ADDED TO DOOR WHEN GLAZED FOR COUNTERBALANCE PURPOSES



IMPACT GLAZING FASTENER DETAIL  
N.T.S.



- 3/16" X 1/2" SCREW - USED TO FASTEN THE STEEL EXTERIOR IMPACT WINDOW FRAME TO THE STEEL INTERIOR IMPACT WINDOW FRAME.
- 11/64" X 1/2" SCREW - USED TO FASTEN DECORATIVE PLASTIC MOLDED WINDOW FRAME TO THE ASSEMBLY

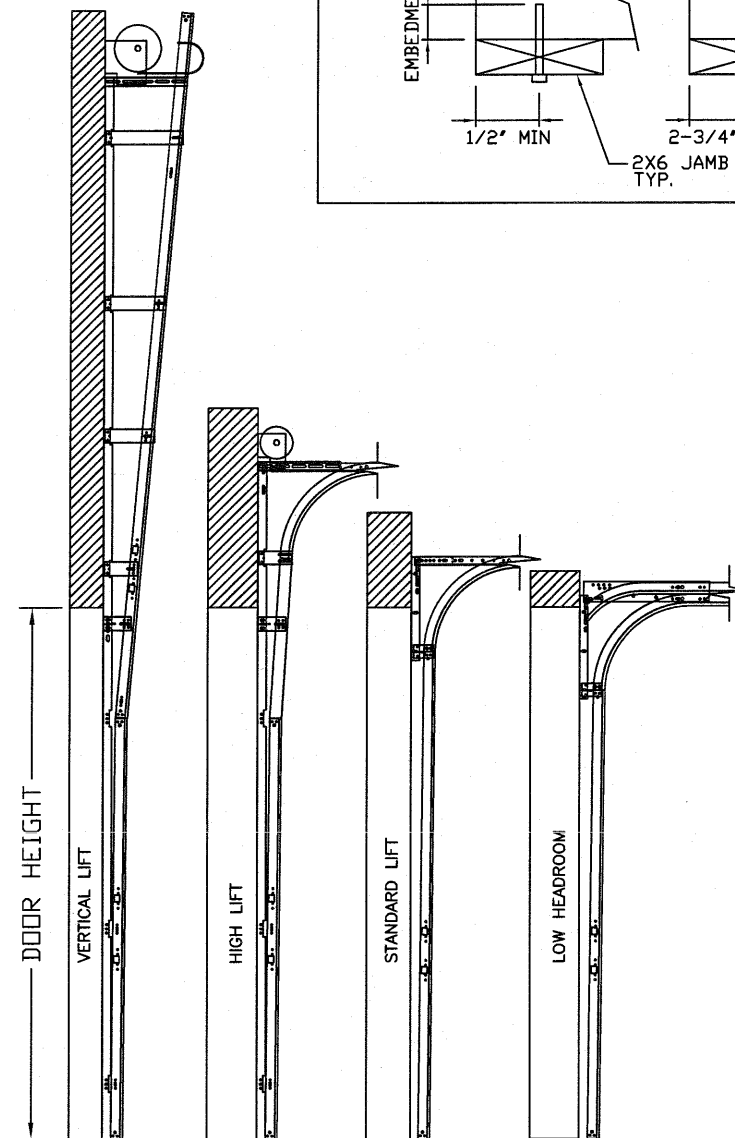
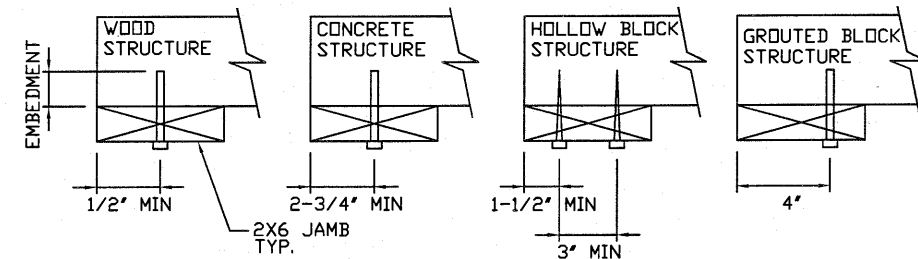
SECTION B-B IMPACT WINDOW DETAIL  
N.T.S.

## WOOD JAMB ATTACHMENT TO STRUCTURE

**2 X 6 VERTICAL JAMB ATTACHMENT TO WOOD FRAME STRUCTURE**  
 5/16" X 3" LAG SCREWS STARTING 6" FROM ENDS THEN 22" O.C. (1 1/2" EMBEDMENT)  
**2 X 6 VERTICAL JAMB ATTACHMENT TO 2,000 PSI CONCRETE**  
 HILTI KWIK BOLT 3/8" X 4" STARTING 6" FROM ENDS THEN 24" O.C. (2 1/2" EMBEDMENT)  
 HILTI SLEEVE ANCHOR 3/8" X 2-3/4" STARTING 6" FROM ENDS THEN 20" O.C. (1 1/4" EMBEDMENT)  
 ITW/RAMSET REDHEAD (TRU-BOLT) 3/8" X 4" STARTING 6" FROM ENDS THEN 24" O.C. (2 1/2" EMBEDMENT)  
**2 X 6 VERTICAL JAMB ATTACHMENT TO HOLLOW C-90 BLOCK**  
 SIMPSON 1/4" X 3" TITEN SCREWS STARTING 6" FROM ENDS, USE PAIRS OF FASTENERS (3" APART) AT 16" O.C. (1 1/2" EMBEDMENT)  
 HILTI 1/4" X 2-3/4" KWIK-CON II+ SCREWS STARTING 6" FROM ENDS, USE PAIRS OF FASTENERS (3" APART) AT 16" O.C. (1 1/4" EMBEDMENT)

**2 X 6 VERTICAL JAMB ATTACHMENT TO GROUTED C-90 BLOCK (2000 PSI GROUT)**  
 HILTI SLEEVE ANCHOR 3/8" X 2-3/4" STARTING 6" FROM ENDS THEN 22" O.C. (1 1/4" EMBEDMENT) (OR, USE FASTENERS FOR HOLLOW C-90 BLOCK)

\*LAGS AND BOLTS CAN BE COUNTERSUNK TO PROVIDE A FLUSH MOUNTING SURFACE.  
 \*PREPARATION OF WOOD JAMBS BY OTHERS



AVAILABLE TRACK CONFIGURATIONS  
N.T.S.

REV	DESCRIPTION OF REVISIONS	DATE	BY
	MAX SIZE 16' WIDTH 14' HEIGHT (DOOR HEIGHT SUBJECT TO WEIGHT LIMITATIONS)		
	DESIGN LOADS +27.4 PSF -30.5 PSF		
	TEST LOADS +41.1 PSF -45.8 PSF		
	Thomas L. Shelmerdine, PE (TX PE #85829) Structural Solutions, PA (TX Firm #F-004063)		
	TX <b>Amarr</b> ENTRE/MATIC 165 CARRIAGE COURT WINSTON-SALEM, N.C. 27105		
	MODEL #650 OAK SUMMIT w/DuraSafe MODEL #600 STRATFORD w/DuraSafe MODEL #950 HERITAGE w/DuraSafe Short, Long, Flush & Oak Summit Panel's		
	SIZE B	DRAWN BY RLR	DATE 03/3/14
	CHECKED BY	DATE	DRAWING NUMBER IRC-6016-133-17-1
			SHEET 2 OF 3

5921-G.W. Friendly Ave., Greensboro, NC 27410

