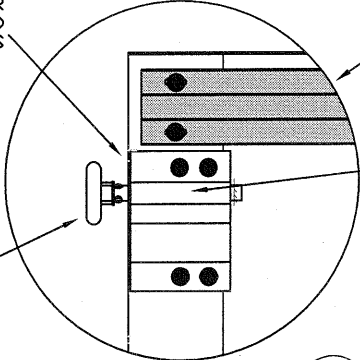


12 GA. COMMERCIAL TOP ROLLER BRACKET ATTACHED W/ (4) 1/2" X 3/4" HEX HEAD SCREWS

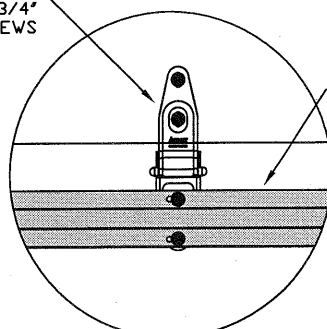


TYPICAL TOP FIXTURE
N.T.S. ①

3' 20 GA. STRUT ATTACHED W/ (2) 1/4" X 3/4" HEX HEAD SCREWS

ADJUSTABLE SLIDE BRACKET ATTACHED W/ (2) 1/4" X 1/2" CARRIAGE BOLTS AND NUTS

14GA. DURASAFE CENTER HINGE ATTACHED W/ (4) 1/4" X 3/4" HEX HEAD SCREWS



TYPICAL DURASAFE CENTER HINGE
N.T.S. ②

3' 20 GA. STRUT ATTACHED W/ (2) 1/4" X 3/4" HEX HEAD SCREWS

27 GA. EXTERIOR SKIN (1500 & 1550)
24 GA. EXTERIOR SKIN (1200)

1 3/8" (1500 & 1550)
2" (1200)

(1) 3' 20GA. STRUT PER TOP AND INTERMEDIATE SECTION ALL STRUTS ATTACHED W/ (2) 1/4" X 3/4" HEX HEAD SCREWS AT EACH STILE

12 GA. COMMERCIAL TOP FIXTURE ATTACHED W/ (4) 1/4" X 3/4" HEX HEAD SCREWS ADJUSTABLE SLIDE BRACKET ATTACHED W/ (2) 1/4" X 1/2" BOLT AND NUTS

27 GA. INTERIOR SKIN

POLYSTYRENE INSULATION
R=5.73, U=0.17
CFC-FREE EXPANDED

END HINGE
12 GA.

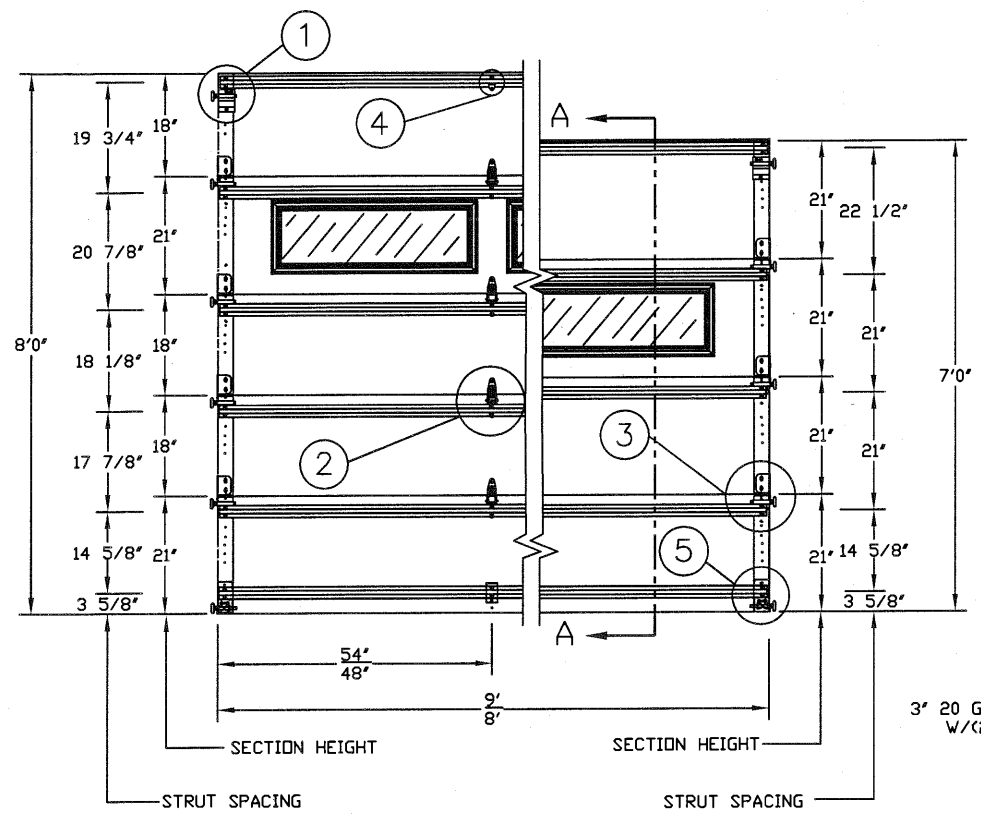
(2) 3' 20GA. STRUTS ON BOTTOM SECTION ATTACHED W/ (2) 1/4" X 3/4" HEX HEAD SCREWS AT EACH STILE

13 GA. BOTTOM BRACKET ATTACHED W/ (4) 1/4" X 3/4" HEX HEAD SCREWS.

CONT. ALUM. EXTRUSION
W/ CONT. VINYL ASTRAGAL

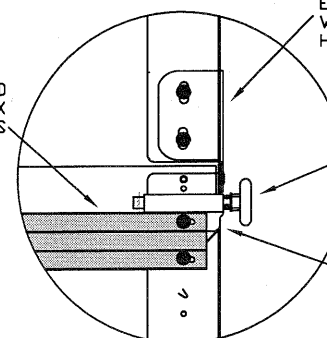
SECTION A-A (SIDE VIEW)
N.T.S.

LARGE MISSILE IMPACT
RESISTANT



INSIDE ELEVATION
N.T.S.

3' 20 GA. STRUT ATTACHED W/ (2) 1/4" X 3/4" HEX HEAD SCREWS

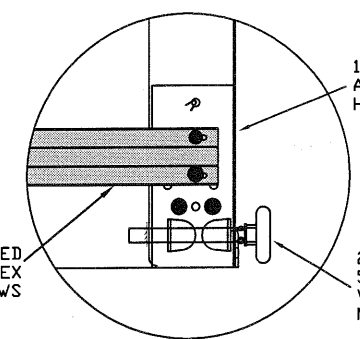


TYPICAL DURASAFE END HINGE
N.T.S. ③

12GA. DURASAFE END HINGE ATTACHED W/ (2) 1/4" X 3/4" HEX HEAD SCREWS

2" 10-BALL STEEL 5"(MIN) STEM ROLLER W/ 7/16" RETAINER FOR NON-THREADED SHAFTS

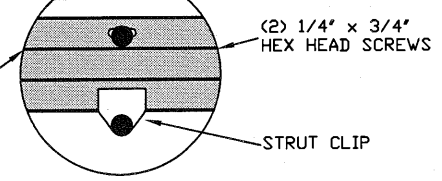
14GA. DURASAFE ROLLER CARRIER ATTACHED W/ (2) 1/4" X 3/4" HEX HEAD SCREWS



TYPICAL BOTTOM BRACKET
N.T.S. ⑤

2" 10-BALL STEEL 5"(MIN) STEM ROLLER W/ 7/16" RETAINER FOR NON-THREADED SHAFTS

3' 20GA. STRUT



TYPICAL TOP STRUT ATTACHMENT
N.T.S. ④

(1) 5/16" DIA. X 1-5/8" LAG BOLT ATTACHED TO JAMB AT EA. JAMB BRACKET

STOP MOULDING W/ FLEXIBLE SEAL (SUPPLIED BY INSTALLER)

20 GA. GALV. STEEL END STILE

2" GALV. STEEL TRACK TRACK THICKNESS .063"

7/16" DIA. BOLT RETAINER (1) PER ROLLER

2 X 6 SYP OR SPF (NO. 2 OR BETTER)

TRACK MOUNTING DETAIL
N.T.S.

REV	DESCRIPTIONS OF REVISIONS	DATE	BY

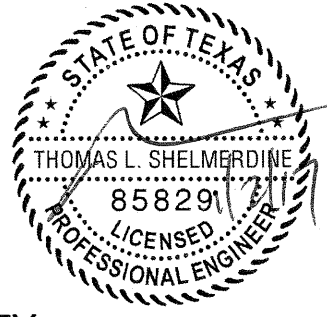
MAX SIZE
9' x 14'

DESIGN LOADS
+38.0 PSF
-45.0 PSF

TEST LOADS
+57.0 PSF
-67.5 PSF

LARGE MISSILE IMPACT
RESISTANCE

Thomas L. Shelmerdine, PE (TX PE #85829)
Structural Solutions, PA (TX Firm #004063)



Amarr
ENTRE/MATIC

MODEL #1500 AMARR STRATFORD 3000
MODEL #1200 AMARR HERITAGE 3000
MODEL #1550 AMARR OAK SUMMIT 3000
SHORT, LONG, FLUSH & OAK SUMMIT PANELS

THE METHOD OF TESTING WAS IN SUBSTANTIAL CONFORMANCE WITH THE PROCEDURE DESCRIBED IN DASMA 108-05 & 115-05, AND ASTM E330-02, E1886-05, E1996-09, & F588-07. THE PRESSURES SHOWN ON THE DRAWINGS WERE CALCULATED USING ASCE 7-05 WITH THE FOLLOWING PARAMETERS (5 FEET OF DOOR WIDTH IN THE END ZONE, ROOF AT ANY SLOPE I=1.0):

WIND SPEED (MPH)	155	141	134	128	123
EXPOSURE LEVEL	B	C	C	D	D
MEAN ROOF HEIGHT	30'	15'	25'	15'	25'

SIZE	DRAWN BY	RLR	DATE	10/10/16	DRAWING NUMBER
B	CHECKED BY	RLR	DATE	10/10/16	IRC-1509-155-15-1

ENTRE/MATIC
165 CARRIAGE COURT WINSTON-SALEM, NC. 27105

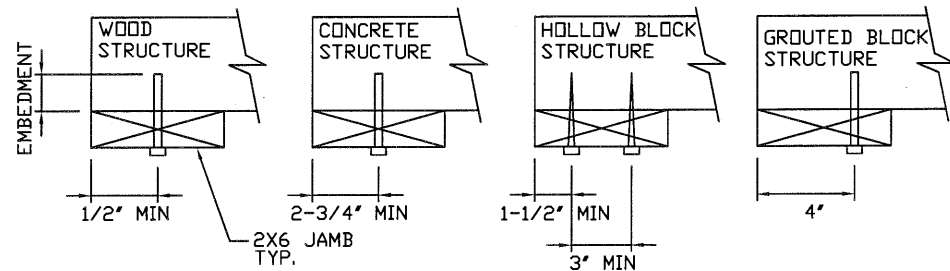
5921-G W. Friendly Ave., Greensboro, NC 27410

WOOD JAMB ATTACHMENT TO STRUCTURE

2 X 6 VERTICAL JAMB ATTACHMENT TO WOOD FRAME STRUCTURE
 5/16" X 3" LAG SCREWS STARTING 6" FROM ENDS THEN 24" O.C. (1 1/2" EMBEDMENT)
2 X 6 VERTICAL JAMB ATTACHMENT TO 2,000 PSI CONCRETE
 HILTI KWIK BOLT 3/8" X 4" STARTING 6" FROM ENDS THEN 24" O.C. (2 1/2" EMBEDMENT)
 HILTI SLEEVE ANCHOR 3/8" X 2-3/4" STARTING 6" FROM ENDS THEN 24" O.C. (1 1/4" EMBEDMENT)
 ITW/RAMSET REDHEAD (TRU-BOLT) 3/8" X 4" STARTING 6" FROM ENDS THEN 24" O.C. (2 1/2" EMBEDMENT)
2 X 6 VERTICAL JAMB ATTACHMENT TO HOLLOW C-90 BLOCK
 SIMPSON 1/4" X 3" TITEN SCREWS STARTING 6" FROM ENDS, USE PAIRS OF FASTENERS (3" APART) AT 16" O.C. (1 1/2" EMBEDMENT)
 HILTI 1/4" X 2-3/4" KWIK-CON II+ SCREWS STARTING 6" FROM ENDS, USE PAIRS OF FASTENERS (3" APART) AT 16" O.C. (1 1/4" EMBEDMENT)

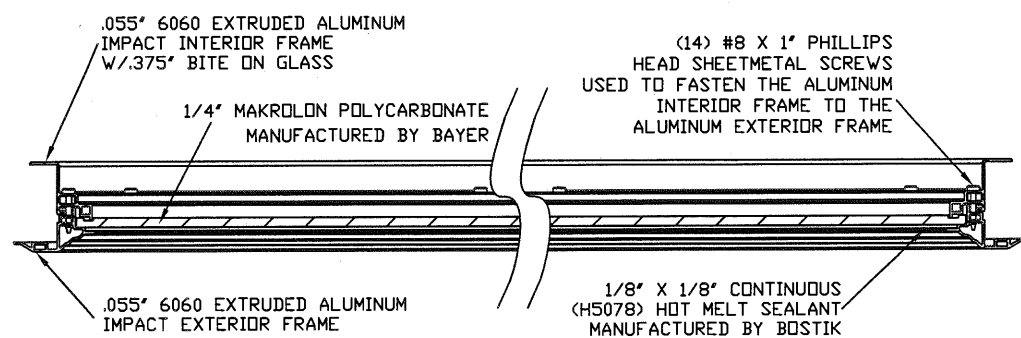
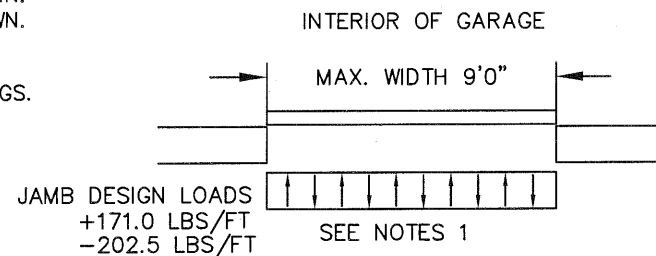
2 X 6 VERTICAL JAMB ATTACHMENT TO GROUTED C-90 BLOCK (2000 PSI GROUT)
 HILTI SLEEVE ANCHOR 3/8" X 2-3/4" STARTING 6" FROM ENDS THEN 24" O.C. (1 1/4" EMBEDMENT) (OR, USE FASTENERS FOR HOLLOW C-90 BLOCK)

*LAGS AND BOLTS CAN BE COUNTERSUNK TO PROVIDE A FLUSH MOUNTING SURFACE.
 *PREPARATION OF WOOD JAMBS BY OTHERS



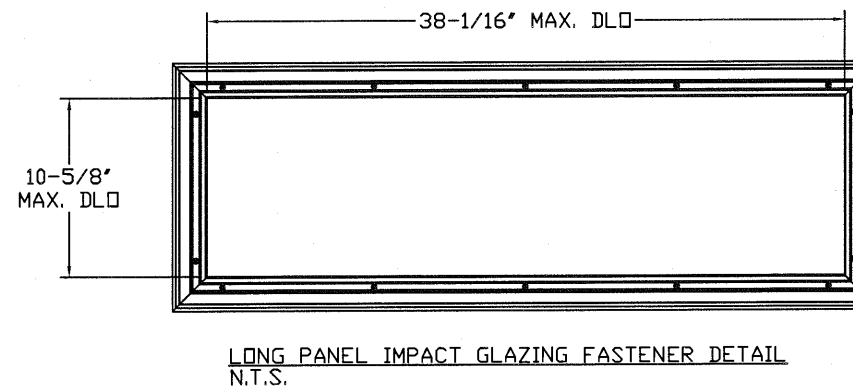
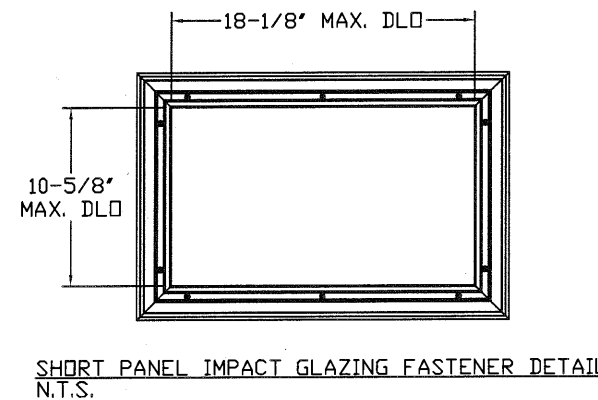
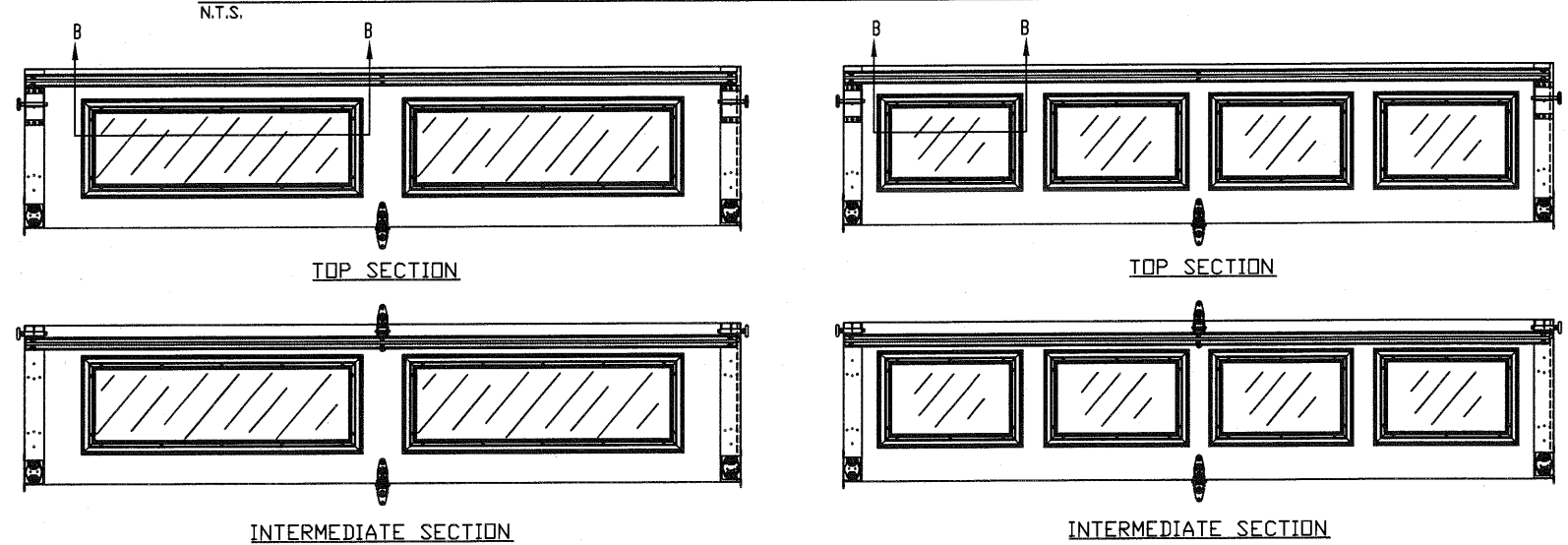
SPECIFICATIONS AND NOTES

- DOORS AND HARDWARE WILL BE DESIGNED, MANUFACTURED AND INSTALLED WITH STANDARDS AS SET FORTH BY DASMA.
- DOOR SECTIONS SHALL BE 27 GA. MIN. (.016") INTERIOR AND EXTERIOR ROLLED FORMED LIGHT COMMERCIAL QUALITY
- DOORS UPTO 7'0" HIGH CONSIST OF (4) SECTIONS AS SHOWN.
- DOORS UPTO 8'0" HIGH CONSIST OF (5) SECTIONS AS SHOWN.
- SUPPORTING STRUCTURAL ELEMENTS SHALL BE DESIGNED BY A REGISTERED PROFESSIONAL ENGINEER FOR WIND LOADS INDICATED ON THIS DRAWING IN ADDITION TO OTHER LOADINGS.



SECTION B-B IMPACT WINDOW DETAIL
 N.T.S.

OPTIONAL SHORT AND LONG PANEL GLAZING LAYOUTS



REV	DESCRIPTIONS OF REVISIONS	DATE	BY
	MAX SIZE 9' x 14'		
	DESIGN LOADS +38.0 PSF -45.0 PSF		
	TEST LOADS +57.0 PSF -67.5 PSF		
	LARGE MISSILE IMPACT RESISTANCE		
MODEL #1500 AMARR STRATFORD 3000 MODEL #1200 AMARR HERITAGE 3000 MODEL #1550 AMARR OAK SUMMIT 3000 SHORT, LONG, FLUSH & OAK SUMMIT PANELS			
SIZE	DRAWN BY RLR	DATE 10/10/16	DRAWING NUMBER
B	CHECKED BY RLR	DATE 10/10/16	IRC-1509-155-15-1
ENTREMATIC			SHEET 2 OF 3
165 CARRIAGE COURT WINSTON-SALEM, NC. 27105			

5921-G W. Friendly Ave., Greensboro, NC 27410

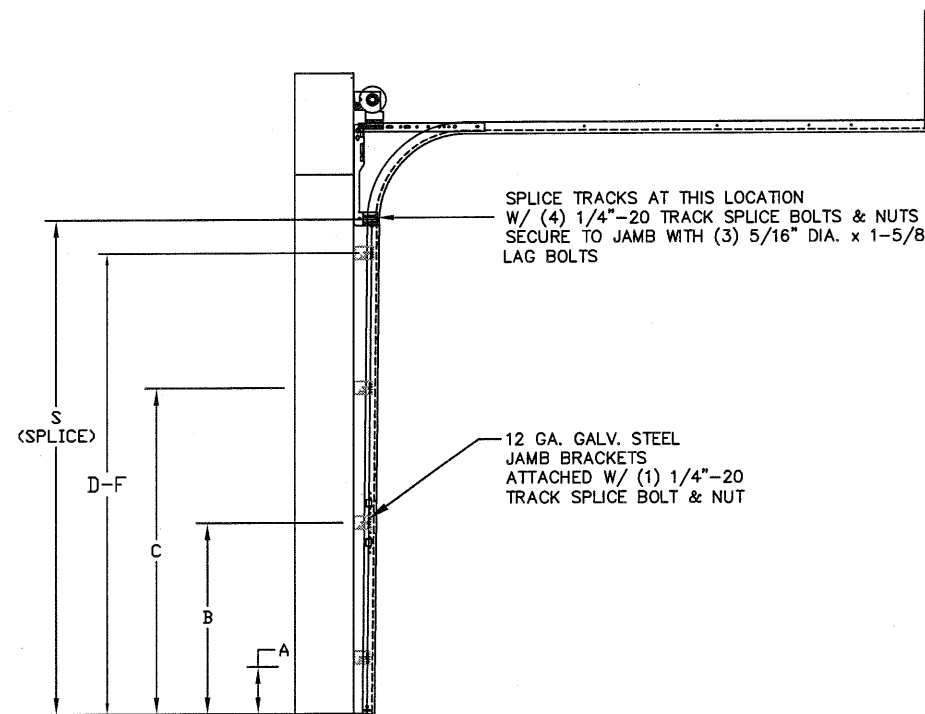
TABLE 1

Section	Panel Type	Center Stile Location (Measured from Left Edge)	
		1st (in)	2nd (in)
6'0	Short	24.406	47.594
6'0	Oak Summit	24.644	47.357
7'0	Short	29.200	54.800
7'0	Oak Summit	29.144	54.857
7'2	Short	30.200	55.800
7'2	Oak Summit	29.894	56.107
7'4	Short	31.200	56.800
7'4	Oak Summit	30.644	57.357
7'6	Short	32.200	57.800
7'6	Long	45.000	
7'6	Oak Summit	45.000	
7'8	Short	32.200	60.000
7'8	Long	46.000	
7'8	Oak Summit	46.000	
7'10	Short	33.000	61.000
7'10	Long	47.000	
7'10	Oak Summit	47.000	
8'0	Short	48.000	
8'0	Long	48.000	
8'0	Oak Summit	48.000	
8'2	Short	49.000	
8'2	Long	49.000	
8'2	Oak Summit	49.000	
8'4	Short	50.000	
8'4	Long	50.000	
8'4	Oak Summit	50.000	
8'6	Short	51.000	
8'6	Long	51.000	
8'6	Oak Summit	51.000	
8'8	Short	52.000	
8'8	Long	52.000	
8'8	Oak Summit	52.000	
8'10	Short	53.000	
8'10	Long	53.000	
8'10	Oak Summit	53.000	
9'0	Short	54.000	
9'0	Long	54.000	
9'0	Oak Summit	54.000	

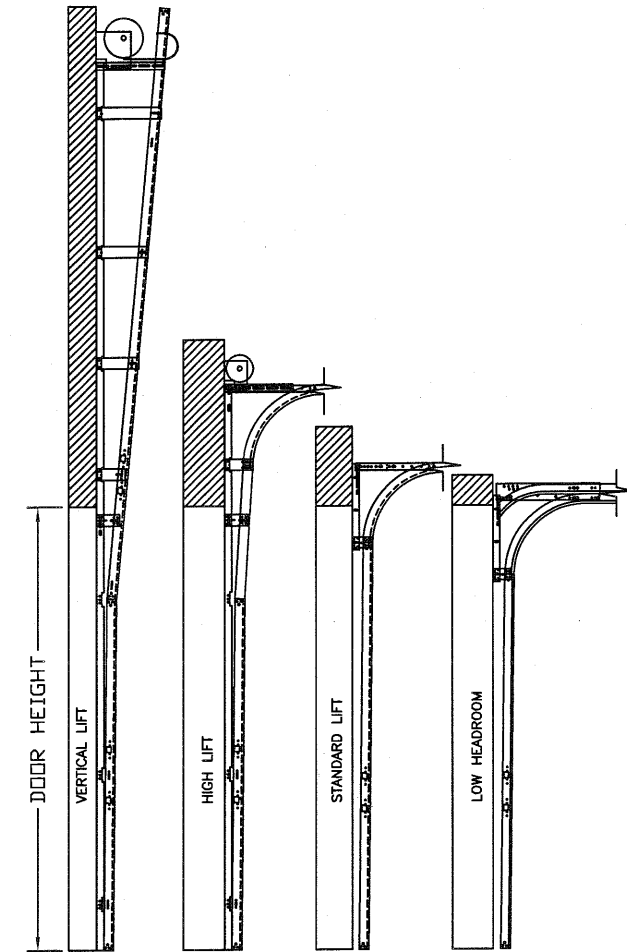
TABLE 2

DOOR HEIGHT	TRACK ATTACHMENT								SPLICE
	A	B	C	D	E	F	G	H	
6' 6"	3.5"	21"	42"	63"					70"
7'	3.5"	21"	42"	63"					76"
7' 6"	3.5"	21"	42"	63"					82"
8'	3.5"	21"	42"	63"					88"
8' 6"	3.5"	21"	42"	63"	84"				94"
9'	3.5"	21"	42"	63"	84"				100"
9' 6"	3.5"	21"	42"	63"	84"				106"
10'	3.5"	21"	42"	63"	84"	105"			112"
10' 6"	3.5"	21"	42"	63"	84"	105"			118"
11'	3.5"	21"	42"	63"	84"	105"			124"
11' 6"	3.5"	21"	42"	63"	84"	105"			130"
12'	3.5"	21"	42"	63"	84"	105"	126"		136"
12' 6"	3.5"	21"	42"	63"	84"	105"	126"		142"
13'	3.5"	21"	42"	63"	84"	105"	126"		148"
13' 6"	3.5"	21"	42"	63"	84"	105"	126"	147"	154"
14'	3.5"	21"	42"	63"	84"	105"	126"	147"	160"

ALL TRACK ATTACHMENT SPACING +/- 2" ALLOWED WITH SYP OR SPF NO. 2 OR BETTER ONLY



TRACK CONFIGURATION FOR 6'6" UP TO 14' TALL DOORS (SEE TABLE 2) N.T.S.



AVAILABLE TRACK CONFIGURATIONS N.T.S.

REV	DESCRIPTIONS OF REVISIONS	DATE	BY
	MAX SIZE 9' x 14'		
	DESIGN LOADS +38.0 PSF -44.9 PSF		
	TEST LOADS +57.0 PSF -67.4 PSF		
	LARGE MISSILE IMPACT RESISTANCE		
	Thomas L. Shelmerdine, PE (TX PE #85829) Structural Solutions, PA (TX Firm #004063)		
	TX		
	MODEL #1500 AMARR STRATFORD 3000 MODEL #1200 AMARR HERITAGE 3000 MODEL #1550 AMARR OAK SUMMIT 3000 SHORT, LONG, FLUSH & OAK SUMMIT PANELS		
SIZE	DRAWN BY RLR	DATE 10/10/16	DRAWING NUMBER
B	CHECKED BY RLR	DATE 10/10/16	IRC-1509-155-15-1
	ENTREMATIC 165 CARRIAGE COURT WINSTON-SALEM, NC 27105		SHEET 3 OF 3

5921-G.W. Friendly Ave., Greensboro, NC 27410