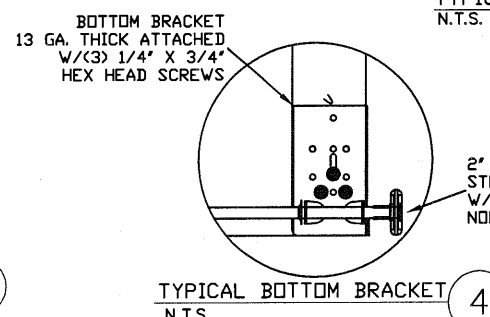
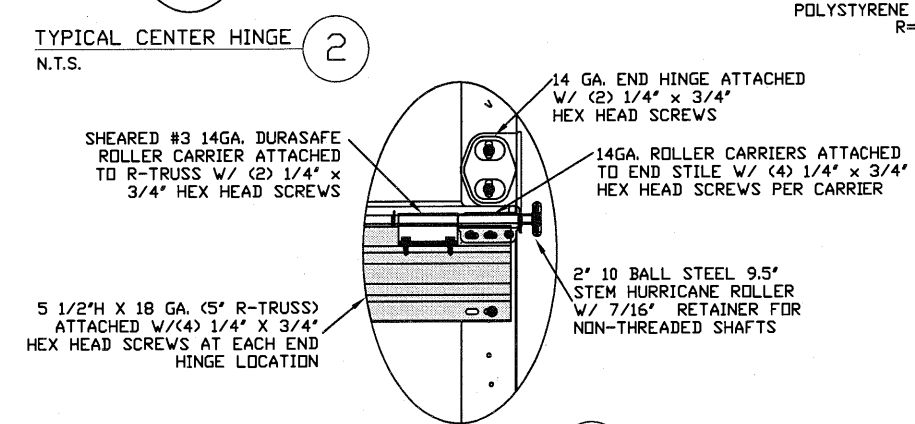
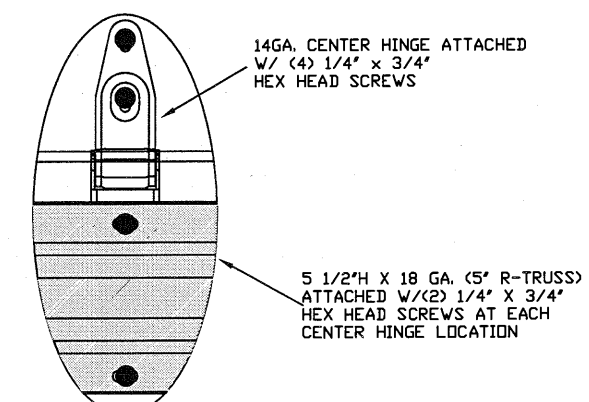
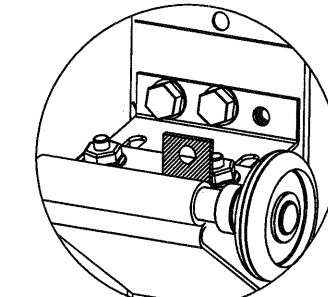
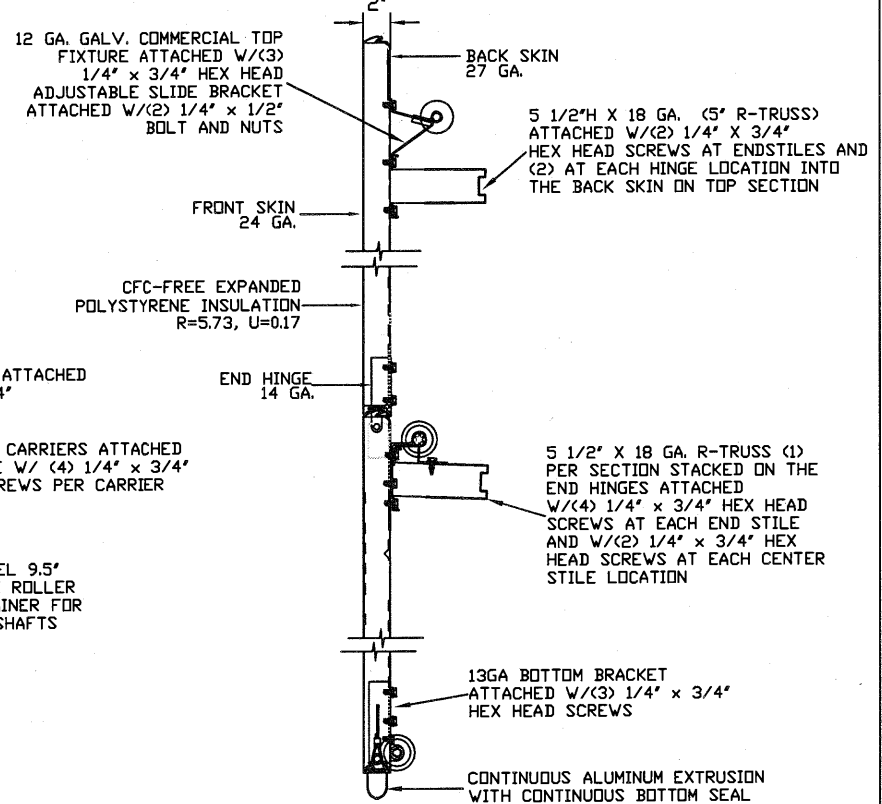
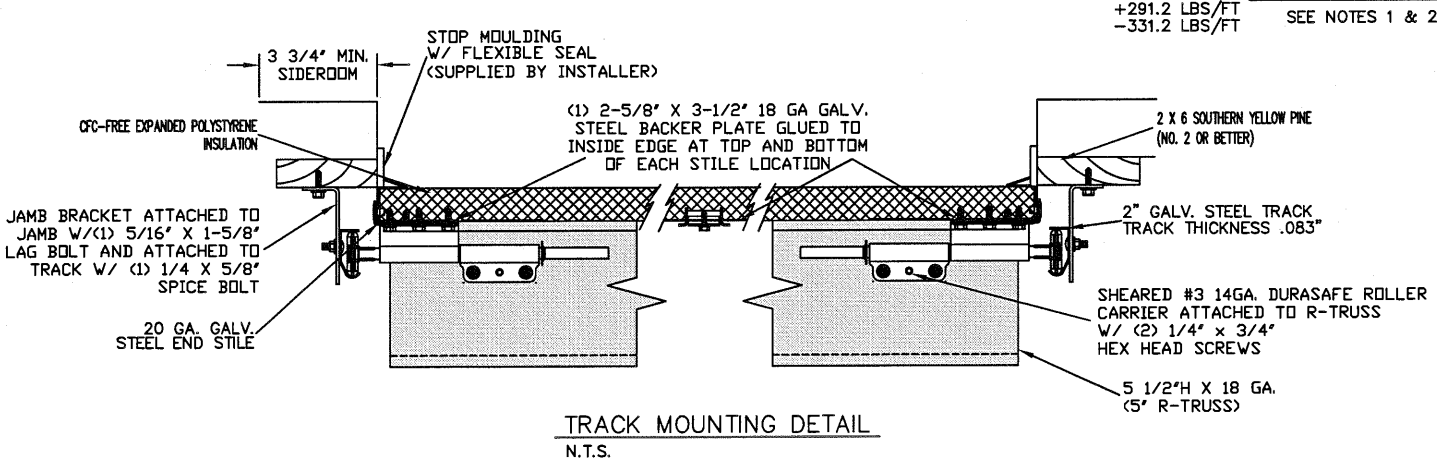
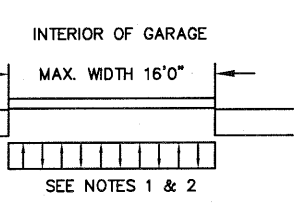
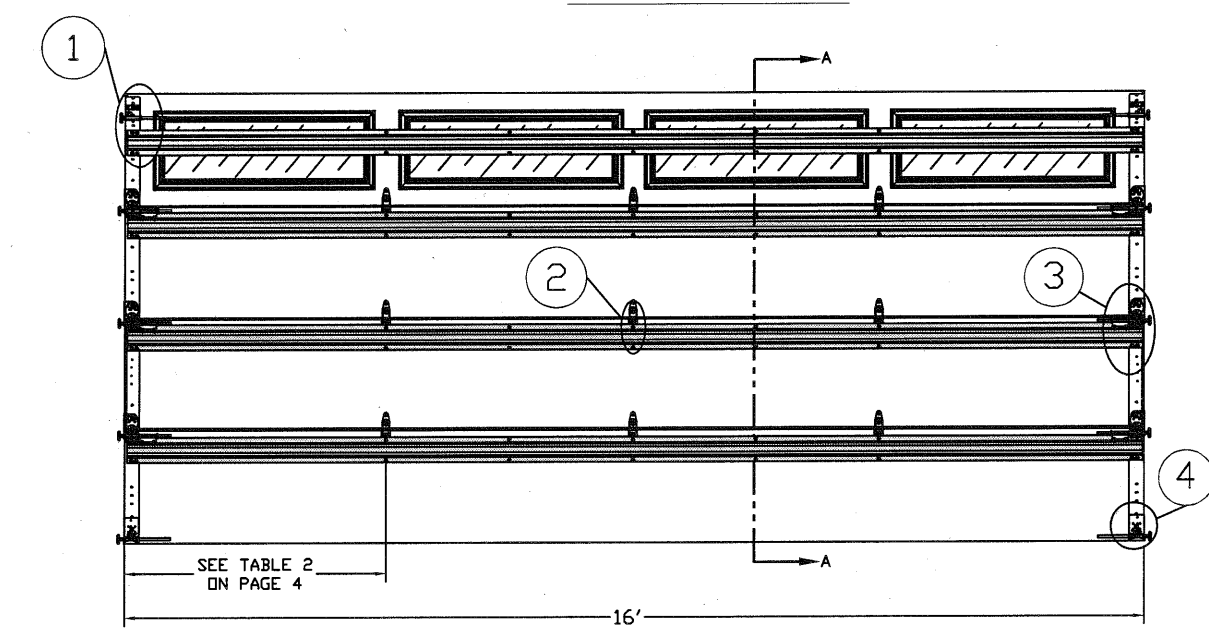
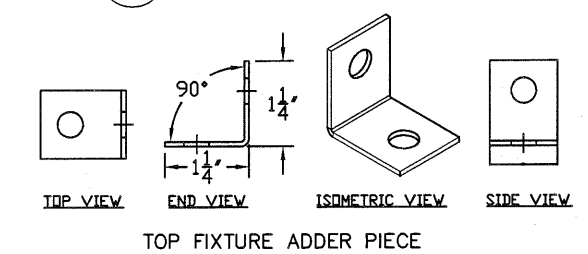


TOP FIXTURE REINFORCEMENT ILLUSTRATION



LARGE MISSILE IMPACT RESISTANT



SPECIFICATIONS AND NOTES

1. ALL THE LOAD FROM THE DOOR IS TRANSFERRED TO THE VERTICAL TRACK, FROM THE TRACK THE LOAD IS TRANSFERRED TO THE VERTICAL JAMBS. THE HORIZONTAL JAMB OR HEADER RECEIVES NO PORTION OF THE LOAD TRANSFERRED FROM THE DOOR.
2. EACH VERTICAL JAMBS RECEIVES MAXIMUM DESIGN LOADS OF: +291.2 LBS/FT & -331.2 LBS/FT
3. DOOR AND HARDWARE WILL BE DESIGNED, MANUFACTURED AND INSTALLED WITH STANDARDS AS SET FORTH BY DASMA.
4. DOOR SECTIONS SHALL BE 24 GA. (.0216) MIN. EXTERIOR SKIN ROLLED FORMED, W/ BAKED ON POLYESTER FINISH
5. SUPPORTING STRUCTURAL ELEMENTS SHALL BE DESIGNED BY A REGISTERED PROFESSIONAL ENGINEER FOR WIND LOADS INDICATED ON THIS DRAWING IN ADDITION TO OTHER LOADINGS.

THE METHOD OF TESTING WAS IN SUBSTANTIAL CONFORMANCE WITH THE PROCEDURE DESCRIBED IN ASTM E330, E1886, E1996, & F588, ANSI/DASMA 108 & 115. THE PRESSURES SHOWN ON THE DRAWINGS WERE CALCULATED USING ASCE 7-98/02/05 WITH THE FOLLOWING PARAMETERS (5 FEET OF DOOR WIDTH IN THE END ZONE, ROOF AT ANY SLOPE, AND I=1.0):

| | | | | | |
|------------------|-----|-----|-----|-----|-----|
| WIND SPEED (MPH) | 155 | 141 | 134 | 128 | 123 |
| EXPOSURE LEVEL | B | C | C | D | D |
| MEAN ROOF HEIGHT | 30' | 15' | 25' | 15' | 25' |

| REV | DESCRIPTION OF REVISIONS | DATE | BY |
|-----|--------------------------|------|----|
| | | | |

MAX SIZE 16' WIDTH 14' HEIGHT (DOOR HEIGHT SUBJECT TO WEIGHT LIMITATIONS)

DESIGN LOADS +36.4 PSF -41.4 PSF

TEST LOADS (1.5 x DESIGN LOADS) +54.6 PSF -62.1 PSF

LARGE MISSILE IMPACT RESISTANCE

Thomas L. Shelmerdine, PE (TX PE #85829) Structural Solutions, PA (TX Firm #F-004063)

STATE OF TEXAS
THOMAS L. SHELMERDINE
85829
LICENSED PROFESSIONAL ENGINEER
TX

5921-G W. Friendly Ave., Greensboro, NC 27410

ENTRE/MATIC

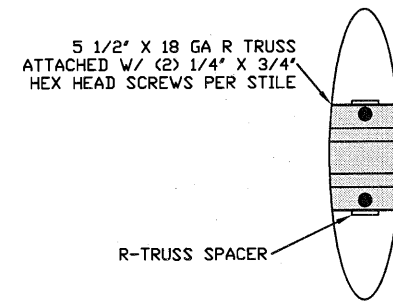
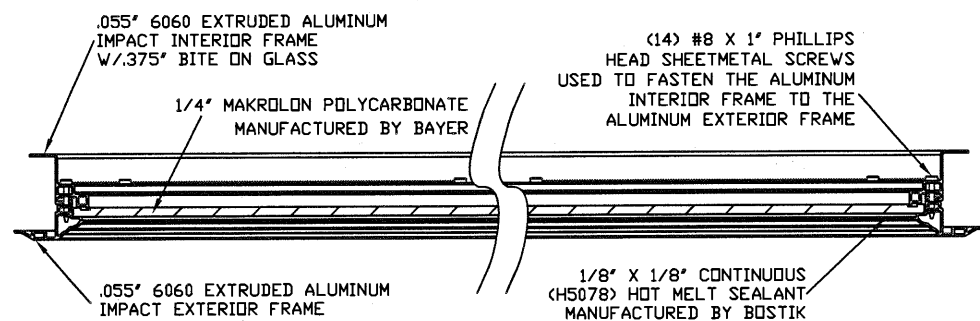
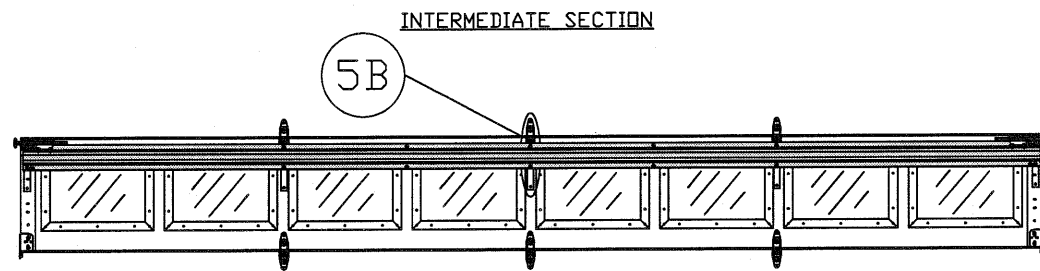
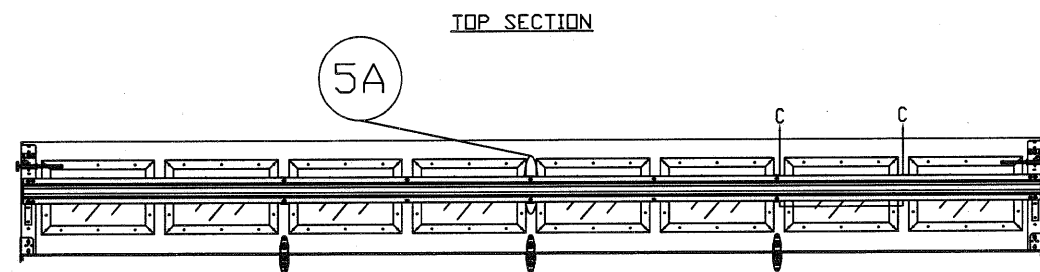
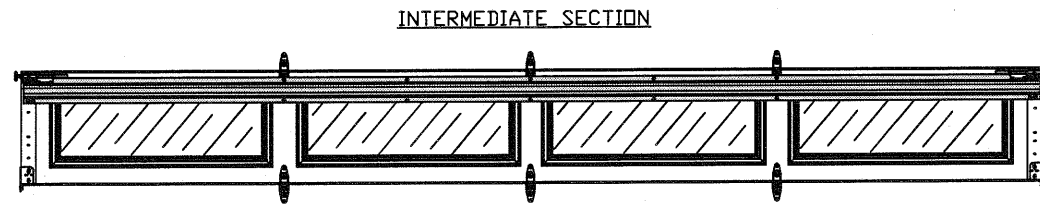
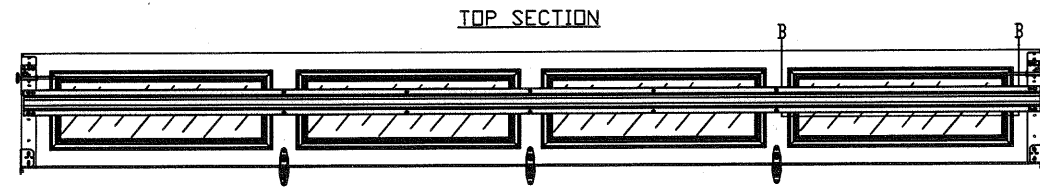
165 CARRIAGE COURT WINSTON-SALEM, N.C. 27105

MODEL #1200 AMARR HERITAGE 3000
MODEL #1200 AMARR OAK SUMMIT 3000
SHORT, LONG, FLUSH & OAK SUMMIT PANELS

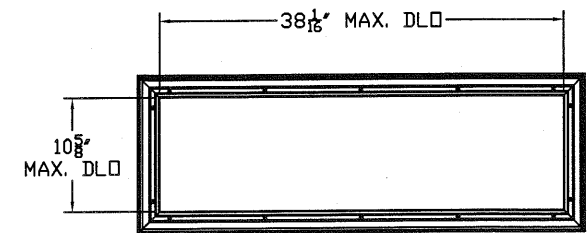
| | | | | | |
|------|------------|-----|------|----------|-------------------|
| SIZE | DRAWN BY | RLR | DATE | 02/10/15 | DRAWING NUMBER |
| B | CHECKED BY | RLR | DATE | 02/10/15 | IRC-1216-155-26-1 |

SHEET 1 OF 4

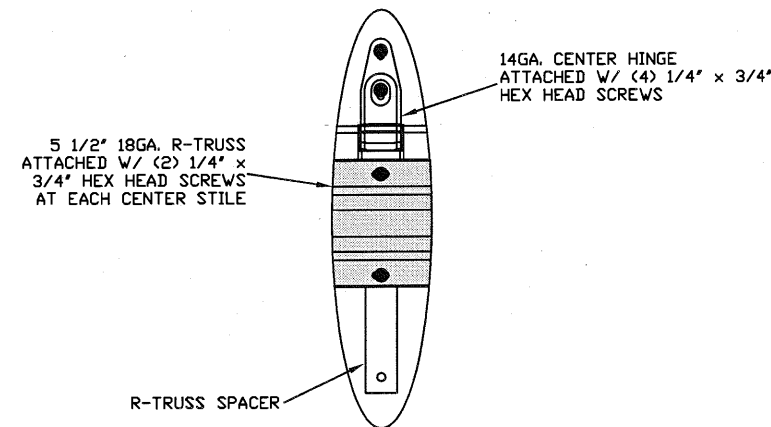
OPTIONAL SHORT AND LONG PANEL GLAZING LAYOUTS



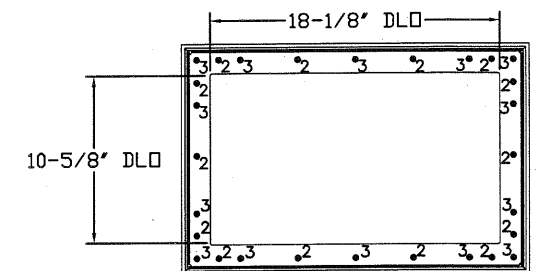
R-TRUSS SPACER 5A
N.T.S.



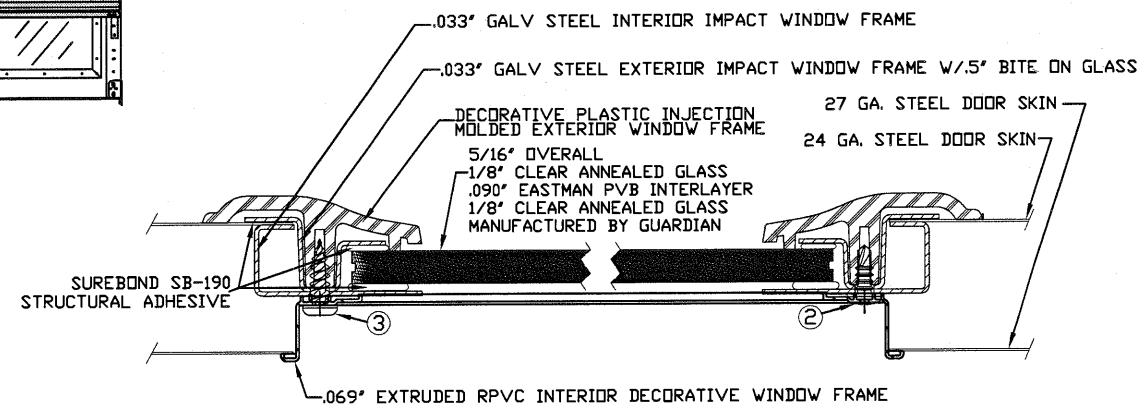
LONG PANEL IMPACT GLAZING FASTENER DETAIL
N.T.S.



R-TRUSS SPACER 5B
N.T.S.



IMPACT GLAZING FASTENER DETAIL
N.T.S.
GLAZING MEETS ASTM E1300-04



- 2 3/16" X 1/2" SCREW - USED TO FASTEN THE STEEL EXTERIOR IMPACT WINDOW FRAME TO THE STEEL INTERIOR IMPACT WINDOW FRAME.
- 1 11/64" X 1/2" SCREW - USED TO FASTEN DECORATIVE PLASTIC MOLDED WINDOW FRAME TO THE ASSEMBLY

| REV | DESCRIPTION OF REVISIONS | DATE | BY |
|-----|--|------|----|
| | | | |
| | <p>MAX SIZE 16' WIDTH 14' HEIGHT (DOOR HEIGHT SUBJECT TO WEIGHT LIMITATIONS)</p> <p>DESIGN LOADS +36.4 PSF -41.4 PSF</p> <p>TEST LOADS (1.5 x DESIGN LOADS) +54.6 PSF -62.1 PSF</p> <p>LARGE MISSILE IMPACT RESISTANCE</p> | | |

Thomas L. Shelmerdine, PE (TX PE #85829)
Structural Solutions, PA (TX Firm #004063)

TX

5921-G W. Friendly Ave., Greensboro, NC 27410

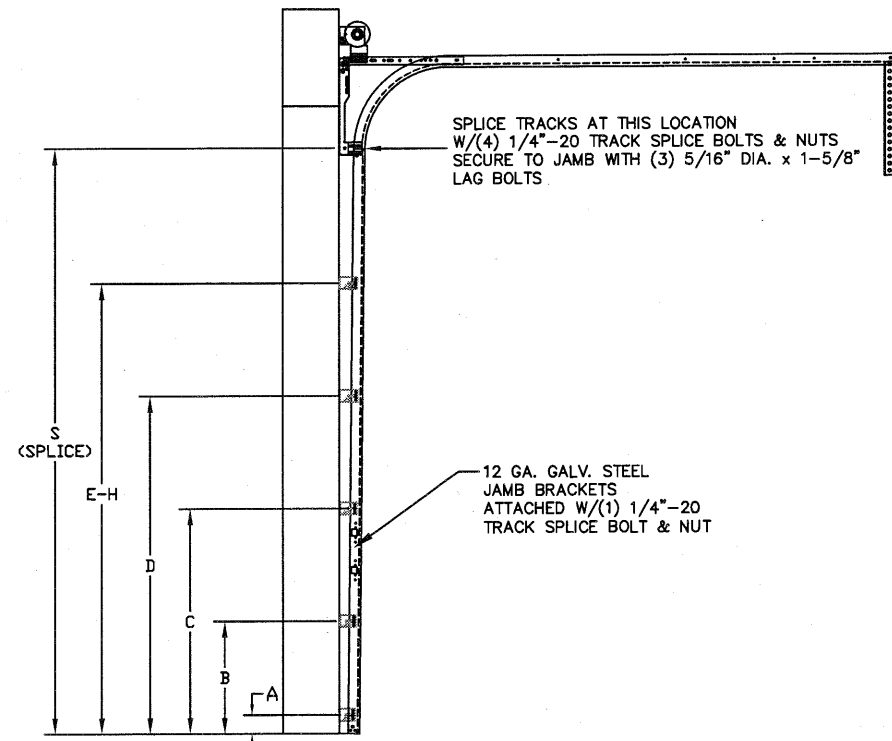
ENTRE/MATIC

165 CARRIAGE COURT WINSTON-SALEM, N.C. 27105

MODEL #1200 AMARR HERITAGE 3000
MODEL #1200 AMARR OAK SUMMIT 3000
SHORT, LONG, FLUSH & OAK SUMMIT PANELS

| SIZE | DRAWN BY | RLR | DATE | 02/10/15 | DRAWING NUMBER |
|------|------------|-----|------|----------|-------------------|
| B | CHECKED BY | RLR | DATE | 02/10/15 | IRC-1216-155-26-1 |

WOOD JAMB ATTACHMENT TO STRUCTURE



TRACK CONFIGURATION FOR 6'6" UP TO 14' TALL DOORS (SEE TABLE 1)
N.T.S.

TABLE 1

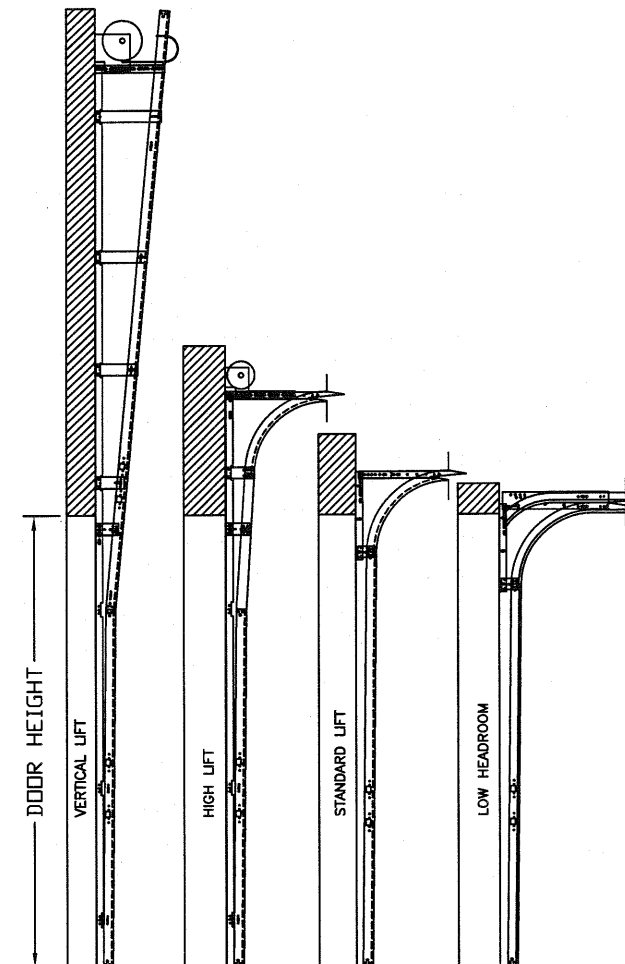
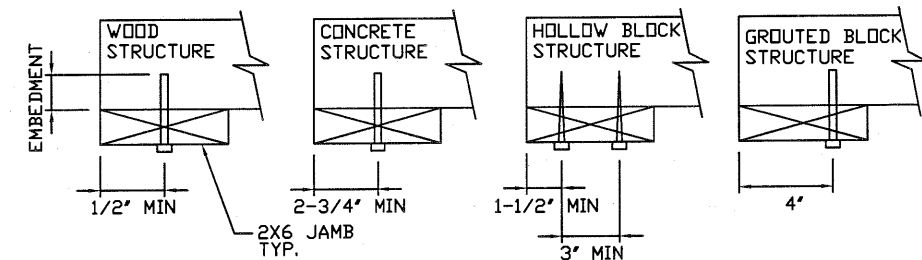
| DOOR HEIGHT | TRACK ATTACHMENT | | | | | | | | | | | | | | SPLICE | |
|-------------|------------------|-----|-----|-----|-----|-----|-----|-----|-----|------|------|------|------|------|--------|------|
| | A | B | C | D | E | F | G | H | I | J | K | L | M | N | | |
| 6' 6" | 3.5" | 10" | 22" | 34" | 46" | 58" | | | | | | | | | | 70" |
| 7' | 3.5" | 10" | 22" | 34" | 46" | 58" | 70" | | | | | | | | | 76" |
| 7' 6" | 3.5" | 10" | 22" | 34" | 46" | 58" | 70" | | | | | | | | | 82" |
| 8' | 3.5" | 10" | 22" | 34" | 46" | 58" | 70" | 82" | | | | | | | | 94" |
| 8' 6" | 3.5" | 10" | 22" | 34" | 46" | 58" | 70" | 82" | | | | | | | | 94" |
| 9' | 3.5" | 10" | 22" | 34" | 46" | 58" | 70" | 82" | 94" | | | | | | | 106" |
| 9' 6" | 3.5" | 10" | 22" | 34" | 46" | 58" | 70" | 82" | 94" | | | | | | | 106" |
| 10' | 3.5" | 10" | 22" | 34" | 46" | 58" | 70" | 82" | 94" | 106" | | | | | | 112" |
| 10' 6" | 3.5" | 10" | 22" | 34" | 46" | 58" | 70" | 82" | 94" | 106" | | | | | | 118" |
| 11' | 3.5" | 10" | 22" | 34" | 46" | 58" | 70" | 82" | 94" | 106" | 118" | | | | | 124" |
| 11' 6" | 3.5" | 10" | 22" | 34" | 46" | 58" | 70" | 82" | 94" | 106" | 118" | | | | | 130" |
| 12' | 3.5" | 10" | 22" | 34" | 46" | 58" | 70" | 82" | 94" | 106" | 118" | 130" | | | | 136" |
| 12' 6" | 3.5" | 10" | 22" | 34" | 46" | 58" | 70" | 82" | 94" | 106" | 118" | 130" | | | | 142" |
| 13' | 3.5" | 10" | 22" | 34" | 46" | 58" | 70" | 82" | 94" | 106" | 118" | 130" | 142" | | | 148" |
| 13' 6" | 3.5" | 10" | 22" | 34" | 46" | 58" | 70" | 82" | 94" | 106" | 118" | 130" | 142" | | | 154" |
| 14' | 3.5" | 10" | 22" | 34" | 46" | 58" | 70" | 82" | 94" | 106" | 118" | 130" | 142" | 154" | | 160" |

ALL TRACK ATTACHMENT SPACING +/-2" ALLOWED WITH SYP NO. 2 OR BETTER ONLY

2 X 6 VERTICAL JAMB ATTACHMENT TO WOOD FRAME STRUCTURE
 5/16" X 3" LAG SCREWS STARTING 6" FROM ENDS THEN 16" O.C. (1 1/2" EMBEDMENT)
2 X 6 VERTICAL JAMB ATTACHMENT TO 2,000 PSI CONCRETE
 HILTI KWIK BOLT 3/8" X 4" STARTING 6" FROM ENDS THEN 24" O.C. (2 1/2" EMBEDMENT)
 HILTI SLEEVE ANCHOR 3/8" X 2-3/4" STARTING 6" FROM ENDS THEN 14" O.C. (1 1/4" EMBEDMENT)
 ITW/RAMSET REDHEAD (TRU-BOLT) 3/8" X 4" STARTING 6" FROM ENDS THEN 24" O.C. (2 1/2" EMBEDMENT)
2 X 6 VERTICAL JAMB ATTACHMENT TO HOLLOW C-90 BLOCK
 SIMPSON 1/4" X 3" TITEN SCREWS STARTING 6" FROM ENDS, USE PAIRS OF FASTENERS (3" APART) AT 8" O.C. (1 1/2" EMBEDMENT)
 HILTI 1/4" X 2-3/4" KWIK-CON II+ SCREWS STARTING 6" FROM ENDS, USE PAIRS OF FASTENERS (3" APART) AT 8" O.C. (1 1/4" EMBEDMENT)

2 X 6 VERTICAL JAMB ATTACHMENT TO GROUTED C-90 BLOCK (2000 PSI GROUT)
 HILTI SLEEVE ANCHOR 3/8" X 2-3/4" STARTING 6" FROM ENDS THEN 16" O.C. (1 1/4" EMBEDMENT) (OR, USE FASTENERS FOR HOLLOW C-90 BLOCK)

*LAGS AND BOLTS CAN BE COUNTERSUNK TO PROVIDE A FLUSH MOUNTING SURFACE.
 *PREPARATION OF WOOD JAMBS BY OTHERS



AVAILABLE TRACK CONFIGURATIONS
N.T.S.

| REV | DESCRIPTION OF REVISIONS | DATE | BY |
|-----|--------------------------|------|----|
| | | | |

MAX SIZE
16' WIDTH
14' HEIGHT
(DOOR HEIGHT SUBJECT TO WEIGHT LIMITATIONS)

DESIGN LOADS
+36.4 PSF
-41.4 PSF

TEST LOADS
(1.5 x DESIGN LOADS)
+54.6 PSF
-62.1 PSF

LARGE MISSILE IMPACT RESISTANCE

Thomas L. Shelmerdine, PE (TX PE #85829)
Structural Solutions, PA (TX Firm #F-004063)

STATE OF TEXAS
THOMAS L. SHELMERDINE
85829
LICENSED PROFESSIONAL ENGINEER
TX

ENTRE//MATIC
165 CARRIAGE COURT WINSTON-SALEM, N.C. 27105

MODEL #1200 AMARR HERITAGE 3000
MODEL #1200 AMARR OAK SUMMIT 3000
SHORT, LONG, FLUSH & OAK SUMMIT PANELS

| | | | |
|------|----------------|---------------|-------------------|
| SIZE | DRAWN BY RLR | DATE 02/10/15 | DRAWING NUMBER |
| B | CHECKED BY RLR | DATE 02/10/15 | IRC-1216-155-26-1 |

SHEET 3 OF 4

5921-G W. Friendly Ave., Greensboro, NC 27410

TABLE 2

| Section Width (ft) | Panel Type | Center Stile Locations (Measured from Left Edge) | | | |
|--------------------|------------|--|----------|----------|----------|
| | | 1st (in) | 2st (in) | 3rd (in) | 4th (in) |
| 14' 0 | Short | 57.76 | 84.00 | 110.11 | |
| 14' 0 | Long | 58.63 | 84.00 | 109.38 | |
| 14' 2 | Short | 58.85 | 85.00 | 111.41 | |
| 14' 2 | Long | 59.17 | 85.00 | 110.83 | |
| 14' 4 | Short | 59.16 | 86.00 | 112.71 | |
| 14' 4 | Long | 60.17 | 86.00 | 111.83 | |
| 14' 6 | Short | 59.86 | 87.00 | 114.01 | |
| 14' 6 | Long | 61.17 | 87.00 | 112.83 | |
| 14' 8 | Short | 60.56 | 88.00 | 115.31 | |
| 14' 8 | Long | 44.81 | 88.00 | 131.19 | |
| 14' 10 | Short | 61.26 | 89.00 | 116.61 | |
| 14' 10 | Long | 45.60 | 89.00 | 132.40 | |
| 15' 0 | Short | 61.94 | 90.00 | 117.94 | |
| 15' 0 | Long | 46.60 | 90.00 | 133.40 | |
| 15' 2 | Short | 62.66 | 91.00 | 119.21 | |
| 15' 2 | Long | 47.60 | 91.00 | 134.40 | |
| 15' 4 | Short | 53.60 | 79.20 | 104.80 | 130.40 |
| 15' 4 | Long | 47.25 | 92.00 | 136.75 | |
| 15' 6 | Short | 46.62 | 93.00 | 139.38 | |
| 15' 6 | Long | 47.60 | 93.00 | 138.40 | |
| 15' 6 | Oak Summit | 47.42 | 93.00 | 138.58 | |
| 15' 8 | Short | 47.62 | 94.00 | 140.38 | |
| 15' 8 | Long | 48.60 | 94.00 | 139.40 | |
| 15' 8 | Oak Summit | 48.02 | 94.00 | 139.98 | |
| 15' 10 | Short | 48.62 | 95.00 | 141.38 | |
| 15' 10 | Long | 49.17 | 95.00 | 140.83 | |
| 15' 10 | Oak Summit | 48.62 | 95.00 | 141.38 | |
| 16' 0 | Short | 49.62 | 96.00 | 142.38 | |
| 16' 0 | Long | 50.60 | 96.00 | 141.40 | |
| 16' 0 | Oak Summit | 48.42 | 96.00 | 143.58 | |

CONTACT ENGINEERING REGARDING SIZES NOT LISTED

TABLE 3

| DOOR HEIGHT | SECTION HEIGHTS | | | | | | | |
|-------------|-----------------|-----|-----|-----|-----|-----|-----|-----|
| | Btm | #2 | #3 | #4 | #5 | #6 | #7 | #8 |
| 14' 0" | 21" | 21" | 21" | 21" | 21" | 21" | 21" | 21" |
| 13' 6" | 21" | 21" | 21" | 21" | 21" | 18" | 18" | 21" |
| 13' 0" | 21" | 21" | 21" | 18" | 18" | 18" | 18" | 21" |
| 12' 6" | 21" | 18" | 18" | 18" | 18" | 18" | 18" | 21" |
| 12' 0" | 21" | 21" | 21" | 21" | 21" | 18" | 21" | |
| 11' 6" | 21" | 21" | 21" | 18" | 18" | 18" | 21" | |
| 11' 0" | 21" | 18" | 18" | 18" | 18" | 18" | 21" | |
| 10' 6" | 21" | 21" | 21" | 21" | 21" | 21" | | |
| 10' 0" | 21" | 21" | 21" | 18" | 18" | 21" | | |
| 9' 6" | 21" | 18" | 18" | 18" | 18" | 21" | | |
| 9' 0" | 18" | 18" | 18" | 18" | 18" | 18" | | |
| 8' 6" | 21" | 21" | 21" | 18" | 21" | | | |
| 8' 0" | 21" | 18" | 18" | 18" | 21" | | | |
| 7' 6" | 18" | 18" | 18" | 18" | 18" | | | |
| 7' 0" | 21" | 21" | 21" | 21" | | | | |
| 6' 6" | 21" | 18" | 18" | 21" | | | | |

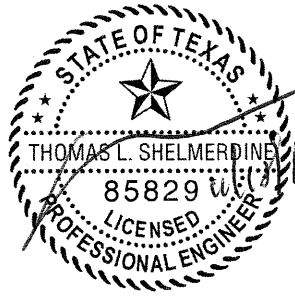
| REV | DESCRIPTION OF REVISIONS | DATE | BY |
|-----|--------------------------|------|----|
| | | | |

MAX SIZE
16' WIDTH
14' HEIGHT
(DOOR HEIGHT SUBJECT TO WEIGHT LIMITATIONS)

DESIGN LOADS
+36.4 PSF
-41.4 PSF

TEST LOADS
(1.5 x DESIGN LOADS)
+54.6 PSF
-62.1 PSF

LARGE MISSILE IMPACT RESISTANCE



THOMAS L. SHELMERDINE
85829
LICENSED PROFESSIONAL ENGINEER
TX

Thomas L. Shelmerdine, PE (TX PE #85829)
Structural Solutions, PA (TX Firm #F-004063)

5921-G W. Friendly Ave., Greensboro, NC 27410

ENTRE//MATIC

165 CARRIAGE COURT WINSTON-SALEM, N.C. 27105

MODEL #1200 AMARR HERITAGE 3000
MODEL #1200 AMARR OAK SUMMIT 3000
SHORT, LONG, FLUSH & OAK SUMMIT PANELS

| | | | | | |
|------|------------|-----|------|----------|-------------------|
| SIZE | DRAWN BY | RLR | DATE | 02/10/15 | DRAWING NUMBER |
| B | CHECKED BY | RLR | DATE | 02/10/15 | IRC-1216-155-26-1 |

SHEET 4 OF 4