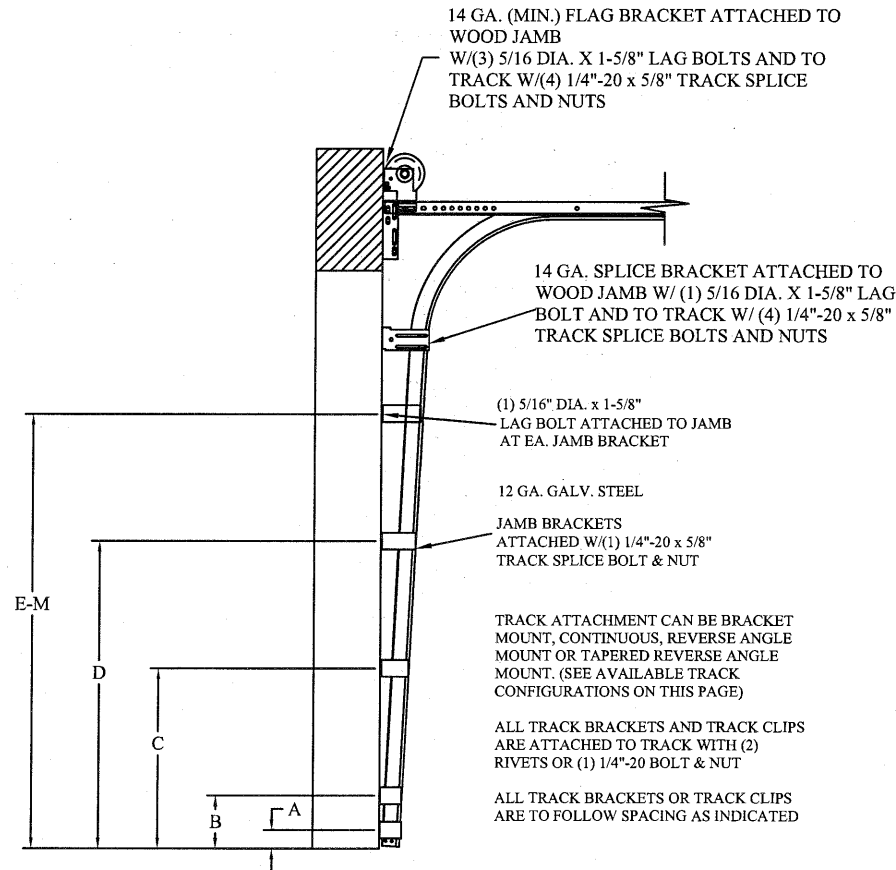
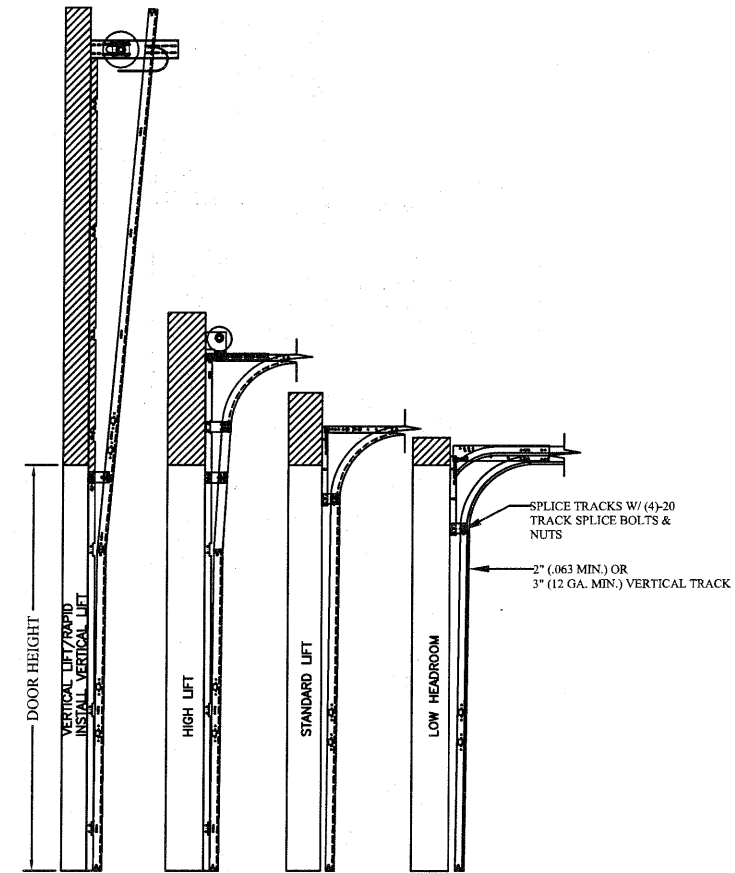


TABLE 1

Section	Center Stile Locations	
	Width (ft)	1st (in)
6'0	36"	
6'2	37"	
6'4	23"	53"
6'6	24"	54"
6'8	25"	55"
6'10	26"	56"
7'0	27"	57"
7'2	28"	58"
7'4	27"	61"
7'6	28"	62"
7'8	29"	63"
7'10	30"	64"
8'0	31"	65"
8'2	32"	66"
8'4	32"	68"
8'6	33"	69"
8'8	34"	70"
8'10	35"	71"
9'0	36"	72"
9'2	37"	73"



TRACK CONFIGURATION FOR UP TO 24' TALL DOORS
SEE TABLE 2



AVAILABLE TRACK CONFIGURATIONS
N.T.S.

TABLE 2

DOOR HEIGHT	TRACK ATTACHMENT													TYPICAL SPLICE	
	A	B	C	D	E	F	G	H	I	J	K	L	M		
7' 0"	3.5"	10"	34"	58"											76"
7' 6"	3.5"	10"	34"	58"											82"
8' 0"	3.5"	10"	34"	58"											88"
8' 6"	3.5"	10"	34"	58"	70"										94"
9' 0"	3.5"	10"	34"	58"	70"	94"									106"
9' 6"	3.5"	10"	34"	58"	70"	94"									112"
10' 0"	3.5"	10"	34"	58"	70"	94"									124"
11' 0"	3.5"	10"	34"	58"	70"	94"	118"								136"
12' 0"	3.5"	10"	34"	58"	70"	94"	118"								148"
13' 0"	3.5"	10"	34"	58"	70"	94"	118"	142"							160"
14' 0"	3.5"	10"	34"	58"	70"	94"	118"	142"							172"
15' 0"	3.5"	10"	34"	58"	70"	94"	118"	142"							184"
16' 0"	3.5"	10"	34"	58"	70"	94"	118"	142"	166"						196"
17' 0"	3.5"	10"	34"	58"	70"	94"	118"	142"	166"						208"
18' 0"	3.5"	10"	34"	58"	70"	94"	118"	142"	166"	190"					220"
19' 0"	3.5"	10"	34"	58"	70"	94"	118"	142"	166"	190"	214"				232"
20' 0"	3.5"	10"	34"	58"	70"	94"	118"	142"	166"	190"	214"				244"
21' 0"	3.5"	10"	34"	58"	70"	94"	118"	142"	166"	190"	214"	238"			256"
22' 0"	3.5"	10"	34"	58"	70"	94"	118"	142"	166"	190"	214"	238"			268"
23' 0"	3.5"	10"	34"	58"	70"	94"	118"	142"	166"	190"	214"	238"	262"		280"

ALL TRACK ATTACHMENTS +/- 2" ALLOWED USING SYP OR SPF NO.2 OR BETTER ONLY.

REV	DESCRIPTION OF REVISIONS	DATE	BY

MAX SIZE
9'2" x 24"

DESIGN LOADS
+24.2 PSF
-28.4 PSF

TEST LOADS
+36.3 PSF
-42.6 PSF

LARGE MISSILE IMPACT RESISTANCE

Thomas L. Shelmerdine, PE (TX PE #85829)
Structural Solutions, PA (TX Firm #F-004063)

STATE OF TEXAS
THOMAS L. SHELMERDINE
85829
LICENSED PROFESSIONAL ENGINEER

TX

5921-G W. Friendly Ave., Greensboro, NC 27410

Amarr
ENTREMATIC

MODEL 2000 AMARR 2002, 2012, 2022

SIZE	DRAWN BY	RLR	DATE	8/1/17	DRAWING NUMBER
B	CHECKED BY	RLR	DATE	8/1/17	IBC-2009-130-11-1

ENTREMATIC
165 CARRIAGE COURT WINSTON-SALEM, N.C. 27105

SHEET 3 OF 3