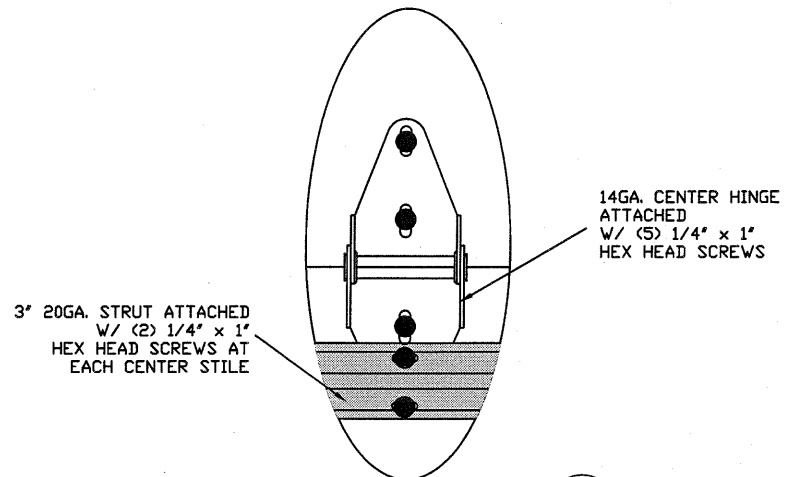
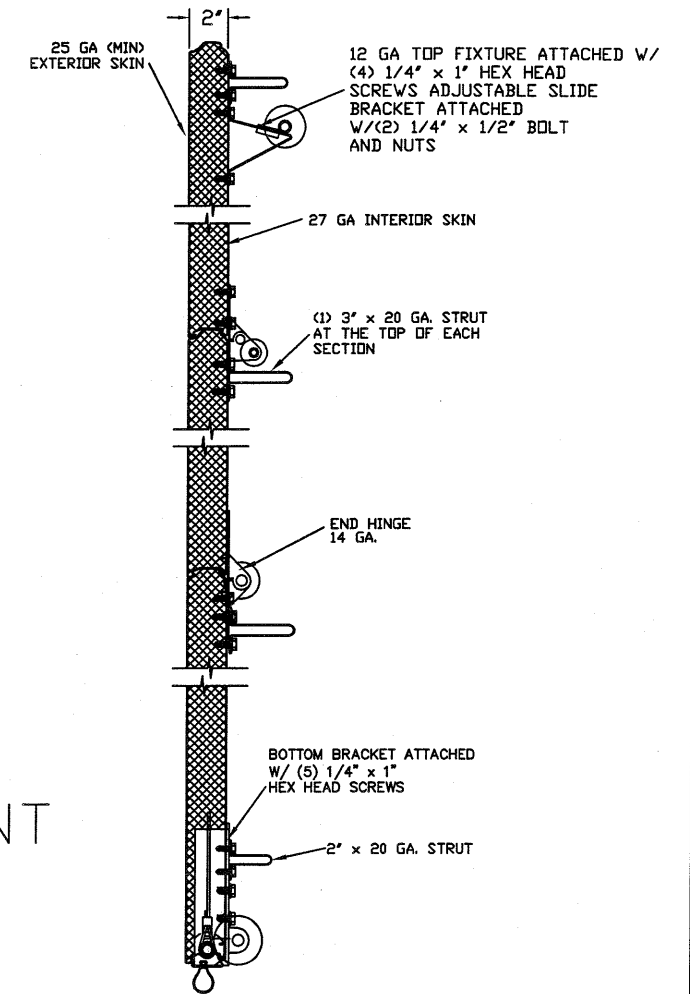


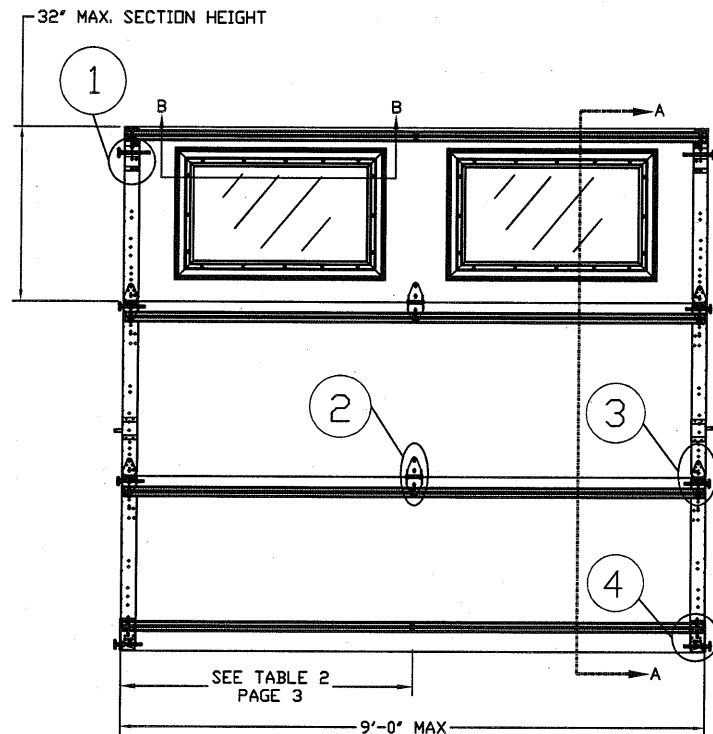
TYPICAL TOP FIXTURES
N.T.S.



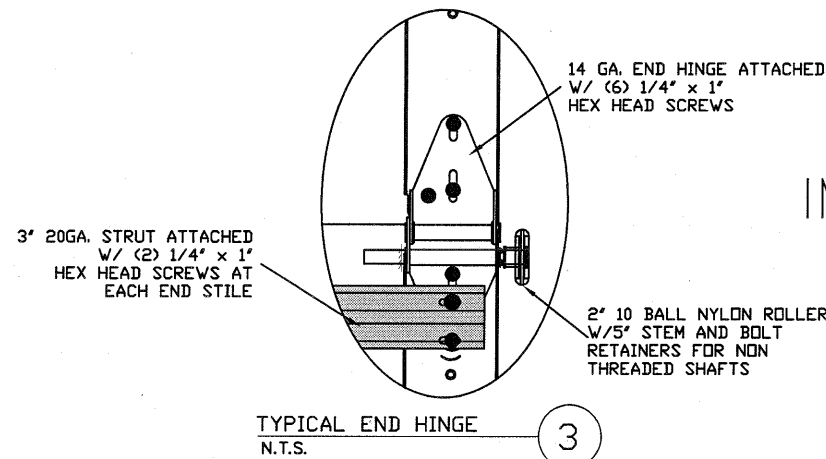
TYPICAL CENTER HINGE
N.T.S.



SECTION A-A (SIDE VIEW)
N.T.S.

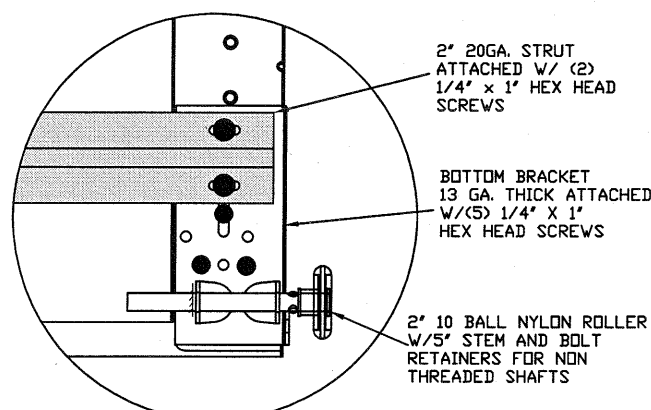


INSIDE ELEVATION
N.T.S.

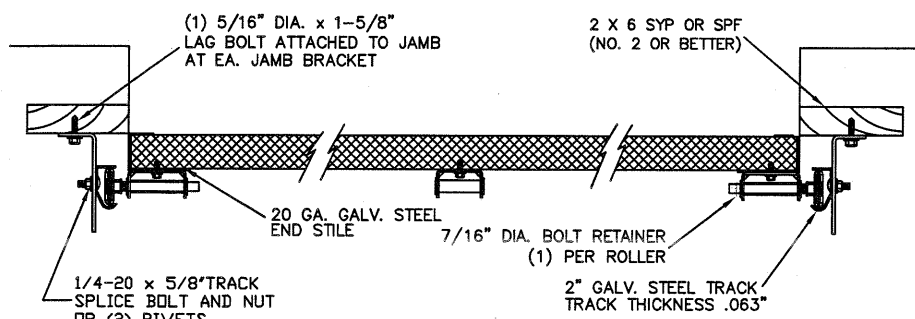


TYPICAL END HINGE
N.T.S.

LARGE MISSILE IMPACT RESISTANT



TYPICAL BOTTOM BRACKET
N.T.S.



TRACK MOUNTING DETAIL
N.T.S.

THE METHOD OF TESTING WAS IN SUBSTANTIAL CONFORMANCE WITH THE PROCEDURE DESCRIBED IN ASTM E330, E1886, E1996 & F588, DASMA 108 & 115. THE PRESSURES SHOWN ON THE DRAWINGS WERE CALCULATED USING ASCE 7-16 WITH THE FOLLOWING PARAMETERS (5 FEET OF DOOR WIDTH IN THE END ZONE, ROOF AT ANY SLOPE):

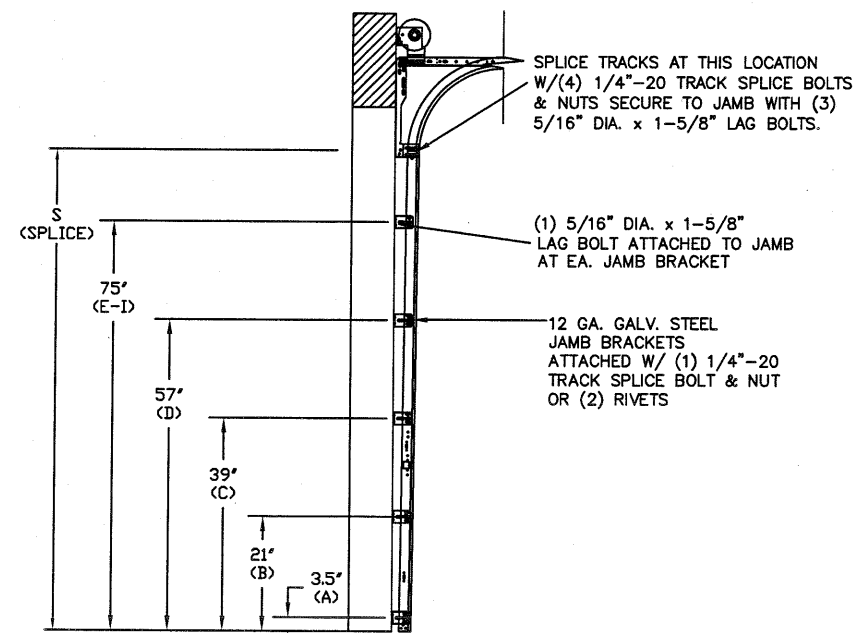
| | | | | | |
|------------------|-----|-----|-----|-----|-----|
| WIND SPEED (MPH) | 195 | 177 | 168 | 160 | 154 |
| EXPOSURE LEVEL | B | C | C | D | D |
| MEAN ROOF HEIGHT | 30' | 15' | 25' | 15' | 25' |

| REV | DESCRIPTION OF REVISIONS | DATE | BY |
|-----|--------------------------|------|----|
| | | | |

| | | | |
|--|--|--|---|
| MAX SIZE 9'0 x 14' | Thomas L. Shelmerdine, PE (TX PE #85829) Structural Solutions, PA (TX Firm #F-004063) | | 5921-G.W. Friendly Ave., Greensboro, NC 27410 |
| DESIGN LOADS +35.6 PSF -41.9 PSF | | | |
| TEST LOADS (1.5 x DESIGN LOADS) +53.4 PSF -62.9 PSF | | | |
| LARGE MISSILE IMPACT RESISTANCE | TX | | |

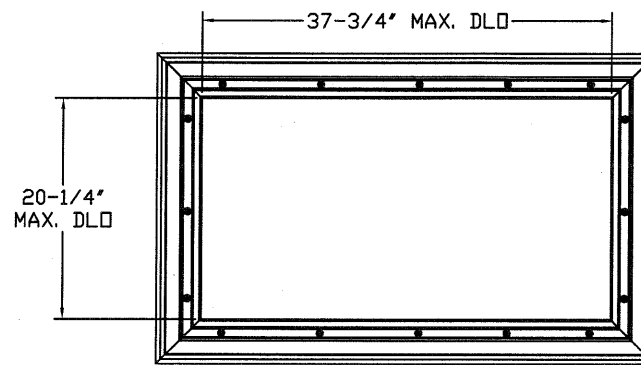
MODEL #3000 AMARR CLASSICA 3000

| | | | | | |
|------|------------|-----|------|---------|-------------------|
| SIZE | DRAWN BY | DRC | DATE | 1/18/21 | DRAWING NUMBER |
| B | CHECKED BY | DLJ | DATE | 1/21/21 | IRC-3309-150-15-1 |



TRACK CONFIGURATION FOR 8' TALL DOORS
N.T.S.

SEE TABLE 1 FOR ADDITIONAL DOOR HEIGHTS AND THEIR TRACK SPACING REQUIREMENTS.



GLAZING FASTENER DETAIL
N.T.S.

SPECIFICATIONS AND NOTES

1. ALL THE LOAD FROM THE DOOR IS TRANSFERRED TO THE VERTICAL TRACK, FROM THE TRACK THE LOAD IS TRANSFERRED TO THE VERTICAL JAMBS. THE HORIZONTAL JAMB OR HEADER RECEIVES NO PORTION OF THE LOAD TRANSFERRED FROM THE DOOR.
2. EACH VERTICAL JAMBS RECEIVES MAXIMUM DESIGN LOADS OF: +160.2 LBS/FT & -188.6 LBS/FT
3. DOOR AND HARDWARE WILL BE DESIGNED, MANUFACTURED AND INSTALLED WITH STANDARDS AS SET FORTH BY DASMA.
4. DOOR SECTIONS SHALL BE 25 GA. EXTERIOR MIN. (.019"), AND 27 GA. INTERIOR MIN. (.014") ROLLED FORMED LIGHT COMMERCIAL QUALITY
5. SUPPORTING STRUCTURAL ELEMENTS SHALL BE DESIGNED BY A REGISTERED PROFESSIONAL ENGINEER FOR WIND LOADS INDICATED ON THIS DRAWING IN ADDITION TO OTHER LOADINGS.
6. DOOR IS MANUFACTURED AND TESTED IN ACCORDANCE WITH THE 2018 IRC/IBC

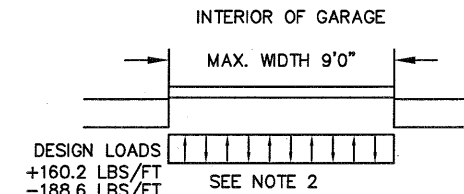
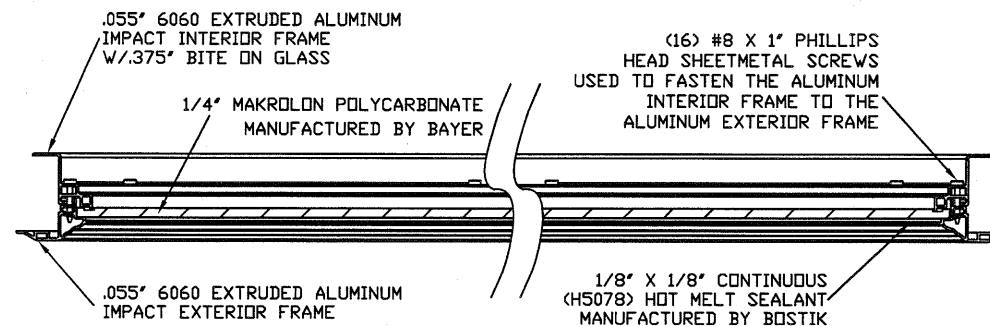


TABLE 1

| HEIGHT | TRACK ATTACHMENT | | | | | | | | | SPLICE |
|--------|------------------|-----|-----|-----|-----|-----|------|------|------|--------|
| | A | B | C | D | E | F | G | H | I | |
| 6'2" | 3.5 | 21" | 39" | 57" | | | | | | 66" |
| 7'0" | 3.5 | 21" | 39" | 57" | | | | | | 76" |
| 8'0" | 3.5 | 21" | 39" | 57" | 75" | | | | | 88" |
| 8'6" | 3.5 | 21" | 39" | 57" | 75" | | | | | 94" |
| 9'0" | 3.5 | 21" | 39" | 57" | 75" | 93" | | | | 100" |
| 9'6" | 3.5 | 21" | 39" | 57" | 75" | 93" | | | | 106" |
| 10' | 3.5 | 21" | 39" | 57" | 75" | 93" | | | | 112" |
| 11'0" | 3.5 | 21" | 39" | 57" | 75" | 93" | 111" | | | 124" |
| 11'6" | 3.5 | 21" | 39" | 57" | 75" | 93" | 111" | | | 130" |
| 12'0" | 3.5 | 21" | 39" | 57" | 75" | 93" | 111" | 129" | | 136" |
| 12'6" | 3.5 | 21" | 39" | 57" | 75" | 93" | 111" | 129" | | 142" |
| 13'0" | 3.5 | 21" | 39" | 57" | 75" | 93" | 111" | 129" | | 148" |
| 13'6" | 3.5 | 21" | 39" | 57" | 75" | 93" | 111" | 129" | 147" | 154" |
| 14'0" | 3.5 | 21" | 39" | 57" | 75" | 93" | 111" | 129" | 147" | 160" |

ALL TRACK AND ATTACHMENT SPACING +/-2" ALLOWED WITH SYP OR SPF NO. 2 OR BETTER ONLY



SECTION B-B IMPACT WINDOW DETAIL
N.T.S.

| REV | DESCRIPTION OF REVISIONS | DATE | BY |
|---|--|--------------|-------------------|
| | | | |
| | MAX SIZE 9'0" x 14' | | |
| | DESIGN LOADS +35.6 PSF -41.9 PSF | | |
| | TEST LOADS (1.5 x DESIGN LOADS) +53.4 PSF -62.85 PSF | | |
| | LARGE MISSILE IMPACT RESISTANCE | | |
| | Thomas L. Shelmerdine, PE (TX PE #85829) Structural Solutions, PA (TX Firm #F-004063) | | |
| | STATE OF TEXAS THOMAS L. SHELMERDINE 85829 LICENSED PROFESSIONAL ENGINEER TX | | |
| | 5921-G.W. Friendly Ave., Greensboro, NC 27410 | | |
| Amarr | | | |
| MODEL #3000 AMARR CLASSICA 3000 | | | |
| SIZE | DRAWN BY DRC | DATE 1/18/21 | DRAWING NUMBER |
| B | CHECKED BY DLJ | DATE 1/21/21 | IRC-3309-150-15-1 |
| AMARR COMPANY 165 CARRIAGE COURT WINSTON-SALEM, N.C. 27105 | | | SHEET 2 OF 3 |

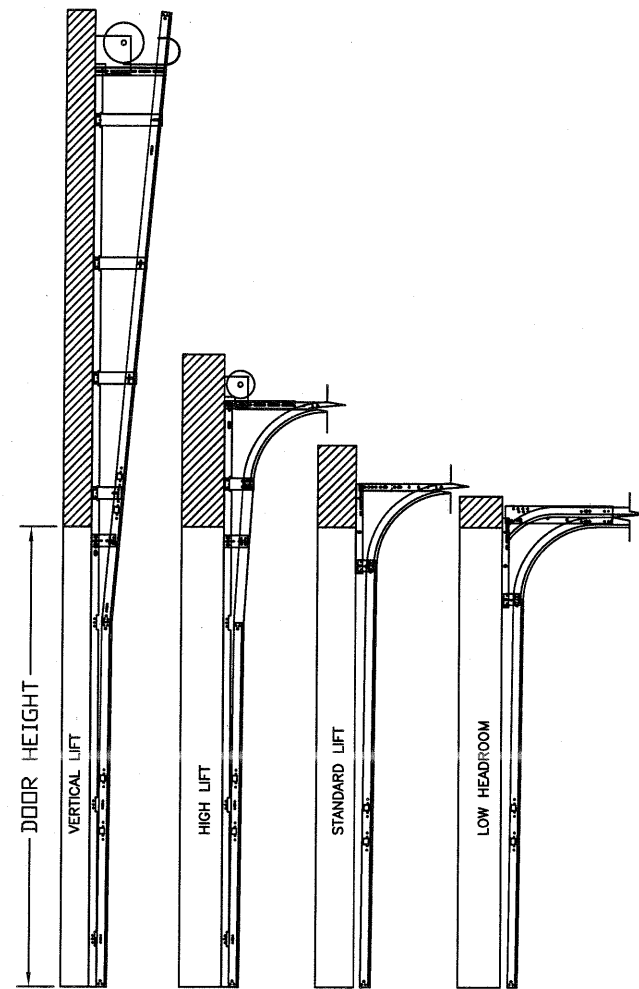
TABLE 2

| Section | Panel Type | Center Stile Location (Measured from Left) | |
|---------------|------------|---|-------------|
| | | 1st (in) | 2nd (in) |
| Width (ft) | | | |
| 6' 0 | Short | 24.6 | 47.4 |
| 7' 0 | Short | 29.1 | 54.9 |
| 7' 2 | Short | 29.9 | 56.1 |
| 7' 4 | Short | 30.6 | 57.4 |
| 7' 6 | Long/Short | 45.0 | |
| 7' 8 | Long/Short | 46.0 | |
| 7' 10 | Long/Short | 47.0 | |
| 8' 0 | Long/Short | 48.0 | |
| 8' 2 | Long/Short | 49.0 | |
| 8' 4 | Long/Short | 50.0 | |
| 8' 6 | Long/Short | 51.0 | |
| 8' 8 | Long/Short | 52.0 | |
| 8' 10 | Long/Short | 53.0 | |
| 9' 0 | Long/Short | 54.0 | |

WOOD JAMB ATTACHMENT TO STRUCTURE

2 X 6 VERTICAL JAMB ATTACHMENT TO WOOD FRAME STRUCTURE
 5/16" X 3" LAG SCREWS STARTING 6" FROM ENDS THEN 24" O.C. (1 1/2" EMBEDMENT)
2 X 6 VERTICAL JAMB ATTACHMENT TO 2,000 PSI CONCRETE
 HILTI KWIK BOLT 3/8" X 4" STARTING 6" FROM ENDS THEN 24" O.C. (2 1/2" EMBEDMENT)
 ITW/RAMSET REDHEAD (TRU-BOLT) 3/8" X 4" STARTING 6" FROM ENDS THEN 24" O.C. (2 1/2" EMBEDMENT)
2 X 6 VERTICAL JAMB ATTACHMENT TO HOLLOW C-90 BLOCK
 SIMPSON 1/4" X 3" TITEN SCREWS STARTING 6" FROM ENDS, USE PAIRS OF FASTENERS
 (3" APART) AT 16" O.C. (1 1/2" EMBEDMENT)
 HILTI 1/4" X 2-3/4" KWIK-CON II+ SCREWS STARTING 6" FROM ENDS, USE PAIRS OF
 FASTENERS (3" APART) AT 16" O.C. (1 1/4" EMBEDMENT)
2 X 6 VERTICAL JAMB ATTACHMENT TO GROUTED C-90 BLOCK (2000 PSI GROUT)
 HILTI SLEEVE ANCHOR 3/8" X 2-3/4" STARTING 6" FROM ENDS THEN 24" O.C. (1 1/4"
 EMBEDMENT) (OR, USE FASTENERS FOR HOLLOW C-90 BLOCK)

*LAGS AND BOLTS CAN BE COUNTERSUNK TO PROVIDE A FLUSH MOUNTING SURFACE.
 *PREPARATION OF WOOD JAMBS BY OTHERS



AVAILABLE TRACK CONFIGURATIONS
 N.T.S.

TABLE 3

| SECTION | STRUT SIZE |
|---------|------------|
| TOP | 3" |
| 5TH | 3" |
| 4TH | 3" |
| 3RD | 3" |
| 2ND | 3" |
| BOTTOM | 3" |
| | 2" |

| REV | DESCRIPTION OF REVISIONS | DATE | BY |
|-----|--------------------------|------|----|
| | | | |

MAX SIZE
 9'0 x 14'

DESIGN LOADS
 +35.6 PSF
 -41.9 PSF

TEST LOADS
 (1.5 x DESIGN LOADS)
 +53.4 PSF
 -62.85 PSF

LARGE MISSILE
 IMPACT
 RESISTANCE

Thomas L. Shelmerdine, PE (TX PE #85829)
 Structural Solutions, PA (TX Firm #F-004063)

TX

Amarr

MODEL #3000 AMARR CLASSICA 3000

| | | | | | |
|------|------------|-----|------|---------|-------------------|
| SIZE | DRAWN BY | DRC | DATE | 1/18/21 | DRAWING NUMBER |
| B | CHECKED BY | DLJ | DATE | 1/21/21 | IRC-3309-150-15-1 |

AMARR COMPANY
 165 CARRIAGE COURT WINSTON-SALEM, N.C. 27105

SHEET 3 OF 3

5921-G W. Friendly Ave., Greensboro, NC 27410