

'CLASSIC' RAISED PANEL EMBOSS DOORS				'CARRIAGE HOUSE' RAISED PANEL EMBOSS DOORS	
MODELS	24 GA	25 GA	24 GA	MODELS	25 GA
CLOPAY	84A, 94	73, 75	98	CLOPAY 'GALLERY'	GD5S, GR5S
IDEAL	4RST	6RST	4F	HOLMES 'ARTISTRY'	AR5S
HOLMES	48, 48B	42, 42B	--	IDEAL 'CARRIAGE HOUSE'	ED5S
	SHORT PANEL		FLUSH	SHORT PANEL	

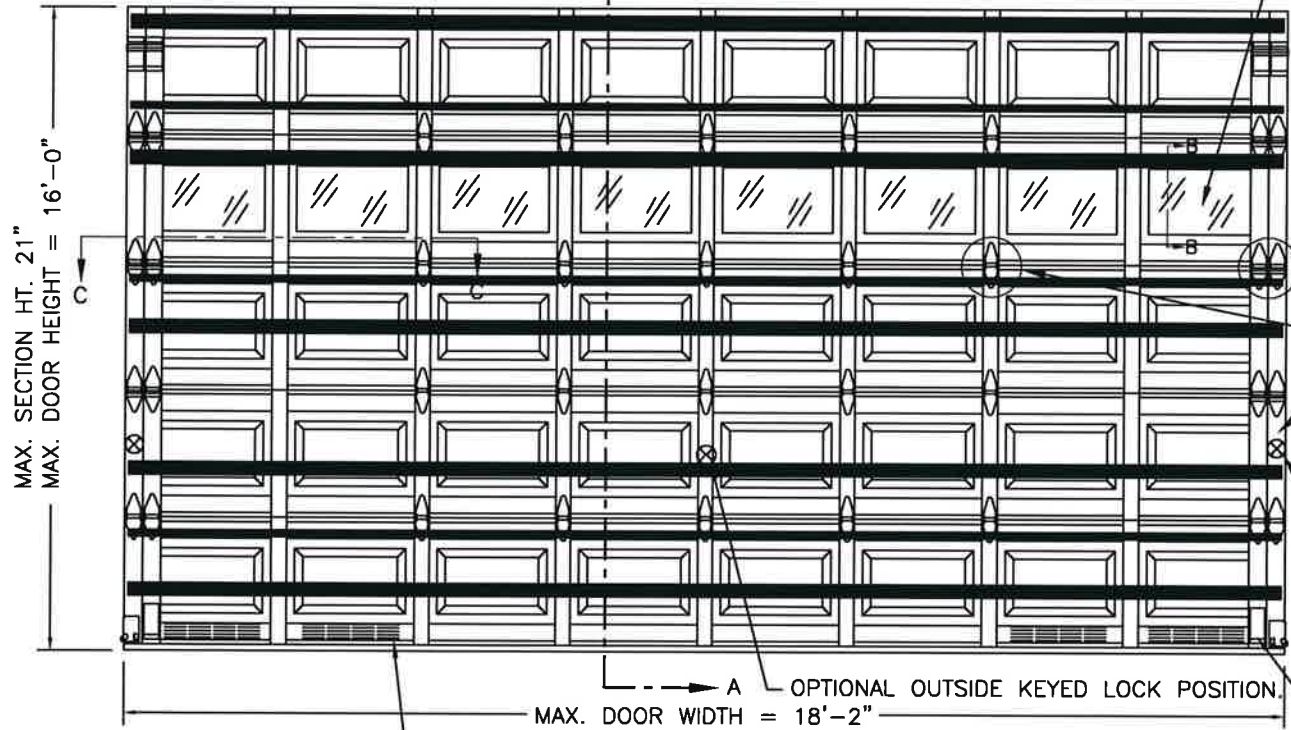
SHEET:
1 OF 4

REVISIONS					
REV. NO.	ZONE:	DATE:	ECN NO.	APPVD:	DESCRIPTION
08	-	07/2021	-	JDW	UPDATED TITLE BLOCK AND ADDED COMPLIANCE STATEMENT.

THIS PRODUCT COMPLIES WITH THE 2018 IBC/IRC.

OPTIONAL IMPACT RESISTANT GLAZING. SEE SECTION B-B ON SHEET TWO FOR DETAILS. (GLAZING SHOWN IN INTERMEDIATE SECTION.) MAX. IMPACT RESISTANT GLAZING SIZE IS 21-5/8"x14-1/8".

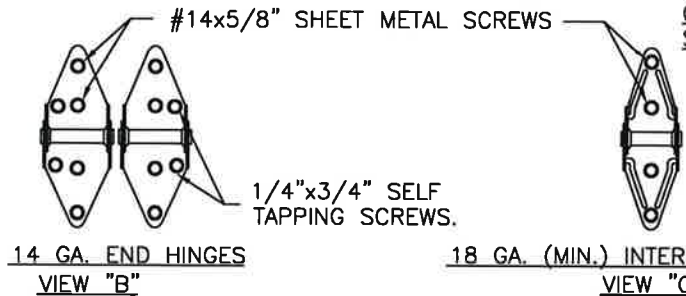
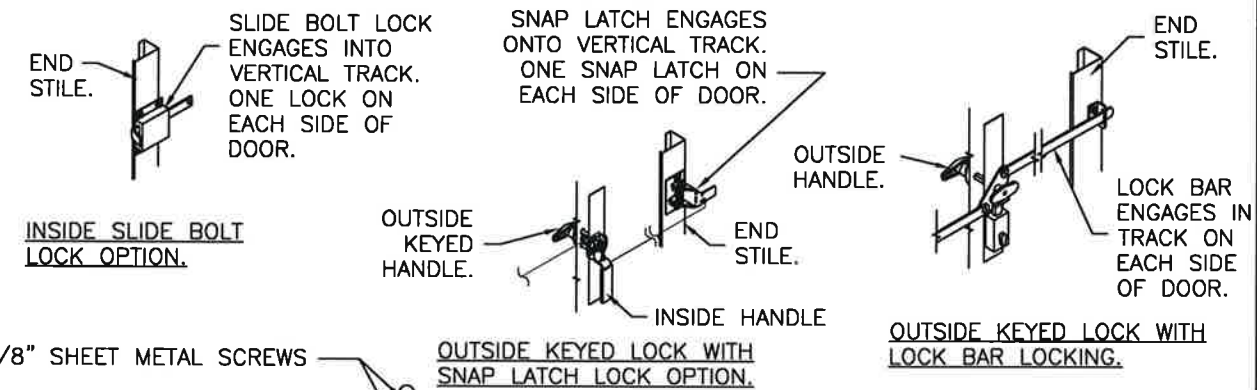
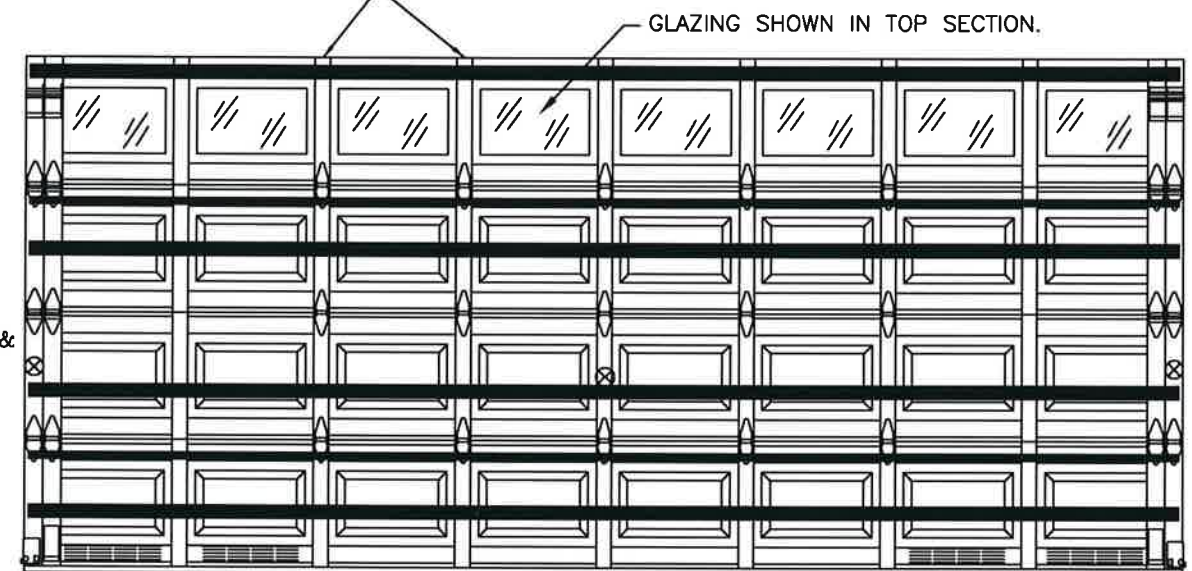
ONE INTERMEDIATE STILE BETWEEN EACH EMBOSS LOCATION. ATTACHED W/ TOG-L-LOC (TOP & BTM) AND URETHANE ADHESIVE (ALONG CENTER).



DOOR HEIGHT	# OF SECTIONS
UP TO 7'0"	4
7'3" TO 8'9"	5
9'0" TO 10'6"	6
10'9" TO 12'3"	7
12'6" TO 14'0"	8
14'3" TO 15'9"	9
16'0"	10
MAX SECTION HEIGHT: 21'	

LOCATION OF OPTIONAL VENTS. TOTAL VENT OPENINGS: 60 IN² PER VEHICLE.

(2) LHR TOP BRACKETS USED AS INNER BOTTOM BRACKET. (1) 3-IN ROLLER CARRIER (P/N 0120394) USED WITH 3" TRACK.



Mark Westerfield
7/21/21

DESIGN ENGINEER:
MARK WESTERFIELD, P.E.
FLORIDA P.E. #48495, NC P.E. #23832, TEXAS P.E. #91513

DESIGN LOADS: +36.0 P.S.F. & -42.0 P.S.F.
TEST LOADS: +54.0 P.S.F. & -63.0 P.S.F.

Unless Stated Otherwise
TOLERANCES are
.0 = ±.031
.00 = ±.015
.000 = ±.005
.0000 = ±.001
Degrees = ±1/2'
Unless Stated Otherwise
DIMENSIONS ARE IN INCHES.

Glopay
CORPORATION
8585 Duke Boulevard
Mason, OH 45040 USA
Tel. No. 513-770-4800
Fax No. 513-770-4853

DESCRIPTION: 2" STEEL PAN DOORS 18'2" (SEE TABLE FOR MODELS)	DATE: 11/6/12	SCALE: NTS	DWG. SIZE B
DRAWN BY: SH	DATE: 11/8/12	SHEET 1 OF 4	
CHECKED BY: SH			
DWG. NO.: 104761		VER: TDI	

MANUFACTURING PRODUCT CODE PAN-2F153
PART NO.: N/A
WINDLOAD RATING W6 DP36T

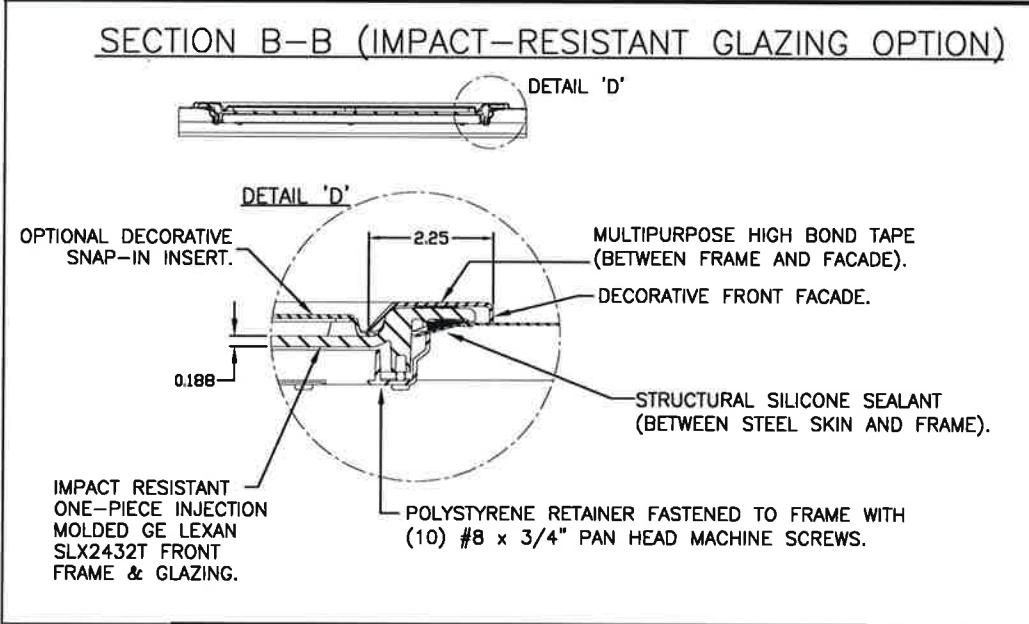
'CLASSIC' RAISED PANEL EMBOSS DOORS			
MODELS	24 GA	25 GA	24 GA
CLOPAY	84A, 94	73, 75	98
IDEAL	4RST	6RST	4F
HOLMES	48, 48B	42, 42B	--
	SHORT PANEL	FLUSH	

'CARRIAGE HOUSE' RAISED PANEL EMBOSS DOORS	
MODELS	25 GA
CLOPAY 'GALLERY'	GD5S, GR5S
HOLMES 'ARTISTRY'	AR5S
IDEAL 'CARRIAGE HOUSE'	ED5S
	SHORT PANEL

SHEET:
2 OF 4

REVISIONS					
REV. NO.	ZONE	DATE	ECN NO.	APPVD:	DESCRIPTION
08	-	-	-	-	SEE REVISION HISTORY ON SHEET ONE.

IMPACT-RESISTANT CONSTRUCTION:
 SOLID DOORS (NO GLAZING) OR DOORS WITH OPTIONAL IMPACT-RESISTANT GLAZING ARE IMPACT-RESISTANT. OPTIONAL INJECTION-MOLDED POLYCARBONATE FRONT FRAME AND GLAZING IS GE LEXAN SLX2432T, AN APPROVED CC2 PLASTIC IN ACCORDANCE WITH IBC/FBC 2606 AND AN APPROVED C1 PLASTIC IN ACCORDANCE WITH FBC 2612. THE ENTIRE DOOR ASSEMBLY INSTALLED IN COMPLIANCE WITH THIS SECTION MEETS THE WIND LOAD REQUIREMENTS OF THE FLORIDA BUILDING CODE AND INTERNATIONAL BUILDING CODE AND IS LARGE- AND SMALL-MISSILE IMPACT RESISTANT.



**IMPACT-RESISTANT ASSEMBLY DETAILS
DRAWING 104761**



Mark Westerfield
7/21/21

DESIGN ENGINEER:
 MARK WESTERFIELD, P.E.
 FLORIDA P.E. #48495, NC P.E. #23832, TEXAS P.E. #91513

DESIGN LOADS: +36.0 P.S.F. & -42.0 P.S.F.
 TEST LOADS: +54.0 P.S.F. & -63.0 P.S.F.

Unless Stated Otherwise
TOLERANCES are
 .0 = ±.031
 .00 = ±.015
 .000 = ±.005
 .0000 = ±.001
 Degrees = ±1/2'
 Unless Stated Otherwise
 DIMENSIONS ARE IN INCHES.

Glopay CORPORATION
 8585 Duke Boulevard
 Mason, OH 45040 USA
 Tel. No. 513-770-4800
 Fax No. 513-770-4853

DESCRIPTION: 2" STEEL PAN DOORS 18'2" (SEE TABLE FOR MODELS)	DATE: 11/6/12	SCALE: NTS	DWG. B
DRAWN BY: SH	DATE: 11/8/12	SHEET 2 OF 4	SIZE B
CHECKED BY: SH			
DWG. NO.: 104761		VER: TDI	

MANUFACTURING PRODUCT CODE
 PAN-2F153

PART NO.: N/A

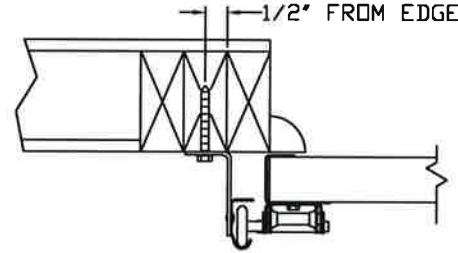
WINDLOAD RATING
 W6 DP36T

'CLASSIC' RAISED PANEL EMBOSS DOORS				'CARRIAGE HOUSE' RAISED PANEL EMBOSS DOORS	
MODELS	24 GA	25 GA	24 GA	MODELS	25 GA
CLOPAY	84A, 94	73, 75	98	CLOPAY 'GALLERY'	GD5S, GR5S
IDEAL	4RST	6RST	4F	HOLMES 'ARTISTRY'	AR5S
HOLMES	48, 48B	42, 42B	--	IDEAL 'CARRIAGE HOUSE'	ED5S
	SHORT PANEL		FLUSH	SHORT PANEL	

SHEET: 3 OF 4						REVISIONS	
REV. NO.	ZONE:	DATE:	ECN NO.	APPVD:	DESCRIPTION		
08	-	-	-	-	SEE REVISION HISTORY ON SHEET ONE.		

IN THE CASE OF GYPSUM WALLBOARD LOCATED AT OR NEAR THE DOOR OPENING LOCATION THERE ARE TWO ACCEPTABLE ALTERNATIVES:

- 1) THE WALLBOARD CAN BE CUT AWAY FROM THE DOOR OPENING AND 2X6 SOUTHERN YELLOW PINE WOOD JAMBS MOUNTED DIRECTLY TO THE SUPPORTING STRUCTURE TO CREATE THE MOUNTING SURFACE. ALTERNATIVELY, THE BRACKETS MAY BE ATTACHED DIRECTLY TO THE SUPPORTING STRUCTURE. SEE DETAIL BELOW. THE CENTER OF SCREW HOLE MUST BE AT LEAST 1/2" FROM BOTH EDGES FOR A 5/16" LAG SCREW.
- 2) IF THE WALLBOARD IS NOT CUT AWAY TO EXPOSE THE UNDERLYING STRUCTURE (WOOD FRAMING MEMBERS), A 2X6 SOUTHERN YELLOW PINE WOOD BUCK OVER SHALL BE INSTALLED THE WALLBOARD FRAMING THE OPENING USING THE JAMB ATTACHMENT FASTENERS LISTED BELOW. HOWEVER, THE JAMB ATTACHMENT FASTENERS MUST BE OF A SUFFICIENT INCREASED LENGTH TO ACCOUNT FOR THE THICKNESS OF THE WALLBOARD TO ENSURE PROPER FASTENER EMBEDMENT INTO THE STRUCTURAL FRAMING MEMBERS OF THE SUPPORTING STRUCTURE.



VERTICAL JAMB ATTACHMENT (WOOD FRAME BUILDINGS):
 3/8"x3" LAG SCREWS ON 19" CENTERS. 1-1/8" MIN. O.D. WASHER REQUIRED. LAG SCREWS MAY BE COUNTERSUNK (BUT NOT REQUIRED) TO PROVIDE A FLUSH MOUNTING SURFACE. HORIZONTAL JAMBS DO NOT TRANSFER LOAD.

VERTICAL JAMB ATTACHMENT (C-90 BLOCK OR 2,000 PSI MIN. CONCRETE COLUMN):
 3/8"x3" SLEEVE ANCHOR BOLTS ON 10" CENTERS (2,000 PSI MIN. CONCRETE). WASHERS INCLUDED WITH SLEEVE ANCHORS.
 OR
 1/4"x3" TAPCON SCREWS ON 8" CENTERS (2,000 PSI MIN. CONCRETE) OR 5" CENTERS (C-90 BLOCK). 1" MIN. O.D. WASHERS REQUIRED WITH TAPCONS.
 ANCHORS MAY BE COUNTERSUNK (BUT NOT REQUIRED) TO PROVIDE A FLUSH MOUNTING SURFACE. HORIZONTAL JAMBS DO NOT TRANSFER LOAD.

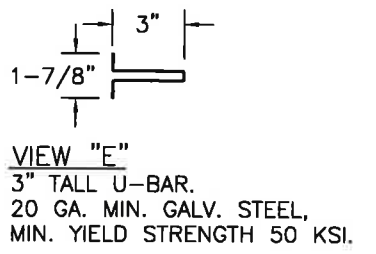
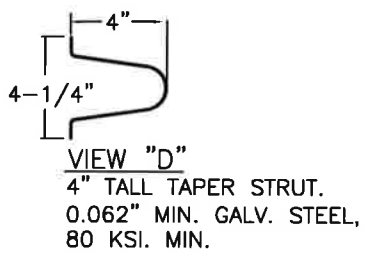
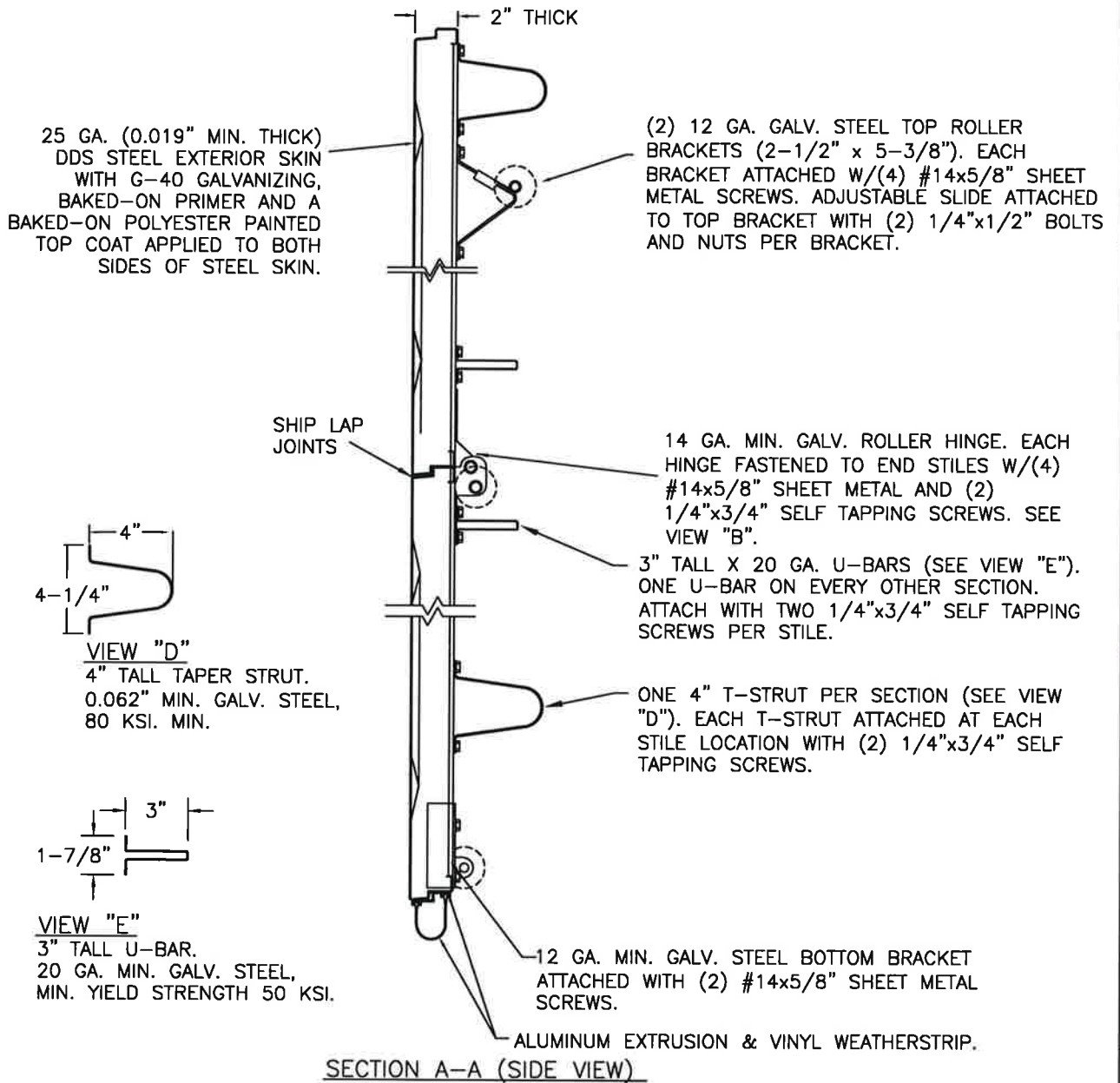
OTHER JAMB CONFIGURATIONS: REFER TO DASMA TDS-161. A LICENSED DESIGN PROFESSIONAL MAY ALSO BE EMPLOYED TO APPROVE ALTERNATE FASTENERS AND/OR JAMB CONFIGURATIONS.

SEE ADDITIONAL DETAILS IN "CONNECTING JAMB TO EXISTING STRUCTURES" JAMB FASTENER ANALYSIS CBPC-JFA-0001 (AVAILABLE ON TDI WEBSITE OR FROM MANUFACTURER).

NOTE: THE DESIGN OF THE SUPPORTING STRUCTURAL ELEMENTS SHALL BE THE RESPONSIBILITY OF THE PROFESSIONAL OF RECORD FOR THE BUILDING OR STRUCTURE AND IN ACCORDANCE WITH CURRENT BUILDING CODES FOR THE LOADS LISTED ON THE DRAWING.



DESIGN ENGINEER:
 MARK WESTERFIELD, P.E.
 FLORIDA P.E. #48495, NC P.E. #23832, TEXAS P.E. #91513



DESIGN LOADS: +36.0 P.S.F. & -42.0 P.S.F.
 TEST LOADS: +54.0 P.S.F. & -63.0 P.S.F.

Unless Stated Otherwise TOLERANCES are

.0	= ±.031
.00	= ±.015
.000	= ±.005
.0000	= ±.001
Degrees	= ±1/2'

Unless Stated Otherwise DIMENSIONS ARE IN INCHES.

Clopay CORPORATION
 8585 Duke Boulevard
 Mason, OH 45040 USA
 Tel. No. 513-770-4800
 Fax No. 513-770-4853

DESCRIPTION: 2" STEEL PAN DOORS 18'2" (SEE TABLE FOR MODELS)		WINDLOAD RATING W6 DP36T	
DRAWN BY: SH	DATE: 11/6/12	SCALE: NTS	DWG. B
CHECKED BY: SH	DATE: 11/8/12	SHEET 3 OF 4	SIZE B
DWG. NO.: 104761		VER: TDI	

MANUFACTURING PRODUCT CODE
PAN-2F153

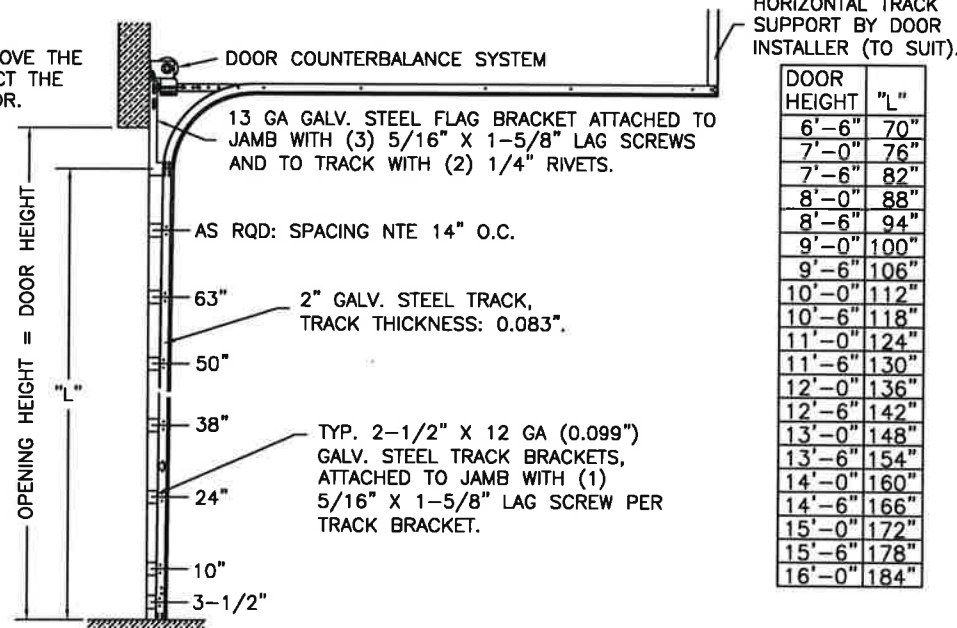
PART NO.: N/A

'CLASSIC' RAISED PANEL EMBOSS DOORS				'CARRIAGE HOUSE' RAISED PANEL EMBOSS DOORS	
MODELS	24 GA	25 GA	24 GA	MODELS	25 GA
CLOPAY	84A, 94	73, 75	98	CLOPAY 'GALLERY'	GD5S, GR5S
IDEAL	4RST	6RST	4F	HOLMES 'ARTISTRY'	AR5S
HOLMES	48, 48B	42, 42B	--	IDEAL 'CARRIAGE HOUSE'	ED5S
	SHORT PANEL		FLUSH	SHORT PANEL	

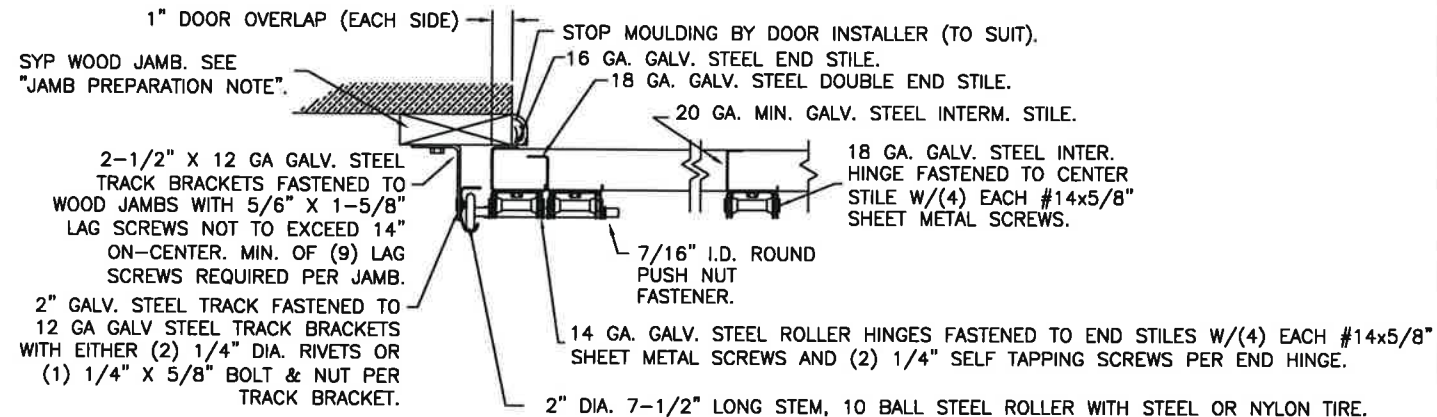
SHEET:		REVISIONS				
REV. NO.	ZONE:	DATE:	ECN NO.	APPVD:	DESCRIPTION	
4 OF 4	08	-	-	-	SEE REVISION HISTORY ON SHEET ONE.	

NOTE: TRACK CONFIGURATION ABOVE THE DOOR OPENING DOES NOT AFFECT THE WIND LOAD RATING OF THIS DOOR.

2" TRACK CONFIGURATION

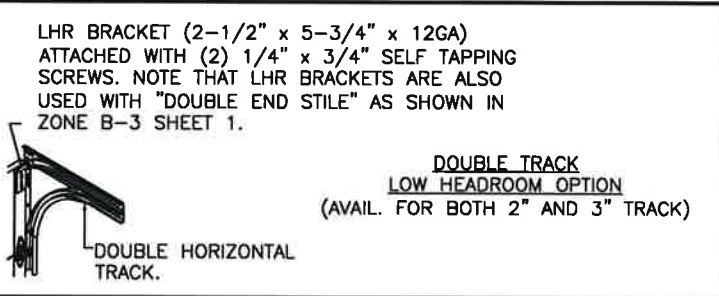


JAMB CONFIGURATION FOR 2" TRACK.



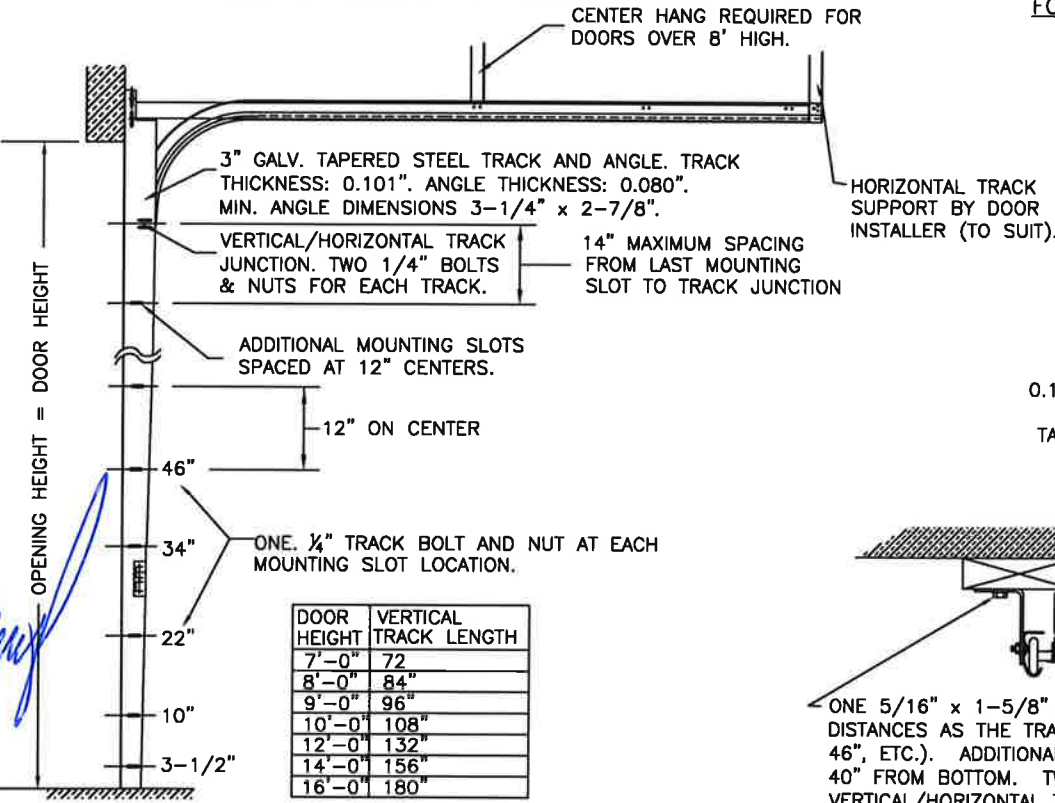
SECTION C-C

PREPARATION OF JAMBS BY OTHERS.

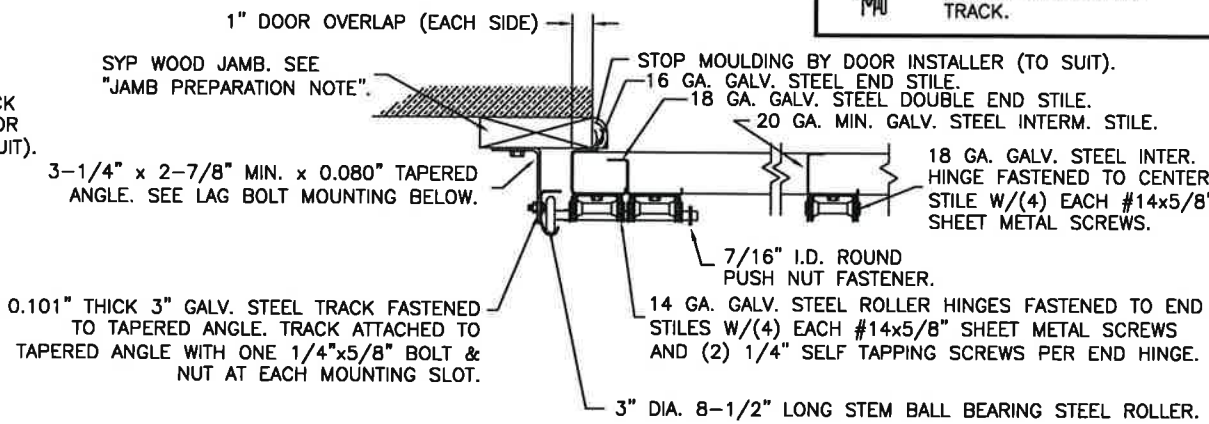


3" TRACK CONFIGURATION

NOTE: TRACK CONFIGURATION ABOVE THE DOOR OPENING DOES NOT AFFECT THE WIND LOAD RATING OF THIS DOOR.



JAMB CONFIGURATION FOR 3" TRACK.



SECTION C-C

PREPARATION OF JAMBS BY OTHERS.

DESIGN LOADS: +36.0 P.S.F. & -42.0 P.S.F.
TEST LOADS: +54.0 P.S.F. & -63.0 P.S.F.

Unless Stated Otherwise TOLERANCES are
.0 = ±.031
.00 = ±.015
.000 = ±.005
.0000 = ±.001
Degrees = ±1/2'
Unless Stated Otherwise DIMENSIONS ARE IN INCHES.

Clopay CORPORATION
8585 Duke Boulevard
Mason, OH 45040 USA
Tel. No. 513-770-4800
Fax No. 513-770-4853

MANUFACTURING PRODUCT CODE	PAN-2F153
PART NO.:	N/A
WINDLOAD RATING	W6 DP36T
DESCRIPTION:	2" STEEL PAN DOORS 18'2" (SEE TABLE FOR MODELS)
DRAWN BY: SH	DATE: 11/6/12
CHECKED BY: SH	DATE: 11/8/12
DWG. NO.: 104761	SCALE: NTS
VER: TD!	SHEET 4 OF 4
	DWG. SIZE B



DESIGN ENGINEER:
MARK WESTERFIELD, P.E.
FLORIDA P.E. #48495, NC P.E. #23832, TEXAS P.E. #91513

Mark Westerfield
7/21/21