

'CLASSIC' RAISED PANEL EMBOSS DOORS	
MODELS	24 GA
CLOPAY	84A, 94
IDEAL	4RST, 4F*
HOLMES	48, 48B

* - MODEL 4F IS FLUSH

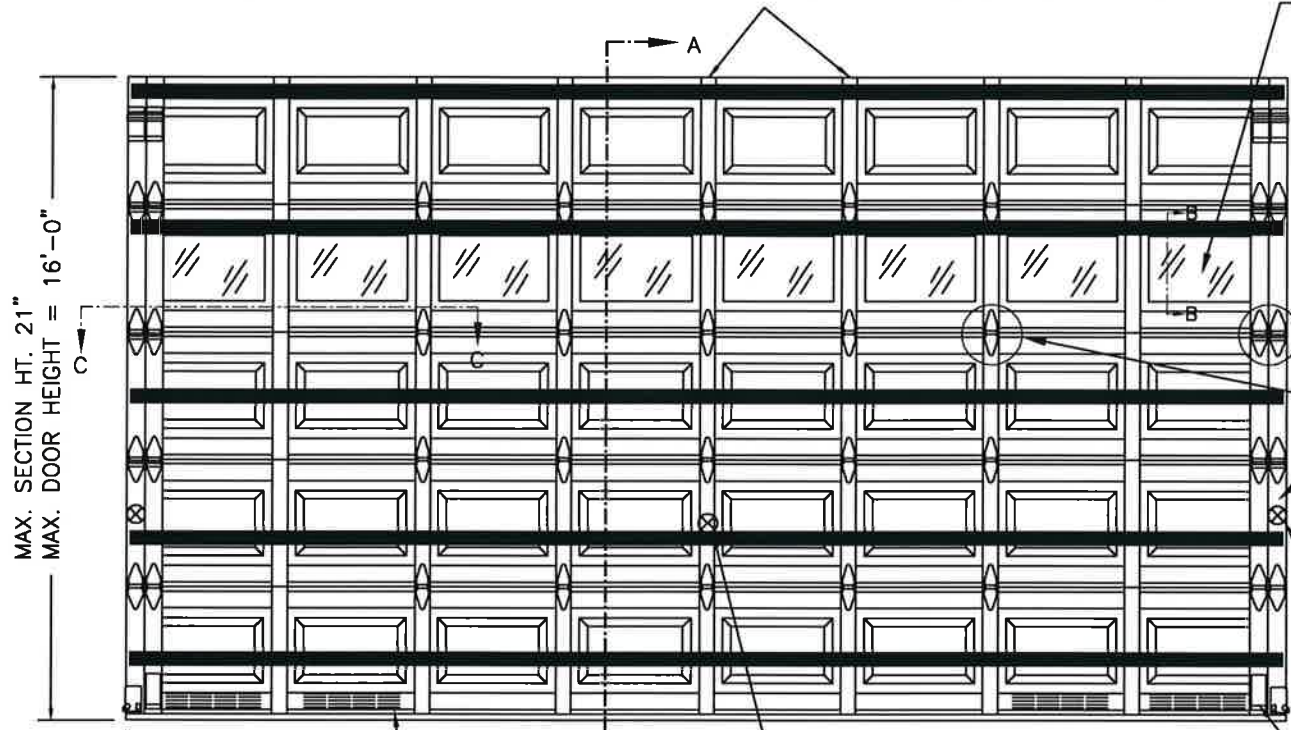
SHEET
1 OF 4

REVISIONS					DESCRIPTION
REV. NO.	ZONE:	DATE:	ECN NO.	APPVD:	
05	-	07/2021	-	JDW	UPDATED TITLE BLOCK AND ADDED COMPLIANCE STATEMENT.

THIS PRODUCT COMPLIES WITH THE 2018 IBC/IRC.

ONE INTERMEDIATE STILE BETWEEN EACH EMBOSS LOCATION. ATTACHED W/ TOG-L-LOC (TOP & BTM) AND URETHANE ADHESIVE (ALONG CENTER).

OPTIONAL ROW OF IMPACT-RESISTANT GLAZING. MAX. GLAZING SIZE IS 18-1/2" x 11". GLAZING IS INJECTION MOLDED GE LEXAN SLX2432T, AN APPROVED CC2 PLASTIC IN ACCORDANCE WITH IBC/FBC 2606. SEE SECTION B-B FOR ASSEMBLY DETAILS. (GLAZING SHOWN IN INTERMEDIATE SECTION.)



MAX. SECTION HT. 21"
MAX. DOOR HEIGHT = 16'-0"

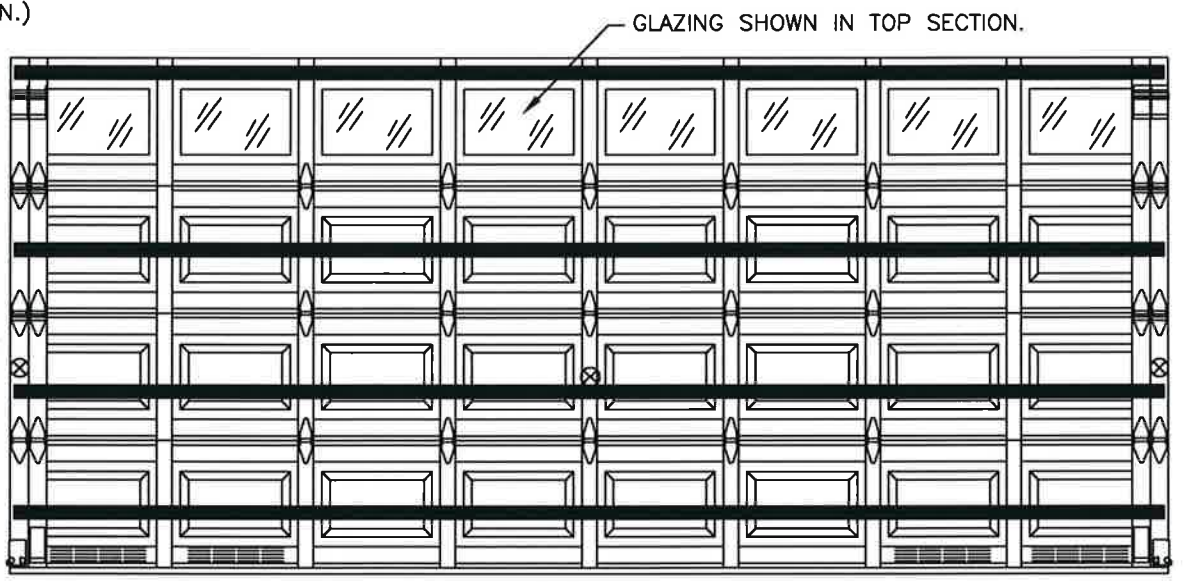
VIEW "B" (SEE SHEET TWO).

VIEW "C" (SEE SHEET TWO).

16 GA. END STILES ATTACHED TO DOOR SKIN WITH PATENTED TOG-L-LOC SYSTEM (TOP, BOTTOM & CENTER). ATTACHED TO TOP AND BOTTOM RAIL WITH PATENTED TOG-L-LOC SYSTEM.

TWO POINT LOCKING INTO TRACK.

(2) LHR TOP BRACKETS USED AS INNER BOTTOM BRACKET.
(1) 3-IN ROLLER CARRIER (P/N 0120394) USED WITH 3" TRACK.



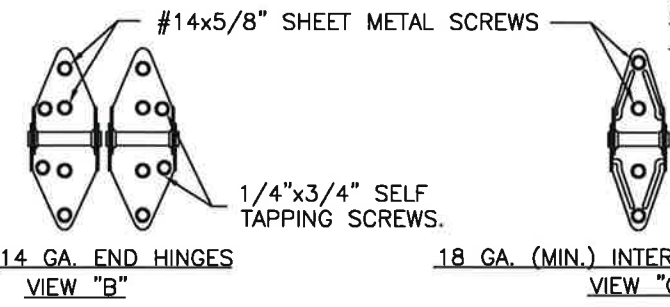
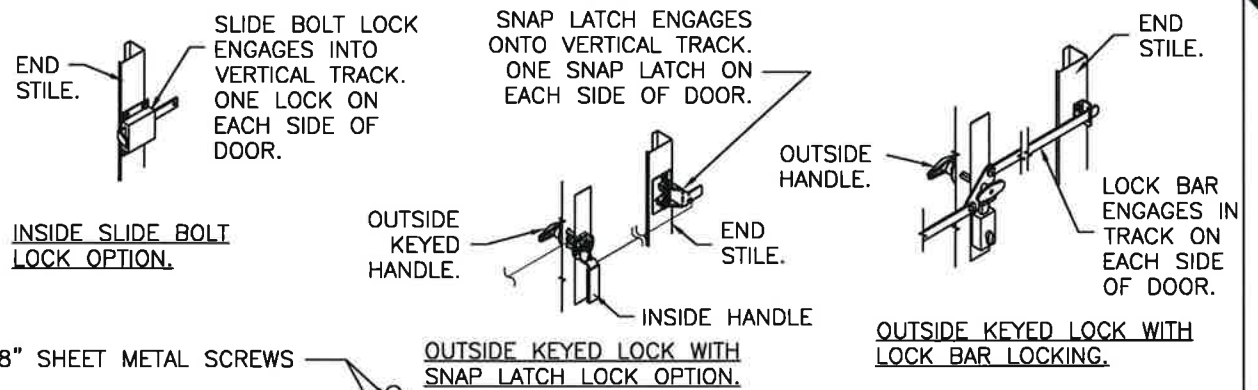
GLAZING SHOWN IN TOP SECTION.

LOCATION OF OPTIONAL VENTS. TOTAL VENT OPENINGS: 60 IN² PER VEHICLE.

DOOR HEIGHT	# OF SECTIONS
UP TO 7'0"	4
7'3" TO 8'9"	5
9'0" TO 10'6"	6
10'9" TO 12'3"	7
12'6" TO 14'0"	8
14'3" TO 15'9"	9
16'0"	10

MAX SECTION HEIGHT: 21'

'CLASSIC' RAISED PANEL EMBOSS DOORS		
DOOR WIDTH	# OF INTERM. STILES	# OF INTERM. HINGES
9'2" TO 9'10"	3	3
10'0" TO 11'10"	4	4
12'0" TO 13'10"	5	3
14'0" TO 15'10"	6	4
16'0" TO 16'2"	7	5



DESIGN LOADS: +46.0 P.S.F. & -50.0 P.S.F.
TEST LOADS: +69.0 P.S.F. & -78.0 P.S.F.

Unless Stated Otherwise TOLERANCES are
.0 = ±.031
.00 = ±.015
.000 = ±.005
.0000 = ±.001
Degrees = ±1/2"

Unless Stated Otherwise DIMENSIONS ARE IN INCHES.

Clopay CORPORATION
8585 Duke Boulevard
Mason, OH 45040 USA
Tel. No. 513-770-4800
Fax No. 513-770-4853

MANUFACTURING PRODUCT CODE
PAN-2F143

PART NO.: N/A

WINDLOAD RATING
W8 DP46

DESCRIPTION: 2" STEEL PAN DOORS 16'2"W (SEE TABLE FOR MODELS)

DRAWN BY: S.H.	DATE: 11/19/12	SCALE: NTS	DWG. SIZE B
CHECKED BY: S.H.	DATE: 11/20/12	SHEET 1 OF 4	
DWG. NO.: 104754	VER: IBC		

STATE OF TEXAS
MARK WESTERFIELD
91513
LICENSED PROFESSIONAL ENGINEER
7/21/21

DESIGN ENGINEER:
MARK WESTERFIELD, P.E.
FLORIDA P.E. #48495, NC P.E. #23832, TEXAS P.E. #91513

'CLASSIC' RAISED PANEL EMBOSS DOORS	
MODELS	24 GA
CLOPAY	84A, 94
IDEAL	4RST, 4F*
HOLMES	48, 48B

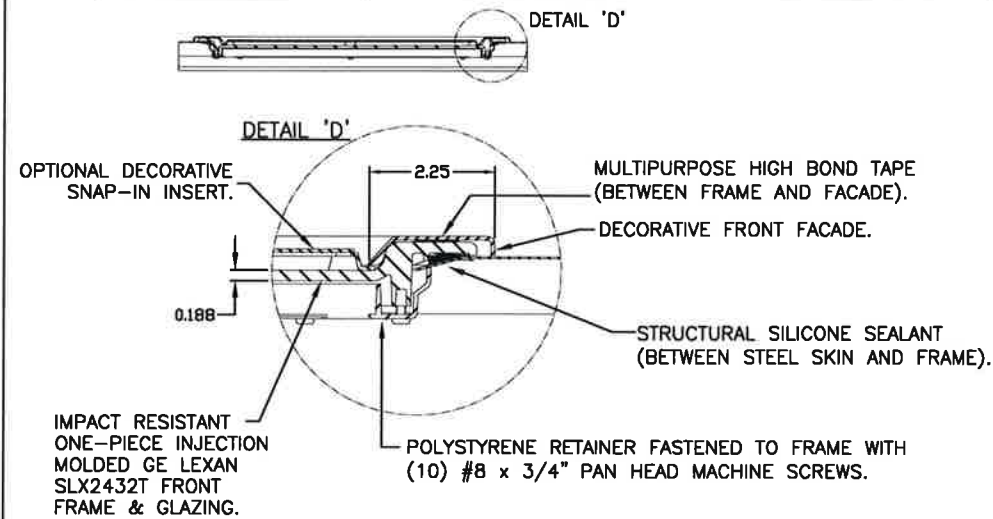
* - MODEL 4F IS FLUSH

SHEET:
2 OF 4

REVISIONS					
REV. NO.	ZONE:	DATE:	ECN NO.	APPVD:	DESCRIPTION
05	-	-	-	-	SEE REVISION HISTORY ON SHEET ONE.

IMPACT-RESISTANT CONSTRUCTION:
 SOLID DOORS (NO GLAZING) OR DOORS WITH OPTIONAL IMPACT-RESISTANT GLAZING ARE IMPACT-RESISTANT. OPTIONAL INJECTION-MOLDED POLYCARBONATE FRONT FRAME AND GLAZING IS GE LEXAN SLX2432T, AN APPROVED CC2 PLASTIC IN ACCORDANCE WITH IBC/FBC 2606 AND AN APPROVED C1 PLASTIC IN ACCORDANCE WITH FBC 2612. THE ENTIRE DOOR ASSEMBLY INSTALLED IN COMPLIANCE WITH THIS SECTION MEETS THE WIND LOAD REQUIREMENTS OF THE FLORIDA BUILDING CODE AND INTERNATIONAL BUILDING CODE AND IS LARGE- AND SMALL-MISSILE IMPACT RESISTANT.

SECTION B-B (IMPACT-RESISTANT GLAZING OPTION)



**IMPACT-RESISTANT ASSEMBLY DETAILS
DRAWING 104754**



Mark Westerfield
7/21/21

DESIGN ENGINEER:
 MARK WESTERFIELD, P.E.
 FLORIDA P.E. #48495, NC P.E. #23832, TEXAS P.E. #91513

DESIGN LOADS: +46.0 P.S.F. & -50.0 P.S.F.
 TEST LOADS: +69.0 P.S.F. & -78.0 P.S.F.

Unless Stated Otherwise
 TOLERANCES are

.0	= ±.031
.00	= ±.015
.000	= ±.005
.0000	= ±.001
Degrees	= ±1/2'

Unless Stated Otherwise
 DIMENSIONS ARE IN INCHES.

Clopay CORPORATION
 8585 Duke Boulevard
 Mason, OH 45040 USA
 Tel. No. 513-770-4800
 Fax No. 513-770-4853

DESCRIPTION: 2" STEEL PAN DOORS 16'2"W (SEE TABLE FOR MODELS)	SCALE: NTS	DWG. B
DRAWN BY: S.H.	DATE: 11/19/12	SHEET 2 OF 4
CHECKED BY: S.H.	DATE: 11/20/12	SIZE B
DWG. NO.: 104754	VER: IBC	

MANUFACTURING PRODUCT CODE
 PAN-2F143

PART NO.: N/A

WINDLOAD RATING
 W8 DP46

'CLASSIC' RAISED PANEL EMBOSS DOORS	
MODELS	24 GA
CLOPAY	84A, 94
IDEAL	4RST, 4F*
HOLMES	4B, 4B3

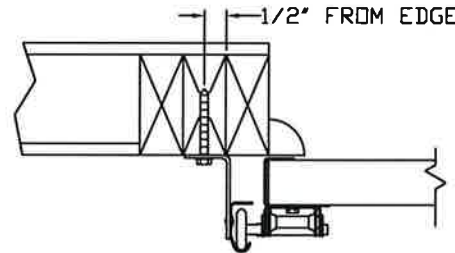
* - MODEL 4F IS FLUSH

SHEET
3 OF 4

REVISIONS					
REV. NO.	ZONE	DATE	ECN NO.	APPVD:	DESCRIPTION
05	-	-	-	-	SEE REVISION HISTORY ON SHEET ONE.

IN THE CASE OF GYPSUM WALLBOARD LOCATED AT OR NEAR THE DOOR OPENING LOCATION THERE ARE TWO ACCEPTABLE ALTERNATIVES:

- 1) THE WALLBOARD CAN BE CUT AWAY FROM THE DOOR OPENING AND 2X6 SOUTHERN YELLOW PINE WOOD JAMBS MOUNTED DIRECTLY TO THE SUPPORTING STRUCTURE TO CREATE THE MOUNTING SURFACE. ALTERNATIVELY, THE BRACKETS MAY BE ATTACHED DIRECTLY TO THE SUPPORTING STRUCTURE. SEE DETAIL BELOW. THE CENTER OF SCREW HOLE MUST BE AT LEAST 1/2" FROM BOTH EDGES FOR A 5/16" LAG SCREW.
- 2) IF THE WALLBOARD IS NOT CUT AWAY TO EXPOSE THE UNDERLYING STRUCTURE (WOOD FRAMING MEMBERS), A 2X6 SOUTHERN YELLOW PINE WOOD BUCK OVER SHALL BE INSTALLED THE WALLBOARD FRAMING THE OPENING USING THE JAMB ATTACHMENT FASTENERS LISTED BELOW. HOWEVER, THE JAMB ATTACHMENT FASTENERS MUST BE OF A SUFFICIENT INCREASED LENGTH TO ACCOUNT FOR THE THICKNESS OF THE WALLBOARD TO ENSURE PROPER FASTENER EMBEDMENT INTO THE STRUCTURAL FRAMING MEMBERS OF THE SUPPORTING STRUCTURE.



VERTICAL JAMB ATTACHMENT (WOOD FRAME BUILDINGS):

3/8"x3" LAG SCREWS ON 19" CENTERS. 1-1/8" MIN. O.D. WASHER REQUIRED. LAG SCREWS MAY BE COUNTERSUNK (BUT NOT REQUIRED) TO PROVIDE A FLUSH MOUNTING SURFACE. HORIZONTAL JAMBS DO NOT TRANSFER LOAD.

VERTICAL JAMB ATTACHMENT (C-90 BLOCK OR 2,000 PSI MIN. CONCRETE COLUMN):

3/8"x3" SLEEVE ANCHOR BOLTS ON 11" CENTERS (2,000 PSI MIN. CONCRETE). WASHERS INCLUDED WITH SLEEVE ANCHORS.

OR
1/4"x3" TAPCON SCREWS ON 8" CENTERS (2,000 PSI MIN. CONCRETE) OR 5" CENTERS (C-90 BLOCK). 1" MIN. O.D. WASHERS REQUIRED WITH TAPCONS.

ANCHORS MAY BE COUNTERSUNK (BUT NOT REQUIRED) TO PROVIDE A FLUSH MOUNTING SURFACE. HORIZONTAL JAMBS DO NOT TRANSFER LOAD.

OTHER JAMB CONFIGURATIONS: REFER TO DASMA TDS-161. A LICENSED DESIGN PROFESSIONAL MAY ALSO BE EMPLOYED TO APPROVE ALTERNATE FASTENERS AND/OR JAMB CONFIGURATIONS.

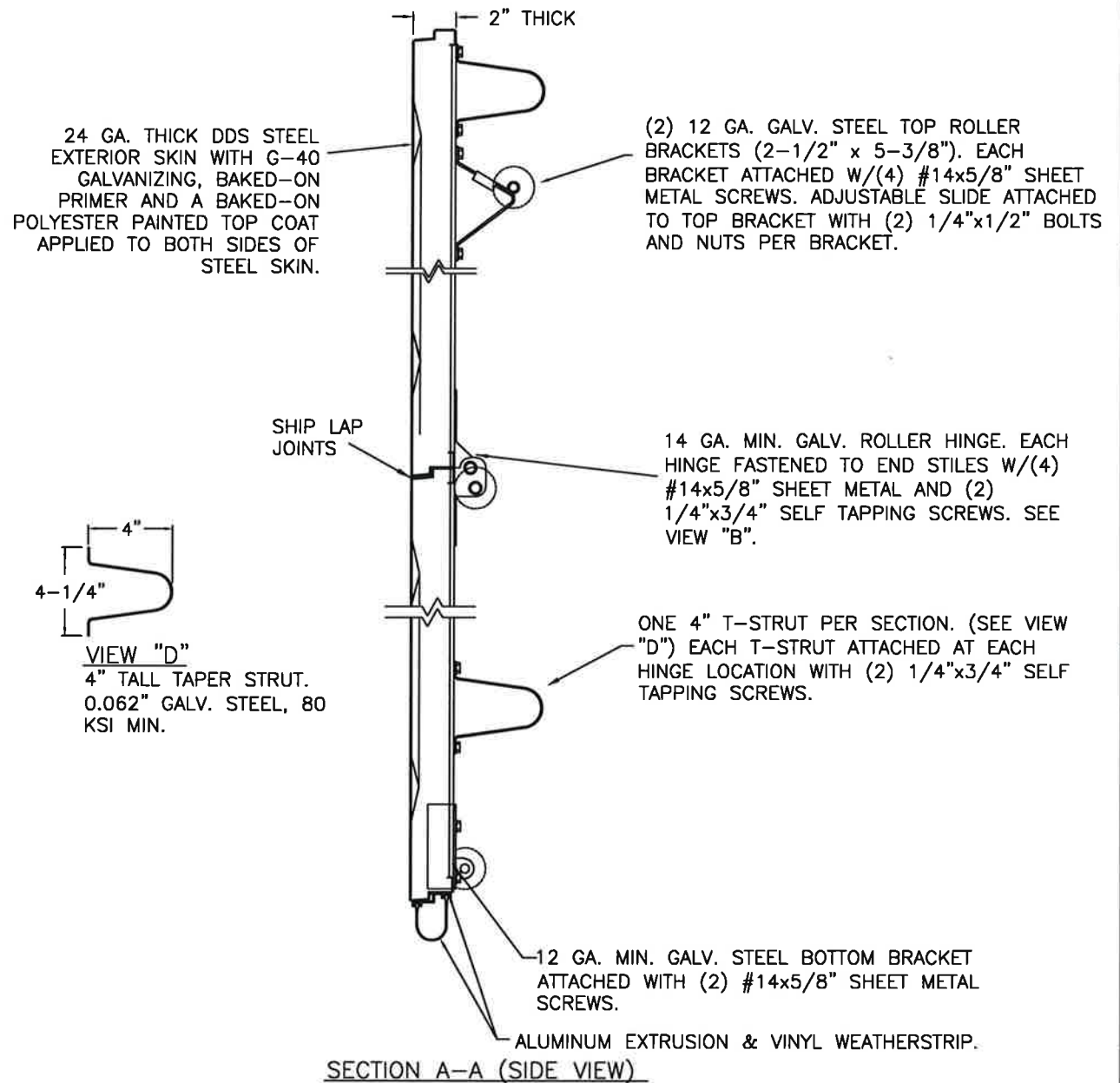
SEE ADDITIONAL DETAILS IN "CONNECTING JAMB TO EXISTING STRUCTURES" JAMB FASTENER ANALYSIS CBPC-JFA-0001 (AVAILABLE ON TDI WEBSITE OR FROM MANUFACTURER).

NOTE: THE DESIGN OF THE SUPPORTING STRUCTURAL ELEMENTS SHALL BE THE RESPONSIBILITY OF THE PROFESSIONAL OF RECORD FOR THE BUILDING OR STRUCTURE AND IN ACCORDANCE WITH CURRENT BUILDING CODES FOR THE LOADS LISTED ON THE DRAWING.



Mark Westerfield
7/21/21

DESIGN ENGINEER:
MARK WESTERFIELD, P.E.
FLORIDA P.E. #48495, NC P.E. #23832, TEXAS P.E. #91513



SECTION A-A (SIDE VIEW)

DESIGN LOADS: +46.0 P.S.F. & -50.0 P.S.F.
TEST LOADS: +69.0 P.S.F. & -78.0 P.S.F.

Unless Stated Otherwise TOLERANCES are

.0	= ±.031
.00	= ±.015
.000	= ±.005
.0000	= ±.001
Degrees	= ±1/2'

Unless Stated Otherwise DIMENSIONS ARE IN INCHES.

Clopay CORPORATION
8585 Duke Boulevard
Mason, OH 45040 USA
Tel. No. 513-770-4800
Fax No. 513-770-4853

DESCRIPTION: 2" STEEL PAN DOORS 16'2"W (SEE TABLE FOR MODELS)	DATE: 11/19/12	SCALE: NTS	DWG. SIZE B
DRAWN BY: S.H.	DATE: 11/20/12	SHEET 3 OF 4	
CHECKED BY: S.H.			
DWG. NO.: 104754			VER: IBC

MANUFACTURING PRODUCT CODE
PAN-2F143

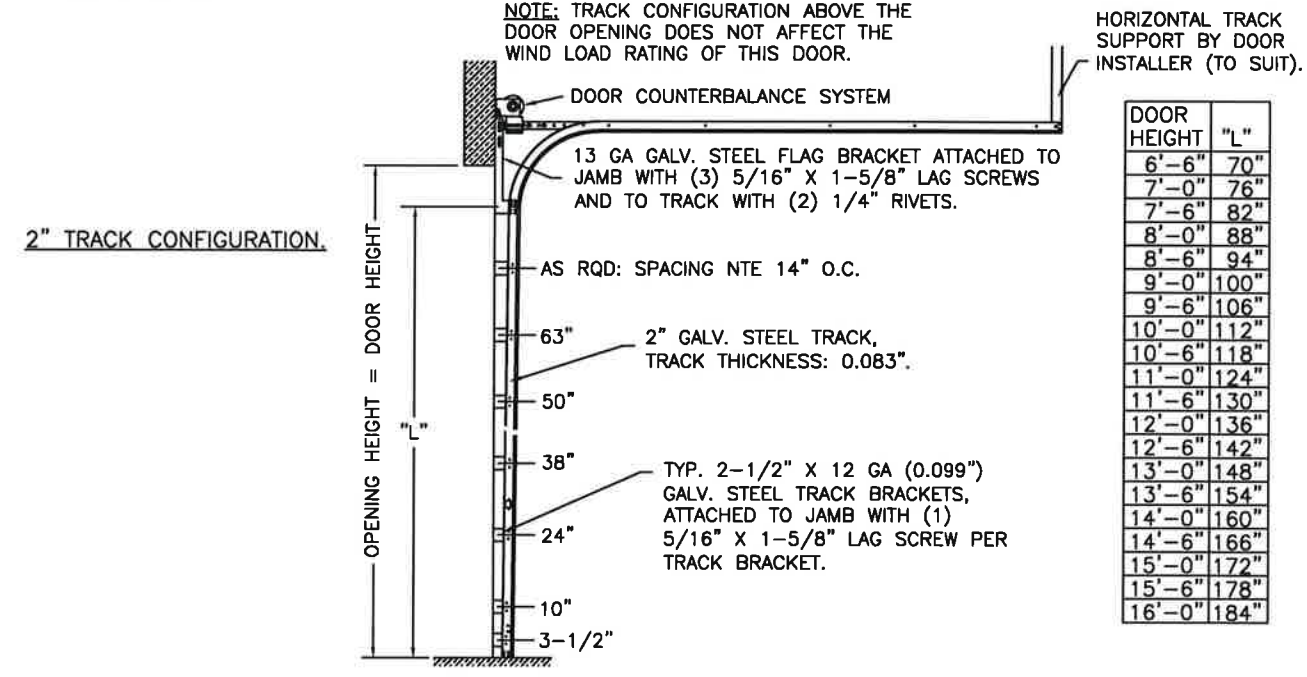
PART NO.: N/A

WINDLOAD RATING
W8 DP46

'CLASSIC' RAISED PANEL EMBOSS DOORS	
MODELS	24 GA
CLOPAY	84A, 94
IDEAL	4RST, 4F*
HOLMES	4B, 48B

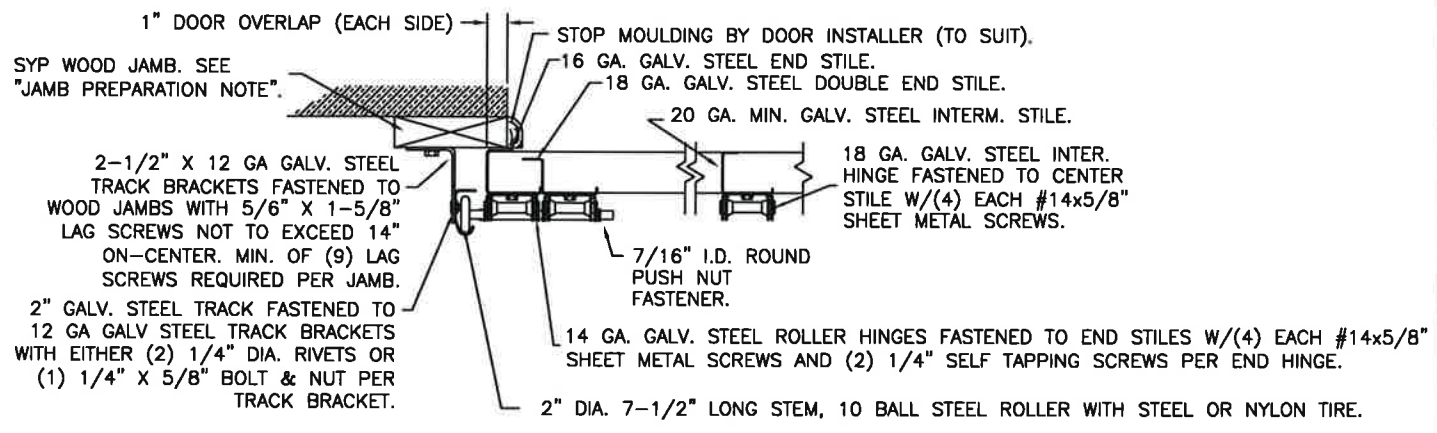
* - MODEL 4F IS FLUSH

SHEET:	REVISONS					
4 OF 4	REV. NO.	ZONE:	DATE:	ECN NO.	APPVD:	DESCRIPTION
	05	-	-	-	-	SEE REVISION HISTORY ON SHEET ONE.

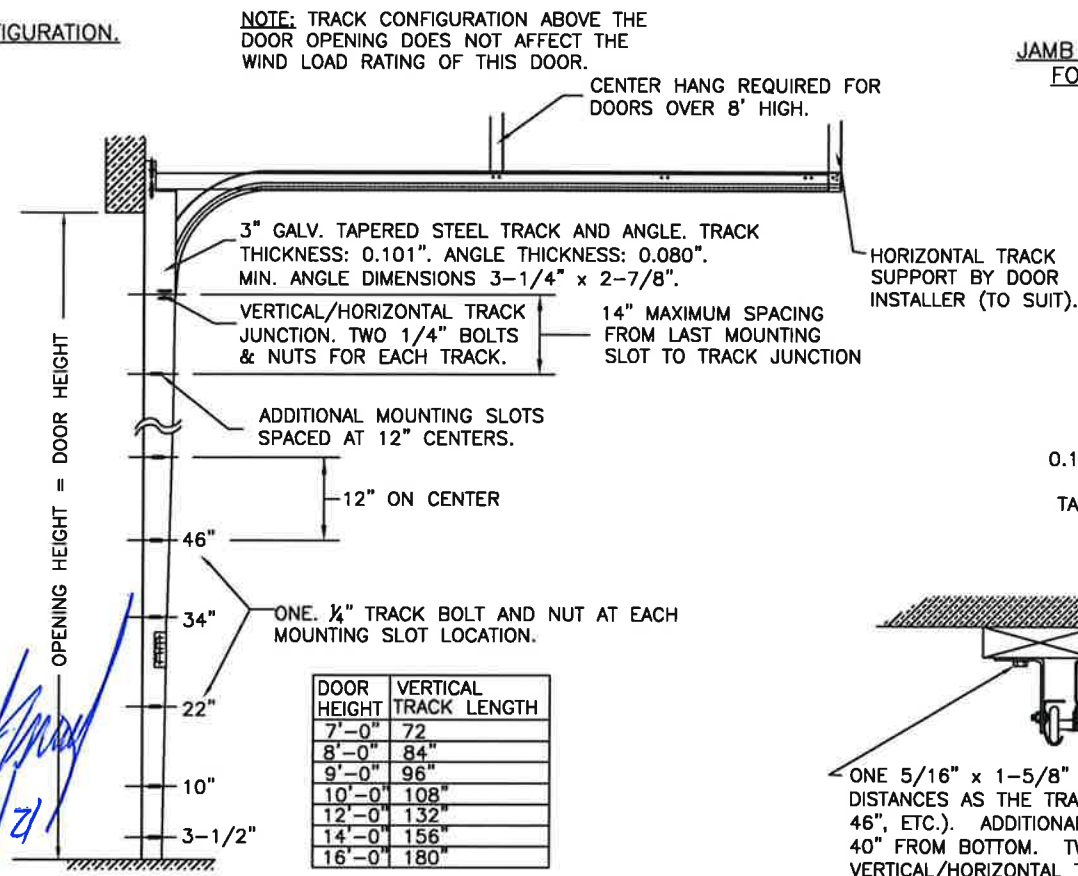


DOOR HEIGHT	"L"
6'-6"	70"
7'-0"	76"
7'-6"	82"
8'-0"	88"
8'-6"	94"
9'-0"	100"
9'-6"	106"
10'-0"	112"
10'-6"	118"
11'-0"	124"
11'-6"	130"
12'-0"	136"
12'-6"	142"
13'-0"	148"
13'-6"	154"
14'-0"	160"
14'-6"	166"
15'-0"	172"
15'-6"	178"
16'-0"	184"

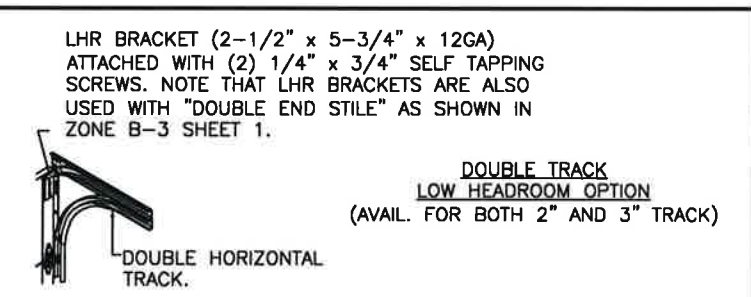
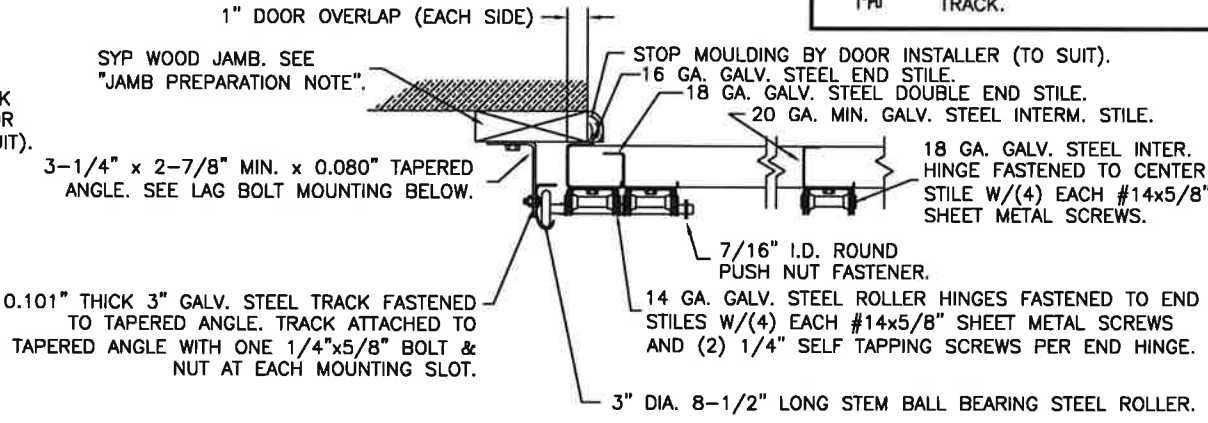
JAMB CONFIGURATION FOR 2" TRACK.



3" TRACK CONFIGURATION.



JAMB CONFIGURATION FOR 3" TRACK.



DESIGN ENGINEER
 MARK WESTERFIELD, P.E.
 FLORIDA P.E. #48495, NC P.E. #23832, TEXAS P.E. #91513

DOOR HEIGHT	VERTICAL TRACK LENGTH
7'-0"	72"
8'-0"	84"
9'-0"	96"
10'-0"	108"
12'-0"	132"
14'-0"	156"
16'-0"	180"

DESIGN LOADS: +46.0 P.S.F. & -50.0 P.S.F.
 TEST LOADS: +69.0 P.S.F. & -78.0 P.S.F.

Unless Stated Otherwise TOLERANCES are
 .0 = ±.031
 .00 = ±.015
 .000 = ±.005
 .0000 = ±.001
 Degrees = ±1/2'
 Unless Stated Otherwise DIMENSIONS ARE IN INCHES.

Clopay CORPORATION
 8585 Duke Boulevard
 Mason, OH 45040 USA
 Tel. No. 513-770-4800
 Fax No. 513-770-4853

MANUFACTURING PRODUCT CODE	PAN-2F143
PART NO.:	N/A
WINDLOAD RATING	W8 DP46
DESCRIPTION:	2" STEEL PAN DOORS 16'2"W (SEE TABLE FOR MODELS)
DRAWN BY:	S.H.
DATE:	11/19/12
SCALE:	NTS
DWG. SIZE	B
CHECKED BY:	S.H.
DATE:	11/20/12
SHEET	4 OF 4
VER:	TDI
DWG. NO.:	104754