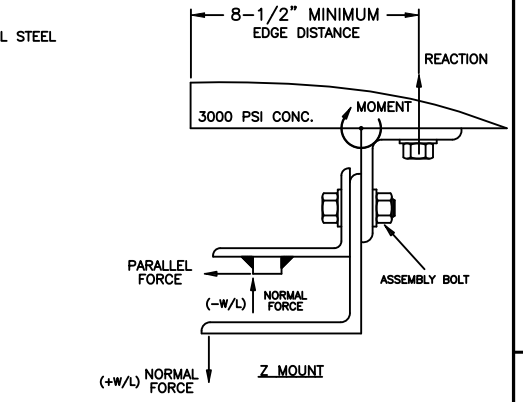
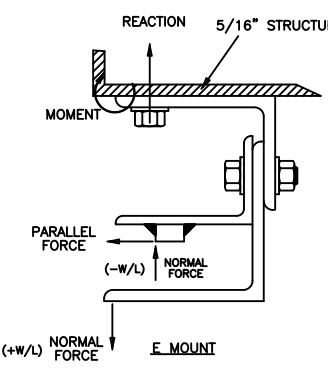
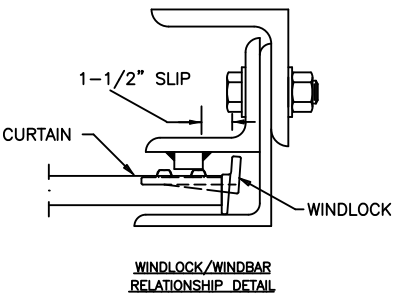
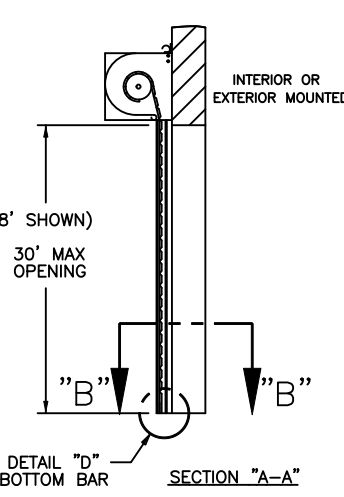
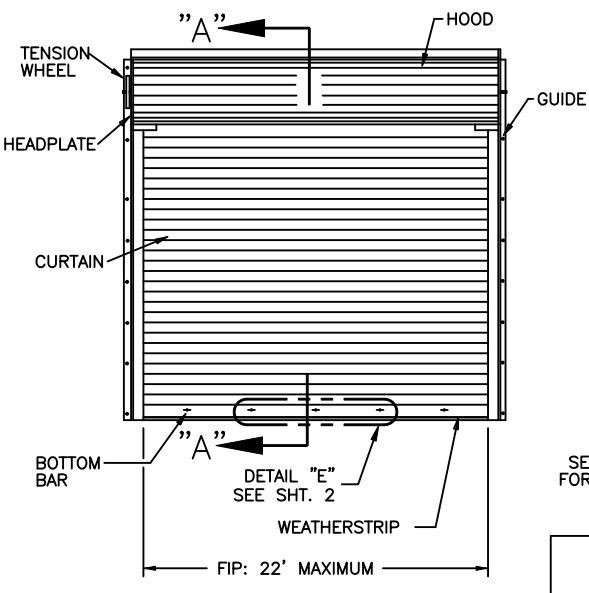


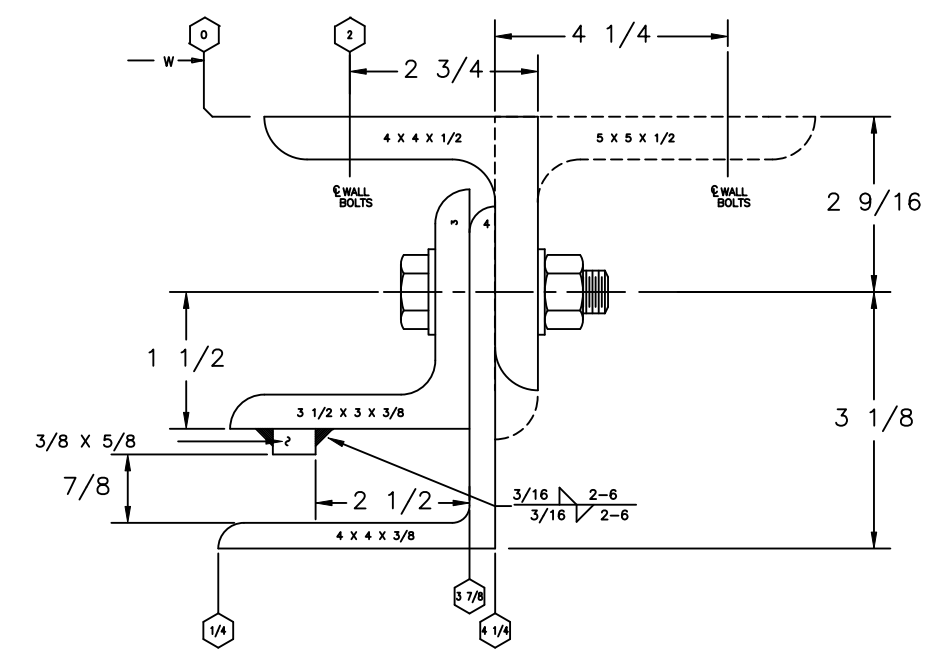
- NOTES
- (-W/L) = NEGATIVE WINDLOAD
(+W/L) = POSITIVE WINDLOAD
 - WALL ANGLES MAY BE WELDED TO STEEL JAMB. SEE SHEET 2 FOR WELDING DETAILS.
 - RATED DESIGN LOAD ±65 PSF. FOR 50 FT/SEC LARGE MISSILE IMPACT SPEED RATING, USE 22 GAUGE MIN FRONT SLAT. FOR 80FT/SEC IMPACT SPEED RATING, USE 20 GA MIN FRONT SLAT.
 - CURTAIN MATERIAL: ASTM A-653 CS TYPE B.
GUIDE MATERIAL: ASTM A-36
 - ALTERNATE CURTAIN MATERIAL: AISI-304 SS. MINIMUM YIELD 40,000 PSI.
 - CURTAIN MATERIAL SHALL BE GALVANIZED ACCORDING TO ASTM A-525 TO G40 MINIMUM.
 - THE DOOR MAY BE INTERIOR OR EXTERIOR FACING.
 - PINS MUST BE ENGAGED AND CHAIN MUST BE HOOKED WHEN HURRICANE WINDS ARE ANNOUNCED.
 - WIND LOCKS ARE REQUIRED ON EACH SLAT
 - WINDLOCK MATERIAL: LOW CARBON CAST STEEL, GRADE 70-46 (485-250) PER ASTM A27. MIN TENSILE 70-KSI MIN YIELD 36-KSI. MIN ELONG 22%
 - WINDLOCKS ATTACHED TO EACH SLAT (CONTINUOUS)
 - RIVET SPECIFICATION:
1/4" DIAMETER RIVET, MINIMUM 1006 LOW-CARBON STEEL.
 - COMPLIES WITH IBC/IRC 2018.

REVISIONS				
REV	DESCRIPTION	DATE	APPROVAL	
502140	H REV PER ER	5/3/13	MS	
32428	J REV PER PCR	7/22/20	RO	
32787	K REV PER PCR	5/31/22	DG	



F-265 - DOOR SIZE REF. SUMMARY

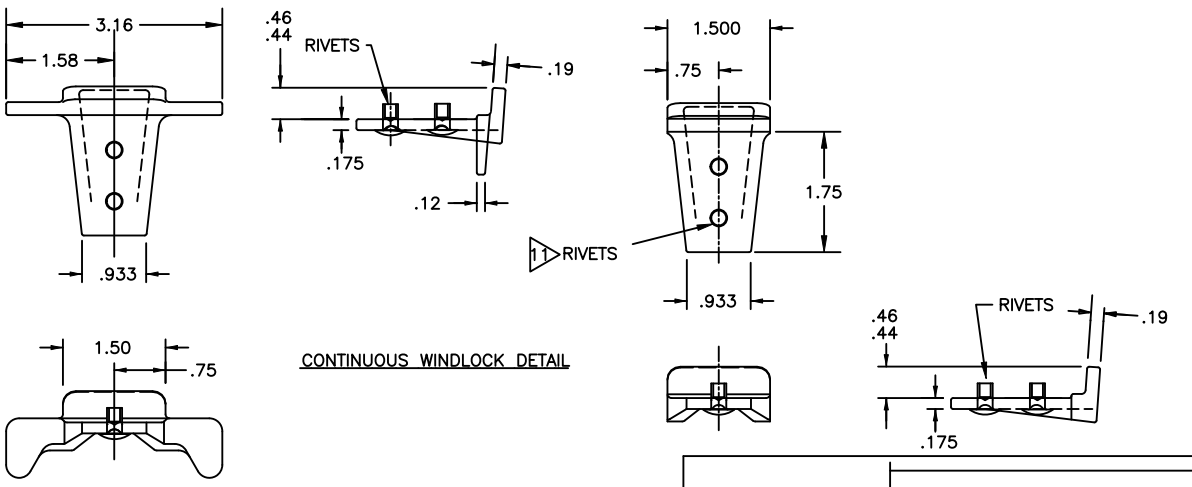
PER FT DOOR HEIGHT	(E-MOUNT) LOADS *			(Z-MOUNT) LOADS *		
	22 GA **	20 GA	18 GA	22 GA **	20 GA	18 GA
REACTION (LBS)	8464	8332	8107	3078	3039	2973
NORMAL (LBS)	715	715	715	715	715	715
PARALLEL (LBS)	2384	2347	2284	2384	2347	2284
MOMENT (INLBS)	13440	13275	12994	13083	12917	12636



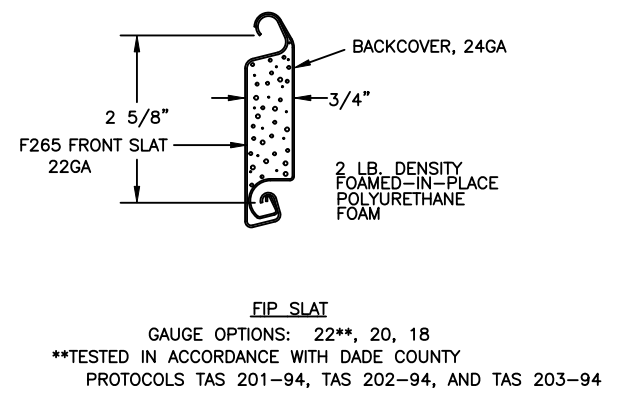
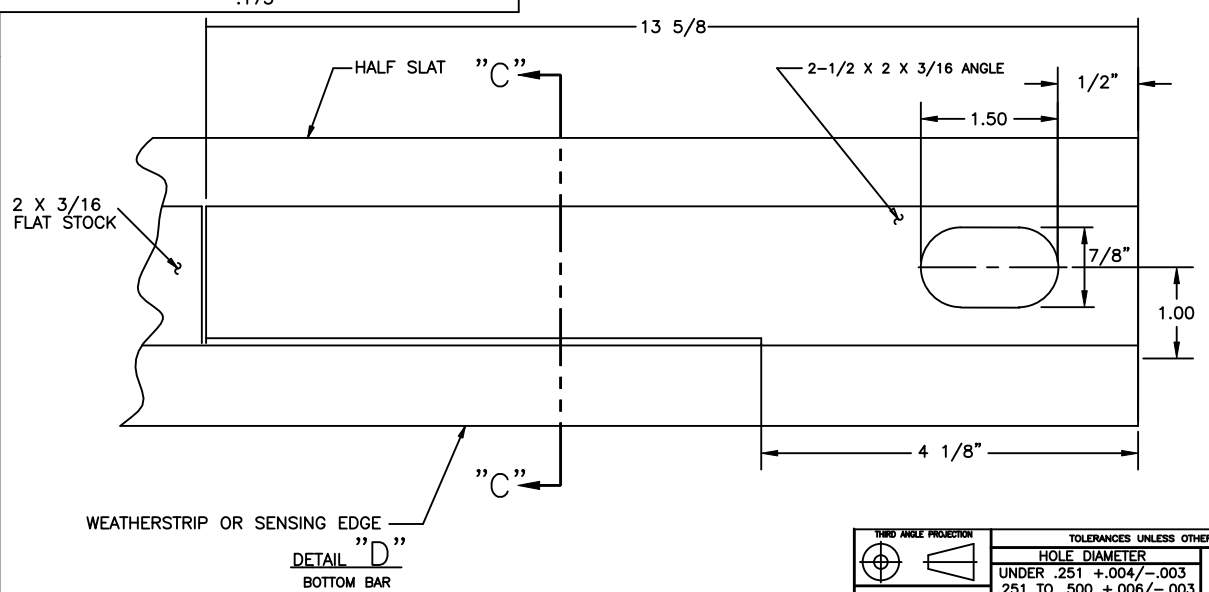
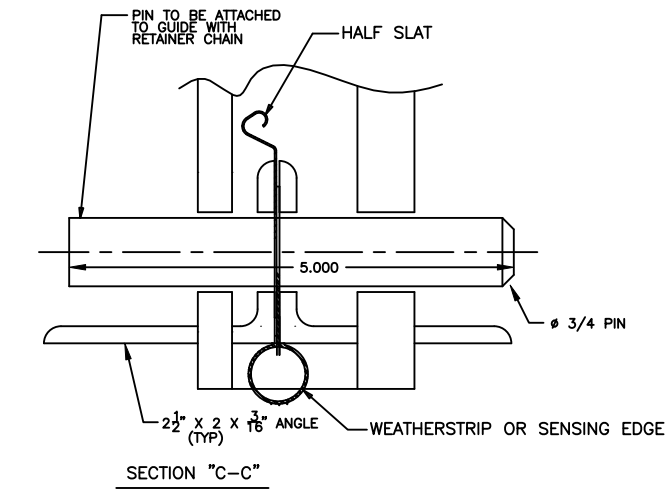
	ASSEMBLY BOLT	WALL BOLT STEEL JAMB	WALL BOLT *CONCRETE JAMB
FIP	5/8" GR 5, 10" O.C.	5/8" GR 5, 12" O.C.	5/8", 5 1/2" EFF. EMBED HILTI KBT22 OR EQUIVALENT 9" O.C.

*3000 PSI MINIMUM & 8-1/2" MINIMUM EDGE DISTANCE FOR ANCHORS. MINIMUM 12" CONCRETE THICKNESS

NOTE: FOR DETAILS ON WELDING GUIDES TO STEEL JAMBS SEE SHEET 2.



PIN MUST BE ENGAGED FOR DOOR TO WITHSTAND DESIGN LOADS



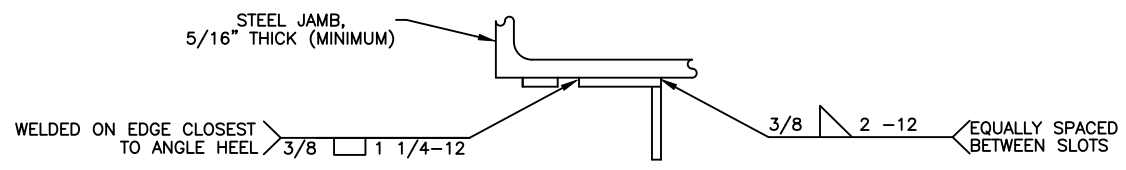
SERIES 626 IS EQUIVALENT CONSTRUCTION

JOHN E. SCATES, PE
2560 KING ARTHUR BLVD, STE 124-54
LEWISVILLE, TX 75056
FL PE 51737 / TX PE 56308/F-2203

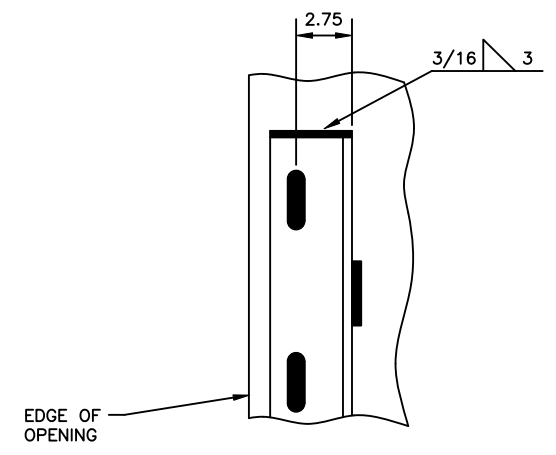
TOLERANCES UNLESS OTHERWISE SPECIFIED		FINISH		The Genuine. The Original.		DRAWING TITLE:	
HOLE DIAMETER		5		LEWISVILLE, TEXAS		SERIES 625, ROLLING SERVICE DOOR 22 FT. DADE COUNTY	
UNDER .251 +.004/- .003		UNIT OF MEASURE		DRAWN BY: G FINERAN		DATE: 8/8/03	
.251 TO .500 +.006/- .003		N/A		CHECKED BY: JD FAW		DATE: 9/5/03	
OVER .500 +.008/- .003		FRACTIONS		APPROVED BY: L KRUPKE		DATE: 9/5/03	
FRACTIONS ± 1/16		ANGLES: ± .5°		DRAWING NUMBER: D-308134		SCALE: NONE	
THIRD ANGLE PROJECTION				SHEET 1 OF 2			

8 | 7 | 6 | 5 | 4 | 3 | 2 | 1

NOTES

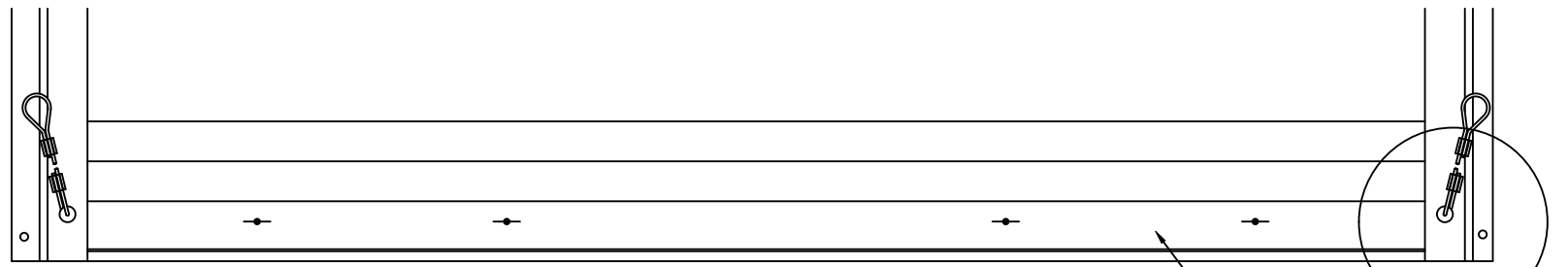


TOP VIEW

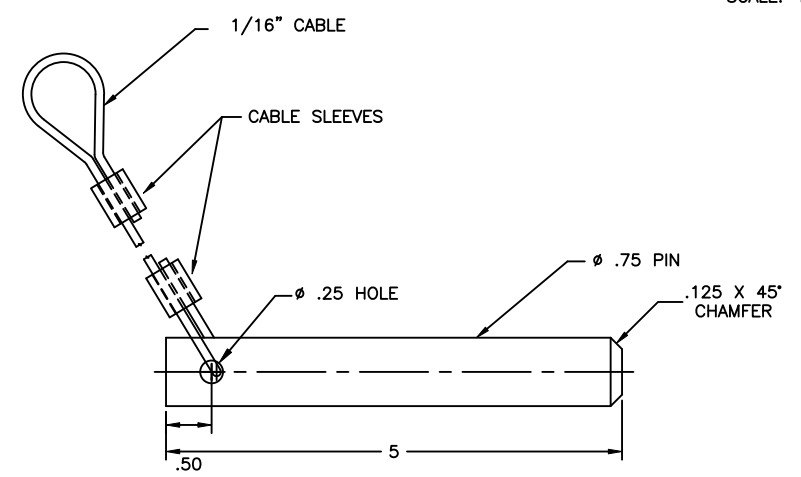


FRONT VIEW
OF WALL ANGLE

DETAILS FOR WELDING "E" GUIDES TO STEEL JAMBS



DETAIL "E"
SCALE: 4/1



DETAIL "F"

JOHN E. SCATES, PE
2560 KING ARTHUR BLVD, STE 124-54
LEWISVILLE, TX 75056
FL PE 51737 / TX PE 56308/F-2203

	TOLERANCES UNLESS OTHERWISE SPECIFIED		FINISH N/A		LEWISVILLE, TEXAS NAME M WOMACK DATE 10/10/03	DRAWING TITLE: SERIES 625, ROLLING SERVICE DOOR 22 FT. DADE COUNTY
	HOLE DIAMETER	WHOLE NUMBERS:				
ASME Y14.100 AND Y14.5 APPLY, UNLESS OTHERWISE SPECIFIED. DIMENSIONS ARE IN U.S. CUSTOMARY UNITS.	UNDER .251 +.004/- .003 .251 TO .500 +.006/- .003 OVER .500 +.008/- .003	± .25 ± .1 ± .03 ± .010 ± .5°	N/A	N/A	APPROVED BY: L KRUPKE DATE: 10/10/03	SCALE: NOTED SHEET 2 OF 2

8 | 7 | 6 | 5 | 4 | 3 | 2 | 1