

8

7

6

5

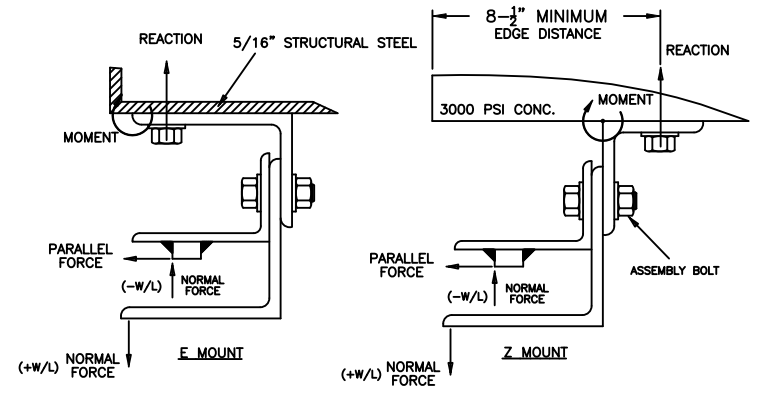
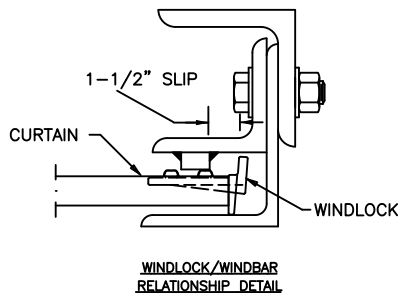
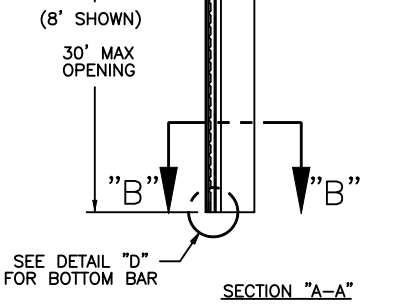
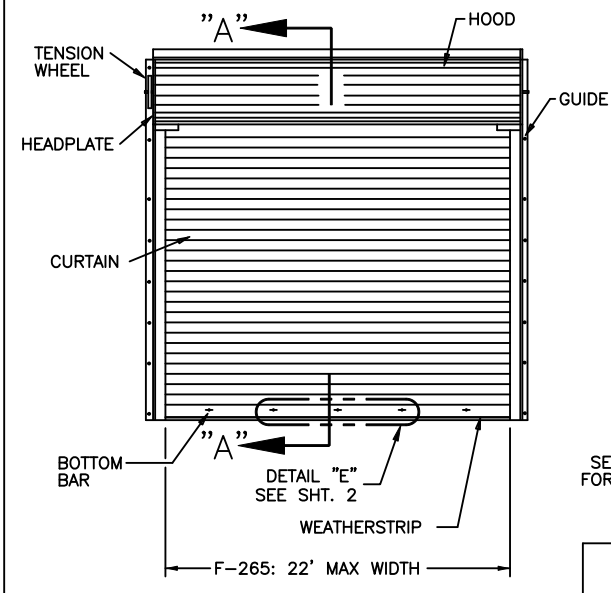
4

3

2

1

- NOTES
- (-W/L) = NEGATIVE WINDLOAD
(+W/L) = POSITIVE WINDLOAD
 - WALL ANGLES MAY BE WELDED TO STEEL JAMB.
SEE SHEET 2 FOR WELDING DETAILS.
 - RATED DESIGN LOAD ±65 PSF. LARGE MISSILE IMPACT TESTED AT 80 FT/SECOND IMPACT SPEED.
 - CURTAIN MATERIAL: ASTM A-653 CS TYPE B.
GUIDE MATERIAL: ASTM A-36
 - ALTERNATE CURTAIN MATERIAL: AISI-304 SS.
MINIMUM YIELD 40,000 PSI.
 - CURTAIN MATERIAL SHALL BE GALVANIZED ACCORDING TO ASTM A-525 TO G40 MINIMUM.
 - THE DOOR MAY BE INTERIOR OR EXTERIOR FACING.
 - PINS MUST BE ENGAGED AND CHAIN MUST BE HOOKED WHEN HURRICANE WINDS ARE ANNOUNCED.
 - WIND LOCKS ARE REQUIRED ON EACH SLAT
 - WINDLOCK MATERIAL: LOW CARBON CAST STEEL, GRADE 70-46 (485-250) PER ASTM A27. MIN TENSILE 70-KSI MIN YIELD 36-KSI. MIN ELONG 22%
 - WINDLOCKS ATTACHED TO EACH SLAT (CONTINUOUS)
 - RIVET SPECIFICATIONS:
1/4" DIAMETER RIVET, MINIMUM 1006 LOW-CARBON STEEL.
 - COMPLIES WITH IBC/IRC 2018



REVISIONS				
REV	DESCRIPTION	DATE	APPROVAL	
502140	H REV PER ER	5/3/13	MS	
32428	J REV PER PCR	7/22/20	RO	
32787	K REV PER PCR	5/31/22	DG	

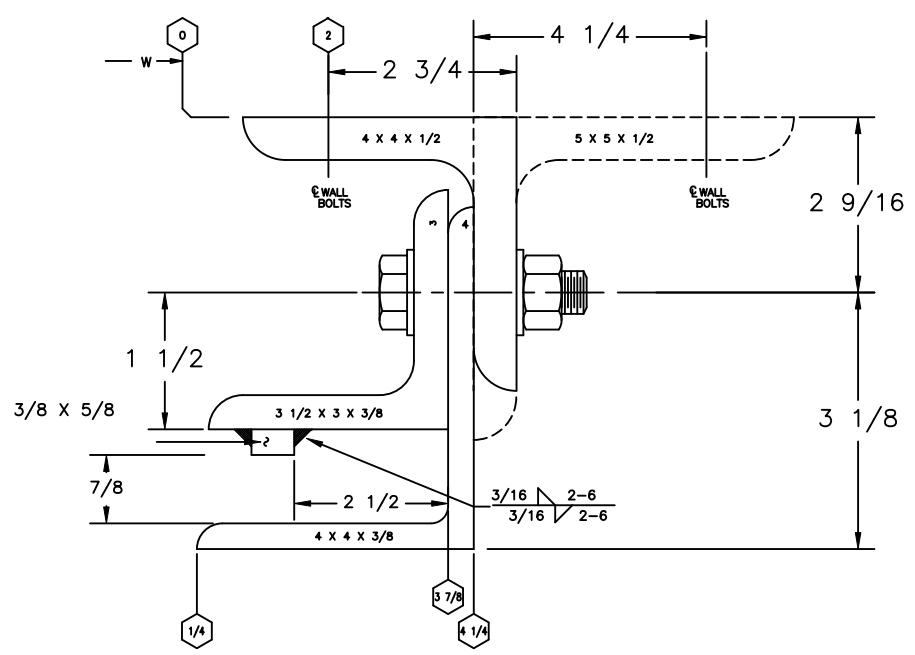
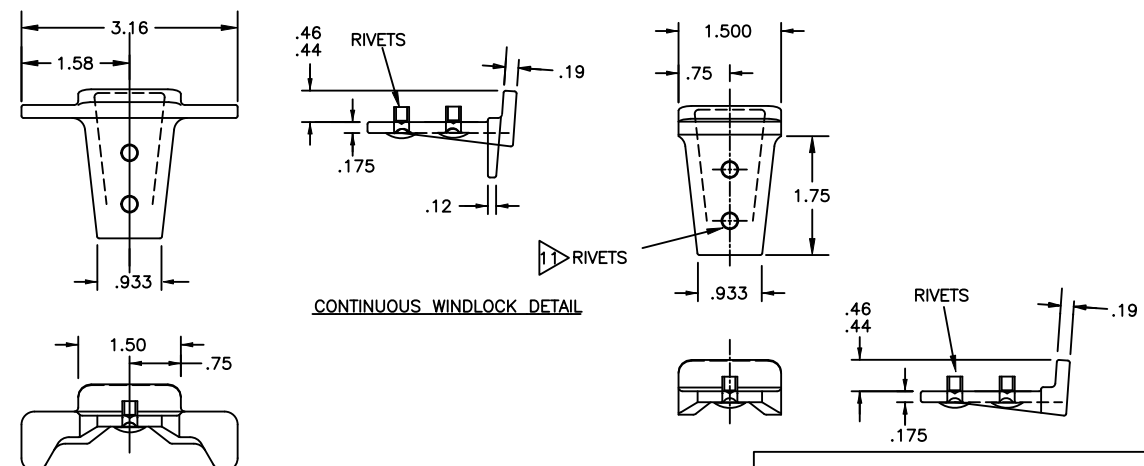
F-265 - DOOR SIZE REF. SUMMARY

PER FT DOOR HEIGHT	(E-MOUNT) LOADS *		(Z-MOUNT) LOADS *	
	20 GA **	18 GA	20 GA **	18 GA
REACTION (LBS)	9171	8999	3286	3236
NORMAL (LBS)	715	715	715	715
PARALLEL (LBS)	2583	2535	2583	2535
MOMENT (INLBS)	14323	14108	13966	13751

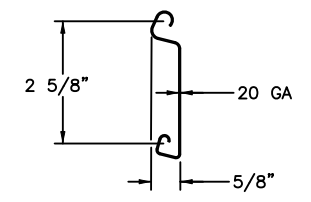
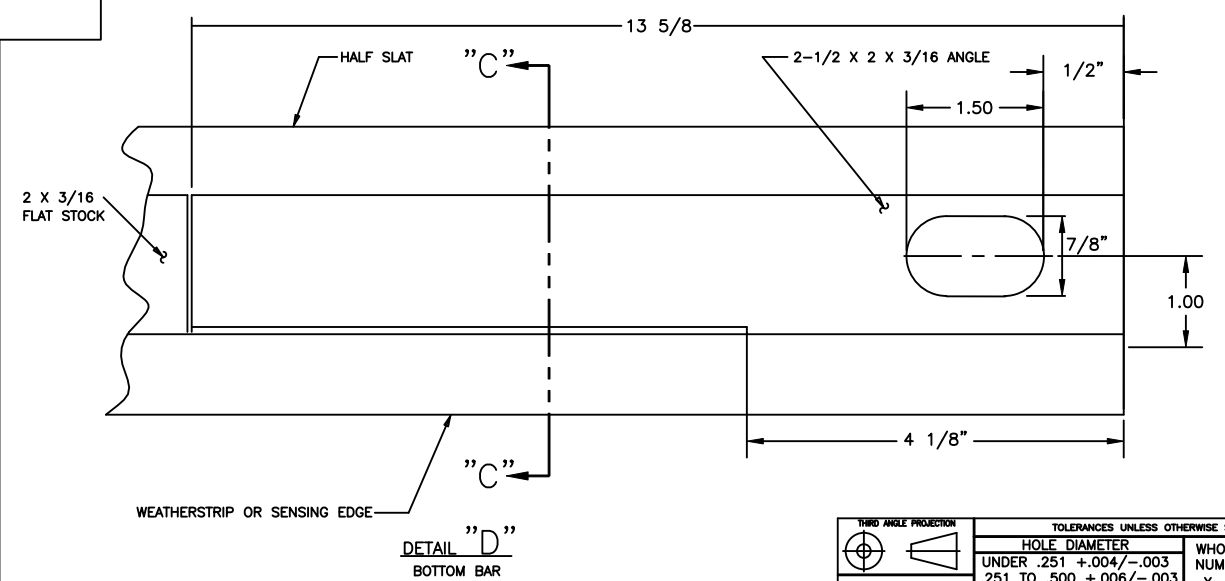
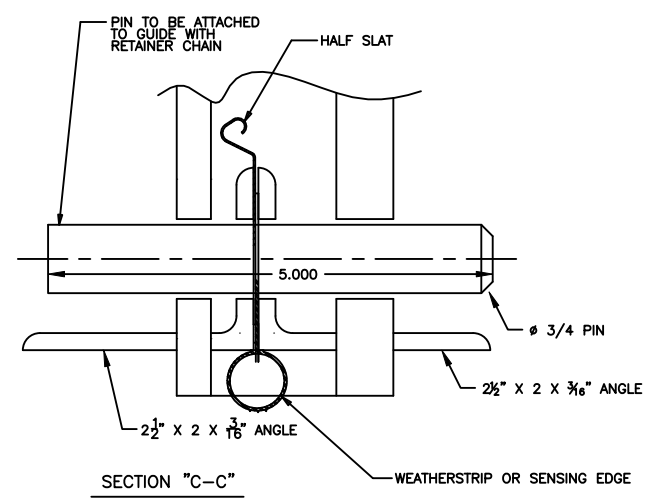
	ASSEMBLY BOLT	WALL BOLT STEEL JAMB	WALL BOLT *CONCRETE JAMB
F-265	5/8" GR 5, 9" O.C.	5/8" GR 5, 12" O.C.	5/8", 5 1/2" EFF. EMBED HILTI KBTZ2 OR EQUIVALENT 9" O.C.

* 3000 PSI MINIMUM & 8-1/2" MINIMUM EDGE DISTANCE FOR ANCHOR MINIMUM 12" CONCRETE THICKNESS

NOTE: FOR DETAILS ON WELDING GUIDES TO STEEL JAMBS SEE SHEET 2.



****PIN MUST BE ENGAGED FOR DOOR TO WITHSTAND DESIGN LOADS****



F-265 SLAT
GAUGE OPTIONS: 20**, 18
**TESTED IN ACCORDANCE WITH DADE COUNTY PROTOCOLS TAS 201-94, TAS 202-94, AND TAS 203-94

SERIES 611/621 ARE EQUIVALENT CONSTRUCTION

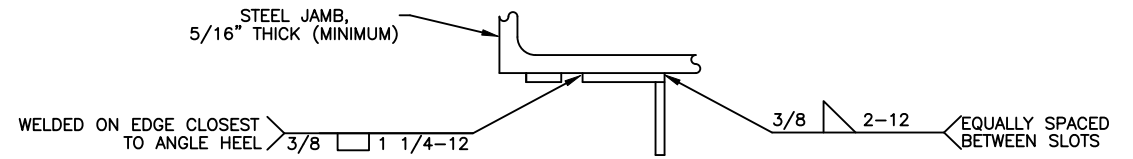
JOHN E. SCATES, PE
2560 KING ARTHUR BLVD, STE 124-54
LEWISVILLE, TX 75056
FL PE 51737 / TX PE 56308/F-2203

TOLERANCES UNLESS OTHERWISE SPECIFIED		FINISH		MATERIAL	
HOLE DIAMETER	UNDER .251 +.004/- .003	WHOLE NUMBERS:	± .25	UNIT OF MEASURE	N/A
	.251 TO .500 +.006/- .003	.X	± .1		
	OVER .500 +.008/- .003	.XX	± .03		
FRACTIONS		.XXX	± .010		
	± 1/16	ANGLES:	± .5°		

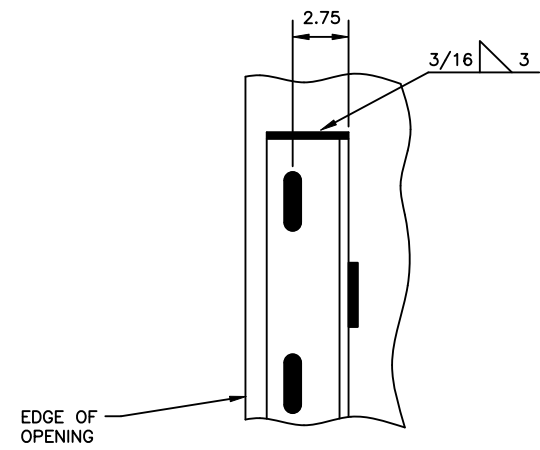
NAME	DATE	DRAWING TITLE
DRAWN BY: G FINERAN	8/8/03	SERIES 610/620, ROLLING SERVICE DOOR 22 FT. DADE COUNTY
CHECKED BY: JD FAW	9/5/03	DRAWING NUMBER D-308133
APPROVED BY: L KRUPKE	9/5/03	SCALE: NONE SHEET 1 OF 2

8 | 7 | 6 | 5 | 4 | 3 | 2 | 1

NOTES

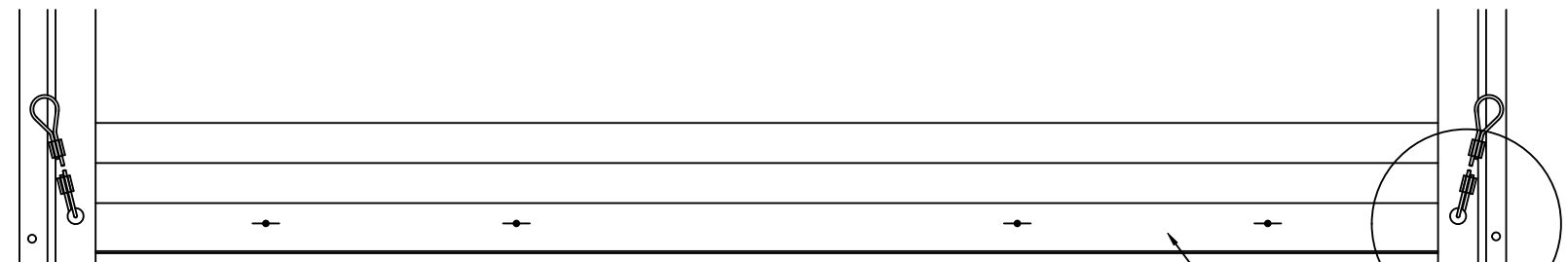


TOP VIEW

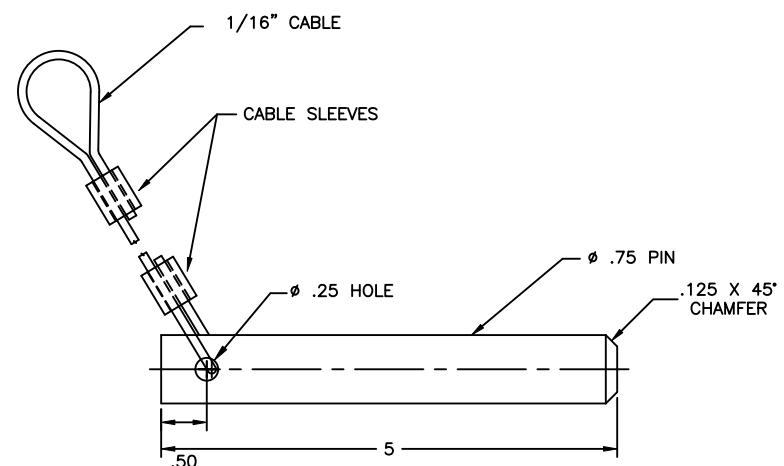


FRONT VIEW OF WALL ANGLE

DETAILS FOR WELDING "E" GUIDES TO STEEL JAMBS



DETAIL "E"
SCALE: 4/1



DETAIL "F"

JOHN E. SCATES, PE
2560 KING ARTHUR BLVD, STE 124-54
LEWISVILLE, TX 75056
FL PE 51737 / TX PE 56308/F-2203

<p>THIRD ANGLE PROJECTION</p> <p>ASME Y14.100 AND Y14.5 APPLY, UNLESS OTHERWISE SPECIFIED DIMENSIONS ARE IN U.S. CUSTOMARY UNITS.</p>	<p>TOLERANCES UNLESS OTHERWISE SPECIFIED</p> <p>HOLE DIAMETER</p> <p>UNDER .251 +.004/- .003</p> <p>.251 TO .500 +.006/- .003</p> <p>OVER .500 +.008/- .003</p>		<p>WHOLE NUMBERS: ± .25</p> <p>.X ± .1</p> <p>.XX ± .03</p> <p>.XXX ± .010</p> <p>ANGLES: ± .5°</p>	<p>FINISH N/A</p> <p>UNIT OF MEASURE N/A</p>	<p>The Genuine. The Original.</p> <p>LEWISVILLE, TEXAS</p> <p>MATERIAL: N/A</p>	<p>NAME</p> <p>DRAWN BY: M WOMACK</p> <p>CHECKED BY: JD FAW</p> <p>APPROVED BY: L KRUPKE</p>	<p>DATE</p> <p>10/10/03</p> <p>10/10/03</p> <p>10/10/03</p>	<p>DRAWING TITLE:</p> <p>SERIES 610/620, ROLLING SERVICE DOOR 22 FT. DADE COUNTY</p> <p>DRAWING NUMBER D- 308133</p> <p>SCALE: NOTED SHEET 2 OF 2</p>
	<p>FRACTIONS ± 1/16</p>							

8 | 7 | 6 | 5 | 4 | 3 | 2 | 1