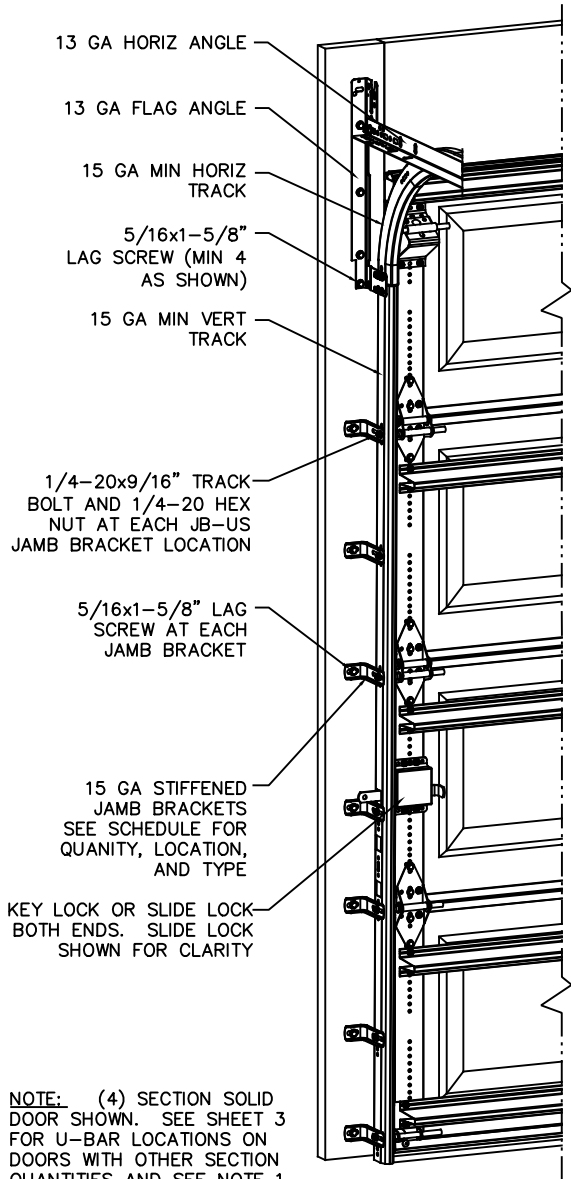


**NOTES:**

1. IMPACT RESISTANT GLAZING SYSTEM MAY BE INSTALLED IN TOP OR INTERMEDIATE SECTION (WITH OR WITHOUT DECORATIVE INSERTS). GLAZING SHALL BE 1/4" MAKROLON-AR POLYCARBONATE OR EQUAL (MIAMI-DADE APPROVED) SECURED WITH (10) #8X1 SHEET METAL SCREWS; (2) ALONG EACH VERTICAL LEG AND (3) ALONG EACH HORIZONTAL LEG. MAXIMUM CLEAR OPENING SHALL BE 16" x 9.63". SEE DETAIL A ON SHEET 3 FOR ASSEMBLY DETAILS.
2. VINYL OR WOOD DOOR STOP NAILED A MAXIMUM OF 6" O.C. MUST OVERLAP TOP AND BOTH ENDS OF PANELS MINIMUM 7/16" TO MEET NEGATIVE PRESSURES.
3. KEY LOCK OR SLIDE LOCK REQUIRED.
4. SECTION STEEL TO HAVE A MINIMUM 24 GA THICKNESS WITH A MINIMUM G90 COATING AND A MINIMUM YIELD STRENGTH OF 33.8 KSI WITH BAKED ON PRIMER AND AND TOP COAT.
5. THE DESIGN OF THE SUPPORTING STRUCTURAL ELEMENTS SHALL BE THE RESPONSIBILITY OF THE PROFESSIONAL OF RECORD FOR THE BUILDING OR STRUCTURE AND IN ACCORDANCE WITH CURRENT BUILDING CODES FOR THE LOADS LISTED ON THIS DRAWING.
6. WOOD SUBSTRATE FOR DOOR JAMB IS TO BE MINIMUM 2x6 NO. 3 SOUTHERN PINE RELATIVELY KNOT FREE. FOR DIRECT MOUNTING OF JAMB BRACKETS TO OTHER SUBSTRATES, SEE JAMB CONNECTION SUPPLEMENT.
7. APPROVED INSULATED AND NON-INSULATED: 8024(24GA), 8124 (24GA), 8224 (24GA).
8. FOR LOW HEAD ROOM LIFT CONDITIONS, TOP BRACKET SHALL BE A 13 GA LHR 7/4 TOP BRACKET WITH A MINIMUM OF (3) 1/4-14x7/8" SELF DRILLING CRIMPITE SCREWS IN LIEU OF THE BRACKET SHOWN ON THIS DRAWING. U-BAR ON TOP SECTION SHALL BE INSTALLED ON TOP OF LHR TOP BRACKETS.
9. THIS DOOR HAS NOT BEEN TESTED FOR AIR INFILTRATION.
10. TESTED IN ACCORDANCE WITH DADE COUNTY PROTOCOLS TAS 201-94, TAS 202-94, & TAS 203-94
11. THE DESIGN OF THE SUPPORTING STRUCTURAL ELEMENTS SHALL BE THE RESPONSIBILITY OF THE PROFESSIONAL OF RECORD FOR THE BUILDING OR STRUCTURE AND IN ACCORDANCE WITH CURRENT BUILDING CODES FOR THE LOADS LISTED ON THIS DRAWING.
12. COMPLIES WITH THE REQUIREMENTS OF IBC/IRC 2018



**NOTE:** (4) SECTION SOLID DOOR SHOWN. SEE SHEET 3 FOR U-BAR LOCATIONS ON DOORS WITH OTHER SECTION QUANTITIES AND SEE NOTE 1 THIS SHEET FOR GLAZING OPTIONS.

**JAMB BRACKET SCHEDULE**

DOOR HEIGHT	NO. OF SECTIONS	NO. OF JAMB BRACKETS (EACH JAMB)	LOCATION OF CENTERLINE OF JAMB BRACKETS MEASURED FROM BOTTOM OF TRACK (ALL DIMENSIONS ± 2")
6'-6"	4	7	2" (JB-US), 10" (JB-US), 21-3/4" (JB-US), 29-3/4" (JB-US), 39" (JB-US), 48" (JB-US), 57-1/4" (JB-US)
7'-0"	4	7	2" (JB-US), 10" (JB-US), 21-3/4" (JB-US), 29-3/4" (JB-US), 42" (JB-US), 52-1/2" (JB-US), 63-1/4" (JB-US)
7'-6"	5	8	2" (JB-US), 10" (JB-US), 18-3/4" (JB-US), 26-3/4" (JB-US), 36" (JB-US), 45" (JB-US), 54-1/4" (JB-US), 74-1/2" (JB-US)
8'-0"	5	8	2" (JB-US), 10" (JB-US), 21-3/4" (JB-US), 29-3/4" (JB-US), 39" (JB-US), 48" (JB-US), 57-1/2" (JB-US), 75-1/2" (JB-US)

**NOTE:** (JB-US) FOLLOWING DIMENSION DENOTES SLOTTED JAMB BRACKET ATTACHED TO TRACK WITH 1/4-20x9/16" TRACK BOLT AND NUT AS SHOWN ABOVE.

ALL DOORS WITH DECORATIVE OVERLAY REQUIRE USE OF CONTINUOUS WALL ANGLE. SEE SHEET 4 FOR DETAILS.

**SUPERIMPOSED DESIGN PRESSURE LOADS ON SUPPORTING STRUCTURE**

DOOR WIDTH	DOOR HEIGHT	UNIFORM LOAD EACH JAMB (PLF)
8'-0"	ALL	+184.0/-208.0
9'-0"	ALL	+207.0/-234.0

JOHN E. SCATES, PE  
2560 KING ARTHUR BLVD #124-54  
LEWISVILLE, TX 75056  
FL PE 51737  
TX PE 56308/F2203

PROFESSIONAL ENGINEER'S SEAL PROVIDED ONLY FOR VERIFICATION OF WINDLOAD CONSTRUCTIN DETAILS.

**REVISIONS**

P1 MODIFIED TRACK NOTE FOR DOORS WITH DECORATIVE OVERLAYS. ADDED CONTINUOUS WALL ANGLE DETAIL SHEET 3. UPDATED NOTES FOR CONTINUOUS WALL ANGLE MOUNTING. GRT 10/10/07

P2 ADDED IMPACT RESISTANT GLAZING. MODIFIED NOTES SHEET 1 FOR GLAZING. ADDED DETAIL A SHEET 2 FOR GLAZING. GRT 11/10/07

P3 UPDATED TITLE BLOCK. ADDED STRUT PROFILE. UPDATED POLYCARBONATE NOA. GRT 5/18/10

P4 UPDATES MADE FOR MIAMI-DADE APPROVAL. GRT 5/11/18

REV E - UPDATES FOR TDI RE-EVALUATION. TLC 1/18/22



3395 ADDISON DRIVE  
PENSACOLA, FLORIDA 32514  
(850) 474-9890

STATIC PRESSURE RATINGS		APPROVED SIZES	SCALE: N.T.S.	SIZE: A
DESIGN (PSF):	+48.00/-52.00	MAX WIDTH: 9'-0"	DATE	NAME
TEST (PSF):	+89.00/-78.00	MAX HEIGHT: 14'-0"	DRAWN	GRT
IMPACT/CYCLIC RATED (YES/NO):	YES	MAX SECTION HEIGHT: 21"	CHECKED	TLC
MODEL 8024/8124			SHEET 1 OF 3	
WINDLOAD SPECIFICATION OPTION CODE 1300			DRAWING PART NO.	REV.
			329928	E

13 GA ROLLER SLIDE ATTACHED TO BRACKET WITH 5/16-18 BOLT & NUT IN CENTER SLOT AND 1/4-20x9/16" TRACK BOLT & 1/4-20 HEX NUT THROUGH ANY TWO ALIGNING HOLES

11 GA COMMERCIAL 'A' FRAME TOP BRACKET ATTACHED WITH (4) 1/4-14x7/8" SELF DRILLING CRIMPTITE SCREWS

ADD (2) 1/4-14x7/8" SELF DRILLING CRIMPTITE SCREWS (INSIDE OF EACH END HINGE)

2" NYLON WINDLOAD ROLLER WITH 4-1/2" STEM

14 GA WIDE BODY END HINGE ATTACHED WITH (4) 1/4-14x7/8" SELF DRILLING CRIMPTITE SCREWS

18 GA NARROW BODY INTERMEDIATE HINGE ATTACHED WITH (4) 1/4-14x7/8" SELF DRILLING CRIMPTITE SCREWS

14 GA BOTTOM BRACKET ATTACHED WITH (2) 1/4-14x7/8" SELF DRILLING CRIMPTITE SCREWS AND (1) 1/4-14x5/8" SELF DRILLING TAMPER RESISTANT SCREW

20 GA CENTER STILE

Ø DOOR

16 GA END STILE

JOHN E. SCATES, PE  
2560 KING ARTHUR BLVD #124-54  
LEWISVILLE, TX 75056  
FL PE 51737  
TX PE 56308/F2203

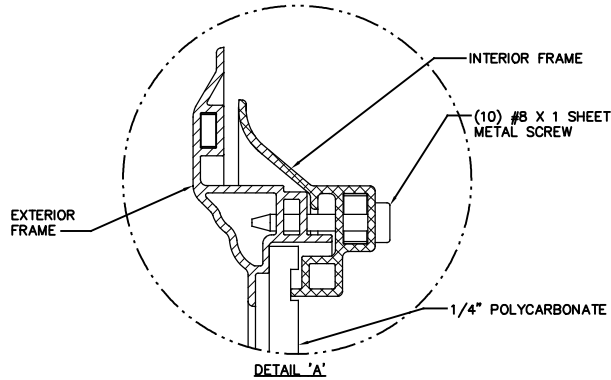
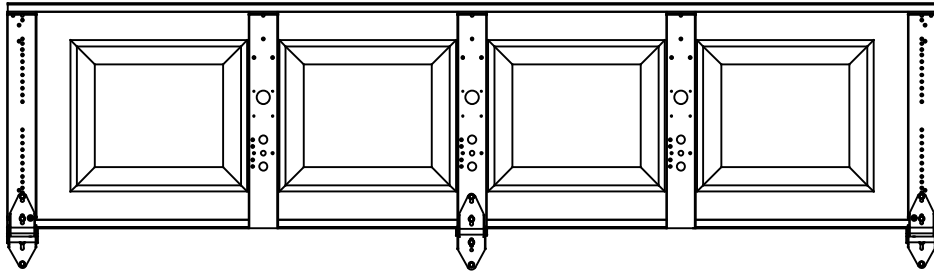
PROFESSIONAL ENGINEER'S SEAL PROVIDED ONLY FOR VERIFICATION OF WINDLOAD CONSTRUCTION DETAILS.



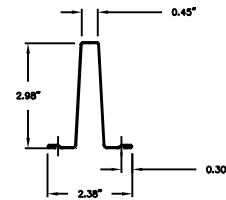
3395 ADDISON DRIVE  
PENSACOLA, FLORIDA 32514  
(850) 474-9990

STATIC PRESSURE RATINGS		APPROVED SIZES	SCALE: N.T.S.	SIZE: A
DESIGN (PSF):	+46.00/-52.00	MAX WIDTH: 9'-0"	DATE	NAME
TEST (PSF):	+69.00/-78.00	MAX HEIGHT: 14'-0"	DRAWN 2/22/07	GRT
IMPACT/CYCLIC RATED (YES/NO): YES	MAX SECTION HEIGHT: 21"	CHECKED 1/3/22	TLC	
MODEL 8024/8124			SHEET 2 OF 3	
WINDLOAD SPECIFICATION OPTION CODE 1300			DRAWING PART NO.	REV.
			329928	E

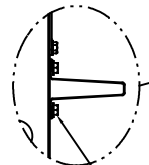
*CENTER STILE & INTERMEDIATE HINGE LOCATIONS*



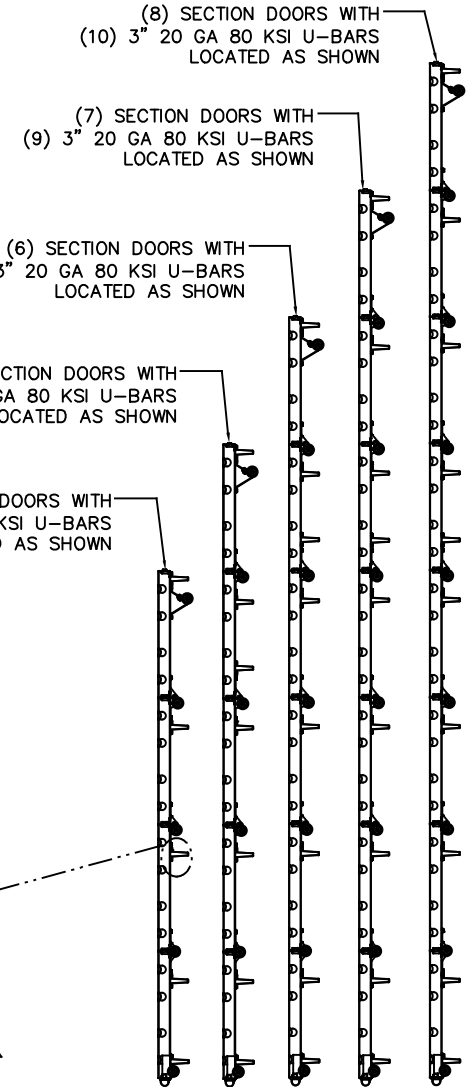
IMPACT WINDOW / ALUMINUM FRAME WITH GROOVED POLYCARBONATE



STRUT PROFILE



ATTACH U-BARS WITH  
(2) 1/4-14x7/8\"/>



(8) SECTION DOORS WITH  
(10) 3\"/>

(7) SECTION DOORS WITH  
(9) 3\"/>

(6) SECTION DOORS WITH  
(8) 3\"/>

(5) SECTION DOORS WITH  
(7) 3\"/>

(4) SECTION DOORS WITH  
(5) 3\"/>

JOHN E. SCATES, PE  
2560 KING ARTHUR BLVD #124-54  
LEWISVILLE, TX 75056  
FL PE 51737  
TX PE 56308/F2203

PROFESSIONAL ENGINEER'S SEAL PROVIDED ONLY FOR  
VERIFICATION OF WINDLOAD CONSTRUCTIN DETAILS.



3395 ADDISON DRIVE  
PENSACOLA, FLORIDA 32514  
(850) 474-9890

STATIC PRESSURE RATINGS		APPROVED SIZES		SCALE: N.T.S.		SIZE: A
DESIGN (PSF):	+46.00/-52.00	MAX WIDTH:	9'-0"	DATE	NAME	
TEST (PSF):	+69.00/-78.00	MAX HEIGHT:	14'-0"	DRAWN	GRT	
IMPACT/CYCLIC RATED (YES/NO):	YES	MAX SECTION HEIGHT:	21'	CHECKED	1/3/22 TLC	
MODEL 8024/8124				SHEET 3 OF 3		
WINDLOAD SPECIFICATION OPTION CODE 1300				DRAWING PART NO.	REV.	
				329928	E	