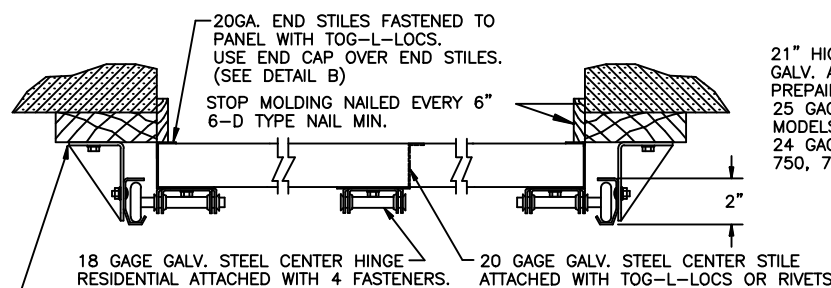


DETAIL E

3 BRACKETS EACH SIDE



SECTION B-B

DOOR SIZE		P.S.F. TABLE			
WIDTH	HEIGHT	DESIGN PRESSURE		TEST PRESSURE	
		POSITIVE	NEGATIVE	POSITIVE	NEGATIVE
9'-0"	7'-0"	+42.6	-48.9	+63.9	-73.4

NOTE: UNLESS SPECIFIED OTHERWISE, ALL FASTENERS ARE 1/4"-14 X 3/4" HEX HEAD SHEET METAL SCREWS OR 1/4"-20 X 5/8" HEX BOLTS AND NUTS.

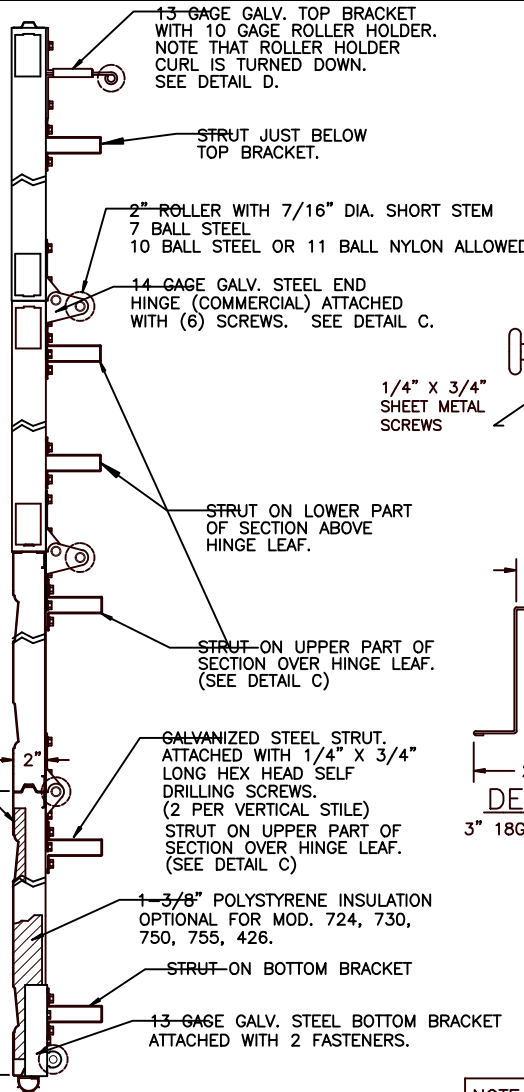
DOORS SHOWN ON THIS DRAWING HAVE BEEN DEMONSTRATED TO WITHSTAND THE PRESSURES LISTED IN THE TABLE ABOVE VIA TESTING TO ANSI/DASMA 108-05/12/17.

DETERMINATION OF SUITABILITY FOR SPECIFIC SITES IS THE RESPONSIBILITY OF OTHERS.

John E Scates PE
2560 King Arthur Blvd #124-54
Lewisville, TX 75056
TX-PE 56308, F-2203
FL-PE-51737

Professional Engineer's seal provided only for verification of windload construction details.

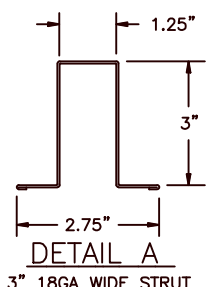
COMPLIES WITH THE WINDLOAD REQUIREMENTS OF THE IBC/IRC 2018.



SECTION A-A

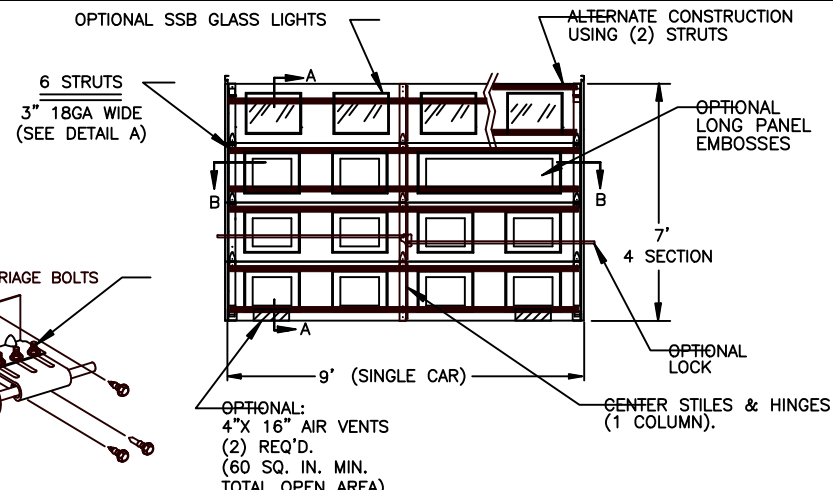
NOTE: GLAZING DOES NOT SATISFY IMPACT DEBRIS REQUIREMENTS IN FBC

DETAIL D



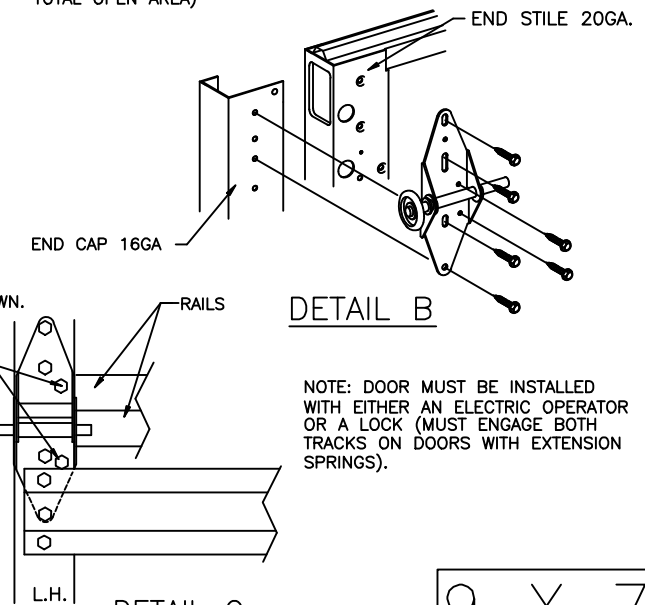
DETAIL A

DETAIL D



DETAIL D

USE TWO EXTRA SELF DRILLING SCREWS THROUGH LEAF OF HINGE, END STILES & RAIL AS SHOWN. TYPICAL EACH END HINGE.



DETAIL B

NOTE: DOOR MUST BE INSTALLED WITH EITHER AN ELECTRIC OPERATOR OR A LOCK (MUST ENGAGE BOTH TRACKS ON DOORS WITH EXTENSION SPRINGS).

DETAIL C

FL 15080 9 X 7

D	ROLLER NOTES, PE ADDRESS	5/29/20
C	REV LOGO & ADDRESS	1/28/13
B		12/15/11 RLB
A	2866	3/10/08 RLB
	2848	11/1/07 RLB
REV.	E.C.N.	DATE APPROV.

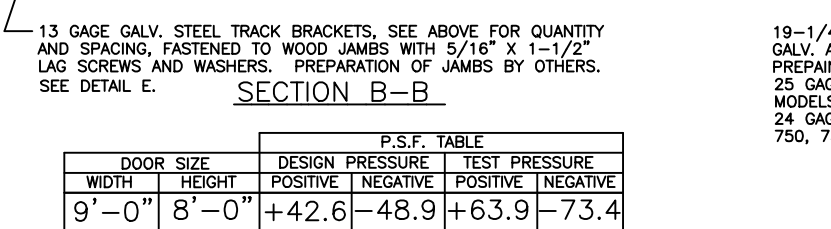
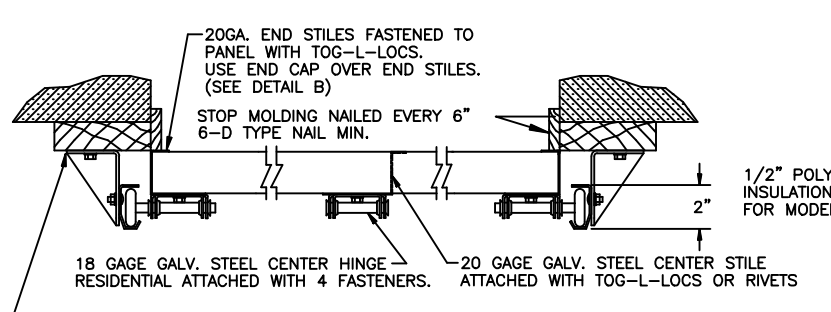
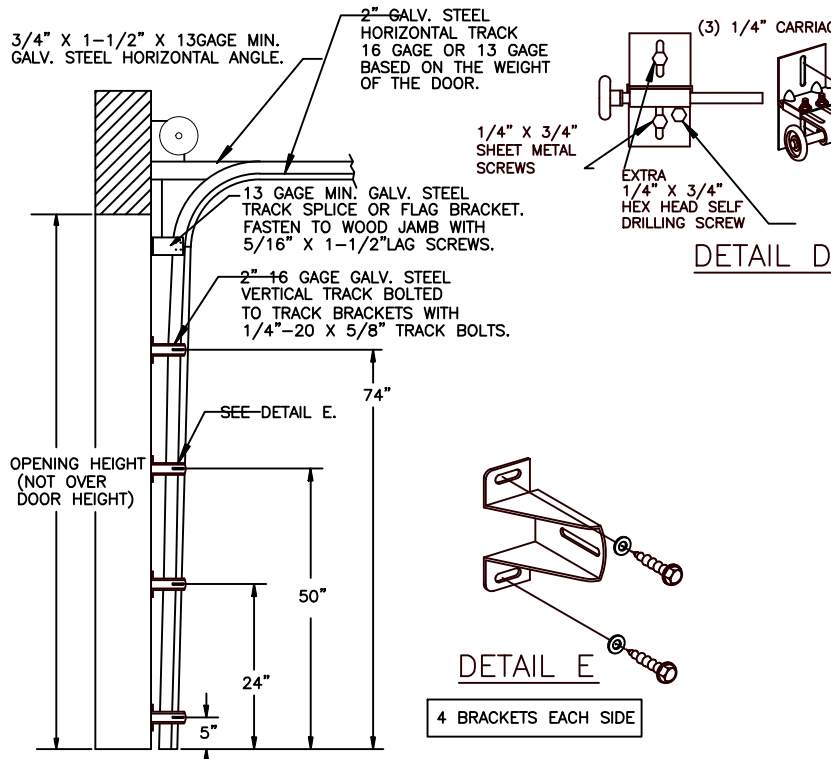
W WINDSOR DOOR

5800 SCOTT HAMILTON DR. LITTLE ROCK, AR 72209 (501) 562-1872

MODELS: 724, 426, 730, 735, 750, 755

PART NAME: WINDLOAD RESIDENTIAL PAN DOOR W4 C

NEXT LEVEL	DATE: 11/01/07	DWG. NO. 99-B-084
SCALE NONE	PLOT SCALE	DRN. BY BH
		SHEET 1 OF 2

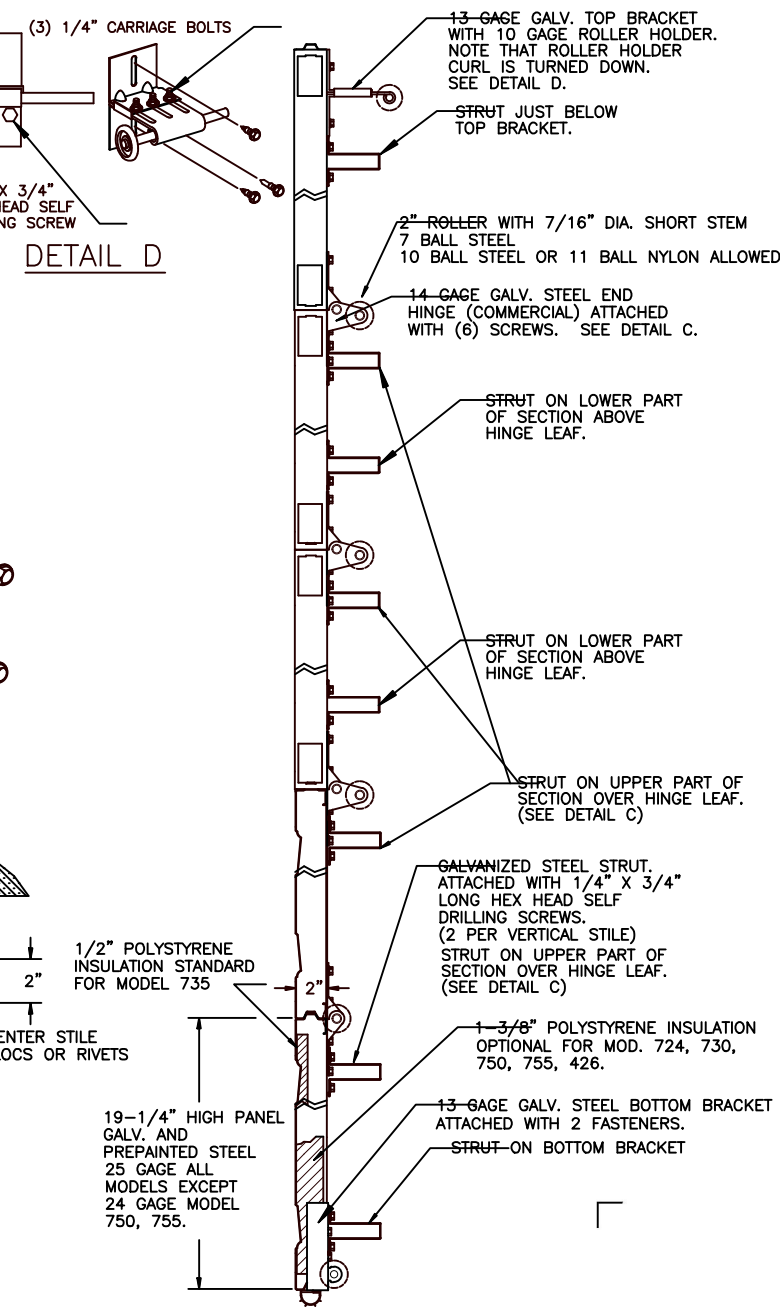


DOORS SHOWN ON THIS DRAWING HAVE BEEN DEMONSTRATED TO WITHSTAND THE PRESSURES LISTED IN THE TABLE ABOVE VIA TESTING TO ANSI/DASMA 108-05/12/17.

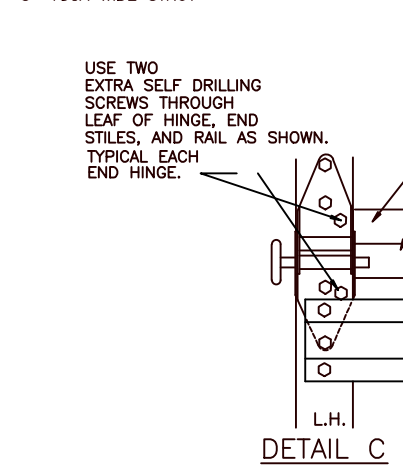
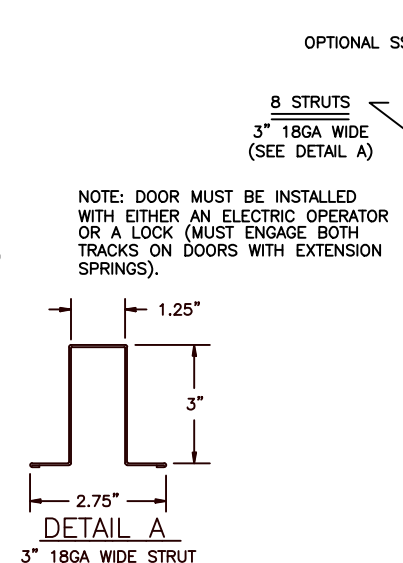
DETERMINATION OF SUITABILITY FOR SPECIFIC SITES IS THE RESPONSIBILITY OF OTHERS.

John E. Scates PE
2560 King Arthur Blvd #124-54
Lewisville, TX 75056
TX-PE 56308, F-2203
FL-PE-51737

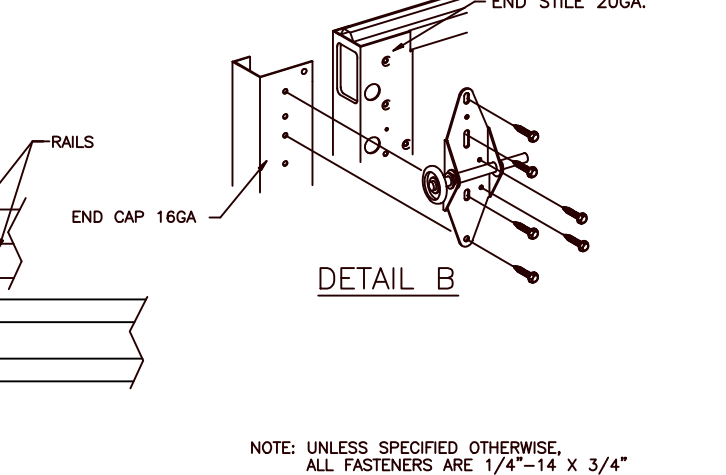
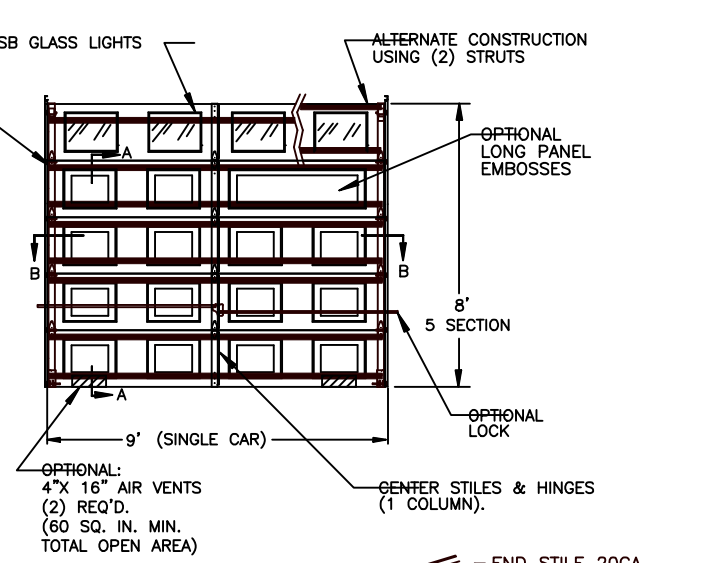
Professional Engineer's seal provided only for verification of windload construction details.



COMPLIES WITH THE WINDLOAD REQUIREMENTS OF THE IBC/RC 2018.



NOTE: GLAZING DOES NOT SATISFY IMPACT DEBRIS REQUIREMENTS IN FBC



NOTE: UNLESS SPECIFIED OTHERWISE, ALL FASTENERS ARE 1/4\"/>

P.S.F. TABLE					
DOOR SIZE		DESIGN PRESSURE		TEST PRESSURE	
WIDTH	HEIGHT	POSITIVE	NEGATIVE	POSITIVE	NEGATIVE
9'-0"	8'-0"	+42.6	-48.9	+63.9	-73.4

W WINDSOR DOOR

5800 SCOTT HAMILTON DR.
LITTLE ROCK, AR 72209
(501) 562-1872

D	ROLLER NOTES, PE ADDRESS	5/29/20	
C	REV LOGO & ADDRESS	1/28/13	
B		12/15/11	RLB
A	2866	3/10/08	RLB
	2848	11/1/07	RLB
REV.	E.C.N.	DATE	APPROV.

MODELS: 724, 426, 730, 735, 750, 755		
PART NAME: WINDLOAD RESIDENTIAL PAN DOOR W4 C		
NEXT LEVEL	DATE: 11/01/07	DWG. NO. 99-B-084
PLOT SCALE	DRN. BY BH	SHEET 2 OF 2

COMPLIES WITH THE WINDLOAD REQUIREMENTS OF THE IBC/RC 2018.