

NOTE: GLAZING DOES NOT SATISFY IMPACT DEBRIS REQUIREMENTS IN FBC

FL 15080

9	X	7
9	X	8

P.S.F. TABLE					
DOOR SIZE		DESIGN PRESSURE		TEST PRESSURE	
WIDTH	HEIGHT	POSITIVE	NEGATIVE	POSITIVE	NEGATIVE
9'-0"	7'-0"	+22.9	-26.4	+34.4	-39.6
9'-0"	8'-0"	+19.2	-22.2	+28.8	-33.3

NOTE: ALL NON-DESCRIPTIVE FASTENERS SHOWN TO BE 1/4"-20 X 5/8" HEX BOLTS & NUTS OR 1/4" X 3/4" LONG HEX HEAD SHEET METAL SCREWS.

DOORS SHOWN ON THIS DRAWING HAVE BEEN DEMONSTRATED TO WITHSTAND THE PRESSURES LISTED IN THE TABLE ABOVE VIA TESTING TO ANSI/DASMA 108-05/12/17.

DETERMINATION OF SUITABILITY FOR SPECIFIC SITES IS THE RESPONSIBILITY OF OTHERS.

John E. Scates PE
2560 King Arthur Blvd #124-54
Lewisville, TX 75056
TX-PE 56308, F-2203
FL-PE-51737

Professional Engineer's seal provided only for verification of windload construction details.

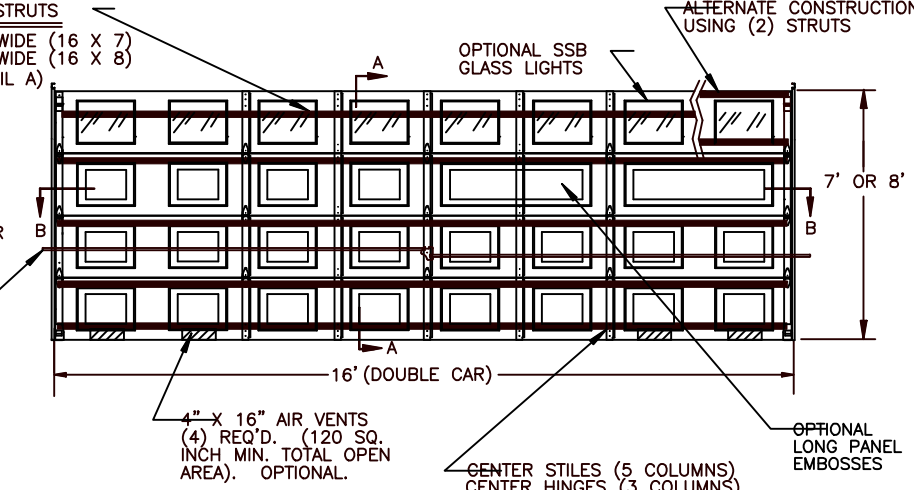
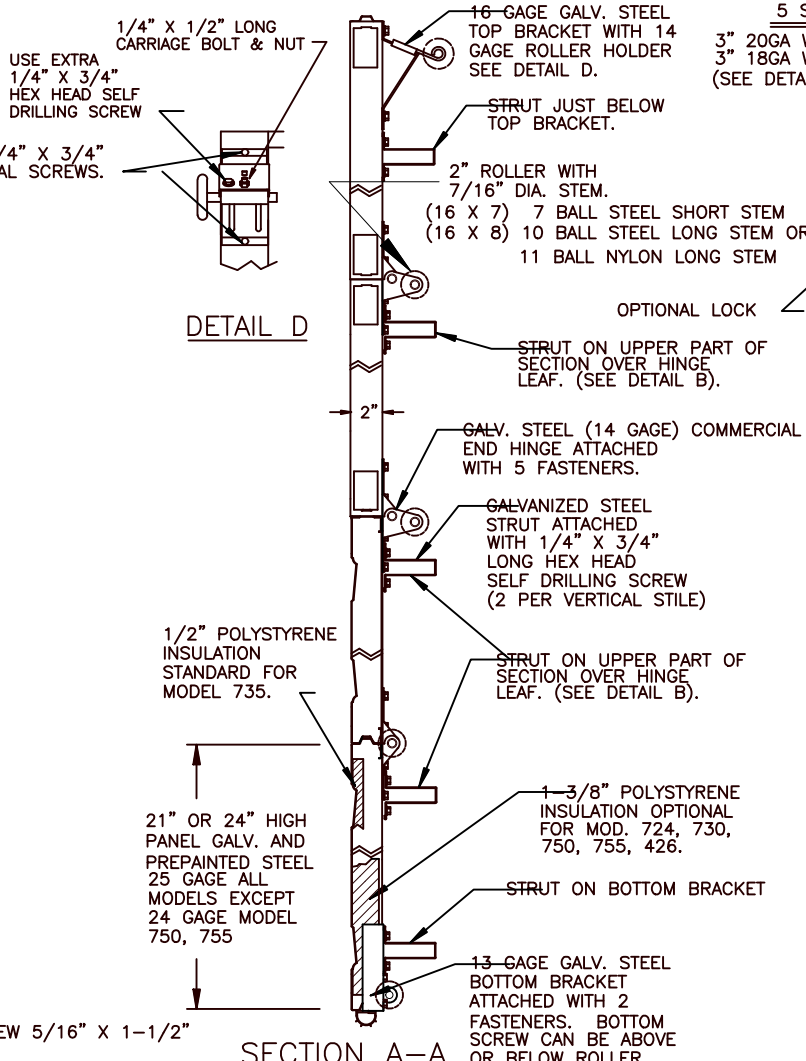
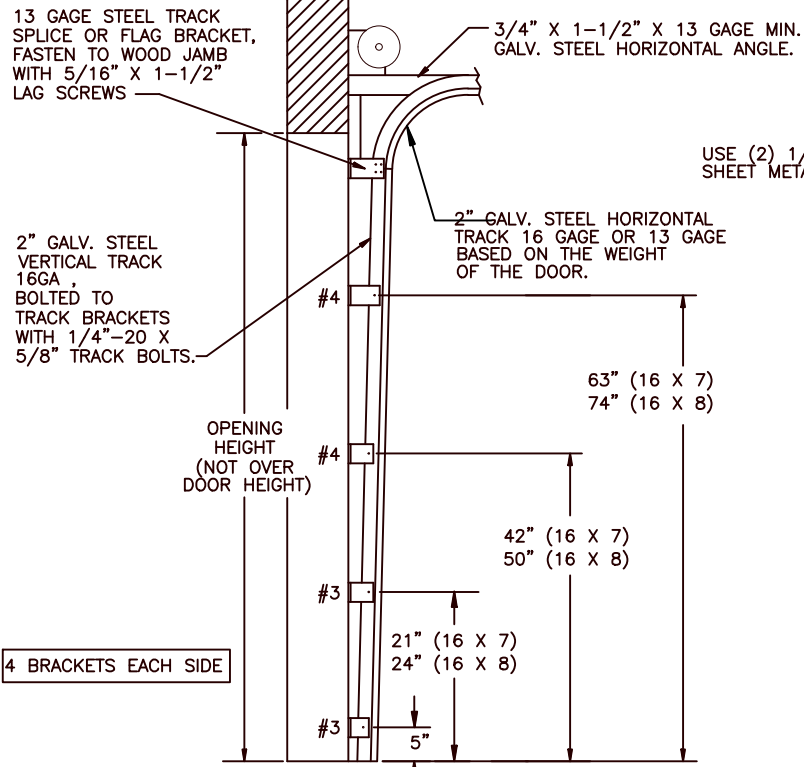
COMPLIES WITH THE WINDLOAD REQUIREMENTS OF THE IBC/IRC 2018.

D	ROLLER NOTES, PE ADDRESS	5/27/20
C	REV LOGO & ADDRESS	1/28/13
B	12/15/11	RLB
A	2866 3/10/08	RLB
	2848 11/1/07	RLB
REV.	E.C.N.	DATE:
		APPROV.

W WINDSOR DOOR

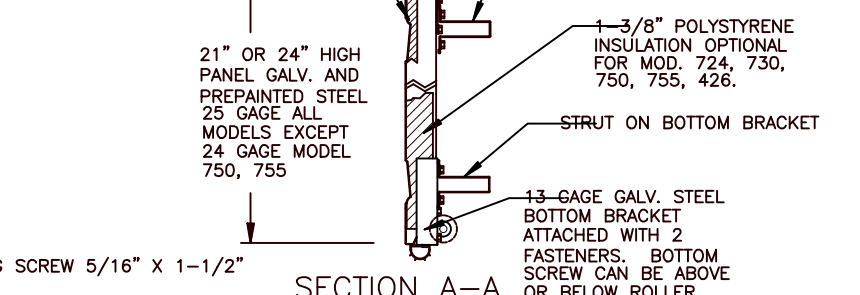
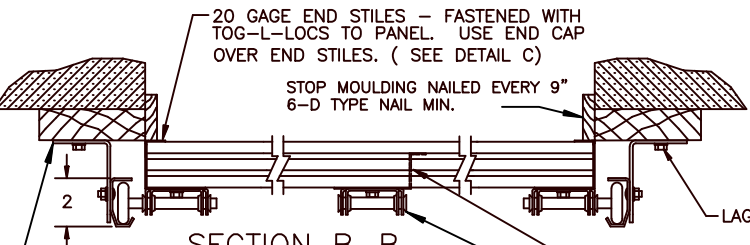
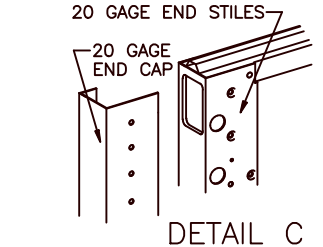
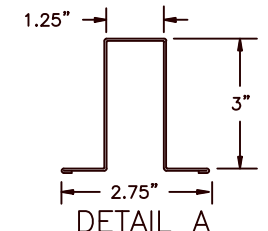
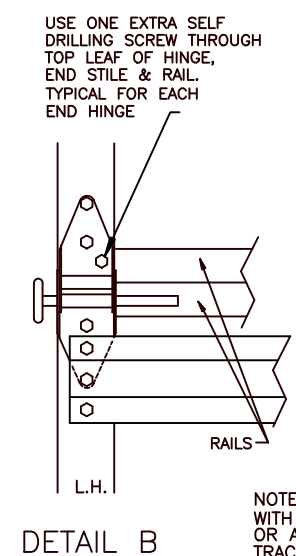
5800 SCOTT HAMILTON DR.
LITTLE ROCK, AR 72209
(501) 562-1872

MODELS: 724, 426, 730, 735, 750, 755			
PART NAME: WINDLOAD RESIDENTIAL PAN DOOR W1 B			
TOLERANCE	FRAC. ± 1/64" DEC. ± .015 ANG. ± 1'	NEXT LEVEL	DATE: 11/1/07
SCALE NONE	PLOT SCALE	DRN. BY BH	DWG. NO. 99-B-079
			SHT 1 OF 3



4 BRACKETS EACH SIDE

DETAIL D



NOTE: DOOR MUST BE INSTALLED WITH EITHER AN ELECTRIC OPERATOR OR A LOCK (MUST ENGAGE BOTH TRACKS ON DOORS WITH EXTENSION SPRINGS).

16' X 7'
16' X 8'

NOTE: GLAZING DOES NOT SATISFY IMPACT DEBRIS REQUIREMENTS IN FBC

FL 15080

P.S.F. TABLE					
DOOR SIZE		DESIGN PRESSURE		TEST PRESSURE	
WIDTH	HEIGHT	POSITIVE	NEGATIVE	POSITIVE	NEGATIVE
16'-0"	7'-0"	+18.7	-20.8	+28.1	-31.2
16'-0"	8'-0"	+18.7	-20.8	+28.1	-31.2

NOTE: ALL NON-DESCRIPTIVE FASTENERS SHOWN TO BE 1/4"-20 X 5/8" HEX BOLTS & NUTS OR 1/4" X 3/4" LONG HEX HEAD SHEET METAL SCREWS.

DOORS SHOWN ON THIS DRAWING HAVE BEEN DEMONSTRATED TO WITHSTAND THE PRESSURES LISTED IN THE TABLE ABOVE VIA TESTING TO ANSI/DASMA 108-05/12/17.

DETERMINATION OF SUITABILITY FOR SPECIFIC SITES IS THE RESPONSIBILITY OF OTHERS.

John E Scates PE
2560 King Arthur Blvd #124-54
Lewisville, TX 75056
TX-PE 56308, F-2203
FL-PE-51737

Professional Engineer's seal provided only for verification of windload construction details.

COMPLIES WITH THE WINDLOAD REQUIREMENTS OF THE IBC/IRC 2018.

D	ROLLER NOTES, PE ADDRESS	5/27/20
C	REV LOGO & ADDRESS	1/28/13
B	12/15/11	RLB
A	2866 3/10/08	RLB
	2848 11/1/07	RLB
REV.	E.C.N.	DATE: APPROV.

W WINDSOR DOOR

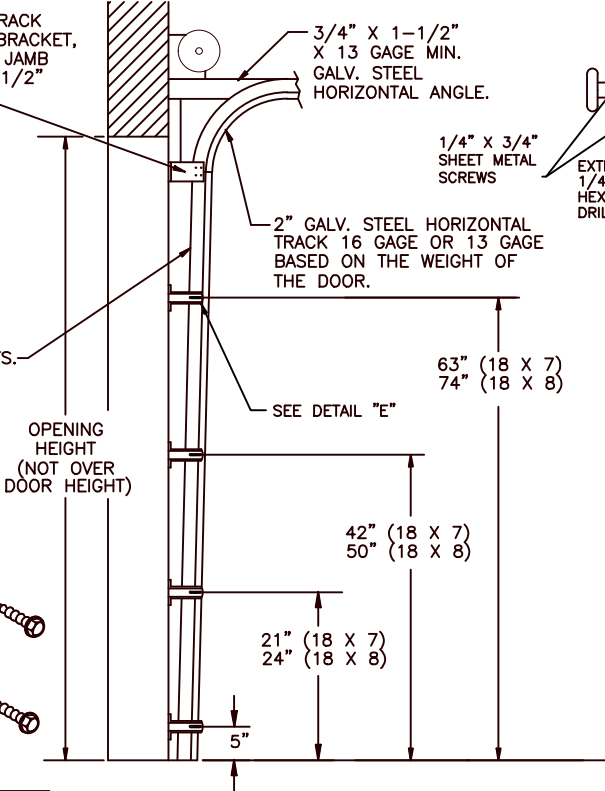
5800 SCOTT HAMILTON DR.
LITTLE ROCK, AR 72209
(501) 562-1872

MODELS: 724, 426, 730, 735, 750, 755			
PART NAME: WINDLOAD RESIDENTIAL PAN DOOR W1 B		TOLERANCE	
FRAC. ± 1/64" DEC. ± .015 ANG. ± 1'	NEXT LEVEL	DATE: 11/1/07	DWG. NO. 99-B-079
SCALE NONE	PLOT SCALE	DRN. BY BH	SHT 2 OF 3

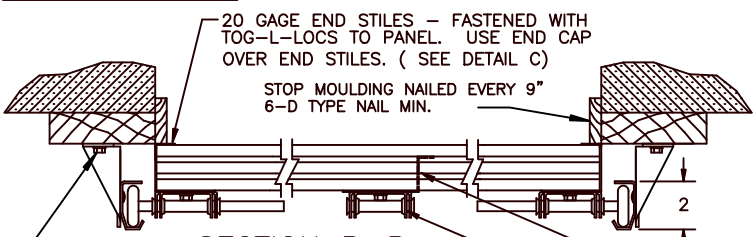
13 GAGE STEEL TRACK SPLICE OR FLAG BRACKET, FASTEN TO WOOD JAMB WITH 5/16" X 1-1/2" LAG SCREWS

2" GALV. STEEL VERTICAL TRACK 16GA BOLTED TO TRACK BRACKETS WITH 1/4"-20 X 5/8" TRACK BOLTS.

OPENING HEIGHT (NOT OVER DOOR HEIGHT)



SECTION B-B



13 GAGE GALV. STEEL WINDLOAD TRACK BRACKETS. SEE ABOVE FOR SPACING. FASTEN TO WOOD JAMBS WITH 5/16" X 1-1/2" LAG SCREWS & WASHERS. PREPARATION OF JAMBS BY OTHERS. SEE DETAIL "E".

20 GAGE GALV. STEEL CENTER STILE TOG-L-LOC OR POP RIVETED TO PANEL.
18 GAGE GALV. STEEL CENTER HINGE RESIDENTIAL FASTENED WITH (4) 1/4" X 3/4" HEX HEAD SHEET METAL SCREWS.

DETAIL E

4 BRACKETS EACH SIDE

3/4" X 1-1/2" X 13 GAGE MIN. GALV. STEEL HORIZONTAL ANGLE.

1/4" X 3/4" SHEET METAL SCREWS

2" GALV. STEEL HORIZONTAL TRACK 16 GAGE OR 13 GAGE BASED ON THE WEIGHT OF THE DOOR.

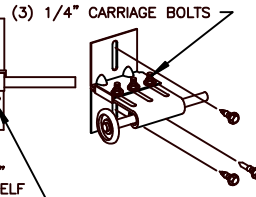
63" (18 X 7)
74" (18 X 8)

42" (18 X 7)
50" (18 X 8)

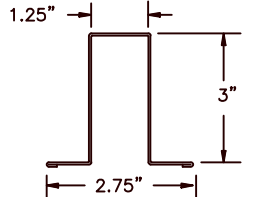
21" (18 X 7)
24" (18 X 8)

5"

SEE DETAIL "E"



DETAIL D



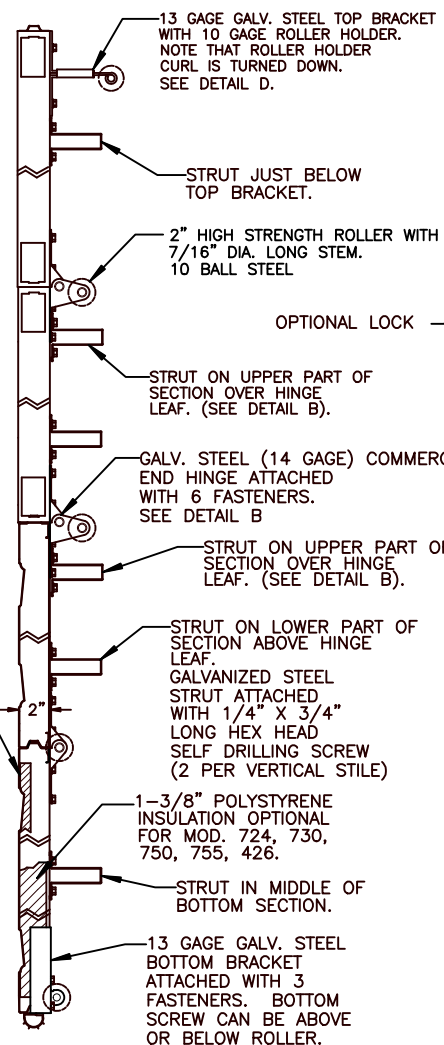
DETAIL A

3" 18GA WIDE STRUT

1/2" POLYSTYRENE INSULATION STANDARD FOR MODEL 735.

21" OR 24" HIGH PANEL GALV. AND PREPAINTED STEEL 25 GAGE ALL MODELS EXCEPT 24 GAGE MODEL 750, 755.

SECTION A-A



6 STRUTS
3" 18GA WIDE (SEE DETAIL A)

13 GAGE GALV. STEEL TOP BRACKET WITH 10 GAGE ROLLER HOLDER. NOTE THAT ROLLER HOLDER CURL IS TURNED DOWN. SEE DETAIL D.

STRUT JUST BELOW TOP BRACKET.

2" HIGH STRENGTH ROLLER WITH 7/16" DIA. LONG STEM. 10 BALL STEEL

OPTIONAL LOCK

STRUT ON UPPER PART OF SECTION OVER HINGE LEAF. (SEE DETAIL B).

GALV. STEEL (14 GAGE) COMMERCIAL END HINGE ATTACHED WITH 6 FASTENERS. SEE DETAIL B

STRUT ON UPPER PART OF SECTION OVER HINGE LEAF. (SEE DETAIL B).

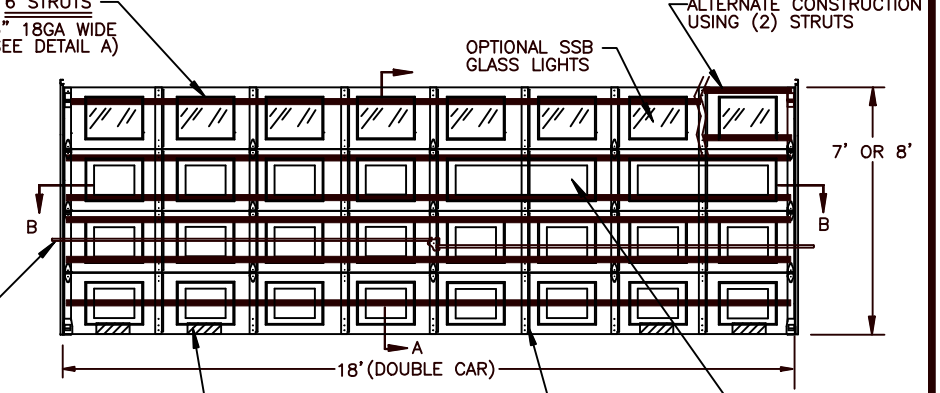
STRUT ON LOWER PART OF SECTION ABOVE HINGE LEAF.

GALVANIZED STEEL STRUT ATTACHED WITH 1/4" X 3/4" LONG HEX HEAD SELF DRILLING SCREW (2 PER VERTICAL STILE)

1-3/8" POLYSTYRENE INSULATION OPTIONAL FOR MOD. 724, 730, 750, 755, 426.

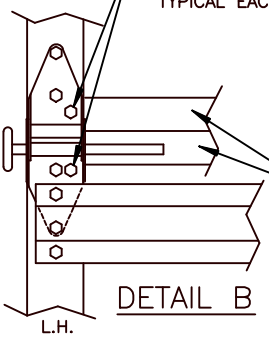
STRUT IN MIDDLE OF BOTTOM SECTION.

13 GAGE GALV. STEEL BOTTOM BRACKET ATTACHED WITH 3 FASTENERS. BOTTOM SCREW CAN BE ABOVE OR BELOW ROLLER.



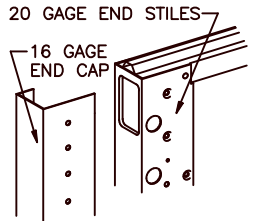
4" X 16" AIR VENTS (4) REQ'D. (120 SQ. INCH MIN. TOTAL OPEN AREA). OPTIONAL.

USE TWO EXTRA SELF DRILLING SCREWS THROUGH HINGE LEAF, END STILE & RAIL AS SHOWN. TYPICAL EACH END HINGE.



DETAIL B

L.H.



DETAIL C

NOTE: DOOR MUST BE INSTALLED WITH EITHER AN ELECTRIC OPERATOR OR A LOCK (MUST ENGAGE BOTH TRACKS ON DOORS WITH EXTENSION SPRINGS).

18' X 7'

18' X 8'

NOTE: GLAZING DOES NOT SATISFY IMPACT DEBRIS REQUIREMENTS IN FBC

FL 15080

P.S.F. TABLE					
DOOR SIZE		DESIGN PRESSURE		TEST PRESSURE	
WIDTH	HEIGHT	POSITIVE	NEGATIVE	POSITIVE	NEGATIVE
18'-0"	7'-0"	+18.7	-20.8	+28.1	-31.2
18'-0"	8'-0"	+18.7	-20.8	+28.1	-31.2

NOTE: ALL NON-DESCRIPTIVE FASTENERS SHOWN TO BE 1/4"-20 X 5/8" HEX BOLTS & NUTS OR 1/4" X 3/4" LONG HEX HEAD SHEET METAL SCREWS.

DOORS SHOWN ON THIS DRAWING HAVE BEEN DEMONSTRATED TO WITHSTAND THE PRESSURES LISTED IN THE TABLE ABOVE VIA TESTING TO ANSI/DASMA 108-05/12/17.

DETERMINATION OF SUITABILITY FOR SPECIFIC SITES IS THE RESPONSIBILITY OF OTHERS.

John E Scates PE
2560 King Arthur Blvd #124-54
Lewisville, TX 75056
TX-PE 56308, F-2203
FL-PE-51737

Professional Engineer's seal provided only for verification of windload construction details.

COMPLIES WITH THE WINDLOAD REQUIREMENTS OF THE IBC/IRC 2018.

D	ROLLER NOTES, PE ADDRESS	5/27/20
C	REV LOGO & ADDRESS	1/28/13
B	12/15/11	RLB
A	2866 3/10/08	RLB
	2848 11/1/07	RLB
REV.	E.C.N.	DATE: APPROV.

W WINDSOR DOOR

5800 SCOTT HAMILTON DR.
LITTLE ROCK, AR 72209
(501) 562-1872

MODELS:
724, 426, 730, 735, 750, 755

PART NAME: WINDLOAD RESIDENTIAL PAN DOOR W1 B		DWG. NO. 99-B-079	
TOLERANCE FRAC. ± 1/64" DEC. ± .015 ANG. ± 1'	DATE: 11/1/07	DRN. BY BH	SHT 3 OF 3
SCALE NONE	PLOT SCALE		