

NOTES:

1. IMPACT RESISTANT GLAZING OPTION- IMPACT RESISTANT GLAZING SYSTEM MAY BE INSTALLED IN TOP OR INTERMEDIATE SECTION (WITH OR WITHOUT DECORATIVE INSERTS). GLAZING SHALL BE 1/4" POLYCARBONATE. MAXIMUM GLAZING DIMENSIONS SHALL BE 11" x 17" CUTOUT, FASTENED WITH #8 X 1" SMS: 3X ALONG THE HORIZONTAL AND 2X ALONG THE VERTICAL. SEE DETAIL J ON SHEET 2 FOR ASSEMBLY DETAILS.

2. VINYL OR WOOD DOOR STOP NAILED A MAXIMUM OF 6" O.C. MUST OVERLAP TOP AND BOTH ENDS OF PANELS MINIMUM 7/16" TO MEET NEGATIVE PRESSURES.

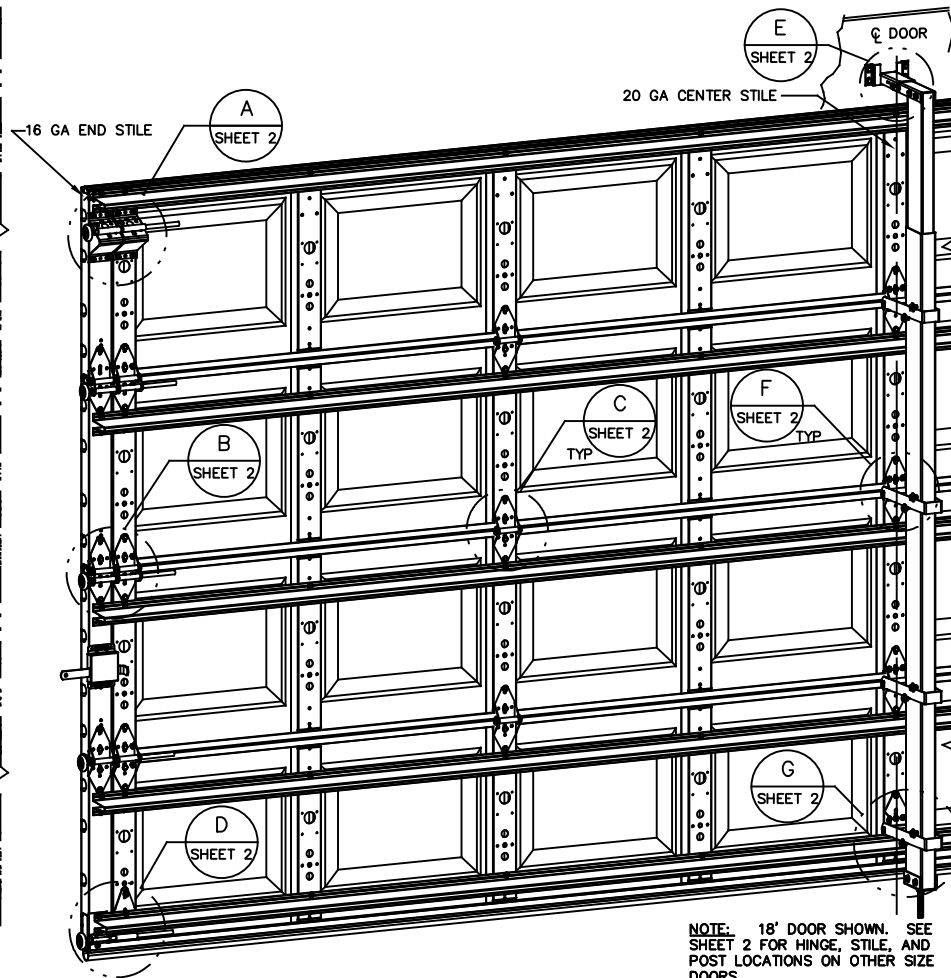
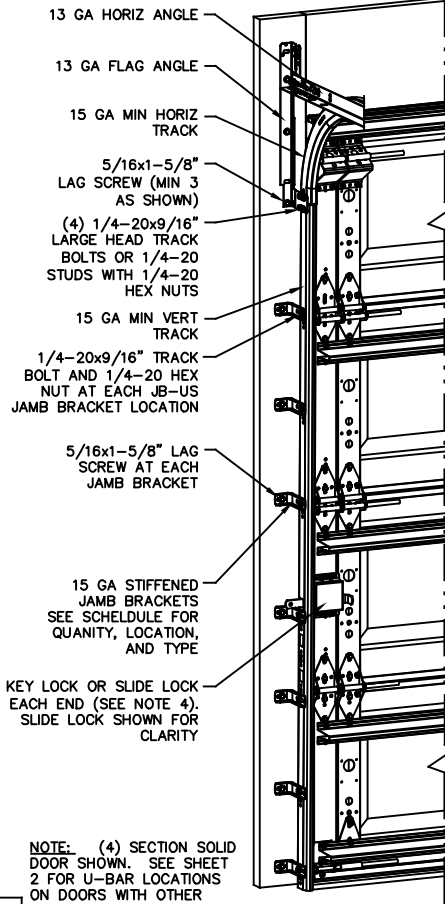
3. KEY LOCK OR SLIDE LOCKS REQUIRED.

4. SECTION STEEL TO HAVE A MINIMUM 25 GA THICKNESS.

5. THE DESIGN OF THE SUPPORTING STRUCTURAL ELEMENTS SHALL BE THE RESPONSIBILITY OF THE PROFESSIONAL OF RECORD FOR THE BUILDING OR STRUCTURE AND IN ACCORDANCE WITH CURRENT BUILDING CODES FOR THE LOADS LISTED ON THIS DRAWING.

6. DOOR JAMB TO BE MINIMUM 2x6, STRUCTURAL GRADE SOUTHERN PINE. REFER TO JAMB CONNECTION SUPPLEMENT FOR ATTACHMENT TO SUPPORTING STRUCTURE.

7. FOR LOW HEAD ROOM LIFT CONDITIONS, TOP BRACKET SHALL BE A 13 GA LHR 7/4 TOP BRACKET WITH A MINIMUM OF (3) 1/4-14x7/8" SELF DRILLING CRIMP TITE SCREWS IN LIEU OF THE BRACKET SHOWN ON THIS DRAWING. U-BAR ON TOP SECTION SHALL BE INSTALLED ON TOP OF LHR TOP BRACKETS.



NOTE: (4) SECTION SOLID DOOR SHOWN. SEE SHEET 2 FOR U-BAR LOCATIONS ON DOORS WITH OTHER SECTION QUANTITIES AND SEE NOTES 1 AND 2 THIS SHEET FOR GLAZING OPTIONS.

NOTE: 18' DOOR SHOWN. SEE SHEET 2 FOR HINGE, STILE, AND POST LOCATIONS ON OTHER SIZE DOORS.

SUPERIMPOSED DESIGN PRESSURE LOADS ON SUPPORTING STRUCTURE

MAX DOOR WIDTH	MAX DOOR HEIGHT	UNIFORM LOAD EACH JAMB (PLF)	POINT LOAD AT HEADER AND SLAB AT EACH POST LOCATION (LBS)
17'-0"	7'-0"	+185.5/-209.6	+1507.4/-1712.9
	8'-0"	+185.5/-209.6	+1704.0/-1936.3
18'-0"	7'-0"	+190.7/-215.7	+1637.0/-1850.5
	8'-0"	+190.7/-215.7	+1860.3/-2102.9

JAMB BRACKET SCHEDULE

DOOR HEIGHT	NO. OF SECTIONS	NO. OF JAMB BRACKETS (EACH JAMB)	LOCATION OF CENTERLINE OF JAMB BRACKETS MEASURED FROM BOTTOM OF TRACK (ALL DIMENSIONS ± 2")
6'-6"	4	7	2" (JB-US), 10" (JB-US), 21-3/4" (JB-US), 29-3/4" (JB-US), 39" (JB-US), 48" (JB-US), 57-1/4" (JB-US)
7'-0"	4	7	2" (JB-US), 10" (JB-US), 21-3/4" (JB-US), 29-3/4" (JB-US), 42" (JB-US), 52-1/2" (JB-US), 63-1/4" (JB-US)
7'-6"	5	9	2" (JB-US), 10" (JB-US), 18-3/4" (JB-US), 26-3/4" (JB-US), 36" (JB-US), 45" (JB-US), 54-1/4" (JB-US), 63" (JB-US), 74-1/2" (JB-US)
8'-0"	5	9	2" (JB-US), 10" (JB-US), 21-3/4" (JB-US), 29-3/4" (JB-US), 39" (JB-US), 48" (JB-US), 57-1/2" (JB-US), 66" (JB-US), 75-1/2" (JB-US)

NOTE: (JB-US) FOLLOWING DIMENSION DENOTES SLOTTED JAMB BRACKET ATTACHED TO TRACK WITH 1/4-20x9/16" TRACK BOLT AND NUT AS SHOWN ABOVE.

REVISIONS

- P1 MODIFIED NOTES TO STATE THAT LOUVERS ARE NOT IMPACT RESISTANT. INCREASED DESIGN PRESSURES TO +46.00/-52.00. GRT 6/29/07
- P2 ADDED IMPACT RESISTANT GLAZING. ADDED DETAIL J SHEET 2 FOR GLAZING. REMOVED CONCRETE SPECIFICATION FROM NOTES AND ADDED DETAIL H SHEET 2 FOR CONCRETE SPECIFICATION. ADDED MAX GLAZING DIMENSION TO NOTES SHEET 1. MODIFIED JAMB BRACKET SCHEDULE. ADDED TRACK TO FLAG CONNECTION NOTE. MODIFIED SUPERIMPOSED DESIGN PRESSURE LOAD CHART. GRT 11/10/07
- P3 MODIFIED LOUVER OPTION. ADDED TEXAS LICENSE NUMBER TO TITLE BLOCK. GRT 9/19/08
- P4 UPDATED TITLE BLOCK AND IMPACT GLAZING GRT 4/16/12
- P5 UPDATED TITLE BLOCK ESC 10/3/17
- P6 UPDATED TITLE BLOCK, REV PER ER 31052 ESC 5/31/18



A DIVISION OF OVERHEAD DOOR CORP
3395 ADDISON DRIVE
PENSACOLA, FLORIDA 32514
(850) 474-9890

STATIC PRESSURE RATINGS		APPROVED SIZES	SCALE: N.T.S.	SIZE: A
DESIGN (PSF):	+46.00/-52.00	MAX WIDTH: 18'-0"	DATE	NAME
TEST (PSF):	+69.00/-78.00	MAX HEIGHT: 8'-0"	DRAWN	GRT
IMPACT/CYCLIC RATED (YES/NO): YES		MAX SECTION HEIGHT: 21"	CHECKED	MRB
MODELS 8000/8100/8200			SHEET 1 OF 2	
WINDLOAD SPECIFICATION OPTION CODE 1144			DRAWING PART NO.	REV.
			327024	P6

JOHN E. SCATES, PE
2580 KING ARTHUR BLVD #124-54
LEWISVILLE, TX 75056
FL PE 51737
TX PE 56308/F2203

PROFESSIONAL ENGINEER'S SEAL PROVIDED ONLY FOR VERIFICATION OF WINDLOAD CONSTRUCTION DETAILS.

REVISIONS

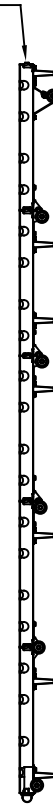
- P1 MODIFIED NOTES TO STATE THAT LOUVERS ARE NOT IMPACT RESISTANT. INCREASED DESIGN PRESSURES TO +46.00/-52.00. GRT 6/29/07
- P2 ADDED IMPACT RESISTANT GLAZING. ADDED DETAIL J SHEET 2 FOR GLAZING. REMOVED CONCRETE SPECIFICATION FROM NOTES AND ADDED DETAIL H SHEET 2 FOR CONCRETE SPECIFICATION. ADDED MAX GLAZING DIMENSION TO NOTES SHEET 1. MODIFIED JAMB BRACKET SCHEDULE. ADDED TRACK TO FLAG CONNECTION NOTE. MODIFIED SUPERIMPOSED DESIGN PRESSURE LOAD CHART. GRT 11/10/07
- P3 MODIFIED LOUVER OPTION. ADDED TEXAS LICENSE NUMBER TO TITLE BLOCK. GRT 9/19/08
- P4 UPDATED TITLE BLOCK AND IMPACT GLAZING GRT 4/16/12
- P5 UPDATED TITLE BLOCK ESC 10/3/17
- P6 UPDATED TITLE BLOCK, REV PER ER 31052 ESC 5/31/18

U-BAR LOCATIONS

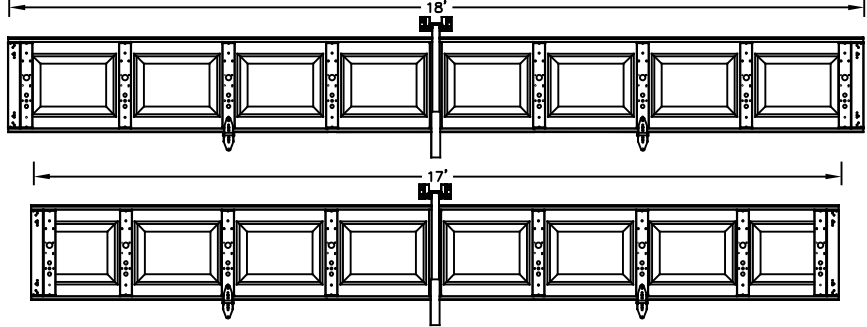
(5) SECTION DOORS WITH
(7) 3" 20 GA 80 KSI U-BARS
LOCATED AS SHOWN

(4) SECTION DOORS WITH
(5) 3" 20 GA 80 KSI U-BARS
LOCATED AS SHOWN

ATTACH U-BAR WITH
(2) 1/4-14x7/8" SELF
DRILLING CRIMPITITE SCREWS
AT EACH STILE LOCATION, TYP.



CENTER STILE INTERMEDIATE HINGE & POST LOCATIONS



13 GA ROLLER SLIDE ATTACHED TO BRACKET WITH 5/16-18 BOLT & NUT IN CENTER SLOT AND 1/4-20x9/16" TRACK BOLT & 1/4-14x7/8" SELF DRILLING CRIMPITITE SCREWS

(2) 13 GA COMMERCIAL 'A' FRAME TOP BRACKETS EACH ATTACHED WITH (4) 1/4-14x7/8" SELF DRILLING CRIMPITITE SCREWS

ADD (2) 1/4-14x7/8" SELF DRILLING CRIMPITITE SCREWS (INSIDE OF EACH INSIDE END HINGE)

2" STEEL ROLLER WITH 9" GRADE 1144 OR EQUIVALENT STEM

(2) 14 GA WIDE BODY END HINGES EACH ATTACHED WITH (4) 1/4-14x5/8" SELF TAPPING SCREWS

14 GA WIDE BODY INTERMEDIATE HINGE ATTACHED WITH (4) 1/4-14x5/8" SELF TAPPING SCREWS

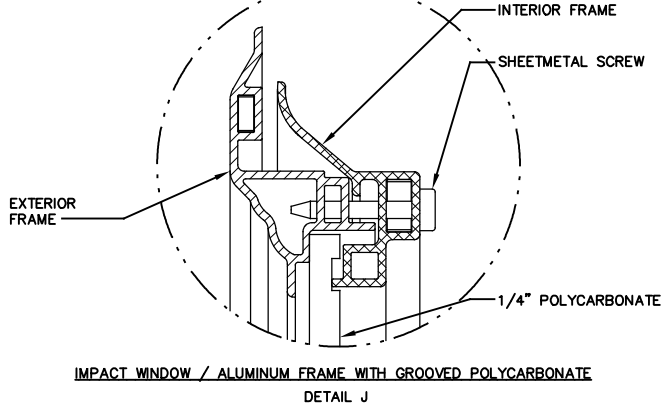
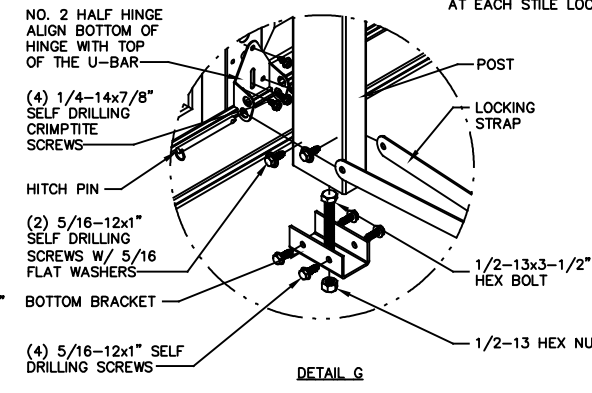
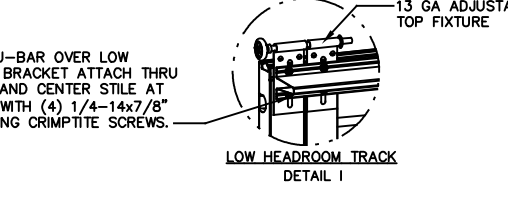
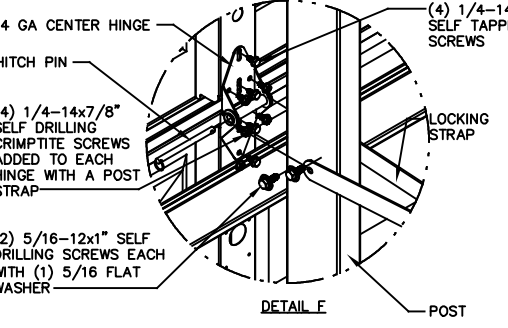
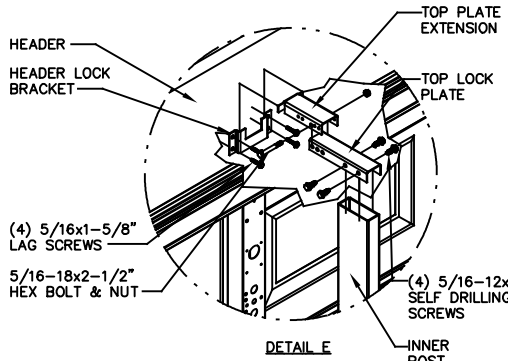
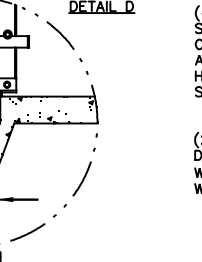
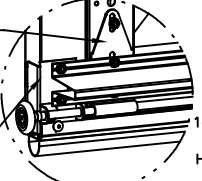
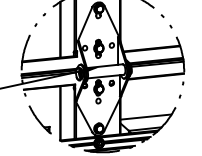
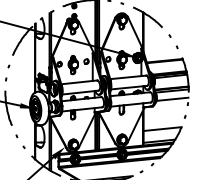
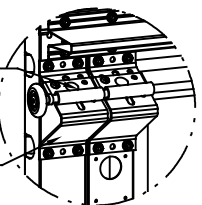
12 GA EXTENSION BRACKET ATTACHED WITH (3) 1/4-14x7/8" SELF DRILLING CRIMPITITE SCREWS (2 THROUGH STRUT AND BRACKET)

14 GA BOTTOM BRACKET ATTACHED WITH (2) 1/4-14x7/8" SELF DRILLING CRIMPITITE SCREWS THROUGH STRUT AND BOTTOM BRACKET AND (1) 1/4-14x5/8" SELF DRILLING RED SCREW

2500 PSI MIN CONCRETE

8" X 8" MIN TURNDOWN SLAB AT EDGE

8" MIN EDGE DISTANCE



DETAIL A

DETAIL B

DETAIL C

DETAIL D

DETAIL H

DETAIL E

DETAIL F

DETAIL I

DETAIL G

DETAIL J

HEADER
HEADER LOCK BRACKET
TOP LOCK PLATE
TOP PLATE EXTENSION
(4) 5/16x1-5/8" LAG SCREWS
5/16-18x2-1/2" HEX BOLT & NUT
(4) 5/16-12x1" SELF DRILLING SCREWS
INNER POST

14 GA CENTER HINGE
HITCH PIN
(4) 1/4-14x7/8" SELF DRILLING CRIMPITITE SCREWS ADDED TO EACH HINGE WITH A POST STRAP
LOCKING STRAP
POST
(4) 1/4-14x5/8" SELF TAPPING SCREWS
(2) 5/16-12x1" SELF DRILLING SCREWS EACH WITH (1) 5/16 FLAT WASHER

13 GA ADJUSTABLE TOP FIXTURE
LOW HEADROOM TRACK
DETAIL I

NO. 2 HALF HINGE ALIGN BOTTOM OF HINGE WITH TOP OF THE U-BAR
(4) 1/4-14x7/8" SELF DRILLING CRIMPITITE SCREWS
HITCH PIN
(2) 5/16-12x1" SELF DRILLING SCREWS W/ 5/16 FLAT WASHERS
BOTTOM BRACKET
(4) 5/16-12x1" SELF DRILLING SCREWS
POST
LOCKING STRAP
1/2-13x3-1/2" HEX BOLT
1/2-13 HEX NUT

EXTERIOR FRAME
INTERIOR FRAME
SHEETMETAL SCREW
1/4" POLYCARBONATE

PLACE 3" U-BAR OVER LOW HEADROOM BRACKET ATTACH THRU END STILE AND CENTER STILE AT EACH END WITH (4) 1/4-14x7/8" SELF DRILLING CRIMPITITE SCREWS.

IMPACT WINDOW / ALUMINUM FRAME WITH GROOVED POLYCARBONATE

PROFESSIONAL ENGINEER'S SEAL PROVIDED ONLY FOR VERIFICATION OF WINDLOAD CONSTRUCTION DETAILS.

JOHN E. SCATES, PE
2580 KING ARTHUR BLVD #124-54
LEWISVILLE, TX 75066
FL PE 51737
TX PE 56308/F2203

Wayne Dalton
GARAGE DOORS

A DIVISION OF OVERHEAD DOOR CORP
3395 ADDISON DRIVE
PENSACOLA, FLORIDA 32514
(850) 474-9890

STATIC PRESSURE RATINGS		APPROVED SIZES		SCALE: N.T.S.	SIZE: A
DESIGN (PSF):	+46.00/-52.00	MAX WIDTH:	18'-0"	DATE	NAME
TEST (PSF):	+69.00/-78.00	MAX HEIGHT:	8'-0"	DRAWN	GRT
IMPACT/CYCLIC RATED (YES/NO):	YES	MAX SECTION HEIGHT:	21'	CHECKED	MRB
MODELS 8000/8100/8200				SHEET 2 OF 2	
WINDLOAD SPECIFICATION OPTION CODE 1144				DRAWING PART NO.	REV.
				327024	P6