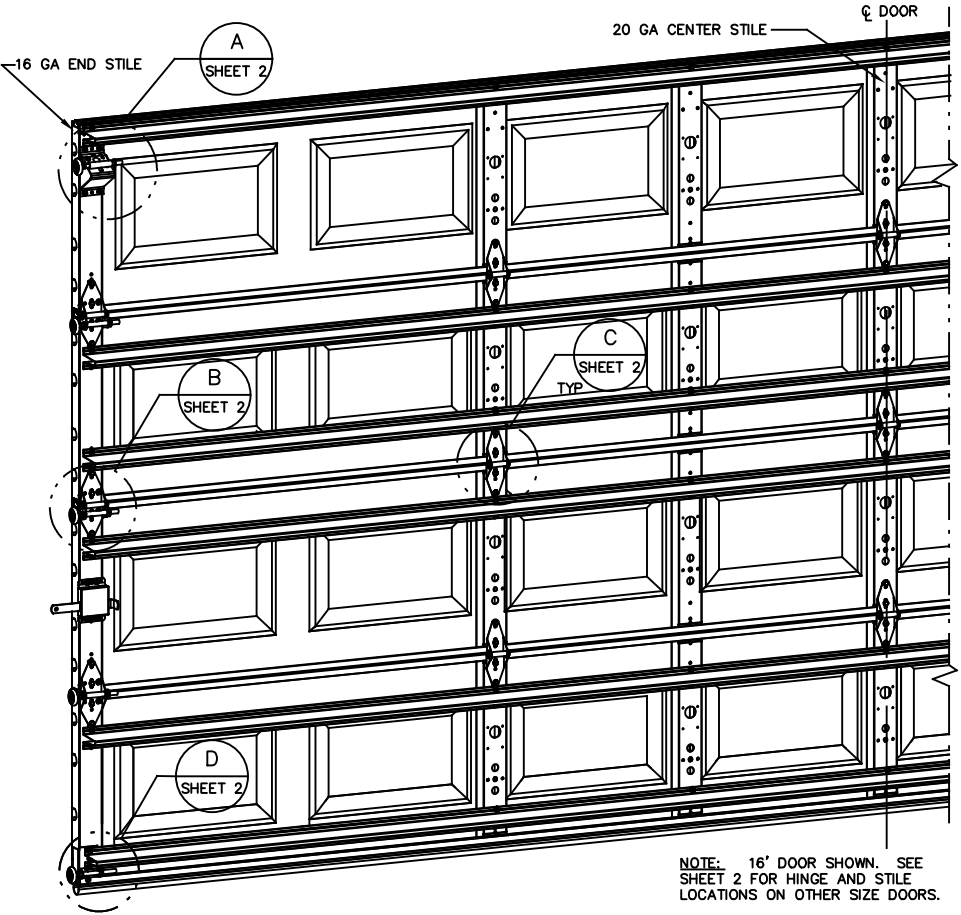
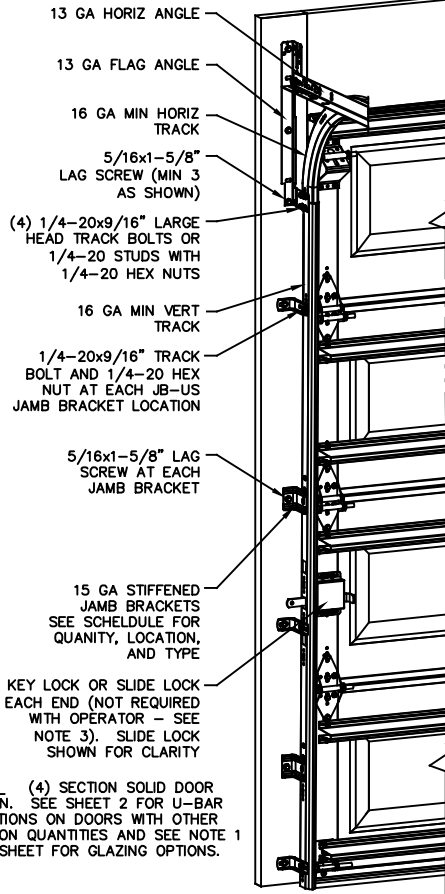


**NOTES:**

- NON IMPACT GLAZING OPTIONS:
  - 16 X 9.75 CLEAR OPENING INSTALLED TOP OR INTERMEDIATE SECTION.
  - 36.75 X 9.75 CLEAR OPENING INSTALLED IN TOP SECTION ONLY.
 GLAZING SSB (0.090") MINIMUM. MAY INCLUDE DECORATIVE INSERTS NOT AVAILABLE IN MORE THAN ONE SECTION. DOES NOT SATISFY WINDBORNE-DEBRIS.
- IMPACT GLAZING OPTION:
 16.75 X 9.75 CLEAR OPENING GLAZING 1/4" GROOVED POLYCARBONATE ALUMINUM FRAMES WITH 10 SCREWS MAY INCLUDE DECORATIVE INSERTS INSTALLED IN TOP OR INTERMEDIATE SECTION. NOT AVAILABLE IN MORE THAN ONE SECTION. SEE ASSEMBLY DETAIL ON SHEET 2.
- VINYL OR WOOD DOOR STOP NAILED A MAXIMUM OF 6" O.C. MUST OVERLAP TOP AND BOTH ENDS OF PANELS MINIMUM 7/16" TO MEET NEGATIVE PRESSURES.
- KEY LOCK, SLIDE LOCKS, OR OPERATOR REQUIRED.
- LOUVER OPTION - .032" MINIMUM LOUVERS IN MOLDED FRAMES SCREWED TOGETHER WITH A MINIMUM OF (10) #8x1" SCREWS INSTALLED IN THE BOTTOM SECTION. LOUVERS ARE NOT IMPACT RESISTANT AND DO NOT MEET THE REQUIREMENTS FOR WIND-BORNE DEBRIS REGIONS.
- SECTION STEEL TO HAVE A MINIMUM 25 GA THICKNESS.
- THE DESIGN OF THE SUPPORTING STRUCTURAL ELEMENTS SHALL BE THE RESPONSIBILITY OF THE PROFESSIONAL OF RECORD FOR THE BUILDING OR STRUCTURE AND IN ACCORDANCE WITH CURRENT BUILDING CODES FOR THE LOADS LISTED ON THIS DRAWING.
- DOOR JAMB TO BE MINIMUM 2" X 6", GRADE 2 SOUTHERN PINE. REFER TO JAMB CONNECTION SUPPLEMENT FOR ATTACHMENT TO SUPPORTING STRUCTURE.
- FOR LOW HEAD ROOM LIFT CONDITIONS, TOP BRACKET SHALL BE A 13 GA LHR 7/4 TOP BRACKET WITH A MINIMUM OF (3) 1/4-14x7/8" SELF DRILLING CRIMPITE SCREWS IN LIEU OF THE BRACKET SHOWN ON THIS DRAWING. U-BAR ON TOP SECTION SHALL BE INSTALLED ON TOP OF LHR TOP BRACKETS.



NOTE: 16' DOOR SHOWN. SEE SHEET 2 FOR HINGE AND STILE LOCATIONS ON OTHER SIZE DOORS.

DOOR WIDTH	DOOR HEIGHT	UNIFORM LOAD EACH JAMB (PLF)
10'-0"	ALL	+115.0/-125.0
12'-0"	ALL	+138.0/-150.0
14'-0"	ALL	+161.0/-175.0
15'-0"	ALL	+172.5/-187.5
16'-0"	ALL	+184.0/-200.0

DOOR HEIGHT	NO. OF SECTIONS	NO. OF JAMB BRACKETS (EACH JAMB)	TRACK TYPE	LOCATION OF CENTERLINE OF JAMB BRACKETS MEASURED FROM BOTTOM OF TRACK (ALL DIMENSIONS ± 2")
6'-6"	4	4	QI	14" (QI), 34" (JB-US), 44" (QI), 56" (JB-US)
6'-6"	4	4	FAT	10" (JB-US), 25-3/4" (JB-US), 39" (JB-US), 57-1/4" (JB-US)
7'-0"	4	5	QI	2" (JB-US), 14" (QI), 29-1/2" (JB-US), 44" (QI), 63-1/4" (JB-US)
7'-0"	4	5	FAT	2" (JB-US), 10" (JB-US), 29-3/4" (JB-US), 42" (JB-US), 63-1/4" (JB-US)
7'-6"	5	6	QI	2" (JB-US), 14" (QI), 28-1/2" (JB-US), 43" (QI), 62-1/2" (QI), 72" (JB-US)
7'-6"	5	6	FAT	2" (JB-US), 10" (JB-US), 26-3/4" (JB-US), 45" (JB-US), 63" (JB-US), 74-1/2" (JB-US)
8'-0"	5	6	QI	2" (JB-US), 14" (QI), 34" (JB-US), 46" (QI), 58" (JB-US), 66-1/2" (QI)
8'-0"	5	6	FAT	2" (JB-US), 10" (JB-US), 29-3/4" (JB-US), 48" (JB-US), 57-1/2" (JB-US), 77-1/2" (JB-US)
> 8'-0"				SEE NOTE BELOW

NOTE:  
(JB-US) FOLLOWING DIMENSION DENOTES SLOTTED JAMB BRACKET ATTACHED TO TRACK WITH 1/4-20x9/16" TRACK BOLT AND NUT.  
(QI) FOLLOWING DIMENSION DENOTES QUICK INSTALL JAMB BRACKET INSTALLED IN BUTTERFLY SLOT. NO ADDITIONAL HARDWARE NEEDED TO ATTACH TO TRACK.  
ALL DOORS GREATER THAN 8' IN HEIGHT REQUIRE USE OF CONTINUOUS WALL ANGLE. SEE SUPPLEMENT TRACK CHART FOR DETAILS.

**REVISIONS**

- P1 MODIFIED NOTES TO STATE THAT LOUVERS ARE NOT IMPACT RESISTANT. GRT 6/29/07
- P2 MODIFIED JAMB BRACKET SCHEDULE ALLOWING REPLACEMENT OF QI WITH JB-US. ADDED MAX GLAZING DIMENSION TO NOTES SHEET 1. GRT 11/10/07
- P3 MODIFIED LOUVER OPTION. ADDED TEXAS LICENSE NUMBER TO TITLE BLOCK. GRT 9/19/08
- P4 UPDATED TITLE BLOCK GRT 4/16/12
- P5 ADDED NON-IMPACT GLAZING NOTE 1. ESC 11/8/16
- P6 UPDATED TITLE BLOCK ESC 10/3/17
- P7 UPDATED TITLE BLOCK, REV PER ER 31052 ESC 9/25/18
- P8 UPDATED NOTES ADDED LHR DETAIL ER 31052 ESC 2/12/19

PROFESSIONAL ENGINEER'S SEAL PROVIDED ONLY FOR VERIFICATION OF WINDLOAD CONSTRUCTION DETAILS.

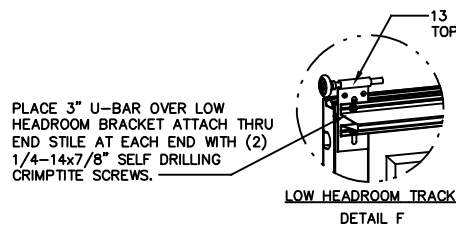
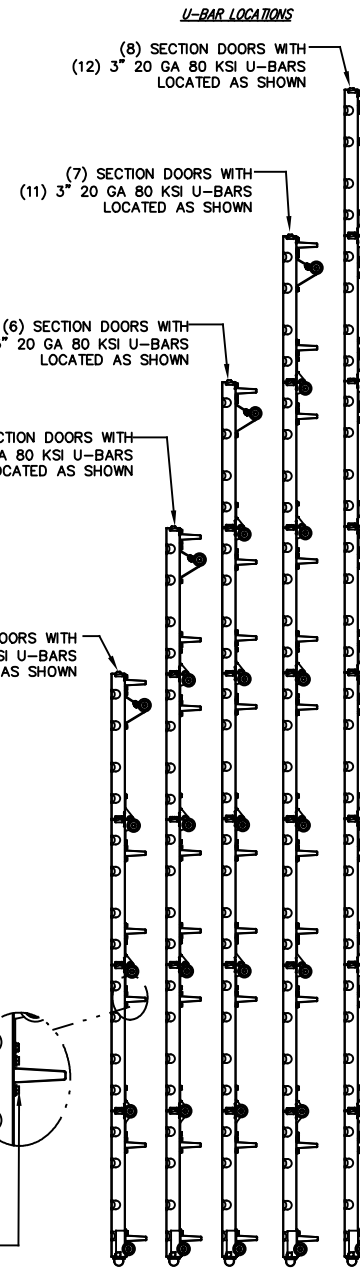
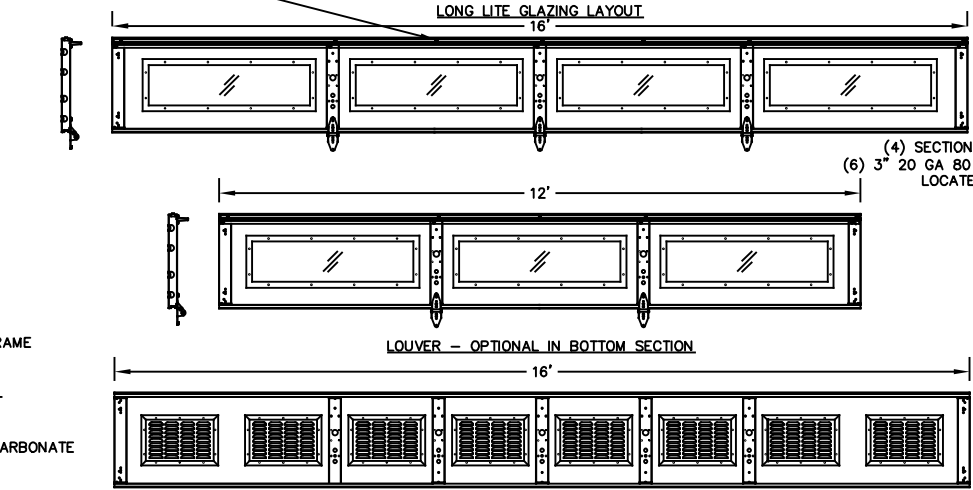
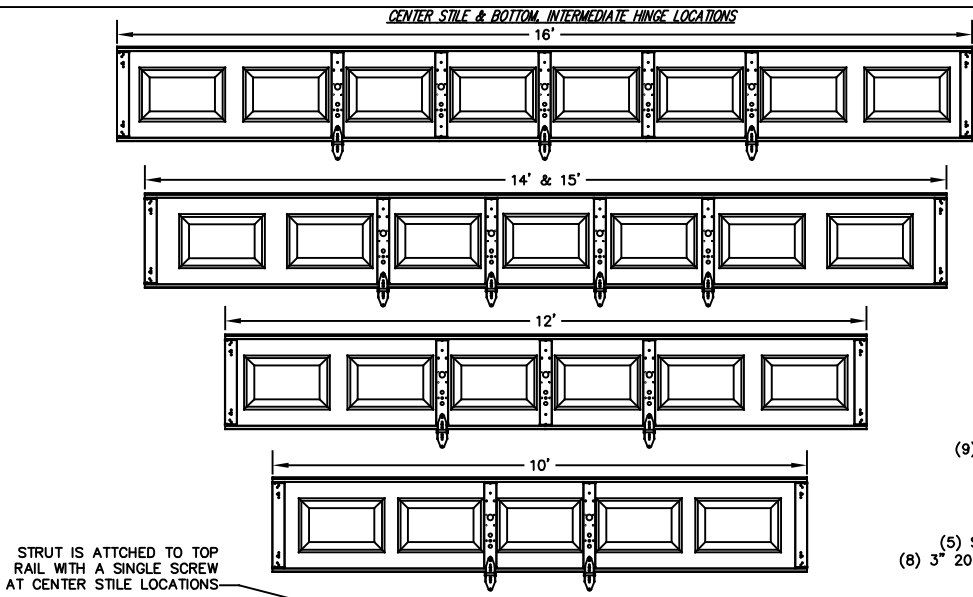
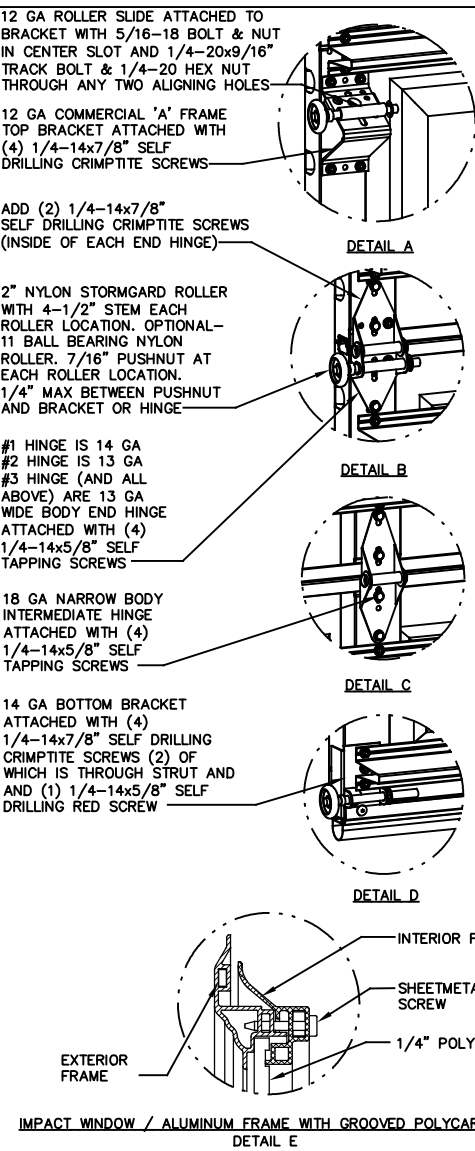
JOHN E. SCATES, PE  
2560 KING ARTHUR BLVD #124-54  
LEWISVILLE, TX 75056  
FL PE 51737  
TX PE 56308/F2203

**Wayne Dalton**  
GARAGE DOORS™  
A DIVISION OF OVERHEAD DOOR CORP.  
3395 ADDISON DRIVE  
PENSACOLA, FLORIDA 32514  
(850) 474-9890

STATIC PRESSURE RATINGS		APPROVED SIZES		SCALE: N.T.S.	SIZE: A
DESIGN (PSF):	+23.00/-25.00	MAX WIDTH:	16'-0"	DATE	NAME
TEST (PSF):	+34.50/-37.50	MAX HEIGHT:	14'-0"	DRAWN	GRT
IMPACT/CYCLIC RATED (YES/NO):	YES	MAX SECTION HEIGHT:	21"	CHECKED	MRB
MODELS 8000/8100/8200				SHEET 1 OF 2	
WINDLOAD SPECIFICATION OPTION CODE 1122				DRAWING PART NO.	REV.
				327016	P8

REVISIONS

- P1 MODIFIED NOTES TO STATE THAT LOUVERS ARE NOT IMPACT RESISTANT. GRT 6/29/07
- P2 MODIFIED JAMB BRACKET SCHEDULE ALLOWING REPLACEMENT OF Q1 WITH JB-US. ADDED MAX GLAZING DIMENSION TO NOTES SHEET 1. ADDED TRACK TO FLAG CONNECTION NOTE. GRT 11/10/07
- P3 MODIFIED LOUVER OPTION. ADDED TEXAS LICENSE NUMBER TO TITLE BLOCK. GRT 9/19/08
- P4 UPDATED TITLE BLOCK GRT 4/16/12
- P5 ADDED NON-IMPACT GLAZING NOTE 1. ESC 11/8/16
- P6 UPDATED TITLE BLOCK ESC 10/3/17
- P7 UPDATED TITLE BLOCK, REV PER ER 31052 ESC 9/25/18
- P8 UPDATED NOTES ADDED LHR DETAIL ER 31052 ESC 2/12/19



ATTACH U-BAR WITH (2) 1/4-14x7/8" SELF DRILLING CRIMPITTE SCREWS AT EACH STILE LOCATION, TYP.

PROFESSIONAL ENGINEER'S SEAL PROVIDED ONLY FOR VERIFICATION OF WINDLOAD CONSTRUCTION DETAILS.

JOHN E. SCATES, PE  
2560 KING ARTHUR BLVD #124-54  
LEWISVILLE, TX 75056  
FL PE 51737  
TX PE 56308/F2203

**Wayne Dalton**  
GARAGE DOORS™

A DIVISION OF OVERHEAD DOOR CORP.  
3395 ADDISON DRIVE  
PENSACOLA, FLORIDA 32514  
(850) 474-9890

STATIC PRESSURE RATINGS		APPROVED SIZES		SCALE: N.T.S.		SIZE: A	
DESIGN (PSF):	+23.00/-25.00	MAX WIDTH:	16'-0"	DATE	NAME		
TEST (PSF):	+34.50/-37.50	MAX HEIGHT:	14'-0"	DRAWN	GRT		
IMPACT/CYCLIC RATED (YES/NO):	YES	MAX SECTION HEIGHT:	21"	CHECKED	MRB		
MODELS 8000/8100/8200				SHEET 2 OF 2			
WINDLOAD SPECIFICATION OPTION CODE 1122				DRAWING PART NO.		REV.	
				327016		P8	