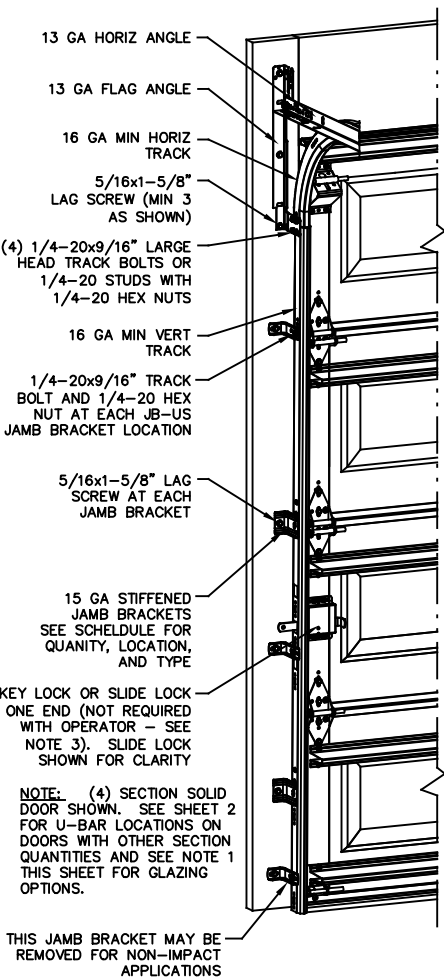
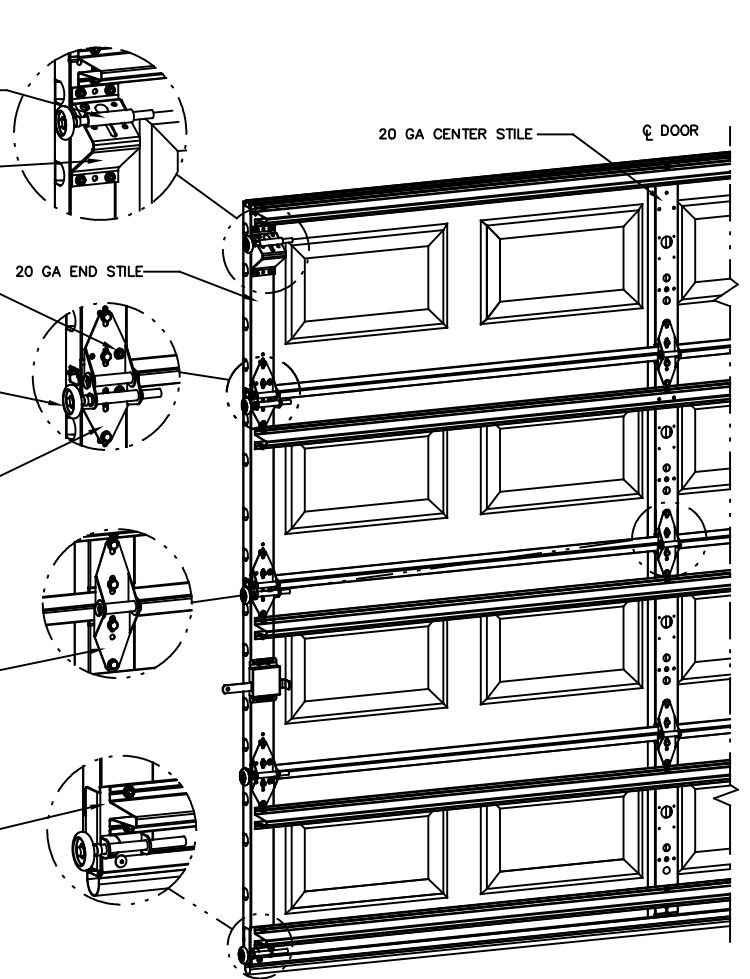


- NOTES:**
- NON IMPACT GLAZING OPTIONS:**  
16 X 9.75 CLEAR OPENING  
36.75 X 9.75 CLEAR OPENING  
GLAZING SSB (0.090") MINIMUM.  
MAY INCLUDE DECORATIVE INSERTS  
INSTALLED IN TOP OR INTERMEDIATE SECTION.  
NOT AVAILABLE IN MORE THAN ONE SECTION.  
DOES NOT SATISFY WINDBORNE-DEBRIS.
  - IMPACT GLAZING OPTION:**  
16.75 X 9.75 CLEAR OPENING  
GLAZING 1/4" GROOVED POLYCARBONATE  
ALUMINUM FRAMES WITH 10 SCREWS MAY  
INCLUDE DECORATIVE INSERTS INSTALLED IN  
TOP OR INTERMEDIATE SECTION.  
NOT AVAILABLE IN MORE THAN ONE SECTION.  
SEE ASSEMBLY DETAIL ON SHEET 2.
  - VINYL OR WOOD DOOR STOP NAILED A  
MAXIMUM OF 6" O.C. MUST OVERLAP TOP AND  
BOTH ENDS OF PANELS MINIMUM 7/16" TO  
MEET NEGATIVE PRESSURES.**
  - KEY LOCK, SLIDE LOCK, OR OPERATOR  
REQUIRED.**
  - LOUVER OPTION - .032" MINIMUM LOUVERS  
IN MOLDED FRAMES SCREWED TOGETHER WITH  
A MINIMUM OF (10) #8x1" SCREWS INSTALLED  
IN THE BOTTOM SECTION. LOUVERS ARE NOT  
IMPACT RESISTANT AND DO NOT MEET THE  
REQUIREMENTS FOR WIND-BORNE DEBRIS  
REGIONS.**
  - SECTION STEEL TO HAVE A MINIMUM 25 GA  
THICKNESS.**
  - THE DESIGN OF THE SUPPORTING  
STRUCTURAL ELEMENTS SHALL BE THE  
RESPONSIBILITY OF THE PROFESSIONAL OF  
RECORD FOR THE BUILDING OR STRUCTURE  
AND IN ACCORDANCE WITH CURRENT BUILDING  
CODES FOR THE LOADS LISTED ON THIS  
DRAWING.**
  - DOOR JAMB TO BE GRADE 2 SOUTHERN  
PINE. REFER TO JAMB CONNECTION  
SUPPLEMENT FOR ATTACHMENT TO  
SUPPORTING STRUCTURE.**
  - FOR LOW HEAD ROOM LIFT CONDITIONS, TOP  
BRACKET SHALL BE A 13 GA HORIZ 7/4 TOP  
BRACKET WITH A MINIMUM OF (3)  
1/4-14x7/8" SELF DRILLING CRIMPITITE  
SCREWS IN LIEU OF THE BRACKET SHOWN ON  
THIS DRAWING. U-BAR ON TOP SECTION SHALL  
BE INSTALLED ON TOP OF LHR TOP BRACKETS.**



- 13 GA ROLLER SLIDE ATTACHED TO BRACKET WITH 5/16-18 BOLT & NUT IN CENTER SLOT AND 1/4-20x9/16" TRACK BOLT & 1/4-20 HEX NUT THROUGH ANY TWO ALIGNING HOLES
- 12 GA COMMERCIAL 'A' FRAME TOP BRACKET ATTACHED WITH (4) 1/4-14x7/8" SELF DRILLING CRIMPITITE SCREWS
- ADD (2) 1/4-14x7/8" SELF DRILLING CRIMPITITE SCREWS (INSIDE OF EACH END HINGE)
- 2" NYLON STORMGARD ROLLER WITH 4-1/2" STEM EACH ROLLER LOCATION. OPTIONAL- 11 BALL BEARING NYLON ROLLER
- #1 HINGE IS 14 GA  
#2 HINGE IS 13 GA  
#3 HINGE (AND ALL ABOVE) ARE 13 GA HINGE ATTACHED WITH (4) 1/4-14x5/8" SELF TAPPING SCREWS
- 18 GA NARROW BODY INTERMEDIATE HINGE ATTACHED WITH (4) 1/4-14x5/8" SELF TAPPING SCREWS
- 14 GA BOTTOM BRACKET ATTACHED WITH (2) 1/4-14x7/8" SELF DRILLING CRIMPITITE SCREWS AND (1) 1/4-14x5/8" SELF DRILLING RED SCREW. (12 GA FOR IMPACT RATED ONLY)



**REVISIONS**

PO NEW DRAWING, PER ER 31052  
ESC 10/12/18

P1 UPDATED NOTES  
ADDED LHR DETAIL ER 31052  
ESC 2/12/19

REV B ADDED IRC/IBC  
NOTE  
TLC 4/12/21

**SUPERIMPOSED DESIGN PRESSURE LOADS ON SUPPORTING STRUCTURE**

DOOR WIDTH	DOOR HEIGHT	UNIFORM LOAD EACH JAMB (PLF)
8'-0"	ALL	+107.6/-123.2
9'-0"	ALL	+121.1/-138.6

**JAMB BRACKET SCHEDULE**

DOOR HEIGHT	NO. OF SECTIONS	NO. OF JAMB BRACKETS (EACH JAMB)	TRACK TYPE	LOCATION OF CENTERLINE OF JAMB BRACKETS MEASURED FROM BOTTOM OF TRACK (ALL DIMENSIONS ± 2")
6'-6"	4	5	QI	2" (JB-US), 14" (QI), 34" (JB-US), 44" (QI), 56" (JB-US)
6'-6"	4	5	FAT	2" (JB-US), 10" (JB-US), 25-3/4" (JB-US), 39" (JB-US), 57-1/4" (JB-US)
7'-0"	4	5	QI	2" (JB-US), 14" (QI), 29-1/2" (JB-US), 44" (QI), 63-1/4" (JB-US)
7'-0"	4	5	FAT	2" (JB-US), 10" (JB-US), 29-3/4" (JB-US), 42" (JB-US), 63-1/4" (JB-US)
7'-6"	5	6	QI	2" (JB-US), 14" (QI), 28-1/2" (JB-US), 43" (QI), 62-1/2" (QI), 72" (JB-US)
7'-6"	5	6	FAT	2" (JB-US), 10" (JB-US), 26-3/4" (JB-US), 45" (JB-US), 63" (JB-US), 74-1/2" (JB-US)
8'-0"	5	6	QI	2" (JB-US), 14" (QI), 34" (JB-US), 46" (QI), 58" (JB-US), 66-1/2" (QI)
8'-0"	5	6	FAT	2" (JB-US), 10" (JB-US), 29-3/4" (JB-US), 48" (JB-US), 57-1/2" (JB-US), 77-1/2" (JB-US)
> 8'-0"				SEE NOTE BELOW

**NOTE:**  
(JB-US) FOLLOWING DIMENSION DENOTES SLOTTED JAMB BRACKET ATTACHED TO TRACK WITH 1/4-20x9/16" TRACK BOLT AND NUT.  
(QI) FOLLOWING DIMENSION DENOTES QUICK INSTALL JAMB BRACKET INSTALLED IN BUTTERFLY SLOT. NO ADDITIONAL HARDWARE NEEDED TO ATTACH TO TRACK.  
ALL DOORS GREATER THAN 8' IN HEIGHT REQUIRE USE OF CONTINUOUS WALL ANGLE. SEE SUPPLEMENT TRACK CHART FOR DETAILS.

COMPLIES WITH THE REQUIREMENTS OF IBC/IRC 2018.

PROFESSIONAL ENGINEER'S SEAL PROVIDED ONLY FOR VERIFICATION OF WINDLOAD CONSTRUCTION DETAILS.

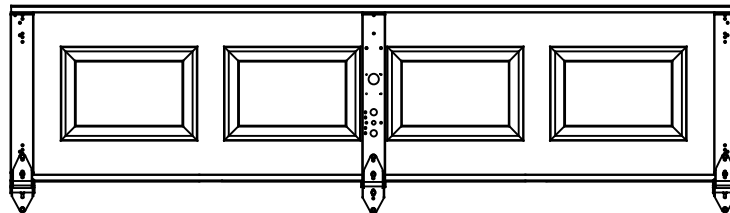
JOHN E. SCATES, PE  
2560 KING ARTHUR BLVD #124-54  
LEWISVILLE, TX 75056  
FL PE 51737  
TX PE 56308/F2203

**Wayne Dalton**  
GARAGE DOORS

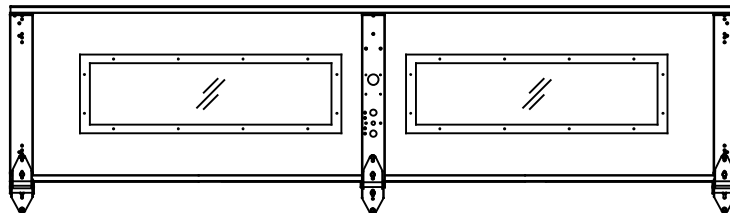
A DIVISION OF OVERHEAD DOOR CORP.  
3395 ADDISON DRIVE  
PENSACOLA, FLORIDA 32514  
(850) 474-9890

STATIC PRESSURE RATINGS		APPROVED SIZES	SCALE: N.T.S.	SIZE: A
DESIGN (PSF):	+26.90/-30.80	MAX WIDTH: 9'-0"	DATE	NAME
TEST (PSF):	+40.35/-46.20	MAX HEIGHT: 14'-0"	DRAWN	ESC
IMPACT/CYCLIC RATED (YES/NO):	YES	MAX SECTION HEIGHT: 21"	CHECKED	TLC
MODELS 8000/8100/8200			SHEET 1 OF 2	
WINDLOAD SPECIFICATION OPTION CODE 1107			DRAWING PART NO.	REV.
			364232	B

CENTER STILE & INTERMEDIATE HINGE LOCATIONS



LONG LITE GLAZING LAYOUT



U-BAR LOCATIONS

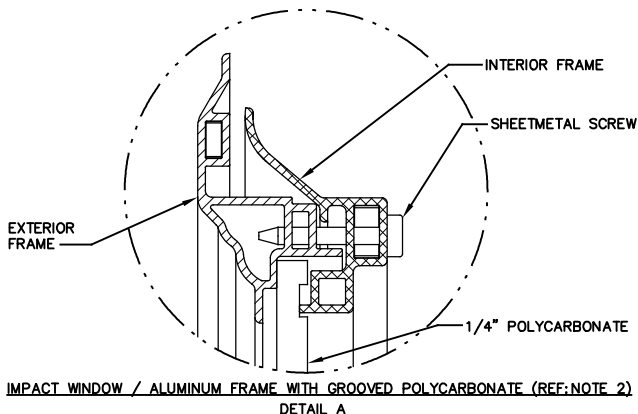
(8) SECTION DOORS WITH  
(11) 3" 20 GA 80 KSI U-BARS  
LOCATED AS SHOWN

(7) SECTION DOORS WITH  
(10) 3" 20 GA 80 KSI U-BARS  
LOCATED AS SHOWN

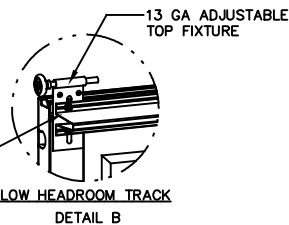
(6) SECTION DOORS WITH  
(8) 3" 20 GA 80 KSI U-BARS  
LOCATED AS SHOWN

(5) SECTION DOORS WITH  
(7) 3" 20 GA 80 KSI U-BARS  
LOCATED AS SHOWN

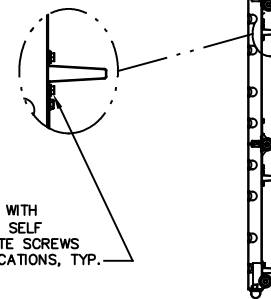
(4) SECTION DOORS WITH  
(5) 3" 20 GA 80 KSI U-BARS  
LOCATED AS SHOWN



PLACE 3" U-BAR OVER LOW  
HEADROOM BRACKET ATTACH THRU  
END STILE AT EACH END WITH (2)  
1/4-14x7/8" SELF DRILLING  
CRIMPTITE SCREWS.



ATTACH U-BARS WITH  
(2) 1/4-14x7/8" SELF  
DRILLING CRIMPTITE SCREWS  
AT ALL STILE LOCATIONS, TYP.



STATIC PRESSURE RATINGS		APPROVED SIZES	SCALE: N.T.S.	SIZE: A
DESIGN (PSF):	+26.90/-30.80	MAX WIDTH: 9'-0"	DATE	NAME
TEST (PSF):	+40.35/-46.20	MAX HEIGHT: 14'-0"	DRAWN 10/12/18	ESC
IMPACT/CYCLIC RATED (YES/NO): YES		MAX SECTION HEIGHT: 21"	CHECKED 4/12/21	TLC
MODELS 8000/8100/8200			SHEET 2 OF 2	
WINDLOAD SPECIFICATION OPTION CODE 1107			DRAWING PART NO.	REV.
			364232	B