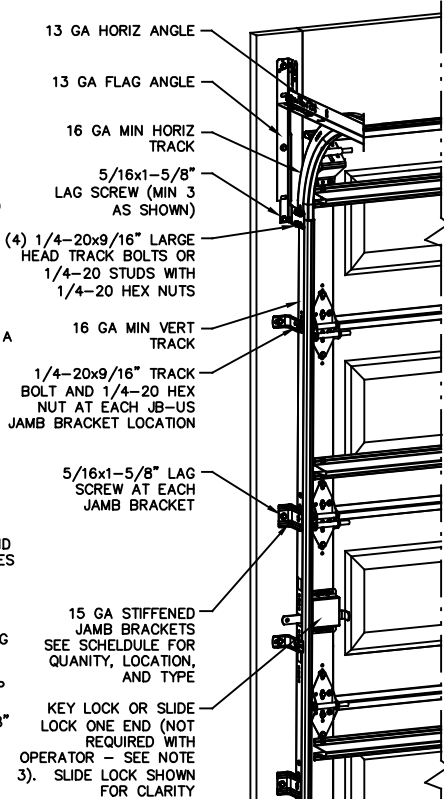


**NOTES:**

- NON IMPACT GLAZING OPTIONS:  
16 X 9.75 CLEAR OPENING  
36.75 X 9.75 CLEAR OPENING  
GLAZING SSB (0.090") MINIMUM.  
MAY INCLUDE DECORATIVE INSERTS  
INSTALLED IN TOP OR INTERMEDIATE SECTION.  
NOT AVAILABLE IN MORE THAN ONE SECTION.  
DOES NOT SATISFY WINDBORNE-DEBRIS.
- IMPACT GLAZING NOT AVAILABLE.
- VINYL OR WOOD DOOR STOP NAILED A  
MAXIMUM OF 6" O.C. MUST OVERLAP TOP AND  
BOTH ENDS OF PANELS MINIMUM 7/16" TO  
MEET NEGATIVE PRESSURES.
- KEY LOCK, SLIDE LOCK, OR OPERATOR  
REQUIRED.
- LOUVER OPTION - .032" MINIMUM LOUVERS  
IN MOLDED FRAMES SCREWED TOGETHER WITH A  
MINIMUM OF (10) #8x1" SCREWS INSTALLED IN  
THE BOTTOM SECTION. LOUVERS ARE NOT  
IMPACT RESISTANT AND DO NOT MEET THE  
REQUIREMENTS FOR WIND-BORNE DEBRIS  
REGIONS.
- SECTION STEEL TO HAVE A MINIMUM 25 GA  
THICKNESS.
- THE DESIGN OF THE SUPPORTING  
STRUCTURAL ELEMENTS SHALL BE THE  
RESPONSIBILITY OF THE PROFESSIONAL OF  
RECORD FOR THE BUILDING OR STRUCTURE AND  
IN ACCORDANCE WITH CURRENT BUILDING CODES  
FOR THE LOADS LISTED ON THIS DRAWING.
- DOOR JAMB TO BE GRADE 2 SOUTHERN  
PINE. REFER TO JAMB CONNECTION  
SUPPLEMENT FOR ATTACHMENT TO SUPPORTING  
STRUCTURE.
- FOR LOW HEAD ROOM LIFT CONDITIONS, TOP  
BRACKET SHALL BE A 13 GA LHR 7/4 TOP  
BRACKET WITH A MINIMUM OF (3) 1/4-14x7/8"  
SELF DRILLING CRIMPTITE SCREWS IN LIEU OF  
THE BRACKET SHOWN ON THIS DRAWING.



NOTE: (4) SECTION SOLID DOOR SHOWN. SEE SHEET 2 FOR U-BAR LOCATIONS ON DOORS WITH OTHER SECTION QUANTITIES AND SEE NOTE 1 THIS SHEET FOR GLAZING OPTIONS.

13 GA ROLLER SLIDE ATTACHED TO BRACKET WITH 5/16-18 BOLT & NUT IN CENTER SLOT AND 1/4-20x9/16" TRACK BOLT & 1/4-20 HEX NUT THROUGH ANY TWO ALIGNING HOLES

13 GA COMMERCIAL 'A' FRAME TOP BRACKET ATTACHED WITH (4) 1/4-14x7/8" SELF DRILLING CRIMPTITE SCREWS

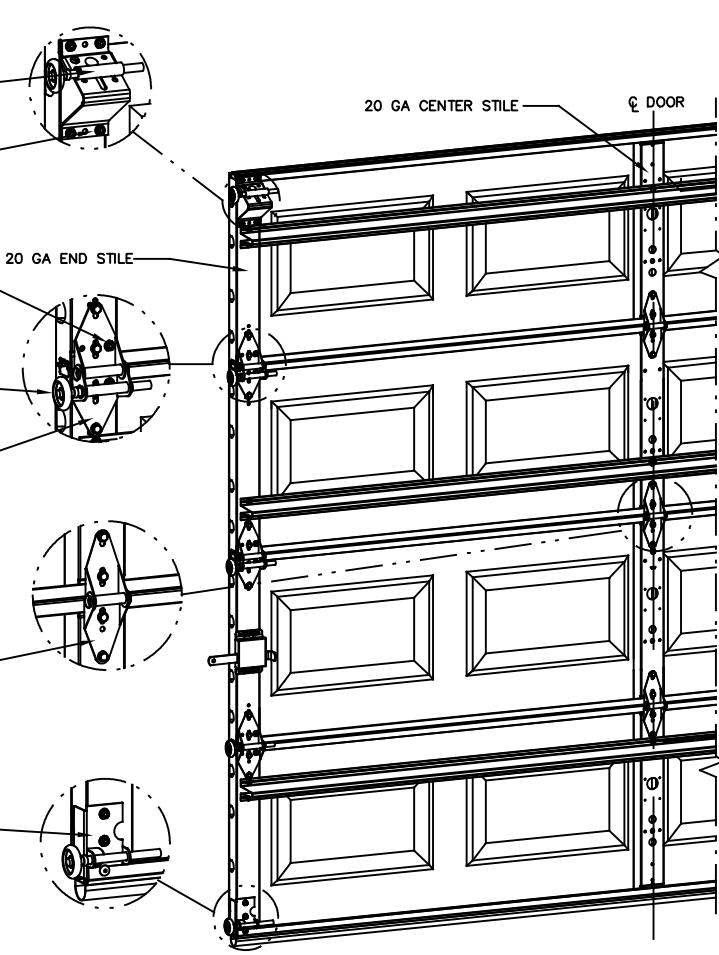
ADD (2) 1/4-14x7/8" SELF DRILLING CRIMPTITE SCREWS (INSIDE OF EACH END HINGE)

2" NYLON STORMGARD ROLLER WITH 4-1/2" STEM EACH ROLLER LOCATION. OPTIONAL- 11 BALL BEARING NYLON ROLLER

14 GA WIDE BODY END HINGE ATTACHED WITH (4) 1/4-14x5/8" SELF TAPPING SCREWS

18 GA NARROW BODY INTERMEDIATE HINGE ATTACHED WITH (4) 1/4-14x5/8" SELF TAPPING SCREWS

14 GA BOTTOM BRACKET ATTACHED WITH (2) 1/4-14x7/8" SELF DRILLING CRIMPTITE SCREWS AND (1) 1/4-14x5/8" SELF DRILLING RED SCREW



**SUPERIMPOSED DESIGN PRESSURE LOADS ON SUPPORTING STRUCTURE**

DOOR WIDTH	DOOR HEIGHT	UNIFORM LOAD EACH JAMB (PLF)
8'-0"	ALL	+91.6/-105.2
9'-0"	ALL	+103.1/-118.4

**JAMB BRACKET SCHEDULE**

DOOR HEIGHT	NO. OF SECTIONS	NO. OF JAMB BRACKETS (EACH JAMB)	TRACK TYPE	LOCATION OF CENTERLINE OF JAMB BRACKETS MEASURED FROM BOTTOM OF TRACK (ALL DIMENSIONS ± 2")
6'-6"	4	4	QI	14" (QI), 34" (JB-US), 44" (QI), 56" (JB-US)
6'-6"	4	4	FAT	10" (JB-US), 25-3/4" (JB-US), 39" (JB-US), 57-1/4" (JB-US)
7'-0"	4	4	QI	14" (QI), 29-1/2" (JB-US), 44" (QI), 63-1/4" (JB-US)
7'-0"	4	4	FAT	10" (JB-US), 29-3/4" (JB-US), 42" (JB-US), 63-1/4" (JB-US)
7'-6"	5	5	QI	14" (QI), 28-1/2" (JB-US), 43" (QI), 62-1/2" (QI), 72" (JB-US)
7'-6"	5	5	FAT	10" (JB-US), 26-3/4" (JB-US), 45" (JB-US), 63" (JB-US), 74-1/2" (JB-US)
8'-0"	5	5	QI	14" (QI), 34" (JB-US), 46" (QI), 58" (JB-US), 66-1/2" (QI)
8'-0"	5	5	FAT	10" (JB-US), 29-3/4" (JB-US), 48" (JB-US), 57-1/2" (JB-US), 77-1/2" (JB-US)
> 8'-0"				SEE NOTE BELOW

NOTE:  
(JB-US) FOLLOWING DIMENSION DENOTES SLOTTED JAMB BRACKET ATTACHED TO TRACK WITH 1/4-20x9/16" TRACK BOLT AND NUT.  
(QI) FOLLOWING DIMENSION DENOTES QUICK INSTALL JAMB BRACKET INSTALLED IN BUTTERFLY SLOT. NO ADDITIONAL HARDWARE NEEDED TO ATTACH TO TRACK.  
ALL DOORS GREATER THAN 8' IN HEIGHT REQUIRE USE OF CONTINUOUS WALL ANGLE. SEE SUPPLEMENT TRACK CHART FOR DETAILS.

**REVISIONS**  
PO NEW DRAWING, PER ER 31052  
ESC 10/12/18  
P1 UPDATED NOTES ADDED LHR DETAIL ER 31052  
ESC 2/12/19

JOHN E. SCATES, PE  
2560 KING ARTHUR BLVD #124-54  
LEWISVILLE, TX 75056  
FL PE 51737  
TX PE 56308/F2203

PROFESSIONAL ENGINEER'S SEAL PROVIDED ONLY FOR VERIFICATION OF WINDLOAD CONSTRUCTION DETAILS.

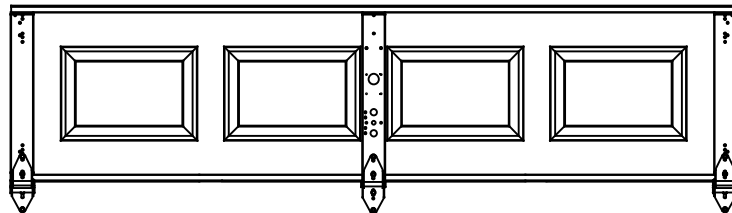
**Wayne Dalton**  
GARAGE DOORS  
A DIVISION OF OVERHEAD DOOR CORP  
3395 ADDISON DRIVE  
PENSACOLA, FLORIDA 32514  
(850) 474-9890

STATIC PRESSURE RATINGS		APPROVED SIZES		SCALE: N.T.S.		SIZE: A	
DESIGN (PSF):	+22.90/-26.30	MAX WIDTH:	9'-0"	DATE		NAME	
TEST (PSF):	+34.35/-39.45	MAX HEIGHT:	14'-0"	DRAWN	10/12/18	ESC	
IMPACT/CYCLIC RATED (YES/NO):	NO	MAX SECTION HEIGHT:	21"	CHECKED	10/12/18	DJK	
MODELS 8000/8100/8200				SHEET 1 OF 2			
WINDLOAD SPECIFICATION OPTION CODE 1106				DRAWING PART NO.		REV.	
				364231		P1	

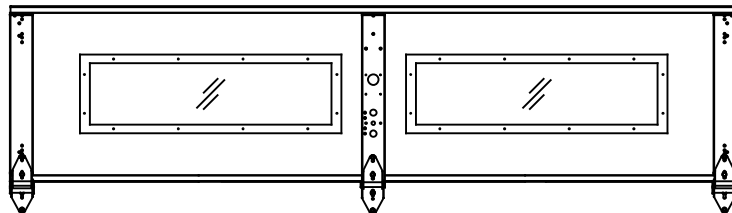
REVISIONS

PO NEW DRAWING, PER  
ER 31052  
ESC 10/12/18  
P1 UPDATED NOTES  
ADDED LHR DETAIL ER  
31052  
ESC 2/12/19

CENTER STILE & INTERMEDIATE HINGE LOCATIONS



LONG LITE GLAZING LAYOUT



U-BAR LOCATIONS

(8) SECTION DOORS WITH  
(5) 3" 20 GA 80 KSI U-BARS  
LOCATED AS SHOWN

(7) SECTION DOORS WITH  
(5) 3" 20 GA 80 KSI U-BARS  
LOCATED AS SHOWN

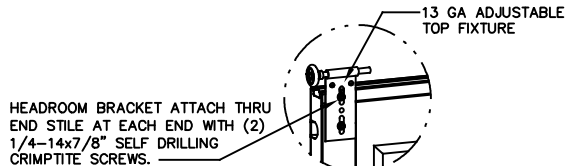
(6) SECTION DOORS WITH  
(4) 3" 20 GA 80 KSI U-BARS  
LOCATED AS SHOWN

(5) SECTION DOORS WITH  
(4) 3" 20 GA 80 KSI U-BARS  
LOCATED AS SHOWN

(4) SECTION DOORS WITH  
(3) 3" 20 GA 80 KSI U-BARS  
LOCATED AS SHOWN

ALTERNATE U-BAR LOCATION-MAY  
OVERLAP HINGES

ATTACH U-BARS WITH  
(2) 1/4-14x7/8" SELF  
DRILLING CRIMP TITE SCREWS  
AT ALL STILE LOCATIONS, TYP.



LOW HEADROOM TRACK  
DETAIL A

PROFESSIONAL ENGINEER'S SEAL PROVIDED ONLY FOR  
VERIFICATION OF WINDLOAD CONSTRUCTION DETAILS.

JOHN E. SCATES, PE  
2560 KING ARTHUR BLVD #124-54  
LEWISVILLE, TX 75056  
FL PE 51737  
TX PE 56308/F2203

**Wayne Dalton**  
GARAGE DOORS

A DIVISION OF OVERHEAD DOOR CORP.  
3395 ADDISON DRIVE  
PENSACOLA, FLORIDA 32514  
(850) 474-9890

STATIC PRESSURE RATINGS		APPROVED SIZES		SCALE: N.T.S.		SIZE: A	
DESIGN (PSF):	+22.90/-26.30	MAX WIDTH:	9'-0"	DATE	NAME		
TEST (PSF):	+34.35/-39.45	MAX HEIGHT:	14'-0"	DRAWN	ESC		
IMPACT/CYCLIC RATED (YES/NO):	NO	MAX SECTION HEIGHT: 21"	CHECKED	10/12/18		DJK	
MODELS 8000/8100/8200				SHEET 2 OF 2			
WINDLOAD SPECIFICATION OPTION CODE 1106				DRAWING PART NO.		REV.	
				364231		P1	