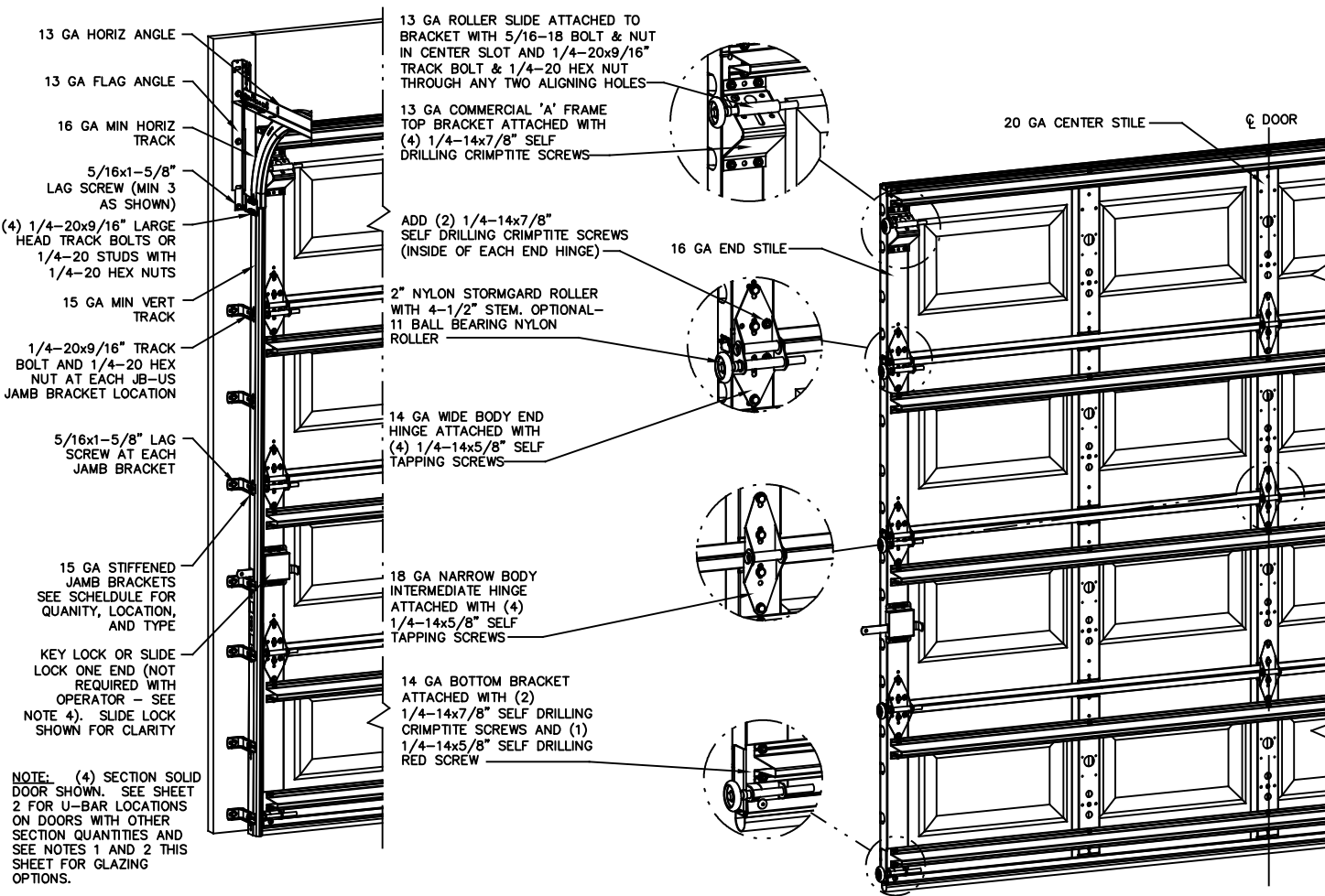


**NOTES:**

1. IMPACT RESISTANT GLAZING OPTION— IMPACT RESISTANT GLAZING SYSTEM MAY BE INSTALLED IN TOP OR INTERMEDIATE SECTION (WITH OR WITHOUT DECORATIVE INSERTS). GLAZING SHALL BE 1/4" POLYCARBONATE. MAXIMUM GLAZING DIMENSIONS SHALL BE 11" x 17" CUTOUT, FASTENED WITH #8 X 1" SMS: 3X ALONG THE HORIZONTAL AND 2X ALONG THE VERTICAL. SEE DETAIL A ON SHEET 2 FOR ASSEMBLY DETAILS.
2. VINYL OR WOOD DOOR STOP NAILED A MAXIMUM OF 6" O.C. MUST OVERLAP TOP AND BOTH ENDS OF PANELS MINIMUM 7/16" TO MEET NEGATIVE PRESSURES.
3. KEY LOCK, SLIDE LOCK, OR OPERATOR REQUIRED.
4. SECTION STEEL TO HAVE A MINIMUM 25 GA THICKNESS.
5. THE DESIGN OF THE SUPPORTING STRUCTURAL ELEMENTS SHALL BE THE RESPONSIBILITY OF THE PROFESSIONAL OF RECORD FOR THE BUILDING OR STRUCTURE AND IN ACCORDANCE WITH CURRENT BUILDING CODES FOR THE LOADS LISTED ON THIS DRAWING.
6. DOOR JAMB TO BE MINIMUM 2x6, STRUCTURAL GRADE SOUTHERN PINE. REFER TO JAMB CONNECTION SUPPLEMENT FOR ATTACHMENT TO SUPPORTING STRUCTURE.
7. FOR LOW HEAD ROOM LIFT CONDITIONS, TOP BRACKET SHALL BE A 13 GA LHR 7/4 TOP BRACKET WITH A MINIMUM OF (3) 1/4-14x7/8" SELF DRILLING CRIMPITITE SCREWS IN LIEU OF THE BRACKET SHOWN ON THIS DRAWING. U-BAR ON TOP SECTION SHALL BE INSTALLED ON TOP OF LHR TOP BRACKETS.



NOTE: (4) SECTION SOLID DOOR SHOWN. SEE SHEET 2 FOR U-BAR LOCATIONS ON DOORS WITH OTHER SECTION QUANTITIES AND SEE NOTES 1 AND 2 THIS SHEET FOR GLAZING OPTIONS.

**REVISIONS**

- P1 IMPACT RESISTANT GLAZING OPTION. INCREASED DESIGN PRESSURE TO +46.00/-52.00 PSF. GRT 6/29/07
- P2 ADDED IMPACT RESISTANT GLAZING. ADDED DETAIL A SHEET 2 FOR GLAZING. ADDED MAX GLAZING DIMENSION TO NOTES SHEET 1. ADDED TRACK TO FLAG CONNECTION NOTE. GRT 11/10/07
- P3 MODIFIED LOUVER OPTION. ADDED TEXAS LICENSE NUMBER TO TITLE BLOCK. GRT 9/19/08
- P4 UPDATED TITLE BLOCK AND IMPACT GLAZING GRT 4/16/12
- P5 UPDATED TITLE BLOCK ESC 10/3/17
- P6 UPDATED TITLE BLOCK, REV PER ER 31052 ESC 5/31/18
- P7 UPDATED NOTES ADDED LHR DETAIL ER 31052 ESC 2/12/19
- REV H ADDED IRC/IBC NOTE TLC 4/12/21

**SUPERIMPOSED DESIGN PRESSURE LOADS ON SUPPORTING STRUCTURE**

DOOR WIDTH	DOOR HEIGHT	UNIFORM LOAD EACH JAMB (PLF)
8'-0"	ALL	+184.0/-208.0
9'-0"	ALL	+207.0/-234.0

JAMB BRACKET SCHEDULE			
DOOR HEIGHT	NO. OF SECTIONS	NO. OF JAMB BRACKETS (EACH JAMB)	LOCATION OF CENTERLINE OF JAMB BRACKETS MEASURED FROM BOTTOM OF TRACK (ALL DIMENSIONS ± 2")
6'-6"	4	7	2" (JB-US), 10" (JB-US), 21-3/4" (JB-US), 29-3/4" (JB-US), 39" (JB-US), 48" (JB-US), 57-1/4" (JB-US)
7'-0"	4	7	2" (JB-US), 10" (JB-US), 21-3/4" (JB-US), 29-3/4" (JB-US), 42" (JB-US), 52-1/2" (JB-US), 63-1/4" (JB-US)
7'-6"	5	8	2" (JB-US), 10" (JB-US), 18-3/4" (JB-US), 26-3/4" (JB-US), 36" (JB-US), 45" (JB-US), 54-1/4" (JB-US), 74-1/2" (JB-US)
8'-0"	5	8	2" (JB-US), 10" (JB-US), 21-3/4" (JB-US), 29-3/4" (JB-US), 39" (JB-US), 48" (JB-US), 57-1/2" (JB-US), 75-1/2" (JB-US)
> 8'-0"			SEE NOTE BELOW

NOTE: (JB-US) FOLLOWING DIMENSION DENOTES SLOTTED JAMB BRACKET ATTACHED TO TRACK WITH 1/4-20x9/16" TRACK BOLT AND NUT AS SHOWN ABOVE.  
ALL DOORS GREATER THAN 8' IN HEIGHT REQUIRE USE OF CONTINUOUS WALL ANGLE. SEE SUPPLEMENT TRACK CHART FOR DETAILS.

COMPLIES WITH THE REQUIREMENTS OF IBC/IRC 2018.

**Wayne Dalton**  
GARAGE DOORS

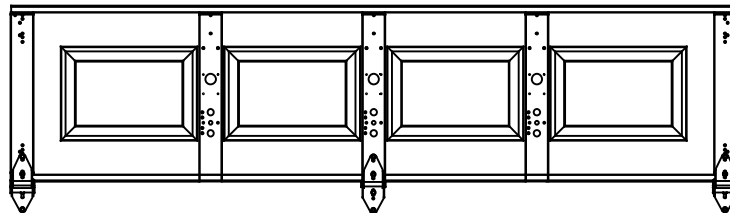
A DIVISION OF OVERHEAD DOOR CORP.  
3395 ADDISON DRIVE  
PENSACOLA, FLORIDA 32514  
(850) 474-9890

STATIC PRESSURE RATINGS		APPROVED SIZES	SCALE: N.T.S.	SIZE: A
DESIGN (PSF):	+46.00/-52.00	MAX WIDTH: 9'-0"	DATE	NAME
TEST (PSF):	+69.00/-78.00	MAX HEIGHT: 14'-0"	DRAWN	GRT
IMPACT/CYCLIC RATED (YES/NO):	YES	MAX SECTION HEIGHT: 21"	CHECKED	TLC
MODELS 8000/8100/8200			SHEET 1 OF 2	
WINDLOAD SPECIFICATION OPTION CODE 1104			DRAWING PART NO.	REV.
			327013	H

PROFESSIONAL ENGINEER'S SEAL PROVIDED ONLY FOR VERIFICATION OF WINDLOAD CONSTRUCTION DETAILS.

JOHN E. SCATES, PE  
2560 KING ARTHUR BLVD #124-54  
LEWISVILLE, TX 75056  
FL PE 51737  
TX PE 56308/F2203

CENTER STILE & INTERMEDIATE HINGE LOCATIONS



U-BAR LOCATIONS

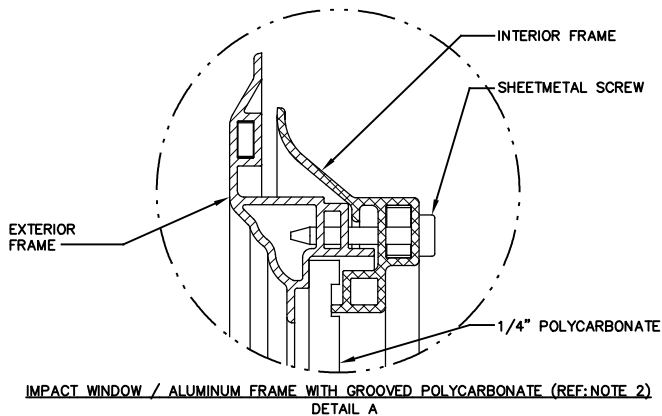
(8) SECTION DOORS WITH  
(10) 3" 20 GA 80 KSI U-BARS  
LOCATED AS SHOWN

(7) SECTION DOORS WITH  
(9) 3" 20 GA 80 KSI U-BARS  
LOCATED AS SHOWN

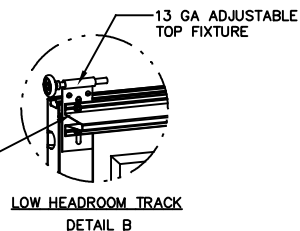
(6) SECTION DOORS WITH  
(8) 3" 20 GA 80 KSI U-BARS  
LOCATED AS SHOWN

(5) SECTION DOORS WITH  
(7) 3" 20 GA 80 KSI U-BARS  
LOCATED AS SHOWN

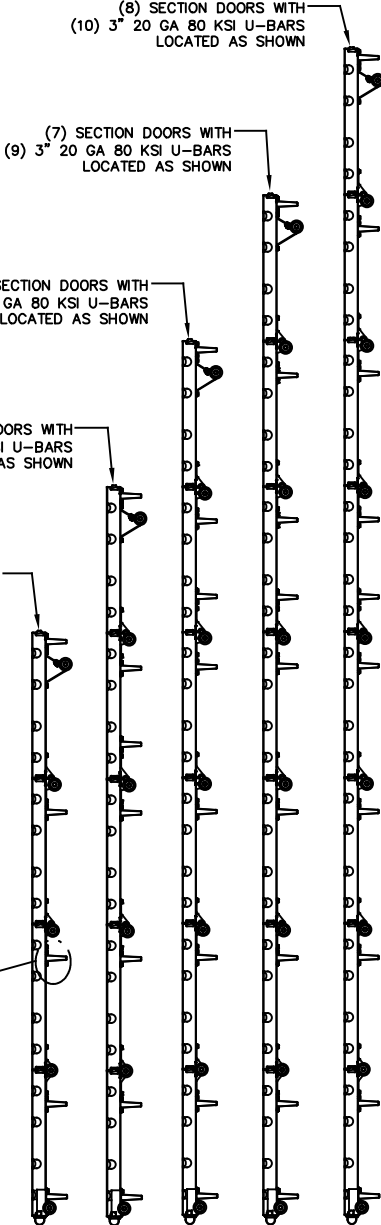
(4) SECTION DOORS WITH  
(5) 3" 20 GA 80 KSI U-BARS  
LOCATED AS SHOWN



PLACE 3" U-BAR OVER LOW  
HEADROOM BRACKET ATTACH THRU  
END STILE AT EACH END WITH (2)  
1/4-14x7/8" SELF DRILLING  
CRIMP TITE SCREWS.



ATTACH U-BARS WITH  
(2) 1/4-14x7/8" SELF  
DRILLING CRIMP TITE SCREWS  
AT ALL STILE LOCATIONS, TYP.



PROFESSIONAL ENGINEER'S SEAL PROVIDED ONLY FOR  
VERIFICATION OF WINDLOAD CONSTRUCTION DETAILS.

JOHN E. SCATES, PE  
2560 KING ARTHUR BLVD #124-54  
LEWISVILLE, TX 75056  
FL PE 51737  
TX PE 56308/F2203

**Wayne Dalton**  
GARAGE DOORS

A DIVISION OF OVERHEAD DOOR CORP.  
3395 ADDISON DRIVE  
PENSACOLA, FLORIDA 32514  
(850) 474-9890

STATIC PRESSURE RATINGS		APPROVED SIZES		SCALE: N.T.S.	SIZE: A
DESIGN (PSF):	+46.00/-52.00	MAX WIDTH:	9'-0"	DATE	NAME
TEST (PSF):	+69.00/-78.00	MAX HEIGHT:	14'-0"	DRAWN	GRT
IMPACT/CYCLIC RATED (YES/NO): YES		MAX SECTION HEIGHT:	21"	CHECKED	TLC
MODELS 8000/8100/8200				SHEET 2 OF 2	
WINDLOAD SPECIFICATION OPTION CODE 1104				DRAWING PART NO.	REV.
				327013	H