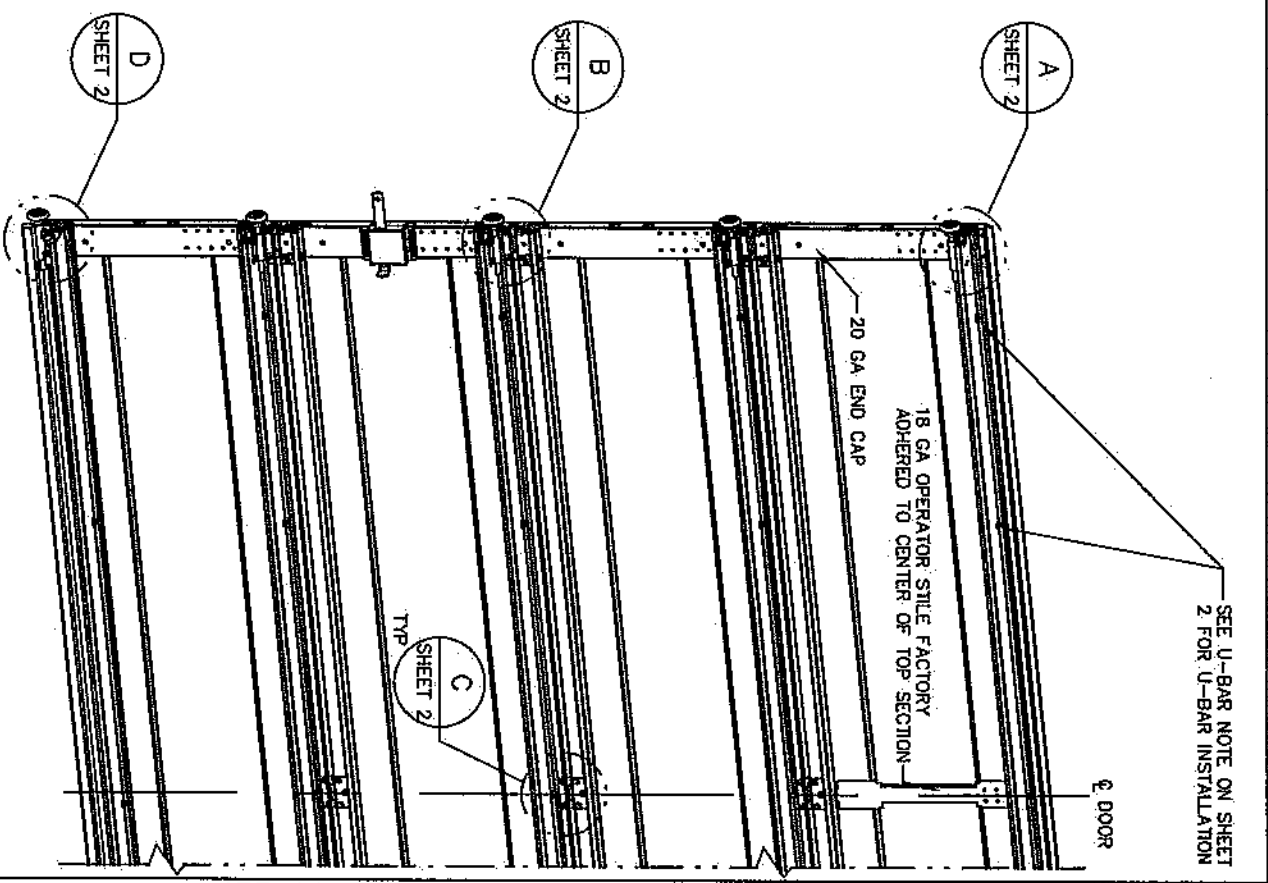
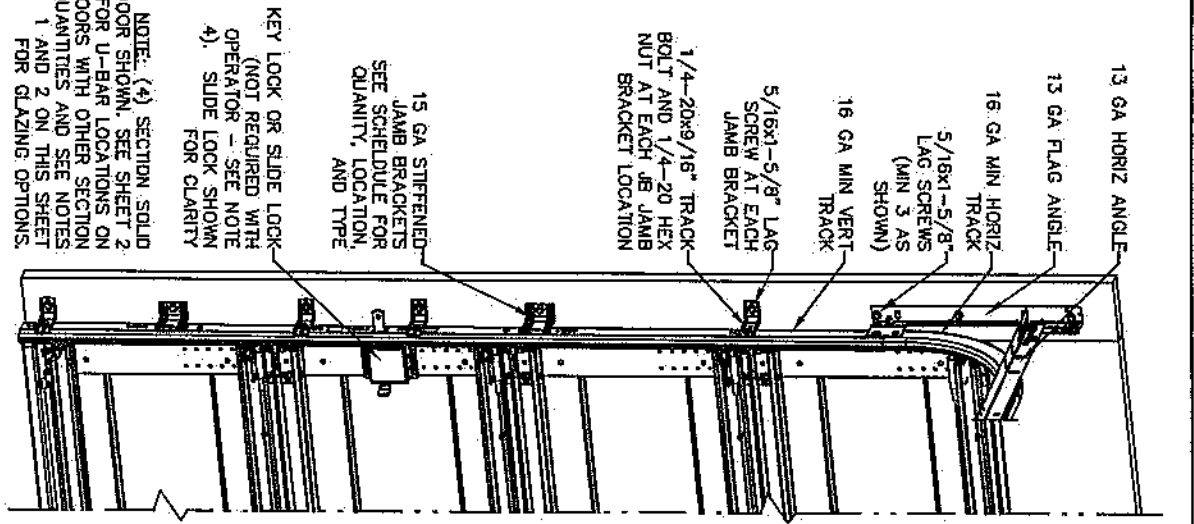


- NOTES:**
1. NON-IMPACT RESISTANT GLAZING (DETAIL H) - .090" MINIMUM SSB GLAZING IN MOLDED FRAMES SCREWED TOGETHER WITH A MINIMUM OF (10) #8x1" SCREWS ((1) ALONG EACH HORIZONTAL LEG AND (2) ALONG EACH VERTICAL LEG) FOR GLAZING WITH A MAXIMUM LENGTH OF 39" INSTALLED IN TOP OR INTERMEDIATE SECTION (WITH OR WITHOUT DECORATIVE INSERTS) MEETS UNIFORM STATIC DESIGN PRESSURES SHOWN ON THIS DRAWING. GLAZING SHALL HAVE A MAXIMUM HEIGHT OF 13.75". GLAZING IS NOT IMPACT RESISTANT AND DOES NOT MEET THE REQUIREMENTS FOR WIND-BORNE DEBRIS REGIONS. SEE DETAIL H ON SHEET 2 FOR ASSEMBLY DETAILS.
  2. IMPACT RESISTANT GLAZING (DETAIL E) - IMPACT RESISTANT GLAZING SYSTEM MAY BE INSTALLED IN TOP OR INTERMEDIATE SECTION (WITH OR WITHOUT DECORATIVE INSERTS). GLAZING SHALL BE 1/4" MARBOLON-AR POLYCARBONATE OR EQUAL. GLAZING SHALL HAVE A MAXIMUM HEIGHT OF 15.21" AND A MAXIMUM LENGTH OF 50.08" SCREWED TOGETHER WITH A MINIMUM OF (10) #8x1" SCREWS ((3) ALONG EACH HORIZONTAL LEG AND (2) ALONG EACH VERTICAL LEG). GLAZING IS IMPACT RESISTANT AND DOES MEET THE REQUIREMENTS FOR WIND-BORNE DEBRIS REGIONS. GLAZED SECTION REQUIRES REINFORCEMENT BRACKETS ATTACHED TO U-BAR ON UPPER INTEGRAL RIB (SEE DETAIL G SHEET 2), 1/4" J-STRUT SCREWED TO LOWER INTEGRAL RIB OF SECTION AND OPERATOR STILE TO BE FACTORY INSTALLED. INSTALLER SHALL FIELD INSTALL (1) 1/4"-14x7/8" SELF DRILLING CRIMP-TITE SCREW TO ATTACH THE J-STRUT TO THE INTEGRAL RIB AND OPERATOR STILE AT THE CENTERLINE OF THE DOOR PER DETAIL F ON SHEET 2.
  3. VINYL OR WOOD DOOR STOP NEEDED A MAXIMUM OF 6" O.C. MUST OVERLAP TOP AND BOTH ENDS OF PANELS MINIMUM 7/16" TO MEET NEGATIVE PRESSURES.
  4. KEY LOCK, SLIDE LOCK, OR OPERATOR REQUIRED.
  5. SECTION SHALL BE CONSTRUCTED WITH FOAMED IN PLACE POLYURETHANE FOAM INSULATION CHEMICALLY BONDED TO 30 GA MINIMUM FIBER STEEL AND A POLYLAMINATE BACKER, OR 32 GA STEEL BACKER. END CAP TO HAVE A MINIMUM 1.1" DEPTH.
  6. THE DESIGN OF THE SUPPORTING STRUCTURAL ELEMENTS SHALL BE THE RESPONSIBILITY OF THE PROFESSIONAL ENGINEER OF RECORD FOR THE BUILDING OR STRUCTURE AND IN ACCORDANCE WITH CURRENT BUILDING CODES FOR THE LOADS LISTED ON THIS DRAWING.
  7. DOOR JAMB TO BE MINIMUM 2x6 STRUCTURAL GRADE LUMBER. REFER TO JAMB CONNECTION SUPPLEMENT FOR ATTACHMENT TO SUPPORTING STRUCTURE.
  8. LOUVER OPTION (DETAIL I) - .08" MINIMUM LOUVERS IN MOLDED FRAMES, 19"x13.9" (OLO=15 1/2" X 10 1/2"), SCREWED TOGETHER WITH A MINIMUM OF (12) #8x1" SCREWS ((3) ALONG EACH HORIZONTAL LEG AND (3) ALONG EACH VERTICAL LEG). LOUVERS ARE NOT IMPACT RESISTANT AND DO NOT MEET THE REQUIREMENTS FOR WIND-BORNE DEBRIS REGIONS. LOUVERS ARE ONLY INSTALLED IN THE BOTTOM SECTION.



- REVISIONS**
- |       |  |             |
|-------|--|-------------|
| P1    | ADDED SHORT PANEL GLAZING OPTION (NOTE 1)  | GRT 6/30/06 |
| P2    | ADDED IMPACT RESISTANCE TO DOOR. ADDED MODEL 6100. MODIFIED NOTE 8 TO STATE THAT LOUVERS ARE NOT IMPACT RESISTANT.                                 | GRT 6/8/07  |
| P3    | MODIFIED JAMB BRACKET SCHEDULE FOR FAT OPTION. ADDED LHR TRACK DETAIL SHEET 2.   | GRT 4/17/08 |
| P4    | ADDED IMPACT RESISTANT GLAZING. ADDED TEXAS LICENSE NUMBER TO TITLE BLOCK. CHANGED LOUVER NOTE TO 8'-9" ADDED HIGH LIFT AND ROOF PITCH TRACK NOTE. | GRT 7/22/08 |
| P5    | UPDATED TITLE BLOCK  | GRT 8/26/10 |
| P6    | ER31526 ADDED 9805, AND BACKER NOTES   | ESC 5/23/17 |
| REV F | UPDATED REVISION FROM NUMERIC TO ALPHA.  | TLC 092920  |
| REV G | UPDATED REVISION ADDED NOTES FOR TD:   | JD 3/19/21  |
| REV H | UPDATED DRAWING FOR TD:  | TLC 4/20/21 |

COMPLIES WITH THE REQUIREMENTS OF IBC/IRC 2018



JUNFENG QIAN  
5729 AMPHORA AVE  
MCKINNEY, TEXAS 75070  
TEXAS PE 130813

PROFESSIONAL ENGINEER'S SEAL PROVIDED ONLY FOR VERIFICATION OF WINDLOAD CONSTRUCTION DETAILS.

**JAMB BRACKET SCHEDULE**

DOOR HEIGHT	NO. OF BRACKETS (EACH JAMB)	TRACK TYPE	LOCATION OF CENTERLINE OF JAMB BRACKETS MEASURED FROM BOTTOM OF TRACK (ALL DIMENSIONS ± 2")
7'-0"	4	Q1	2" (JB), 13" (Q1), 25-1/2" (JB), 34" (JB), 45-1/4" (Q1), 53" (JB)
7'-0"	4	FAT	2" (JB), 10" (JB), 21-3/4" (JB), 29-3/4" (JB), 42" (JB), 53-1/4" (JB)
8'-0"	5	Q1	2" (JB), 13" (Q1), 23" (JB), 34" (JB), 47-1/4" (Q1), 58" (JB), 67" (Q1), 75" (JB)
8'-0"	5	FAT	2" (JB), 10" (JB), 21-3/4" (JB), 29-3/4" (JB), 48" (JB), 57-1/4" (JB), 66" (JB), 75-1/2" (JB)
> 8'-0" / HIGH LIFT / ROOF PITCH			SEE NOTE BELOW

**NOTE:**

(A) FOLLOWING DIMENSION DENOTES SLOTTED JAMB BRACKET ATTACHED TO TRACK WITH 1/4"-20x9/16" TRACK BOLT AND NUT.

(B) FOLLOWING DIMENSION DENOTES QUICK INSTALL JAMB BRACKET INSTALLED IN BUTTERFLY SLOT. NO ADDITIONAL HARDWARE NEEDED TO ATTACH TO TRACK.

(C) ALL DOORS WITH HIGH LIFT, ROOF PITCH, AND/OR GREATER THAN 8' IN HEIGHT REQUIRE USE OF CONTINUOUS WALL ANGLE. SEE SUPPLEMENT TRACK CHART FOR DETAILS.

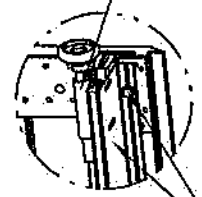
**SUPERIMPOSED DESIGN PRESSURE LOADS ON SUPPORTING STRUCTURE**

MAX. DOOR WIDTH	ALL	UNIFORM LOAD EACH JAMB (PLF)	+172.8/-198.4
MAX. DOOR HEIGHT	ALL		+194.4/-223.2

**Wayne Dalton**  
GARAGE DOORSA DIVISION OF OVERHEAD DOOR CORP.  
3395 ADDISON DRIVE  
PENSACOLA, FLORIDA 32514  
(850) 474-9890

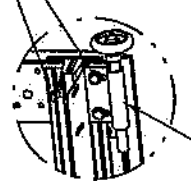
DESIGN (PSF):	+43.20/-49.60	MAX WIDTH:	9'-0"	SCALE:	N.T.S.	DATE:		SIZE:	A
TEST (PSF):	+64.80/-74.40	MAX HEIGHT:	8'-9"	DRAWN:		2/22/06			
IMPACT/CYCLIC RATED (YES/NO):	YES	MAX SECTION HEIGHT:	21"	CHECKED:		4/20/21			
MODELS	5120/9100/9605	SHEET	1 OF 3	DRAWING PART NO.:		319022			
WINDLOAD SPECIFICATION OPTION CODE	0234	REV.:							

13 GA ADJUSTABLE TOP FIXTURE ATTACHED TO PRE-PUNCHED HOLES IN BOTTOM OF U-BAR WITH (2) 1/4-14x5/8" CRIMPITE SCREWS



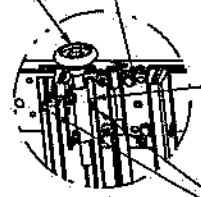
DETAIL A

PLACE U-BAR OVER INTEGRAL RIB WITH THE (8) PRE-PUNCHED HOLES EACH END FACING UPWARD AND ATTACH THRU END CAP AT EACH END WITH (2) 1/4-14x7/8" SELF DRILLING CRIMPITE SCREWS FOR STANDARD TRACK AND (3) 1/4-14x7/8" SELF DRILLING CRIMPITE SCREWS FOR LOW HEADROOM TRACK (2 OF WHICH ARE USED TO ATTACH THE TOP BRACKET AS SHOWN).



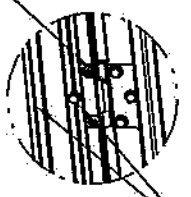
LOW HEADROOM TRACK  
DETAIL A

13 GA ROLLER SLIDE ATTACHED TO PRE-PUNCHED HOLES IN TOP OF U-BAR WITH (2) 1/4-14x5/8" CRIMPITE SCREWS. USE WEARING HOLE IN SLIDE TO ENSURE PROPER ALIGNMENT OF ROLLERS



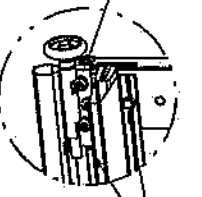
DETAIL B

18 GA HINGE ATTACHED WITH (6) 1/4-20x5/8" CRIMPITE SCREWS (2 OF WHICH ARE FACTORY ATTACHED, 3 OF WHICH ARE FIELD INSTALLED INTO TOP LEAF, AND 1 OF WHICH IS FIELD INSTALLED THRU PRE-PUNCHED HOLE IN U-BAR)



DETAIL C

12 GA BOTTOM BRACKET FACTORY ATTACHED WITH (3) 1/4-14x5/8" CRIMPITE SCREWS



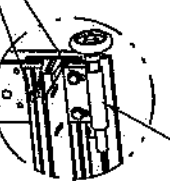
DETAIL D

FOR IMPACT RESISTANCE, BOTTOM BRACKET MUST BE SCREWED TO THE BOTTOM U-BAR WITH (2) 1/4-14x7/8" SELF DRILLING CRIMPITE SCREWS. SEE IMPACT BOTTOM BRACKET DETAIL THIS SHEET.

PLACE U-BAR OVER INTEGRAL RIB AND ATTACH WITH (2) 1/4-20x5/8" CRIMPITE SCREWS THRU PRE-PUNCHED HOLES AT EACH INTERMEDIATE HINGE LOCATION (1 THRU FLANGE OF U-BAR AND BOTTOM HINGE LEAF AND 1 THRU WEB OF U-BAR AND INTEGRAL RIB OF SECTION)

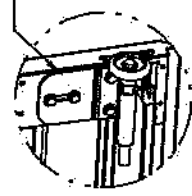
PLACE U-BAR OVER INTEGRAL RIB WITH THE (8) PRE-PUNCHED HOLES EACH END FACING UPWARD AND ATTACH THRU END CAP AT EACH END WITH (2) 1/4-14x7/8" SELF DRILLING CRIMPITE SCREWS EXCEPT U-BAR PLACED OVER TOP RIB ON THE BOTTOM SECTION SHALL ONLY BE ATTACHED THRU END CAP AT EACH END WITH (1) 1/4-14x7/8" SELF DRILLING CRIMPITE SCREW LOCATED ON THE BOTTOM FLANGE OF THE U-BAR NOTE: DUE TO CLEARANCES REQUIRED TO INSTALL SCREWS AT THE ENDS OF THE U-BARS, ALL U-BARS SHALL BE INSTALLED ON SECTIONS PRIOR TO INSTALLING ROLLER SLIDES AND TOP FIXTURE ON THE U-BARS. SEE ATTACHMENT NOTES ON THIS SHEET.

13 GA ADJUSTABLE TOP FIXTURE



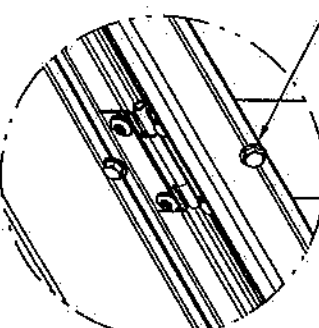
DETAIL E

USED ONLY ON IMPACT GLAZED SECTION - 11 GA REINFORCEMENT BRACKET ATTACHED WITH (4) 1/4-14x7/8" SELF DRILLING CRIMPITE SCREWS (2 THROUGH BOTH BRACKET AND U-BAR)



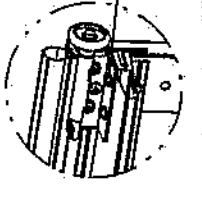
DETAIL F

(1) 1/4-14x7/8" SELF DRILLING CRIMPITE SCREW AT CENTER LINE OF DOOR THRU J-STRUT & OPERATOR BRACKET. NOTE: J-STRUT & SCREW ONLY REQUIRED ON IMPACT GLAZED SECTIONS. SEE NOTE 2. SHEET 1



DETAIL G

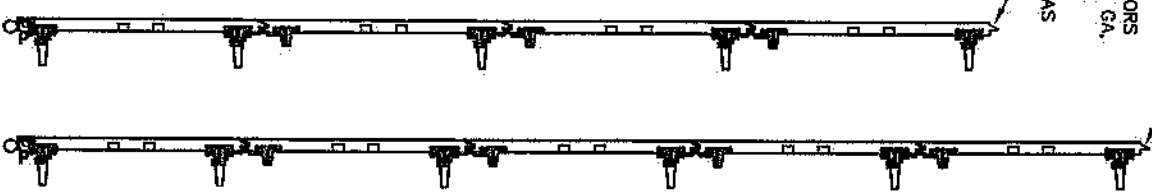
ATTACH BOTTOM BRACKET TO BOTTOM U-BAR WITH (2) 1/4-14x7/8" SELF DRILLING CRIMPITE SCREWS



IMPACT BOTTOM BRACKET

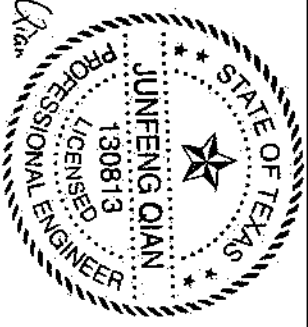
(5) SECTION DOORS WITH (6) 3" 18 GA. SO KSI U-BARS LOCATED OVER INTEGRAL RIBS AS SHOWN

(4) SECTION DOORS WITH (5) 3" 18 GA. SO KSI U-BARS LOCATED OVER INTEGRAL RIBS AS SHOWN



**U-BAR ATTACHMENT NOTES:**

1. ALL U-BARS SHALL BE PLACED OVER INTEGRAL RIBS AND ATTACHED THRU PRE-PUNCHED HOLES WITH (2) 1/4-14x5/8" CRIMPITE SCREWS AT EACH INTERMEDIATE HINGE LOCATION, (2) 1/4-14x7/8" SELF DRILLING CRIMPITE SCREWS AT EACH END CAP (EXCEPT BOTH U-BARS ON BOTTOM SECTION - SEE DETAIL B AND D THIS SHEET), (2) 1/4-14x5/8" CRIMPITE SCREWS APPROXIMATELY MIDWAY BETWEEN END OF DOOR AND INTERMEDIATE HINGE LOCATION, AND (1) 1/4-14x5/8" CRIMPITE SCREW APPROXIMATELY 8" FROM EACH END. THERE SHALL BE A TOTAL OF (12) SCREWS ATTACHING EACH U-BAR EXCEPT BOTH U-BARS ON BOTTOM SECTION SHALL HAVE A TOTAL OF (10) SCREWS EACH.
2. WITH THE EXCEPTION OF THE (8) PRE-PUNCHED HOLES IN THE TOP OF EACH END USED FOR ATTACHMENT OF THE ROLLER SLIDES AND THE (6) PRE-PUNCHED HOLES IN THE BOTTOM OF EACH END USED FOR THE ATTACHMENT OF THE TOP FIXTURE AND UNLESS NOTED OTHERWISE ON THIS SPECIFICATION DRAWING, ALL PRE-PUNCHED HOLES IN ALL U-BARS SHALL BE ATTACHED TO THE DOOR WITH 1/4-14x5/8" CRIMPITE SCREWS.
3. 18 GA U-BARS SHALL BE STAMPED ".46" APPROXIMATELY 8" FROM EACH END.

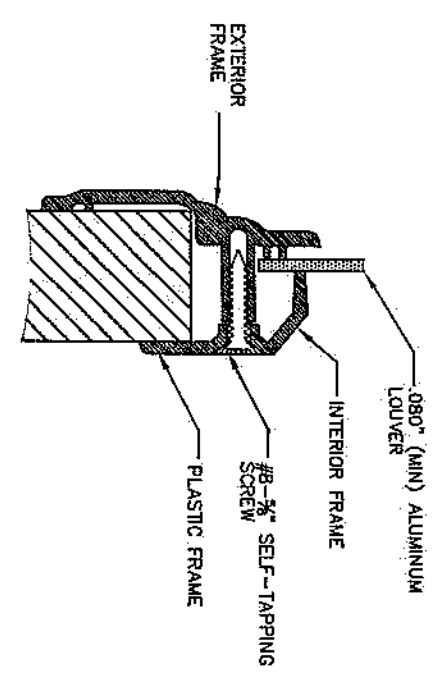
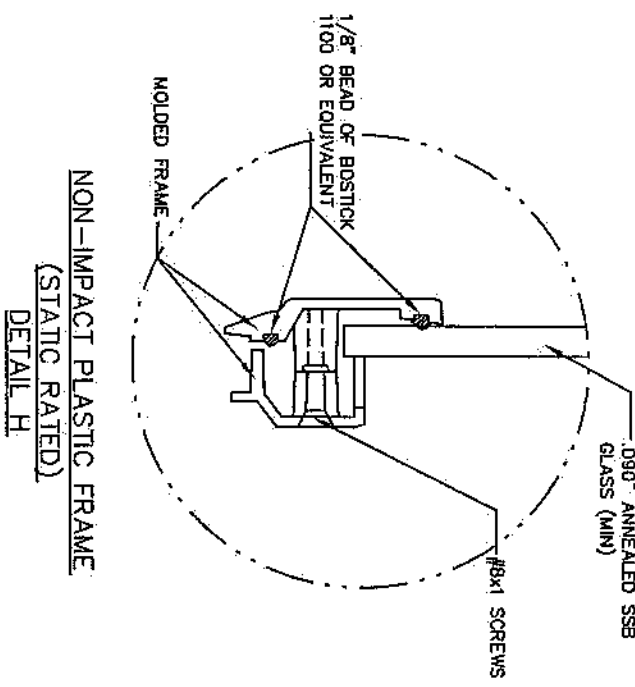
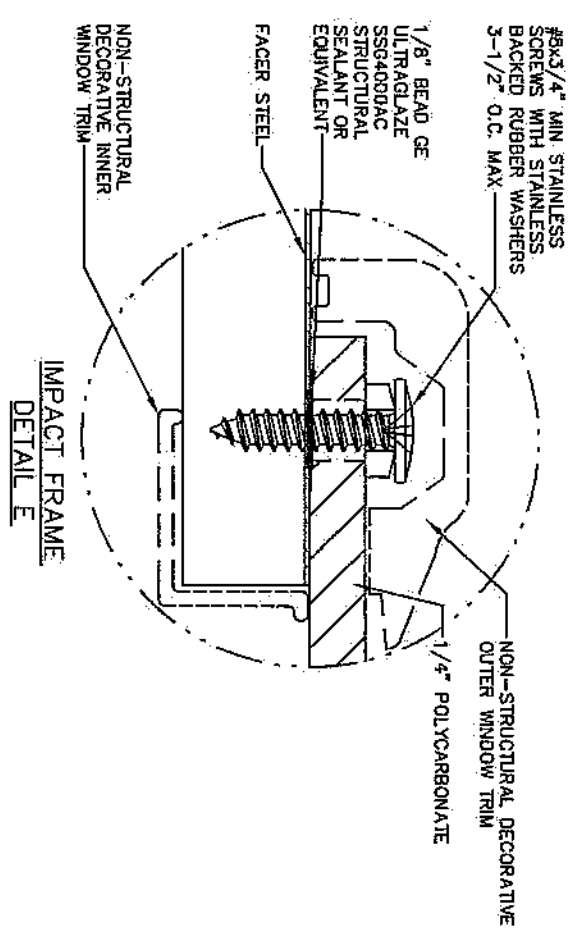


Junfeng Qian  
4/30/2021  
JUNFENG QIAN  
5729 AMPHORA AVE  
MCKINNEY, TEXAS 75070  
TEXAS PE 130813  
PROFESSIONAL ENGINEER'S SEAL PROVIDED ONLY FOR VERIFICATION OF WINDLOAD CONSTRUCTION DETAILS.

**Wayne Dalton**  
GARAGE DOORS  
A DIVISION OF OVERHEAD DOOR CORP.  
3395 ADDISON DRIVE  
PENSACOLA, FLORIDA 32514  
(850) 474-9890

STATIC PRESSURE RATINGS		APPROVED SIZES		SCALE: N.T.S.	
DESIGN (PSF):	+43.20/-49.60	MAX WIDTH:	9'-0"	DATE:	
TEST (PSF):	+64.80/-74.40	MAX HEIGHT:	8'-9"	DRAWN:	2/22/06
IMPACT/CYCLIC RATED (YES/NO):	YES	MAX SECTION HEIGHT:	21"	CHECKED:	4/20/21
MODELS 5120/9100/9605		SHEET 2 OF 3		DRAWING PART NO. 319022	
WINDLOAD SPECIFICATION OPTION CODE 0234		REV. H			

REVISIONS:



Junfeng Qian  
4/20/2021  
JUNFENG QIAN  
5729 AMPHORA AVE  
MCKINNEY, TEXAS 75070  
TEXAS PE 130813  
PROFESSIONAL ENGINEER'S SEAL PROVIDED ONLY FOR VERIFICATION OF WINDLOAD CONSTRUCTION DETAILS.

**Wayne Dalton**  
GARAGE DOORS  
A DIVISION OF OVERHEAD DOOR CORP.  
3385 ADDISON DRIVE  
PENSACOLA, FLORIDA 32514  
(850) 474-9990

STATIC PRESSURE RATINGS		APPROVED SIZES	SCALE: N.T.S.	SIZE: A
DESIGN (PSF):	+43.20/-49.60	MAX WIDTH: 9'-0"	DATE	NAME
TEST (PSF):	+64.80/-74.40	MAX HEIGHT: 8'-9"	DRAWN: 2/22/06	GRT
IMPACT/CYCLIC RATED (YES/NO):	YES	MAX SECTION HEIGHT: 21"	CHECKED: 4/20/21	TLC
MODELS 5120/9100/9605		SHEET 3 OF 3		
WINDLOAD SPECIFICATION OPTION CODE 0234		DRAWING PART NO. 319022		REV. H