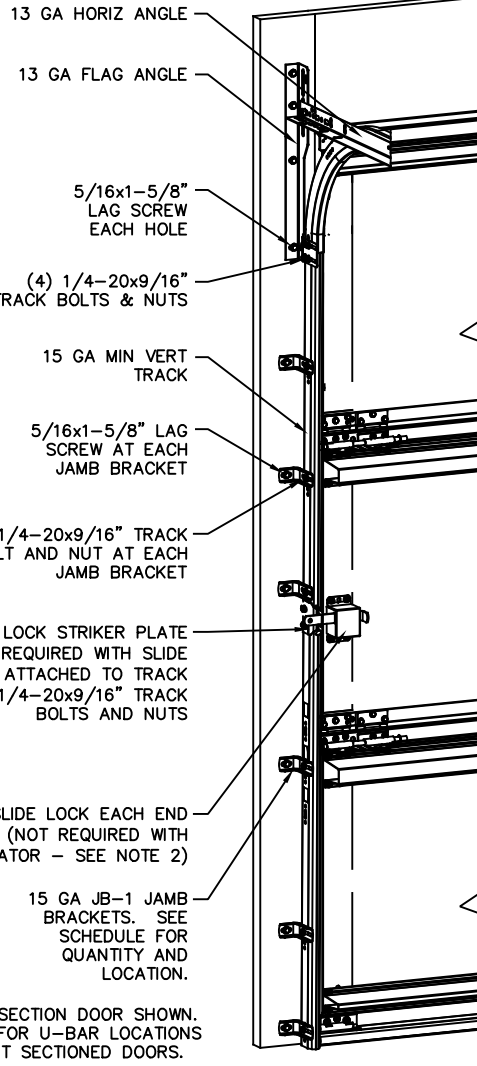


NOTES:

1. DOOR MUST OVERLAP JAMBS A MINIMUM OF 1" ON EACH SIDE OF THE OPENING.
2. SLIDE LOCK OR OPERATOR REQUIRED. LOW HEADROOM REQUIRES A LOCK ON THE LEFT AND RIGHT SIDE OF THE DOOR.
3. THE DESIGN OF THE SUPPORTING STRUCTURAL ELEMENTS SHALL BE THE RESPONSIBILITY OF THE PROFESSIONAL OF RECORD FOR THE BUILDING OR STRUCTURE AND IN ACCORDANCE WITH CURRENT BUILDING CODES FOR THE LOADS LISTED ON THIS DRAWING.
4. SECTION STEEL TO HAVE THE FOLLOWING MINIMUM THICKNESS:
EXTERIOR - 27 GA
INTERIOR - 30 GA
5. DOOR JAMB TO BE MINIMUM 2x6 STRUCTURAL GRADE SOUTHERN PINE LUMBER. REFER TO JAMB CONNECTION SUPPLEMENT FOR ATTACHMENT TO SUPPORTING STRUCTURE.
6. FOR LOW HEAD ROOM LIFT CONDITIONS, TOP BRACKET SHALL BE A LHR TOP BRACKET IN LIEU OF THE BRACKET SHOWN ON THIS DRAWING. SEE LHR, DETAIL A, SHEET 2.
7. FOR LOW HEAD ROOM APPLICATIONS, THE UPPERMOST JAMB BRACKET IS OMITTED EXCEPT ON DOORS < 7' TALL.



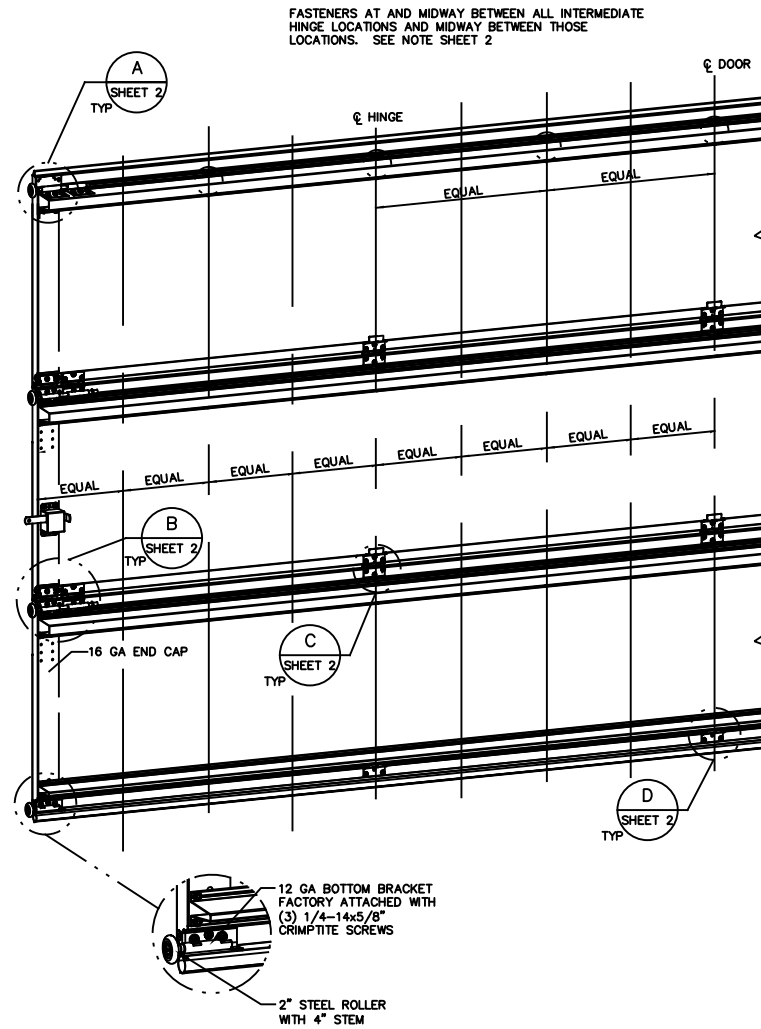
NOTE: (3) SECTION DOOR SHOWN. SEE PAGE 2 FOR U-BAR LOCATIONS FOR DIFFERENT SECTIONED DOORS.

| JAMB BRACKET SCHEDULE | | | |
|-----------------------|-----------------|----------------------------------|---|
| DOOR HEIGHT | NO. OF SECTIONS | NO. OF JAMB BRACKETS (EACH JAMB) | LOCATION OF CENTERLINE OF JAMB BRACKETS MEASURED FROM BOTTOM OF TRACK (ALL DIMENSIONS ± 2") |
| 7'-0" | 3 | 6 | 2", 10", 21", 30", 42", 53", 63" |
| 8'-0" | 4 | 8 | 2", 10", 21", 30", 39", 48", 57", 66", 75" |
| > 8'-0" | | | SEE NOTE BELOW |

NOTE: ALL DOORS GREATER THAN 8' IN HEIGHT REQUIRE USE OF CONTINUOUS WALL ANGLE. SEE SUPPLEMENT TRACK CHART FOR DETAILS.

| SUPERIMPOSED DESIGN PRESSURE LOADS ON SUPPORTING STRUCTURE | | |
|--|-------------|------------------------------|
| DOOR WIDTH | DOOR HEIGHT | UNIFORM LOAD EACH JAMB (PLF) |
| 18'-2" | 7'-0" | +272.5/-304.3 |
| | 8'-0" | +272.5/-304.3 |

PROFESSIONAL ENGINEER'S SEAL PROVIDED ONLY FOR VERIFICATION OF WINDLOAD CONSTRUCTION DETAILS.



- REVISIONS**
- P01 NEW DRAWING CREATED FOR NEW WINDLOAD CODES OPTIONS 8-19-16 GAC
 - P02 ER 31281 REV NOMENCLATURE TO 1144 GRADE STEEL ROLLER 2-3-17 GAC
 - C UPDATED PER PCR32744. UPDATED REV LEVELS TO ALPHABETICAL 12/8/21 SW

This door has been tested per ANSI/DASMA 108



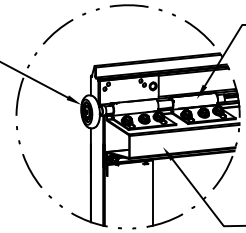
A DIVISION OF OVERHEAD DOOR CORP
3395 ADDISON DRIVE
PENSACOLA, FLORIDA 32514
(850) 474-9890

| STATIC PRESSURE RATINGS | | APPROVED SIZES | | SCALE: N.T.S. | | SIZE: A | |
|---|---------------|---------------------|--------|------------------|---------|---------|--|
| DESIGN (PSF): | +30.00/-33.50 | MAX WIDTH: | 18'-2" | DATE | | NAME | |
| | | MAX HEIGHT: | 14'-0" | DRAWN | 1-20-16 | GAC | |
| IMPACT/CYCLIC RATED (YES/NO): NO | | MAX SECTION HEIGHT: | 28" | CHECKED | | | |
| MODELS 9700/9510 | | | | SHEET 1 OF 2 | | | |
| WINDLOAD SPECIFICATION OPTION CODE 0541 | | | | DRAWING PART NO. | | REV. | |
| | | | | 359178 | | C | |

JOHN E. SCATES, PE
2560 KING ARTHUR #124-54
LEWISVILLE, TX 75056
FL PE 51737 TX PE 56308/F-2203

STANDARD LIFT TRACK

2" 1144 GRADE STEEL ROLLER WITH 9" STEM

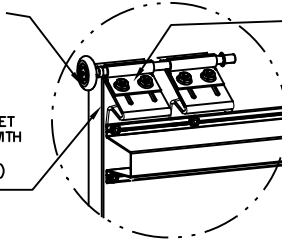


13 GA ROLLER SLIDE ATTACHED TO U-BAR WITH (2) 1/4-20x7/8" SELF DRILLING SCREWS THROUGH SLOTS AND (1) 1/4-20x7/8" SELF DRILLING SCREW THROUGH THE PLATE

16 GA 4" U-BAR ATTACHED WITH (4) AT THE ENDS AND (2) 1/4-20x7/8" SELF DRILLING SCREWS AT AND MIDWAY BETWEEN ALL INTERMEDIATE HINGE LOCATIONS AND MIDWAY BETWEEN THOSE LOCATIONS

LOW HEADROOM TRACK

2" 1144 GRADE STEEL ROLLER WITH 9" STEM WITH PUSHNUT 1/2" FROM SLIDE.



14GA LHR TOP BRACKET ATTACHED TO DOOR WITH (3) 1/4-20 X 11/16" SELF DRILLING AND (2) #12 X 1/2" PHILLIPS SCREWS

13 GA ROLLER SLIDE ATTACHED TO BRACKET WITH (2) 1/4-20 CARRIAGE BOLTS

U-BAR LOCATIONS

(7) SECTION DOORS WITH (7) 4" 16 GA & (1) 3" 18 GA 80 KSI U-BARS LOCATED AS SHOWN (TOP BRACKET REMOVED FOR CLARITY)

(6) SECTION DOORS WITH (6) 4" 16 GA & (1) 3" 18 GA 80 KSI U-BARS LOCATED AS SHOWN (TOP BRACKET REMOVED FOR CLARITY)

(5) SECTION DOORS WITH (5) 4" 16 GA & (1) 3" 18 GA 80 KSI U-BARS LOCATED AS SHOWN (TOP BRACKET REMOVED FOR CLARITY)

(4) SECTION DOORS WITH (4) 4" 16 GA & (1) 3" 18 GA 80 KSI U-BARS LOCATED AS SHOWN (TOP BRACKET REMOVED FOR CLARITY)

(3) SECTION DOORS WITH (3) 4" 16 GA & (1) 3" 18 GA 80 KSI U-BARS LOCATED AS SHOWN (TOP BRACKET REMOVED FOR CLARITY)



UNLESS NOTED OTHERWISE, ALL U-BARS SHALL BE ATTACHED WITH A MINIMUM OF (4) FASTENERS AT EACH END, (2) FASTENERS AT ALL INTERMEDIATE HINGE LOCATIONS, MIDWAY BETWEEN INTERMEDIATE HINGE LOCATIONS, AND MIDWAY BETWEEN THOSE MIDWAY LOCATIONS. (SEE DIAGRAM SHEET 1). ALL FASTENERS USED TO ATTACH U-BARS SHALL BE 1/4-20x7/8" SELF DRILLING.

(2) 15 GA HINGE LEAFS ATTACHED WITH (3) 1/4-14x5/8" CRIMPTITE SCREWS EACH

14 GA HINGE BASE FACTORY ATTACHED TO DOOR WITH (5) 1/4-14x5/8" CRIMPTITE SCREWS

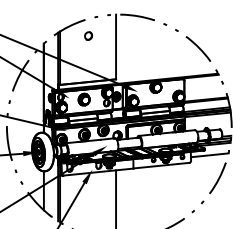
2" 1144 GRADE STEEL ROLLER WITH 9" STEM WITH PUSHNUT 1/2" FROM SLIDE.

11 GA ROLLER CARRIERS (WELDED) ATTACHED TO HINGE BASE USING (2) 1/4-20x9/16" TRACK BOLTS AND NUTS EACH.

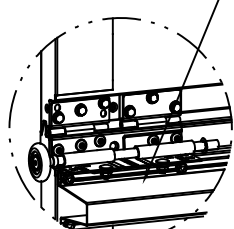
11 GA REINFORCING BRACKET ATTACHED TO HINGE BASE WITH (4) 1/4-20x9/16" TRACK BOLTS & NUTS

15 GA HINGE ATTACHED WITH (6) 1/4-14x5/8" CRIMPTITE SCREWS

DETAIL A



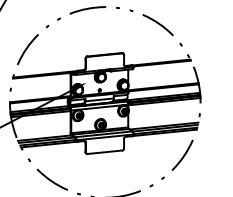
BEFORE U-BAR INSTALLATION



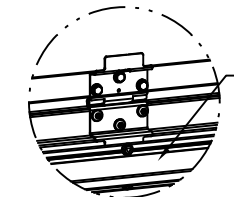
AFTER U-BAR INSTALLATION

POSITION U-BAR OVER REINFORCING BRACKET AND ATTACH WITH (4) 1/4-20x7/8" SELF DRILLING SCREWS

DETAIL B



BEFORE U-BAR INSTALLATION

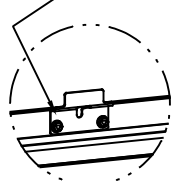


AFTER U-BAR INSTALLATION

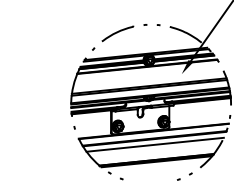
POSITION U-BAR OVER HINGE LEAF AND ATTACH WITH (2) 1/4-20x7/8" SELF DRILLING SCREWS AS SHOWN

DETAIL C

15 GA HINGE BRACKET ATTACHED WITH (2) 1/4-20x7/8" SELF DRILLING SCREWS



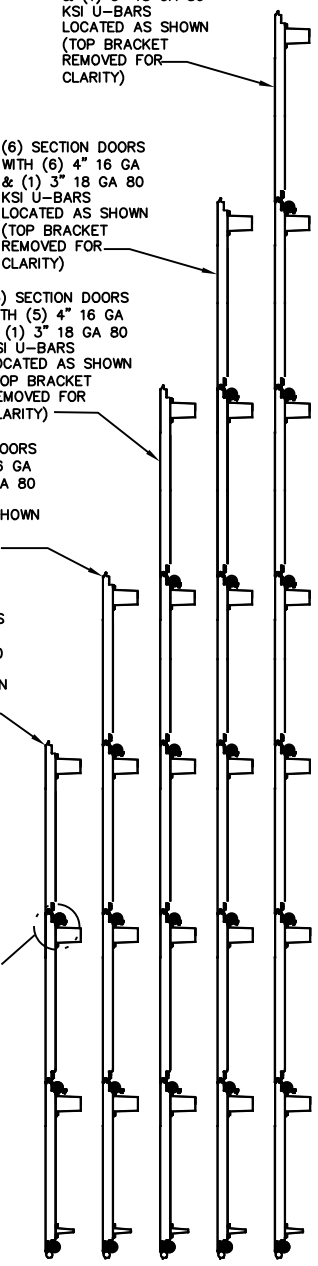
BEFORE U-BAR INSTALLATION



AFTER U-BAR INSTALLATION

POSITION U-BAR OVER HINGE BRACKET AND ATTACH WITH (2) 1/4-20x7/8" SELF DRILLING SCREWS AS SHOWN

DETAIL D



Wayne Dalton
 A DIVISION OF OVERHEAD DOOR CORP
 3395 ADDISON DRIVE
 PENSACOLA, FLORIDA 32514
 (850) 474-9890

| | | | |
|---|-------------------------|-------------------------|---------|
| STATIC PRESSURE RATINGS | APPROVED SIZES | SCALE: N.T.S. | SIZE: A |
| DESIGN (PSF): +30.00/-33.50 | MAX WIDTH: 18'-2" | DATE | NAME |
| IMPACT/CYCLIC RATED (YES/NO): NO | MAX HEIGHT: 14'-0" | DRAWN 1-20-16 | GAC |
| | MAX SECTION HEIGHT: 28" | CHECKED | |
| MODELS 9700/9510 | | SHEET 2 OF 2 | |
| WINDLOAD SPECIFICATION OPTION CODE 0541 | | DRAWING PART NO. 359178 | REV. C |