

NOTES:

1. VINYL OR WOOD DOOR STOP NAILED A MAXIMUM OF 6" O.C. MUST OVERLAP TOP AND BOTH ENDS OF PANELS MINIMUM 7/16" TO MEET NEGATIVE PRESSURES.

2. SLIDE LOCK OR OPERATOR REQUIRED. LOW HEADROOM REQUIRES A LOCK ON THE LEFT AND RIGHT SIDE OF THE DOOR.

3. THE DESIGN OF THE SUPPORTING STRUCTURAL ELEMENTS SHALL BE THE RESPONSIBILITY OF THE PROFESSIONAL OF RECORD FOR THE BUILDING OR STRUCTURE AND IN ACCORDANCE WITH CURRENT BUILDING CODES FOR THE LOADS LISTED ON THIS DRAWING.

4. SECTION STEEL TO HAVE THE FOLLOWING MINIMUM THICKNESS:
EXTERIOR - 27 GA
INTERIOR - 30 GA

5. DOOR JAMB TO BE MINIMUM 2x6 STRUCTURAL GRADE LUMBER AND BE SPRUCE, PINE, OR FIR. REFER TO JAMB CONNECTION SUPPLEMENT FOR ATTACHMENT TO SUPPORTING STRUCTURE.

6. FOR LOW HEAD ROOM LIFT CONDITIONS, TOP BRACKET SHALL BE A LHR TOP BRACKET IN LIEU OF THE BRACKET SHOWN ON THIS DRAWING. SEE LHR, DETAIL A, SHEET 2.

7. 11 GA ROLLER SLIDES WITH WELDED ENDS AND 11 GA REINFORCING BRACKETS REQUIRED FOR DOORS > 8' TALL.

13 GA HORIZ ANGLE

13 GA FLAG ANGLE

5/16x1-5/8" LAG SCREW EACH HOLE

(4) 1/4-20x9/16" TRACK BOLTS & NUTS

15 GA MIN VERT TRACK

5/16x1-5/8" LAG SCREW AT EACH JAMB BRACKET

1/4-20x9/16" TRACK BOLT AND NUT AT EACH JAMB BRACKET

SECURE LOCK STRIKER PLATE (ONLY REQUIRED WITH SLIDE LOCK) ATTACHED TO TRACK WITH (2) 1/4-20x9/16" TRACK BOLTS AND NUTS

SLIDE LOCK EACH END (NOT REQUIRED WITH OPERATOR - SEE NOTE 2)

15 GA JB-1 JAMB BRACKETS. SEE SCHEDULE FOR QUANTITY AND LOCATION.

NOTE: (3) SECTION DOOR SHOWN. SEE PAGE 2 FOR U-BAR LOCATIONS FOR DIFFERENT SECTIONED DOORS.

JAMB BRACKET SCHEDULE

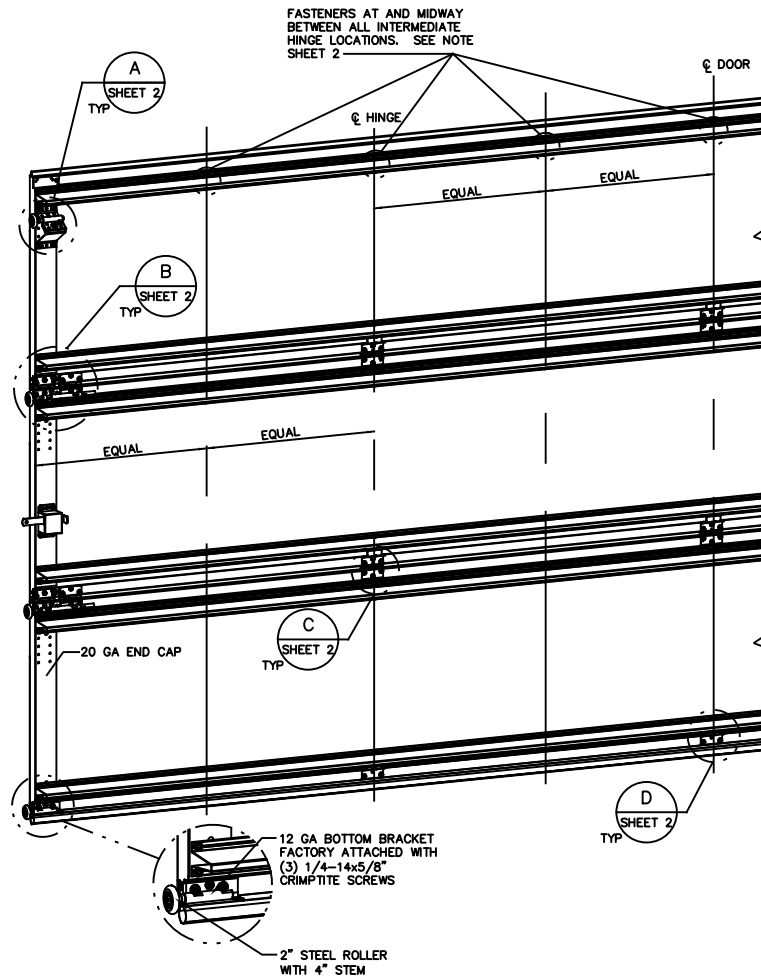
| DOOR HEIGHT | NO. OF SECTIONS | NO. OF JAMB BRACKETS (EACH JAMB) | LOCATION OF CENTERLINE OF JAMB BRACKETS MEASURED FROM BOTTOM OF TRACK (ALL DIMENSIONS ± 2") |
|-------------|-----------------|----------------------------------|---|
| 7'-0" | 3 | 6 | 2", 10", 26", 42", 53", 63" |
| 8'-0" | 4 | 8 | 2", 10", 26", 39", 48", 57", 66", 75" |
| > 8'-0" | | | SEE NOTE BELOW |

NOTE: ALL DOORS GREATER THAN 8' IN HEIGHT REQUIRE USE OF CONTINUOUS WALL ANGLE. SEE SUPPLEMENT TRACK CHART FOR DETAILS.

| SUPERIMPOSED DESIGN PRESSURE LOADS ON SUPPORTING STRUCTURE | | |
|--|-------------|------------------------------|
| DOOR WIDTH | DOOR HEIGHT | UNIFORM LOAD EACH JAMB (PLF) |
| 18'-0" | 7'-0" | +166.5/-186.3 |
| | 8'-0" | +166.5/-186.3 |

JOHN E. SCATES, PE
2560 KING ARTHUR #124-54
LEWISVILLE, TX 75056
FL PE 51737 TX PE 56308/F-2203

PROFESSIONAL ENGINEER'S SEAL PROVIDED ONLY FOR VERIFICATION OF WINDLOAD CONSTRUCTION DETAILS.



REVISIONS

- P3 CHANGES MADE PER ETC LABORATORIES TESTING AND CHANGES TO GENERAL FORMAT 1/17/06 GRT
- P4 UPDATED TITLE BLOCK 4/15/13 GRT
- P5 UPDATED DUE TO TESTING AND CHANGES TO GENERAL FORMAT 8-22-16 GAC
- F UPDATED PER PCR32744. UPDATED REV LEVELS TO ALPHABETICAL 12/8/21 SW

COMPLIES WITH IBC/IRC 2018
This door has been tested per ANSI/DASMA 108

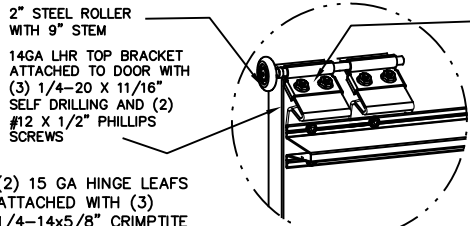
Wayne Dalton
A DIVISION OF OVERHEAD DOOR CORP
3395 ADDISON DRIVE
PENSACOLA, FLORIDA 32514
(850) 474-9890

| STATIC PRESSURE RATINGS | | APPROVED SIZES | | SCALE: N.T.S. | | SIZE: A | |
|---|---------------|----------------|--------|------------------|---------|---------|-----|
| DESIGN (PSF): | +18.50/-20.70 | MAX WIDTH: | 18'-0" | DATE | 1/17/06 | NAME | GRT |
| IMPACT/CYCLIC RATED (YES/NO): | NO | MAX HEIGHT: | 14'-0" | DRAWN | 2/10/06 | MRB | |
| MODELS 9700/9510 | | | | SHEET 1 OF 2 | | | |
| WINDLOAD SPECIFICATION OPTION CODE 0526 | | | | DRAWING PART NO. | 313641 | REV. | F |

LOW HEADROOM TRACK

STANDARD LIFT TRACK

REVISIONS



13 GA ROLLER SLIDE ATTACHED TO BRACKET WITH 5/16-18 BOLT & NUT IN CENTER SLOT AND 1/4-20x9/16" TRACK BOLT & NUT THROUGH ANY TWO ALIGNING HOLES

2" STEEL ROLLER WITH 4" STEM

13 GA COMMERCIAL "A" FRAME TOP BRACKET ATTACHED WITH (4) 1/4-20x7/8" SELF DRILLING SCREWS

13 GA ROLLER SLIDE ATTACHED TO BRACKET WITH 5/16-18 BOLT & NUT IN CENTER SLOT AND 1/4-20x9/16" TRACK BOLT & NUT THROUGH ANY TWO ALIGNING HOLES

U-BAR LOCATIONS (7) SECTION DOORS WITH (14) 3" 20 GA 80 KSI U-BARS LOCATED AS SHOWN (TOP BRACKET REMOVED FOR CLARITY)

(2) 15 GA HINGE LEAFS ATTACHED WITH (3) 1/4-14x5/8" CRIMPTITE SCREWS EACH

14 GA HINGE BASE FACTORY ATTACHED TO DOOR WITH (5) 1/4-14x5/8" CRIMPTITE SCREWS

2" STEEL ROLLER WITH 9" STEM
13 GA ROLLER CARRIERS FACTORY ATTACHED TO HINGE BASE AND REINFORCING BRACKET. (EXCEPTION: NOTE #7)

13 GA REINFORCING BRACKET ATTACHED BENEATH HINGE BASE. (EXCEPTION: NOTE #7)

15 GA HINGE ATTACHED WITH (6) 1/4-14x5/8" CRIMPTITE SCREWS (3 OF WHICH ARE FACTORY ATTACHED)

DETAIL A

POSITION U-BAR OVER REINFORCING BRACKET AND ATTACH WITH (3) 1/4-20x7/8" SELF DRILLING SCREWS AS SHOWN (2 OF WHICH ATTACH THROUGH REINFORCING BRACKET)

DETAIL B

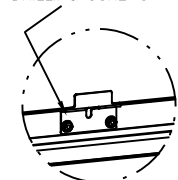
POSITION U-BAR ADJACENT TO HINGE LEAF AND ATTACH WITH (2) 1/4-14x5/8" CRIMPTITE SCREWS AS SHOWN

POSITION U-BAR OVER HINGE LEAF AND ATTACH WITH (1) 1/4-14x5/8" CRIMPTITE SCREW AND (1) 1/4-20x7/8" SELF DRILLING SCREW AS SHOWN (SELF DRILLING SCREW ATTACHES THROUGH HINGE LEAF)

DETAIL C

POSITION U-BAR OVER HINGE BRACKET AND ATTACH WITH (1) 1/4-14x5/8" CRIMPTITE SCREW AND (1) 1/4-20x7/8" SELF DRILLING SCREW AS SHOWN (SELF DRILLING SCREW ATTACHES THROUGH HINGE BRACKET)

15 GA HINGE BRACKET ATTACHED WITH (2) 1/4-20x7/8" SELF DRILLING SCREWS



BEFORE U-BAR INSTALLATION

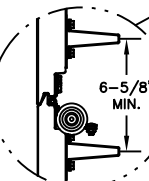


AFTER U-BAR INSTALLATION

DETAIL D

UNLESS NOTED OTHERWISE, ALL U-BARS SHALL BE ATTACHED WITH A MINIMUM OF (2) FASTENERS AT EACH END AND AT ALL INTERMEDIATE HINGE LOCATIONS (OR IN LINE WITH INTERMEDIATE HINGE LOCATIONS IF U-BAR IS NOT LOCATED AT A HINGE). ALL FASTENERS USED TO ATTACH U-BARS SHALL BE 1/4-14x5/8" CRIMPTITE SCREWS EXCEPT 1/4-20x7/8" SELF DRILLING SCREWS SHALL BE USED AT END CAPS AND WHERE FASTENING THROUGH HINGE LEAFS OR BRACKETS.

NOTE: U-BARS SHOULD BE INSTALLED LEVEL ACROSS DOOR AND MAINTAIN A MINIMUM CENTERLINE SPACING OF 6-5/8" BETWEEN U-BARS ON ADJACENT SECTIONS



(6) SECTION DOORS WITH (12) 3" 20 GA 80 KSI U-BARS LOCATED AS SHOWN (TOP BRACKET REMOVED FOR CLARITY)

(5) SECTION DOORS WITH (10) 3" 20 GA 80 KSI U-BARS LOCATED AS SHOWN (TOP BRACKET REMOVED FOR CLARITY)

(4) SECTION DOORS WITH (8) 3" 20 GA 80 KSI U-BARS LOCATED AS SHOWN (TOP BRACKET REMOVED FOR CLARITY)

(3) SECTION DOORS WITH (6) 3" 20 GA 80 KSI U-BARS LOCATED AS SHOWN (TOP BRACKET REMOVED FOR CLARITY)



| | | | | | | | |
|---|---------------|---------------------|--------|---------------|---------|------------------|------|
| STATIC PRESSURE RATINGS | | APPROVED SIZES | | SCALE: N.T.S. | | SIZE: A | |
| DESIGN (PSF): | +18.50/-20.70 | MAX WIDTH: | 18'-0" | DATE | | NAME | |
| | | MAX HEIGHT: | 14'-0" | DRAWN | 1/17/06 | GRT | |
| IMPACT/CYCLIC RATED (YES/NO): | NO | MAX SECTION HEIGHT: | 28" | CHECKED | 2/10/06 | MRB | |
| MODELS 9700/9510 | | | | | | SHEET 2 OF 2 | |
| WINDLOAD SPECIFICATION OPTION CODE 0526 | | | | | | DRAWING PART NO. | REV. |
| | | | | | | 313641 | F |