

BRAND	MODEL
CLOPAY	904, 904U, AX, AXU
IDEAL	C4AL, C4ALU

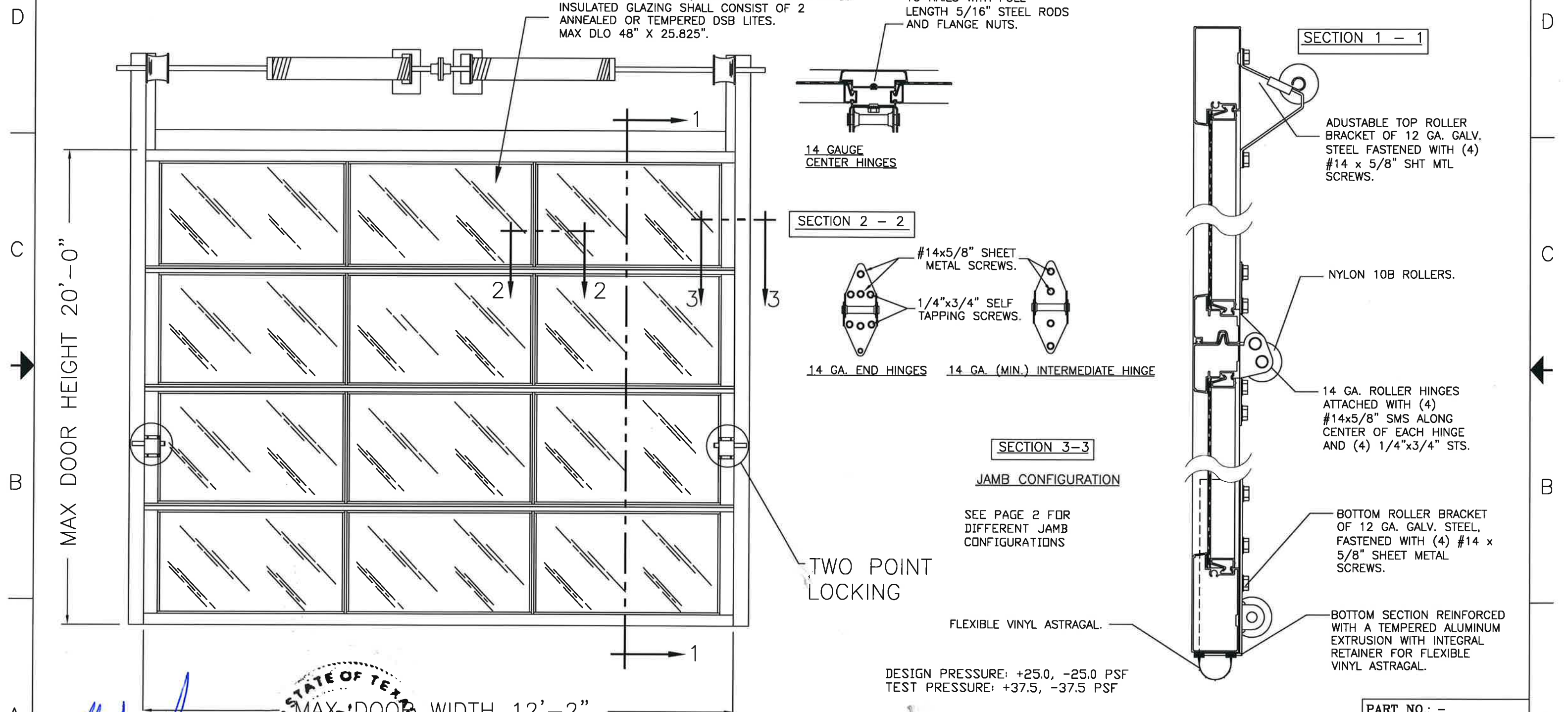
THIS PRODUCT COMPLIES WITH THE 2018 IBC/IRC.

REVISIONS					
REV. NO.	ZONE	DATE	ECN NO.	APPVD	DESCRIPTION
00	-	4/7/22	-	JDW	RELEASED FOR PRODUCTION

MADE FROM 6063-T5 ALUMINUM.

DSB LITES OR BETTER, ANNEALED OR TEMPERED. INSULATED GLAZING SHALL CONSIST OF 2 ANNEALED OR TEMPERED DSB LITES. MAX DLO 48" X 25.825".

CENTER STILES FASTENED TO RAILS WITH FULL LENGTH 5/16" STEEL RODS AND FLANGE NUTS.



DESIGN ENGINEER:
MARK WESTERFIELD, P.E.
FLORIDA P.E. #48495
NC P.E. #23832, TEXAS P.E. #91513



MANUFACTURING PRODUCT CODE
C-AL2-1F499

NOTICE: Confidential/Proprietary information of CLOPAY CORPORATION is contained herein and may not be disclosed, used, duplicated, made available, or distributed without its prior consent. Failure to observe this notice may result in liability for any damages and losses resulting therefrom.

Third Angle Projection

Unless Stated Otherwise TOLERANCES are
.0 = ±.031
.00 = ±.015
.000 = ±.005
.0000 = ±.001
Degrees = ±1/2"

Unless Stated Otherwise DIMENSIONS ARE IN INCHES.

		8585 Duke Boulevard Mason, OH 45040 USA Tel. No. 513-770-4800 Fax No. 513-770-4853	PART NO.: - CLOPAY WINDLOAD RATING W4
DESCRIPTION: M/N 904 12' WIDE DES. +25/-25 PSF			
DRAWN BY: J. WHEELER	DATE: 4/7/22	SCALE: NTS	DWG. SIZE B
CHECKED BY: SH	DATE: CHKD_DT	SHEET 1 OF 2	REV. NO. 00
DWG. NO.: 105334			

4

3

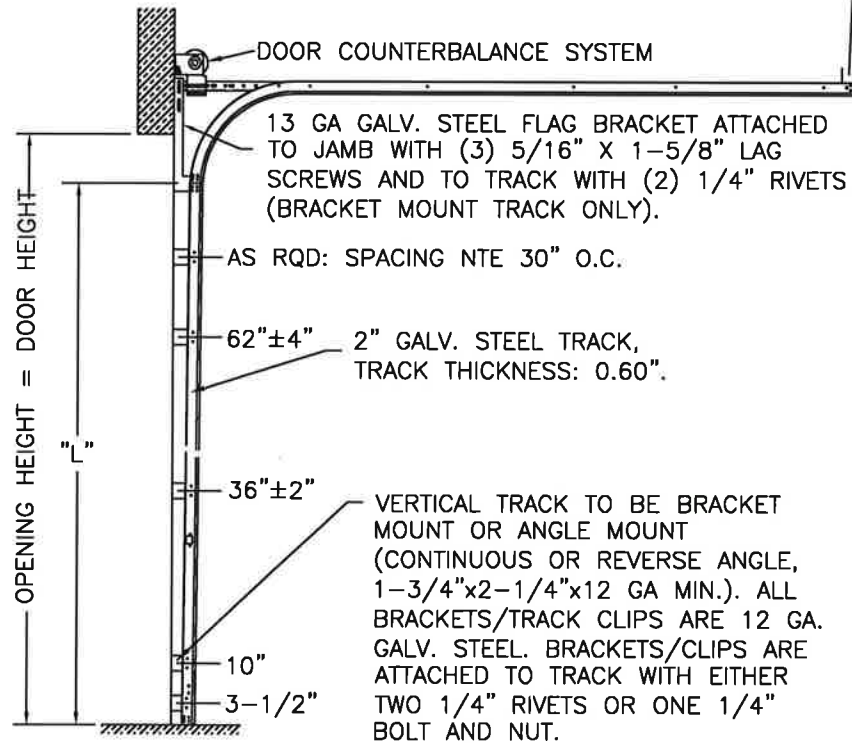
2

1

REVISIONS

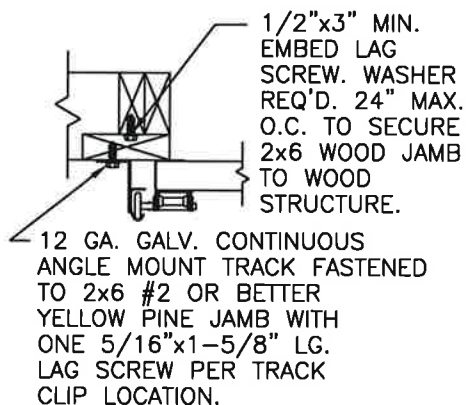
REV. NO.	ZONE:	DATE:	ECN NO.	APPVD:	DESCRIPTION
00	-	4/7/22	-	JDW	SEE REVISION HISTORY ON SHEET 1

2" TRACK CONFIGURATION.



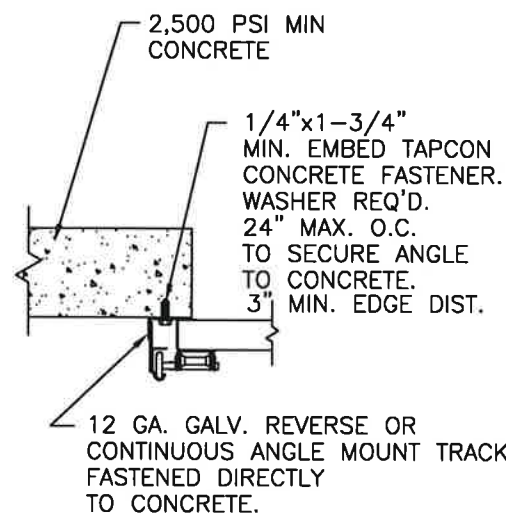
HORIZONTAL TRACK SUPPORT BY DOOR INSTALLER (TO SUIT).

WOOD JAMBS



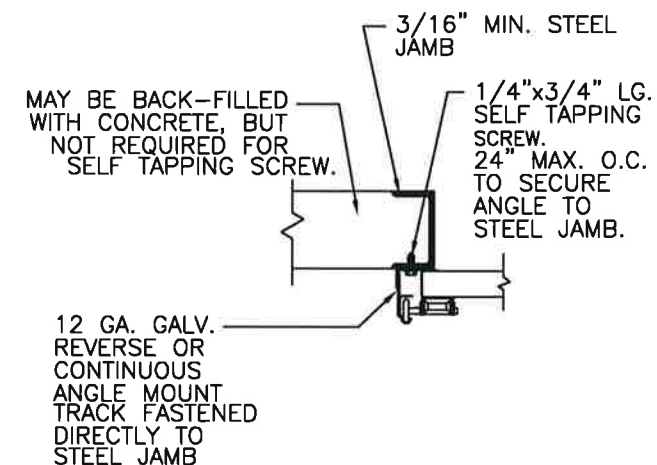
SECTION 3-3

CONCRETE JAMBS



SECTION 3-3

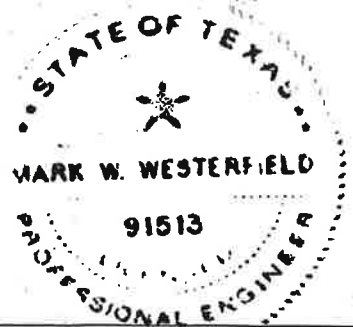
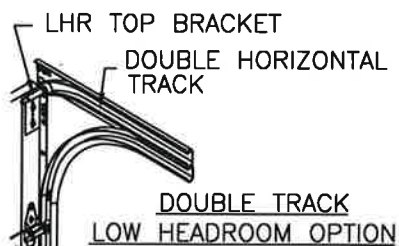
STEEL JAMBS



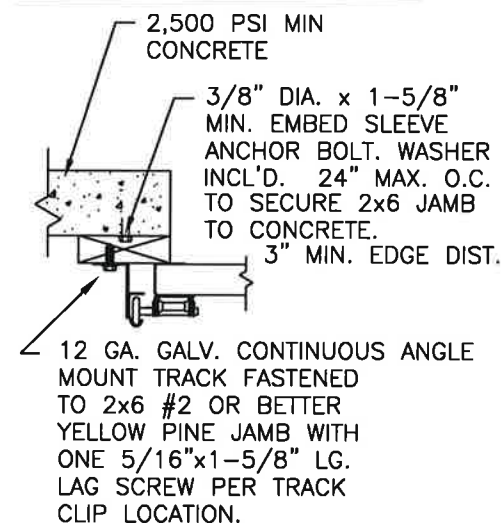
SECTION 3-3

DOOR HEIGHT	"L"
6'-6"	70"
7'-0"	76"
7'-6"	82"
8'-0"	88"
8'-6"	94"
9'-0"	100"
9'-6"	106"
10'-0"	112"
10'-6"	118"
11'-0"	124"
11'-6"	130"
12'-0"	136"
12'-6"	142"
13'-0"	148"
13'-6"	154"
14'-0"	160"
14'-6"	166"
15'-0"	172"
15'-6"	178"
16'-0"	184"
16'-6"	190"
17'-0"	196"
17'-6"	202"
18'-0"	208"
18'-6"	214"
19'-0"	220"
19'-6"	226"
20'-0"	232"

NOTE DOUBLE TRACK HEADROOM, HI-LIFT TRACK, FOLLOW-THE-ROOF TRACK, AND VERTICAL LIFT TRACK ARE AVAILABLE OPTIONS. TRACK CONFIGURATION ABOVE THE DOOR OPENING DOES NOT AFFECT THE WIND LOAD RATING.

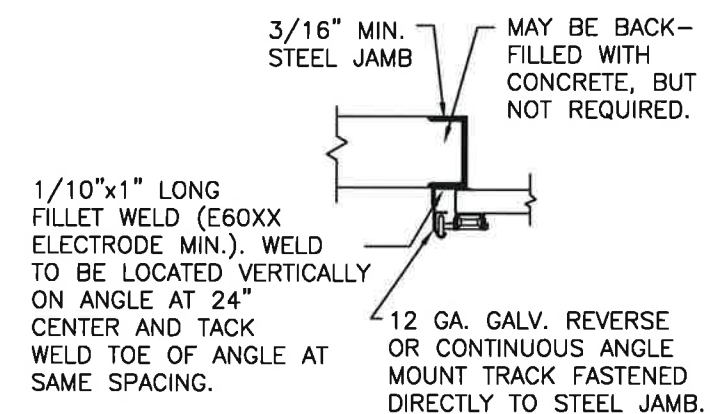


WOOD JAMB ON CONCRETE



SECTION 3-3

STEEL JAMBS



SECTION 3-3

DESIGN ENGINEER: MARK WESTERFIELD, P.E. FLORIDA P.E. #48495 NC P.E. #23832, TEXAS P.E. #91513

NOTICE: Confidential/Proprietary information of CLOPAY CORPORATION is contained herein and may not be disclosed, used, duplicated, made available, or distributed without its prior consent. Failure to observe this notice may result in liability for any damages and losses resulting therefrom.

Unless Stated Otherwise TOLERANCES are .0 = ±.031 .00 = ±.015 .000 = ±.005 .0000 = ±.001 Degrees = ±1/2"

Third Angle Projection

Unless Stated Otherwise DIMENSIONS ARE IN INCHES.



8585 Duke Boulevard Mason, OH 45040 USA Tel. No. 513-770-4800 Fax No. 513-770-4853

PART NO.: -

DESCRIPTION: M/N 904 12' WIDE DES. +25/-25 PSF

DRAWN BY: J. WHEELER DATE: 4/7/22 SCALE: NTS DWG. B

CHECKED BY: SH DATE: CHKD_DT SHEET 2 OF 2 SIZE B

DWG. NO.: 105334 REV. NO. 00

4

3

2

1