



## Supplemental Wind Load Instructions

### Sandwich Doors: Skyline, Planks

 <b>CAUTION</b>	<p><b>Higher wind pressures and larger doors require additional reinforcement.</b></p> <p><b>Premature failure of door system may result from improper application.</b></p> <p><b>See chart in lower left corner of drawing sheet one for the approved wind pressures and door sizes.</b></p>
--	---

 <b>WARNING</b>	<p><b>These instructions do not contain basic door installation steps and related safety information.</b></p> <p><b>Failure to follow basic installation steps and related safety information may result in injury or death.</b></p> <p><b>Door installers must follow a primary instruction manual for basic door installation steps and related safety information.</b></p>
--	---

The correct selection of door and framing materials in adherence with local building code directives is the responsibility of the building owner/designer. Use of a reinforced garage door does not constitute automatic compliance with any building code. Local building code officials determine compliance criteria.

A locking system must be installed if the door is not electrically operated.

See drawing for stop molding requirements, when door is not more than 1" wider than opening. When using stop molding, secure molding with minimum 8d nails or 2-1/2" long screws.

Professional Engineer's seal provided only for verification of wind load construction details. Printed copies of this document are not considered signed and sealed and the signature must be verified on any electronic copies.

John E. Scates, P.E.  
 2560 King Arthur, Ste 124-54  
 Lewisville, Texas 75056  
 TXPE 56308, F-2203  
 Florida P.E. # 51737

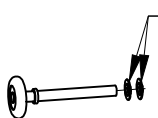
**For Use With Drawing Number  
Z7i-20-12533**

**Strut Placement**

Section Number	Door Height								
	6'-0" to 8'-0"	8'-3" to 10'-0"	10'-3" to 12'-0"	12'-3" to 14'-0"	14'-3" to 16'-0"	16'-3" to 18'-0"	18'-3" to 20'-0"	20'-3" to 22'-0"	22'-3" to 24'-0"
12	N/A	N/A	N/A	N/A	N/A	N/A	N/A	N/A	1 at Detail A 1 at Detail B 1 at Detail C
11	N/A	N/A	N/A	N/A	N/A	N/A	N/A	1 at Detail A 1 at Detail B 1 at Detail C	1 at Detail D 1 at Detail B 1 at Detail C
10	N/A	N/A	N/A	N/A	N/A	N/A	1 at Detail A 1 at Detail B 1 at Detail C	1 at Detail D 1 at Detail B 1 at Detail C	1 at Detail D 1 at Detail B 1 at Detail C
9	N/A	N/A	N/A	N/A	N/A	1 at Detail A 1 at Detail B 1 at Detail C	1 at Detail D 1 at Detail C	1 at Detail D 1 at Detail C	1 at Detail D 1 at Detail C
8	N/A	N/A	N/A	N/A	1 at Detail A 1 at Detail B 1 at Detail C	1 at Detail D 1 at Detail B 1 at Detail C	1 at Detail D 1 at Detail B 1 at Detail C	1 at Detail D 1 at Detail B 1 at Detail C	1 at Detail D 1 at Detail B 1 at Detail C
7	N/A	N/A	N/A	1 at Detail A 1 at Detail B 1 at Detail C	1 at Detail D 1 at Detail C	1 at Detail D 1 at Detail C	1 at Detail D 1 at Detail C	1 at Detail D 1 at Detail C	1 at Detail D 1 at Detail C
6	N/A	N/A	1 at Detail A 1 at Detail B 1 at Detail C	1 at Detail D 1 at Detail B 1 at Detail C	1 at Detail D 1 at Detail B 1 at Detail C	1 at Detail D 1 at Detail B 1 at Detail C	1 at Detail D 1 at Detail B 1 at Detail C	1 at Detail D 1 at Detail B 1 at Detail C	1 at Detail D 1 at Detail B 1 at Detail C
5	N/A	1 at Detail A 1 at Detail B 1 at Detail C	1 at Detail D 1 at Detail C	1 at Detail D 1 at Detail C	1 at Detail D 1 at Detail C	1 at Detail D 1 at Detail C	1 at Detail D 1 at Detail C	1 at Detail D 1 at Detail C	1 at Detail D 1 at Detail C
4	1 at Detail A 1 at Detail B 1 at Detail C	1 at Detail D 1 at Detail B 1 at Detail C	1 at Detail D 1 at Detail B 1 at Detail C	1 at Detail D 1 at Detail B 1 at Detail C	1 at Detail D 1 at Detail B 1 at Detail C	1 at Detail D 1 at Detail B 1 at Detail C	1 at Detail D 1 at Detail B 1 at Detail C	1 at Detail D 1 at Detail B 1 at Detail C	1 at Detail D 1 at Detail B 1 at Detail C
3	1 at Detail D 1 at Detail C	1 at Detail D 1 at Detail C	1 at Detail D 1 at Detail C	1 at Detail D 1 at Detail C	1 at Detail D 1 at Detail C	1 at Detail D 1 at Detail C	1 at Detail D 1 at Detail C	1 at Detail D 1 at Detail C	1 at Detail D 1 at Detail C
2	1 at Detail D 1 at Detail C	1 at Detail D 1 at Detail C	1 at Detail D 1 at Detail C	1 at Detail D 1 at Detail C	1 at Detail D 1 at Detail C	1 at Detail D 1 at Detail C	1 at Detail D 1 at Detail C	1 at Detail D 1 at Detail C	1 at Detail D 1 at Detail C
1	1 at Detail D 1 at Detail B 1 at Detail E	1 at Detail D 1 at Detail B 1 at Detail E	1 at Detail D 1 at Detail B 1 at Detail E	1 at Detail D 1 at Detail B 1 at Detail E	1 at Detail D 1 at Detail B 1 at Detail E	1 at Detail D 1 at Detail B 1 at Detail E	1 at Detail D 1 at Detail B 1 at Detail E	1 at Detail D 1 at Detail B 1 at Detail E	1 at Detail D 1 at Detail B 1 at Detail E

**Push Nut Detail (use on all rollers)**

use 3/8" I. D. on bottom fixture roller stem  
use 7/16" I. D. on end hinge and top fixture roller stems

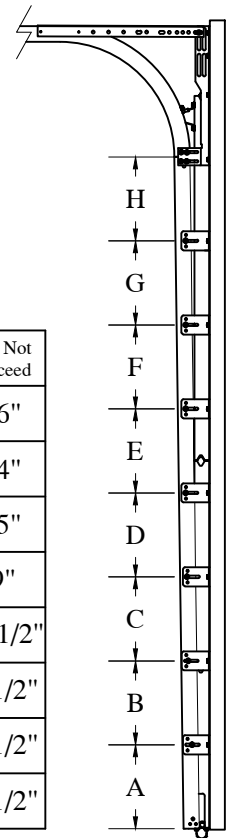


Push nuts: Slide roller into fixture and tap push nut onto roller stem using 1/2" socket and hammer. Leave 1/8" to 1/4" space between push nut and fixture. Install additional pushnut on all rollers.

**Track Bracket Spacing**

Track bracket spacing shown for doors up to four sections high. Additional door sections may be added for maximum door height depicted on door drawing. Track brackets must be added (per track) for each section and spaced at a distance not greater than the corresponding section height (see door drawing for required quantities).

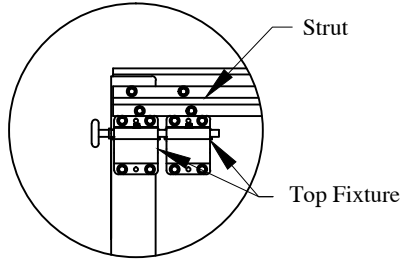
	Do Not Exceed
H	16"
G	14"
F	15"
E	9"
D	14-1/2"
C	9-1/2"
B	6-1/2"
A	3-1/2"



+/- 3" tolerance

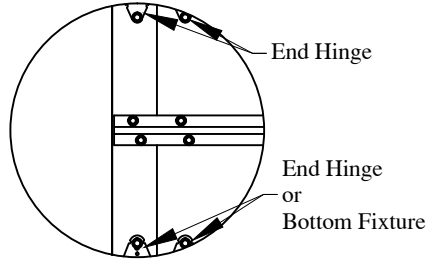
For Use With Drawing Number  
Z7i-20-12533

**Strut Placement Detail**



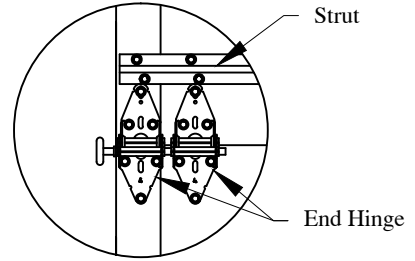
Strut above top fixture

**Detail A**



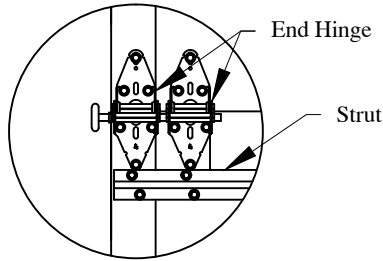
Strut in center of section

**Detail B**



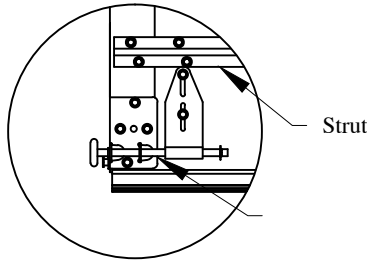
Strut above hinge

**Detail C**



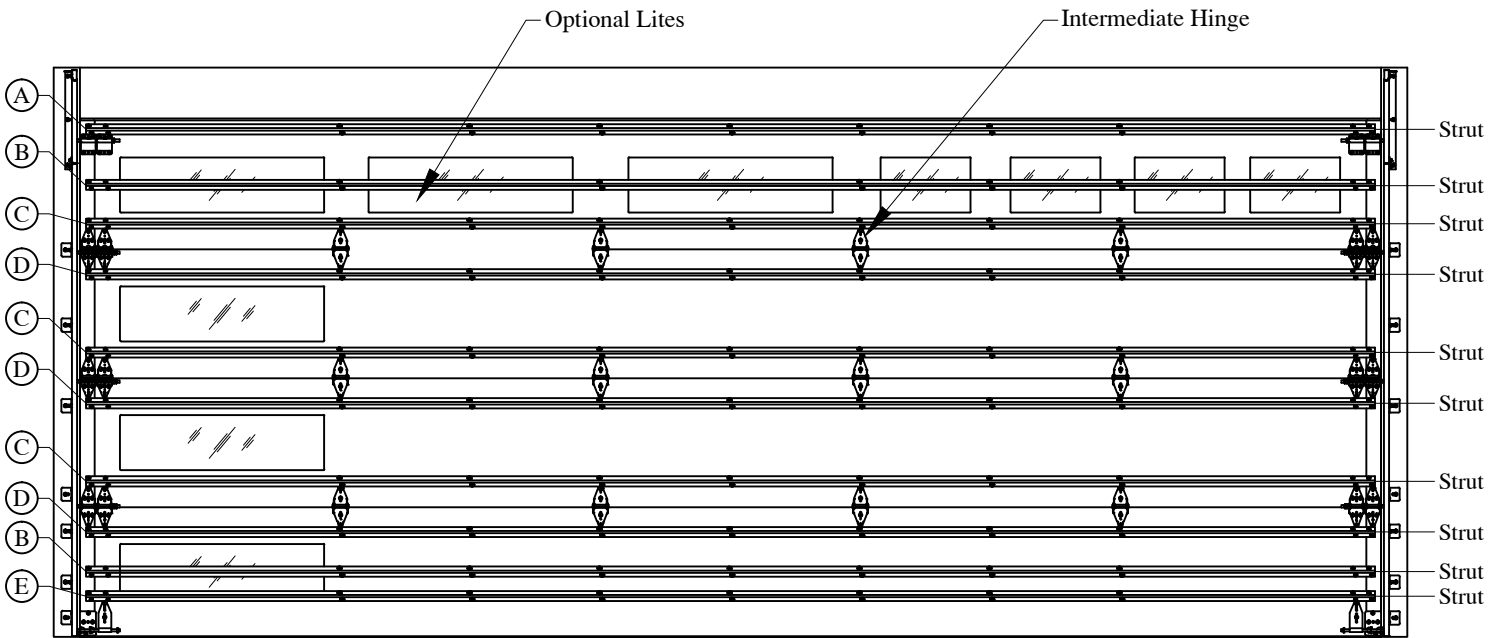
Strut below hinge

**Detail D**

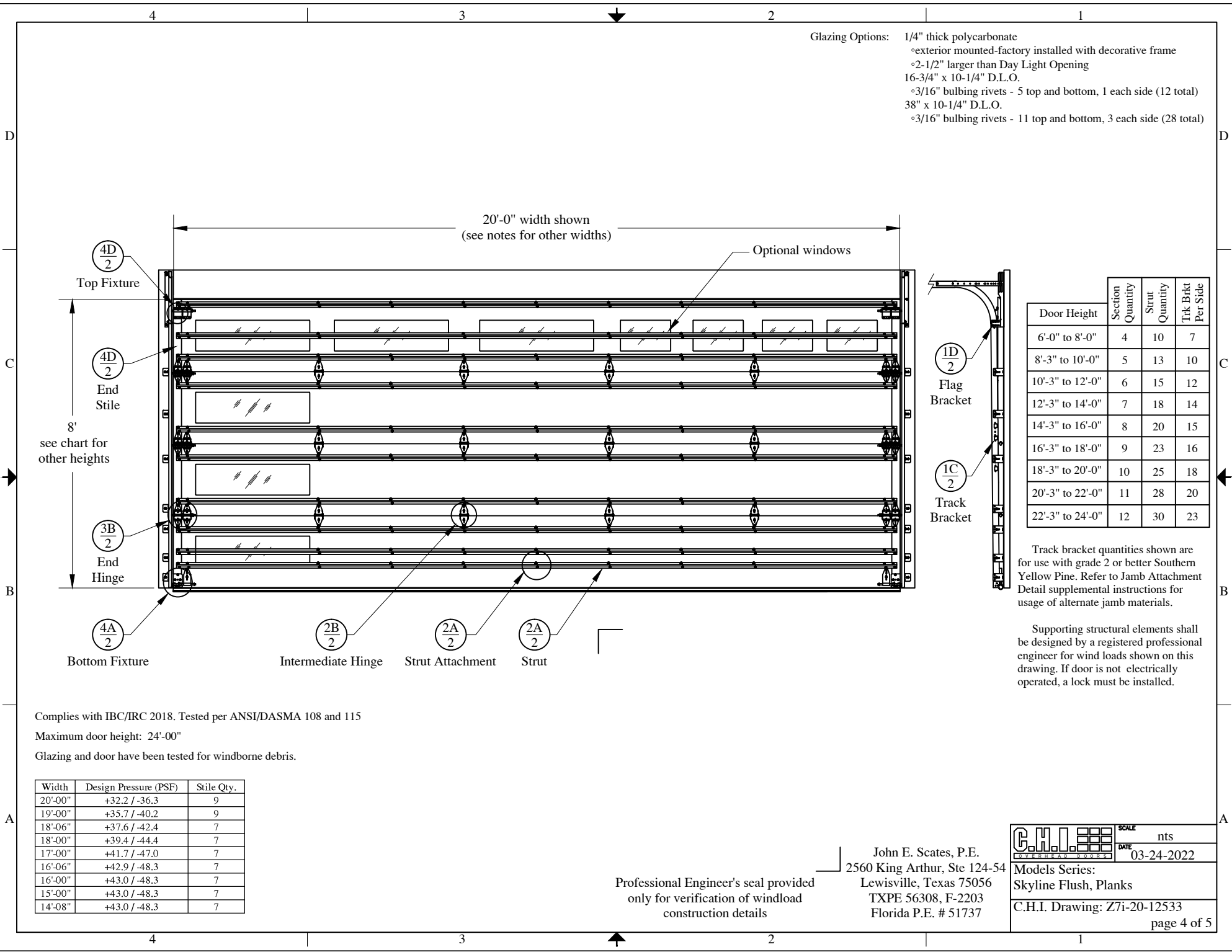


Strut above bottom fixture

**Detail E**



Glazing Options: 1/4" thick polycarbonate  
 ◦ exterior mounted-factory installed with decorative frame  
 ◦ 2-1/2" larger than Day Light Opening  
 16-3/4" x 10-1/4" D.L.O.  
 ◦ 3/16" bulbing rivets - 5 top and bottom, 1 each side (12 total)  
 38" x 10-1/4" D.L.O.  
 ◦ 3/16" bulbing rivets - 11 top and bottom, 3 each side (28 total)



Door Height	Section Quantity	Strut Quantity	Trk Brkt Per Side
6'-0" to 8'-0"	4	10	7
8'-3" to 10'-0"	5	13	10
10'-3" to 12'-0"	6	15	12
12'-3" to 14'-0"	7	18	14
14'-3" to 16'-0"	8	20	15
16'-3" to 18'-0"	9	23	16
18'-3" to 20'-0"	10	25	18
20'-3" to 22'-0"	11	28	20
22'-3" to 24'-0"	12	30	23

Track bracket quantities shown are for use with grade 2 or better Southern Yellow Pine. Refer to Jamb Attachment Detail supplemental instructions for usage of alternate jamb materials.

Supporting structural elements shall be designed by a registered professional engineer for wind loads shown on this drawing. If door is not electrically operated, a lock must be installed.

Complies with IBC/IRC 2018. Tested per ANSI/DASMA 108 and 115

Maximum door height: 24'-00"

Glazing and door have been tested for windborne debris.

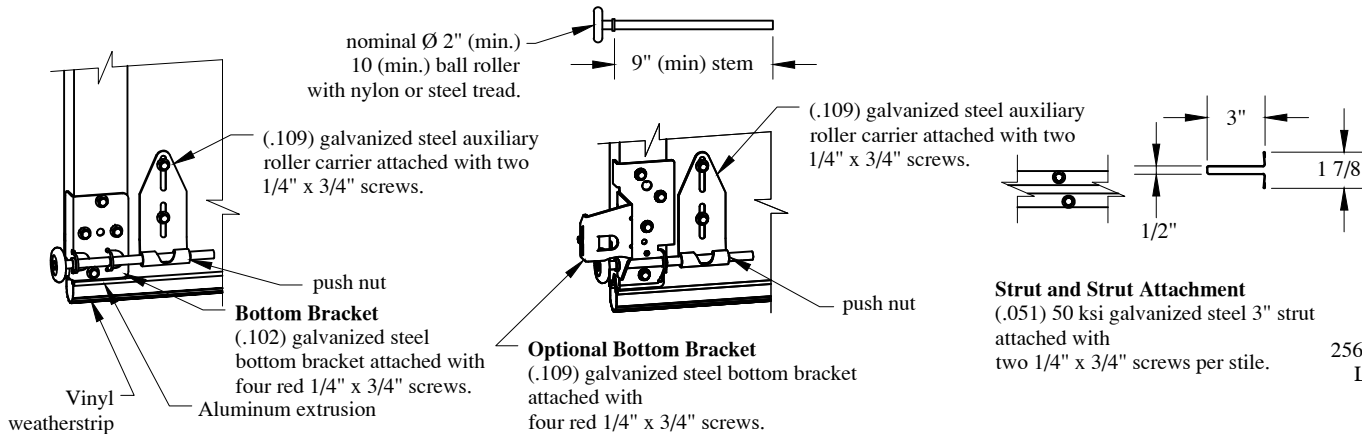
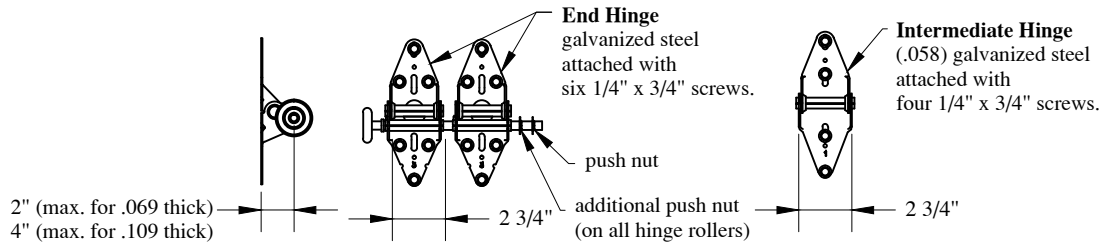
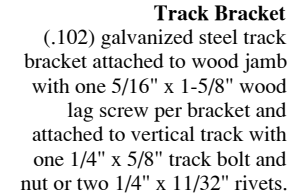
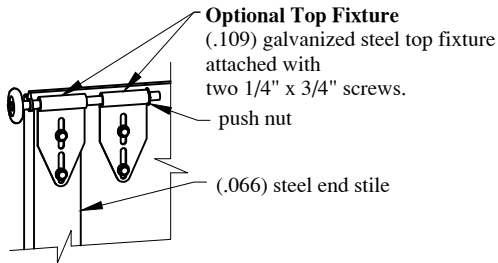
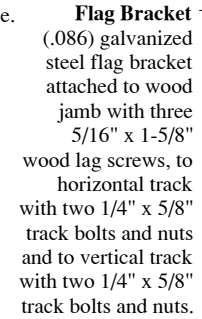
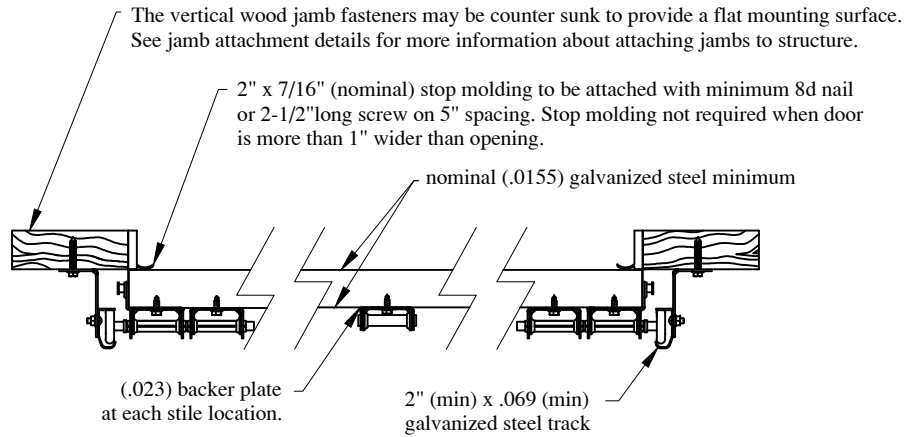
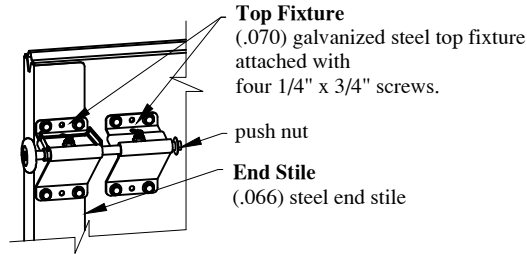
Width	Design Pressure (PSF)	Stile Qty.
20'-00"	+32.2 / -36.3	9
19'-00"	+35.7 / -40.2	9
18'-06"	+37.6 / -42.4	7
18'-00"	+39.4 / -44.4	7
17'-00"	+41.7 / -47.0	7
16'-06"	+42.9 / -48.3	7
16'-00"	+43.0 / -48.3	7
15'-00"	+43.0 / -48.3	7
14'-08"	+43.0 / -48.3	7

Professional Engineer's seal provided only for verification of windload construction details

John E. Scates, P.E.  
 2560 King Arthur, Ste 124-54  
 Lewisville, Texas 75056  
 TXPE 56308, F-2203  
 Florida P.E. # 51737

	SCALE	nts
	DATE	03-24-2022
Models Series: Skyline Flush, Planks		
C.H.I. Drawing: Z7i-20-12533		
page 4 of 5		

Details on some views may have been omitted for clarity.



Professional Engineer's seal provided only for verification of windload construction details

John E. Scates, P.E.  
2560 King Arthur, Ste 124-54  
Lewisville, Texas 75056  
TXPE 56308, F-2203  
Florida P.E. # 51737

<b>C.H.I.</b>	SCALE	nts
	DATE	03-24-2022
Models Series: Skyline Flush, Planks		
C.H.I. Drawing: Z7i-20-12533		
page 5 of 5		