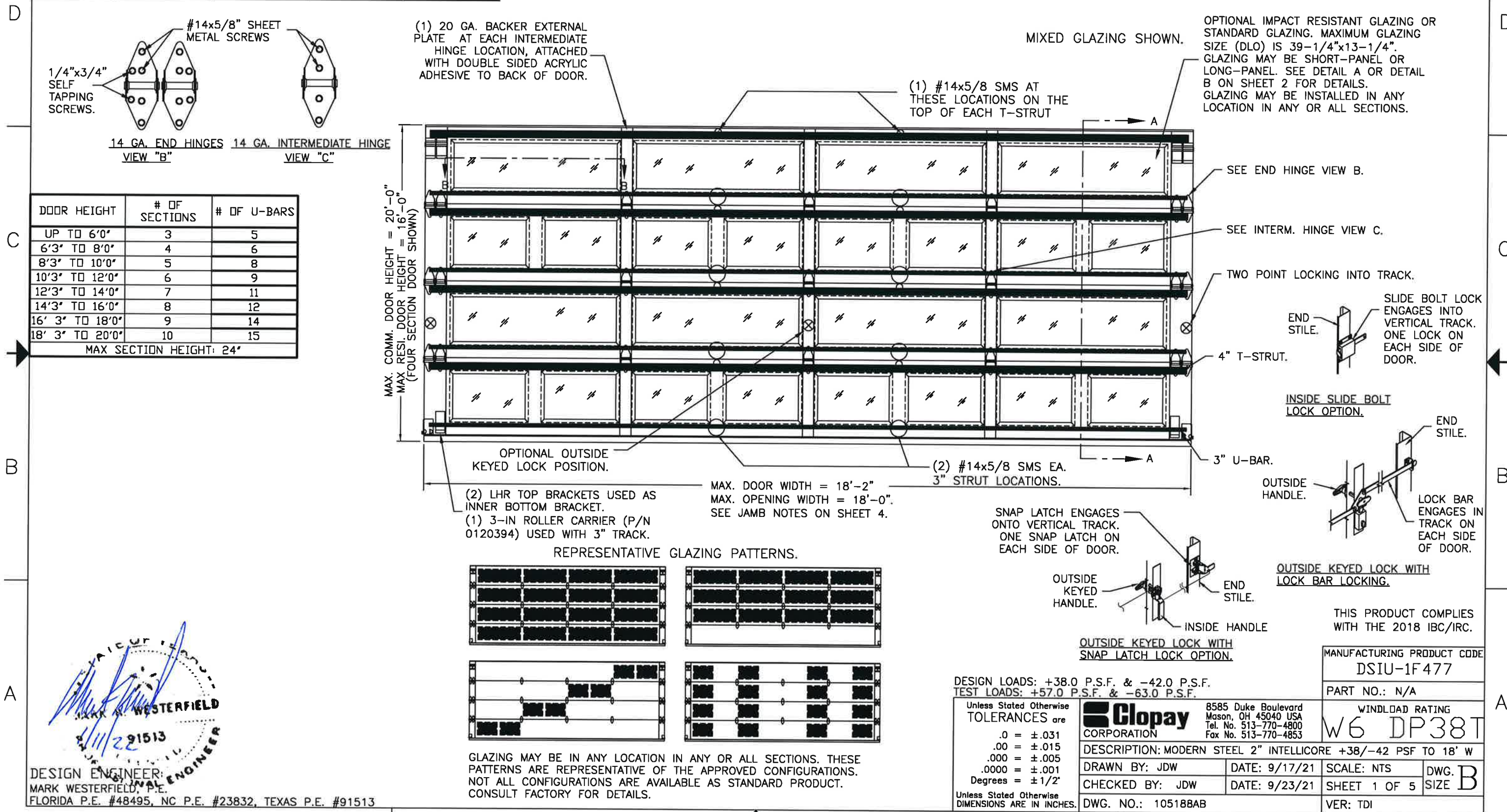


BRAND	MODERN STEEL		COMMERCIAL DOORS	
	FLUSH	GROOVED	FLUSH	GROOVED
CLOPAY	9208, HDPC2	9209, HDPCR2	3728	3729
HOLMES	7208	7209	--	C7R20

SEE SHEET 5 FOR "CANYON RIDGE MODERN SERIES" MODELS.

SHEET:  
1 OF 5

REVISIONS						DESCRIPTION
REV. NO.	ZONE:	DATE:	ECN NO.	APPVD:		
00	-	09/2021	-	JDW	INITIAL RELEASE.	



DESIGN ENGINEER:  
MARK WESTERFIELD, P.E.  
FLORIDA P.E. #48495, NC P.E. #23832, TEXAS P.E. #91513

DESIGN LOADS: +38.0 P.S.F. & -42.0 P.S.F.  
TEST LOADS: +57.0 P.S.F. & -63.0 P.S.F.

Unless Stated Otherwise  
TOLERANCES are  
.0 = ±.031  
.00 = ±.015  
.000 = ±.005  
.0000 = ±.001  
Degrees = ±1/2"  
Unless Stated Otherwise  
DIMENSIONS ARE IN INCHES.

**Glopay** CORPORATION  
8585 Duke Boulevard  
Mason, OH 45040 USA  
Tel. No. 513-770-4800  
Fax No. 513-770-4853

THIS PRODUCT COMPLIES WITH THE 2018 IBC/IRC.			
MANUFACTURING PRODUCT CODE DSIU-1F477			
PART NO.: N/A			
WINDLOAD RATING W6 DP38T			
DESCRIPTION: MODERN STEEL 2" INTELICORE +38/-42 PSF TO 18' W	DRAWN BY: JDW	DATE: 9/17/21	SCALE: NTS
CHECKED BY: JDW	DATE: 9/23/21	SHEET 1 OF 5	DWG. B
DWG. NO.: 105188AB	VER: TDI		

BRAND	MODERN STEEL		COMMERCIAL DOORS	
	FLUSH	GROOVED	FLUSH	GROOVED
CLOPAY	9208, HDPC2	9209, HDPCR2	3728	3729
HOLMES	7208	7209	--	C7R20

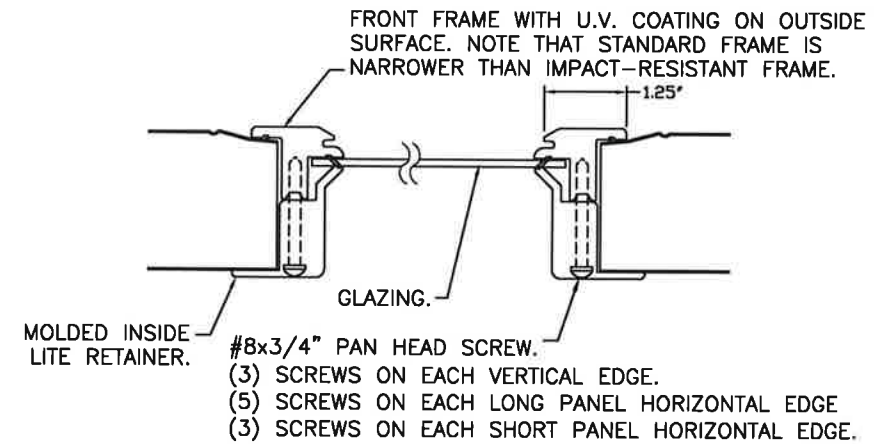
SEE SHEET 5 FOR "CANYON RIDGE MODERN SERIES" MODELS.

SHEET:  
2 OF 5

REVISIONS					
REV. NO.	ZONE	DATE	ECN NO.	APPVD:	DESCRIPTION
00	-	-	-	-	SEE REVISION HISTORY ON SHEET ONE.

**STANDARD ASSEMBLY CONSTRUCTION:**  
 OPTIONAL DSB OR 1/8" ACRYLIC LITES AVAILABLE. OPTIONAL ACRYLIC GLAZING IS PLASKOLITE OPTIX OR LUCITE CP APPROVED CC2 PLASTIC IN ACCORDANCE WITH IBC/FBC 2606.  
 THE ENTIRE DOOR ASSEMBLY INSTALLED IN COMPLIANCE WITH THIS SECTION MEETS THE WIND LOAD REQUIREMENTS OF THE FLORIDA BUILDING CODE OR INTERNATIONAL BUILDING CODE BUT DOES NOT MEET THE IMPACT RESISTANT REQUIREMENT FOR WINDBORNE DEBRIS REGIONS (REF. CHAPTER 16 FBC/IBC).

**SECTION B-B (NON-IMPACT RESISTANT GLAZING OPTION)**



**STANDARD ASSEMBLY DETAILS  
 DETAIL B**



DESIGN ENGINEER  
 MARK WESTERFIELD, P.E.  
 FLORIDA P.E. #48495, NC P.E. #23832, TEXAS P.E. #91513

DESIGN LOADS: +38.0 P.S.F. & -42.0 P.S.F.  
 TEST LOADS: +57.0 P.S.F. & -63.0 P.S.F.

Unless Stated Otherwise  
 TOLERANCES are  
 .0 = ±.031  
 .00 = ±.015  
 .000 = ±.005  
 .0000 = ±.001  
 Degrees = ± 1/2'

Unless Stated Otherwise  
 DIMENSIONS ARE IN INCHES.



8585 Duke Boulevard  
 Mason, OH 45040 USA  
 Tel. No. 513-770-4800  
 Fax No. 513-770-4853

DESCRIPTION: MODERN STEEL 2" INTELICORE +38/-42 PSF TO 18' W		WINDLOAD RATING W6 DP38T	
DRAWN BY: JDW	DATE: 9/17/21	SCALE: NTS	DWG. B
CHECKED BY: JDW	DATE: 9/23/21	SHEET 2 OF 5	SIZE B
DWG. NO.: 105188AB		VER: TDI	

MANUFACTURING PRODUCT CODE  
 DSIU-1F477

PART NO.: N/A

WINDLOAD RATING  
 W6 DP38T

BRAND	MODERN STEEL		COMMERCIAL DOORS	
	FLUSH	GROOVED	FLUSH	GROOVED
CLOPAY	9208, HDPCC2	9209, HDPCR2	3728	3729
HOLMES	7208	7209	--	C7R20

SEE SHEET 5 FOR "CANYON RIDGE MODERN SERIES" MODELS.

SHEET 3 OF 5

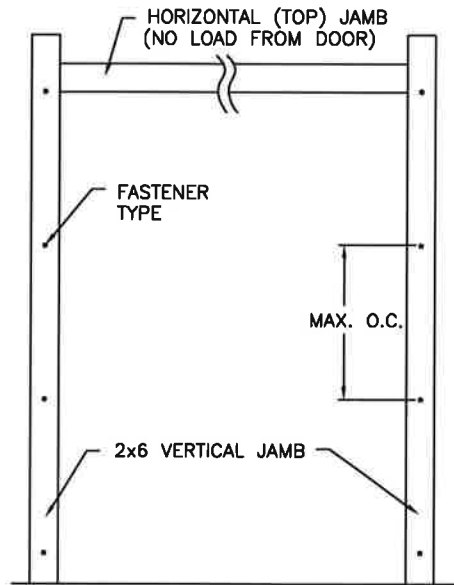
REVISIONS					DESCRIPTION
REV. NO.	ZONE	DATE	ECN NO.	APPVD.	
00	-	-	-	-	SEE REVISION HISTORY ON SHEET ONE.

### JAMB TO SUPPORTING STRUCTURE ATTACHMENT

**NOTES:**

1. ALL THE LOAD FROM THE DOOR IS TRANSFERRED TO THE TRACK AND THEN FROM THE TRACK TO THE 2x6 VERTICAL SYP (GRADE #2 OR BETTER) JAMBS. NO LOAD FROM THE DOOR IS TRANSFERRED TO THE HORIZONTAL (TOP) JAMB.
2. EACH VERTICAL JAMB SEES A MAXIMUM DESIGN LOAD OF +342 LB & -378 LB. PER LINEAR FOOT OF JAMB.
3. ALL JAMB FASTENERS MAY BE (BUT ARE NOT REQUIRED TO BE) COUNTERSUNK TO PROVIDE A FLUSH MOUNTING SURFACE.
4. A 1/3 STRESS INCREASE FOR WIND LOAD WAS NOT USED IN THE CALCULATION OF ALLOWABLE LOADS FOR ANCHORS AND FASTENERS FOR STEEL, CONCRETE AND MASONRY.

**NOTE:** 2x6 WOOD JAMBS ARE NOT REQUIRED WITH CONTINUOUS ANGLE MOUNT TRACK. HOWEVER, IF DESIRED ON STEEL JAMBS OR CONCRETE OR BLOCK WALLS, APPROVED FASTENERS AS DETAILED BELOW SHOULD BE INCREASED IN LENGTH BY 1-1/2" AND INSTALLED DIRECTLY THROUGH THE ANGLE AND 2x6 WOOD JAMBS INTO THE STEEL JAMBS OR CONCRETE OR BLOCK WALLS. ANCHORS CAN BE (BUT ARE NOT REQUIRED TO BE) COUNTERSUNK TO PROVIDE A FLUSH MOUNTING SURFACE. CONTINUOUS ANGLE TRACK CAN BE ANCHORED DIRECTLY TO GROUT REINFORCED BLOCK WALL OR 3,000 PSI MIN. CONCRETE COLUMN OR STEEL JAMBS.

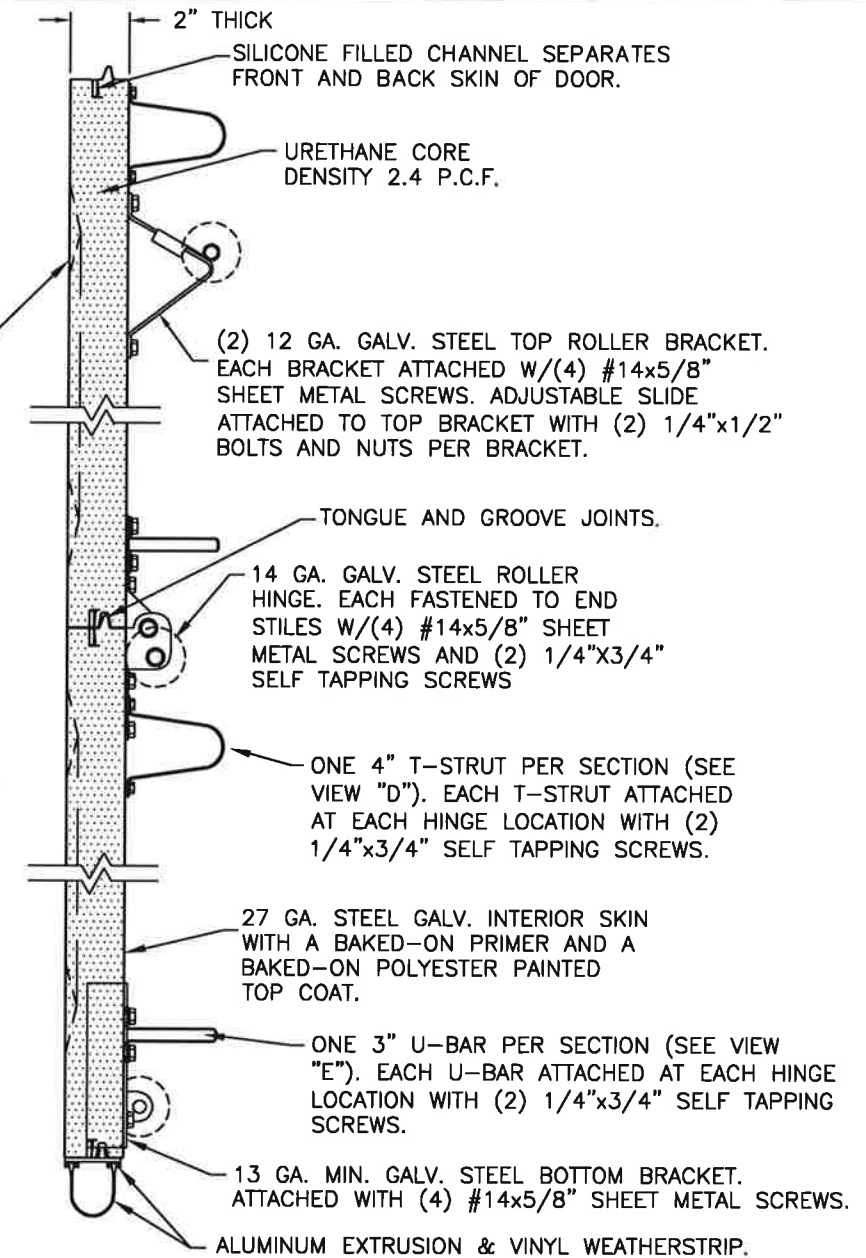
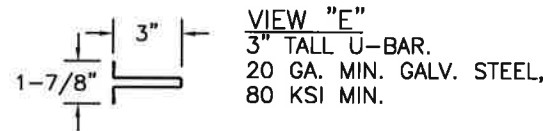
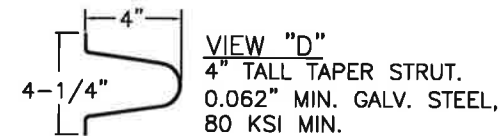


### 2x6 JAMB TO SUPPORTING STRUCTURE ATTACHMENT (NOT TO BE USED FOR ATTACHMENT OF TRACK ANGLE TO 2x6 VERTICAL JAMBS)

BUILDING TYPE	FASTENER TYPE	MAXIMUM ON-CENTER DISTANCE BETWEEN FASTENERS*	STEEL WASHERS REQUIRED
HOLLOW CMU BLOCK WALL	1/4" x 1-1/4" MIN. EMBED ULTRACON CONCRETE ANCHOR	4 3/4"	1" O.D.
GROUT-FILLED CMU BLOCK	1/4" x 1-1/4" MIN. EMBED ULTRACON CONCRETE ANCHOR	8"	1" O.D.
2000 PSI MIN. CONCRETE	1/4" x 1-3/4" MIN. EMBED ULTRACON CONCRETE ANCHOR	6 3/4"	1" O.D.
2000 PSI MIN. CONCRETE	1/4" x 1-3/4" MIN. EMBED TAPCON CONCRETE ANCHOR	6 1/2"	1" O.D.
2000 PSI MIN. CONCRETE	3/8" X 1-3/4" MIN. EMBED WEJ-IT ANKR TITE SLEEVE ANCHOR	14 3/4"	INCLUDED
4000 PSI MIN. CONCRETE	3/8" X 1-3/4" MIN. EMBED WEJ-IT ANKR TITE SLEEVE ANCHOR	24"	INCLUDED
WOOD FRAME (SYP 0.55 SG)	1/2" x 3" LAG SCREW (ASTM A307, GRADE A) 1-5/8" EMBED INTO STRUCTURE	15 3/4"	1" O.D.
14GA STEEL (0.060" MIN.)	1/4"-14 x 1" ITW BUILDEX TEKS SELF-DRILLING FASTENER	6 1/2"	1" O.D.
12GA STEEL (0.105" MIN.)	1/4"-14 x 1" ITW BUILDEX TEKS SELF-DRILLING FASTENER	11 3/4"	1" O.D.
1/8" STEEL	1/4"-14 x 1" ITW BUILDEX TEKS SELF-DRILLING FASTENER	13 3/4"	1" O.D.

\* FIRST (BOTTOM) ANCHOR STARTING AT NO MORE THAN HALF OF THE MAXIMUM ON-CENTER DISTANCE. HIGHEST ANCHOR INSTALLED AT LEAST AS HIGH AS THE DOOR OPENING.  
CLOPAY DOES NOT SUPPLY JAMB ATTACHMENT FASTENERS.  
MINIMUM DISTANCE BETWEEN CENTER OF ANCHOR AND EDGE OF CONCRETE: 2-1/2", EXCLUDING STUCCO THICKNESS. EXCEPTION FOR TAPCON -- MINIMUM EDGE DISTANCE FOR TAPCON FASTENER IS 1-1/4", EXCLUDING STUCCO THICKNESS.

27 GA. MIN. STEEL GALV. EXTERIOR SKIN WITH BAKED-ON PRIMER AND A BAKED-ON POLYESTER PAINTED TOP COAT.



SECTION A-A (SIDE VIEW)

DESIGN LOADS: +38.0 P.S.F. & -42.0 P.S.F.  
TEST LOADS: +57.0 P.S.F. & -63.0 P.S.F.

Unless Stated Otherwise TOLERANCES are:  
.0 = ±.031  
.00 = ±.015  
.000 = ±.005  
.0000 = ±.001  
Degrees = ±1/2'  
Unless Stated Otherwise DIMENSIONS ARE IN INCHES.

**Glopay** CORPORATION  
8585 Duke Boulevard  
Mason, OH 45040 USA  
Tel. No. 513-770-4800  
Fax No. 513-770-4853

MANUFACTURING PRODUCT CODE  
DSIU-1F477

PART NO.: N/A

WINDLOAD RATING  
W6 DP38T

DESCRIPTION: MODERN STEEL 2" INTELICORE +38/-42 PSF TO 18' W

DRAWN BY: JDW	DATE: 9/17/21	SCALE: NTS	DWG. B
CHECKED BY: JDW	DATE: 9/23/21	SHEET 3 OF 5	SIZE B

DWG. NO.: 105188AB  
VER: TDI

DESIGN ENGINEER:  
MARK WESTERFIELD, P.E.  
FLORIDA P.E. #48495, NC P.E. #23832, TEXAS P.E. #91513

BRAND	MODERN STEEL		COMMERCIAL DOORS	
	FLUSH	GROOVED	FLUSH	GROOVED
CLOPAY	9208, HDPCC2	9209, HDPGR2	3728	3729
HOLMES	7208	7209	--	C7R20

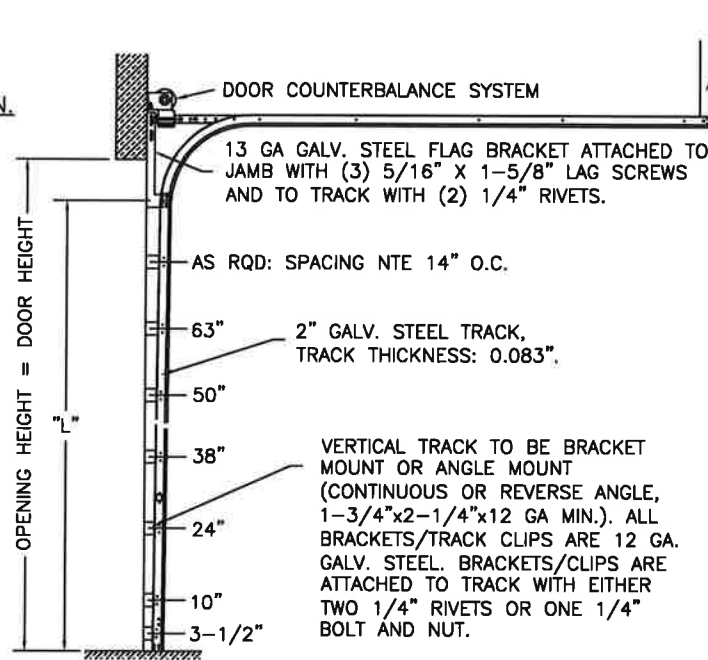
SEE SHEET 5 FOR "CANYON RIDGE MODERN SERIES" MODELS.

SHEET 4 OF 5

REVISIONS					DESCRIPTION
REV. NO.	ZONE	DATE	ECN NO.	APPVD	
00	-	-	-	-	SEE REVISION HISTORY ON SHEET ONE.

**2" TRACK CONFIGURATION.**

NOTE DOUBLE TRACK HEADROOM, HI-LIFT TRACK, FOLLOW-THE-ROOF TRACK, AND VERTICAL LIFT TRACK ARE AVAILABLE OPTIONS. TRACK CONFIGURATION ABOVE THE DOOR OPENING DOES NOT AFFECT THE WIND LOAD RATING.



HORIZONTAL TRACK SUPPORT BY DOOR INSTALLER (TO SUIT).

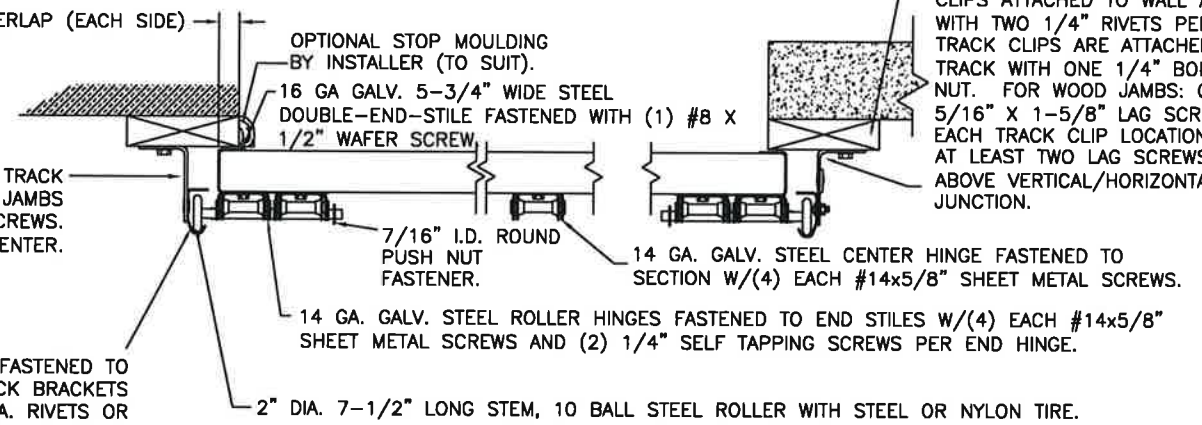
13 GA GALV. STEEL FLAG BRACKET ATTACHED TO JAMB WITH (3) 5/16" X 1-5/8" LAG SCREWS AND TO TRACK WITH (2) 1/4" RIVETS.

DOOR HEIGHT	"L"
6'-6"	70"
7'-0"	76"
7'-6"	82"
8'-0"	88"
8'-6"	94"
9'-0"	100"
9'-6"	106"
10'-0"	112"
10'-6"	118"
11'-0"	124"
11'-6"	130"
12'-0"	136"
12'-6"	142"
13'-0"	148"
13'-6"	154"
14'-0"	160"
14'-6"	166"
15'-0"	172"
15'-6"	178"
16'-0"	184"

**JAMB CONFIGURATION FOR 2" TRACK.**

**BRACKET MOUNT JAMB CONFIGURATION**

1" DOOR OVERLAP (EACH SIDE)  
2-1/2" x 12 GA. GALV. STEEL TRACK BRACKETS FASTENED TO WOOD JAMBS WITH 5/16" x 1-5/8" LAG SCREWS. NOT TO EXCEED 14" ON-CENTER.



2" GALV. STEEL TRACK FASTENED TO 12 GA. GALV. STEEL TRACK BRACKETS WITH EITHER (2) 1/4" DIA. RIVETS OR (1) 1/4" x 5/8" BOLT & NUT PER TRACK BRACKET.

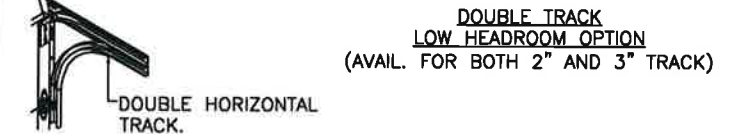
**SECTION C-C**

**PREPARATION OF JAMBS BY OTHERS.**

**ANGLE MOUNT JAMB CONFIGURATION**

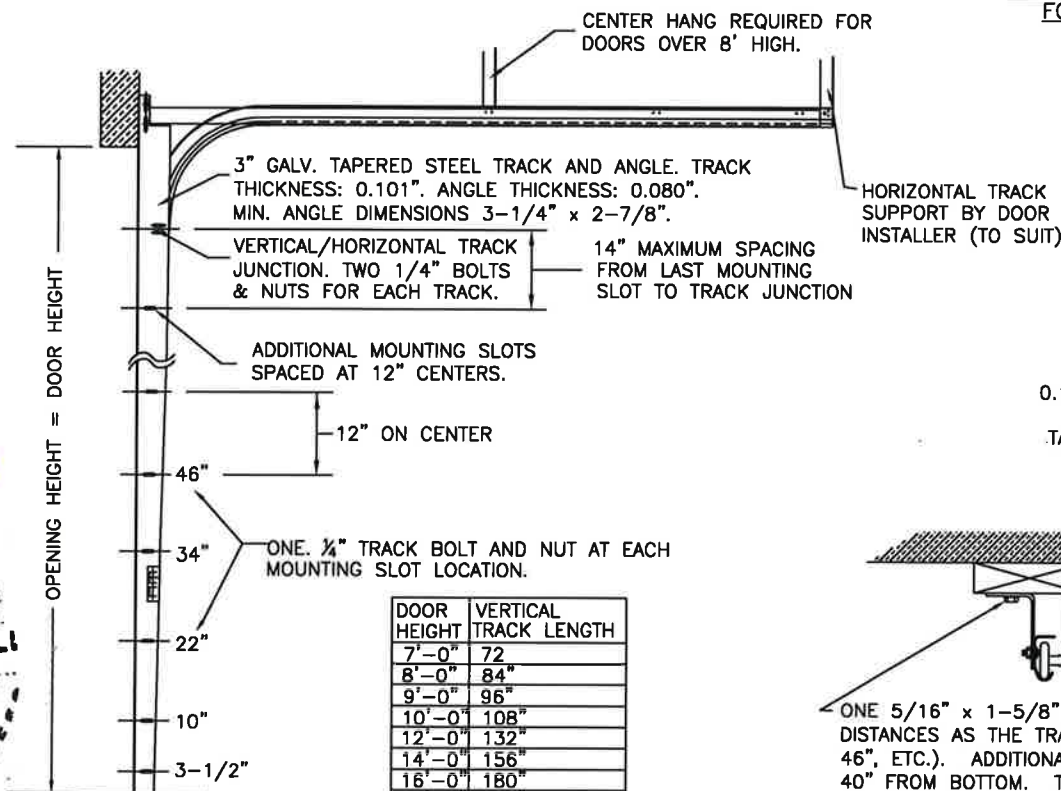
2x6 SYP JAMB (IF PRESENT; SEE JAMB NOTES ON SHEET 3).  
VERTICAL TRACK TO BE CONTINUOUS OR REVERSE ANGLE. 12 GA. TRACK CLIPS ATTACHED TO WALL ANGLE WITH TWO 1/4" RIVETS PER CLIP. TRACK CLIPS ARE ATTACHED TO TRACK WITH ONE 1/4" BOLT AND NUT. FOR WOOD JAMBS: ONE 5/16" X 1-5/8" LAG SCREW AT EACH TRACK CLIP LOCATION. ALSO AT LEAST TWO LAG SCREWS LOCATED ABOVE VERTICAL/HORIZONTAL TRACK JUNCTION.

LHR BRACKET (2-1/2" x 5-3/4" x 12GA) ATTACHED WITH (2) 1/4" x 3/4" SELF TAPPING SCREWS. NOTE THAT LHR BRACKETS ARE ALSO USED WITH "DOUBLE END STILE" AS SHOWN IN ZONE B-3 SHEET 1.



**3" TRACK CONFIGURATION.**

NOTE DOUBLE TRACK HEADROOM, HI-LIFT TRACK, FOLLOW-THE-ROOF TRACK, AND VERTICAL LIFT TRACK ARE AVAILABLE OPTIONS. TRACK CONFIGURATION ABOVE THE DOOR OPENING DOES NOT AFFECT THE WIND LOAD RATING.



CENTER HANG REQUIRED FOR DOORS OVER 8' HIGH.

3" GALV. TAPERED STEEL TRACK AND ANGLE. TRACK THICKNESS: 0.101". ANGLE THICKNESS: 0.080". MIN. ANGLE DIMENSIONS 3-1/4" x 2-7/8".

HORIZONTAL TRACK SUPPORT BY DOOR INSTALLER (TO SUIT).

14" MAXIMUM SPACING FROM LAST MOUNTING SLOT TO TRACK JUNCTION

ADDITIONAL MOUNTING SLOTS SPACED AT 12" CENTERS.

12" ON CENTER

ONE 1/4" TRACK BOLT AND NUT AT EACH MOUNTING SLOT LOCATION.

DOOR HEIGHT	VERTICAL TRACK LENGTH
7'-0"	72"
8'-0"	84"
9'-0"	96"
10'-0"	108"
12'-0"	132"
14'-0"	156"
16'-0"	180"
17'-0"	204"
18'-0"	228"

ONE 5/16" x 1-5/8" LAG SCREW SPACED AT THE SAME DISTANCES AS THE TRACK BOLTS (I.E. 3-1/2", 10", 22", 34", 46", ETC.). ADDITIONAL LAG SCREWS LOCATED AT 16", 28", & 40" FROM BOTTOM. TWO LAG SCREWS ALSO LOCATED ABOVE VERTICAL/HORIZONTAL TRACK JUNCTION.

**JAMB CONFIGURATION FOR 3" TRACK.**

1" DOOR OVERLAP (EACH SIDE)  
2x6 SYP JAMB (IF PRESENT; SEE JAMB NOTES ON SHEET 3).  
3-1/4" x 2-7/8" MIN. x 0.080" TAPERED ANGLE. SEE LAG BOLT MOUNTING AT TRACK CONFIGURATION BELOW.  
0.101" THICK 3" GALV. STEEL TRACK FASTENED TO TAPERED ANGLE. TRACK ATTACHED TO TAPERED ANGLE WITH ONE 1/4" x 5/8" BOLT & NUT AT EACH MOUNTING SLOT.

OPTIONAL STOP MOULDING BY DOOR INSTALLER (TO SUIT).  
16 GA GALV. 5-3/4" WIDE STEEL DOUBLE-END-STILE FASTENED WITH (1) #8 X 1/2" WAFER SCREW.

7/16" I.D. ROUND PUSH NUT FASTENER.

14 GA. GALV. STEEL CENTER HINGE FASTENED TO SECTION W/(4) EACH #14x5/8" SHEET METAL SCREWS.

14 GA. GALV. STEEL ROLLER HINGES FASTENED TO END STILES W/(4) EACH #14x5/8" SHEET METAL SCREWS AND (2) 1/4" SELF TAPPING SCREWS PER END HINGE.

**SECTION C-C**

**PREPARATION OF JAMBS BY OTHERS.**

DESIGN LOADS: +38.0 P.S.F. & -42.0 P.S.F.  
TEST LOADS: +57.0 P.S.F. & -63.0 P.S.F.

Unless Stated Otherwise TOLERANCES are  
.0 = ±.031  
.00 = ±.015  
.000 = ±.005  
.0000 = ±.001  
Degrees = ±1/2"

Unless Stated Otherwise DIMENSIONS ARE IN INCHES.

**Clopay** CORPORATION  
8585 Duke Boulevard  
Mason, OH 45040 USA  
Tel. No. 513-770-4800  
Fax No. 513-770-4853

DESCRIPTION: MODERN STEEL 2" INTELICORE +38/-42 PSF TO 18' W

DRAWN BY: JDW DATE: 9/17/21 SCALE: NTS DWG. B  
CHECKED BY: JDW DATE: 9/23/21 SHEET 4 OF 5 SIZE B

DWG. NO.: 105188AB VER: TDI

MARK W. WESTERFIELD  
DESIGN ENGINEER  
FLORIDA P.E. #48495, NC P.E. #23832, TEXAS P.E. #91513

CLOPAY 'CANYON RIDGE MODERN SERIES': CRM2nnn

HOLMES 'GLENMOOR MODERN SERIES': GLM2nnn

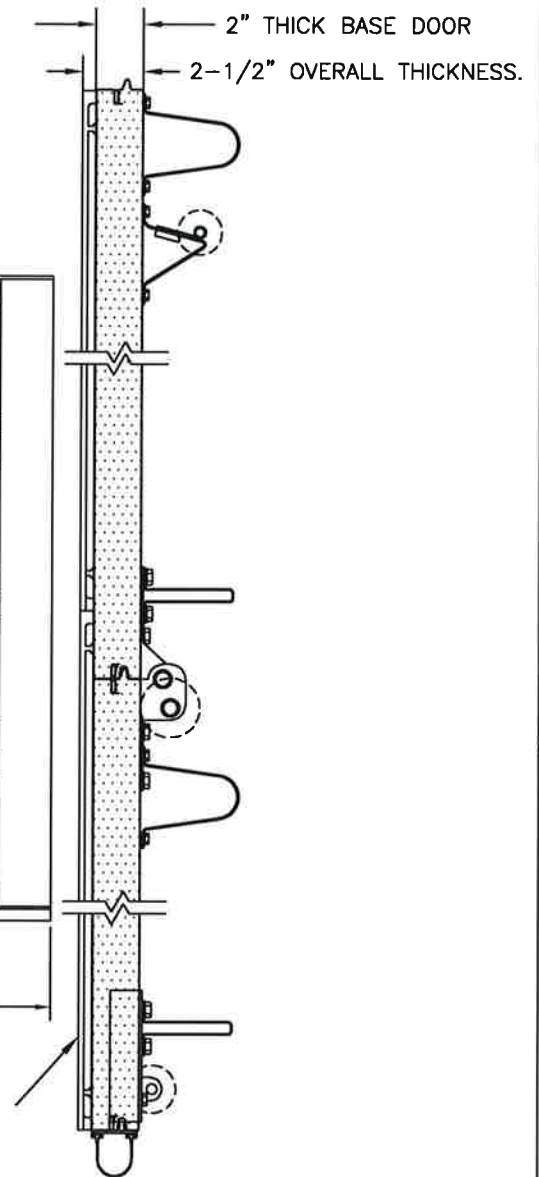
IDEAL 'CUSTOM CRAFTED MODERN WOOD-LOOK' SERIES: WLM2nnn

NOTE: "nnn" REPRESENTS THE ARRANGEMENT OF THE DECORATIVE OVERLAYS. DOORS MAY HAVE 'PLANK' APPEARANCE, ALUMINUM INLAYS, OR "FULL VISION".

SHEET: 5 OF 5		REVISIONS			
REV. NO.	ZONE	DATE	ECN NO.	APPVD:	DESCRIPTION
00	-	-	-	-	SEE REVISION HISTORY ON SHEET ONE.

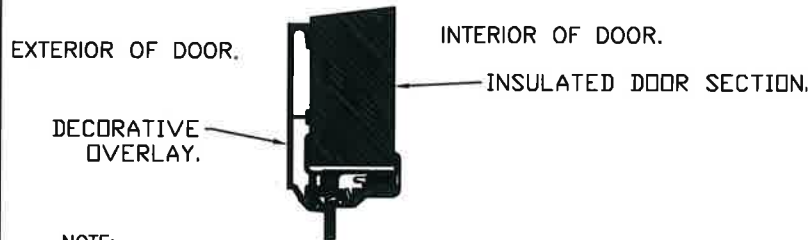
FULL VISION GLAZING SHOWN.

OPTIONAL GLAZING MAY BE IMPACT RESISTANT (SEE DETAIL A ON SHEET 2) OR STANDARD (SEE DETAIL B ON SHEET 2). MAXIMUM GLAZING SIZE (DLO) IS 39-1/4"x13-1/4". GLAZING MAY BE SHORT-PANEL OR LONG-PANEL. GLAZING MAY BE INSTALLED IN ANY LOCATION IN ANY OR ALL SECTIONS.

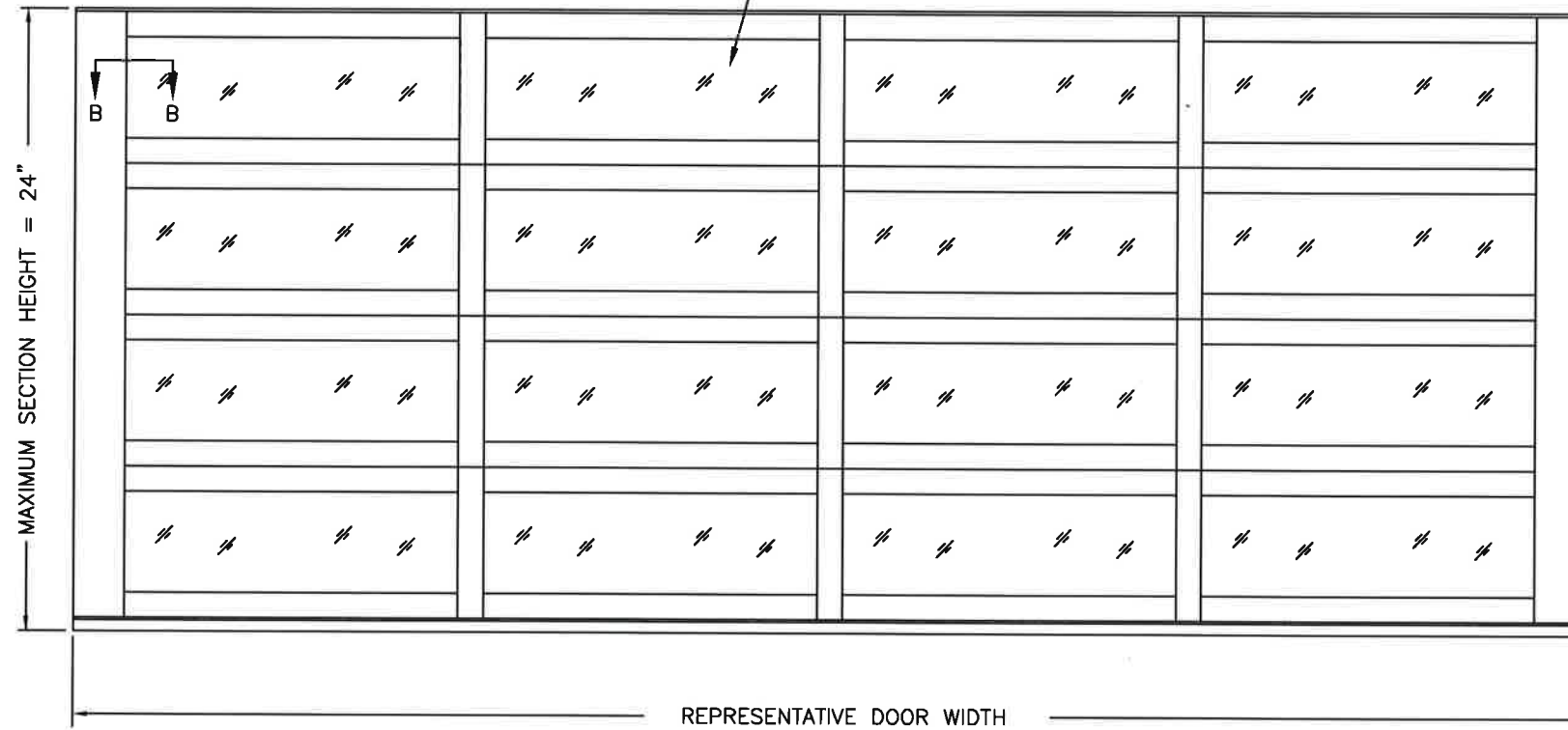


SECTION A-A (SIDE VIEW)

SECTION B-B



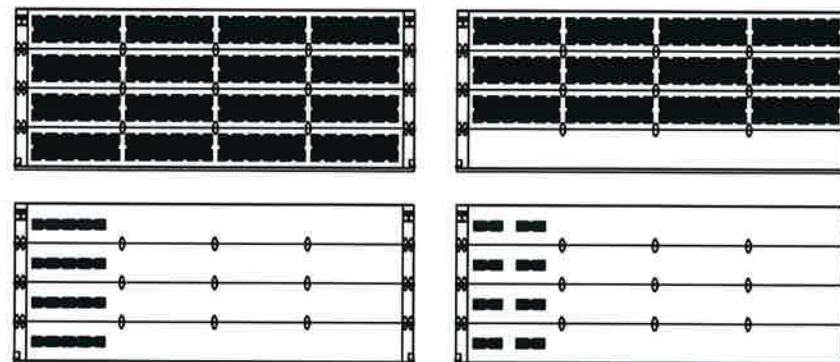
NOTE: "CANYON RIDGE" TYPE IMPACT RESISTANT GLAZING SHOWN WITH DECORATIVE OVERLAY. STANDARD GLAZING ALSO AVAILABLE. DETAILS ARE OTHERWISE STRUCTURALLY EQUIVALENT TO DETAIL A OR DETAIL B ON SHEET 2 OF THIS DRAWING.



"CANYON RIDGE" TYPE OVERLAY DOORS

- NOTES:
- "CANYON RIDGE" TYPE DOORS USE THE SAME REINFORCEMENTS AND BASE SECTION CONSTRUCTION AND TRACK CONFIGURATION DESCRIBED ON SHEETS 1-4 OF THIS DRAWING.
  - "CANYON RIDGE" TYPE DOORS ARE IMPACT RESISTANT AS SOLID OR WITH IMPACT RESISTANT GLAZING AND FRAME AS SHOWN IN DETAIL B-B ABOVE.

REPRESENTATIVE GLAZING PATTERNS.



GLAZING MAY BE IN ANY LOCATION IN ANY OR ALL SECTIONS. THESE PATTERNS ARE REPRESENTATIVE OF THE APPROVED CONFIGURATIONS. NOT ALL CONFIGURATIONS ARE AVAILABLE AS STANDARD PRODUCT. CONSULT FACTORY FOR DETAILS.

CANYON-RIDGE TYPE MODERN SERIES: HIGH DENSITY MOLDED COMPOSITE CLADDING OR OVERLAYS ADHERED TO OUTSIDE SKIN WITH PERMANENT ADHESIVE.

DESIGN LOADS: +38.0 P.S.F. & -42.0 P.S.F.  
TEST LOADS: +57.0 P.S.F. & -63.0 P.S.F.

Unless Stated Otherwise  
TOLERANCES are

.0 = ±.031  
.00 = ±.015  
.000 = ±.005  
.0000 = ±.001  
Degrees = ±1/2'

Unless Stated Otherwise  
DIMENSIONS ARE IN INCHES.

**Clopay** CORPORATION  
8585 Duke Boulevard  
Mason, OH 45040 USA  
Tel. No. 513-770-4800  
Fax No. 513-770-4853

DESCRIPTION: MODERN STEEL 2" INTELICORE +38/-42 PSF TO 18' W		WINDLOAD RATING <b>W6 DP38T</b>	
DRAWN BY: JDW	DATE: 9/17/21	SCALE: NTS	DWG. B
CHECKED BY: JDW	DATE: 9/23/21	SHEET 5 OF 5	SIZE B
DWG. NO.: 105188AB	VER: TDI		

*Mark Westerfield*  
  
 DESIGN ENGINEER  
 MARK WESTERFIELD, P.E.  
 FLORIDA P.E. #48495, NC P.E. #23832, TEXAS P.E. #91513