

DOORKRAFT,LLC  
 1625 Crescent Circle  
 Suite 225  
 Carrollton, TX 75006

# RESIDENTIAL CEDAR WOOD DOOR WINDLOAD

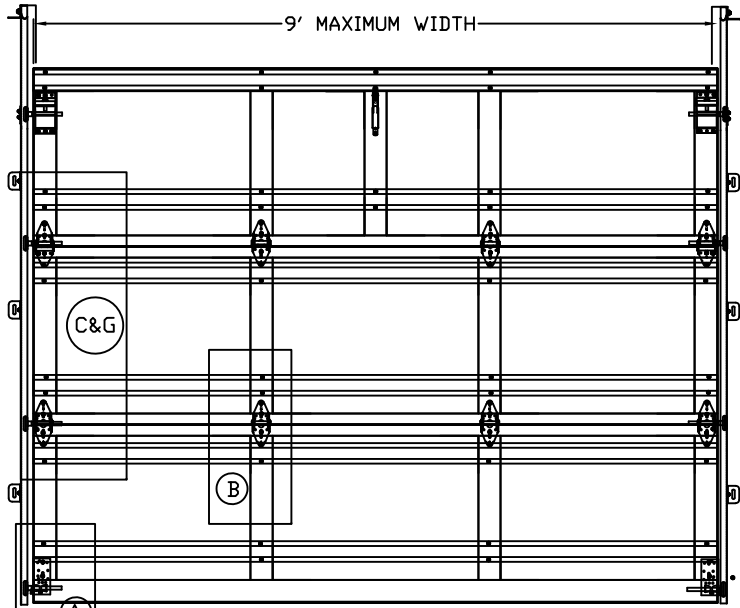
DRAWING No. 9' x 7' WL	
SHEET No. 1 OF 2	
DRAWN BY: JKL	DATE: 05-18-2020
REVISION HISTORY: REVISED TO NEW STANDARDS	REV. 5.18.2020
ORIGINAL DRAWING	ORG. DATE 10.2.2019

SCALE: NONE	DESIGN PRESSURES	9'	+22.8	-25.8
		8'	+25.7	-29.0

TESTING STANDARDS: DASHA 108-05/12/17

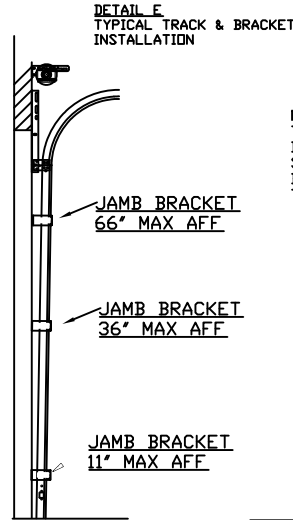
DOOR DISTRIBUTOR: DOORKRAFT LLC

## DETAIL D TRACK & BRACKET DETAIL



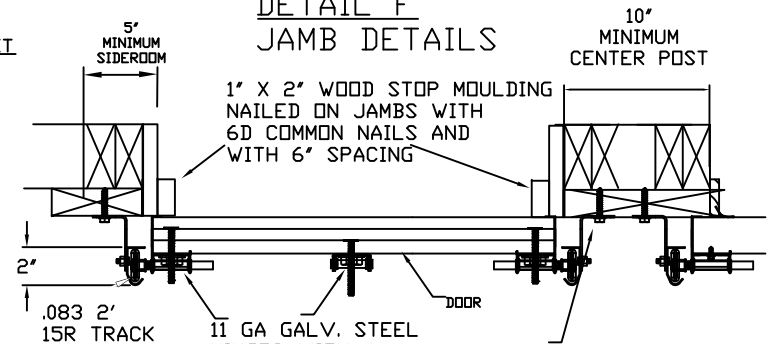
INTERIOR ELEVATION

7' TALL DOOR  
3 QTY 28" SECTIONS  
8' TALL DOOR  
4 QTY 24" SECTIONS

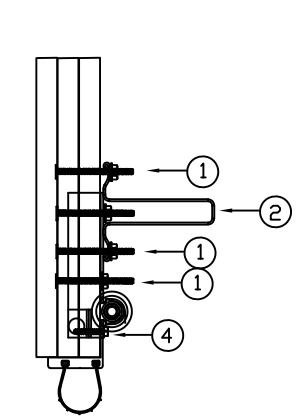


NOTE: SPACING SHOWN FOR SINGLE DOOR 7' TALL TRACK SPACING MAY BE ADJUSTED DOWNWARD FOR TALLER DOORS OR SHORTER SECTION HEIGHTS. ADDITIONAL BRACKETS MAY BE NEEDED FOR TALLER DOORS. SPACING NOT TO EXCEED 30".

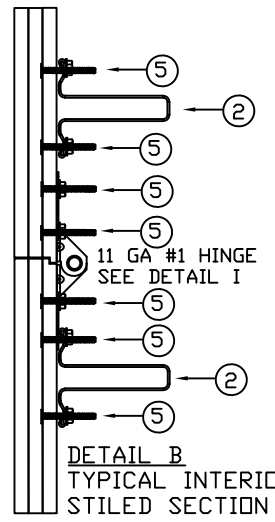
## DETAIL F JAMB DETAILS



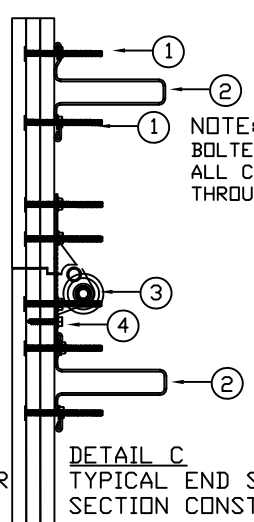
NOTE: BOTTOM & TOP ROLLERS DETAIL P  
INTERMEDIATE ROLLERS DETAIL Q



DETAIL A  
TYPICAL BOTTOM SECTION CONSTRUCTION



DETAIL B  
TYPICAL INTERIOR STILED SECTION CONSTRUCTION



DETAIL C  
TYPICAL END STILES SECTION CONSTRUCTION

NOTE: ALL HARDWARE ON END STILES THROUGH BOLTED THROUGH FRAME AND TONGUE & GROOVE BOARD. ALL CENTER STILE HARDWARE THROUGH BOLTED ONLY THROUGH FRAME

- ⑤ 1/4-20 X 1-7/8" FLAT HEAD CARRIAGE BOLT WITH 1/4-20 SERRATED FLANGE NUT
- ④ 5/16" X 1-5/8" HH LAG SCREW WITH WASHER HEAD
- ③ 11 GAUGE HINGE #1,#2,#3 (DETAIL I,J,K)
- ② 2-1/4" X 8'-11" STRUT HD 20GA (DETAIL T)
- ① 1/4-20 X 2-1/4" FLAT HEAD CARRIAGE BOLT WITH 1/4-20 SERRATED FLANGE NUT

10g HD JAMB BRACKET FASTENED TO WOOD JAMBS WITH 5/16" X 1-3/4" LAG SCREW WITH WASHER HEAD. FASTEN TO TRACK WITH 1/4" TRACK BOLTS AND NUTS. PREPARATION OF JAMBS BY OTHERS SEE DETAIL E FOR SPACING

John E. Scates, P.E.  
 2560 King Arthur #124-54  
 Lewisville, TX 75056

DOORKRAFT,LLC  
 1625 Crescent Circle  
 Suite 225  
 Carrollton, TX 75006

# RESIDENTIAL CEDAR WOOD DOOR WINDLOAD

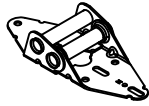
DRAWING No.: 9' x 7' WL  
 SHEET No.: 2 OF 2  
 DRAWN BY: JKL DATE: 05-18-2020

SCALE: NONE	DESIGN PRESSURES	9'	+22.8	-25.8	TESTING STANDARDS: DASMA 108-05/12/17	DOOR DISTRIBUTOR: DOORKRAFT LLC
		8'	+25.7	-29.0		

DETAIL I  
11 GA #1 HINGE



DETAIL J  
11 GA #2 HINGE



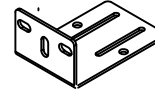
DETAIL K  
11 GA #3 HINGE



DETAIL L  
10 GA HDJAMB  
BRACKET 4-1/4"



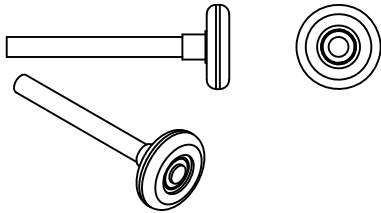
DETAIL M  
10 GA HDJAMB  
BRACKET 5-1/2"



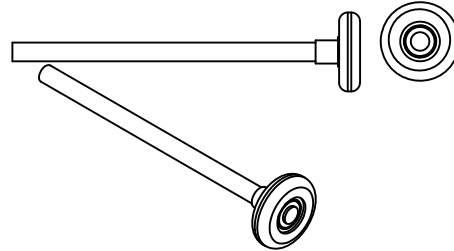
DETAIL N  
COMMERCIAL TOP BRACKET  
ARROW TRU-LINE PART:853ADJTFC0



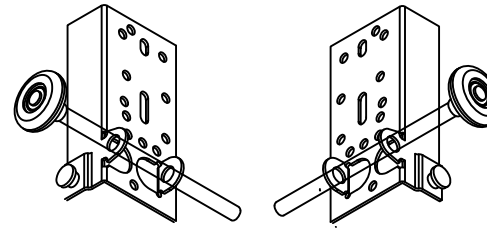
DETAIL O  
2" NYLON PRECISION BEARING  
SHIELDED 4" ROLLER 100LB LOAD



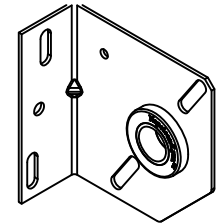
DETAIL P  
2" NYLON PRECISION BEARING  
SHIELDED 7" ROLLER 100LB LOAD



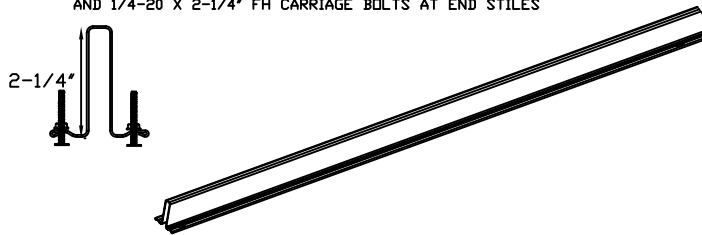
DETAIL R  
BB-100 BOTTOM BRACKET  
NAPOLEAN LYNX PART: 3-37-1



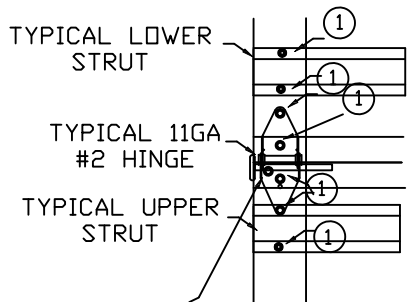
DETAIL U  
3-3/8" CENTER SUPPORT  
11GA W/BRG



DETAIL T  
2-1/4" 8'-11" STRUT HD 20GA  
STRUTS TO BE TROUGH-BOLTED  
TO EACH STYLE WITH 1/4-20X 1-7/8" FH CARRIAGE BOLTS TO CENTER STILES  
AND 1/4-20 X 2-1/4" FH CARRIAGE BOLTS AT END STILES



DETAIL G  
TYPICAL END STILE  
ATTACHMENT



- ③ 11 GAUGE HINGE #1,#2,#3
- ② 2-1/4" X 8'-11" STRUT HD 20GA
- ① 1/4-20 X 2-1/4" FLAT HEAD CARRIAGE BOLT WITH 1/4-20 SERRATED FLANGE NUT

5/8-16 X 1-5/8" HH LAG SCREW  
 (through bolted through frame and t&g)

John E. Scates, P.E.  
 2560 King Arthur #124-54  
 Lewisville, TX 75056