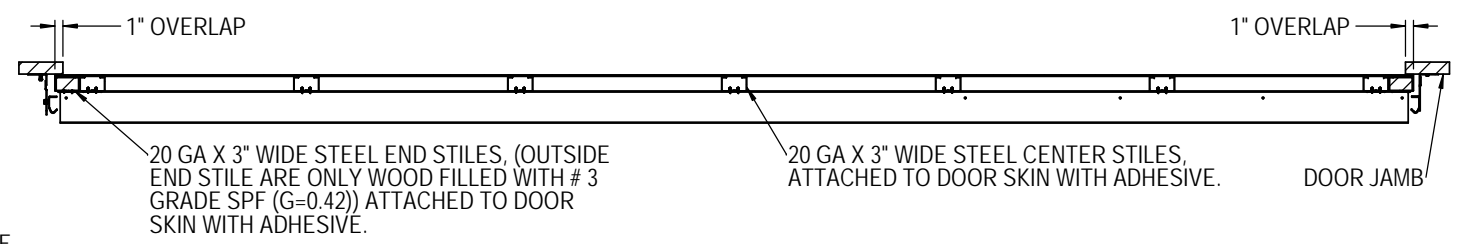


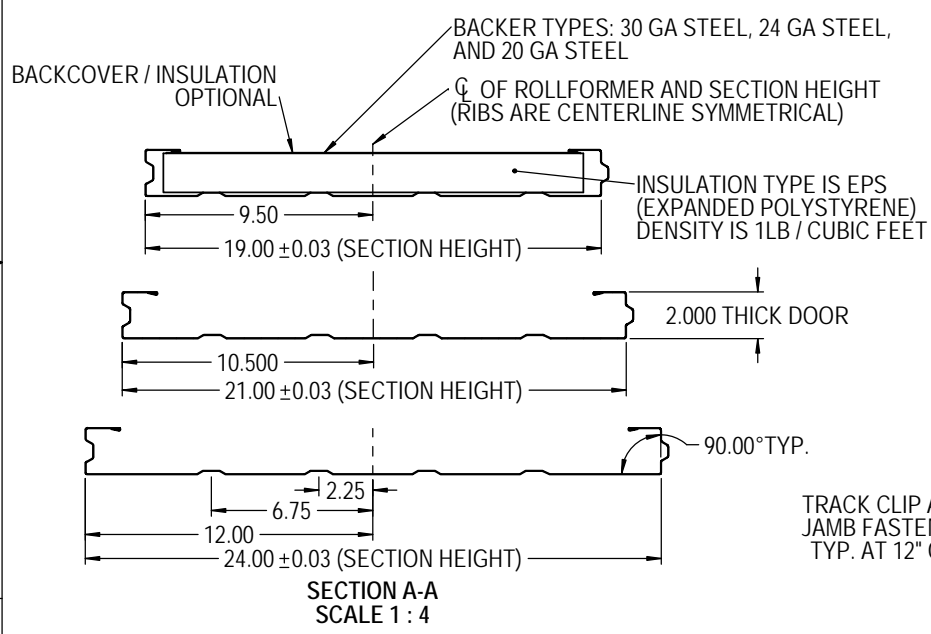
NOTES: (UNLESS OTHERWISE SPECIFIED)

1. RATED DESIGN LOAD +50/-56 PSF.
2. SECTION HEIGHTS MAY VARY TO CREATE VARIOUS DOOR HEIGHTS, 24" MAXIMUM SECTION HEIGHT.
3. MINIMUM 1" OVERLAP ON BOTH JAMBS REQUIRED TO MEET NEGATIVE DESIGN PRESSURES.
4. TESTED IN ACCORDANCE WITH DADE COUNTY PROTOCOLS TAS 201-94, TAS 202-94, & TAS 203-94.
5. DOOR SKIN MUST BE 50,000 PSI MIN. YIELD STRENGTH.
6. JAMB LOAD CALCULATIONS:  
 $(1/2 \text{ DOOR WIDTH})(1 \text{ FT OF HEIGHT})(\text{DESIGN PRESSURE})$   
 $(7.067)(1 \text{ FOOT})(50.00 \text{ AND } -56.00)(353.4/-395.8) \text{ LB.}$
7. JAMB FASTENER REQUIREMENTS:  
 $F_x = (1/2 \text{ DOOR WIDTH})(1 \text{ FT OF HEIGHT})(\text{DESIGN PRESSURE})$   
 $F_x = 354 \text{ LBS.}$
8. DOOR SKIN MATERIAL SHALL BE GALVANIZED ACCORDING TO ASTM A-525 TO G40 MIN, WITH BAKED-ON PRIMER, AND BAKED-ON POLYESTER PAINT TOP COAT.
9. FOR ANCHORING INTO WOOD, USE ONE 5/16" LAG SCREW PER TRACK CLIP WITH 1-1/2" EMBEDMENT INTO SOUTHERN PINE (G=0.55) OR BETTER.
10. APPROVED NON-INSULATED: 427 (24 GA), 421 (20 GA). APPROVED INSULATED: 429 (24 GA), 423 (20 GA).
11. WELD SLOT ON ANGLE AND 3/32" X 1" LONG ON 12" CENTERS. "IF WELDING MOUNTING OPTION IS CHOSEN."
12. LIFT UP MECHANISM-MANUAL, CHAIN LIFT, OR OPERATOR IS NOT PART OF THIS APPROVAL.
13. STANDARD LIFT, HIGH LIFT, VERTICAL LIFT, AND LOW HEADROOM TRACK IS AVAILABLE. FOR LOW HEADROOM LIFT CONDITIONS TOP BRACKET SHALL BE 13 GA LHR 7/4 TOP BRACKET WITH A MIN OF (3) 1/4 - 14 X 7/8" SELF DRILLING CRIMPTITE SCREWS IN LIEU OF THE BRACKET SHOWN ON DRAWING. U-BAR ON TOP SECTION SHALL BE INSTALLED ON TOP OF LHR TOP BRACKETS.
14. ATTACH STRUTS WITH (4) 1/4-14x7/8" SELF DRILLING CRIMPTITE SCREWS AT ALL STILE LOCATIONS, TYP. LOCATED WITHIN 6", +/- 3" FROM TOP OF SECTION.
15. KEY LOCK, SIDE LOCK, OR OPERATOR REQUIRED.
16. EXHAUST PORTS- OPTIONAL UP TO 6 PER BOTTOM SECTION.
17. IMPACT RESISTANT GLAZING OPTION- IMPACT RESISTANT GLAZING SYSTEM MAY BE INSTALLED INTERMEDIATE SECTION ONLY. GLAZING SHALL BE 1/4" POLYCARBONATE. 13-3/4" X 20-1/8" MAXIMUM SIZE, FASTENED WITH # 8 X 1" SMS: 3X MAX ALONG THE HORIZONTAL AND 2X MAX ALONG THE VERTICAL. SEE DETAIL F-F ON SHEET 2 FOR ASSEMBLY DETAILS.
18. THE DESIGN OF THE SUPPORTING STRUCTURAL ELEMENTS SHALL BE THE RESPONSIBILITY OF THE PROFESSIONAL OF RECORD FOR THE BUILDING OR STRUCTURE AND IN ACCORDANCE WITH CURRENT BUILDING CODES FOR THE LOADS LISTED ON THIS DRAWING.

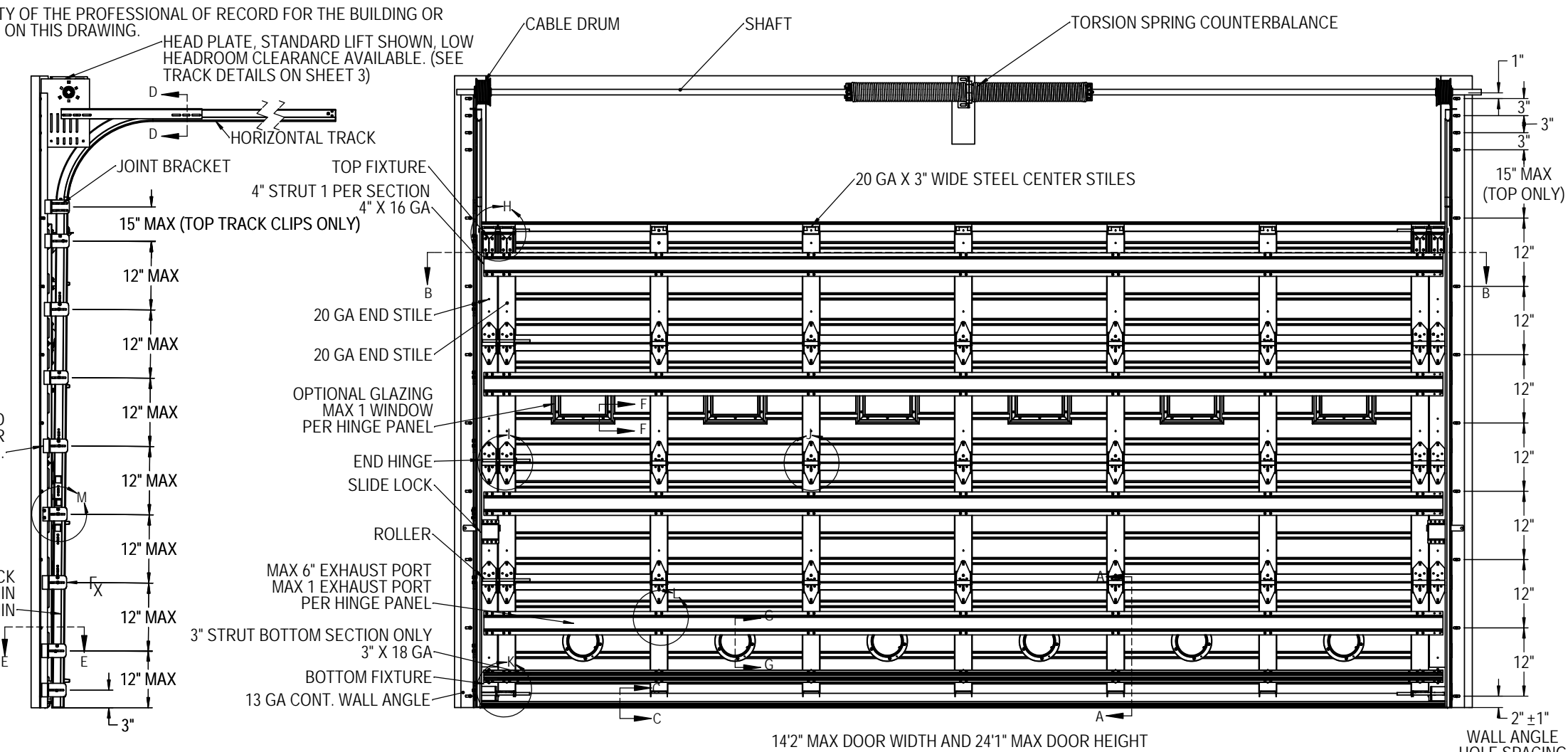
REVISIONS				
ER	REV	DESCRIPTION	DATE	APVL
ER 31715	P00	NEW DRAWING	7/16/18	ESC
-	P01	MODIFY NOTES ON SHEET 2	11/25/2019	RCJ



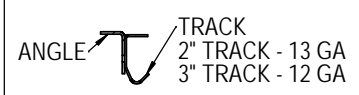
SECTION B-B  
SCALE 1 : 12



SECTION A-A  
SCALE 1 : 4



SECTION C-C  
SCALE 1 : 4



SECTION D-D  
SCALE 1 : 4

DOOR WIDTH	NUMBER OF CENTER STILES
10'-3" - 12'-2"	4
12'-3" - 14'-2"	5

THIRD ANGLE PROJECTION

OVERHEAD DOOR CORP  
2501 S. STATE HWY 121  
SUITE 200  
LEWISVILLE, TEXAS 75067  
469-549-7100

UNLESS OTHERWISE SPECIFIED

INTERPRET DIMS & TOLS PER ASME Y14.5M

ALL DIMS ARE IN INCHES

DO NOT SCALE

DIMS CIRCLED WITH SYMBOL 'O' ARE CRITICAL TO QUALITY DESIGN FEATURES & MUST MEET APPLICABLE IN-PROCESS INSPECTION STANDARDS.

TOLERANCES:  
 X = ± .1  
 XX = ± .03  
 XXX = ± .010  
 ANGULAR = ± .5°

HOLES:  
 <math>\varnothing .251 = +.004 / -.003</math>  
 <math>\varnothing .251 - \varnothing .500 = +.006 / -.003</math>  
 <math>> \varnothing .500 = +.008 / -.003</math>

ALL GEOMETRY GOVERNED BY 3D CAD DATABASE: 411500

APPROVALS	DATE
DRAWN E. CONRAD	4/4/18
CHECKED D. KORNISH	-
APPROVED	-
MATERIAL	-
FINISH	-

The Genuine. The Original.

LEWISVILLE, TEXAS

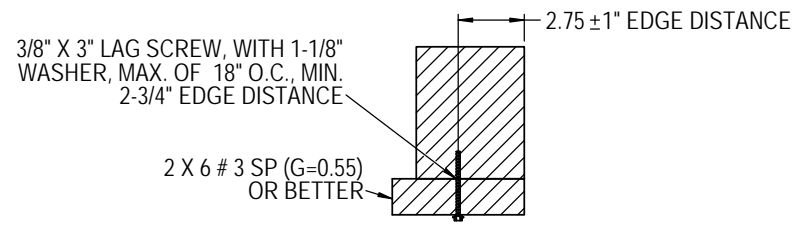
DESCRIPTION  
WINDLOAD COMMERCIAL SECTIONAL STEEL DOOR, 421/423/427/429, +50/-56PSF DADE COUNTY, 142" MAX WIDTH

SIZE DWG NO. REV  
D D-411500 P-01

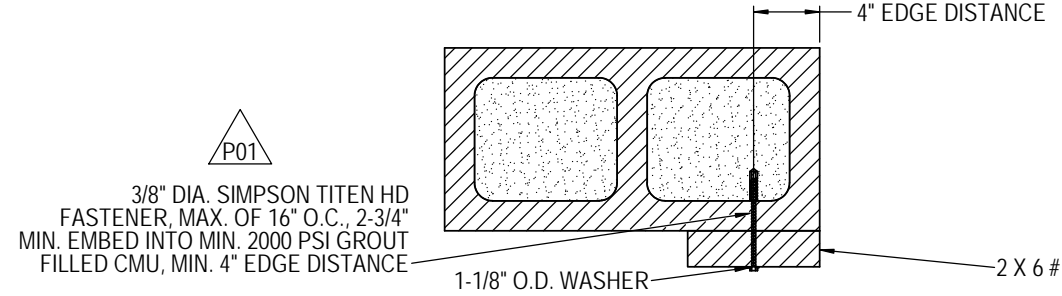
SCALE 1:12 UOM = EA SHEET 1 OF 4

JOHN E. SCATES, P.E.  
2560 KING ARTHUR BLVD  
LEWISVILLE, TX 75056  
FL PE 51737  
TX PE 56308 / F2203

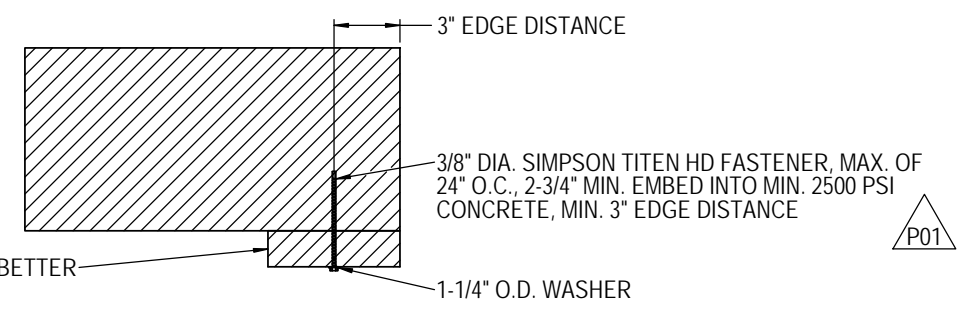
PROFESSIONAL ENGINEER'S SEAL PROVIDED ONLY FOR VERIFICATION OF WINDLOAD CONSTRUCTION DETAILS.



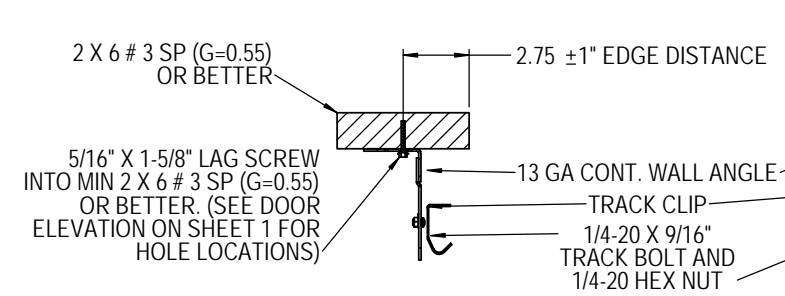
WOOD MOUNTED TO # 3 SOUTHERN PINE SUBSTRATE



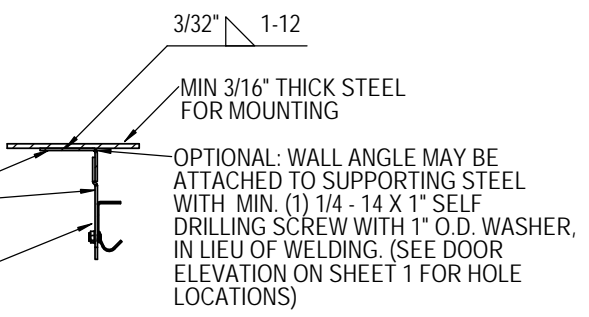
WOOD MOUNTED TO GROUT FILLED MASONRY BLOCK DETAIL



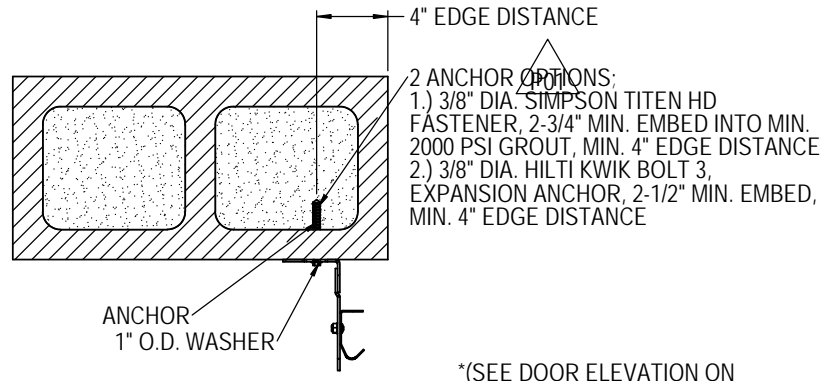
WOOD MOUNTED TO 2500 PSI CONCRETE DETAIL



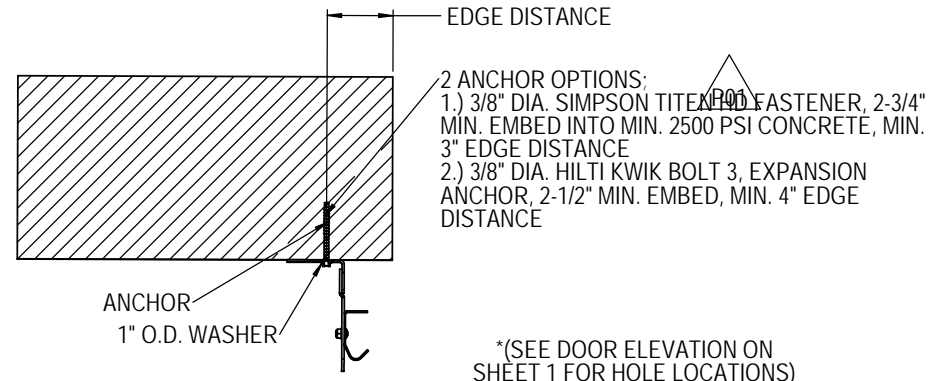
MOUNTING TO WOOD JAMB DETAIL



MOUNTING TO STEEL JAMB DETAIL



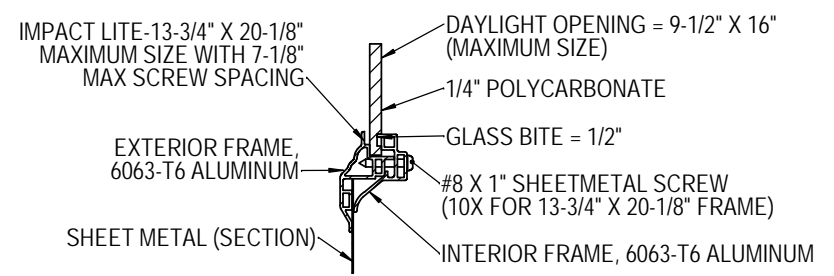
MOUNTING TO GROUT FILLED MASONRY BLOCK DETAIL



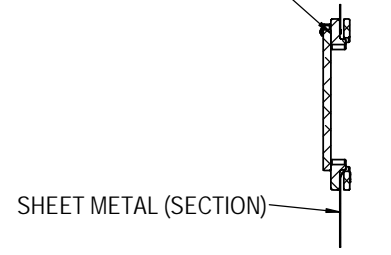
MOUNTING TO 2000 PSI CONCRETE DETAIL

SECTION E-E SCALE 1:4

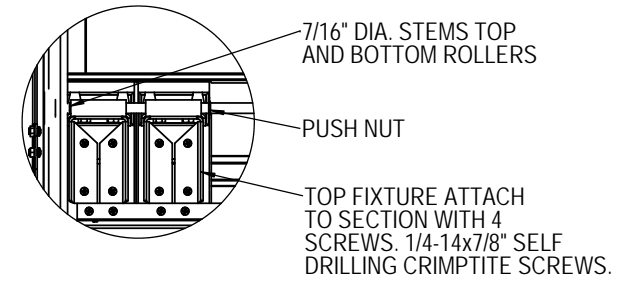
MIN. OF 5 FASTENERS FOR MAXIMUM SIZE OF 6" EXHAUST PORT. BOLT SIZE MIN 2-1/2" X 3/16" DIA. FOR INSULATED DOORS, AND MIN 3/4" X 3/16" DIA. FOR UNINSULATED DOORS.



WINDOW DETAIL SECTION F-F SCALE 1:2



EXHAUST PORT DETAIL SECTION G-G SCALE 1:4

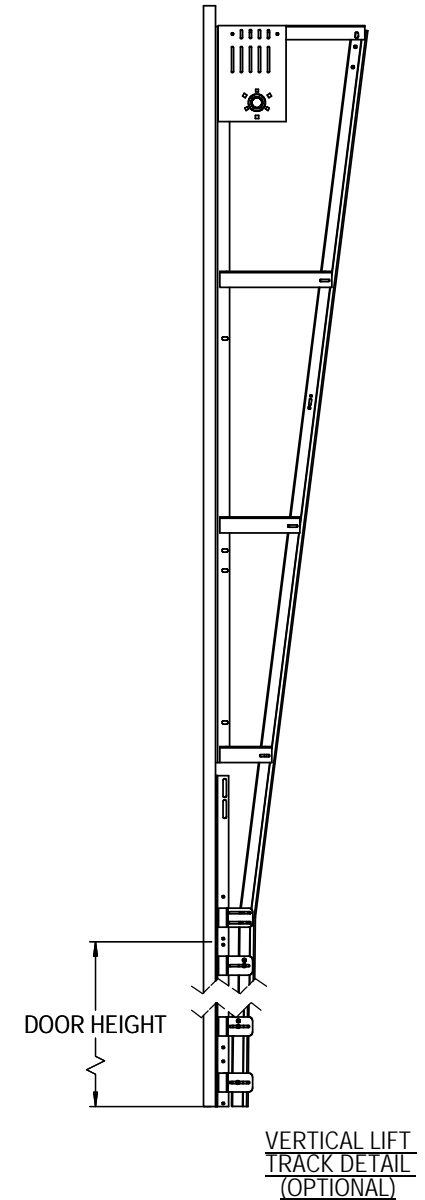
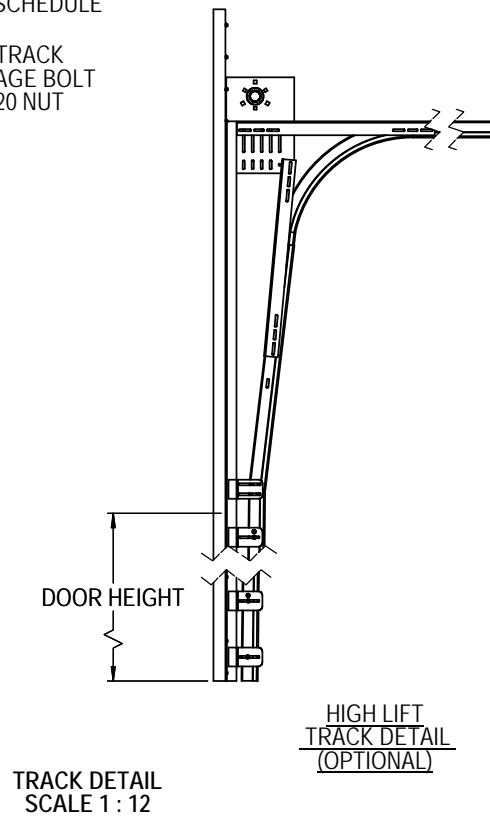
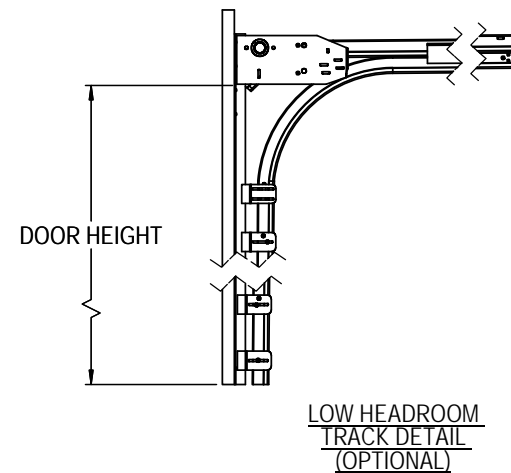
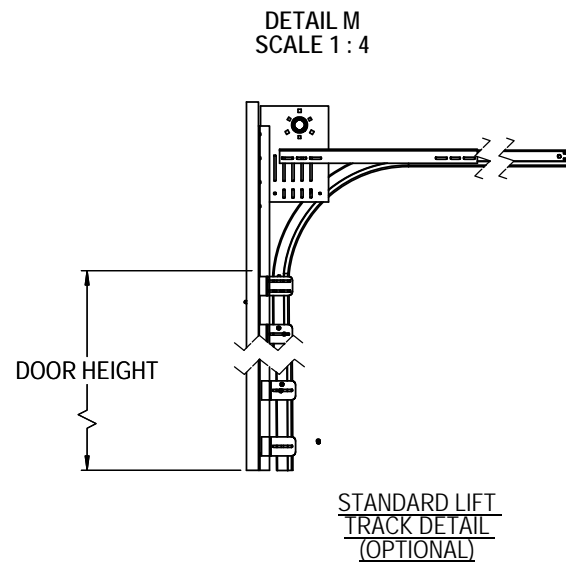
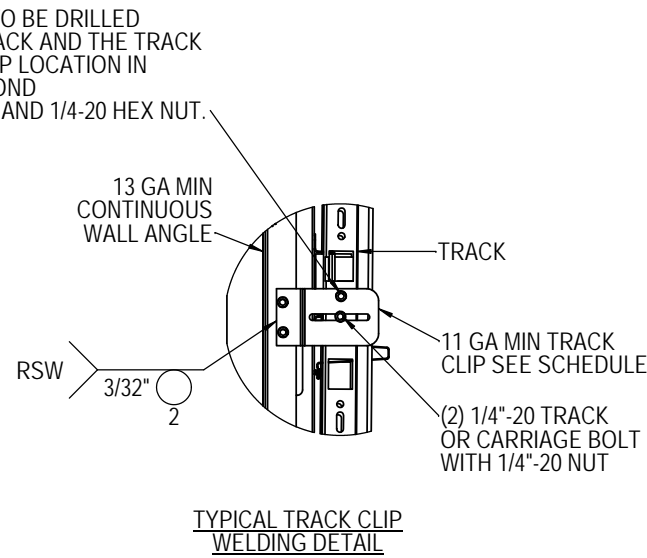
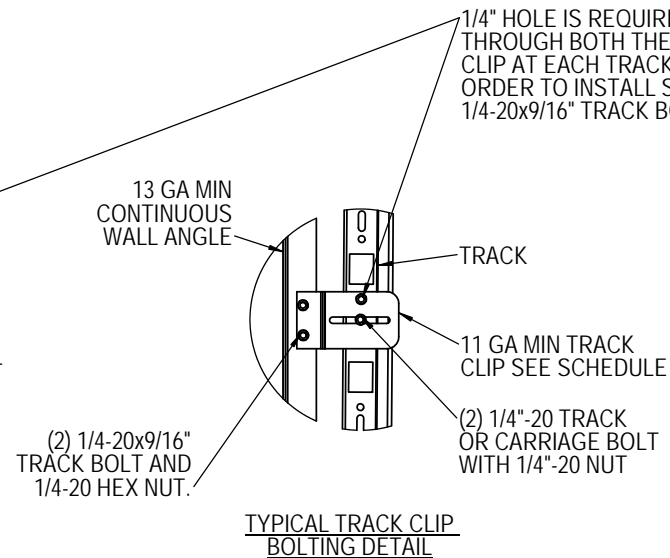
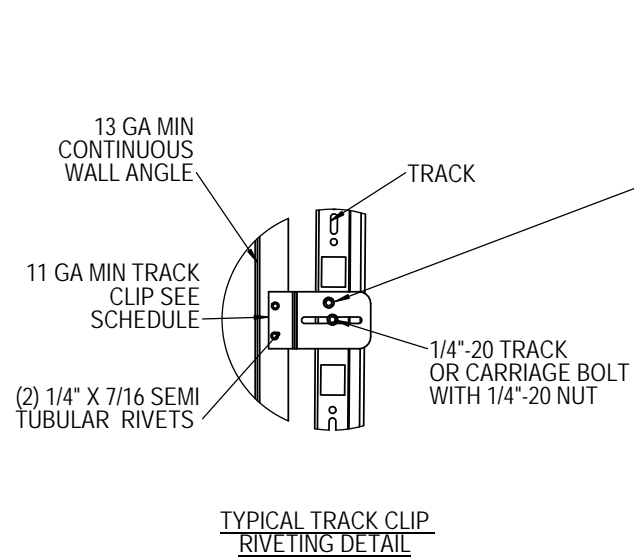
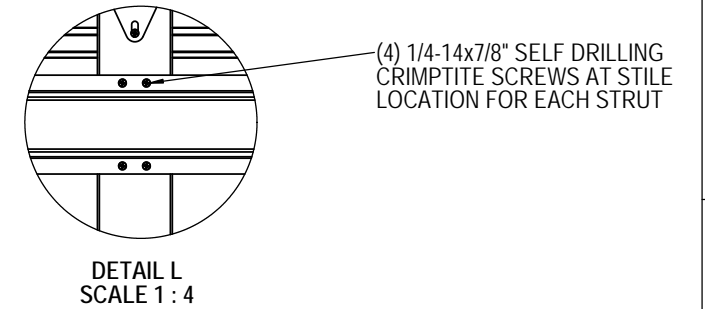
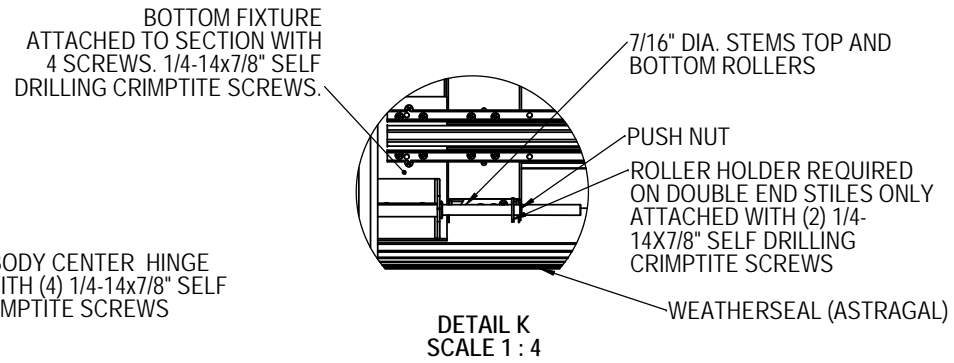
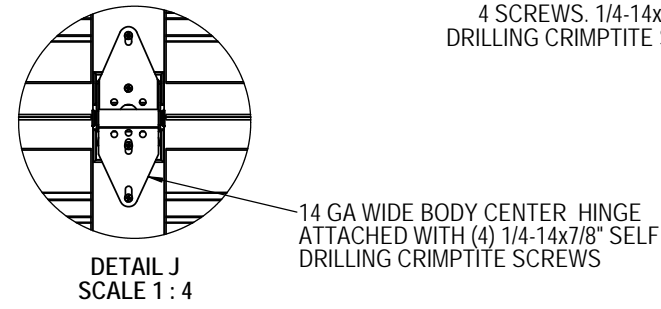
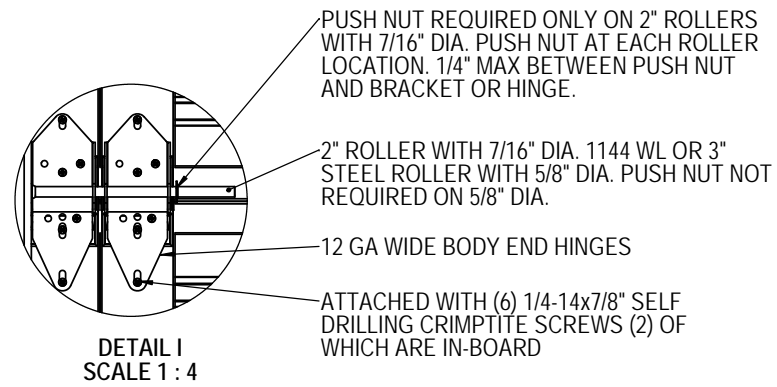


DETAIL H SCALE 1:4

JOHN E. SCATES, P.E.  
2560 KING ARTHUR BLVD  
LEWISVILLE, TX 75056  
FL PE 51737  
TX PE 56308 / F2203

PROFESSIONAL ENGINEER'S SEAL PROVIDED ONLY FOR VERIFICATION OF WINDLOAD CONSTRUCTION DETAILS.

<p>THIRD ANGLE PROJECTION</p>	<p>UNLESS OTHERWISE SPECIFIED</p> <p>INTERPRET DIMS &amp; TOLS PER ASME Y14.5M</p> <p>ALL DIMS ARE IN INCHES</p> <p>DO NOT SCALE</p> <p>DIMS CIRCLED WITH SYMBOL 'O' ARE CRITICAL TO QUALITY DESIGN FEATURES &amp; MUST MEET APPLICABLE IN-PROCESS INSPECTION STANDARDS.</p>		<p>APPROVALS DATE</p> <p>DRAWN E. CONRAD 4/4/18</p> <p>CHECKED D. KORNISH -</p> <p>APPROVED - -</p> <p>MATERIAL - -</p> <p>FINISH - -</p>	<p>The Genuine. The Original.</p> <p>LEWISVILLE, TEXAS</p>
	<p>TOLERANCES:</p> <p>X = ± .1</p> <p>XX = ± .03</p> <p>XXX = ± .010</p> <p>ANGULAR = ± .5°</p> <p>HOLES:</p> <p>&lt; Ø.251 = +.004/- .003</p> <p>Ø.251-Ø.500 = +.006/- .003</p> <p>&gt; Ø.500 = +.008/- .003</p>	<p>ALL GEOMETRY GOVERNED BY 3D CAD DATABASE: 411500</p>	<p>DESCRIPTION</p> <p>WINDLOAD COMMERCIAL SECTIONAL STEEL DOOR, 421/423/427/429, +50/-56PSF DADE COUNTY, 14'2" MAX WIDTH</p>	<p>SIZE DWG NO.</p> <p>D D-411500</p>
<p>SCALE 1:12 UOM = EA SHEET 2 OF 4</p>				



JOHN E. SCATES, P.E.  
2560 KING ARTHUR BLVD  
LEWISVILLE, TX 75056  
FL PE 51737  
TX PE 56308 / F2203

PROFESSIONAL ENGINEER'S SEAL PROVIDED ONLY FOR VERIFICATION OF WINDLOAD CONSTRUCTION DETAILS.

THIRD ANGLE PROJECTION

OVERHEAD DOOR CORP  
2501 S. STATE HWY 121  
SUITE 200  
LEWISVILLE, TEXAS 75067  
469-549-7100

UNLESS OTHERWISE SPECIFIED  
INTERPRET DIMS & TOLS PER ASME Y14.5M  
ALL DIMS ARE IN INCHES  
DO NOT SCALE  
DIMS CIRCLED WITH SYMBOL 'O' ARE CRITICAL TO QUALITY DESIGN FEATURES & MUST MEET APPLICABLE IN-PROCESS INSPECTION STANDARDS.

TOLERANCES:  
X = ± .1  
.XX = ± .03  
.XXX = ± .010  
ANGULAR = ± .5°  
HOLES:  
< Ø.251 = +.004/-.003  
Ø.251-Ø.500 = +.006/-.003  
> Ø.500 = +.008/-.003

APPROVALS		DATE
DRAWN	E. CONRAD	4/4/18
CHECKED	D. KORNISH	-
APPROVED	-	-
MATERIAL	-	-
FINISH	-	-

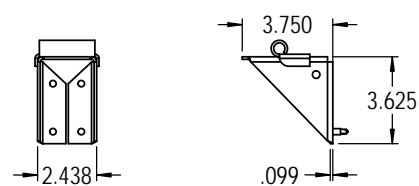
The Genuine. The Original.  
**OVERHEAD DOOR** LEWISVILLE, TEXAS

DESCRIPTION  
WINDLOAD COMMERCIAL SECTIONAL STEEL DOOR, 421/423/427/429, +50/-56PSF DADE COUNTY, 14'2" MAX WIDTH

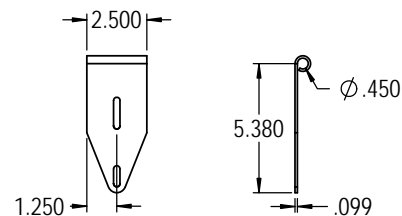
SIZE	DWG NO.	REV
D	D-411500	P-01

SCALE 1:12 UOM = EA SHEET 3 OF 4

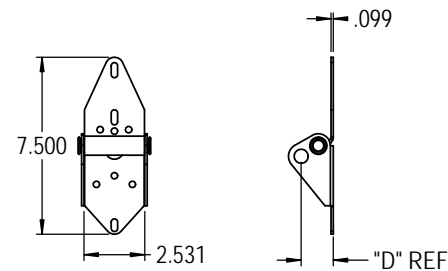
NOTES: (UNLESS OTHERWISE SPECIFIED)  
 1.FOR DIMENSION AND NOTE REFERENCES, REFER TO INDIVIDUAL DRAWINGS.



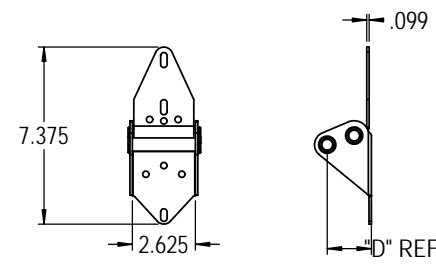
P/N 066590-0000, TOP FIXTURE  
 STANDARD  
 (ATTACH WITH (4) 1/4"-14 X 7/8"  
 SELF DRILLING CRIMPTITE  
 SCREWS)



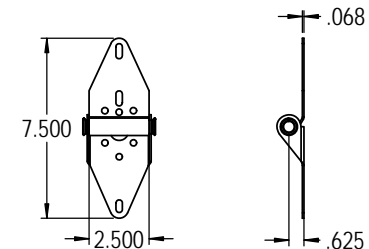
P/N 061371-0001 FIXTURE, TOP, 7/4  
 (ATTACH WITH (4) 1/4"-14 X 7/8"  
 SELF DRILLING CRIMPTITE  
 SCREWS)



P/N 400643-XXXX, END HINGE  
 STANDARD  
 (ATTACH WITH (6) 1/4"-14 X 7/8"  
 SELF DRILLING CRIMPTITE  
 SCREWS (2) OF WHICH IS IN-BOARD  
 HOLES)



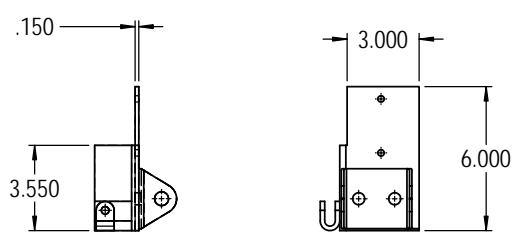
P/N 404043-XXXX, END HINGE  
 HEAVY DUTY 5/8" STEM  
 (ATTACH WITH (6) 1/4"-14 X 7/8" SELF  
 DRILLING CRIMPTITE SCREWS (2) OF  
 WHICH IS IN-BOARD HOLES)



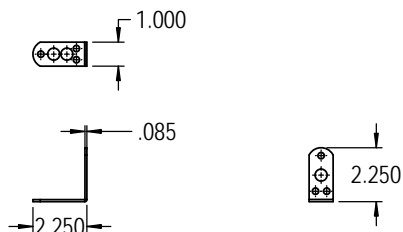
P/N 400735-XXXX, CENTER HINGE  
 STANDARD  
 (ATTACH WITH (4) 1/4"-14 X 7/8" SELF  
 DRILLING CRIMPTITE SCREWS)

TOP FIXTURE DETAILS

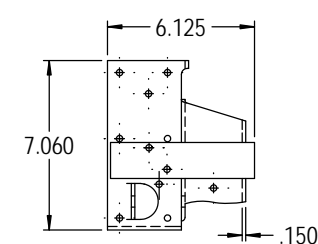
HINGE DETAILS



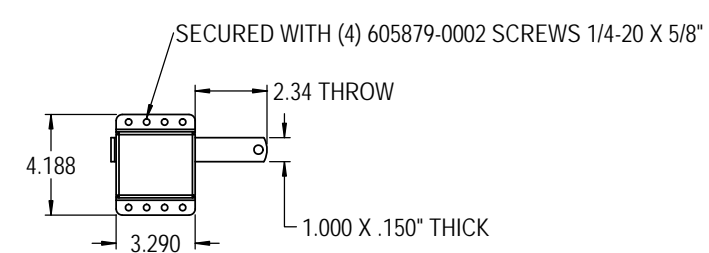
P/N 401124-XXXX, BOTTOM FIXTURE  
 (ATTACH WITH (4) 1/4"-14 X 7/8" SELF  
 DRILLING CRIMPTITE SCREWS)



P/N 405742-0001, BRACKET ROLLER SHAFT  
 (BRACKET ATTACHED)  
 (ATTACH WITH (2) 1/4"-14 X 7/8" SELF  
 DRILLING CRIMPTITE SCREWS)



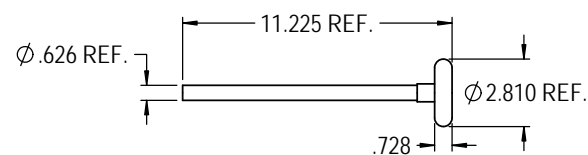
P/N 061537-XXXX, BOTTOM FIXTURE  
 (ATTACH WITH (4) 1/4"-14 X 7/8" SELF  
 DRILLING CRIMPTITE SCREWS)



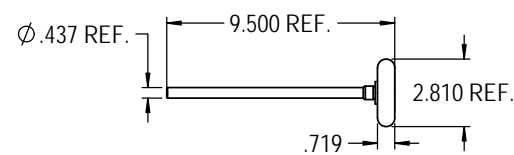
P/N 333871, SIDE LOCK ASSY

BOTTOM FIXTURE DETAILS

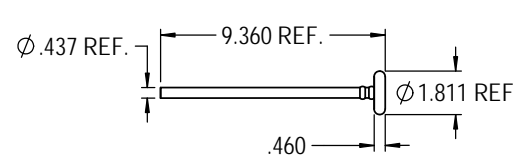
LOCK DETAILS



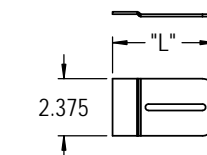
P/N 404046-0002, ROLLER ASSY.  
 3" TR-7 5/8" STEM



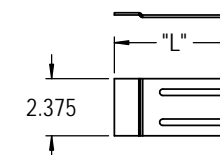
P/N 61337-0006, ROLLER ASSY.  
 3" TR-7 7/16" STEM



P/N 318700, ROLLER ASSY.  
 2" WL 1144



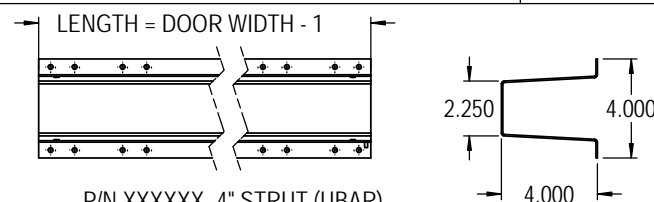
P/N 405965-XXXX TRACK CLIP  
 11 GA



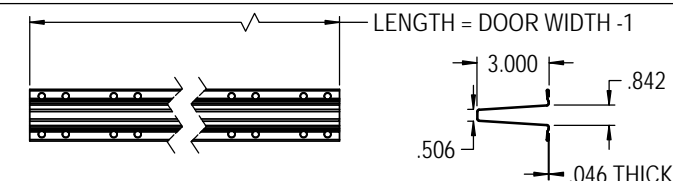
P/N 408263-XXXX JOINT BRACKET  
 11 GA

ROLLER STEM ASSY DETAILS

BRACKET DETAILS



P/N XXXXXX- 4" STRUT (UBAR)  
 80 KSI MIN. YIELD STRENGTH, 4" X 16 GA

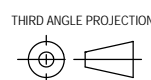


P/N 3347262- STRUT, 3, OPEN WL (UBAR)  
 80 KSI MIN. YIELD STRENGTH, 3" X 18 GA

STRUT DETAILS

JOHN E. SCATES, P.E.  
 2560 KING ARTHUR BLVD  
 LEWISVILLE, TX 75056  
 FL PE 51737  
 TX PE 56308 / F2203

PROFESSIONAL ENGINEER'S SEAL PROVIDED ONLY FOR  
 VERIFICATION OF WINDLOAD CONSTRUCTION DETAILS.



OVERHEAD DOOR CORP  
 2501 S. STATE HWY 121  
 SUITE 200  
 LEWISVILLE, TEXAS 75067  
 469-549-7100

UNLESS OTHERWISE SPECIFIED  
 INTERPRET DIMS & TOLS  
 PER ASME Y14.5M  
 ALL DIMS ARE IN  
 INCHES  
 DO NOT SCALE  
 DIMS CIRCLED WITH SYMBOL 'O'  
 ARE CRITICAL TO QUALITY DESIGN  
 FEATURES & MUST MEET APPLICABLE  
 IN-PROCESS INSPECTION STANDARDS.

TOLERANCES:  
 X = ±  
 XX = ±  
 XXX = ±  
 ANGULAR = ± °  
 HOLES:  
 < Ø.251 = +/-  
 Ø.251-Ø.500 = +/-  
 > Ø.500 = +/-

APPROVALS DATE  
 DRAWN E. CONRAD 4/4/18  
 CHECKED D. KORNISH  
 APPROVED  
 MATERIAL  
 FINISH

The Genuine. The Original.  
 LEWISVILLE, TEXAS  
 DESCRIPTION  
 WINDLOAD COMMERCIAL SECTIONAL  
 STEEL DOOR, 421/423/427/429, +50/-56PSF  
 DADE COUNTY, 14'2" MAX WIDTH  
 SIZE DWG NO.  
 D D-411500  
 REV  
 P-01  
 SCALE 1:12 UOM = EA SHEET 4 OF 4