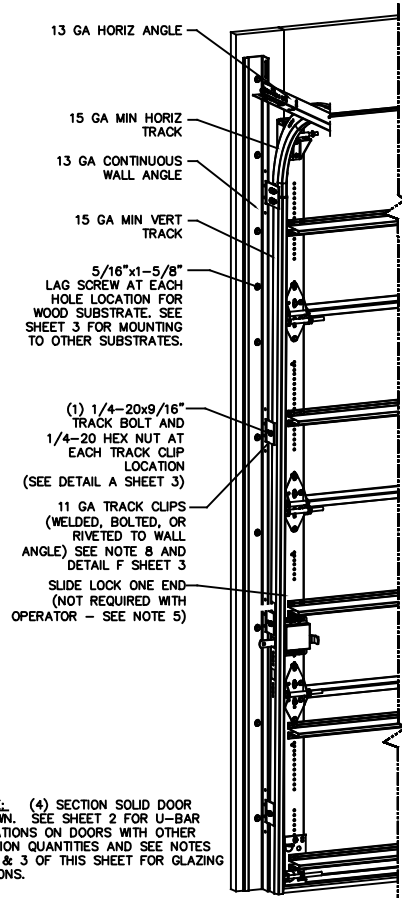


NOTES

- NON-IMPACT RESISTANT OPTION - 125" MINIMUM DSB GLAZING MEETS UNIFORM STATIC DESIGN PRESSURES SHOWN ON THIS DRAWING. GLAZING SHALL HAVE A MAXIMUM HEIGHT OF 6.70" AND A MAXIMUM LENGTH OF 24.00". GLAZING IS NOT IMPACT RESISTANT AND DOES NOT MEET THE REQUIREMENTS FOR WIND-BORNE DEBRIS REGIONS.
- IMPACT RESISTANT GLAZING OPTION - IMPACT RESISTANT GLAZING SYSTEM MAY BE INSTALLED IN INTERMEDIATE SECTIONS (WITH OR WITHOUT DECORATIVE INSERTS). GLAZING SHALL BE 1/4" POLYCARBONATE. MAXIMUM GLAZING DIMENSIONS SHALL BE 11" x 17", FASTENED WITH A MINIMUM #8 X 1" SMS; 3X ALONG THE HORIZONTAL AND 2X ALONG THE VERTICAL.
- ALUMINUM FULL VIEW OPTION - ALUMINUM FULL VIEW SECTION MAY REPLACE ANY SECTION EXCEPT TOP AND BOTTOM PANELS. ALUMINUM FULL VIEW SECTION SHALL HAVE RAILS AND STILES OF EXTRUDED ALUMINUM ALLOY 6063-T6 AND .125" MINIMUM DSB GLAZING INSTALLED WITH ALUMINUM RETAINERS IN ORDER TO MEET UNIFORM STATIC DESIGN PRESSURES SHOWN ON THIS DRAWING. AFV PANEL SIZE IS 45.5"x21.9" (MAX). GLAZING IS NOT IMPACT RESISTANT AND DOES NOT MEET THE REQUIREMENTS FOR WIND-BORNE DEBRIS REGIONS.
- MINIMUM OF 1" OVERLAP ON BOTH JAMBS REQUIRED TO MEET NEGATIVE DESIGN PRESSURES.
- SLIDE LOCK OR OPERATOR REQUIRED.
- SECTION STEEL TO HAVE THE FOLLOWING MINIMUM THICKNESS:  
421, 423 - 20 GA  
427, 429 - 24 GA  
434, 436 - 25 GA
- THE DESIGN OF THE SUPPORTING STRUCTURAL ELEMENTS SHALL BE THE RESPONSIBILITY OF THE PROFESSIONAL OF RECORD FOR THE BUILDING OR STRUCTURE AND IN ACCORDANCE WITH CURRENT BUILDING CODES FOR THE LOADS LISTED ON THIS DRAWING.
- TRACK CLIPS SHALL BE LOCATED WITH CENTERLINE OF BOTTOM CLIP SPACED 10" MAX FROM BOTTOM OF TRACK AND REMAINING TRACK CLIPS SPACED AT 24" O.C. MAX. SPACING BETWEEN TOP TRACK CLIP AND SPLICE PLATE SHALL BE 30" O.C. MAX.
- WHEN MOUNTING TO WOOD, DOOR JAMB TO BE MINIMUM 2x6 STRUCTURAL GRADE LUMBER. REFER TO JAMB CONNECTION SUPPLEMENT FOR ATTACHMENT TO SUPPORTING STRUCTURE.

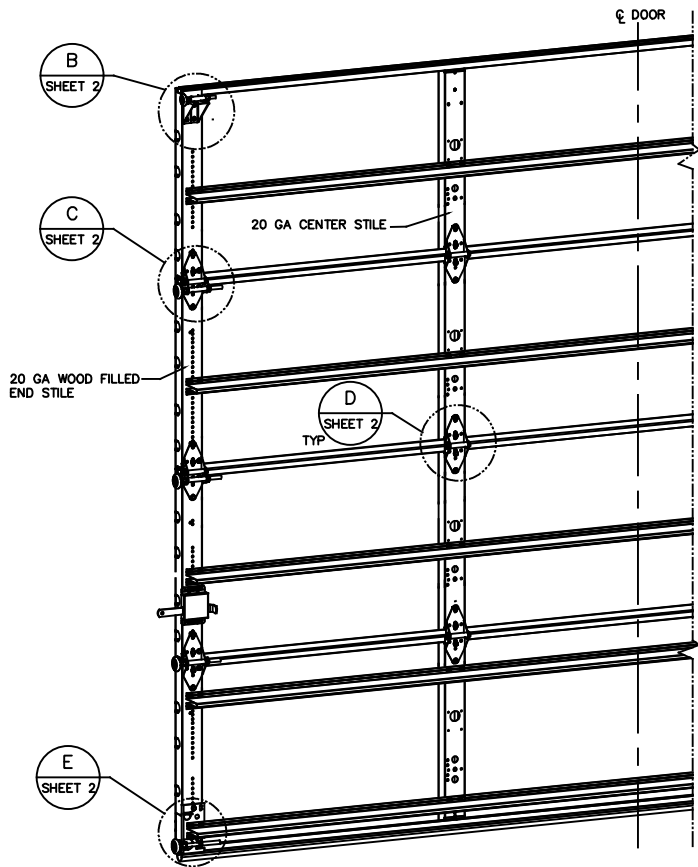
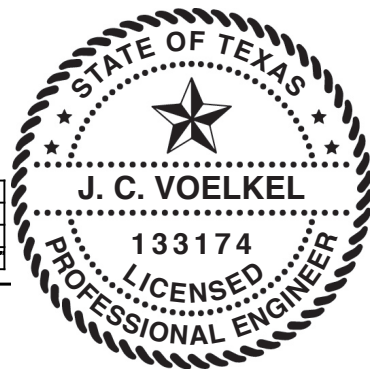


NOTE: (4) SECTION SOLID DOOR SHOWN. SEE SHEET 2 FOR U-BAR LOCATIONS ON DOORS WITH OTHER SECTION QUANTITIES AND SEE NOTES 1, 2 & 3 OF THIS SHEET FOR GLAZING OPTIONS.

SUPERIMPOSED DESIGN PRESSURE LOADS ON SUPPORTING STRUCTURE

MAX DOOR WIDTH	DOOR HEIGHT	MAX UNIFORM LOAD EACH JAMB (PLF)
10'-4"	ALL	+226.6/-256.5

STATIC PRESSURE RATINGS	APPROVED SIZES
DESIGN PRESSURE(PSF): +44.0/-49.8	MAX WIDTH: 10'-4" MAX HEIGHT: 24'-1"
IMPACT/CYCLIC RATED: YES	MAX SECTION HEIGHT: 24'



REVISIONS				
CR	REV	DESCRIPTION	DATE	APPROVAL
VL005	-	INITIAL DRAWING	1/14/21	TLC
VL005	A	ADDED AFV PANEL SIZE	4/28/21	TLC

THE DOORS ARE DESIGNED AND MANUFACTURED TO COMPLY WITH THE 2018 IRC AND THE 2018 IBC.

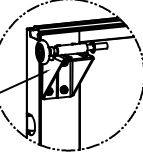
THE DRAWINGS AND ALL OTHER INFORMATION CONTAINED HEREIN ARE THE CONFIDENTIAL AND PROPRIETARY PROPERTY OF OVERHEAD DOOR CORPORATION AND ITS AFFILIATED COMPANIES. THIS DRAWING AND INFORMATION, IN WHOLE OR IN PART, MAY NOT BE COPIED IN ANY MANNER OR DISCLOSED TO ANYONE WITHOUT THE PRIOR WRITTEN CONSENT OF OVERHEAD DOOR CORPORATION. NO DISCLOSURE OF ANY OF THIS DRAWING OR INFORMATION IS INTENDED TO OPERATE AS A LICENSE OR AUTHORIZATION TO USE IT FOR ANY PURPOSE WITHOUT THE SPECIFIC WRITTEN CONSENT OF OVERHEAD DOOR CORPORATION.												
REF DWG	USED ON	TOLERANCES UNLESS OTHERWISE SPECIFIED			FINISH N/A	MATERIAL N/A	UNIT OF MEASURE EA	DATE 4/28/21	DRAWN BY T CLARK	DATE 1/14/21	DRAWING TITLE WINDLOAD, OPTION CODE 2075 SERIES 421/423/427/429/434/436, 44.0/-48.9 PSF, 10'-4" MAX	
		HOLE DIAMETER UNDER .251 +.004/- .003 .251 TO .500 +.006/- .003 OVER .500 +.008/- .003	WHOLE NUMBERS ± .25 X ± .1 XX ± .03 XXX ± .010 ANGLES ± .5°	FRACTIONS ± 1/16								THE GENUINE, THE ORIGINAL. LEWISVILLE, TEXAS REGISTERED
											SCALE: N/A	SHEET 1 OF 3

1/4-20x9/16" TRACK BOLT AND 1/4-20 HEX NUT THROUGH THE SLOT IN THE TRACK AND TRACK CLIP



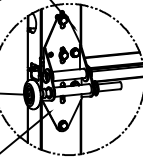
DETAIL A

12 GA COMMERCIAL TOP FRAME BRACKET WITH 13 GA ROLLER CARRIER ATTACHED WITH (4) 1/4-14x7/8" SELF DRILLING CRIMPITTE SCREWS



DETAIL B

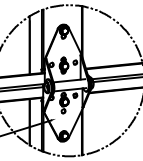
ADD (2) 1/4-14x7/8" SELF DRILLING CRIMPITTE SCREWS (INSIDE OF EACH INSIDE END HINGE)



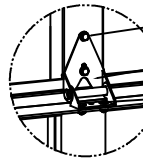
DETAIL C

2" STEEL ROLLER WITH 5-1/8" STEM AND 7/16" PUSHNUT AT EACH ROLLER LOCATION. 1/4" MAX BETWEEN PUSHNUT AND BRACKET OR HINGE

14 GA WIDE BODY END HINGE TO ATTACH SECTIONS ONE AND TWO.  
13 GA WIDE BODY END HINGE TO ATTACH REMAINING SECTIONS. FOR ALL, ATTACH WITH (4) 1/4-14x7/8" SELF DRILLING CRIMPITTE SCREWS



SOLID SECTION

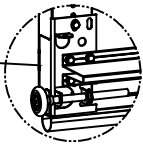


AFV SECTION

(2) 1/4-14x7/8" SELF DRILLING CRIMPITTE SCREWS  
HALF HINGE  
(2) 1/4 x 1/2" CARRIAGE BOLTS AND 1/4" FLANGE NUTS

DETAIL D

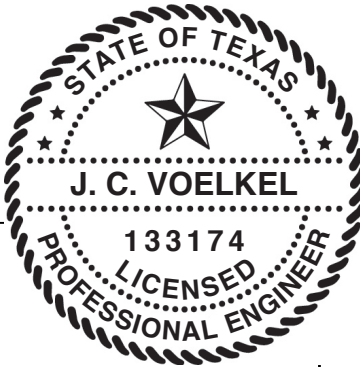
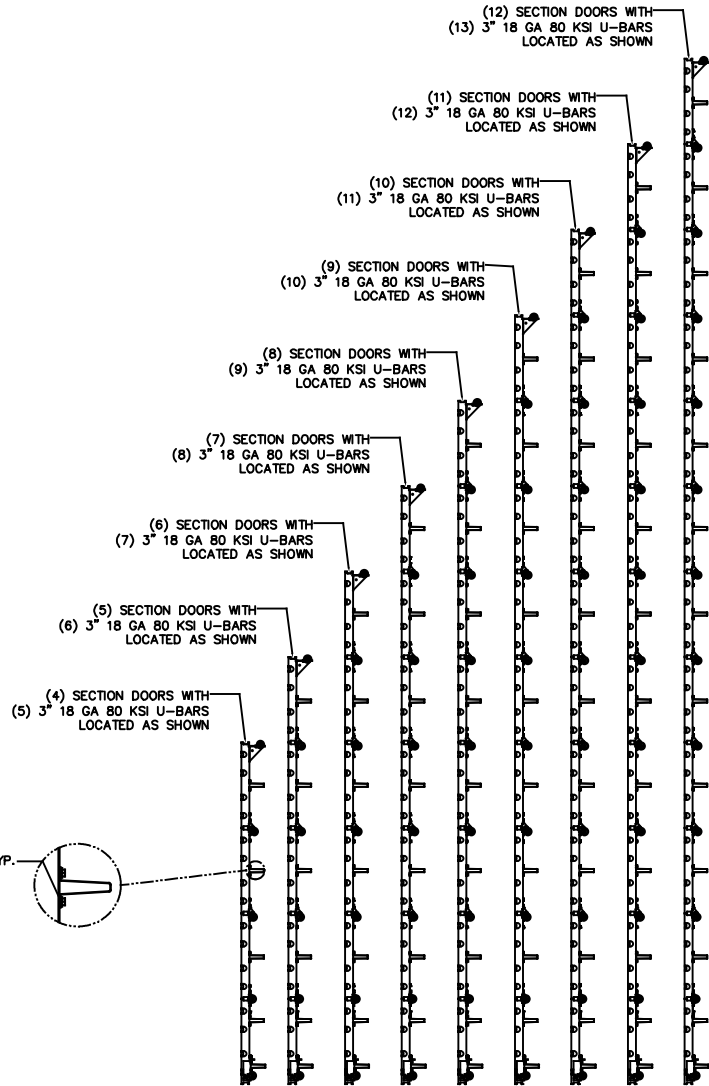
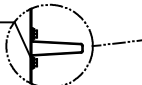
14 GA WIDE BODY INTERMEDIATE HINGE ATTACHED WITH (4) 1/4-14x7/8" SELF DRILLING CRIMPITTE SCREWS



DETAIL E

12 GA BOTTOM BRACKET ATTACHED WITH (5) 1/4-14x7/8" SELF DRILLING CRIMPITTE SCREWS, (4) THROUGH STRUT AND BRACKET

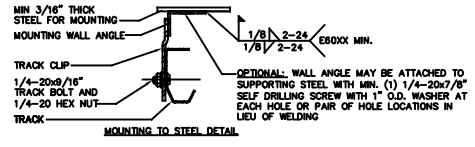
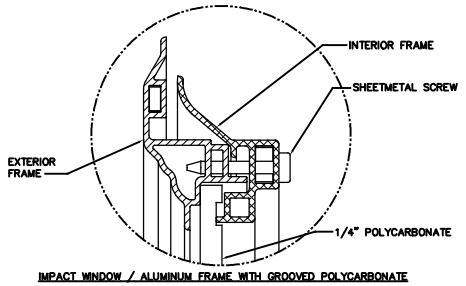
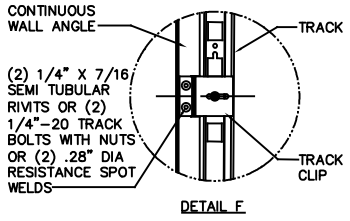
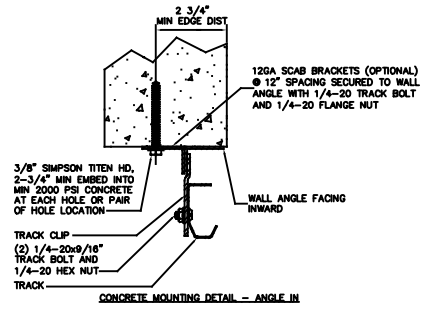
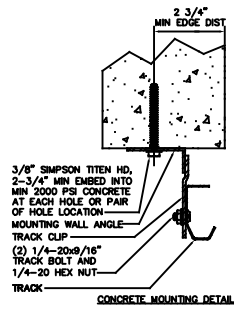
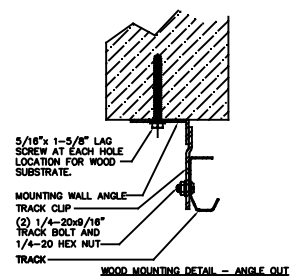
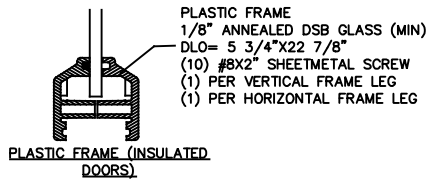
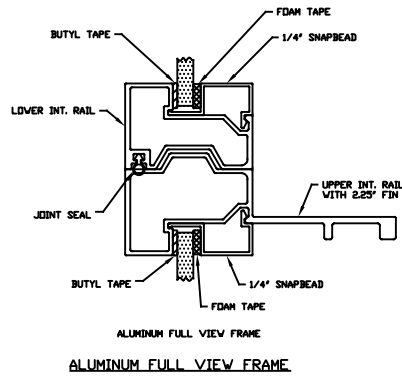
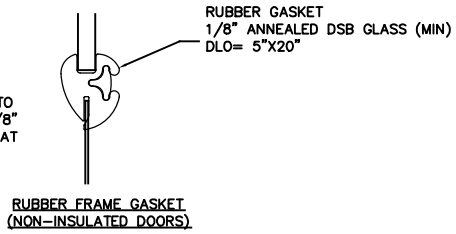
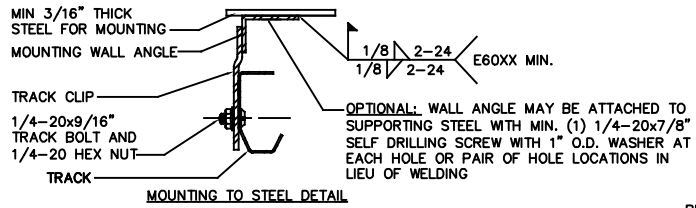
ATTACH U-BARS WITH (4) 1/4-14x7/8" SELF DRILLING CRIMPITTE SCREWS AT ALL STILE LOCATIONS, TYP.



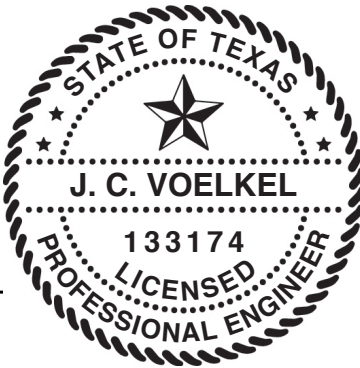
J. CHRISTIAN VOELKEL, PE  
312 N. NEW VARRINGTON ROAD, UNIT 1A  
PENSACOLA, FL  
FL PE 88269  
TX PE 133174

STATIC PRESSURE RATINGS	APPROVED SIZES
DESIGN PRESSURE(PSF): +44.0/-49.8	MAX WIDTH: 10'-4"
	MAX HEIGHT: 24'-1"
IMPACT/CYCLIC RATED: YES	MAX SECTION HEIGHT: 24'

THE DRAWINGS AND ALL OTHER INFORMATION CONTAINED HEREIN ARE THE CONFIDENTIAL AND PROPRIETARY PROPERTY OF OVERHEAD DOOR CORPORATION AND ITS AFFILIATED COMPANIES. THIS DRAWING AND INFORMATION, IN WHOLE OR IN PART, MAY NOT BE COPIED IN ANY MANNER OR DISCLOSED TO ANYONE WITHOUT THE PRIOR WRITTEN CONSENT OF OVERHEAD DOOR CORPORATION. NO DISCLOSURE OF ANY OF THIS DRAWING OR INFORMATION IS INTENDED TO OPERATE AS A LICENSE OR AUTHORIZATION TO USE IT FOR ANY PURPOSE WITHOUT THE SPECIFIC WRITTEN CONSENT OF OVERHEAD DOOR CORPORATION.																																	
	<table border="1"> <tr> <th colspan="2">TOLERANCES UNLESS OTHERWISE SPECIFIED</th> </tr> <tr> <td>HOLE DIAMETER</td> <td>± .015</td> </tr> <tr> <td>UNDER .251 +.004/- .003</td> <td>± .25</td> </tr> <tr> <td>.251 TO .500 +.006/- .003</td> <td>± .1</td> </tr> <tr> <td>OVER .500 +.008/- .003</td> <td>± .03</td> </tr> <tr> <td>FRACTIONS</td> <td>± .010</td> </tr> <tr> <td>ANGLES</td> <td>± .5°</td> </tr> </table>	TOLERANCES UNLESS OTHERWISE SPECIFIED		HOLE DIAMETER	± .015	UNDER .251 +.004/- .003	± .25	.251 TO .500 +.006/- .003	± .1	OVER .500 +.008/- .003	± .03	FRACTIONS	± .010	ANGLES	± .5°	<table border="1"> <tr> <th>FINISH</th> <th>UNIT OF MEASURE</th> </tr> <tr> <td>N/A</td> <td>EA</td> </tr> </table>	FINISH	UNIT OF MEASURE	N/A	EA	<table border="1"> <tr> <th>DATE</th> <th>BY</th> <th>DATE</th> <th>BY</th> </tr> <tr> <td>1/14/21</td> <td>T. CLARK</td> <td>1/8/21</td> <td>J. QIAN</td> </tr> <tr> <td>4/28/21</td> <td>T. CLARK</td> <td></td> <td></td> </tr> </table>	DATE	BY	DATE	BY	1/14/21	T. CLARK	1/8/21	J. QIAN	4/28/21	T. CLARK		
TOLERANCES UNLESS OTHERWISE SPECIFIED																																	
HOLE DIAMETER	± .015																																
UNDER .251 +.004/- .003	± .25																																
.251 TO .500 +.006/- .003	± .1																																
OVER .500 +.008/- .003	± .03																																
FRACTIONS	± .010																																
ANGLES	± .5°																																
FINISH	UNIT OF MEASURE																																
N/A	EA																																
DATE	BY	DATE	BY																														
1/14/21	T. CLARK	1/8/21	J. QIAN																														
4/28/21	T. CLARK																																
<table border="1"> <tr> <th colspan="2">DRAWING TITLE</th> </tr> <tr> <td>WINDLOAD, OPTION CODE 2075</td> <td></td> </tr> <tr> <td>SERIES 421/423/427/429/434/436, 44.0/-48.9 PSF, 10'-4" MAX</td> <td></td> </tr> <tr> <td>DRAWING NUMBER</td> <td>D-411788</td> </tr> <tr> <td>SCALE</td> <td>N/A</td> </tr> <tr> <td>SHEET</td> <td>2 OF 3</td> </tr> </table>	DRAWING TITLE		WINDLOAD, OPTION CODE 2075		SERIES 421/423/427/429/434/436, 44.0/-48.9 PSF, 10'-4" MAX		DRAWING NUMBER	D-411788	SCALE	N/A	SHEET	2 OF 3																					
DRAWING TITLE																																	
WINDLOAD, OPTION CODE 2075																																	
SERIES 421/423/427/429/434/436, 44.0/-48.9 PSF, 10'-4" MAX																																	
DRAWING NUMBER	D-411788																																
SCALE	N/A																																
SHEET	2 OF 3																																



STATIC PRESSURE RATINGS	APPROVED SIZES
DESIGN PRESSURE(PSF): +44.0/-49.8	MAX WIDTH: 10'-4"
	MAX HEIGHT: 24'-1"
IMPACT/CYCLIC RATED: YES	MAX SECTION HEIGHT: 24'



THESE DRAWINGS AND ALL OTHER INFORMATION CONTAINED HEREIN ARE THE CONFIDENTIAL AND PROPRIETARY PROPERTY OF OVERHEAD DOOR CORPORATION AND ITS AFFILIATED COMPANIES. THIS DRAWING AND INFORMATION, IN WHOLE OR IN PART, MAY NOT BE COPIED IN ANY MANNER OR DISCLOSED TO ANYONE WITHOUT THE PRIOR WRITTEN CONSENT OF OVERHEAD DOOR CORPORATION. NO DISCLOSURE OF ANY OF THIS DRAWING OR INFORMATION IS INTENDED TO OPERATE AS A LICENSE OR AUTHORIZATION TO USE IT FOR ANY PURPOSE WITHOUT THE SPECIFIC WRITTEN CONSENT OF OVERHEAD DOOR CORPORATION.		FINISH		DATE		DRAWING TITLE	
REF DWG	USED ON	EA	N/A	4/28/21	1/14/21	1/14/21	WINDOW/DOOR, OPTION CODE 2075
							SERIES 451/423/427/429/434/436, 44.0/-48.9 PSF, 10'-4" MAX
							DRAWING NUMBER D-411788
							SCALE: N/A SHEET 3 OF 3