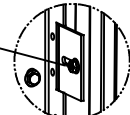
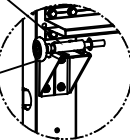


1/4"-20x9/16" TRACK BOLT AND 1/4"-20 HEX NUT THROUGH THE SLOT IN THE TRACK AND TRACK CLIP



DETAIL A

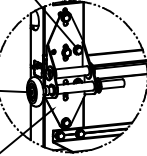
12 GA COMMERCIAL TOP FRAME BRACKET WITH 13 GA ROLLER CARRIER, ATTACHED WITH (4) 1/4"-14x7/8" SELF DRILLING CRIMPITITE SCREWS



DETAIL B

3" STEEL ROLLER WITH 7/16" DIA. x 9" LONG STEM AND 7/16" PUSH NUT AT TOP ROLLER LOCATION. 1/4" MAX BETWEEN PUSH NUT AND BRACKET.

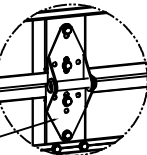
ADD (2) 1/4"-14x7/8" SELF DRILLING CRIMPITITE SCREWS (INSIDE OF EACH INSIDE END HINGE)



DETAIL C

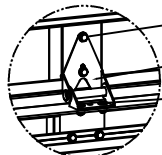
2" STEEL ROLLER WITH 5-1/8" STEM AND 7/16" PUSHNUT AT EACH ROLLER LOCATION. 1/4" MAX BETWEEN PUSHNUT AND BRACKET OR HINGE

11 GA MODIFIED WIDE BODY END HINGE ATTACHED WITH (4) 1/4"-14x7/8" SELF DRILLING CRIMPITITE SCREWS



SOLID SECTION

14 GA WIDE BODY INTERMEDIATE HINGE ATTACHED WITH (4) 1/4"-14x7/8" SELF DRILLING CRIMPITITE SCREWS



AEV SECTION

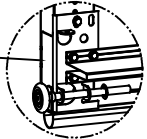
(2) 1/4"-14x7/8" SELF DRILLING CRIMPITITE SCREWS

HALF HINGE

(2) 1/4" x 1/2" CARRIAGE BOLTS AND 1/4" FLANGE NUTS

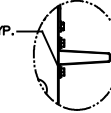
DETAIL D

12 GA BOTTOM BRACKET ATTACHED WITH (3) 1/4"-14x7/8" SELF DRILLING CRIMPITITE SCREWS



DETAIL E

ATTACH U-BARS WITH (4) 1/4"-14x7/8" SELF DRILLING CRIMPITITE SCREWS AT ALL STILE LOCATIONS, TYP.



(12) SECTION DOORS WITH (18) 3" 18 GA 80 KSI U-BARS LOCATED AS SHOWN

(11) SECTION DOORS WITH (17) 3" 18 GA 80 KSI U-BARS LOCATED AS SHOWN

(10) SECTION DOORS WITH (15) 3" 18 GA 80 KSI U-BARS LOCATED AS SHOWN

(9) SECTION DOORS WITH (14) 3" 18 GA 80 KSI U-BARS LOCATED AS SHOWN

(8) SECTION DOORS WITH (12) 3" 18 GA 80 KSI U-BARS LOCATED AS SHOWN

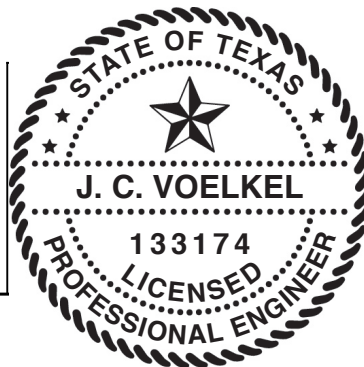
(7) SECTION DOORS WITH (11) 3" 18 GA 80 KSI U-BARS LOCATED AS SHOWN

(6) SECTION DOORS WITH (9) 3" 18 GA 80 KSI U-BARS LOCATED AS SHOWN

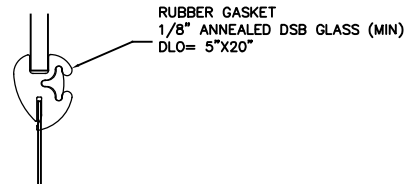
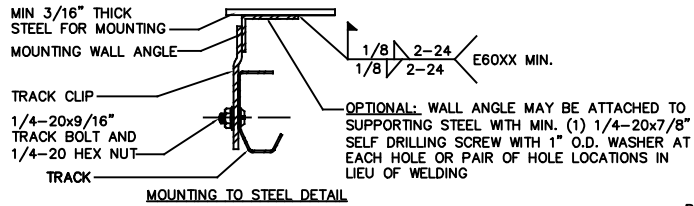
(5) SECTION DOORS WITH (8) 3" 18 GA 80 KSI U-BARS LOCATED AS SHOWN

(4) SECTION DOORS WITH (6) 3" 18 GA 80 KSI U-BARS LOCATED AS SHOWN

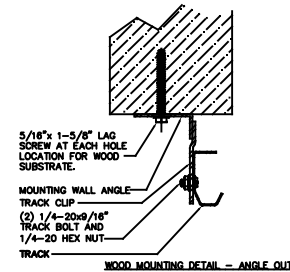
STATIC PRESSURE RATINGS	APPROVED SIZES
DESIGN PRESSURE(PSF): +31.6/-35.4	MAX WIDTH: 16'-2"
	MAX HEIGHT: 24'-1"
IMPACT/CYCLIC RATED: YES	MAX SECTION HEIGHT: 24'



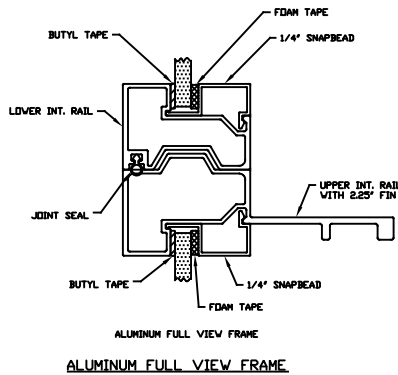
THE DRAWINGS AND ALL OTHER INFORMATION CONTAINED HEREIN ARE THE CONFIDENTIAL AND PROPRIETARY PROPERTY OF OVERHEAD DOOR CORPORATION AND ITS AFFILIATED COMPANIES. THIS DRAWING AND INFORMATION, IN WHOLE OR IN PART, MAY NOT BE COPIED IN ANY MANNER OR DISCLOSED TO ANYONE WITHOUT THE PRIOR WRITTEN CONSENT OF OVERHEAD DOOR CORPORATION. NO DISCLOSURE OF ANY OF THIS DRAWING OR INFORMATION IS INTENDED TO OPERATE AS A LICENSE OR AUTHORIZATION TO USE IT FOR ANY PURPOSE WITHOUT THE SPECIFIC WRITTEN CONSENT OF OVERHEAD DOOR CORPORATION.			
 HOLE DIAMETER UNDER .251 +.004/- .003 .251 TO .500 +.006/- .003 OVER .500 +.008/- .003 FRACTIONS ± 1/16	WHOLE NUMBERS: ± .25 .1 .X .XX .XXX ANGLES: ± .5°	FINISH	N/A
		UNIT OF MEASURE	EA
REF DWG	USED ON	MATERIAL: N/A FINISH: N/A LEVINGVILLE, TEXAS THE GENUINE, THE ORIGINAL.	
		DRAWN BY: T CLARK CHECKED BY: J QIAN APPROVED BY: T CLARK	DATE: 1/14/21 1/8/21 2/17/21
		DRAWING TITLE: JINDI LAD OPTION CODE 2046 SERIES 421/423/427/429/434/436, 316/-35.4 PSF, 16'-2" MAX DRAWING NUMBER: D-411800 SCALE: N/A SHEET 2 OF 3	



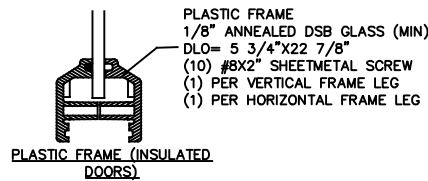
RUBBER FRAME GASKET (NON-INSULATED DOORS)



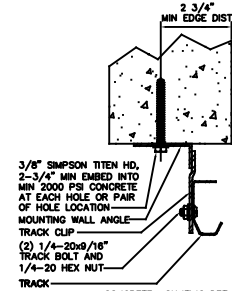
WOOD MOUNTING DETAIL - ANGLE OUT



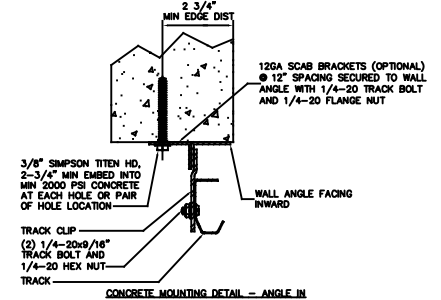
ALUMINUM FULL VIEW FRAME



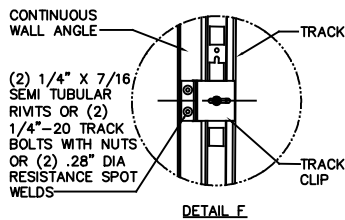
PLASTIC FRAME (INSULATED DOORS)



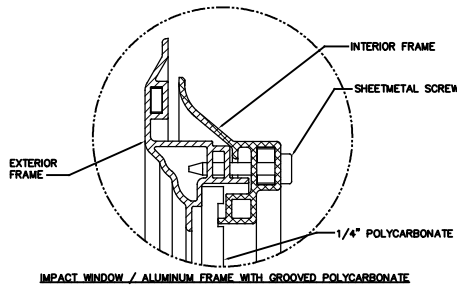
CONCRETE MOUNTING DETAIL - ANGLE OUT



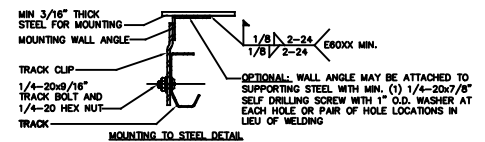
CONCRETE MOUNTING DETAIL - ANGLE IN



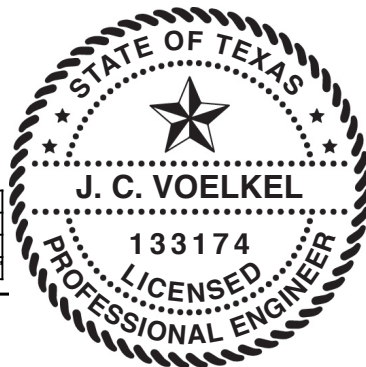
DETAIL F



IMPACT WINDOW / ALUMINUM FRAME WITH GROOVED POLYCARBONATE



MOUNTING TO STEEL DETAIL



STATIC PRESSURE RATINGS	APPROVED SIZES
DESIGN PRESSURE(PSF): +31.6/-35.4	MAX WIDTH: 16'-2"
	MAX HEIGHT: 24'-1"
IMPACT/CYCLIC RATED: YES	MAX SECTION HEIGHT: 24'

THE DRAWINGS AND ALL OTHER INFORMATION CONTAINED HEREIN ARE THE CONFIDENTIAL AND PROPRIETARY PROPERTY OF OVERHEAD DOOR CORPORATION AND ITS AFFILIATED COMPANIES. THIS DRAWING AND INFORMATION, IN WHOLE OR IN PART, MAY NOT BE COPIED IN ANY MANNER OR DISCLOSED TO ANYONE WITHOUT THE PRIOR WRITTEN CONSENT OF OVERHEAD DOOR CORPORATION. NO DISCLOSURE OF ANY OF THIS DRAWING OR INFORMATION IS INTENDED TO OPERATE AS A LICENSE OR AUTHORIZATION TO USE IT FOR ANY PURPOSE WITHOUT THE SPECIFIC WRITTEN CONSENT OF OVERHEAD DOOR CORPORATION.																																																		
<table border="1"> <thead> <tr> <th>HOLE DIAMETER</th> <th>WHOLE NUMBERS</th> <th>FINISH</th> </tr> </thead> <tbody> <tr> <td>UNDER .251 +.004/- .003</td> <td>± .25</td> <td>N/A</td> </tr> <tr> <td>.251 TO .500 +.006/- .003</td> <td>.X ± .1</td> <td></td> </tr> <tr> <td>OVER .500 +.008/- .003</td> <td>.XX ± .03</td> <td></td> </tr> <tr> <td>FRACTIONS</td> <td>.XXX ± .010</td> <td></td> </tr> <tr> <td></td> <td>± 1/16</td> <td></td> </tr> <tr> <td></td> <td>ANGLES: ± .5°</td> <td></td> </tr> </tbody> </table>	HOLE DIAMETER	WHOLE NUMBERS	FINISH	UNDER .251 +.004/- .003	± .25	N/A	.251 TO .500 +.006/- .003	.X ± .1		OVER .500 +.008/- .003	.XX ± .03		FRACTIONS	.XXX ± .010			± 1/16			ANGLES: ± .5°		<table border="1"> <thead> <tr> <th>UNIT OF MEASURE</th> <th>FINISH</th> </tr> </thead> <tbody> <tr> <td>EA</td> <td>N/A</td> </tr> </tbody> </table>	UNIT OF MEASURE	FINISH	EA	N/A	<table border="1"> <thead> <tr> <th>DATE</th> <th>BY</th> <th>CHKD BY</th> <th>DATE</th> </tr> </thead> <tbody> <tr> <td>1/14/21</td> <td>T CLARK</td> <td>J QIAN</td> <td>1/8/21</td> </tr> <tr> <td>2/17/21</td> <td>T CLARK</td> <td></td> <td></td> </tr> </tbody> </table>	DATE	BY	CHKD BY	DATE	1/14/21	T CLARK	J QIAN	1/8/21	2/17/21	T CLARK			<table border="1"> <thead> <tr> <th>DRAWING TITLE</th> <th>DATE</th> </tr> </thead> <tbody> <tr> <td>WINDLOAD OPTION CODE 2046 SERIES 421/423/427/429/434/436, 316/-35.4 PSF, 16'-2" MAX</td> <td>1/14/21</td> </tr> <tr> <td>DRAWING NUMBER</td> <td>D- 411800</td> </tr> <tr> <td>SCALE</td> <td>N/A</td> </tr> <tr> <td>SHEET</td> <td>3 OF 3</td> </tr> </tbody> </table>	DRAWING TITLE	DATE	WINDLOAD OPTION CODE 2046 SERIES 421/423/427/429/434/436, 316/-35.4 PSF, 16'-2" MAX	1/14/21	DRAWING NUMBER	D- 411800	SCALE	N/A	SHEET	3 OF 3
HOLE DIAMETER	WHOLE NUMBERS	FINISH																																																
UNDER .251 +.004/- .003	± .25	N/A																																																
.251 TO .500 +.006/- .003	.X ± .1																																																	
OVER .500 +.008/- .003	.XX ± .03																																																	
FRACTIONS	.XXX ± .010																																																	
	± 1/16																																																	
	ANGLES: ± .5°																																																	
UNIT OF MEASURE	FINISH																																																	
EA	N/A																																																	
DATE	BY	CHKD BY	DATE																																															
1/14/21	T CLARK	J QIAN	1/8/21																																															
2/17/21	T CLARK																																																	
DRAWING TITLE	DATE																																																	
WINDLOAD OPTION CODE 2046 SERIES 421/423/427/429/434/436, 316/-35.4 PSF, 16'-2" MAX	1/14/21																																																	
DRAWING NUMBER	D- 411800																																																	
SCALE	N/A																																																	
SHEET	3 OF 3																																																	