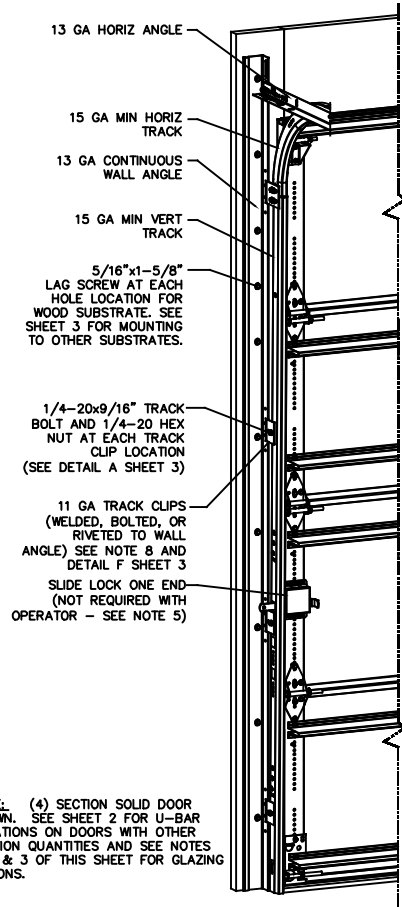


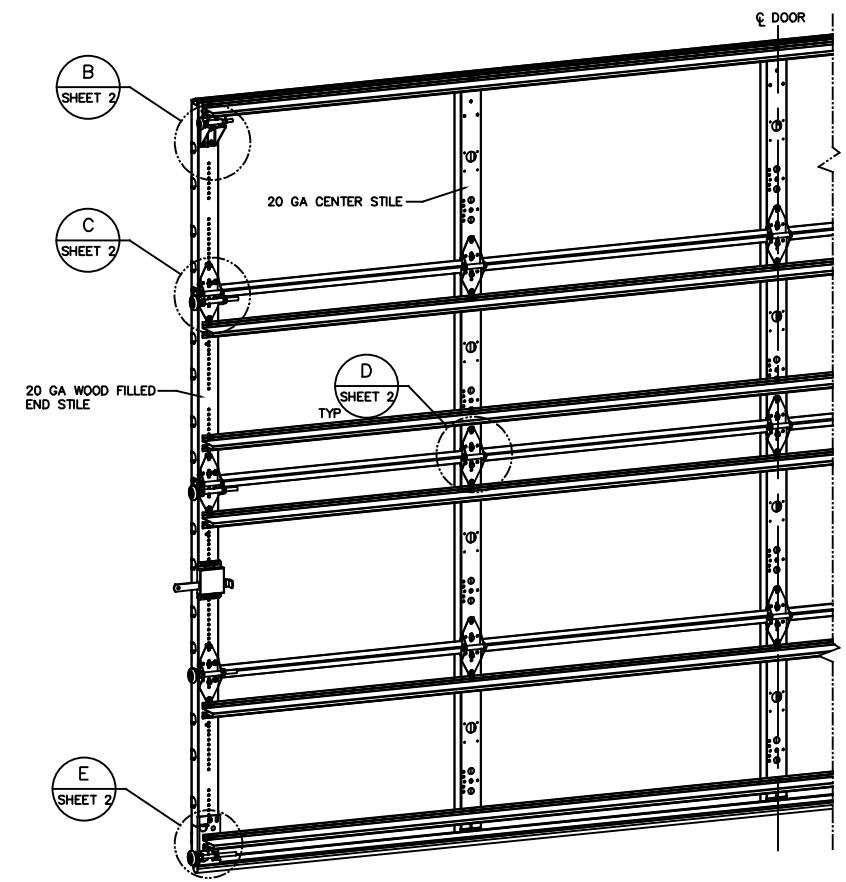
REVISIONS				
CR	REV	DESCRIPTION	DATE	APPROVAL
VL005	-	INITIAL DRAWING	1/14/2021	TLC
VL005	A	ADDED AFV PANEL SIZE	4/27/21	TLC

- NOTES
- NON-IMPACT RESISTANT OPTION - .125" MINIMUM DSB GLAZING MEETS UNIFORM STATIC DESIGN PRESSURES SHOWN ON THIS DRAWING. GLAZING SHALL HAVE A MAXIMUM HEIGHT OF 6.70" AND A MAXIMUM LENGTH OF 24.00". GLAZING IS NOT IMPACT RESISTANT AND DOES NOT MEET THE REQUIREMENTS FOR WIND-BORNE DEBRIS REGIONS.
 - IMPACT RESISTANT GLAZING OPTION - IMPACT RESISTANT GLAZING SYSTEM MAY BE INSTALLED IN INTERMEDIATE SECTIONS (WITH OR WITHOUT DECORATIVE INSERTS). GLAZING SHALL BE 1/4" POLYCARBONATE. MAXIMUM GLAZING DIMENSIONS SHALL BE 11" x 17", FASTENED WITH A MINIMUM #8 X 1" SMS, 3X ALONG THE HORIZONTAL AND 2X ALONG THE VERTICAL.
 - ALUMINUM FULL VIEW OPTION - ALUMINUM FULL VIEW SECTION MAY REPLACE ANY SECTION EXCEPT TOP AND BOTTOM PANELS. ALUMINUM FULL VIEW SECTION SHALL HAVE RAILS AND STILES OF EXTRUDED ALUMINUM ALLOY 6063-T6 AND .125" MINIMUM DSB GLAZING INSTALLED WITH ALUMINUM RETAINERS IN ORDER TO MEET UNIFORM STATIC DESIGN PRESSURES SHOWN ON THIS DRAWING. AFV PANEL SIZE IS 45.5"x21.9" (MAX). GLAZING IS NOT IMPACT RESISTANT AND DOES NOT MEET THE REQUIREMENTS FOR WIND-BORNE DEBRIS REGIONS.
 - MINIMUM OF 1" OVERLAP ON BOTH JAMBS REQUIRED TO MEET NEGATIVE DESIGN PRESSURES.
 - SLIDE LOCK OR OPERATOR REQUIRED.
 - SECTION STEEL TO HAVE THE FOLLOWING MINIMUM THICKNESS:
421, 423 - 20 GA
427, 429 - 24 GA
434, 436 - 25 GA
 - THE DESIGN OF THE SUPPORTING STRUCTURAL ELEMENTS SHALL BE THE RESPONSIBILITY OF THE PROFESSIONAL OF RECORD FOR THE BUILDING OR STRUCTURE AND IN ACCORDANCE WITH CURRENT BUILDING CODES FOR THE LOADS LISTED ON THIS DRAWING.
 - TRACK CLIPS SHALL BE LOCATED WITH CENTERLINE OF BOTTOM CLIP SPACED 10" MAX FROM BOTTOM OF TRACK AND REMAINING TRACK CLIPS SPACED AT 24" O.C. MAX. SPACING BETWEEN TOP TRACK CLIP AND SPLICE PLATE SHALL BE 30" O.C. MAX.
 - WHEN MOUNTING TO WOOD, DOOR JAMB TO BE MINIMUM 2x6 STRUCTURAL GRADE LUMBER. REFER TO JAMB CONNECTION SUPPLEMENT FOR ATTACHMENT TO SUPPORTING STRUCTURE.



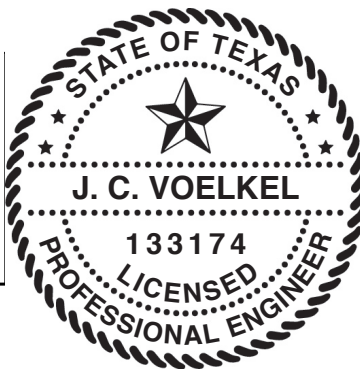
NOTE: (4) SECTION SOLID DOOR SHOWN. SEE SHEET 2 FOR U-BAR LOCATIONS ON DOORS WITH OTHER SECTION QUANTITIES AND SEE NOTES 1, 2 & 3 OF THIS SHEET FOR GLAZING OPTIONS.

SUPERIMPOSED DESIGN PRESSURE LOADS ON SUPPORTING STRUCTURE		
MAX DOOR WIDTH	DOOR HEIGHT	MAX UNIFORM LOAD EACH JAMB (PLF)
14'-2"	ALL	+143.1/-160.8



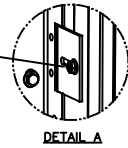
THE DOORS ARE DESIGNED AND MANUFACTURED TO COMPLY WITH THE 2018 IRC AND THE 2018 IBC.

STATIC PRESSURE RATINGS	APPROVED SIZES
DESIGN PRESSURE(PSF): +20.2/-22.7	MAX WIDTH: 14'-2"
	MAX HEIGHT: 24'-1"
IMPACT/CYCLIC RATED: YES	MAX SECTION HEIGHT: 24'



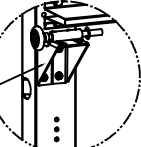
THE DRAWINGS AND ALL OTHER INFORMATION CONTAINED HEREIN ARE THE CONFIDENTIAL AND PROPRIETARY PROPERTY OF OVERHEAD DOOR CORPORATION AND ITS AFFILIATED COMPANIES. THIS DRAWING AND INFORMATION, IN WHOLE OR IN PART, MAY NOT BE COPIED IN ANY MANNER OR DISCLOSED TO ANYONE WITHOUT THE PRIOR WRITTEN CONSENT OF OVERHEAD DOOR CORPORATION. NO DISCLOSURE OF ANY OF THIS DRAWING OR INFORMATION IS INTENDED TO OPERATE AS A LICENSE OR AUTHORIZATION TO USE IT FOR ANY PURPOSE WITHOUT THE SPECIFIC WRITTEN CONSENT OF OVERHEAD DOOR CORPORATION.		FINISH: N/A		DATE: 1/14/21		DRAWING TITLE: WINDLOAD, OPTION CODE 2031	
MATERIAL: N/A		UNIT OF MEASURE: EA		CHECKED BY: J QIAN		SERIES 421/423/427/429/434/436, 40.2/-22.7 PSF, 14'-2" MAX	
REF DWG: USED ON:		APPROVED BY: T CLARK		DATE: 4/27/21		DRAWING NUMBER: D-411796	
						SHEET 1 OF 3	

1/4-20x9/16" TRACK BOLT AND 1/4-20 HEX NUT THROUGH THE SLOT IN THE TRACK AND TRACK CLIP



DETAIL A

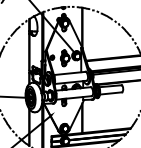
12 GA COMMERCIAL TOP FRAME BRACKET WITH 13 GA ROLLER CARRIER ATTACHED WITH (4) 1/4-14x7/8" SELF DRILLING CRIMPITITE SCREWS



DETAIL B

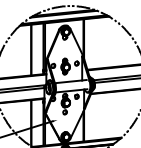
ADD (2) 1/4-14x7/8" SELF DRILLING CRIMPITITE SCREWS (INSIDE OF EACH INSIDE END HINGE)

2" STEEL ROLLER WITH 5-1/8" STEM AND 7/16" PUSHNUT AT EACH ROLLER LOCATION. 1/4" MAX BETWEEN PUSHNUT AND BRACKET OR HINGE

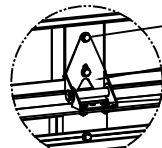


DETAIL C

13 GA WIDE BODY END HINGES EACH ATTACHED WITH (4) 1/4-14x7/8" SELF DRILLING CRIMPITITE SCREWS



SOLID SECTION



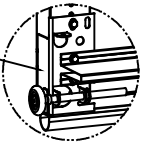
AFV SECTION

(2) 1/4-14x7/8" SELF DRILLING CRIMPITITE SCREWS

HALF HINGE

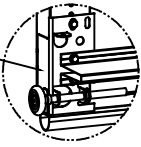
(2) 1/4 x 1/2" CARRIAGE BOLTS AND 1/4" FLANGE NUTS

14 GA WIDE BODY INTERMEDIATE HINGE ATTACHED WITH (4) 1/4-14x7/8" SELF DRILLING CRIMPITITE SCREWS



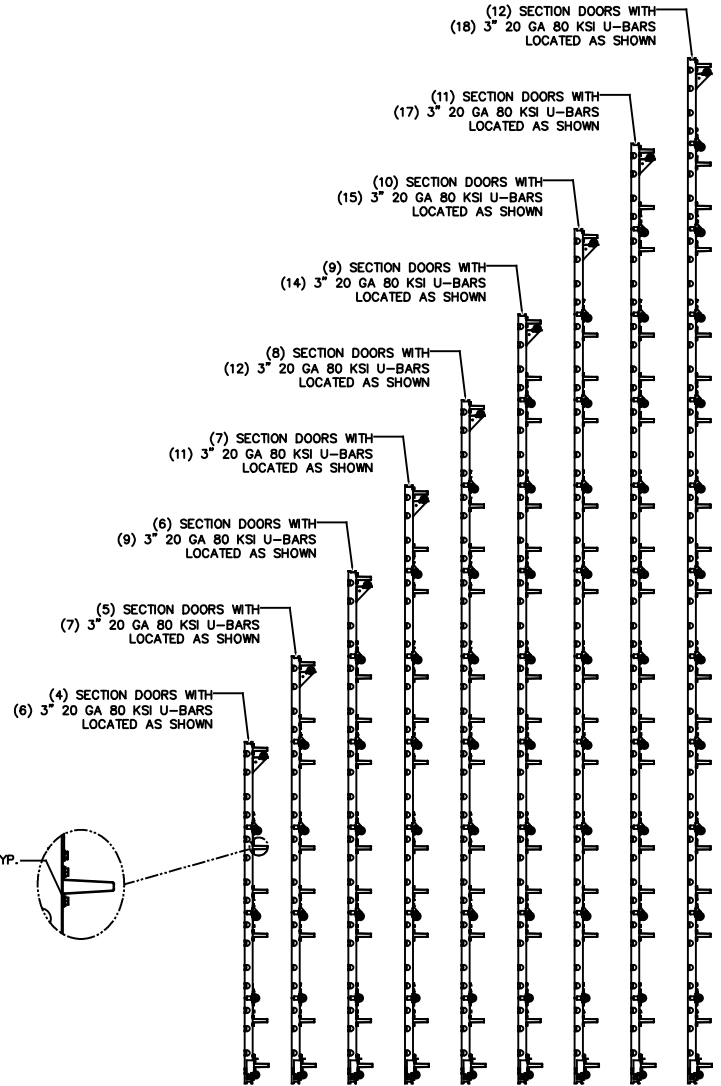
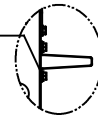
DETAIL D

12 GA BOTTOM BRACKET ATTACHED WITH (3) 1/4-14x7/8" SELF DRILLING CRIMPITITE SCREWS (2 THROUGH STRUT AND BRACKET)

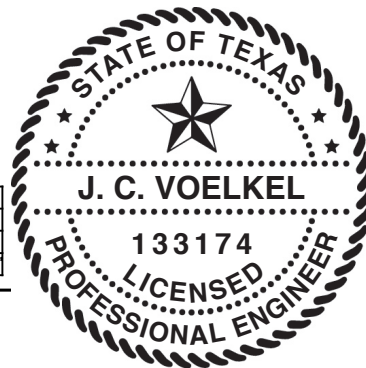


DETAIL E

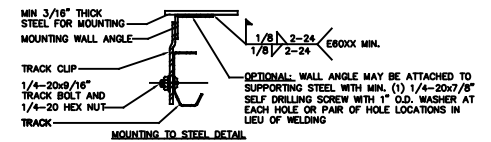
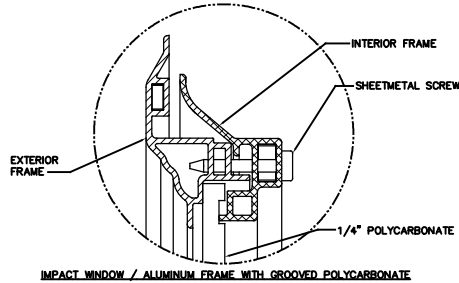
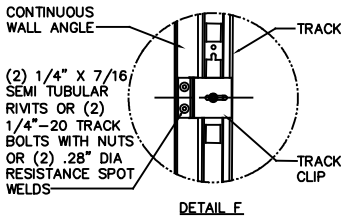
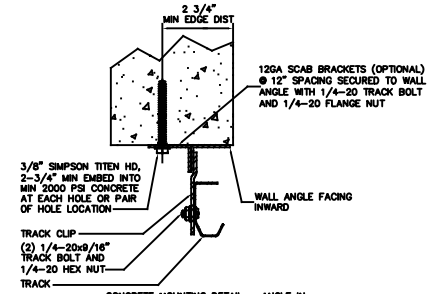
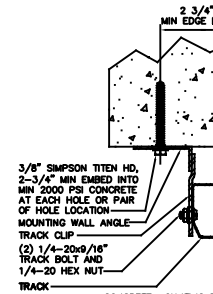
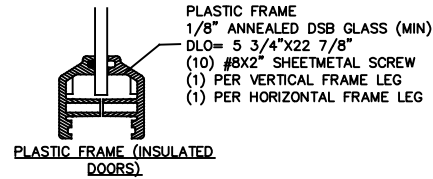
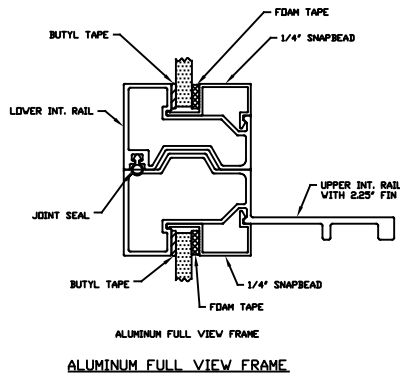
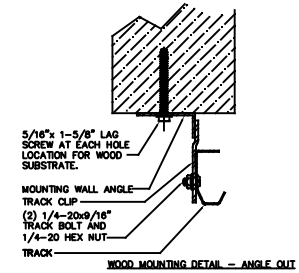
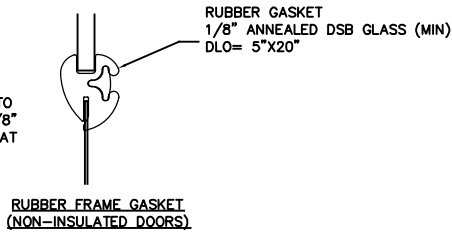
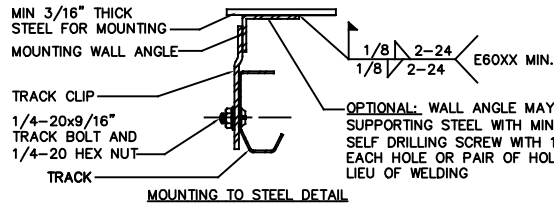
ATTACH U-BARS WITH (2) 1/4-14x7/8" SELF DRILLING CRIMPITITE SCREWS AT ALL STILE LOCATIONS, TYP.



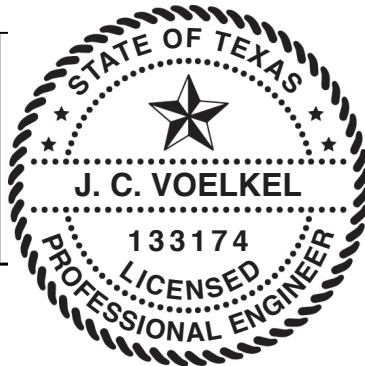
STATIC PRESSURE RATINGS	APPROVED SIZES
DESIGN PRESSURE(PSF): +20.2/-22.7	MAX WIDTH: 14'-2"
	MAX HEIGHT: 24'-1"
IMPACT/CYCLIC RATED: YES	MAX SECTION HEIGHT: 24'



THE DRAWINGS AND ALL OTHER INFORMATION CONTAINED HEREIN ARE THE CONFIDENTIAL AND PROPRIETARY PROPERTY OF OVERHEAD DOOR CORPORATION AND ITS AFFILIATED COMPANIES. THIS DRAWING AND INFORMATION, IN WHOLE OR IN PART, MAY NOT BE COPIED IN ANY MANNER OR DISCLOSED TO ANYONE WITHOUT THE PRIOR WRITTEN CONSENT OF OVERHEAD DOOR CORPORATION. NO DISCLOSURE OF ANY OF THIS DRAWING OR INFORMATION IS INTENDED TO OPERATE AS A LICENSE OR AUTHORIZATION TO USE IT FOR ANY PURPOSE WITHOUT THE SPECIFIC WRITTEN CONSENT OF OVERHEAD DOOR CORPORATION.			
	TITLE: OVERHEAD DOOR DATE: 1/14/21	FINISH: N/A UNIT OF MEASURE: EA	DRAWING TITLE: JINDI/DAD, OPTION CODE 2031 SERIES: 421/423/427/429/434/436 B.O.B./-E2.7 PSF, 14'-2" MAX
	DR. E. DIAMETER: UNDER .251 +.004/--.003 .251 TO .500 +.006/--.003 OVER .500 +.008/--.003	WHOLE NUMBERS: $\pm .25$.X: $\pm .1$.XX: $\pm .03$.XXX: $\pm .010$ ANGLES: $\pm .5^\circ$	MATERIAL: N/A
REF DWG: _____ USED ON: _____	TOLERANCES UNLESS OTHERWISE SPECIFIED: $\pm 1/16$	THE GENUINE, THE ORIGINAL: LEWISVILLE, TEXAS CHECKED BY: T. CLARK APPROVED BY: J. QIAN DATE: 1/8/21	DATE: 1/14/21 DATE: 1/8/21 DATE: 4/27/21 SCALE: N/A



STATIC PRESSURE RATINGS	APPROVED SIZES
DESIGN PRESSURE(PSF): +20.2/-22.7	MAX WIDTH: 14'-2"
IMPACT/CYCLIC RATED: YES	MAX HEIGHT: 24'-1"
	MAX SECTION HEIGHT: 24'



THE DRAWINGS AND ALL OTHER INFORMATION CONTAINED HEREIN ARE THE CONFIDENTIAL AND PROPRIETARY PROPERTY OF OVERHEAD DOOR CORPORATION AND ITS AFFILIATED COMPANIES. THIS DRAWING AND INFORMATION, IN WHOLE OR IN PART, MAY NOT BE COPIED IN ANY MANNER OR DISCLOSED TO ANYONE WITHOUT THE PRIOR WRITTEN CONSENT OF OVERHEAD DOOR CORPORATION. NO DISCLOSURE OF ANY OF THIS DRAWING OR INFORMATION IS INTENDED TO OPERATE AS A LICENSE OR AUTHORIZATION TO USE IT FOR ANY PURPOSE WITHOUT THE SPECIFIC WRITTEN CONSENT OF OVERHEAD DOOR CORPORATION.			
	HOLE DIAMETER UNDER .251 +.004/- .003 .251 TO .500 +.006/- .003 OVER .500 +.008/- .003	WHOLE NUMBERS: ± .25 X: ± .1 XX: ± .03 XXX: ± .010 ANGLES: ± .5°	FINISH: N/A UNIT OF MEASURE: EA
	TOLERANCES UNLESS OTHERWISE SPECIFIED DIMENSIONS ARE IN U.S. CUSTOMARY UNITS	MATERIAL: N/A	DATE: 1/14/21 DRAWN BY: T. CLARK CHECKED BY: J. QIAN APPROVED BY: T. CLARK