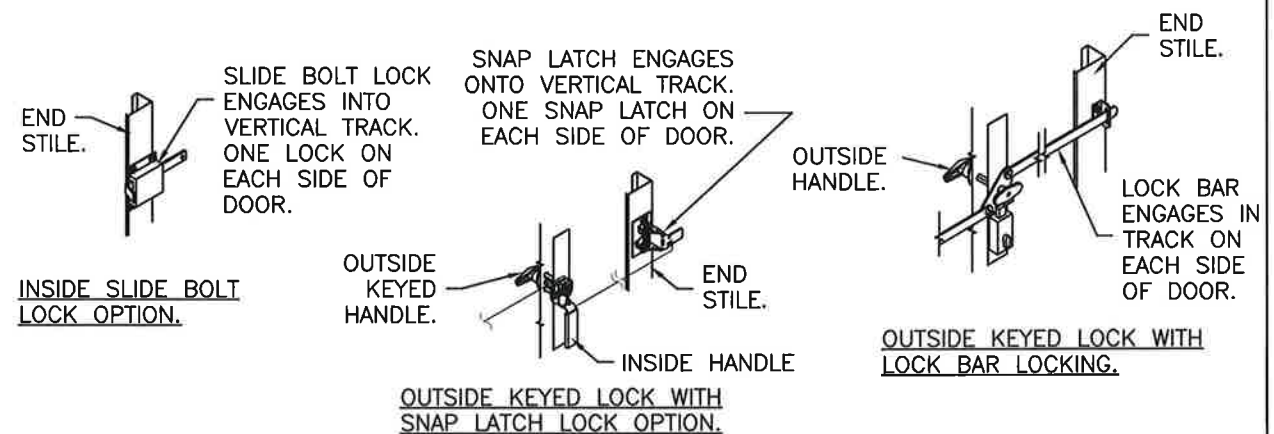
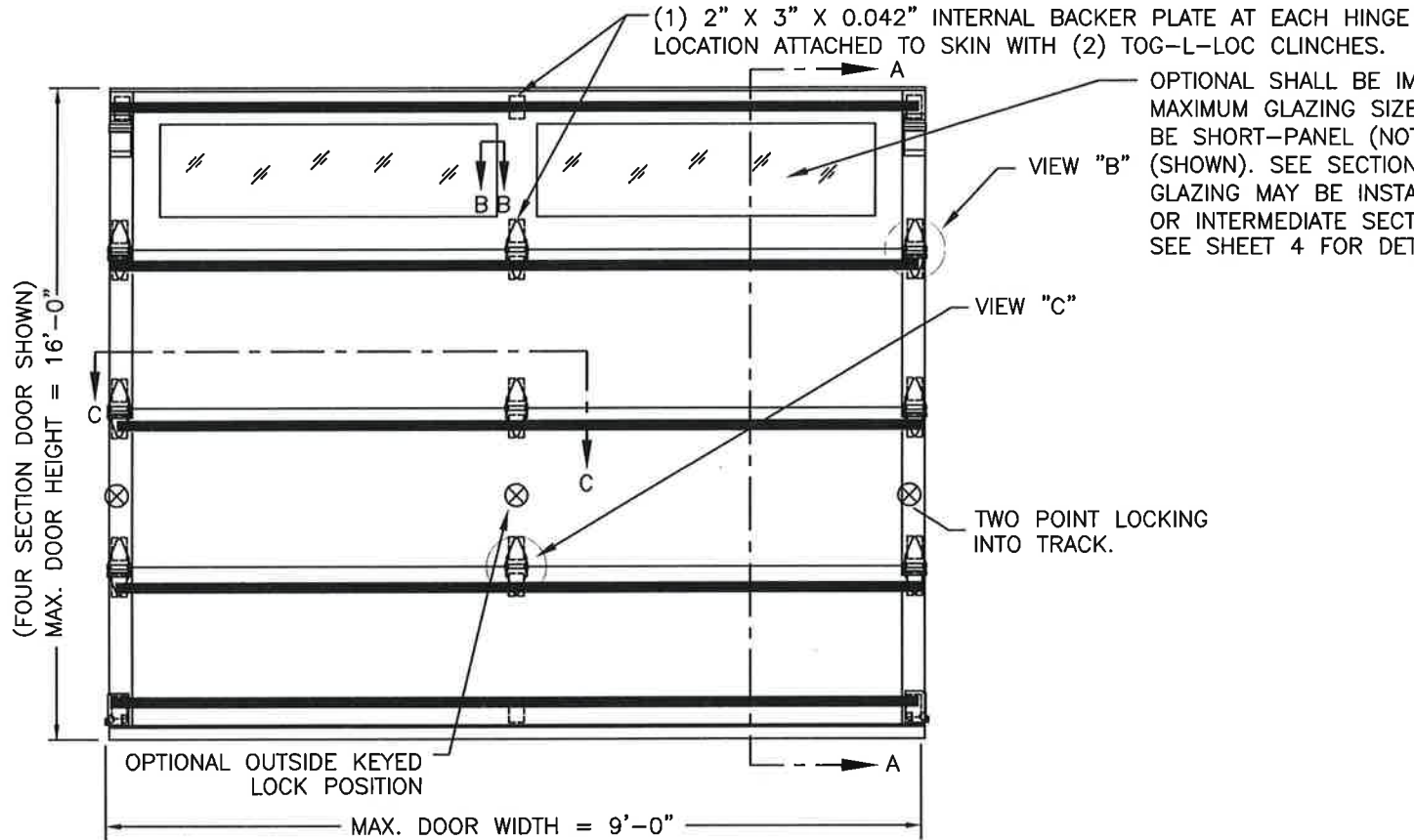


CLOPAY CANYON RIDGE SERIES: CAN2nn-XX. COACHMAN SERIES: CGUnn, CXUnn.  
 HOLMES GLENMOOR SERIES: GLN2nn-XX. SETTLERS SERIES: SXUnn.  
 IDEAL CARRIAGE HOUSE CUSTOM WOOD-LOOK SERIES: MWL2nn-XX. AFFINITY SERIES: AGUnn.  
**MODEL DESIGNATION NOTE 1:** "nn" REPRESENTS THE ARRANGEMENT OF THE DECORATIVE OVERLAYS.  
 COACHMAN-TYPE DOORS ARE 2-5/8" THICK.  
**MODEL DESIGNATION NOTE 2:** FOR CANYON-RIDGE-TYPE DOORS, "XX" REPRESENTS THE TYPE OF CLADDING. IF "XX" IS "MN" "PN" "CN" OR "NC" OR BLANK, THE DOOR HAS EITHER CLADDING OR OVERLAYS AND IS 2-1/2" THICK OVERALL. ANY OTHER VALUE FOR "XX" INDICATES THAT THE DOOR HAS CLADDING AND OVERLAYS ON THE 2" BASE DOUBLE-SKIN INSULATED DOOR AND IS 3" THICK OVERALL.

SHEET:  
1 OF 4

REVISIONS					
REV. NO.	ZONE:	DATE:	ECN NO.	APPVD:	DESCRIPTION
02	-	9/1/20	-	SH	UPDATED TITLE BLOCK AND ADDED IBC/IRC COMPLIANCE STATEMENT



DOOR WIDTH	# OF INTERM. HINGES/JOINT
6'2" TO 7'6"	2
7'8" TO 9'0"	1

DOOR HEIGHT	# OF SECTIONS	# OF U-BARS
UP TO 6'0"	3	4
6'3" TO 8'0"	4	5
8'3" TO 10'0"	5	6
10'3" TO 12'0"	6	7
12'3" TO 14'0"	7	8
14'3" TO 16'0"	8	9

MAX SECTION HEIGHT: 24"



DESIGN ENGINEER:  
 MARK WESTERFIELD, P.E.  
 FLORIDA P.E. #48495, NC P.E. #23832, TEXAS P.E. #91513

THIS PRODUCT COMPLIES WITH THE 2018 IBC/IRC.

DESIGN LOADS: +38.0 P.S.F. & -44.0 P.S.F.  
 TEST LOADS: +57.0 P.S.F. & -66.0 P.S.F.

MANUFACTURING PRODUCT CODE  
 COACHMAN: DSIUD-1M479  
 CANYON RIDGE: DSIUD-1K479  
 PART NO.: N/A

Unless Stated Otherwise  
 TOLERANCES are  
 .0 = ±.031  
 .00 = ±.015  
 .000 = ±.005  
 .0000 = ±.001  
 Degrees = ±1/2'  
 Unless Stated Otherwise  
 DIMENSIONS ARE IN INCHES.

**Clopay** CORPORATION  
 8585 Duke Boulevard  
 Mason, OH 45040 USA  
 Tel. No. 513-770-4800  
 Fax No. 513-770-4853

DESCRIPTION: CANYON RIDGE / COACHMAN INTELICORE W6 SC  
 DRAWN BY: SH DATE: 7/17/14  
 CHECKED BY: -- DATE: --  
 DWG. NO.: 104948

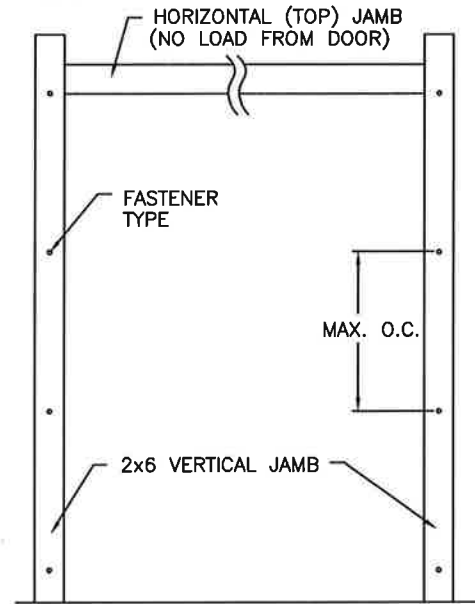
WINDLOAD RATING  
**W6 DP38**

SCALE: NTS  
 SHEET 1 OF 4  
 VER: TDI

CLOPAY CANYON RIDGE SERIES: CAN2nn-XX. COACHMAN SERIES: CGUnn, CXUnn.  
 HOLMES GLENMOOR SERIES: GLN2nn-XX. SETTLERS SERIES: SXUnn.  
 IDEAL CARRIAGE HOUSE CUSTOM WOOD-LOOK SERIES: MWL2nn-XX. AFFINITY SERIES: AGUnn.  
**MODEL DESIGNATION NOTE 1:** "nn" REPRESENTS THE ARRANGEMENT OF THE DECORATIVE OVERLAYS.  
 COACHMAN-TYPE DOORS ARE 2-5/8" THICK.  
**MODEL DESIGNATION NOTE 2:** FOR CANYON-RIDGE-TYPE DOORS, "xx" REPRESENTS THE TYPE OF CLADDING. IF "xx" IS "MN" "PN" "CN" OR "NC" OR BLANK, THE DOOR HAS EITHER CLADDING OR OVERLAYS AND IS 2-1/2" THICK OVERALL. ANY OTHER VALUE FOR "xx" INDICATES THAT THE DOOR HAS CLADDING AND OVERLAYS ON THE 2" BASE DOUBLE-SKIN INSULATED DOOR AND IS 3" THICK OVERALL.

SHEET:  
2 OF 4

REVISIONS					
REV. NO.	ZONE:	DATE:	ECN NO.	APPVD:	DESCRIPTION
02	-	-	-	-	SEE REVISION HISTORY ON SHEET ONE.



**JAMB TO SUPPORTING STRUCTURE ATTACHMENT**

- NOTES:**
1. ALL THE LOAD FROM THE DOOR IS TRANSFERRED TO THE TRACK AND THEN FROM THE TRACK TO THE 2x6 VERTICAL SYP (GRADE #2 OR BETTER) JAMBS. NO LOAD FROM THE DOOR IS TRANSFERRED TO THE HORIZONTAL (TOP) JAMB.
  2. EACH VERTICAL JAMB SEES A MAXIMUM DESIGN LOAD OF +171 LB & -198 LB. PER LINEAR FOOT OF JAMB.
  3. ALL JAMB FASTENERS MAY BE (BUT ARE NOT REQUIRED TO BE) COUNTERSUNK TO PROVIDE A FLUSH MOUNTING SURFACE.
  4. A 1/3 STRESS INCREASE FOR WIND LOAD WAS NOT USED IN THE CALCULATION OF ALLOWABLE LOADS FOR ANCHORS AND FASTENERS FOR STEEL, CONCRETE AND MASONRY.

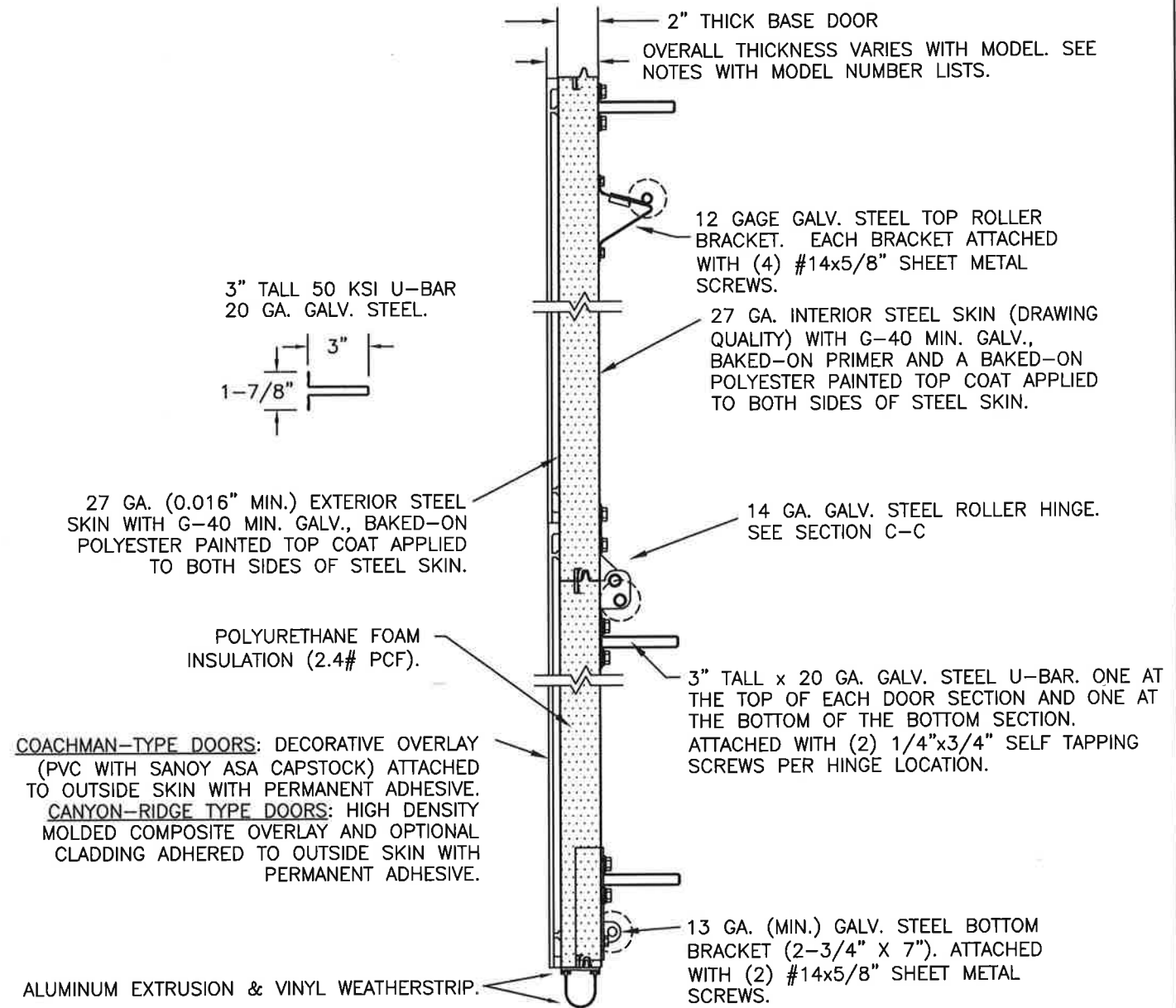
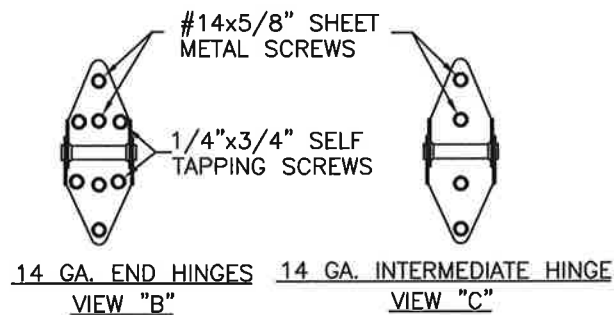
**PREPARATION OF JAMBS BY OTHERS**

**NOTE:** THE DESIGN OF THE SUPPORTING STRUCTURAL ELEMENTS SHALL BE THE RESPONSIBILITY OF THE PROFESSIONAL OF RECORD FOR THE BUILDING OR STRUCTURE AND IN ACCORDANCE WITH CURRENT BUILDING CODES FOR THE LOADS LISTED ON THIS DRAWING.

**2x6 JAMB TO SUPPORTING STRUCTURE ATTACHMENT**  
 (NOT TO BE USED FOR ATTACHMENT OF TRACK ANGLE TO 2x6 VERTICAL JAMBS OR SUPPORTING STRUCTURE)

BUILDING TYPE	FASTENER TYPE	MAXIMUM ON-CENTER DISTANCE BETWEEN FASTENERS*	STEEL WASHERS REQUIRED
HOLLOW CMU BLOCK WALL	1/4" x 1-1/4" MIN. EMBED ULTRACON CONCRETE ANCHOR	9 3/4"	1" O.D.
GROUT-FILLED CMU BLOCK	1/4" x 1-1/4" MIN. EMBED ULTRACON CONCRETE ANCHOR	16"	1" O.D.
2000 PSI MIN. CONCRETE	1/4" x 1" MIN. EMBED ULTRACON CONCRETE ANCHOR	14"	1" O.D.
2000 PSI MIN. CONCRETE	1/4" x 1" MIN. EMBED TAPCON CONCRETE ANCHOR	13"	1" O.D.
2000 PSI MIN. CONCRETE	3/8" X 1-3/4" MIN. EMBED WEJ-IT ANKR TITE SLEEVE ANCHOR	24"	INCLUDED
4000 PSI MIN. CONCRETE	3/8" X 1-3/4" MIN. EMBED WEJ-IT ANKR TITE SLEEVE ANCHOR	24"	INCLUDED
WOOD FRAME (SYP 0.55 SG)	1/2" x 3" LAG SCREW (ASTM A307, GRADE A) 1-5/8" EMBED INTO STRUCTURE	24"	1" O.D.

\* FIRST (BOTTOM) ANCHOR STARTING AT NO MORE THAN HALF OF THE MAXIMUM ON-CENTER DISTANCE. HIGHEST ANCHOR INSTALLED AT LEAST AS HIGH AS THE DOOR OPENING.  
 CLOPAY DOES NOT SUPPLY JAMB ATTACHMENT FASTENERS.  
 MINIMUM DISTANCE BETWEEN CENTER OF ANCHOR AND EDGE OF CONCRETE BLOCK: 2-1/2", EXCLUDING STUCCO THICKNESS.



**SECTION A-A (SIDE VIEW)**



DESIGN ENGINEER  
 MARK WESTERFIELD, P.E.  
 FLORIDA P.E. #48495, NC P.E. #23832, TEXAS P.E. #91513

DESIGN LOADS: +38.0 P.S.F. & -44.0 P.S.F.  
 TEST LOADS: +57.0 P.S.F. & -66.0 P.S.F.

Unless Stated Otherwise  
**TOLERANCES** are  
 .0 = ±.031  
 .00 = ±.015  
 .000 = ±.005  
 .0000 = ±.001  
 Degrees = ± 1/2"  
 Unless Stated Otherwise  
 DIMENSIONS ARE IN INCHES.

**Clopay** CORPORATION  
 8585 Duke Boulevard  
 Mason, OH 45040 USA  
 Tel. No. 513-770-4800  
 Fax No. 513-770-4853

DESCRIPTION: CANYON RIDGE / COACHMAN INTELICORE W6 SC		WINDLOAD RATING <b>W6 DP38</b>	
DRAWN BY: SH	DATE: 7/17/14	SCALE: NTS	DWG. SIZE <b>B</b>
CHECKED BY: --	DATE: --	SHEET 2 OF 4	VER: TDI
DWG. NO.: 104948			

MANUFACTURING PRODUCT CODE  
 COACHMAN: DSIUD-1M479  
 CANYON RIDGE: DSIUD-1K479  
 PART NO.: N/A

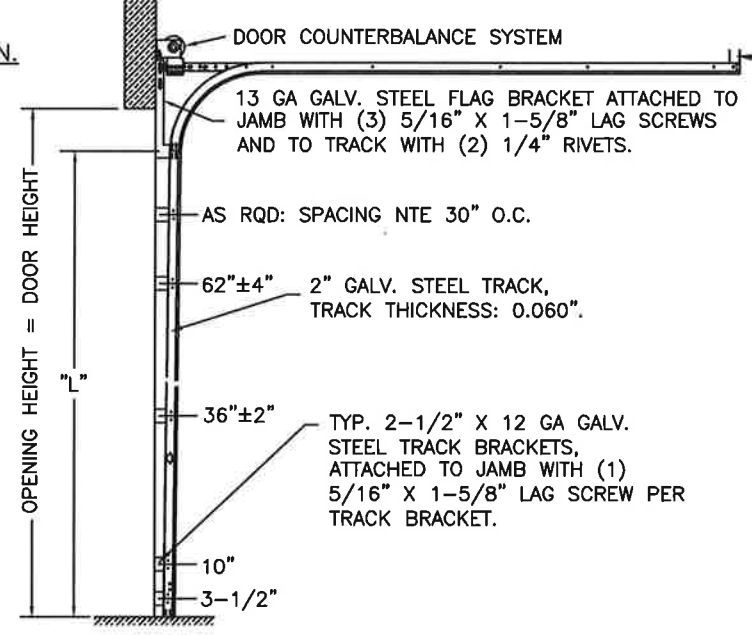


CLOPAY CANYON RIDGE SERIES: CAN2nn-XX. COACHMAN SERIES: CGUnn, CXUnn.  
 HOLMES GLENMOOR SERIES: GLN2nn-XX. SETTLERS SERIES: SXUnn.  
 IDEAL CARRIAGE HOUSE CUSTOM WOOD-LOOK SERIES: MWL2nn-XX. AFFINITY SERIES: AGUnn.  
**MODEL DESIGNATION NOTE 1:** "nn" REPRESENTS THE ARRANGEMENT OF THE DECORATIVE OVERLAYS.  
 COACHMAN-TYPE DOORS ARE 2-5/8" THICK.  
**MODEL DESIGNATION NOTE 2:** FOR CANYON-RIDGE-TYPE DOORS, "XX" REPRESENTS THE TYPE OF CLADDING. IF "XX" IS "MN" "PN" "CN" OR "NC" OR BLANK, THE DOOR HAS EITHER CLADDING OR OVERLAYS AND IS 2-1/2" THICK OVERALL. ANY OTHER VALUE FOR "XX" INDICATES THAT THE DOOR HAS CLADDING AND OVERLAYS ON THE 2" BASE DOUBLE-SKIN INSULATED DOOR AND IS 3" THICK OVERALL.

SHEET:  
3 OF 4

REVISIONS					
REV. NO.	ZONE	DATE	ECN NO.	APPVD:	DESCRIPTION
02	-	-	-	-	SEE REVISION HISTORY ON SHEET ONE.

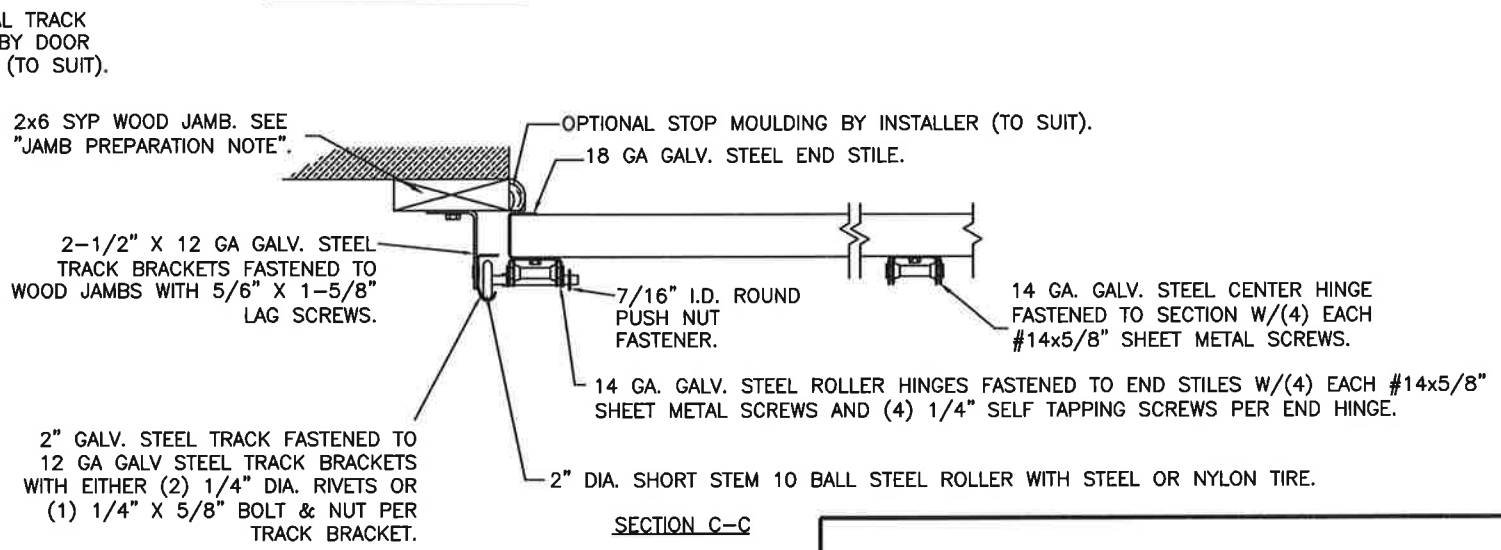
**2" TRACK CONFIGURATION.**



DOOR HEIGHT	"L"
6'-6"	70"
7'-0"	76"
7'-6"	82"
8'-0"	88"
8'-6"	94"
9'-0"	100"
9'-6"	106"
10'-0"	112"
10'-6"	118"
11'-0"	124"
11'-6"	130"
12'-0"	136"
12'-6"	142"
13'-0"	148"
13'-6"	154"
14'-0"	160"
14'-6"	166"
15'-0"	172"
15'-6"	178"
16'-0"	184"

NOTE: TRACK CONFIGURATION ABOVE THE DOOR OPENING DOES NOT AFFECT THE WIND LOAD RATING OF THIS DOOR.

**JAMB CONFIGURATION.**



HORIZONTAL TRACK SUPPORT BY DOOR INSTALLER (TO SUIT).

2x6 SYP WOOD JAMB. SEE "JAMB PREPARATION NOTE".

2-1/2" X 12 GA GALV. STEEL TRACK BRACKETS FASTENED TO WOOD JAMBS WITH 5/8" X 1-5/8" LAG SCREWS.

2" GALV. STEEL TRACK FASTENED TO 12 GA GALV STEEL TRACK BRACKETS WITH EITHER (2) 1/4" DIA. RIVETS OR (1) 1/4" X 5/8" BOLT & NUT PER TRACK BRACKET.

OPTIONAL STOP MOULDING BY INSTALLER (TO SUIT).  
18 GA GALV. STEEL END STILE.

7/16" I.D. ROUND PUSH NUT FASTENER.

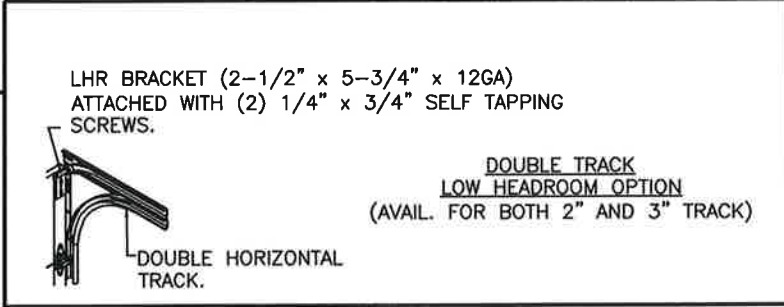
14 GA. GALV. STEEL CENTER HINGE FASTENED TO SECTION W/(4) EACH #14x5/8" SHEET METAL SCREWS.

14 GA. GALV. STEEL ROLLER HINGES FASTENED TO END STILES W/(4) EACH #14x5/8" SHEET METAL SCREWS AND (4) 1/4" SELF TAPPING SCREWS PER END HINGE.

2" DIA. SHORT STEM 10 BALL STEEL ROLLER WITH STEEL OR NYLON TIRE.

**SECTION C-C**

**PREPARATION OF JAMBS BY OTHERS.**



3" TRACK IS ALSO AVAILABLE.



DESIGN ENGINEER:  
MARK WESTERFIELD, P.E.  
FLORIDA P.E. #48495, NC P.E. #23832, TEXAS P.E. #91513

DESIGN LOADS: +38.0 P.S.F. & -44.0 P.S.F.  
TEST LOADS: +57.0 P.S.F. & -66.0 P.S.F.

Unless Stated Otherwise TOLERANCES are

.0	= ±.031
.00	= ±.015
.000	= ±.005
.0000	= ±.001
Degrees	= ±1/2'

Unless Stated Otherwise DIMENSIONS ARE IN INCHES.

**Glopay CORPORATION**  
8585 Duke Boulevard  
Mason, OH 45040 USA  
Tel. No. 513-770-4800  
Fax No. 513-770-4853

MANUFACTURING PRODUCT CODE COACHMAN: DSIUD-1M479 CANYON RIDGE: DSIUD-1K479	
PART NO.: N/A	
WINDLOAD RATING <b>W6 DP38</b>	
DESCRIPTION: CANYON RIDGE / COACHMAN INTELICORE W6 SC	
DRAWN BY: SH	DATE: 7/17/14
CHECKED BY: --	DATE: --
DWG. NO.: 104948	VER: TDI
SCALE: NTS	DWG. SIZE <b>B</b>
SHEET 3 OF 4	

4

3

2

1

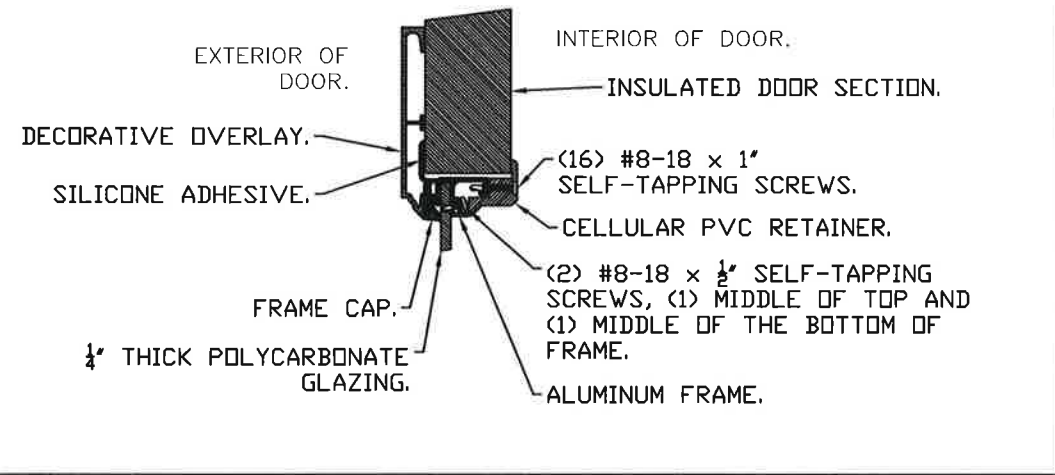
CLOPAY CANYON RIDGE SERIES: CAN2nn-XX. COACHMAN SERIES: CGUnn, CXUnn.  
 HOLMES GLENMOOR SERIES: GLN2nn-XX. SETTLERS SERIES: SXUnn.  
 IDEAL CARRIAGE HOUSE CUSTOM WOOD-LOOK SERIES: MWL2nn-XX. AFFINITY SERIES: AGUnn.  
**MODEL DESIGNATION NOTE 1:** "nn" REPRESENTS THE ARRANGEMENT OF THE DECORATIVE OVERLAYS.  
 COACHMAN-TYPE DOORS ARE 2-5/8" THICK.  
**MODEL DESIGNATION NOTE 2:** FOR CANYON-RIDGE-TYPE DOORS, "XX" REPRESENTS THE TYPE OF CLADDING. IF "XX" IS "MN" "PN" "CN" OR "NC" OR BLANK, THE DOOR HAS EITHER CLADDING OR OVERLAYS AND IS 2-1/2" THICK OVERALL. ANY OTHER VALUE FOR "XX" INDICATES THAT THE DOOR HAS CLADDING AND OVERLAYS ON THE 2" BASE DOUBLE-SKIN INSULATED DOOR AND IS 3" THICK OVERALL.

SHEET:  
4 OF 4

REVISIONS					
REV. NO.	ZONE:	DATE:	ECN NO.	APPVD:	DESCRIPTION
02	-	-	-	-	SEE REVISION HISTORY ON SHEET ONE.

**IMPACT-RESISTANT CONSTRUCTION:**  
 SOLID DOORS (NO GLAZING) OR DOORS WITH OPTIONAL IMPACT-RESISTANT GLAZING ARE IMPACT-RESISTANT. OPTIONAL IMPACT RESISTANT ASSEMBLY CONSISTS OF ALUMINUM FRONT FRAME AND SABIC IP LEXAN 9034 (VERSIONS ALSO APPROVED: MR10, 9030, 90318, 90316, 90317, 90311, 90314, 90355) OR BAYER MAKROLON GP (VERSIONS ALSO APPROVED: SL, AR, 15), APPROVED CC1 PLASTICS IN ACCORDANCE WITH IBC/FBC 2606 AND APPROVED C1 PLASTICS IN ACCORDANCE WITH FBC 2612.  
 THE ENTIRE DOOR ASSEMBLY INSTALLED IN COMPLIANCE WITH THIS SECTION MEETS THE WIND LOAD REQUIREMENTS OF THE FLORIDA BUILDING CODE AND INTERNATIONAL BUILDING CODE AND IS LARGE- AND SMALL- MISSILE IMPACT RESISTANT.

SECTION B-B (IMPACT-RESISTANT GLAZING OPTION)



DESIGN ENGINEER:  
 MARK WESTERFIELD, P.E.  
 FLORIDA P.E. #48495, NC P.E. #23832, TEXAS P.E. #91513

DESIGN LOADS: +38.0 P.S.F. & -44.0 P.S.F.  
 TEST LOADS: +57.0 P.S.F. & -66.0 P.S.F.

Unless Stated Otherwise  
**TOLERANCES** are

.0	= ±.031
.00	= ±.015
.000	= ±.005
.0000	= ±.001
Degrees	= ±1/2°

Unless Stated Otherwise  
 DIMENSIONS ARE IN INCHES.

**Glopay** CORPORATION  
 8585 Duke Boulevard  
 Mason, OH 45040 USA  
 Tel. No. 513-770-4800  
 Fax No. 513-770-4853

DESCRIPTION: CANYON RIDGE / COACHMAN INTELICORE W6 SC  
 DRAWN BY: SH DATE: 7/17/14  
 CHECKED BY: -- DATE: --  
 DWG. NO.: 104948

MANUFACTURING PRODUCT CODE COACHMAN: DSIUD-1M479 CANYON RIDGE: DSIUD-1K479	
PART NO.: N/A	
WINDLOAD RATING <b>W6 DP38</b>	
SCALE: NTS	DWG. SIZE <b>B</b>
SHEET 4 OF 4	
VER: TDI	

4

3

2

1