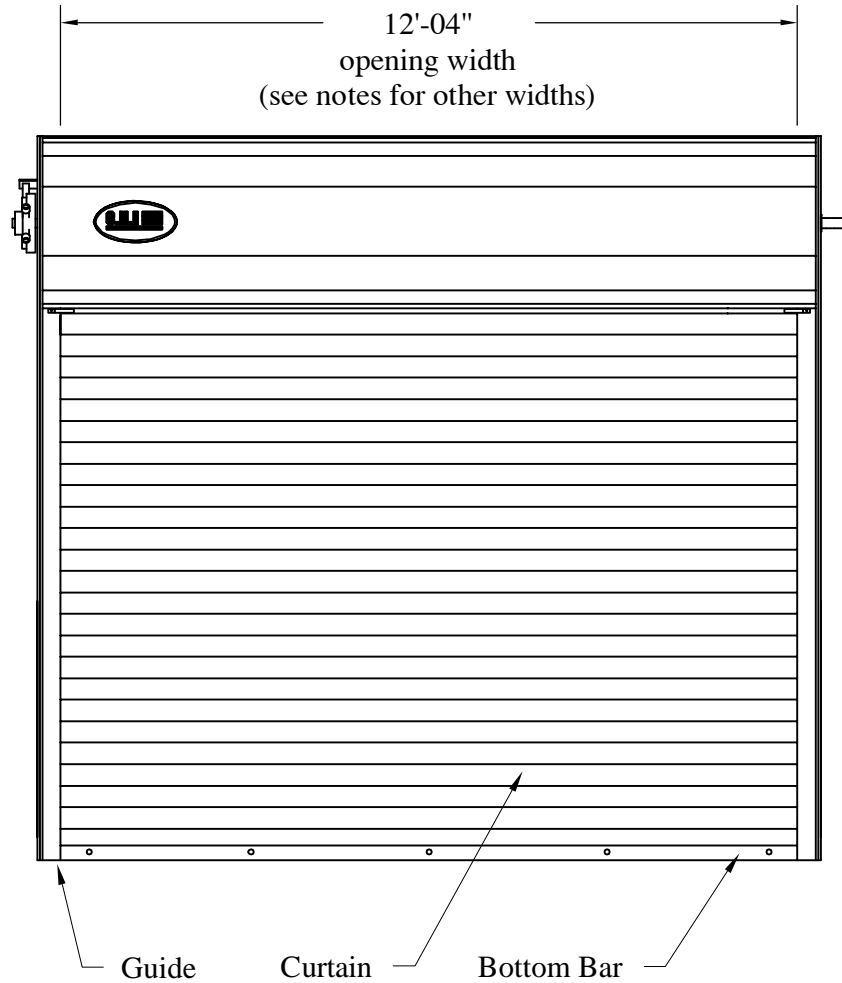



This door has been evaluated in accordance with ASTM E 330-02 and ANSI/DASMA 108-02 and 108-05. Per ASCE 7-05, Design Pressures (DP) +30.0/-36.8psf typically meet or exceed 145mph exposure "B" requirements for 12'-04" x 8' doors.



John E. Scates, P.E.  
3121 Fairgate Drive  
Carrollton, Texas 75007  
TXPE 56308, F-2203

|  |                             |
|--|-----------------------------|
| <br><small>ROLLING STEEL DOORS</small><br><small>1485 Sunrise Drive, Arthur, IL 61911</small> | Date: 8-31-2015             |
|  | Models:<br>6202, 6222, 6242 |
| 12'-04" wide +30.0/-36.8psf  |                             |
| C.H.I. Drawing: TZ6n-12-R1002  |                             |

Maximum door height: 24'-0"

Guide Details

**1. Jamb Material:**

Steel (3/16" thick, A500 Structural) or  
Concrete (2000psi, minimum) or  
Filled CMU (2000psi, minimum)

**2. Wall Angle:** (A36 Structural Steel Angle)

a. 3" x 3" x 3/16"

"E" Guide Configuration For Steel Jamb.

b. 3" x 3" x 3/16"

"Z" Guide Configuration For concrete Jamb.

**3. Jamb Fastener:** (Quantity Shown On Page 3)

a. Steel: 3/8"-16 x 1" Self Tapping Bolt (ASME B18.6.3)

b. Welding of Guides: 3/16" Fillet Weld  
Perimeter of Slot Utilizing an E60 Electrode.  
Slot Quantity Same as Steel.

c. Simpson Strong-Tie (Concrete) or Hilti (Filled CMU):  
3/8"x4" Simpson Strong-Tie Titen HD (concrete) or  
5/8"x5" (4" embedment) Hilti KWIK BOLT 3 (Filled CMU) or  
3/8"x3.75" (2.5" embedment) Hilti KWIK BOLT 3 (Filled CMU)

d. Through Bolt (Concrete or Filled CMU):  
3/8"-16 Bolt or Rod (minimum 115,000 psi), Nut, and .75"OD flat washers,  
with Square crush plate: 2.5"x2.5"x0.25" thick (A36 steel or better)

**4. Guide to Guide Fastener :**

3/8"-16 x 1-1/4" Grade 2 Carriage Bolt  
with Steel Serrated-Flange Hex Locknut 3/8"-16  
not to exceed 24" on centers.

**5. Back Angle:** (A36 Structural Steel Angle)

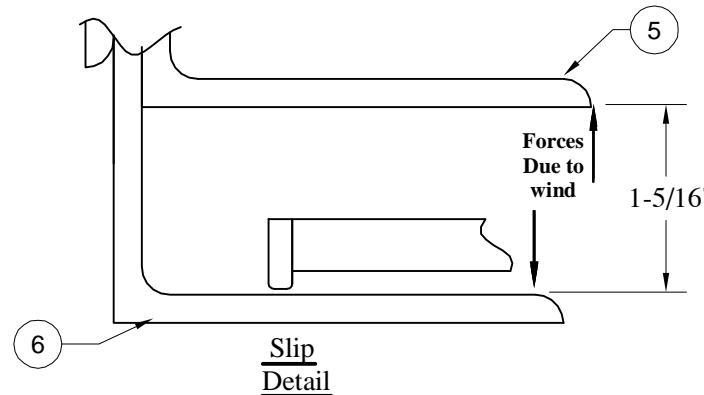
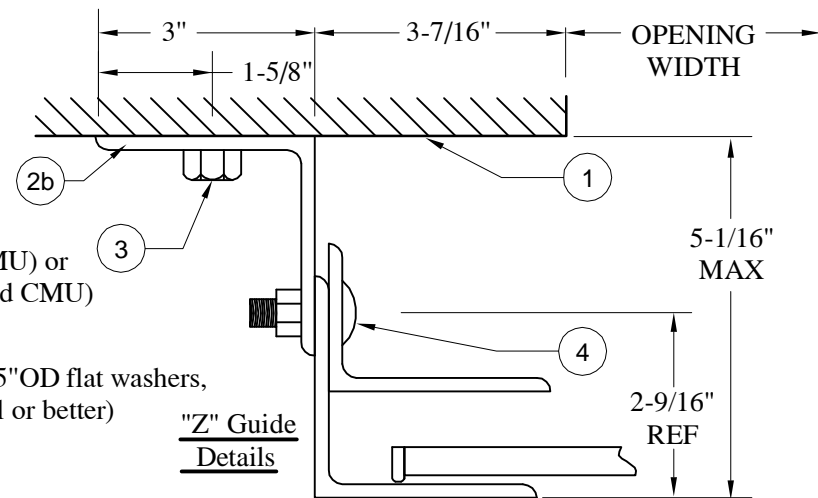
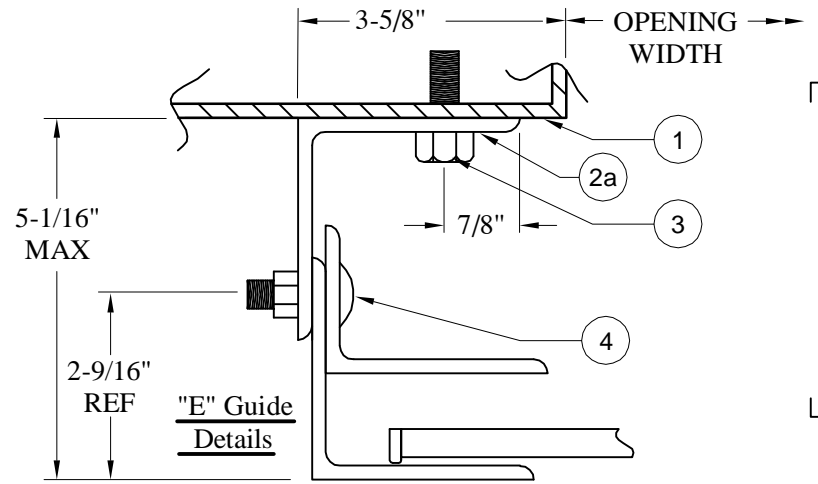
2" x 3" x 3/16"

**6. Face Angle:** (A36 Structural Steel Angle)

3" x 3" x 3/16"


**7. Slat Cut-Length:**

Slat Length = Opening Width plus 4-3/4"

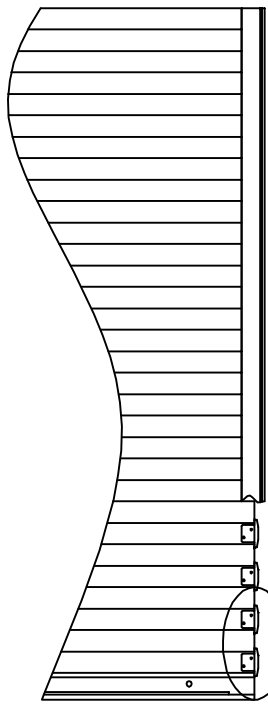


John E. Scates, P.E.  
3121 Fairgate Drive  
Carrollton, Texas 75007  
TXPE 56308, F-2203

The jambs must be designed (by others) to withstand direct forces due to wind (width x psf/2) on this door. Forces are in units of "pounds per foot tall". Direct forces due to wind occur in both (+) and (-) directions.

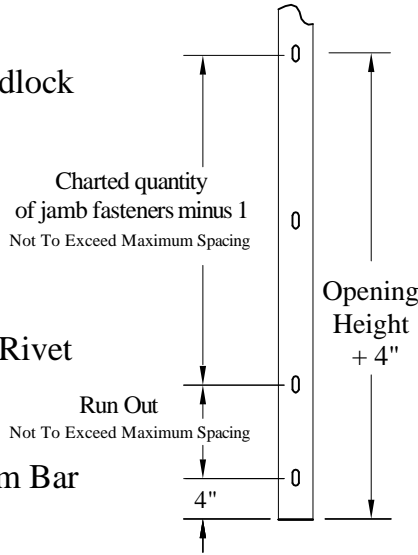
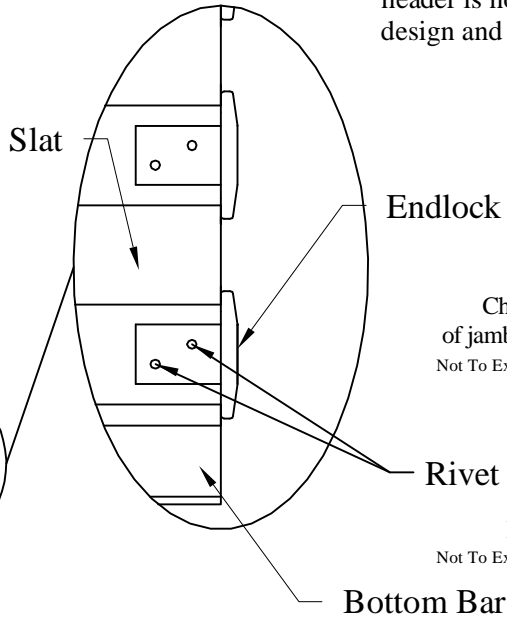
|  |                          |
|--|--------------------------|
| <br><small>ROLLING STEEL DOORS</small><br><small>1485 Sunrise Drive, Arthur, IL 61911</small> | Date: 8-31-2015          |
|  | Models: 6202, 6222, 6242 |
| 12'-04" wide +30.0/-36.8psf  |                          |
| C.H.I. Drawing: TZ6n-12-R1002  |                          |

Professional Engineer's seal provided only for verification of windload construction details



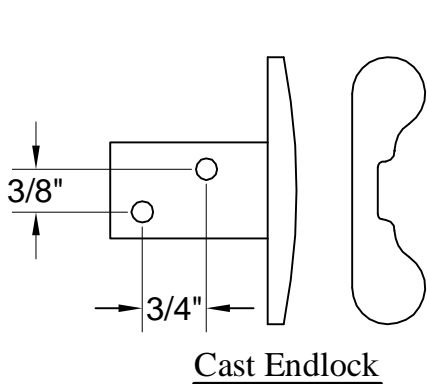
Rivet Diameter: 1/4"  
 Rivet Body: Steel  
 Rivet Mandrel: Steel  
Rivet

**Note:**  
 Construction of the door above the header is not part of the windload design and not detailed on this drawing.

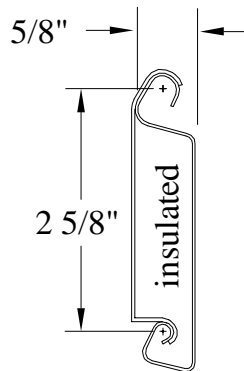


| Opening Height        | Quantity of Jamb Fasteners |              |                          |                             |                             |
|-----------------------|----------------------------|--------------|--------------------------|-----------------------------|-----------------------------|
|                       | steel                      | bolt through | 2000psi concrete Simpson | 2000psi filledCMU 5/8 Hilti | 2000psi filledCMU 3/8 Hilti |
| 8'-0"                 | 3                          | 5            | 5                        | 8                           | 13                          |
| 9'-0"                 | 4                          | 5            | 6                        | 9                           | 15                          |
| 10'-0"                | 4                          | 5            | 7                        | 10                          | 16                          |
| 11'-0"                | 4                          | 6            | 7                        | 11                          | 18                          |
| 12'-0"                | 4                          | 6            | 8                        | 12                          | 19                          |
| 13'-0"                | 5                          | 7            | 8                        | 13                          | 22                          |
| 14'-0"                | 5                          | 7            | 9                        | 14                          | 24                          |
| 15'-0"                | 5                          | 7            | 9                        | 15                          | 25                          |
| 16'-0"                | 5                          | 8            | 10                       | 16                          | 26                          |
| 17'-0"                | 6                          | 8            | 11                       | 17                          | 28                          |
| 18'-0"                | 6                          | 9            | 12                       | 18                          | 29                          |
| 20'-0"                | 6                          | 9            | 13                       | 20                          | 32                          |
| 22'-0"                | 7                          | 10           | 14                       | 22                          | 35                          |
| 24'-0"                | 7                          | 11           | 15                       | 24                          | 39                          |
| Spacing not to exceed | 48"                        | 30"          | 24"                      | 13"                         | 8"                          |

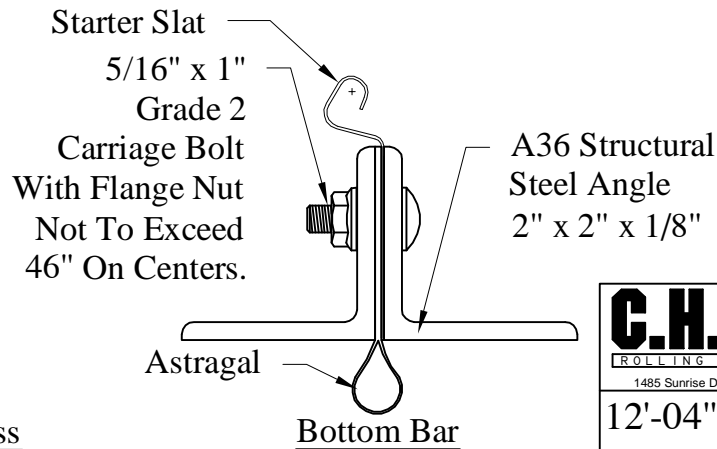
John E. Scates, P.E.  
 3121 Fairgate Drive  
 Carrollton, Texas 75007  
 TXPE 56308, F-2203



Cast Endlock



Steel Slat Thickness  
 .024/.024 insulated



Bottom Bar

**C.H.I.** ROLLING STEEL DOORS  
 1485 Sunrise Drive, Arthur, IL 61911

Date: 8-31-2015  
 Models: 6202, 6222, 6242

12'-04" wide +30.0/-36.8psf

C.H.I. Drawing: TZ6n-12-R1002

Professional Engineer's seal provided only for verification of windload construction details