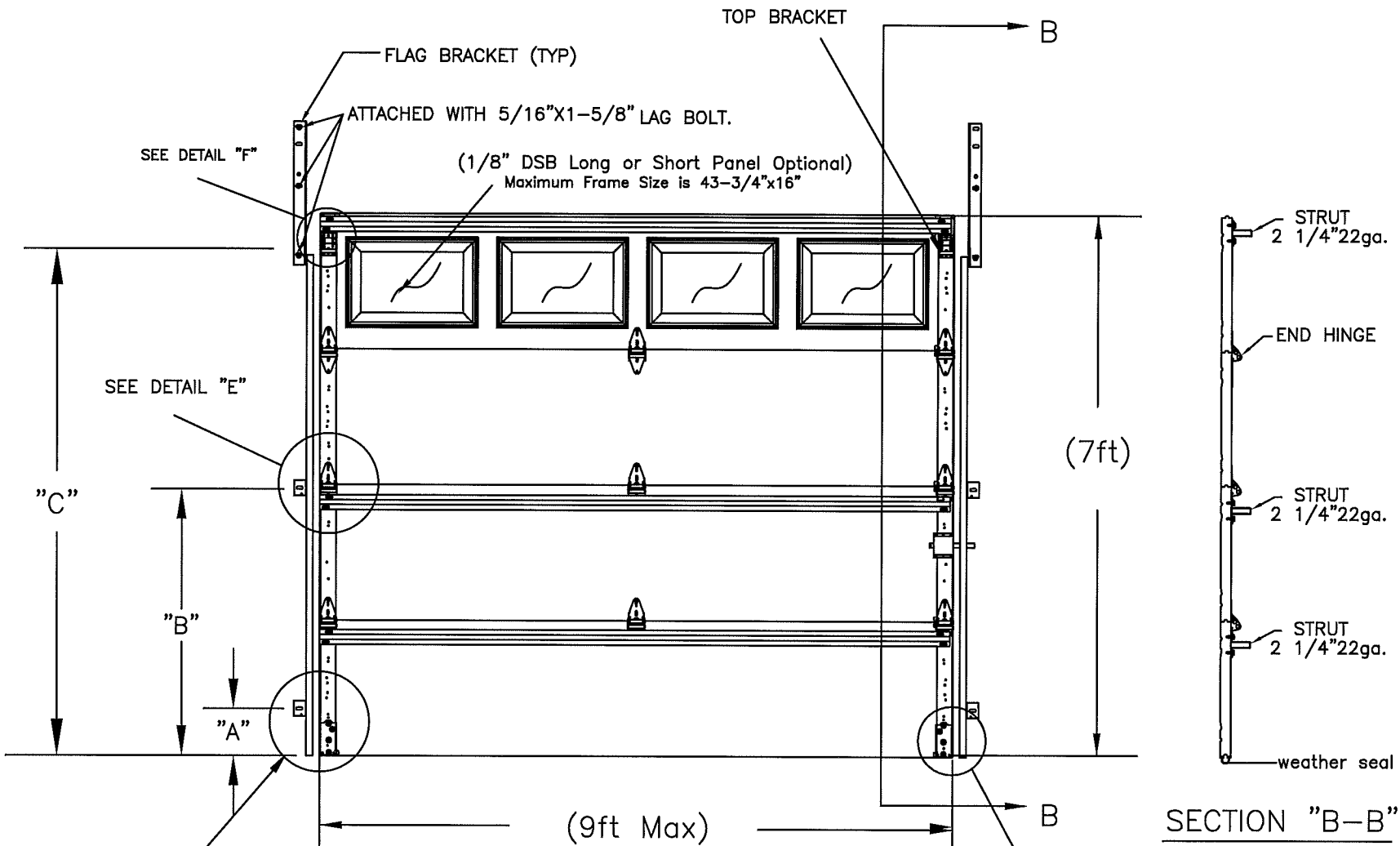


NOTES:

- VANTAGE STANDARD PRESS SHOWN, AMERICAN 200, CS, XL, CSX OR CSL SERIES MAY BE SUBSTITUTED.
- STRUTS ATTACHED WITH 2 SELF DRILLING SCREWS 1/4"-20 X 3/4" AT EACH STILE LOCATION AND BETWEEN EACH CENTER STILE LOCATION WITH TWO 1/4"-20 X 3/4" SCREWS.
- 4 SECTION HIGH DOOR SHOWN (7FT), TALLER DOOR CONFIGURATIONS MAY BE CONSTRUCTED UP TO A MAXIMUM OF 14FT HIGH, USING SAME PANEL CONSTRUCTION AS SHOWN (MAXIMUM SECTION HEIGHT OF 21").
- MINIMUM STEEL THICKNESS ON EXTERIOR AND INTERIOR FACE IS 26 GA. (.0165").
- SECTIONS EMBOSSED 14.00"x20.375" , 16" X20.375", 14"x41", 16"x40" OR SECTIONS WITHOUT EMBOSSEMENT MAY ALSO BE USED. (LOCATION AND QUANTITY OF CENTER STILES MUST BE THE SAME).
- TORSION SPRINGS OR EXTENSION SPRINGS AVAILABLE.
- LOCK MUST BE ATTACHED AT EITHER SIDE OF DOOR. CAM & BAR LOCKS OR AN OPENER MAY BE SUBSTITUTED.
- WOOD MOUNT SHOWN, STEEL AND MASONRY ANGLE AND REVERSE ANGLE MOUNT AVAILABLE. NUMBER OF JAMB BRACKET ANCHOR LOCATIONS MUST BE THE SAME.
- JAMB DETAIL IN ACCORDANCE WITH DWG. # RCWL-0001
- THIS DOOR HAS NOT BEEN TESTED FOR WIND-BORNE DEBRIS.
- USE THIS DRAWING IN CONJUNCTION WITH INSTALLATION INSTRUCTIONS. WHERE THE DRAWING CONFLICTS WITH OTHER INSTALLATION INSTRUCTIONS, THIS DRAWING GOVERNS.



Strut Requirements

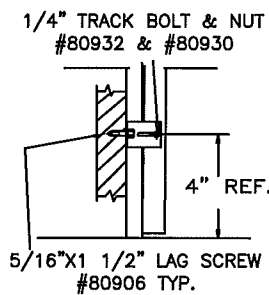
# sections	# Struts
	2-1/4"
4	3
5	4
6	5
7	5
*8	6

*SEE NOTE 4

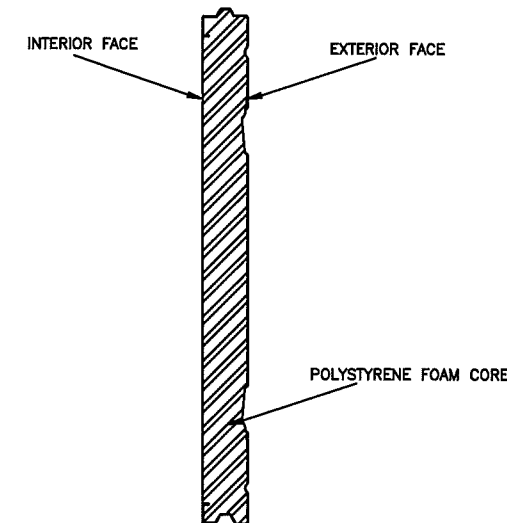
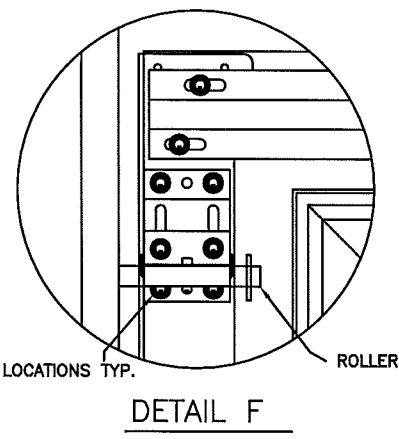
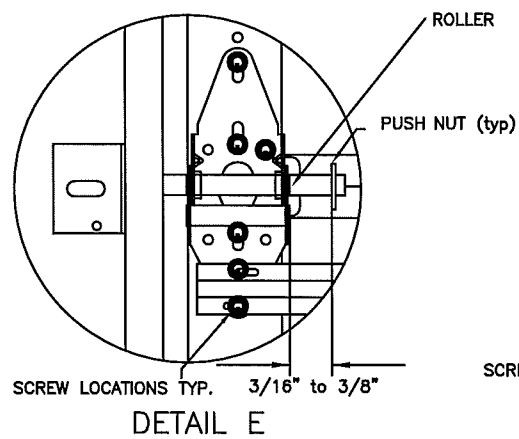
Track Bracket Locations

DOOR HEIGHT	"A"	"B"	"C"
6'-6" thru 7'-0"	4"	42"	X
7'-6" Thru 8'-9"	4"	42"	60"

For Doors over 9' high one Jamb bracket per section must be added and positioned within 3" of the roller.



DETAIL D



DESIGN LOAD +22.9/-26.3

PROFESSIONAL ENGINEER'S SEAL PROVIDED ONLY FOR VERIFICATION OF WINDLOAD CONSTRUCTION DETAILS

JOHN E. SCATES, P.E.
3121 FAIRGATE
CARROLLTON, TX
FL P.E. # 51737
TX. P.E. # 56308, F-2203

This product was tested/evaluated in accordance with ANSI/DASMA 108-05

NOTES: THIS DRAWING AND / OR TECHNICAL INFORMATION ON THIS SHEET IS THE PROPERTY OF MID-AMERICA DOOR COMPANY AND IS LOANED IN CONFIDENCE FOR ENGINEERING AND MUTUAL ASSISTANCE PURPOSES ONLY, AND MAY NOT BE REPRODUCED OR USED TO MANUFACTURE ANYTHING DISCLOSED HEREON WITHOUT THE EXPRESSED PERMISSION OF MID-AMERICA DOOR COMPANY.

Rev.	By	Date	Description	Rev.	By	Date	Description
0	BJR	1/17/06	NEW DRAWING	8			
1	BJR	1/12/12	updated for 2010 spec	9			
2	BJR	7/24/12	updated notes	10			
3				11			
4				12			
5				13			
6				14			
7				15			

SCALE N.T.S. DATE 07-02-08

DRAWN BY BJR

INITIAL CHK. BJR

FINAL CHK.

ENGR.

APPR. BY

Mid-America Door Company

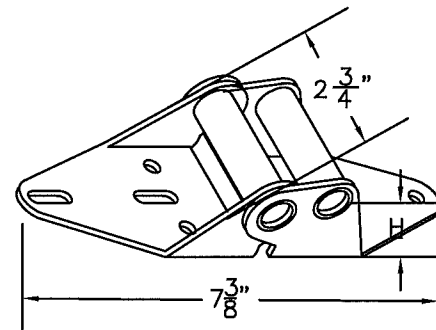
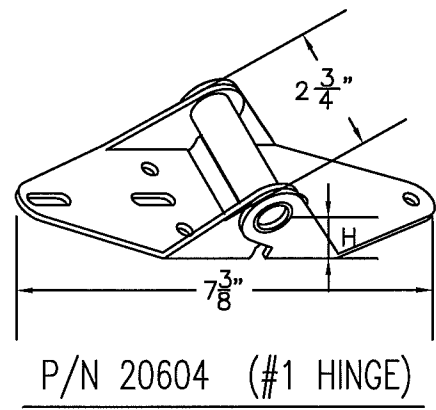
DESCRIPTION VANTAGE WINDLOAD SERIES

TITLE WINDLOAD CONSTRUCTION DETAILS

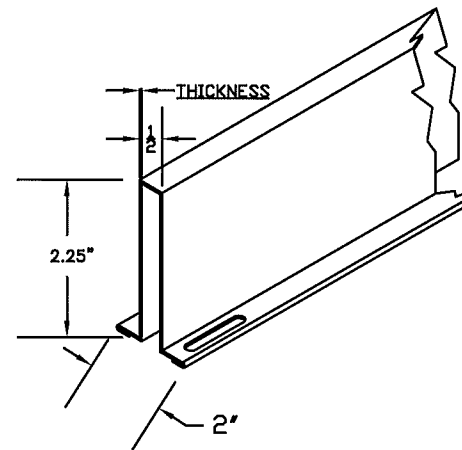
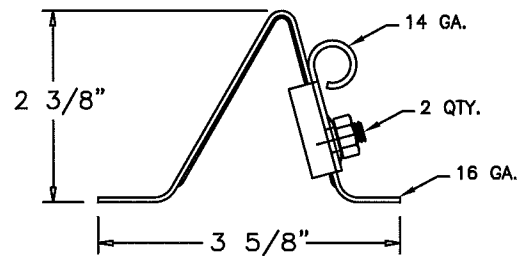
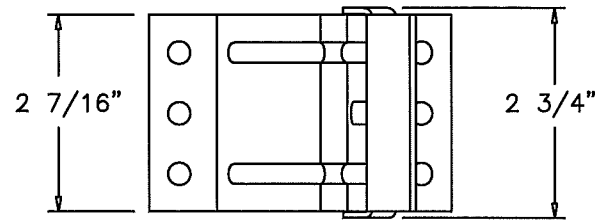
DWG. NO. VWL4-0907

SHT. 1 OF 2

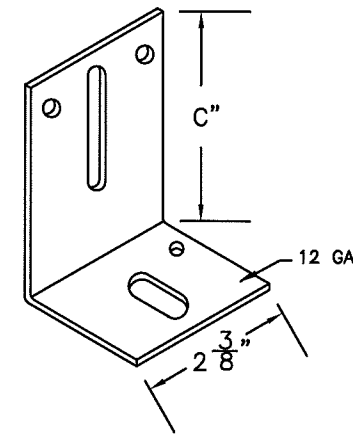
REV. 2



HINGE #	GAGE #	"H"	PART NUMBER
1	14	3/4"	20602
2	14	1"	20606
3	14	1 1/4"	20610
4	14	1 1/2"	20614
5	14	1 3/4"	20616
6	13	2"	20618



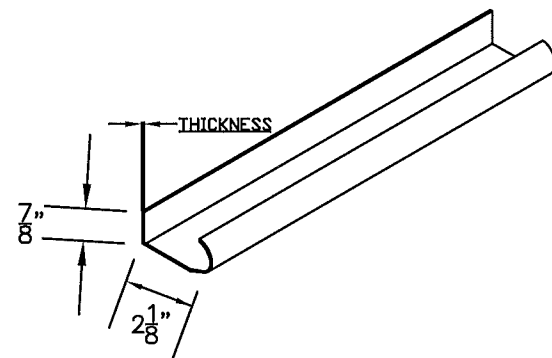
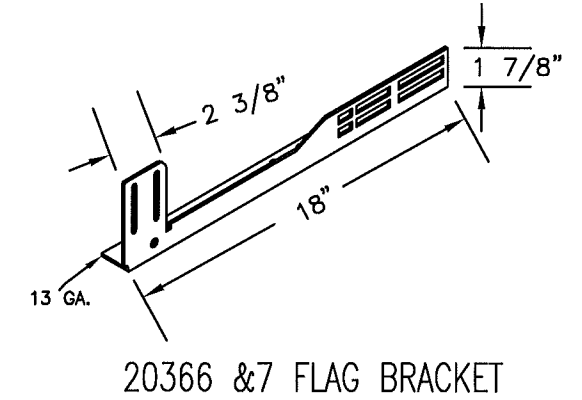
THICKNESS OF STRUTS ARE AS STATED BELOW	
2.25" 22 GAUGE 33 KSI MINIMUM YIELD	.028" MIN.



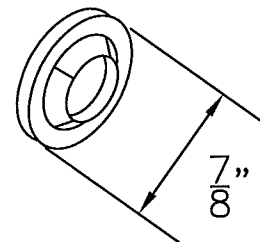
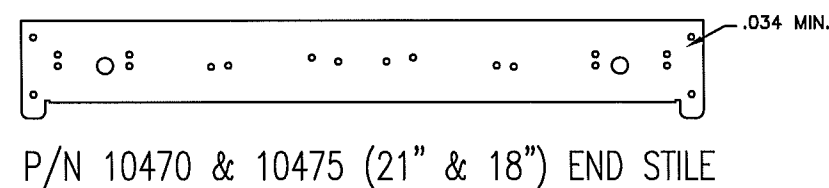
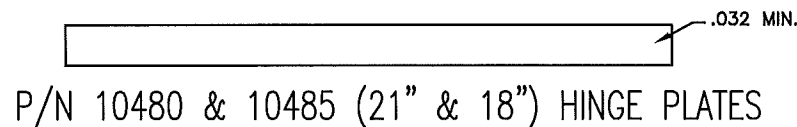
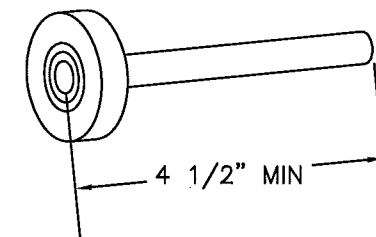
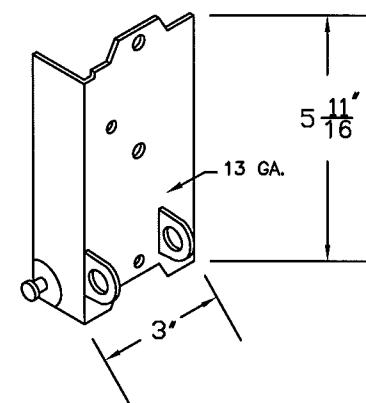
BRACKET #	"C"	PART NUMBER
4	3"	20368
5	3 1/4"	20370
6	3 1/2"	20372
7	3 3/4"	20374
8	4"	20376
9	4 3/4"	20378

NOTES:

1. STRUTS ARE NOT MORE THAN 1 1/2" SHORTER THAN SECTION.
2. USE IN CONJUNCTION WITH INSTALLATION INSTRUCTIONS. WHERE THE DRAWING CONFLICTS WITH OTHER INSTALLATION INSTRUCTIONS, THIS DRAWING GOVERNS.



THICKNESS OF TRACK IS AS STATED BELOW	
VERTICAL TRACK IS MIN. 18 GA.	.045" MIN
HORIZONTAL TRACK IS MIN. 18 GA.	.045" MIN



PROFESSIONAL ENGINEER'S SEAL PROVIDED ONLY FOR VERIFICATION OF WINDLOAD CONSTRUCTION DETAILS

JOHN E. SCATES, P.E.
3121 FAIRGATE
CARROLLTON, TX
FL. P.E. # 51737
TX. P.E. # 56308, F-2203

John E. Scates
8/6/12

NOTES: THIS DRAWING AND / OR TECHNICAL INFORMATION ON THIS SHEET IS THE PROPERTY OF MID-AMERICA DOOR COMPANY AND IS LOANED IN CONFIDENCE FOR ENGINEERING AND MUTUAL ASSISTANCE PURPOSES ONLY, AND MAY NOT BE REPRODUCED OR USED TO MANUFACTURE ANYTHING DISCLOSED HEREON WITHOUT THE EXPRESSED PERMISSION OF MID-AMERICA DOOR COMPANY.

Rev.	By	Date	Description	Rev.	By	Date	Description	SCALE	N.T.S.	DATE
0	BR	6/24/08	NEW DRAWING	8						
1	BR	1/15/13	updated for 2010 spec	9				DRAWN BY	BJR	07-02-08
2	BR	7/26/13	updated first sheet	10				INITIAL CHK.	BJR	"
3				11				FINAL CHK.		"
4				12				ENGR.		"
5				13				APPR. BY		"
6				14						
7				15						

Mid-America Door Company		PNCA CITY, OK
DESCRIPTION WINDLOAD SERIES HARDWARE		
TITLE WINDLOAD CONSTRUCTION DETAILS	DWG. NO. VWL4-0907	SHT. 2 OF 2