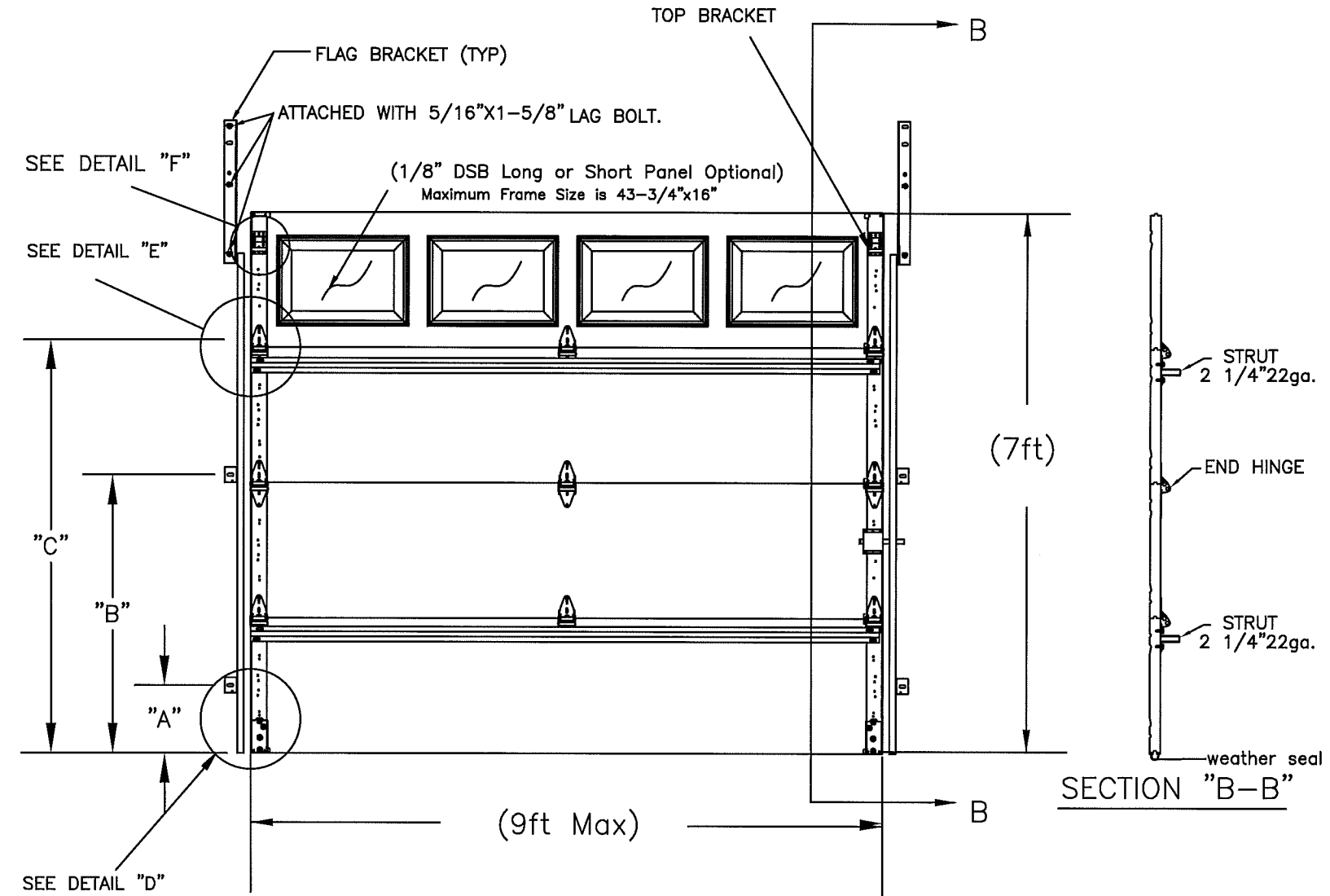


**NOTES:**

- VANTAGE STANDARD PRESS SHOWN, AMERICAN 200, CS, XL, CSX OR CSL SERIES MAY BE SUBSTITUTED.
- STRUTS ATTACHED WITH 2 SELF DRILLING SCREWS 1/4"-20 X 3/4" AT EACH STILE LOCATION AND BETWEEN EACH CENTER STILE LOCATION WITH TWO 1/4"-20 X 3/4" SCREWS.
- 4 SECTION HIGH DOOR SHOWN ( 7FT) ,TALLER DOOR CONFIGURATIONS MAY BE CONSTRUCTED UP TO A MAXIMUM OF 14FT HIGH, USING SAME PANEL CONSTRUCTION AS SHOWN (MAXIMUM SECTION HEIGHT OF 21").
- MINIMUM STEEL THICKNESS ON EXTERIOR AND INTERIOR FACE IS 26 GA. (.0165").
- SECTIONS EMBOSSED 14.00"x20.375" ,16" X20.375", 14"x41", 16"x40" OR SECTIONS WITHOUT EMBOSSEMENT MAY ALSO BE USED. (LOCATION AND QUANTITY OF CENTER STILES MUST BE THE SAME).
- TORSION SPRINGS OR EXTENSION SPRINGS AVAILABLE.
- A LOCK MUST BE ATTACHED TO EITHER SIDE OF THE DOOR. CAM & BAR LOCKS OR AN OPENER MAY BE SUBSTITUTED.
- WOOD MOUNT SHOWN, STEEL AND MASONRY ANGLE AND REVERSE ANGLE MOUNT AVAILABLE. NUMBER OF JAMB BRACKET ANCHOR LOCATIONS MUST BE THE SAME.
- JAMB DETAIL IN ACCORDANCE WITH DWG. # CWL-0001
- THIS DOOR HAS NOT BEEN TESTED FOR WIND-BORNE DEBRIS.
- USE THIS DRAWING IN CONJUNCTION WITH INSTALLATION INSTRUCTIONS. WHERE THE DRAWING CONFLICTS WITH OTHER INSTALLATION INSTRUCTIONS, THIS DRAWING GOVERNS.



**Strut Requirements**

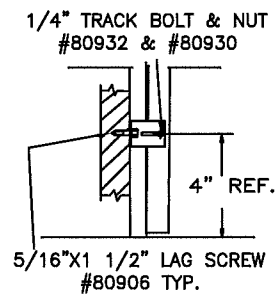
# sections	# Struts
	2-1/4"
4	2
5	3
6	3
7	4
*8	4

\*SEE NOTE 4

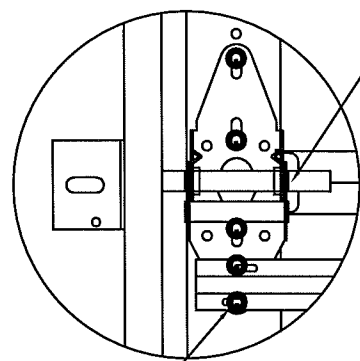
**Track Bracket Locations**

DOOR HEIGHT	"A"	"B"	"C"
6'-6" thru 7'-0"	4"	42"	×
7'-6" Thru 8'-9"	4"	42"	60"

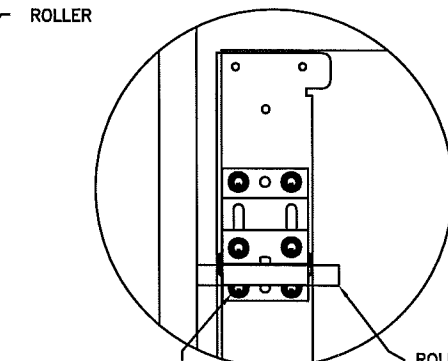
For Doors over 9' high one Jamb bracket per section must be added and positioned within 3" of the roller.



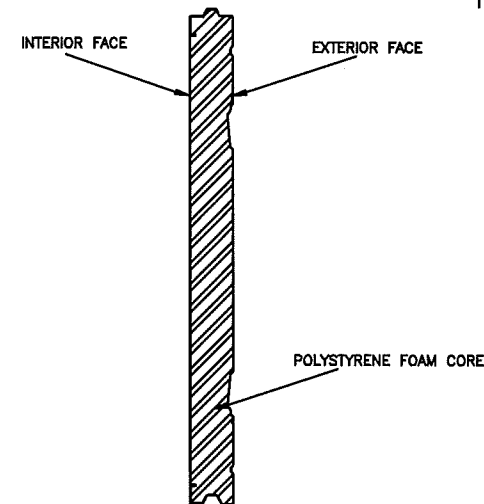
DETAIL D



DETAIL E



DETAIL F



SECTION DETAIL

PROFESSIONAL ENGINEER'S SEAL PROVIDED ONLY FOR VERIFICATION OF WINDLOAD CONSTRUCTION DETAILS

JOHN E. SCATES, P.E.  
3121 FAIRGATE  
CARROLLTON, TX  
FLORIDA P.E. # 51737  
TX. P.E. # 56308, F-2203

John E. Scates  
8/6/12

DESIGN LOAD +19.2/-22

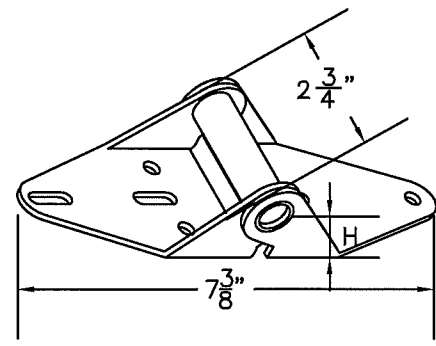
This product was tested/evaluated in accordance with ANSI/DASMA 108-05

NOTES: THIS DRAWING AND / OR TECHNICAL INFORMATION ON THIS SHEET IS THE PROPERTY OF MID-AMERICA DOOR COMPANY AND IS LOANED IN CONFIDENCE FOR ENGINEERING AND MUTUAL ASSISTANCE PURPOSES ONLY, AND MAY NOT BE REPRODUCED OR USED TO MANUFACTURE ANYTHING DISCLOSED HEREON WITHOUT THE EXPRESSED PERMISSION OF MID-AMERICA DOOR COMPANY.

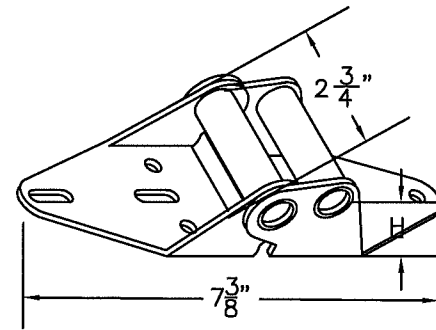
Rev.	By	Date	Description	Rev.	By	Date	Description
0	BJR	1/17/05	NEW DRAWING	8			
1	BJR	1/12/12	UPDATED FOR 2010 FAC	9			
2	BJR	2/27/12	UPDATED NOTES	10			
3				11			
4				12			
5				13			
6				14			
7				15			

SCALE	N.T.S.	DATE	06-24-08
DRAWN BY	BJR	INITIAL CHK.	BJR
FINAL CHK.		ENGR.	
APPR. BY			

Mid-America Door Company		DESCRIPTION	VANTAGE WINDLOAD SERIES
PONCA CITY, OK		TITLE	WINDLOAD CONSTRUCTION DETAILS
DWG. NO.	VWL3-0907	SHT. OF	2
REV.			

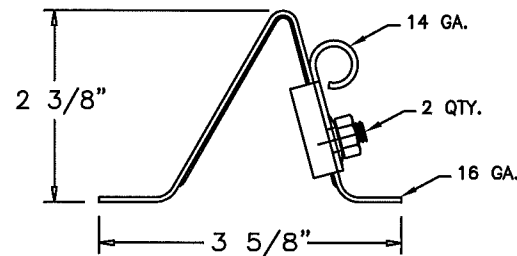
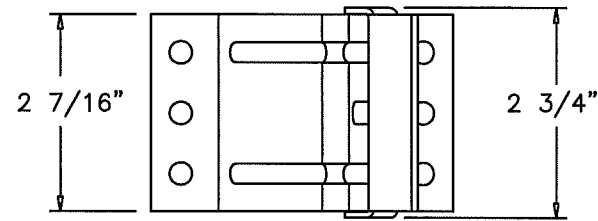


P/N 20602 (#1 HINGE)

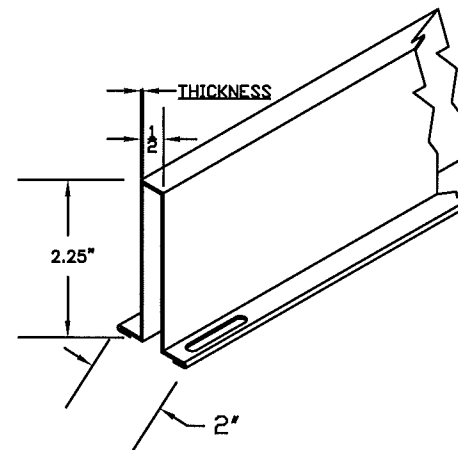


END HINGE

HINGE #	GAGE #	"H"	PART NUMBER
1	14	3/4"	20602
2	14	1"	20606
3	14	1 1/4"	20610
4	14	1 1/2"	20614
5	14	1 3/4"	20616
6	13	2"	20618

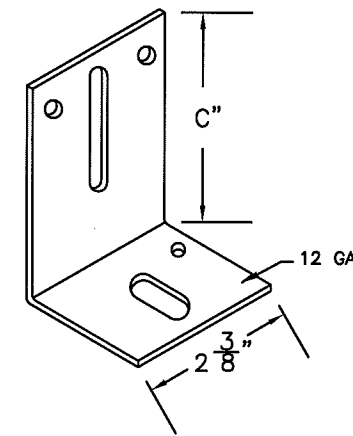


P/N 20356 TOP FIXTURE



2 1/4" STRUT

THICKNESS OF STRUTS ARE AS STATED BELOW	
2.25" 22 GAUGE 33 KSI MINIMUM YIELD	.028" MIN.

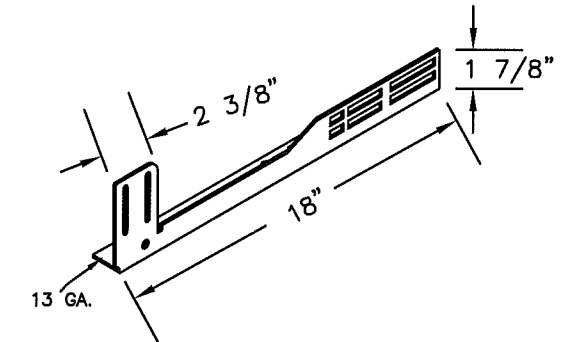


TRACK BRACKET

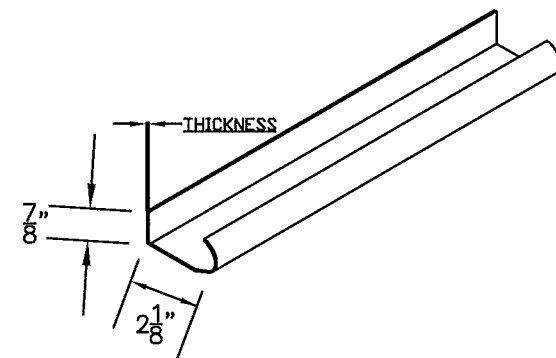
BRACKET #	"C"	PART NUMBER
4	3"	20368
5	3 1/4"	20370
6	3 1/2"	20372
7	3 3/4"	20374
8	4"	20376
9	4 3/4"	20378

NOTES:

1. STRUTS ARE NOT MORE THAN 1 1/2" SHORTER THAN SECTION.
2. USE IN CONJUNCTION WITH INSTALLATION INSTRUCTIONS. WHERE THE DRAWING CONFLICTS WITH OTHER INSTALLATION INSTRUCTIONS, THIS DRAWING GOVERNS.

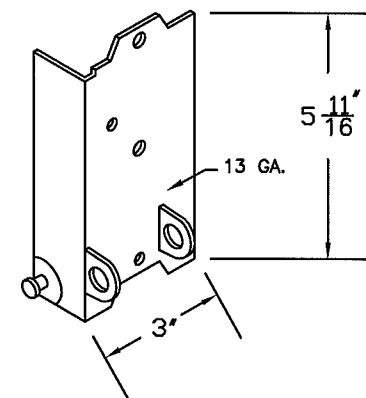


20366 & 7 FLAG BRACKET

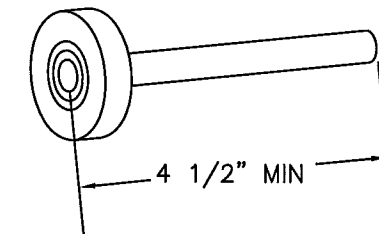


WINDLOAD TRACK

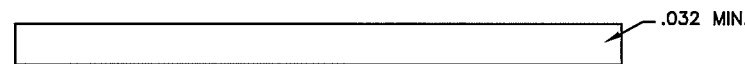
THICKNESS OF TRACK IS AS STATED BELOW	
VERTICAL TRACK IS MIN. 16 GA.	.058" MIN
HORIZONTAL TRACK IS MIN. 16 GA.	.058" MIN



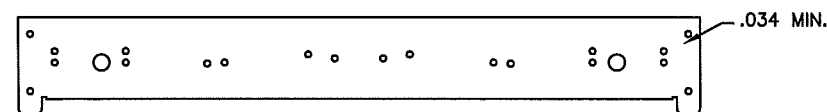
P/N 20334&5 BOTTOM BRKT.



P/N 20804 SHORT STEM 10 BALL ROLLER



P/N 10480 & 10485 (21" & 18") HINGE PLATES



P/N 10470 & 10475 (21" & 18") END STILE



John E. Scates  
8/6/12  
PROFESSIONAL ENGINEER'S  
SEAL PROVIDED ONLY FOR  
VERIFICATION OF WINDLOAD  
CONSTRUCTION DETAILS  
JOHN E. SCATES, P.E.  
3121 FAIRGATE  
CARROLLTON, TX  
FL. P.E. # 51737  
TX. P.E. # 56308, F-2203

NOTES: THIS DRAWING AND / OR TECHNICAL INFORMATION ON THIS SHEET IS THE PROPERTY OF MID-AMERICA DOOR COMPANY AND IS LOANED IN CONFIDENCE FOR ENGINEERING AND MUTUAL ASSISTANCE PURPOSES ONLY, AND MAY NOT BE REPRODUCED OR USED TO MANUFACTURE ANYTHING DISCLOSED HEREON WITHOUT THE EXPRESSED PERMISSION OF MID-AMERICA DOOR COMPANY.

Rev.	By	Date	Description	Rev.	By	Date	Description	SCALE	N.T.S.	DATE
0	BJR	8/4/08	NEW DRAWING	8				DRAWN BY	BJR	8-27-08
1	BJR	1/14/13	UPDATED FOR 8010 PBC	9				INITIAL CHK. TL		8-27-08
2	BJR	7/27/13	UPDATED NOTES	10				FINAL CHK.		
3				11				ENGR.		
4				12				APPR. BY		
5				13						
6				14						
7				15						

Mid-America Door Company		PNCA CITY, OK
DESCRIPTION WINDLOAD SERIES HARDWARE		
TITLE WINDLOAD CONSTRUCTION DETAILS	DWG. NO. VWL3-0907	SHT. 2 OF 2
		REV. 2