

THE METHOD OF TESTING WAS IN SUBSTANTIAL CONFORMANCE WITH THE PROCEDURES DESCRIBED IN DASMA 108. THE PRESSURES SHOWN ON THE DRAWINGS WERE CALCULATED USING ASCE 7-98/02/05 WITH THE FOLLOWING PARAMETERS (5 FEET OF DOOR WIDTH IN END ZONE, ROOF AT ANY SLOPE, AND I=1.0):

WIND SPEED (MPH)	110	100	95	91	87
EXPOSURE LEVEL	B	C	C	D	D
MEAN ROOF HEIGHT	30'	15'	25'	15'	25'

REV	DESCRIPTION OF REVISIONS	DATE	BY

MAX SIZE 18' x 14'

DESIGN LOADS
+18.2 PSF
-20.6 PSF

TEST LOADS (1.5 x DESIGN LOADS)
+27.3 PSF
-30.9 PSF

Thomas L. Shelmerdine, PE (TX PE #85829)
Structural Solutions, PA (TX Firm #F-004063)

STATE OF TEXAS
THOMAS L. SHELMERDINE
85829
LICENSED PROFESSIONAL ENGINEER
TX

5921-G W. Friendly Ave., Greensboro, NC 27410

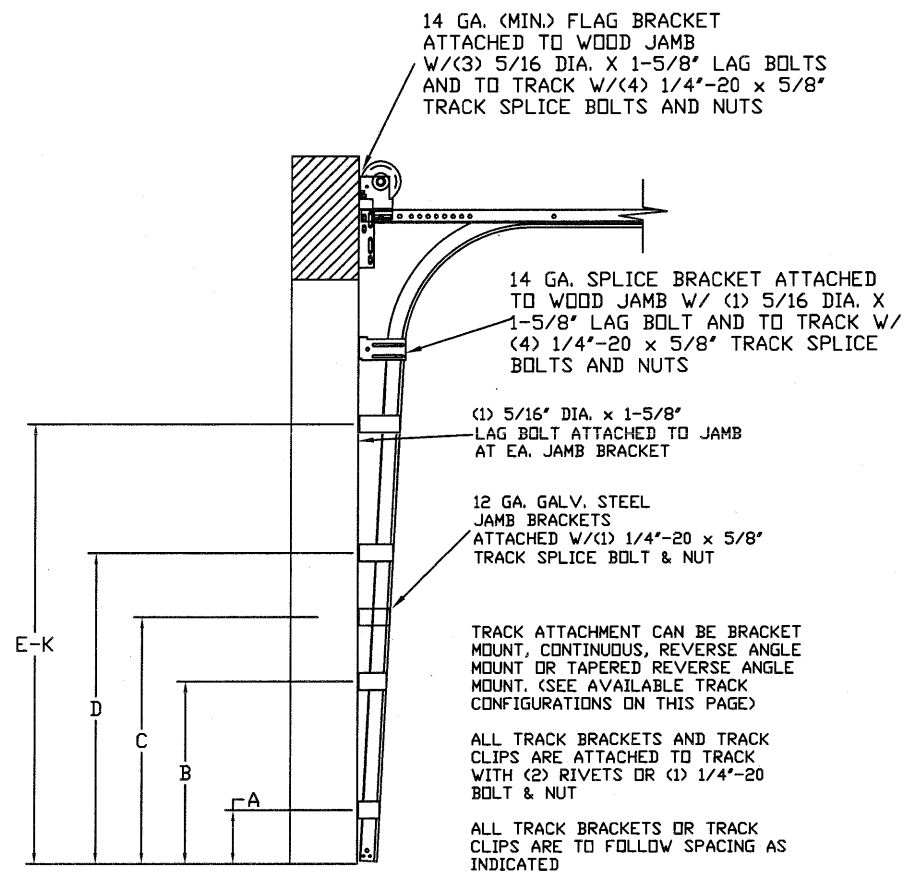
Amarr
ENTREMATIC

MODEL P500 AMARR OLYMPUS 500
MODEL D500 AMARR DESIGNERS CHOICE DC-500

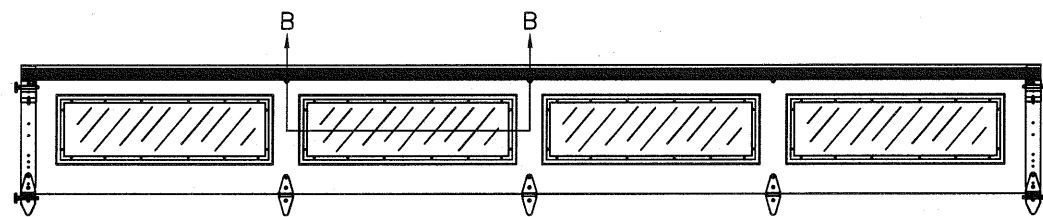
SIZE	DRAWN BY	RLR	DATE	08/01/16	DRAWING NUMBER
B	CHECKED BY	RLR	DATE	08/01/16	IRC-P518-110-15

ENTREMATIC
165 CARRIAGE COURT WINSTON-SALEM, NC 27105

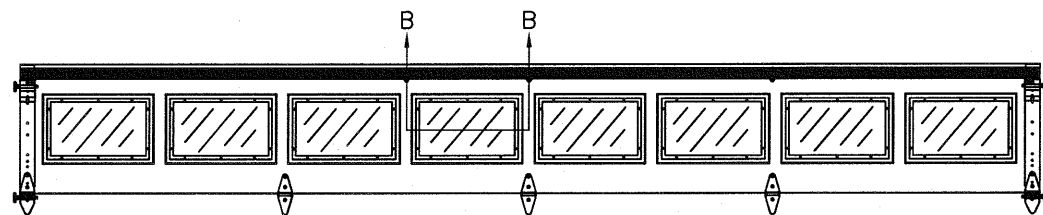
SHEET 1 OF 3



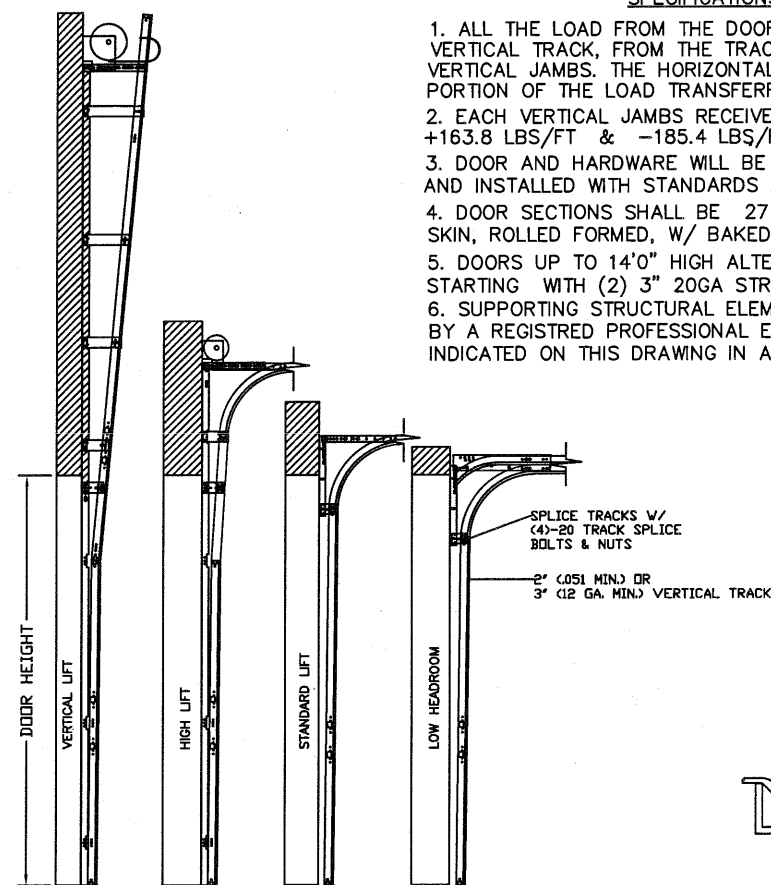
TRACK CONFIGURATION FOR UP TO 14' TALL DOORS
SEE TABLE 1



OPTIONAL GLAZED TOP SECTION W/ RESIDENTIAL LONG PANEL WINDOWS AND STRUT LAYOUT
N.T.S.

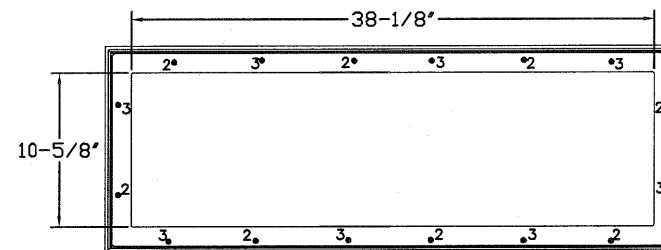


OPTIONAL GLAZED TOP SECTION W/ RESIDENTIAL SHORT PANEL WINDOWS AND STRUT LAYOUT
N.T.S.

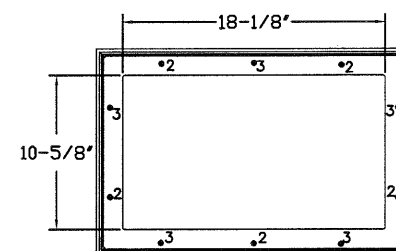


AVAILABLE TRACK CONFIGURATIONS
N.T.S.

TABLE 2



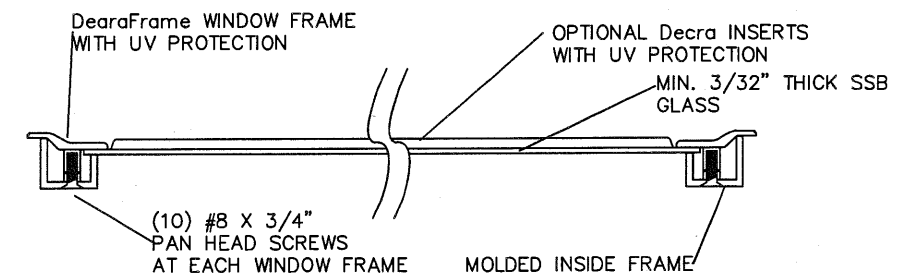
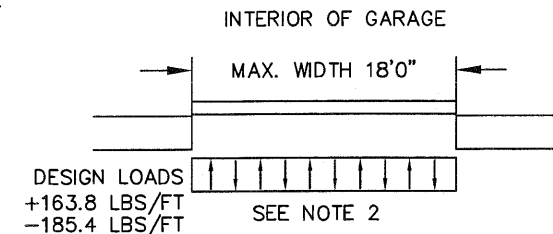
LONG PANEL GLAZING FASTENER DETAIL
N.T.S.



SHORT PANEL GLAZING FASTENER DETAIL
N.T.S.

SPECIFICATIONS AND NOTES

1. ALL THE LOAD FROM THE DOOR IS TRANSFERRED TO THE VERTICAL TRACK, FROM THE TRACK THE LOAD IS TRANSFERRED TO THE VERTICAL JAMBS. THE HORIZONTAL JAMB OR HEADER RECEIVES NO PORTION OF THE LOAD TRANSFERRED FROM THE DOOR.
2. EACH VERTICAL JAMBS RECEIVES MAXIMUM DESIGN LOADS OF: +163.8 LBS/FT & -185.4 LBS/FT
3. DOOR AND HARDWARE WILL BE DESIGNED, MANUFACTURED AND INSTALLED WITH STANDARDS AS SET FORTH BY DASMA.
4. DOOR SECTIONS SHALL BE 27 GA. (.015) MIN. EXTERIOR AND INTERIOR SKIN, ROLLED FORMED, W/ BAKED ON POLYESTER FINISH
5. DOORS UP TO 14'0\"/>



SECTION B-B RESIDENTIAL LONG PANEL WINDOW DETAIL
N.T.S.

REV	DESCRIPTION OF REVISIONS	DATE	BY

MAX SIZE
18' x 14'
DESIGN LOADS
+18.2 PSF
-20.6 PSF
TEST LOADS
(1.5 x DESIGN LOADS)
+27.3 PSF
-30.9 PSF



TX
Thomas L. Shelmerdine, PE (TX PE #85829)
Structural Solutions, PA (TX Firm #F-004063)
5921-G W. Friendly Ave., Greensboro, NC 27410



MODEL P500 AMARR OLYMPUS 500
MODEL D500 AMARR DESIGNERS CHOICE DC-500

SIZE	DRAWN BY	RLR	DATE	08/01/16	DRAWING NUMBER
B	CHECKED BY	RLR	DATE	08/01/16	IRC-P518-110-15
ENTREMATIC 165 CARRIAGE COURT WINSTON-SALEM, NC 27105					SHEET 2 OF 3

TABLE 1

DOOR HEIGHT	TRACK ATTACHMENT											TYPICAL SPLICE
	A	B	C	D	E	F	G	H	I	J	K	
7' 0"	10.0"	34"	46"	58"								76"
7' 6"	10.0"	34"	46"	58"								82"
8' 0"	10.0"	34"	46"	58"	70"							88"
9' 0"	10.0"	34"	46"	58"	70"	82"						100"
9' 6"	10.0"	34"	46"	58"	70"	82"						106"
10' 0"	10.0"	34"	46"	58"	70"	82"	94"					112"
11' 0"	10.0"	34"	46"	58"	70"	82"	94"	106"				124"
12' 0"	10.0"	34"	46"	58"	70"	82"	94"	106"	118"			136"
13' 0"	10.0"	34"	46"	58"	70"	82"	94"	106"	118"	130"		148"
14' 0"	10.0"	34"	46"	58"	70"	82"	94"	106"	118"	130"	142"	160"

ALL TRACK ATTACHMENTS +/- 2" ALLOWED USING SYP OR SPF NO.2 OR BETTER ONLY

TABLE 2

Section Width (ft)	Panel Type	Center Stile Locations (Measured from Left Edge)			Max Design Loads Allowed	
		1st (in)	2nd (in)	3rd (in)	Positive (PSF)	Negative (PSF)
16' 2"	Short	50.27	97.00	143.73	20.2	22.9
16' 2"	Designers Choice	48.75	97.00	145.25	20.2	22.9
16' 4"	Short	51.27	98.00	144.73	20.0	22.7
16' 4"	Designers Choice	49.08	98.00	146.92	20.0	22.7
16' 6"	Short	52.27	99.00	145.73	19.8	22.4
16' 6"	Designers Choice	49.42	99.00	148.59	19.8	22.4
16' 8"	Short	51.34	100.00	148.66	19.6	22.2
16' 8"	Designers Choice	49.92	100.00	150.09	19.6	22.2
16' 10"	Short	51.50	101.00	150.50	19.4	22.0
16' 10"	Designers Choice	50.42	101.00	151.59	19.4	22.0
17' 0"	Short	53.34	102.00	150.66	19.2	21.8
17' 0"	Designers Choice	50.92	102.00	153.09	19.2	21.8
17' 2"	Short	53.00	103.00	153.00	19.0	21.6
17' 2"	Designers Choice	51.42	103.00	154.59	19.0	21.6
17' 4"	Short	54.00	104.00	154.00	18.9	21.3
17' 4"	Designers Choice	51.92	104.00	156.09	18.9	21.3
17' 6"	Short	55.00	105.00	155.00	18.7	21.1
17' 6"	Designers Choice	52.42	105.00	157.59	18.7	21.1
17' 8"	Short	54.80	106.00	157.20	18.5	20.9
17' 8"	Designers Choice	52.92	106.00	159.09	18.5	20.9
17' 10"	Short	55.80	107.00	158.20	18.3	20.7
17' 10"	Designers Choice	53.42	107.00	160.59	18.3	20.7
18' 0"	Short	57.25	108.00	158.75	18.2	20.6
18' 0"	Designers Choice	53.92	108.00	162.09	18.2	20.6

WOOD JAMB ATTACHMENT TO STRUCTURE (OPTIONAL)

2 X 6 VERTICAL JAMB ATTACHMENT TO WOOD FRAME STRUCTURE
 5/16" X 3" LAG SCREWS STARTING 6" FROM ENDS THEN 24" O.C. (1 1/2" EMBEDMENT)

2 X 6 VERTICAL JAMB ATTACHMENT TO 2,000 PSI CONCRETE
 HILTI KWIK BOLT 3/8" X 4" STARTING 6" FROM ENDS THEN 24" O.C. (2 1/2" EMBEDMENT)
 HILTI SLEEVE ANCHOR 3/8" X 2-3/4" STARTING 6" FROM ENDS THEN 24" O.C. (1 1/4" EMBEDMENT)
 ITW/RAMSET REDHEAD (TRU-BOLT) 3/8" X 4" STARTING 6" FROM ENDS THEN 24" O.C. (2 1/2" EMBEDMENT)

2 X 6 VERTICAL JAMB ATTACHMENT TO HOLLOW C-90 BLOCK
 SIMPSON 1/4" X 3" TITEN SCREWS STARTING 6" FROM ENDS, USE PAIRS OF FASTENERS (3" APART) AT 16" O.C. (1 1/2" EMBEDMENT)
 HILTI 1/4" X 2-3/4" KWIK-CON II+ SCREWS STARTING 6" FROM ENDS, USE PAIRS OF FASTENERS (3" APART) AT 16" O.C. (1 1/4" EMBEDMENT)

2 X 6 VERTICAL JAMB ATTACHMENT TO GROUTED C-90 BLOCK (2000 PSI GROUT)
 HILTI SLEEVE ANCHOR 3/8" X 2-3/4" STARTING 6" FROM ENDS THEN 24" O.C. (1 1/4" EMBEDMENT)
 (OR, USE FASTENERS FOR HOLLOW C-90 BLOCK)
 *LAGS AND BOLTS CAN BE COUNTERSUNK TO PROVIDE A FLUSH MOUNTING SURFACE.
 *PREPARATION OF WOOD JAMBS BY OTHERS

REV	DESCRIPTION OF REVISIONS	DATE	BY

MAX SIZE 18' x 14'
 DESIGN LOADS +18.2 PSF -20.6 PSF
 TEST LOADS (1.5 x DESIGN LOADS) +27.3 PSF -30.9 PSF

Thomas L. Shelmerdine, PE (TX PE #85829) Structural Solutions, PA (TX Firm #F-004063)

TX

Amarr
ENTREMATIC

MODEL P500 AMARR OLYMPUS 500
 MODEL D500 AMARR DESIGNERS CHOICE DC-500

SIZE	DRAWN BY	RLR	DATE	08/01/16	DRAWING NUMBER
B	CHECKED BY	RLR	DATE	08/01/16	IRC-P518-110-15

ENTREMATIC
 165 CARRIAGE COURT WINSTON-SALEM, NC 27105

5921-G.W. Friendly Ave., Greensboro, NC 27410

SHEET 3 OF 3