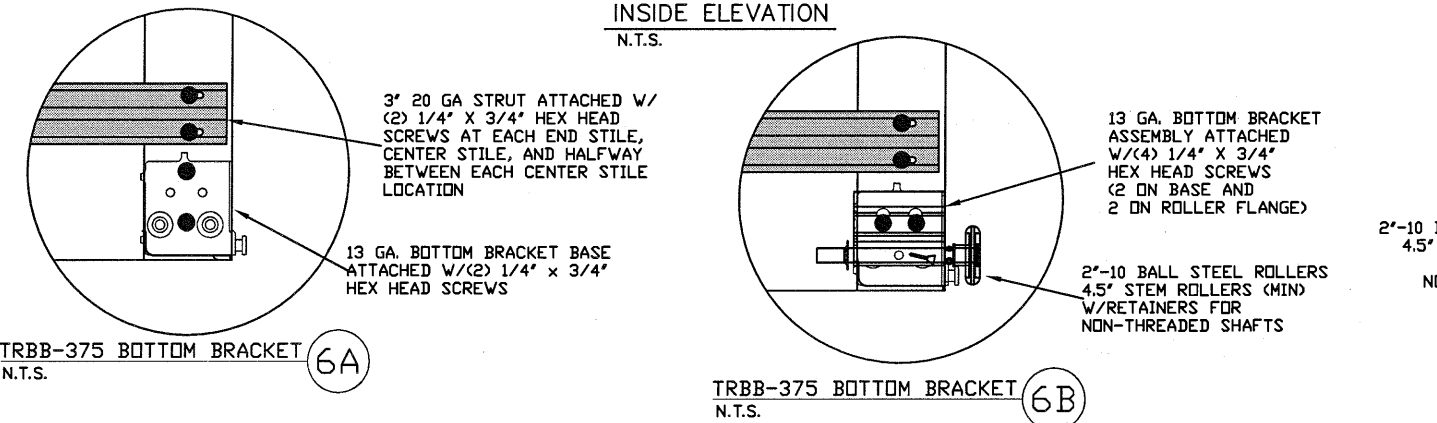
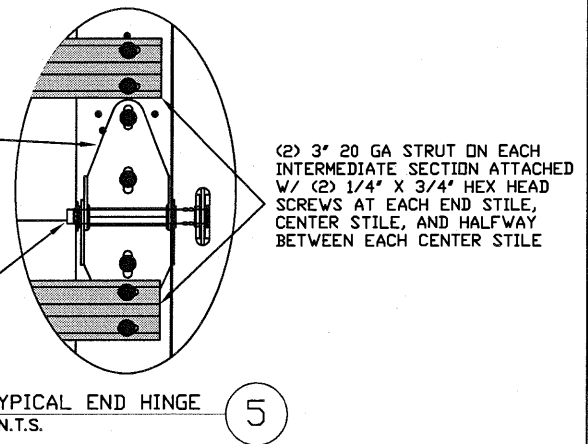


SECTION A-A (SIDE VIEW)
N.T.S.

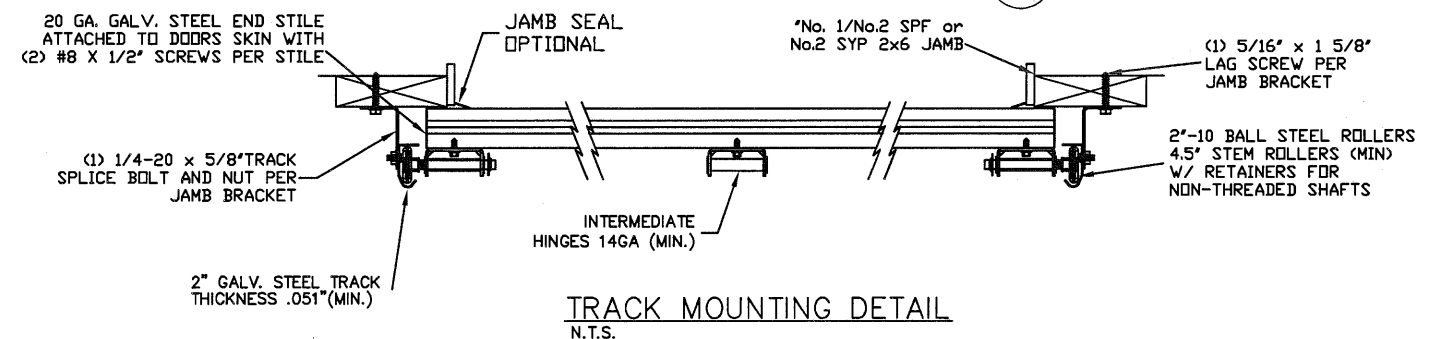


TRBB-375 BOTTOM BRACKET
N.T.S. 6A

TRBB-375 BOTTOM BRACKET
N.T.S. 6B



TYPICAL END HINGE
N.T.S. 5



TRACK MOUNTING DETAIL
N.T.S.

THE METHOD OF TESTING WAS IN SUBSTANTIAL CONFORMANCE WITH THE PROCEDURES DESCRIBED IN DASMA 108. THE PRESSURES SHOWN ON THE DRAWINGS WERE CALCULATED USING ASCE 7-98/02/05 WITH THE FOLLOWING PARAMETERS (5 FEET OF DOOR WIDTH IN END ZONE, ROOF AT ANY SLOPE, AND I=1.0):

WIND SPEED (MPH)	130	118	112	107	103
EXPOSURE LEVEL	B	C	C	D	D
MEAN ROOF HEIGHT	30'	15'	25'	15'	25'

REV	DESCRIPTION OF REVISIONS	DATE	BY

MAX SIZE
16' x 14'

DESIGN LOADS
+25.6 PSF
-29.1 PSF

TEST LOADS
(1.5 x DESIGN LOADS)
+38.4 PSF
-43.6 PSF

Thomas L. Shelmerdine, PE (TX PE #85829)
Structural Solutions, PA (TX Firm #F-004063)

STATE OF TEXAS
THOMAS L. SHELMERDINE
85829
LICENSED PROFESSIONAL ENGINEER

TX

5921-G.W. Friendly Ave., Greensboro, NC 27410

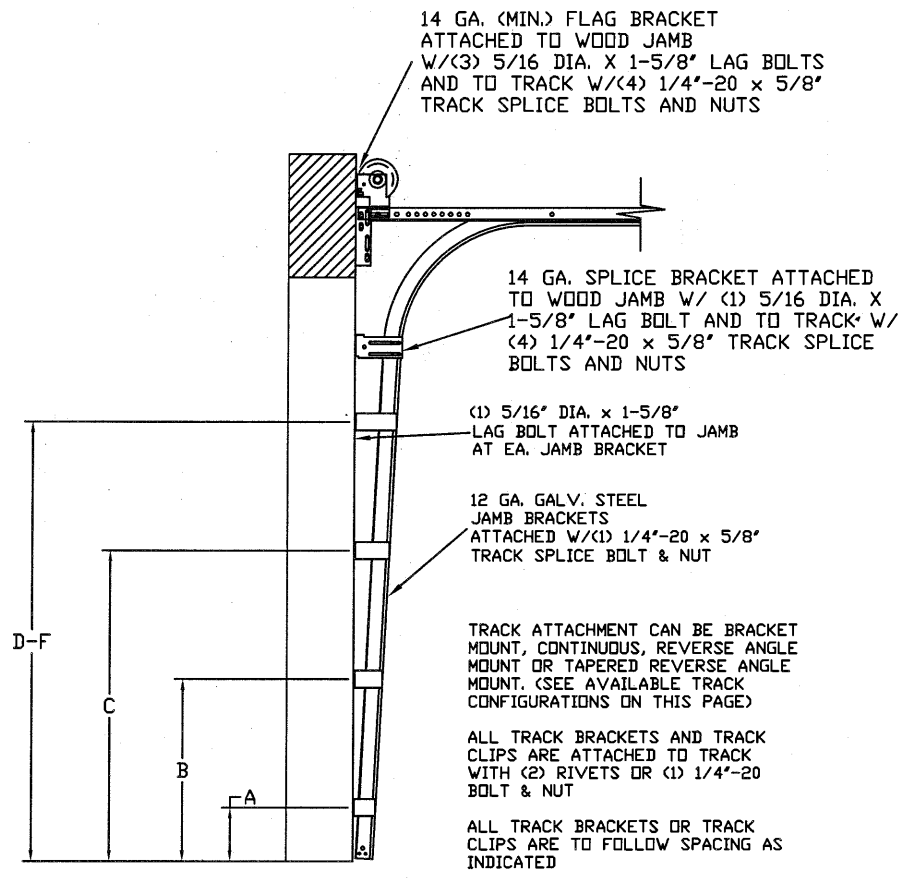
Amarr
ENTREMATIC

MODEL C500 (CLAMSHELL)
AMARR OLYMPUS 3200,
AMARR DESIGNERS CHOICE 3200

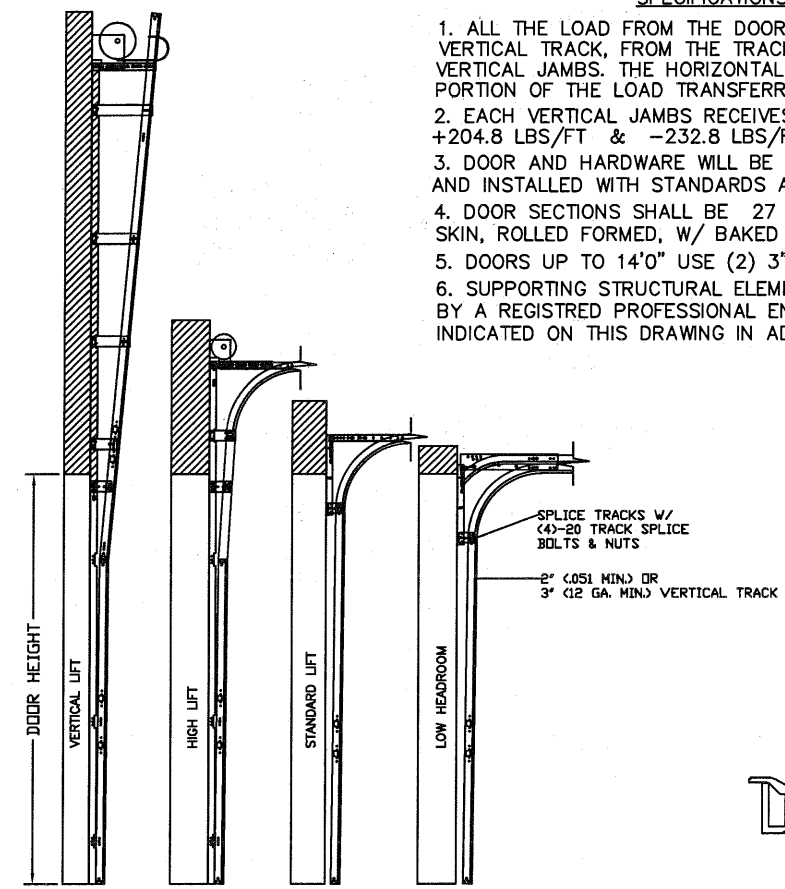
SIZE	DRAWN BY	RLR	DATE	8/3/17	DRAWING NUMBER
B	CHECKED BY	RLR	DATE	8/3/17	IRC-C516-130-15

ENTREMATIC
165 CARRIAGE COURT WINSTON-SALEM, N.C. 27105

SHEET 1 OF 3



TRACK CONFIGURATION FOR UP TO 14' TALL DOORS
SEE TABLE 1



SPECIFICATIONS AND NOTES

1. ALL THE LOAD FROM THE DOOR IS TRANSFERRED TO THE VERTICAL TRACK, FROM THE TRACK THE LOAD IS TRANSFERRED TO THE VERTICAL JAMBS. THE HORIZONTAL JAMB OR HEADER RECEIVES NO PORTION OF THE LOAD TRANSFERRED FROM THE DOOR.
2. EACH VERTICAL JAMBS RECEIVES MAXIMUM DESIGN LOADS OF: +204.8 LBS/FT & -232.8 LBS/FT
3. DOOR AND HARDWARE WILL BE DESIGNED, MANUFACTURED AND INSTALLED WITH STANDARDS AS SET FORTH BY DASMA.
4. DOOR SECTIONS SHALL BE 27 GA. (.015) MIN. EXTERIOR AND INTERIOR SKIN, ROLLED FORMED, W/ BAKED ON POLYESTER FINISH
5. DOORS UP TO 14'0" USE (2) 3" STRUTS PER SECTION.
6. SUPPORTING STRUCTURAL ELEMENTS SHALL BE DESIGNED BY A REGISTERED PROFESSIONAL ENGINEER FOR WIND LOADS INDICATED ON THIS DRAWING IN ADDITION TO OTHER LOADINGS.

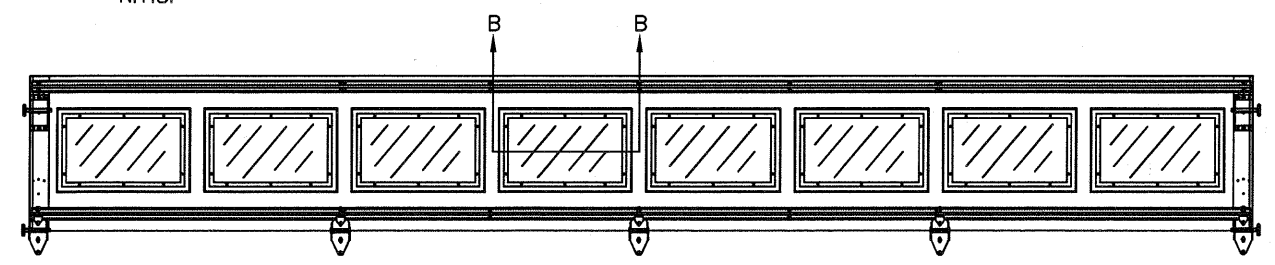
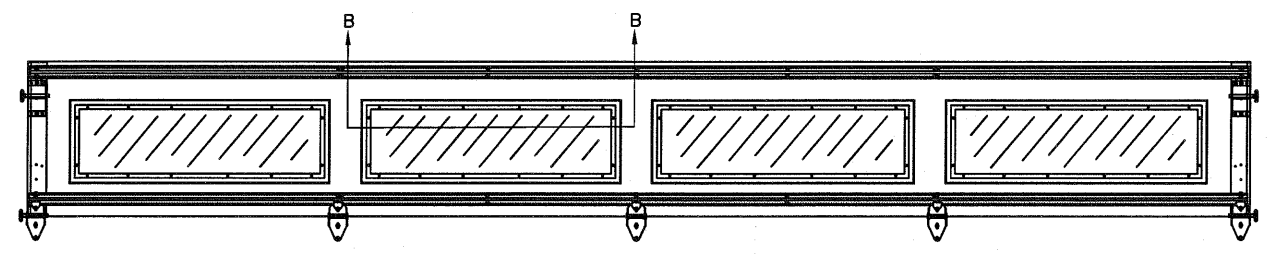
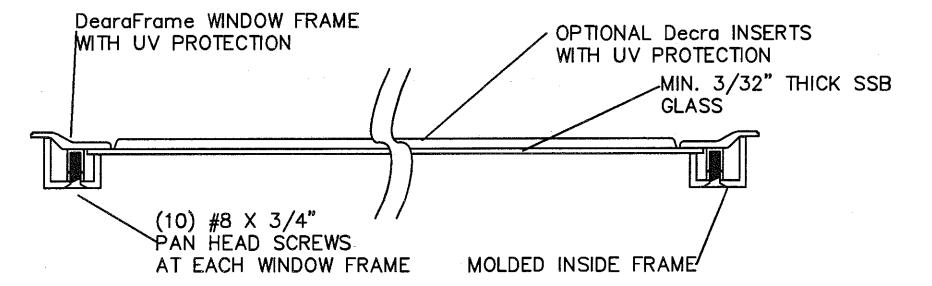
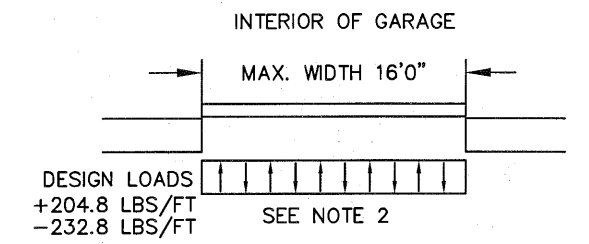
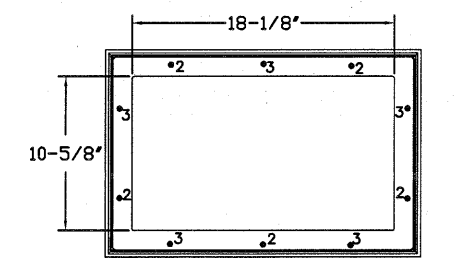
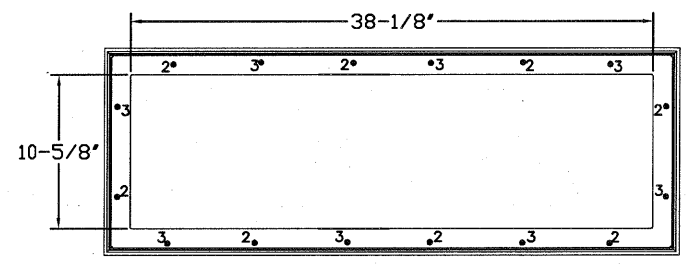


TABLE 2



REV	DESCRIPTION OF REVISIONS	DATE	BY

MAX SIZE 16' x 14'

DESIGN LOADS
+25.6 PSF
-29.1 PSF

TEST LOADS (1.5 x DESIGN LOADS)
+38.4 PSF
-43.6 PSF

Thomas L. Shelmerdine, PE (TX PE #85829)
Structural Solutions, PA (TX Firm #F-004063)

STATE OF TEXAS
THOMAS L. SHELMERDINE
85829
LICENSED PROFESSIONAL ENGINEER

TX

Amarr
ENTREMATICS

MODEL C500 (CLAMSHELL)
AMARR OLYMPUS 3200,
AMARR DESIGNERS CHOICE 3200

SIZE	DRAWN BY	RLR	DATE	8/3/17	DRAWING NUMBER
B	CHECKED BY	RLR	DATE	8/3/17	IRC-C516-130-15

ENTREMATICS
165 CARRIAGE COURT WINSTON-SALEM, N.C. 27105

SHEET 2 OF 3

5921-G W. Friendly Ave., Greensboro, NC 27410

TABLE 1

DOOR HEIGHT	TRACK ATTACHMENT								SPLICE
	A	B	C	D	E	F	G	H	
6' 6"	10"	21"	42"	63"					70"
7'	10"	21"	42"	63"					76"
7' 6"	10"	21"	42"	63"					82"
8'	10"	21"	42"	63"					88"
8' 6"	10"	21"	42"	63"	84"				94"
9'	10"	21"	42"	63"	84"				100"
9' 6"	10"	21"	42"	63"	84"				106"
10'	10"	21"	42"	63"	84"	105"			112"
10' 6"	10"	21"	42"	63"	84"	105"			118"
11'	10"	21"	42"	63"	84"	105"			124"
11' 6"	10"	21"	42"	63"	84"	105"			130"
12'	10"	21"	42"	63"	84"	105"	126"		136"
12' 6"	10"	21"	42"	63"	84"	105"	126"		142"
13'	10"	21"	42"	63"	84"	105"	126"		148"
13' 6"	10"	21"	42"	63"	84"	105"	126"	147"	154"
14'	10"	21"	42"	63"	84"	105"	126"	147"	160"

ALL TRACK ATTACHMENTS +/- 2" ALLOWED
SYP OR SPF NO.2 OR BETTER ONLY

TABLE 2

Section Width (ft)	Panel Type	Center Stile Locations (Measured from Left Edge)				Max Design Loads Allowed	
		1st (in)	2st (in)	3rd (in)	4th (in)	Positive (PSF)	Negative (PSF)
13' 10"	Short	57.16	82.94	108.71		29.5	33.4
14' 0"	Short	57.76	83.94	110.11		29.1	33.0
14' 2"	Short	58.85	84.94	111.41		28.8	32.6
14' 4"	Short	59.16	85.94	112.71		28.4	32.2
14' 6"	Short	59.86	86.94	114.01		28.1	31.9
14' 8"	Short	60.56	87.94	115.31		27.8	31.5
14' 8"	Long	44.81	88.00	131.19		27.8	31.5
14' 10"	Short	61.26	88.94	116.61		27.5	31.1
14' 10"	Long	45.60	89.00	132.40		27.5	31.1
15' 0"	Short	61.94	89.94	117.94		27.2	30.8
15' 0"	Long	46.60	90.00	133.40		27.2	30.8
15' 2"	Short	62.66	90.94	119.21		26.9	30.4
15' 2"	Long	47.60	91.00	134.40		26.9	30.4
15' 4"	Short	53.60	79.20	104.80	130.40	26.6	30.1
15' 4"	Long	47.25	92.00	136.75		26.6	30.1
15' 6"	Short	46.62	93.00	139.38		26.3	29.9
15' 6"	Long	47.60	93.00	138.40		26.3	29.9
15' 8"	Short	47.62	94.00	140.38		26.0	29.6
15' 8"	Long	48.60	94.00	139.40		26.0	29.6
15' 10"	Short	48.62	95.00	141.38		25.7	29.3
15' 10"	Long	49.17	95.00	140.83		25.7	29.3
16' 0"	Short	49.62	96.00	142.38		25.6	29.1
16' 0"	Long	50.60	96.00	141.40		25.6	29.1

WOOD JAMB ATTACHMENT TO STRUCTURE (OPTIONAL)

2 X 6 VERTICAL JAMB ATTACHMENT TO WOOD FRAME STRUCTURE
5/16" X 3" LAG SCREWS STARTING 6" FROM ENDS THEN 24" O.C. (1 1/2" EMBEDMENT)

2 X 6 VERTICAL JAMB ATTACHMENT TO 2,000 PSI CONCRETE
HILTI KWIK BOLT 3/8" X 4" STARTING 6" FROM ENDS THEN 24" O.C. (2 1/2" EMBEDMENT)
HILTI SLEEVE ANCHOR 3/8" X 2-3/4" STARTING 6" FROM ENDS THEN 20" O.C. (1 1/4" EMBEDMENT)
ITW/RAMSET REDHEAD (TRU-BOLT) 3/8" X 4" STARTING 6" FROM ENDS THEN 24" O.C. (2 1/2" EMBEDMENT)

2 X 6 VERTICAL JAMB ATTACHMENT TO HOLLOW C-90 BLOCK
SIMPSON 1/4" X 3" TITEN SCREWS STARTING 6" FROM ENDS, USE PAIRS OF FASTENERS (3" APART) AT 16" O.C. (1 1/2" EMBEDMENT)
HILTI 1/4" X 2-3/4" KWIK-CON II+ SCREWS STARTING 6" FROM ENDS, USE PAIRS OF FASTENERS (3" APART) AT 16" O.C. (1 1/4" EMBEDMENT)

2 X 6 VERTICAL JAMB ATTACHMENT TO GROUTED C-90 BLOCK (2000 PSI GROUT)
HILTI SLEEVE ANCHOR 3/8" X 2-3/4" STARTING 6" FROM ENDS THEN 24" O.C. (1 1/4" EMBEDMENT)
(OR, USE FASTENERS FOR HOLLOW C-90 BLOCK)

*LAGS AND BOLTS CAN BE COUNTERSUNK TO PROVIDE A FLUSH MOUNTING SURFACE.
*PREPARATION OF WOOD JAMBS BY OTHERS

REV	DESCRIPTION OF REVISIONS	DATE	BY

MAX SIZE 16' x 14'
DESIGN LOADS +25.6 PSF -29.1 PSF
TEST LOADS (1.5 x DESIGN LOADS) +38.4 PSF -43.6 PSF

Thomas L. Shelmerdine, PE (TX PE #85829)
Structural Solutions, PA (TX Firm #F-004063)

TX

Amarr
ENTREMATICS

MODEL C500 (CLAMSHELL)
AMARR OLYMPUS 3200,
AMARR DESIGNERS CHOICE 3200

SIZE	DRAWN BY RLR	DATE 8/3/17	DRAWING NUMBER
B	CHECKED BY RLR	DATE 8/3/17	IRC-C516-130-15

ENTREMATICS
165 CARRIAGE COURT WINSTON-SALEM, N.C. 27105

5921-G W. Friendly Ave., Greensboro, NC 27410

SHEET 3 OF 3