

THE METHOD OF TESTING WAS IN SUBSTANTIAL CONFORMANCE WITH THE PROCEDURES DESCRIBED IN DASMA 108. THE PRESSURES SHOWN ON THE DRAWINGS WERE CALCULATED USING ASCE 7-98/02/05 WITH THE FOLLOWING PARAMETERS (5 FEET OF DOOR WIDTH IN END ZONE, ROOF AT ANY SLOPE, AND I=1.0):

WIND SPEED (MPH)	110	100	95	91	87
EXPOSURE LEVEL	B	C	C	D	D
MEAN ROOF HEIGHT	30'	15'	25'	15'	25'

REV	DESCRIPTION OF REVISIONS	DATE	BY

MAX SIZE 16' x 14'  
 DESIGN LOADS +18.3 PSF -20.8 PSF  
 TEST LOADS (1.5 x DESIGN LOADS) +27.5 PSF -31.2 PSF

Thomas L. Shelmerdine, PE (TX PE #85829)  
 Structural Solutions, PA (TX Firm #F-004063)

STATE OF TEXAS  
 THOMAS L. SHELMERDINE  
 85829  
 LICENSED PROFESSIONAL ENGINEER  
 TX

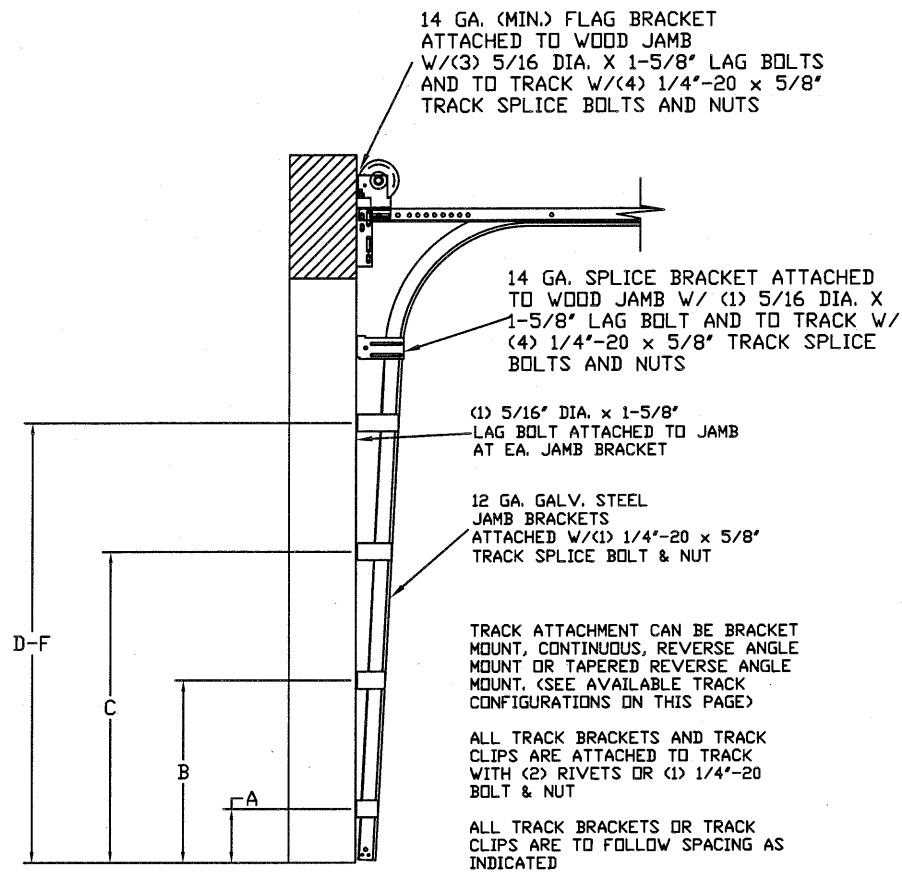
5921-G W. Friendly Ave., Greensboro, NC 27410

**ENTREMATIC**  
 165 CARRIAGE COURT WINSTON-SALEM, NC. 27105

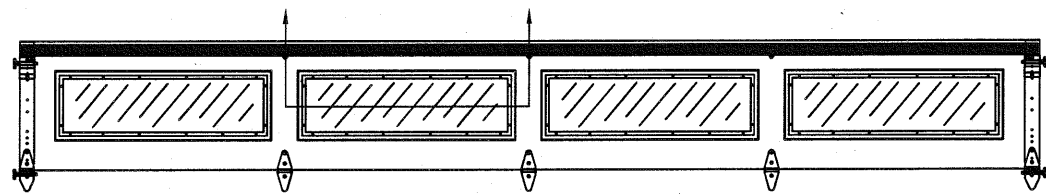
**MODEL C500 (CLAMSHELL)  
 AMARR OLYMPUS**

SIZE	DRAWN BY	RLR	DATE	10/20/15	DRAWING NUMBER
B	CHECKED BY	RLR	DATE	10/20/15	IRC-C516-110-15

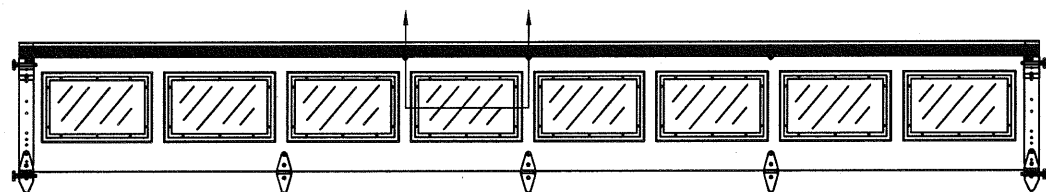
SHEET 1 OF 3



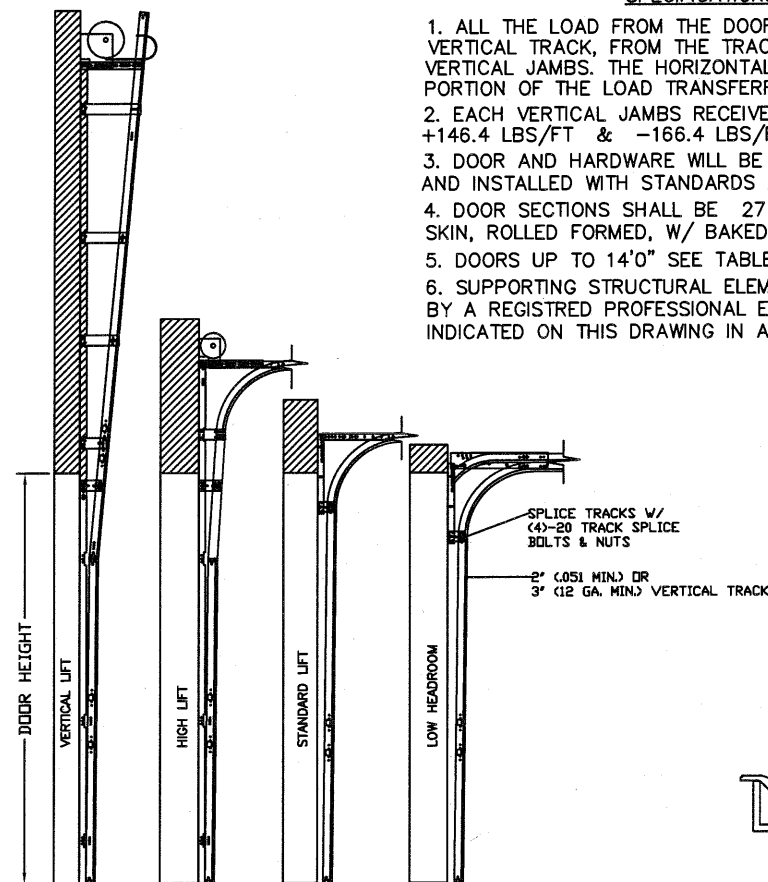
TRACK CONFIGURATION FOR UP TO 14' TALL DOORS  
SEE TABLE 1



OPTIONAL GLAZED TOP SECTION W/ RESIDENTIAL LONG PANEL WINDOWS AND STRUT LAYOUT  
N.T.S.



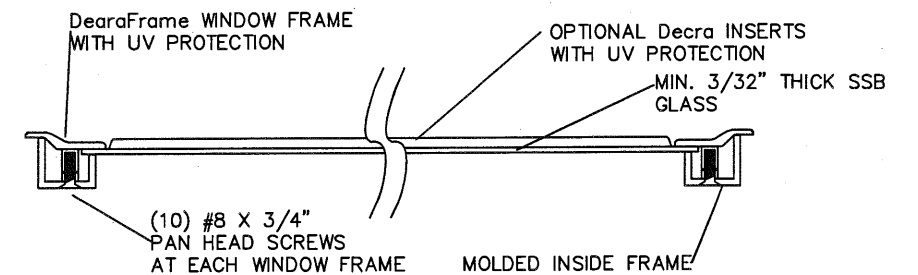
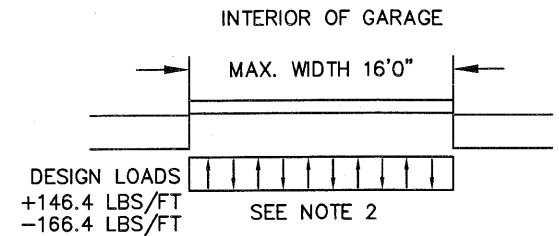
OPTIONAL GLAZED TOP SECTION W/ RESIDENTIAL SHORT PANEL WINDOWS AND STRUT LAYOUT  
N.T.S.



AVAILABLE TRACK CONFIGURATIONS  
N.T.S.

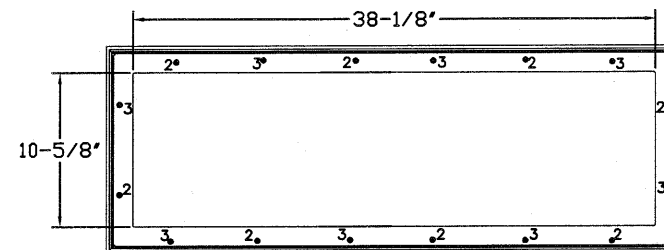
**SPECIFICATIONS AND NOTES**

1. ALL THE LOAD FROM THE DOOR IS TRANSFERRED TO THE VERTICAL TRACK, FROM THE TRACK THE LOAD IS TRANSFERRED TO THE VERTICAL JAMBS. THE HORIZONTAL JAMB OR HEADER RECEIVES NO PORTION OF THE LOAD TRANSFERRED FROM THE DOOR.
2. EACH VERTICAL JAMBS RECEIVES MAXIMUM DESIGN LOADS OF: +146.4 LBS/FT & -166.4 LBS/FT
3. DOOR AND HARDWARE WILL BE DESIGNED, MANUFACTURED AND INSTALLED WITH STANDARDS AS SET FORTH BY DASMA.
4. DOOR SECTIONS SHALL BE 27 GA. (.015) MIN. EXTERIOR AND INTERIOR SKIN, ROLLED FORMED, W/ BAKED ON POLYESTER FINISH
5. DOORS UP TO 14'0" SEE TABLE 3 FOR STRUT CONFIGURATION.
6. SUPPORTING STRUCTURAL ELEMENTS SHALL BE DESIGNED BY A REGISTERED PROFESSIONAL ENGINEER FOR WIND LOADS INDICATED ON THIS DRAWING IN ADDITION TO OTHER LOADINGS.

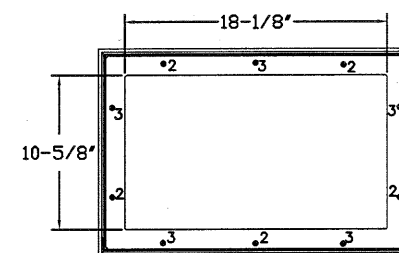


SECTION B-B RESIDENTIAL LONG PANEL WINDOW DETAIL  
N.T.S.

**TABLE 2**



LONG PANEL GLAZING FASTENER DETAIL  
N.T.S.

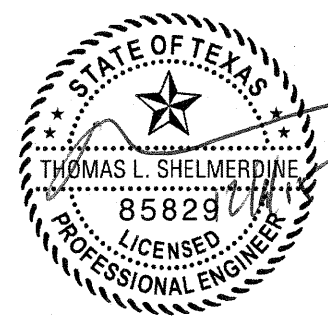


SHORT PANEL GLAZING FASTENER DETAIL  
N.T.S.

REV	DESCRIPTION OF REVISIONS	DATE	BY

MAX SIZE  
16' x 14'  
DESIGN LOADS  
+18.3 PSF  
-20.8 PSF  
TEST LOADS  
(1.5 x DESIGN LOADS)  
+27.5 PSF  
-31.2 PSF

Thomas L. Shelmerdine, PE (TX PE #85829)  
Structural Solutions, PA (TX Firm #004063)



TX

5921-G W. Friendly Ave., Greensboro, NC 27410

**ENTREMATIIC**

165 CARRIAGE COURT WINSTON-SALEM, N.C. 27105

**MODEL C500 (CLAMSHELL)  
AMARR OLYMPUS**

SIZE	DRAWN BY	RLR	DATE	10/20/15	DRAWING NUMBER
B	CHECKED BY	RLR	DATE	10/20/15	IRC-C516-110-15

TABLE 1

DOOR HEIGHT		TRACK ATTACHMENT						TYPICAL SPLICE
		A	B	C	D	E	F	
7' 0"		10.0"	34"	58"				76"
7' 6"		10.0"	34"	58"				82"
8' 0"		10.0"	34"	58"				88"
9' 0"		10.0"	34"	58"	82"			100"
9' 6"		10.0"	34"	58"	82"			106"
10' 0"		10.0"	34"	58"	82"			112"
11' 0"		10.0"	34"	58"	82"	106"		124"
12' 0"		10.0"	34"	58"	82"	106"		136"
13' 0"		10.0"	34"	58"	82"	106"	130"	148"
14' 0"		10.0"	34"	58"	82"	106"	130"	160"

ALL TRACK ATTACHMENTS +/- 2" ALLOWED USING SYP OR SPF NO.2 OR BETTER ONLY

TABLE 2

Section Width (ft)	Panel Type	Center Stile Locations (Measured from Left Edge)				Max Design Loads Allowed	
		1st (in)	2st (in)	3rd (in)	4th (in)	Positive (PSF)	Negative (PSF)
13' 10"	Short	57.16	82.94	108.71		21.1	24.0
14' 0"	Short	57.76	83.94	110.11		20.9	23.7
14' 2"	Short	58.85	84.94	111.41		20.6	23.4
14' 4"	Short	59.16	85.94	112.71		20.4	23.2
14' 6"	Short	59.86	86.94	114.01		20.1	22.9
14' 8"	Short	60.56	87.94	115.31		19.9	22.6
14' 8"	Long	44.81	88.00	131.19		19.9	22.6
14' 10"	Short	61.26	88.94	116.61		19.7	22.4
14' 10"	Long	45.60	89.00	132.40		19.7	22.4
15' 0"	Short	61.94	89.94	117.94		19.5	22.1
15' 0"	Long	46.60	90.00	133.40		19.5	22.1
15' 2"	Short	62.66	90.94	119.21		19.3	21.9
15' 2"	Long	47.60	91.00	134.40		19.3	21.9
15' 4"	Short	53.60	79.20	104.80	130.40	19.0	21.7
15' 4"	Long	47.25	92.00	136.75		19.0	21.7
15' 6"	Short	46.62	93.00	139.38		18.8	21.4
15' 6"	Long	47.60	93.00	138.40		18.8	21.4
15' 8"	Short	47.62	94.00	140.38		18.6	21.2
15' 8"	Long	48.60	94.00	139.40		18.6	21.2
15' 10"	Short	48.62	95.00	141.38		18.4	21.0
15' 10"	Long	49.17	95.00	140.83		18.4	21.0
16' 0"	Short	49.62	96.00	142.38		18.3	20.8
16' 0"	Long	50.60	96.00	141.40		18.3	20.8

TABLE 3

DOOR HEIGHT	SECTION										
	Btm	#2	#3	#4	#5	#6	#7	#8			
12' 6"-14'-0"	2"	2"	3"	3"	3"	3"	3"	3"	3"	3"	2"
10' 9"-12'-3"	2"	2"	3"	3"	3"	3"	3"	3"	2"		
9' 0"-10'-6"	2"	2"	3"	3"	3"	3"	3"	2"			
7' 6"-8'-9"	2"	2"	3"	3"	3"	2"					
6' 0"-7'-0"	2"	2"	3"	3"	2"						

WOOD JAMB ATTACHMENT TO STRUCTURE (OPTIONAL)

2 X 6 VERTICAL JAMB ATTACHMENT TO WOOD FRAME STRUCTURE  
 5/16" X 3" LAG SCREWS STARTING 6" FROM ENDS THEN 24" O.C. (1 1/2" EMBEDMENT)

2 X 6 VERTICAL JAMB ATTACHMENT TO 2,000 PSI CONCRETE  
 HILTI KWIK BOLT 3/8" X 4" STARTING 6" FROM ENDS THEN 24" O.C. (2 1/2" EMBEDMENT)  
 HILTI SLEEVE ANCHOR 3/8" X 2-3/4" STARTING 6" FROM ENDS THEN 24" O.C. (1 1/4" EMBEDMENT)  
 ITW/RAMSET REDHEAD (TRU-BOLT) 3/8" X 4" STARTING 6" FROM ENDS THEN 24" O.C. (2 1/2" EMBEDMENT)

2 X 6 VERTICAL JAMB ATTACHMENT TO HOLLOW C-90 BLOCK  
 SIMPSON 1/4" X 3" TITEN SCREWS STARTING 6" FROM ENDS, USE PAIRS OF FASTENERS (3" APART) AT 24" O.C. (1 1/2" EMBEDMENT)  
 HILTI 1/4" X 2-3/4" KWIK-CON II+ SCREWS STARTING 6" FROM ENDS, USE PAIRS OF FASTENERS (3" APART) AT 24" O.C. (1 1/4" EMBEDMENT)

2 X 6 VERTICAL JAMB ATTACHMENT TO GROUDED C-90 BLOCK (2000 PSI GROUT)  
 HILTI SLEEVE ANCHOR 3/8" X 2-3/4" STARTING 6" FROM ENDS THEN 24" O.C. (1 1/4" EMBEDMENT)  
 (OR, USE FASTENERS FOR HOLLOW C-90 BLOCK)

\*LAGS AND BOLTS CAN BE COUNTERSUNK TO PROVIDE A FLUSH MOUNTING SURFACE.  
 \*PREPARATION OF WOOD JAMBS BY OTHERS

REV	DESCRIPTION OF REVISIONS	DATE	BY

MAX SIZE 16' x 14'  
 DESIGN LOADS +18.3 PSF -20.8 PSF  
 TEST LOADS (1.5 x DESIGN LOADS) +27.5 PSF -31.2 PSF

Thomas L. Shelmerdine, PE (TX PE #85829)  
 Structural Solutions, PA (TX Firm #F-004063)

TX

**ENTRE/MATIC**  
 165 CARRIAGE COURT WINSTON-SALEM, N.C. 27105

**MODEL C500 (CLAMSHELL)  
 AMARR OLYMPUS**

SIZE	DRAWN BY	RLR	DATE	10/20/15	DRAWING NUMBER
B	CHECKED BY	RLR	DATE	10/20/15	IRC-C516-110-15

SHEET 3 OF 3