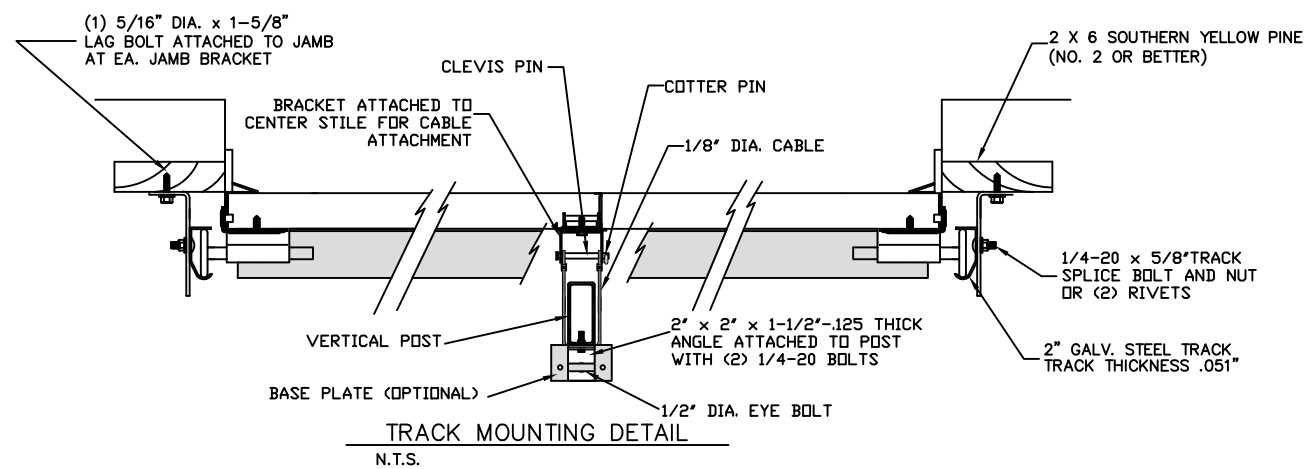


SPECIFICATIONS AND NOTES

1. THE HEADER RECEIVES MAXIMUM DESIGN LOADS OF: +1036 LBS & -1148 LBS AT THE TOP OF THE POST.
2. EACH VERTICAL JAMBS RECEIVES MAXIMUM DESIGN LOADS OF: +148 LBS/FT & -164 LBS/FT
3. DOORS AND HARDWARE WILL BE DESIGNED, MANUFACTURED AND INSTALLED WITH STANDARDS AS SET FORTH BY DASMA.
4. DOOR SECTIONS SHALL BE 25 GA. MIN. (.019") ROLLED FORMED LIGHT COMMERCIAL QUALITY
5. SUPPORTING STRUCTURAL ELEMENTS SHALL BE DESIGNED BY A REGISTERED PROFESSIONAL ENGINEER FOR WIND LOADS INDICATED ON THIS DRAWING IN ADDITION TO OTHER LOADINGS.



THE METHOD OF TESTING WAS IN SUBSTANTIAL CONFORMANCE WITH THE PROCEDURE DESCRIBED IN ASTM E330 AND DASMA 108. THE PRESSURES SHOWN ON THE DRAWINGS WERE CALCULATED USING ASCE 7-98/02/05 WITH THE FOLLOWING PARAMETERS (5 FEET OF DOOR WIDTH IN THE END ZONE, ROOF AT ANY SLOPE, AND I=1.0):

WIND SPEED (MPH)	154	140	133	127	122
EXPOSURE LEVEL	B	C	C	D	D
MEAN ROOF HEIGHT	30'	15'	25'	15'	25'

REV	DESCRIPTION OF REVISIONS	DATE	BY
A	REVISED NOTE 6	12/11/08	CBT
B	REMOVED TABLE 1, NOTE 7. ADDED TITLE TO PG 2.	05/20/09	CBT
C	WIND SPEED TABLE & TRACK CONFIGURATIONS	04/16/12	RLR

MAX SIZE
16' x 7'

DESIGN LOADS
+37.0 PSF
-41.0 PSF

TEST LOADS
+55.5 PSF
-61.5 PSF



Amarr
GARAGE DOORS

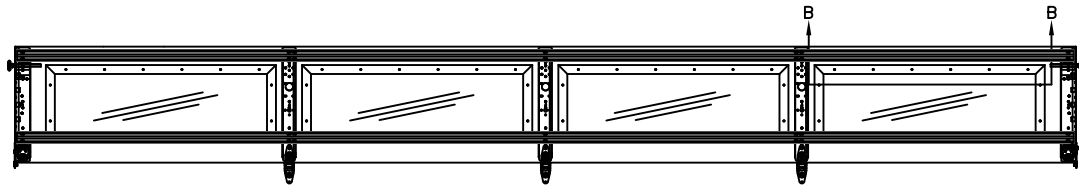
165 CARRIAGE COURT WINSTON-SALEM, N.C. 27105

MODEL #650 OAK SUMMIT w/DuraSafe
MODEL #600 STRATFORD w/DuraSafe
MODEL #950 HERITAGE w/DuraSafe
Short, Long, Flush & Oak Summit Panel's

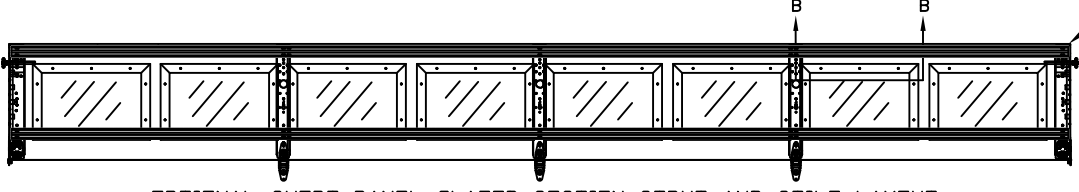
SIZE	DRAWN BY	DLJ	DATE	03/23/06	DRAWING NUMBER
B	CHECKED BY	AAE	DATE	03/23/06	IRC-6716-155-45

ENGINEER: THOMAS L. SHELME RDINE P.E. LIC. No. 0048579 SHEET 1 OF 3

WOOD JAMB ATTACHMENT TO STRUCTURE
SEE NOTE 1



OPTIONAL LONG PANEL GLAZED SECTION STRUT AND STILE LAYOUT
SEE TABLE 1 FOR GLAZING AVAILABILITY



OPTIONAL SHORT PANEL GLAZED SECTION STRUT AND STILE LAYOUT
SEE TABLE 1 FOR GLAZING AVAILABILITY

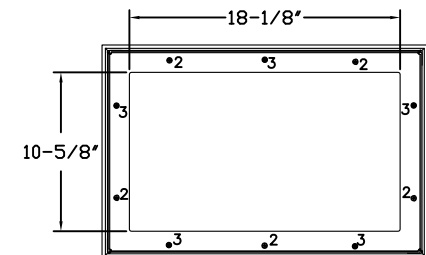
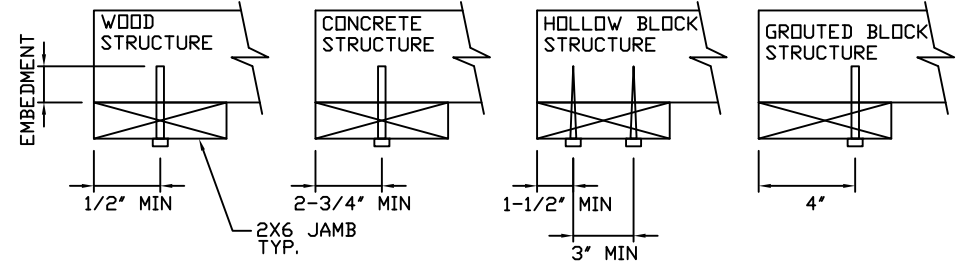
3" 20GA. STRUT LOCATED AT THE TOP AND BOTTOM OF GLAZED SECTION ATTACHED W/(2) 1/4" X 3/4" HEX HEAD SCREWS AT END AND CENTER STILES

2 X 6 VERTICAL JAMB ATTACHMENT TO WOOD FRAME STRUCTURE
5/16" X 3" LAG SCREWS STARTING 6" FROM ENDS THEN 24" O.C. (1 1/2" EMBEDMENT)
2 X 6 VERTICAL JAMB ATTACHMENT TO 2,000 PSI CONCRETE
HILTI KWIK BOLT 3/8" X 4" STARTING 6" FROM ENDS THEN 24" O.C. (2 1/2" EMBEDMENT)
HILTI SLEEVE ANCHOR 3/8" X 2-3/4" STARTING 6" FROM ENDS THEN 24" O.C. (1 1/4" EMBEDMENT)
ITW/RAMSET REDHEAD (TRU-BOLT) 3/8" X 4" STARTING 6" FROM ENDS THEN 24" O.C. (2 1/2" EMBEDMENT)
2 X 6 VERTICAL JAMB ATTACHMENT TO HOLLOW C-90 BLOCK *SEE NOTE 2*
SIMPSON 1/4" X 3" TITEN SCREWS STARTING 6" FROM ENDS, USE PAIRS OF FASTENERS (3" APART) AT 24" O.C. (1 1/2" EMBEDMENT)
HILTI 1/4" X 2-3/4" KWIK-CON II+ SCREWS STARTING 6" FROM ENDS, USE PAIRS OF FASTENERS (3" APART) AT 24" O.C. (1 1/4" EMBEDMENT)

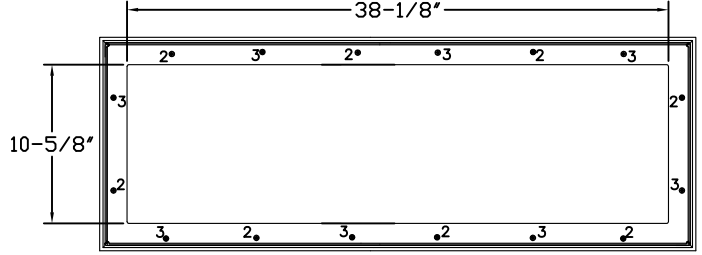
2 X 6 VERTICAL JAMB ATTACHMENT TO GROUTED C-90 BLOCK (2000 PSI GROUT)
HILTI SLEEVE ANCHOR 3/8" X 2-3/4" STARTING 6" FROM ENDS THEN 24" O.C. (1 1/4" EMBEDMENT) (OR, USE FASTENERS FOR HOLLOW C-90 BLOCK)

NOTES

1. REFER TO DETAIL (6) FOR ADDITIONAL FASTENERS AT HEADER
2. OPTION NOT AVAILABLE FOR HEADER ATTACHMENT
3. LAGS AND BOLTS CAN BE COUNTERSUNK TO PROVIDE A FLUSH MOUNTING SURFACE
4. PREPARATION OF WOOD JAMBS BY OTHERS



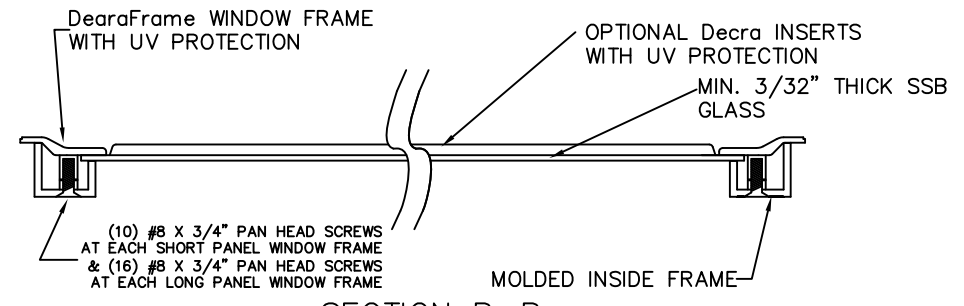
SHORT PANEL GLAZING FASTENER DETAIL
N.T.S.



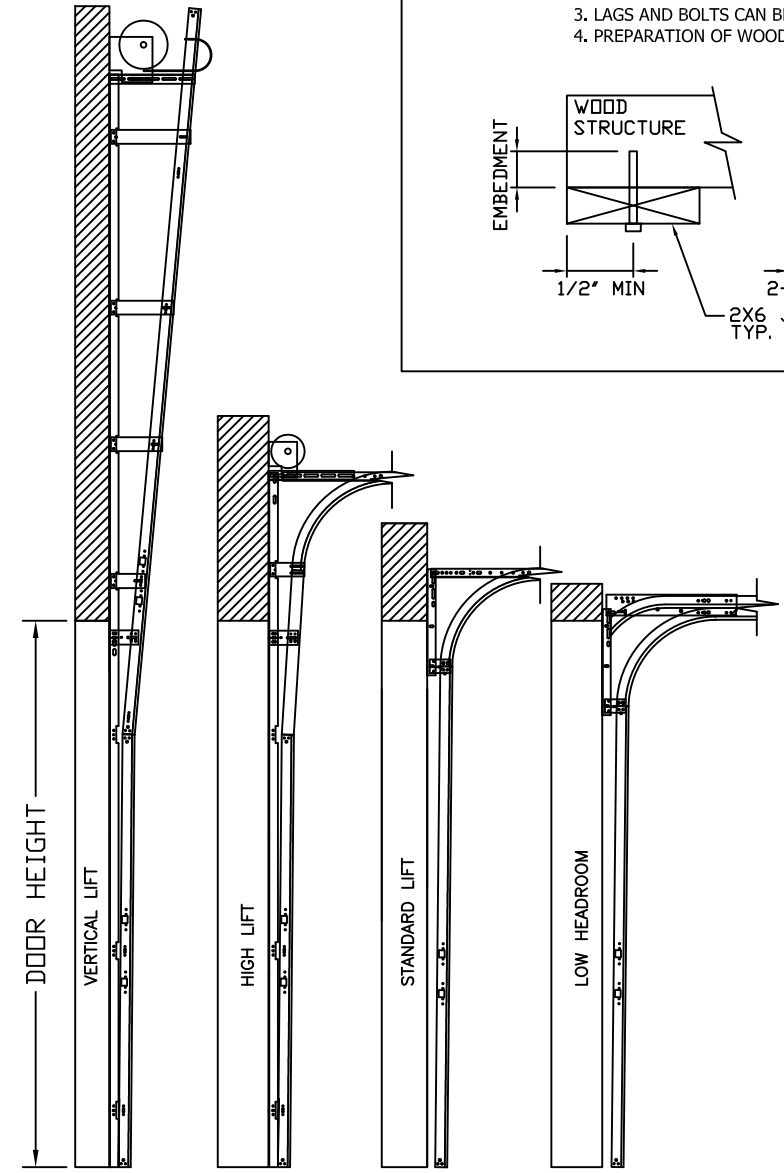
LONG PANEL GLAZING FASTENER DETAIL
N.T.S.

GLAZING OPTION CROSS SECTION

GLAZING NOT AVAILABLE IN WIND-BORNE DEBRIS REGION
GLAZING MEETS ASTM E1300-04



SECTION B-B



AVAILABLE TRACK CONFIGURATIONS
N.T.S.

REV	DESCRIPTION OF REVISIONS	DATE	BY
A	REVISED NOTE 6	12/11/08	CBT
B	REMOVED TABLE 1, NOTE 7. ADDED TITLE TO PG 2.	05/20/09	CBT
C	WIND SPEED TABLE & TRACK CONFIGURATIONS	04/16/12	RLR

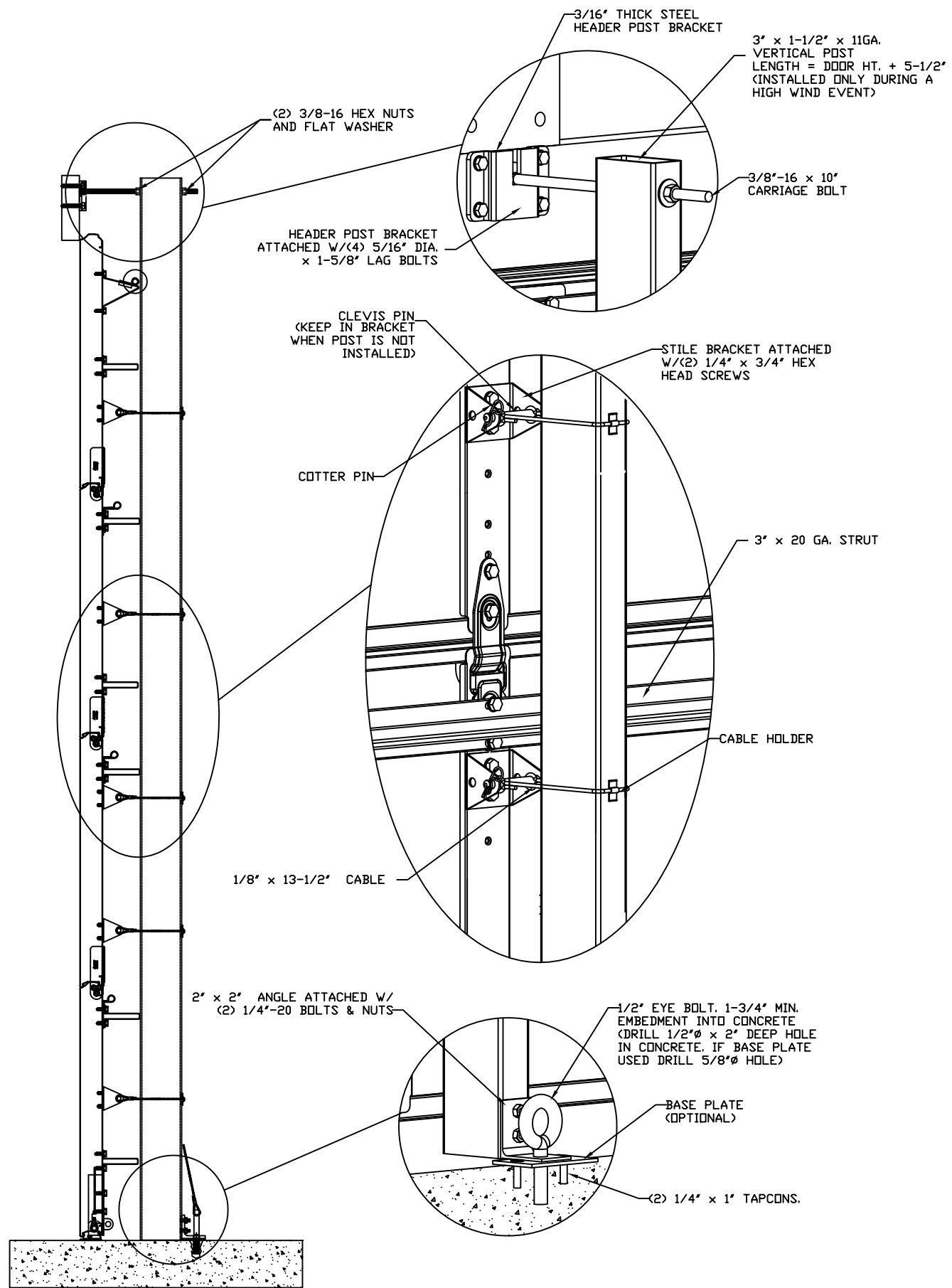
MAX SIZE
16' x 7'
DESIGN LOADS
+37.0 PSF
-41.0 PSF
TEST LOADS
+55.5 PSF
-61.5 PSF



165 CARRIAGE COURT WINSTON-SALEM, N.C. 27105
MODEL #650 OAK SUMMIT w/DuraSafe
MODEL #600 STRATFORD w/DuraSafe
MODEL #950 HERITAGE w/DuraSafe
Short, Long, Flush & Oak Summit Panel's

SIZE	DRAWN BY	DLJ	DATE	03/23/06	DRAWING NUMBER
B	CHECKED BY	AAE	DATE	03/23/06	IRC-6716-155-45

ENGINEER: THOMAS L. SHELMERDINE P.E. LIC. No. 0048579 SHEET 2 OF 3

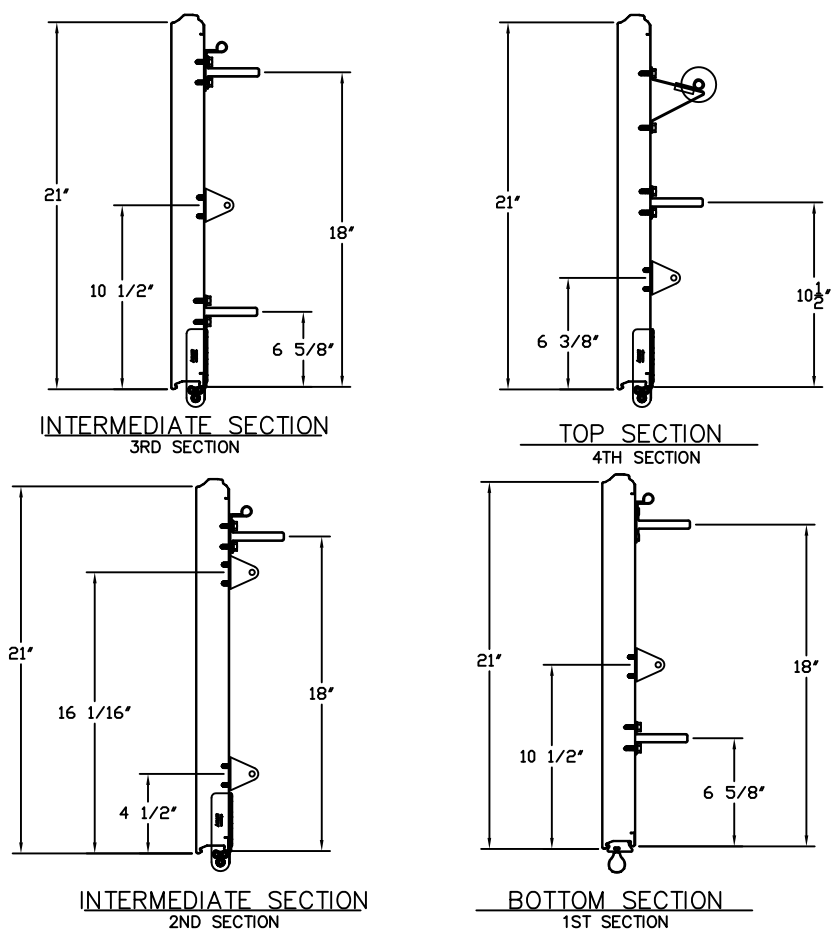


SECTION A-A (FOR 7' TALL DOOR)
N.T.S.

TABLE 1

Section Width (ft)	Panel Type	Center Stile Locations			Max Design Loads Allowed		Glazing Available
		1st (in)	2st (in)	3rd (in)	Positive (PSF)	Negative (PSF)	
10' 0	Short	48.41	*71.59		49.4	54.7	Yes
10' 0	Long	30.00	*60.00	90.00	58.9	65.3	No
10' 0	Oak Summit	30.63	*60.00	89.38	58.9	65.3	No
12' 0	Short	48.81	*72.00	95.19	49.1	54.4	Yes
12' 0	Long	49.63	*72.00	94.38	49.1	54.4	No
12' 0	Oak Summit	48.31	*72.00	95.69	49.1	54.4	No
13' 0	Short	53.00	*78.00	103.00	45.3	50.2	Yes
13' 0	Long	54.10	*78.00	101.90	45.3	50.2	No
13' 0	Oak Summit	52.81	*78.00	103.19	45.3	50.2	No
14' 0	Short	57.76	*84.00	110.11	42.1	46.6	Yes
14' 0	Long	58.63	*84.00	109.38	42.1	46.6	No
14' 0	Oak Summit	57.31	*84.00	110.69	42.1	46.6	No
15' 0	Short	61.94	*90.00	117.94	39.3	43.5	Yes
15' 0	Long	46.60	*90.00	133.40	39.3	43.5	No
15' 0	Oak Summit	61.81	*90.00	118.19	39.3	43.5	No
16' 0	Short	49.62	*96.00	142.38	37	41	Yes
16' 0	Long	50.60	*96.00	141.40	37	41	Yes
16' 0	Oak Summit	48.42	*96.00	143.58	37	41	Yes

*Vertical Post location

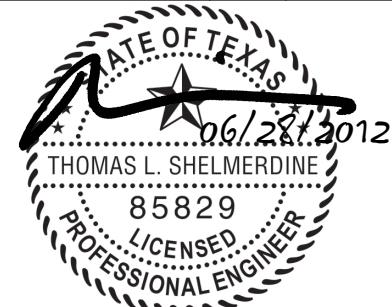


REV	DESCRIPTION OF REVISIONS	DATE	BY
A	REVISED NOTE 6	12/11/08	CBT
B	REMOVED TABLE 1, NOTE 7. ADDED TITLE TO PG 2.	05/20/09	CBT
C	WIND SPEED TABLE & TRACK CONFIGURATIONS	04/16/12	RLR

MAX SIZE
16' x 7'

DESIGN LOADS
+37.0 PSF
-41.0 PSF

TEST LOADS
+55.5 PSF
-61.5 PSF



165 CARRIAGE COURT WINSTON-SALEM, N.C. 27105

MODEL #650 OAK SUMMIT w/DuraSafe
MODEL #600 STRATFORD w/DuraSafe
MODEL #950 HERITAGE w/DuraSafe
Short, Long, Flush & Oak Summit Panel's

SIZE	DRAWN BY	DLJ	DATE	03/23/06	DRAWING NUMBER
B	CHECKED BY	AAE	DATE	03/23/06	IRC-6716-155-45

ENGINEER: THOMAS L. SHLMEARDINE P.E. LIC. No. 0048579 SHEET 3 OF 3